



## DRILL STEM TEST REPORT

Prepared For: **American Warrior Inc.**

PO Box 399  
Garden City KS 67846

ATTN: Luke Thompson

### **Whipple E #1-9**

#### **9-18s-26w Ness,KS**

Start Date: 2014.11.11 @ 20:44:42

End Date: 2014.11.12 @ 03:51:36

Job Ticket #: 58602                      DST #: 1

Trilobite Testing, Inc  
1515 Commerce Parkway Hays, KS 67601  
ph: 785-625-4778 fax: 785-625-5620

Printed: 2014.11.14 @ 16:04:04



**TRILOBITE  
TESTING, INC**

# DRILL STEM TEST REPORT

American Warrior Inc.

**9-18s-26w Ness, KS**

PO Box 399  
Garden City KS 67846

**Whipple E #1-9**

Job Ticket: 58602

**DST#: 1**

ATTN: Luke Thompson

Test Start: 2014.11.11 @ 20:44:42

## GENERAL INFORMATION:

Formation: **Marmaton**

Deviated: No Whipstock: ft (KB)

Time Tool Opened: 00:15:07

Time Test Ended: 03:51:36

Test Type: Conventional Bottom Hole (Initial)

Tester: James Geier

Unit No: 71

**Interval: 4324.00 ft (KB) To 4434.00 ft (KB) (TVD)**

Reference Elevations: 2643.00 ft (KB)

Total Depth: 4434.00 ft (KB) (TVD)

2631.00 ft (CF)

Hole Diameter: 7.88 inches Hole Condition: Poor

KB to GR/CF: 12.00 ft

**Serial #: 8355**

**Inside**

Press@RunDepth: 38.95 psig @ 4332.00 ft (KB)

Capacity: 8000.00 psig

Start Date: 2014.11.11

End Date:

2014.11.12

Last Calib.:

2014.11.12

Start Time: 20:44:42

End Time:

03:51:36

Time On Btm:

2014.11.12 @ 00:14:22

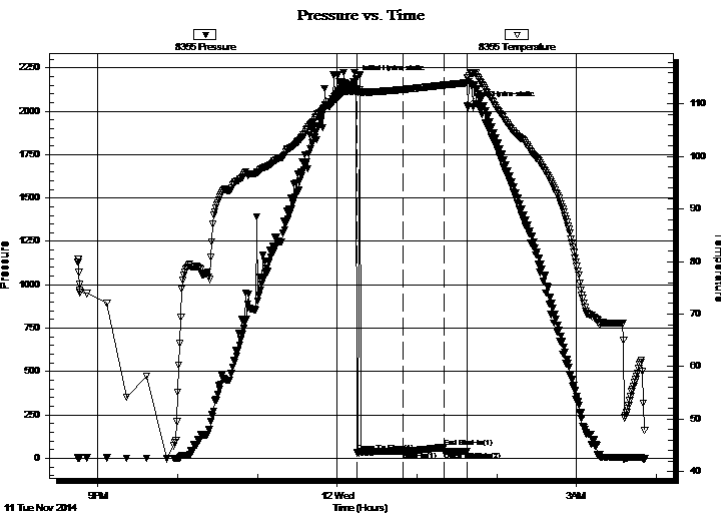
Time Off Btm:

2014.11.12 @ 01:37:37

TEST COMMENT: IF: 30 1/4 " Blow / Died @ 20 min.

IS: 30 No return

FF: 10 No blow



## PRESSURE SUMMARY

Time (Min.)	Pressure (psig)	Temp (deg F)	Annotation
0	2185.46	112.88	Initial Hydro-static
1	32.04	112.38	Open To Flow (1)
36	38.95	112.77	Shut-In(1)
66	62.74	113.60	End Shut-In(1)
66	41.12	113.61	Open To Flow (2)
83	41.53	114.05	Shut-In(2)
84	2032.42	114.97	Final Hydro-static

## Recovery

Length (ft)	Description	Volume (bbl)
2.00	mud 100%	0.03

## Gas Rates

	Choke (inches)	Pressure (psig)	Gas Rate (Mcf/d)



**TRILOBITE TESTING, INC**

## DRILL STEM TEST REPORT

American Warrior Inc.

**9-18s-26w Ness, KS**

PO Box 399  
Garden City KS 67846

**Whipple E #1-9**

Job Ticket: 58602

**DST#: 1**

ATTN: Luke Thompson

Test Start: 2014.11.11 @ 20:44:42

### GENERAL INFORMATION:

Formation: **Marmaton**

Deviated: No Whipstock: ft (KB)

Time Tool Opened: 00:15:07

Time Test Ended: 03:51:36

Test Type: Conventional Bottom Hole (Initial)

Tester: James Geier

Unit No: 71

**Interval: 4324.00 ft (KB) To 4434.00 ft (KB) (TVD)**

Reference Elevations: 2643.00 ft (KB)

Total Depth: 4434.00 ft (KB) (TVD)

2631.00 ft (CF)

Hole Diameter: 7.88 inches Hole Condition: Poor

KB to GR/CF: 12.00 ft

**Serial #: 8674 Outside**

Press@RunDepth: psig @ 4332.00 ft (KB)

Capacity: 8000.00 psig

Start Date: 2014.11.11

End Date:

2014.11.12

Last Calib.:

2014.11.12

Start Time: 20:44:23

End Time:

03:50:02

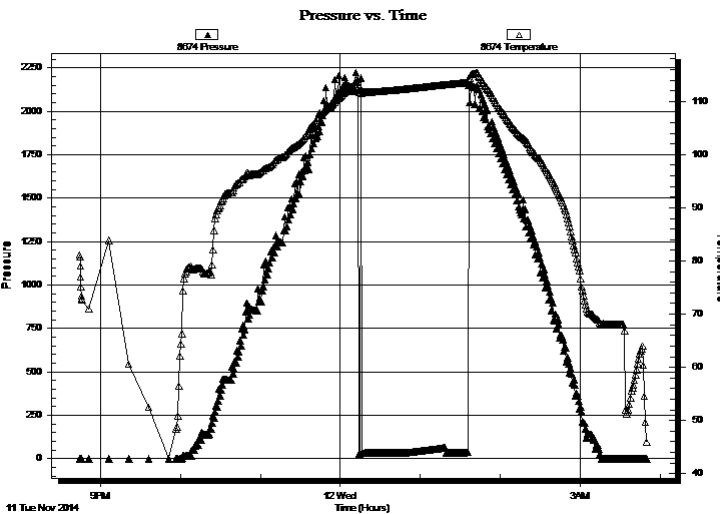
Time On Btm:

Time Off Btm:

TEST COMMENT: IF: 30 1/4 " Blow / Died @ 20 min.

IS: 30 No return

FF: 10 No blow



### PRESSURE SUMMARY

Time (Min.)	Pressure (psig)	Temp (deg F)	Annotation

### Recovery

Length (ft)	Description	Volume (bbl)
2.00	mud 100%	0.03

### Gas Rates

	Choke (inches)	Pressure (psig)	Gas Rate (Mcf/d)



**TRILOBITE  
TESTING, INC**

# DRILL STEM TEST REPORT

**TOOL DIAGRAM**

American Warrior Inc.

**9-18s-26w Ness,KS**

PO Box 399  
Garden City KS 67846

**Whipple E #1-9**

Job Ticket: 58602

**DST#: 1**

ATTN: Luke Thompson

Test Start: 2014.11.11 @ 20:44:42

## Tool Information

Drill Pipe:	Length: 4077.00 ft	Diameter: 2.25 inches	Volume: 20.05 bbl	Tool Weight:	2500.00 lb
Heavy Wt. Pipe:	Length: 0.00 ft	Diameter: inches	Volume: 0.00 bbl	Weight set on Packer:	25000.00 lb
Drill Collar:	Length: 248.50 ft	Diameter: 3.80 inches	Volume: 3.49 bbl	Weight to Pull Loose:	90000.00 lb
			<u>Total Volume: 23.54 bbl</u>	Tool Chased	0.00 ft
Drill Pipe Above KB:	29.50 ft			String Weight: Initial	69000.00 lb
Depth to Top Packer:	4324.00 ft			Final	69000.00 lb
Depth to Bottom Packer:	ft				
Interval between Packers:	110.00 ft				
Tool Length:	138.00 ft				
Number of Packers:	2	Diameter: 6.75 inches			
Tool Comments:					

## Tool Description

Tool Description	Length (ft)	Serial No.	Position	Depth (ft)	Accum. Lengths
Change Over Sub	1.00		Fluid	4297.00	
Shut In Tool	5.00			4302.00	
Hydraulic tool	5.00			4307.00	
Jars	5.00			4312.00	
Safety Joint	3.00			4315.00	
Packer	5.00			4320.00	28.00 Bottom Of Top Packer
Packer	4.00			4324.00	
Stubb	1.00			4325.00	
Perforations	7.00			4332.00	
Recorder	0.00	8355	Inside	4332.00	
Recorder	0.00	8674	Outside	4332.00	
Change Over Sub	1.00			4333.00	
Drill Pipe	94.50			4427.50	
Change Over Sub	1.50			4429.00	
Bullnose	5.00			4434.00	110.00 Bottom Packers & Anchor

**Total Tool Length: 138.00**



**TRILOBITE  
TESTING, INC**

# DRILL STEM TEST REPORT

**FLUID SUMMARY**

American Warrior Inc.

**9-18s-26w Ness,KS**

PO Box 399  
Garden City KS 67846

**Whipple E #1-9**

Job Ticket: 58602

**DST#: 1**

ATTN: Luke Thompson

Test Start: 2014.11.11 @ 20:44:42

## Mud and Cushion Information

Mud Type: Gel Chem

Cushion Type:

Oil API:

0 deg API

Mud Weight: 9.00 lb/gal

Cushion Length:

ft

Water Salinity:

0 ppm

Viscosity: 49.00 sec/qt

Cushion Volume:

bbbl

Water Loss: 7.17 in<sup>3</sup>

Gas Cushion Type:

Resistivity: ohm.m

Gas Cushion Pressure:

psig

Salinity: 3200.00 ppm

Filter Cake: 1.00 inches

## Recovery Information

Recovery Table

Length ft	Description	Volume bbl
2.00	mud 100%	0.028

Total Length: 2.00 ft      Total Volume: 0.028 bbl

Num Fluid Samples: 0

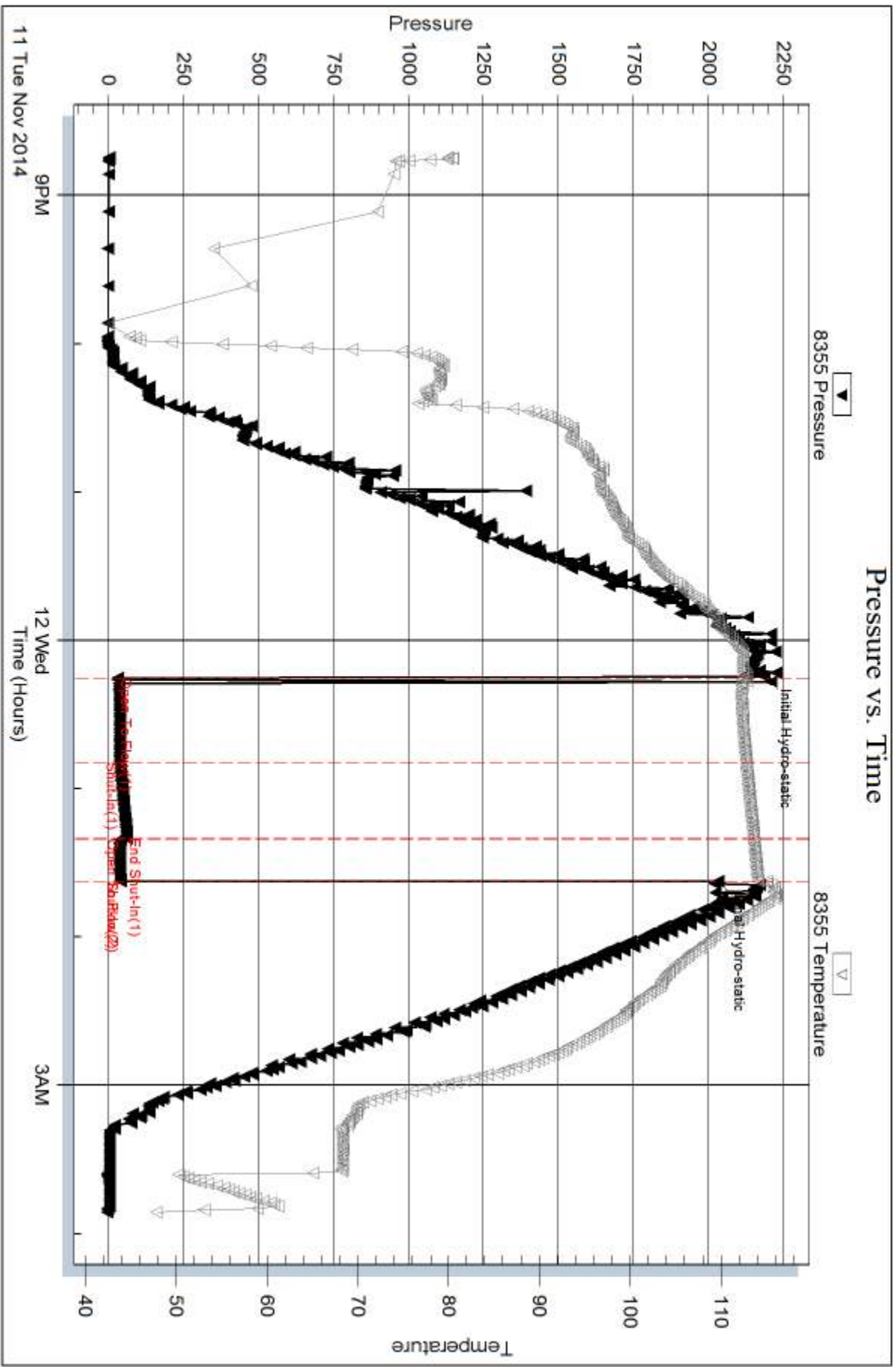
Num Gas Bombs: 0

Serial #:

Laboratory Name:

Laboratory Location:

Recovery Comments:

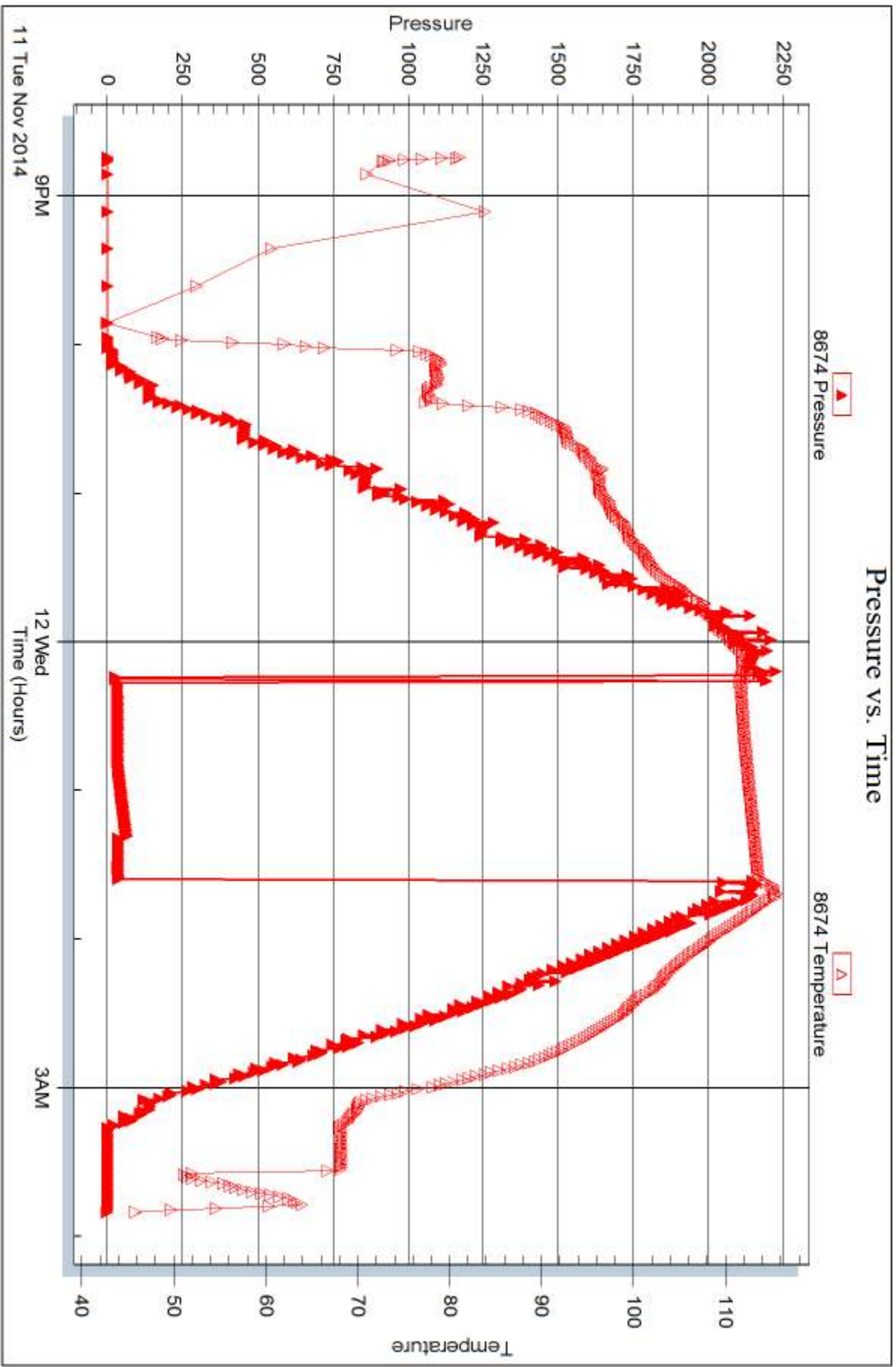


Serial #: 8674

Outside American Warrior Inc.

Whipple E#1-9

DST Test Number: 1



Trilobite Testing, Inc

Ref. No: 59602

Printed: 2014.11.14 @ 16:04:06



## DRILL STEM TEST REPORT

Prepared For: **American Warrior Inc.**

PO Box 399  
Garden City KS 67846

ATTN: Luke Thompson

### **Whipple E #1-9**

#### **9-18s-26w Ness,KS**

Start Date: 2014.11.13 @ 07:30:00

End Date: 2014.11.13 @ 17:50:40

Job Ticket #: 58708                      DST #: 2

Trilobite Testing, Inc  
1515 Commerce Parkway Hays, KS 67601  
ph: 785-625-4778 fax: 785-625-5620

Printed: 2014.11.14 @ 16:02:55

American Warrior Inc. 9-18s-26w Ness,KS Whipple E #1-9 DST # 2 Mississippi 2014.11.13





**TRILOBITE  
TESTING, INC**

# DRILL STEM TEST REPORT

American Warrior Inc.

**9-18s-26w Ness,KS**

PO Box 399  
Garden City KS 67846

**Whipple E #1-9**

Job Ticket: 58708

**DST#: 2**

ATTN: Luke Thompson

Test Start: 2014.11.13 @ 07:30:00

## GENERAL INFORMATION:

Formation: **Mississippi**

Deviated: No Whipstock: ft (KB)

Time Tool Opened: 11:11:10

Time Test Ended: 17:50:40

Test Type: Conventional Bottom Hole (Reset)

Tester: Will MacLean

Unit No: 71

**Interval: 4549.00 ft (KB) To 4611.00 ft (KB) (TVD)**

Reference Elevations: 2643.00 ft (KB)

Total Depth: 4611.00 ft (KB) (TVD)

2631.00 ft (CF)

Hole Diameter: 7.88 inches Hole Condition: Good

KB to GR/CF: 12.00 ft

**Serial #: 8674 Outside**

Press@RunDepth: 251.14 psig @ 4573.00 ft (KB)

Capacity: 8000.00 psig

Start Date: 2014.11.13

End Date:

2014.11.13

Last Calib.:

2014.11.13

Start Time:

07:30:00

End Time:

17:50:40

Time On Btm:

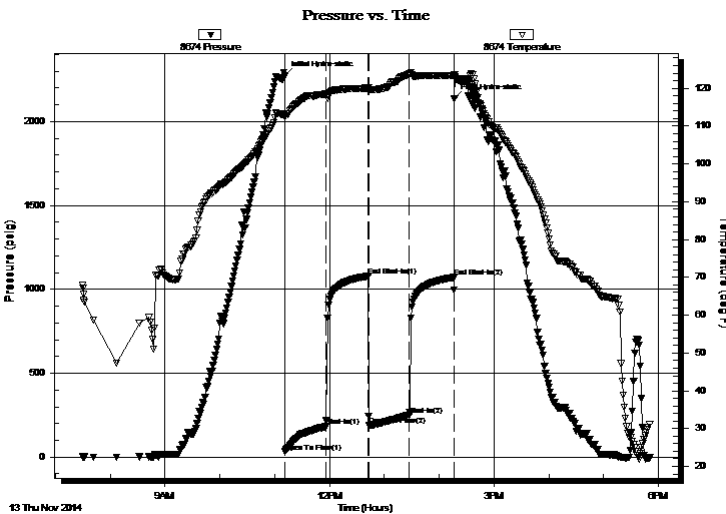
2014.11.13 @ 11:10:55

Time Off Btm:

2014.11.13 @ 14:16:39

**TEST COMMENT:** IF- Weak Surface Blow Built to BOB in 28 min  
IS- Weak Surface Blow in 20 min  
FF- Weak Surface Blow Built to BOB in 19 min  
FS- Weak Surface Blow in 4 1/4 min Built to 1"

## PRESSURE SUMMARY



Time (Min.)	Pressure (psig)	Temp (deg F)	Annotation
0	2272.41	113.29	Initial Hydro-static
1	30.33	112.38	Open To Flow (1)
46	181.15	118.45	Shut-In(1)
92	1078.89	120.08	End Shut-In(1)
92	189.30	119.71	Open To Flow (2)
137	251.14	123.77	Shut-In(2)
186	1071.45	123.31	End Shut-In(2)
186	2135.32	123.68	Final Hydro-static

## Recovery

Length (ft)	Description	Volume (bbl)
124.00	WGOCM 2%w 20%g 20%oil 58%m	1.74
124.00	WGMCO 3%w 9%g 43%m 45%oil	1.74
252.00	WGMCO 3%w 18%g 30%m 49%oil	1.25
63.00	MGCO 10%m 14%g 76%oil	0.31
48.00	MCGO 3%m 8%g 89%oil	0.24
0.00	204' of GIP	0.00

\* Recovery from multiple tests

## Gas Rates

Choke (inches)	Pressure (psig)	Gas Rate (Mcf/d)



**TRILOBITE TESTING, INC.**

# DRILL STEM TEST REPORT

American Warrior Inc.

**9-18s-26w Ness,KS**

PO Box 399  
Garden City KS 67846

**Whipple E #1-9**

Job Ticket: 58708

**DST#: 2**

ATTN: Luke Thompson

Test Start: 2014.11.13 @ 07:30:00

## GENERAL INFORMATION:

Formation: **Mississippi**

Deviated: No Whipstock: ft (KB)

Time Tool Opened: 11:11:10

Time Test Ended: 17:50:40

Test Type: Conventional Bottom Hole (Reset)

Tester: Will MacLean

Unit No: 71

**Interval: 4549.00 ft (KB) To 4611.00 ft (KB) (TVD)**

Reference Elevations: 2643.00 ft (KB)

Total Depth: 4611.00 ft (KB) (TVD)

2631.00 ft (CF)

Hole Diameter: 7.88 inches Hole Condition: Good

KB to GR/CF: 12.00 ft

**Serial #: 8355 Outside**

Press@RunDepth: psig @ 4573.00 ft (KB)

Capacity: 8000.00 psig

Start Date: 2014.11.13

End Date: 2014.11.13

Last Calib.: 1899.12.30

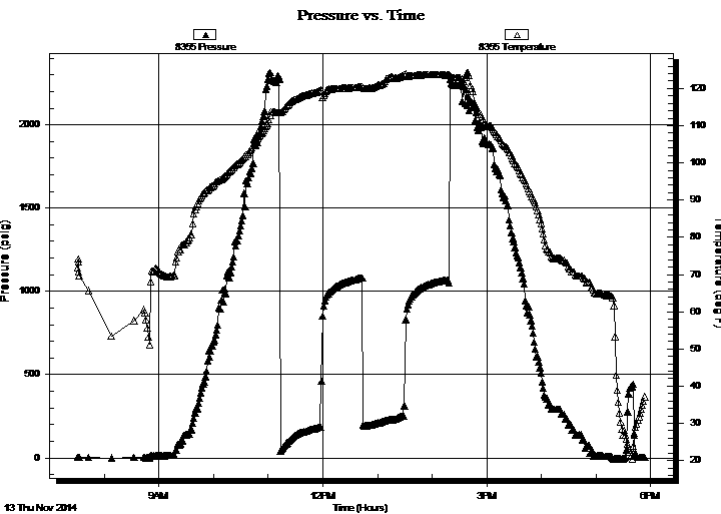
Start Time: 07:30:42

End Time: 17:53:22

Time On Btm:

Time Off Btm:

**TEST COMMENT:** IF- Weak Surface Blow Built to BOB in 28 min  
IS- Weak Surface Blow in 20 min  
FF- Weak Surface Blow Built to BOB in 19 min  
FS- Weak Surface Blow in 4 1/4 min Built to 1"



## PRESSURE SUMMARY

Time (Min.)	Pressure (psig)	Temp (deg F)	Annotation

## Recovery

Length (ft)	Description	Volume (bbl)
124.00	WGOCM 2%w 20%g 20%oil 58%m	1.74
124.00	WGMCO 3%w 9%g 43%m 45%oil	1.74
252.00	WGMCO 3%w 18%g 30%m 49%oil	1.25
63.00	MGCO 10%m 14%g 76%oil	0.31
48.00	MCGO 3%m 8%g 89%oil	0.24
0.00	204' of GIP	0.00

\* Recovery from multiple tests

## Gas Rates

Choke (inches)	Pressure (psig)	Gas Rate (Mcf/d)



**TRILOBITE  
TESTING, INC**

# DRILL STEM TEST REPORT

**TOOL DIAGRAM**

American Warrior Inc.

**9-18s-26w Ness,KS**

PO Box 399  
Garden City KS 67846

**Whipple E #1-9**

Job Ticket: 58708

**DST#: 2**

ATTN: Luke Thompson

Test Start: 2014.11.13 @ 07:30:00

## Tool Information

Drill Pipe:	Length: 4302.00 ft	Diameter: 2.25 inches	Volume: 21.16 bbl	Tool Weight: 2500.00 lb
Heavy Wt. Pipe:	Length: 0.00 ft	Diameter: inches	Volume: 0.00 bbl	Weight set on Packer: 25000.00 lb
Drill Collar:	Length: 249.00 ft	Diameter: 3.80 inches	Volume: 3.49 bbl	Weight to Pull Loose: 90000.00 lb
			<u>Total Volume: 24.65 bbl</u>	Tool Chased 0.00 ft
Drill Pipe Above KB:	30.00 ft			String Weight: Initial 70000.00 lb
Depth to Top Packer:	4549.00 ft			Final 72000.00 lb
Depth to Bottom Packer:	ft			
Interval between Packers:	62.00 ft			
Tool Length:	90.00 ft			
Number of Packers:	2	Diameter: 6.75 inches		

Tool Comments:

## Tool Description

Tool Description	Length (ft)	Serial No.	Position	Depth (ft)	Accum. Lengths
Change Over Sub	1.00			4522.00	
Shut In Tool	5.00			4527.00	
Hydraulic tool	5.00			4532.00	
Jars	5.00			4537.00	
Safety Joint	3.00			4540.00	
Packer	5.00			4545.00	28.00 Bottom Of Top Packer
Packer	4.00			4549.00	
Stubb	1.00			4550.00	
Perforations	23.00			4573.00	
Recorder	0.00	8674	Outside	4573.00	
Recorder	0.00	8355	Outside	4573.00	
Change Over Sub	1.00			4574.00	
Drill Pipe	31.00			4605.00	
Change Over Sub	1.00			4606.00	
Bullnose	5.00			4611.00	62.00 Bottom Packers & Anchor

**Total Tool Length: 90.00**



**TRILOBITE  
TESTING, INC**

# DRILL STEM TEST REPORT

## FLUID SUMMARY

American Warrior Inc.

**9-18s-26w Ness,KS**

PO Box 399  
Garden City KS 67846

**Whipple E #1-9**

Job Ticket: 58708

**DST#: 2**

ATTN: Luke Thompson

Test Start: 2014.11.13 @ 07:30:00

### Mud and Cushion Information

Mud Type: Gel Chem  
Mud Weight: 9.00 lb/gal  
Viscosity: 48.00 sec/qt  
Water Loss: 7.95 in<sup>3</sup>  
Resistivity: ohm.m  
Salinity: 4100.00 ppm  
Filter Cake: 1.00 inches

Cushion Type:  
Cushion Length: ft  
Cushion Volume: bbl  
Gas Cushion Type:  
Gas Cushion Pressure: psig

Oil API: 38 deg API  
Water Salinity: ppm

### Recovery Information

Recovery Table

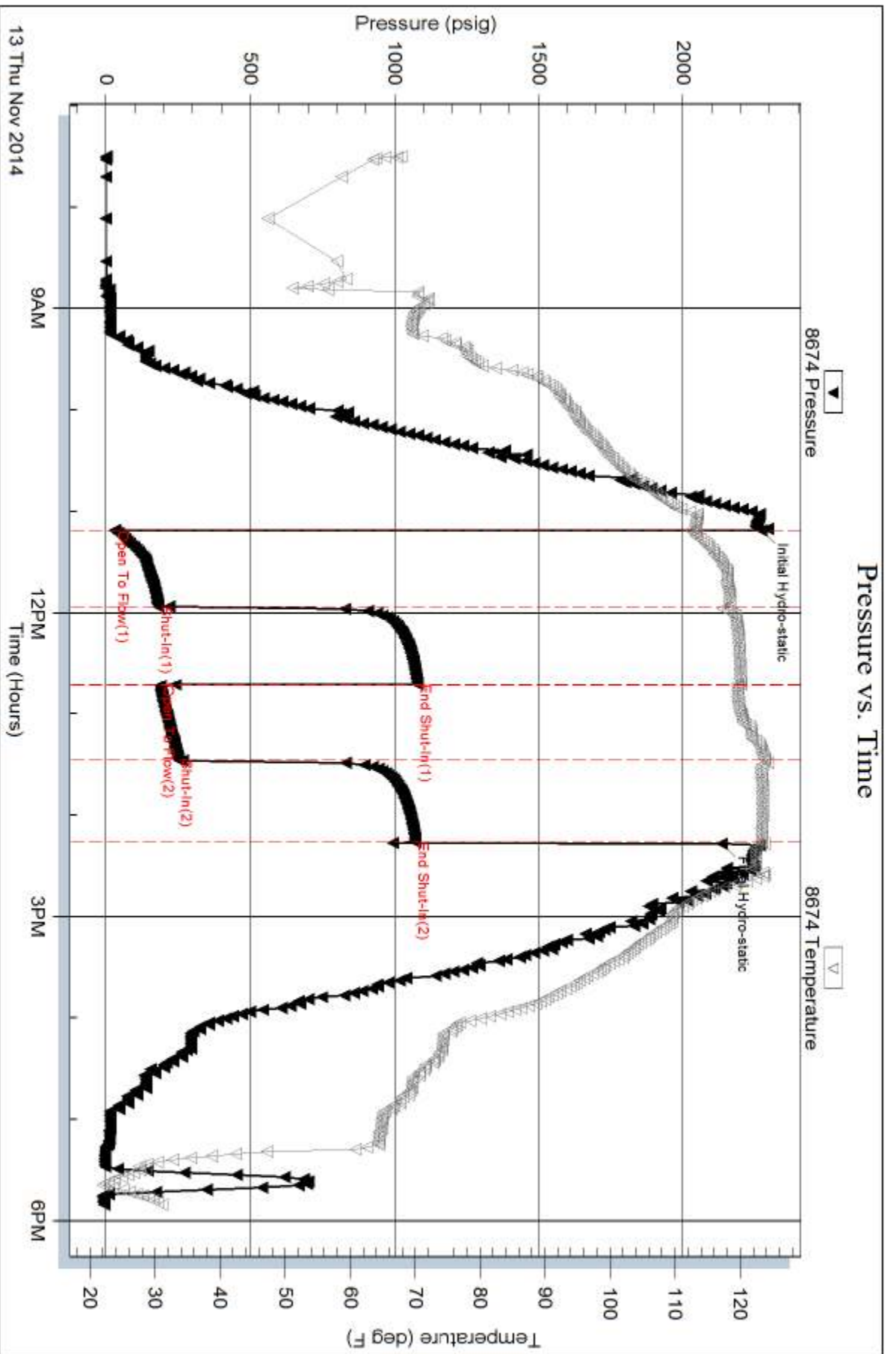
Length ft	Description	Volume bbl
124.00	WGOCM 2%w 20%g 20%oil 58%m	1.739
124.00	WGMCO 3%w 9%g 43%m 45%oil	1.739
252.00	WGMCO 3%w 18%g 30%m 49%oil	1.248
63.00	MGCO 10%m 14%g 76%oil	0.310
48.00	MCGO 3%m 8%g 89%oil	0.236
0.00	204' of GIP	0.000

Total Length: 611.00 ft      Total Volume: 5.272 bbl

Num Fluid Samples: 0      Num Gas Bombs: 0      Serial #:

Laboratory Name:      Laboratory Location:

Recovery Comments: API is 36 @ 40f = 38

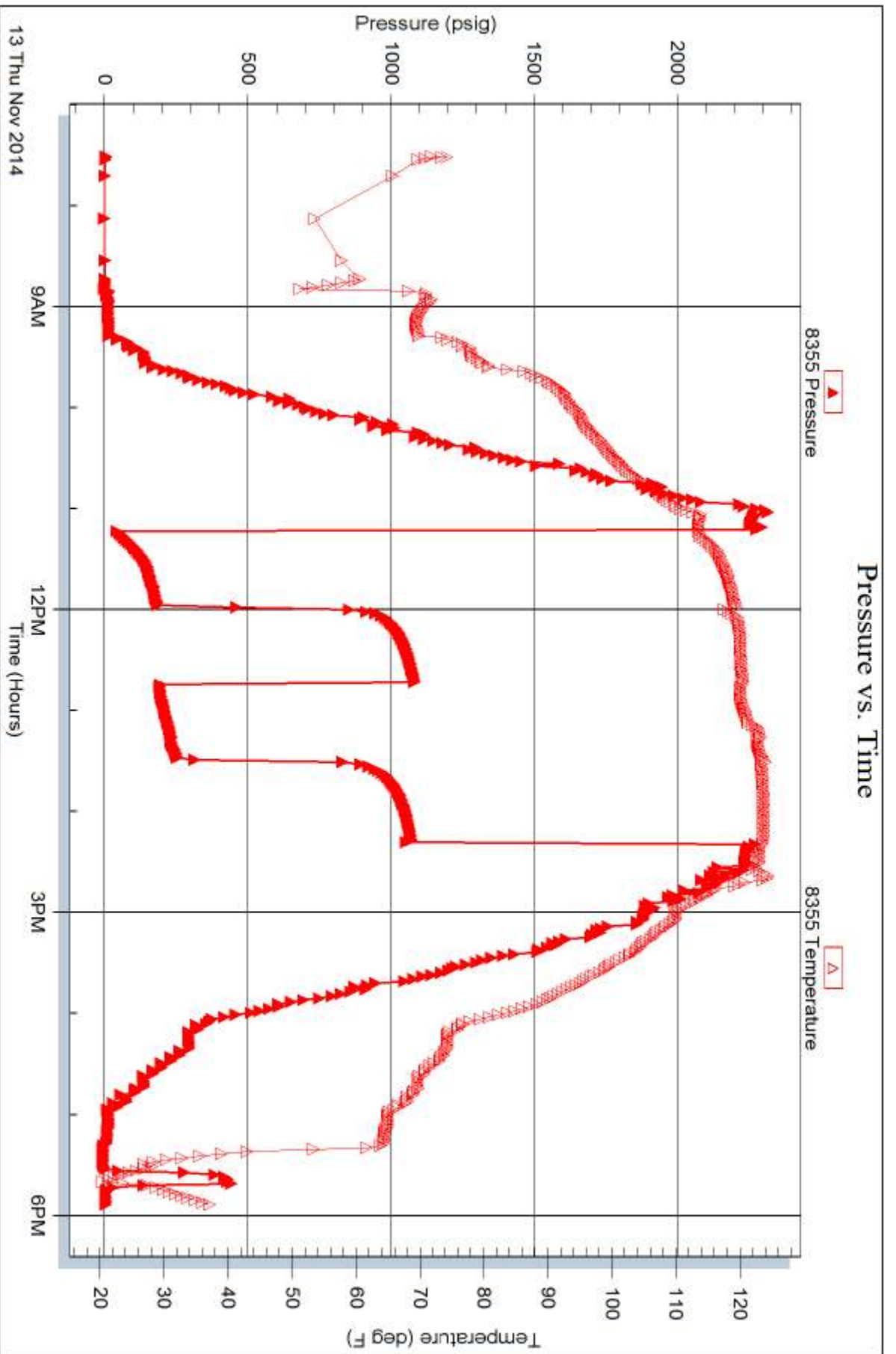


Serial #: 8355

Outside American Warrior Inc.

Whipple E#1-9

DST Test Number: 2



Trilobite Testing, Inc

Ref. No: 58708

Printed: 2014.11.14 @ 16:02:56



# TRILOBITE TESTING INC.

1515 Commerce Parkway • Hays, Kansas 67601

## Test Ticket

NO. 58602

Well Name & No. Whipple I #1-9 Test No. 1 Date 11/11/14  
 Company American WARDION FNC Elevation 2043 KB 2031 GL  
 Address 318 Cummings Rd. PO Box 399 Garden City, KS 67846  
 Co. Rep / Geo. Luke Thompson Rig \_\_\_\_\_  
 Location: Sec. 9 Twp. 18S Rge. 26W Co. Nass State Ks

Interval Tested 4324-4434 Zone Tested Wardion  
 Anchor Length 110 Drill Pipe Run 4077 Mud Wt. 9.4  
 Top Packer Depth 4319 Drill Collars Run 248.5 Vis 49  
 Bottom Packer Depth 4324 Wt. Pipe Run 0 WL 7.2  
 Total Depth 4434 Chlorides 3200 ppm System LCM 2  
 Blow Description 1P: 1/4" blow / Died @ 20min  
1SI: No return  
FF: No blow

Rec	Feet of	%gas	%oil	%water	%mud
<u>2</u>	<u>MUP</u>			<u>100</u>	
Rec	Feet of	%gas	%oil	%water	%mud
Rec	Feet of	%gas	%oil	%water	%mud
Rec	Feet of	%gas	%oil	%water	%mud

Rec Total 2 BHT 115 Gravity \_\_\_\_\_ API RW \_\_\_\_\_ @ \_\_\_\_\_ °F Chlorides \_\_\_\_\_ ppm

(A) Initial Hydrostatic <u>2185</u>	<input checked="" type="checkbox"/> Test <u>1250</u>	T-On Location <u>1800</u>
(B) First Initial Flow <u>32</u>	<input checked="" type="checkbox"/> Jars <u>250</u>	T-Started <u>2044</u>
(C) First Final Flow <u>38</u>	<input checked="" type="checkbox"/> Safety Joint <u>75</u>	T-Open <u>0:17</u>
(D) Initial Shut-In <u>62</u>	<input checked="" type="checkbox"/> Circ Sub <u>N/A</u>	T-Pulled <u>01:24</u>
(E) Second Initial Flow <u>41</u>	<input type="checkbox"/> Hourly Standby	T-Out <u>0330</u>
(F) Second Final Flow <u>N/A</u>	<input checked="" type="checkbox"/> Mileage <u>800 1/2</u> <u>136.40</u>	Comments _____
(G) Final Shut-In <u>N/A</u>	<input type="checkbox"/> Sampler	_____
(H) Final Hydrostatic <u>2032</u>	<input type="checkbox"/> Straddle	<input type="checkbox"/> Ruined Shale Packer
Initial Open <u>30</u>	<input type="checkbox"/> Shale Packer	<input type="checkbox"/> Ruined Packer
Initial Shut-In <u>30</u>	<input type="checkbox"/> Extra Packer	<input type="checkbox"/> Extra Copies
Final Flow <u>10</u>	<input type="checkbox"/> Extra Recorder	Sub Total <u>0</u>
Final Shut-In _____	<input type="checkbox"/> Day Standby	Total <u>1711.40</u>
	<input type="checkbox"/> Accessibility	MP/DST Disc't _____
	Sub Total <u>1711.40</u>	

Approved By \_\_\_\_\_ Our Representative [Signature]  
 Trilobite Testing Inc. shall not be liable for damaged of any kind of the property or personnel of the one for whom a test is made, or for any loss suffered or sustained, directly or indirectly, through the use of its equipment, or its statements or opinion concerning the results of any test, tools lost or damaged in the hole shall be paid for at cost by the party for whom the test is made.



# TRILOBITE TESTING INC.

1515 Commerce Parkway • Hays, Kansas 67601

## Test Ticket

NO. 58708

4/10

Well Name & No. Whipple E #1-9 Test No. DST #2 Date 11-13-14  
 Company American Warrior Inc. Elevation 2643 KB 2631 GL  
 Address P.O. Box 399 Cozuden City KS 67846  
 Co. Rep / Geo. Luke Thompson Rig Duke #5  
 Location: Sec. 9 Twp. 18s Rge. 26w Co. Ness State KS

Interval Tested 4549-4611 Zone Tested Mississippi  
 Anchor Length 62 Drill Pipe Run 4302 Mud Wt. 9.4  
 Top Packer Depth 4545 Drill Collars Run 249 Vis 57  
 Bottom Packer Depth 4549 Wt. Pipe Run 0 WL 7.2  
 Total Depth 4611 Chlorides 3300 ppm System LCM 115

Blow Description IF Weak Surface Blow Built to BOB in 28 min  
ISF - Weak Surface Blow in 20 min  
FF - Weak Surface Blow Built to BOB in 19 min  
FST - Weak Surface Blow in 4 min Built to 1"

Rec	Feet of	Material	%gas	%oil	%water	%mud
<del>48</del>	Feet of	<del>W-C-MCO</del> MCO-CO	8	89	2	3
63	Feet of	MCO-CO	14	76		10
252	Feet of	W-C-MCO	18	49	3	30
124	Feet of	W-C-MCO	9	45	3	43
124	Feet of	W-C-MCM	20	20	2	58
Rec Total	611	BHT 122	Gravity	API RW	@	°F Chlorides

(A) Initial Hydrostatic 2272  Test 1250 T-On Location \_\_\_\_\_  
 (B) First Initial Flow 30  Jars 250 T-Started 7:30  
 (C) First Final Flow 181  Safety Joint 75 T-Open 11:11  
 (D) Initial Shut-In 1078  Circ Sub NIC T-Pulled 14:16  
 (E) Second Initial Flow 189  Hourly Standby \_\_\_\_\_ T-Out 17:50  
 (F) Second Final Flow 251  Mileage 88 R/T 136.40 Comments \_\_\_\_\_  
 (G) Final Shut-In 1071  Sampler \_\_\_\_\_ 204' OJP  
 (H) Final Hydrostatic 2135  Straddle \_\_\_\_\_  Ruined Shale Packer \_\_\_\_\_  
 Shale Packer \_\_\_\_\_  Ruined Packer \_\_\_\_\_  
 Extra Packer \_\_\_\_\_  Extra Copies \_\_\_\_\_  
 Extra Recorder \_\_\_\_\_ Sub Total 0  
 Day Standby \_\_\_\_\_ Total 1711.40  
 Accessibility \_\_\_\_\_ MP/DST Disc't \_\_\_\_\_  
 Sub Total 1711.40

Approved By \_\_\_\_\_ Our Representative [Signature]

Trilobite Testing Inc. shall not be liable for damaged of any kind of the property or personnel of the one for whom a test is made, or for any loss suffered or sustained, directly or indirectly, through the use of its equipment, or its statements or opinion concerning the results of any test, tools lost or damaged in the hole shall be paid for at cost by the party for whom the test is made.