



DRILL STEM TEST REPORT

Prepared For: **Murfin Drilling Co., Inc.**

250 N. Water, Ste 300
Wichita KS 67202

ATTN: Robert Hendrix

Frisbie 'A' #1-6

6-2s-36w Rawlins,KS

Start Date: 2014.09.12 @ 08:44:00

End Date: 2014.09.12 @ 17:38:30

Job Ticket #: 60117 DST #: 1

Trilobite Testing, Inc
1515 Commerce Parkway Hays, KS 67601
ph: 785-625-4778 fax: 785-625-5620

Printed: 2014.09.18 @ 14:16:59



**TRILOBITE
TESTING, INC**

DRILL STEM TEST REPORT

Murfin Drilling Co., Inc.

6-2s-36w Rawlins,KS

250 N. Water, Ste 300
Wichita KS 67202

Frisbie 'A' #1-6

Job Ticket: 60117

DST#: 1

ATTN: Robert Hendrix

Test Start: 2014.09.12 @ 08:44:00

GENERAL INFORMATION:

Formation: **Oread**

Deviated: No Whipstock: ft (KB)

Time Tool Opened: 10:51:45

Time Test Ended: 17:38:30

Test Type: Conventional Bottom Hole (Initial)

Tester: Royal Fisher

Unit No: 54

Interval: 4058.00 ft (KB) To 4116.00 ft (KB) (TVD)

Reference Elevations: 3267.00 ft (KB)

Total Depth: 4116.00 ft (KB) (TVD)

3256.00 ft (CF)

Hole Diameter: 7.88 inches Hole Condition: Good

KB to GR/CF: 11.00 ft

Serial #: 6753 Outside

Press@RunDepth: 194.69 psig @ 4059.00 ft (KB)

Capacity: 8000.00 psig

Start Date: 2014.09.12

End Date: 2014.09.12

Last Calib.: 2014.09.12

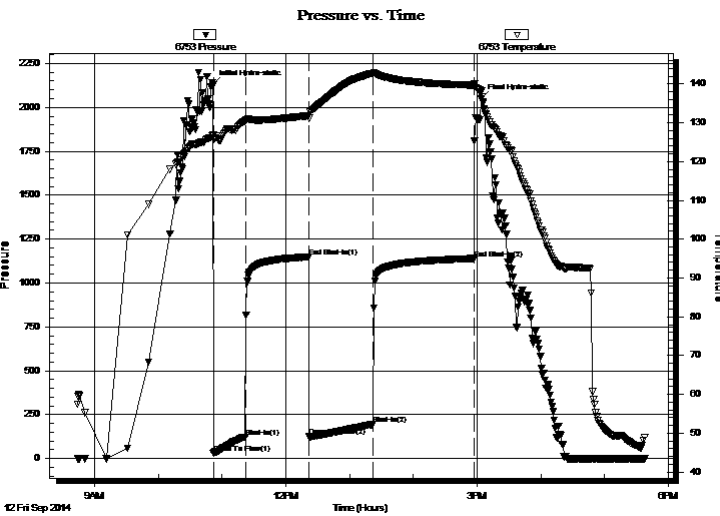
Start Time: 08:44:05

End Time: 17:38:30

Time On Btm: 2014.09.12 @ 10:51:30

Time Off Btm: 2014.09.12 @ 15:03:45

TEST COMMENT: 30 - IF - Surface blow built to 8"
60 - ISI - No Return
60 - FF - Surface blow built to bottom of the bucket in 53 min.
90 - FSI - No Return



PRESSURE SUMMARY

| Time (Min.) | Pressure (psig) | Temp (deg F) | Annotation |
|-------------|-----------------|--------------|----------------------|
| 0 | 2128.01 | 126.76 | Initial Hydro-static |
| 1 | 29.27 | 125.58 | Open To Flow (1) |
| 31 | 121.54 | 130.46 | Shut-In(1) |
| 91 | 1148.42 | 131.81 | End Shut-In(1) |
| 91 | 124.61 | 131.18 | Open To Flow (2) |
| 151 | 194.69 | 142.74 | Shut-In(2) |
| 246 | 1139.54 | 139.68 | End Shut-In(2) |
| 253 | 2048.10 | 137.79 | Final Hydro-static |

Recovery

| Length (ft) | Description | Volume (bbl) |
|-------------|----------------|--------------|
| 189.00 | MW - 5M - 95W | 0.93 |
| 126.00 | MW - 30M - 70W | 1.60 |
| 63.00 | WM - 70M - 30W | 0.88 |
| 20.00 | M - 100M | 0.28 |
| | | |
| | | |

Gas Rates

| | Choke (inches) | Pressure (psig) | Gas Rate (Mcf/d) |
|--|----------------|-----------------|------------------|
| | | | |



**TRILOBITE
TESTING, INC**

DRILL STEM TEST REPORT

TOOL DIAGRAM

Murfin Drilling Co., Inc.

6-2s-36w Rawlins,KS

250 N. Water, Ste 300
Wichita KS 67202

Frisbie 'A' #1-6

Job Ticket: 60117

DST#: 1

ATTN: Robert Hendrix

Test Start: 2014.09.12 @ 08:44:00

Tool Information

| | | | | |
|---------------------------|--------------------|-----------------------|--------------------------------|------------------------------------|
| Drill Pipe: | Length: 3848.69 ft | Diameter: 3.80 inches | Volume: 53.99 bbl | Tool Weight: 2500.00 lb |
| Heavy Wt. Pipe: | Length: 0.00 ft | Diameter: 0.00 inches | Volume: 0.00 bbl | Weight set on Packer: 25000.00 lb |
| Drill Collar: | Length: 207.34 ft | Diameter: 2.25 inches | Volume: 1.02 bbl | Weight to Pull Loose: 90000.00 lb |
| | | | <u>Total Volume: 55.01 bbl</u> | Tool Chased 0.00 ft |
| Drill Pipe Above KB: | 25.03 ft | | | String Weight: Initial 80000.00 lb |
| Depth to Top Packer: | 4058.00 ft | | | Final 80000.00 lb |
| Depth to Bottom Packer: | ft | | | |
| Interval between Packers: | 58.00 ft | | | |
| Tool Length: | 85.00 ft | | | |
| Number of Packers: | 2 | Diameter: 6.75 inches | | |

Tool Comments:

| Tool Description | Length (ft) | Serial No. | Position | Depth (ft) | Accum. Lengths |
|------------------|-------------|------------|----------|------------|----------------|
|------------------|-------------|------------|----------|------------|----------------|

| | | | | | |
|-----------------|-------|------|---------|---------|-------------------------------|
| Shut In Tool | 5.00 | | | 4036.00 | |
| Hydraulic tool | 5.00 | | | 4041.00 | |
| Jars | 5.00 | | | 4046.00 | |
| Safety Joint | 3.00 | | | 4049.00 | |
| Packer | 4.00 | | | 4053.00 | 27.00 Bottom Of Top Packer |
| Packer | 5.00 | | | 4058.00 | |
| Stubb | 1.00 | | | 4059.00 | |
| Recorder | 0.00 | 8368 | Inside | 4059.00 | |
| Recorder | 0.00 | 6753 | Outside | 4059.00 | |
| Perforations | 20.00 | | | 4079.00 | |
| Change Over Sub | 1.00 | | | 4080.00 | |
| Drill Pipe | 31.00 | | | 4111.00 | |
| Change Over Sub | 1.00 | | | 4112.00 | |
| Bullnose | 4.00 | | | 4116.00 | 58.00 Bottom Packers & Anchor |

Total Tool Length: 85.00



**TRILOBITE
TESTING, INC**

DRILL STEM TEST REPORT

FLUID SUMMARY

Murfin Drilling Co., Inc.

6-2s-36w Rawlins,KS

250 N. Water, Ste 300
Wichita KS 67202

Frisbie 'A' #1-6

Job Ticket: 60117

DST#: 1

ATTN: Robert Hendrix

Test Start: 2014.09.12 @ 08:44:00

Mud and Cushion Information

Mud Type: Gel Chem

Cushion Type:

Oil API:

deg API

Mud Weight: 9.00 lb/gal

Cushion Length:

ft

Water Salinity:

55000 ppm

Viscosity: 62.00 sec/qt

Cushion Volume:

bbbl

Water Loss: 7.17 in³

Gas Cushion Type:

Resistivity: 0.00 ohm.m

Gas Cushion Pressure:

psig

Salinity: 600.00 ppm

Filter Cake: 2.00 inches

Recovery Information

Recovery Table

| Length ft | Description | Volume bbbl |
|--------------|----------------|----------------|
| 189.00 | MW - 5M - 95W | 0.929 |
| 126.00 | MW - 30M - 70W | 1.600 |
| 63.00 | WM - 70M - 30W | 0.884 |
| 20.00 | M - 100M | 0.281 |

Total Length: 398.00 ft

Total Volume: 3.694 bbl

Num Fluid Samples: 0

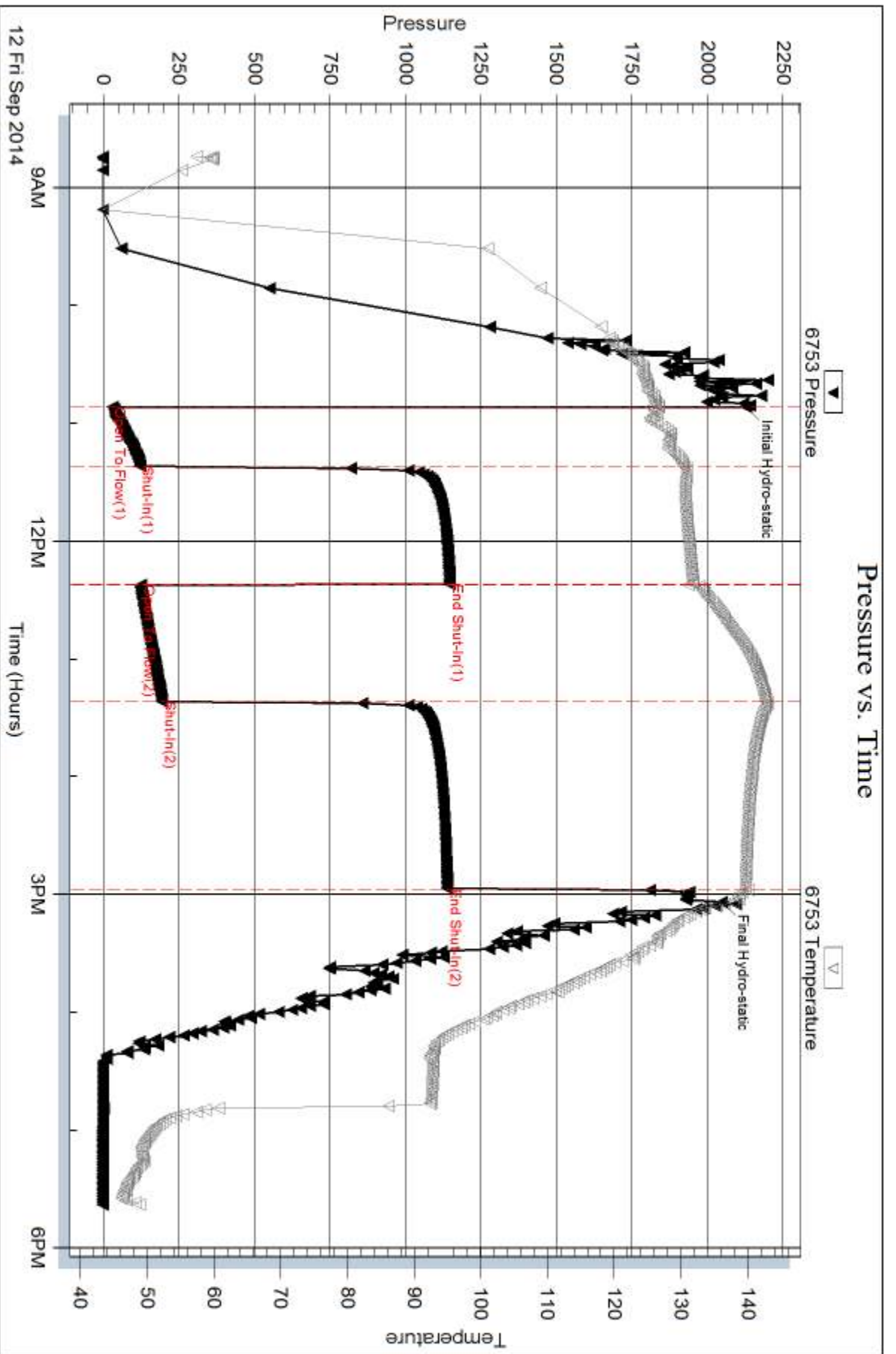
Num Gas Bombs: 0

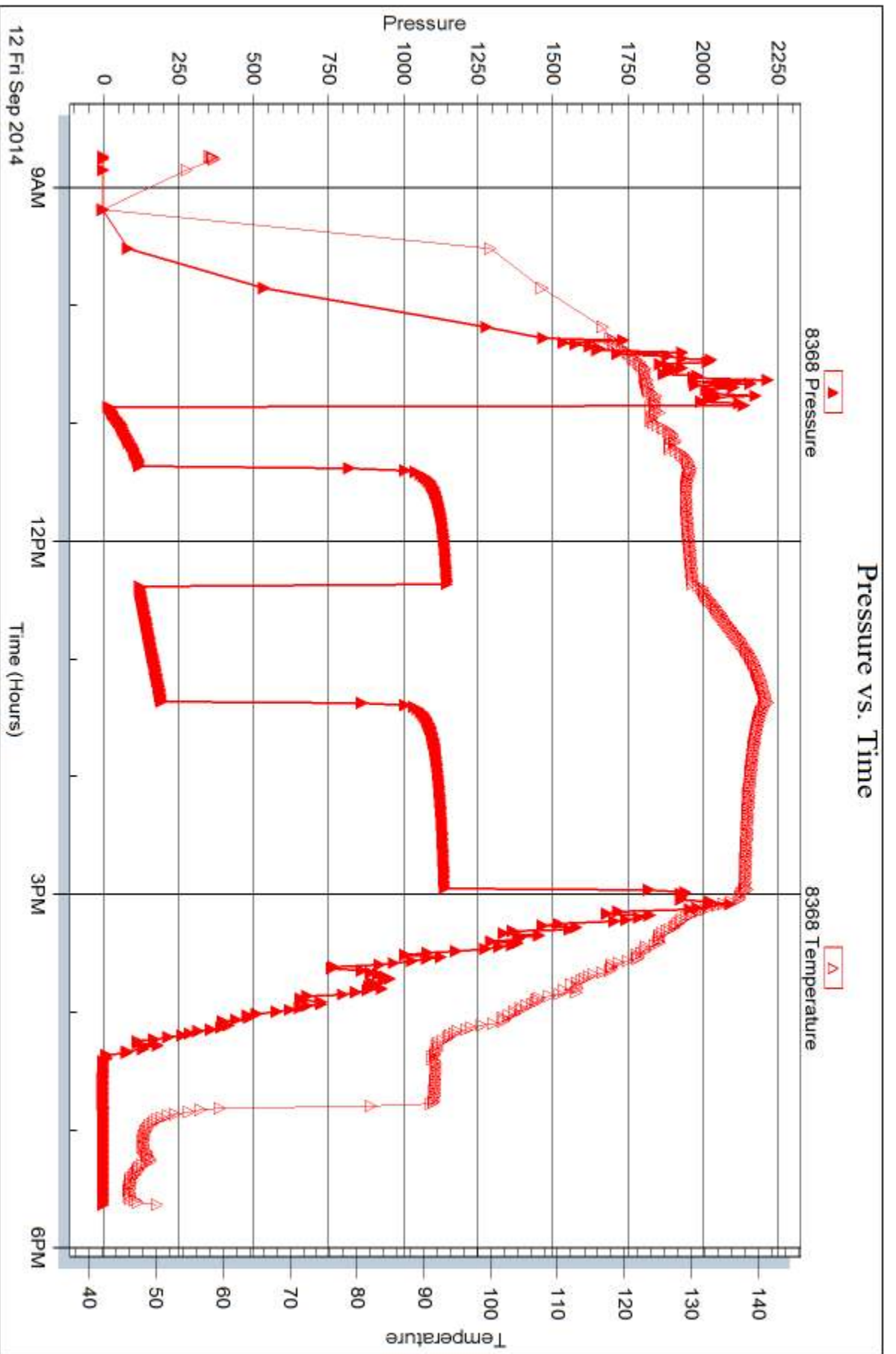
Serial #:

Laboratory Name:

Laboratory Location:

Recovery Comments:







DRILL STEM TEST REPORT

Prepared For: **Murfin Drilling Co., Inc.**

250 N. Water, Ste 300
Wichita KS 67202

ATTN: Robert Hendrix

Frisbie 'A' #1-6

6-2s-36w Rawlins,KS

Start Date: 2014.09.13 @ 08:20:00

End Date: 2014.09.13 @ 16:58:45

Job Ticket #: 60119 DST #: 2

Trilobite Testing, Inc
1515 Commerce Parkway Hays, KS 67601
ph: 785-625-4778 fax: 785-625-5620

Printed: 2014.09.18 @ 14:16:32



TRILOBITE TESTING, INC

DRILL STEM TEST REPORT

Murfin Drilling Co., Inc.

6-2s-36w Rawlins,KS

250 N. Water, Ste 300
Wichita KS 67202

Frisbie 'A' #1-6

Job Ticket: 60119

DST#: 2

ATTN: Robert Hendrix

Test Start: 2014.09.13 @ 08:20:00

GENERAL INFORMATION:

Formation: **LKC 'A'**

Deviated: No Whipstock: ft (KB)

Time Tool Opened: 10:10:15

Time Test Ended: 16:58:45

Test Type: Conventional Bottom Hole (Initial)

Tester: Royal Fisher

Unit No: 54

Interval: 4139.00 ft (KB) To 4230.00 ft (KB) (TVD)

Reference Elevations: 3267.00 ft (KB)

Total Depth: 4230.00 ft (KB) (TVD)

3256.00 ft (CF)

Hole Diameter: 7.88 inches Hole Condition: Good

KB to GR/CF: 11.00 ft

Serial #: 6753 Outside

Press@RunDepth: 150.79 psig @ 4140.00 ft (KB)

Capacity: 8000.00 psig

Start Date: 2014.09.13

End Date:

2014.09.13

Last Calib.: 2014.09.13

Start Time: 08:20:05

End Time:

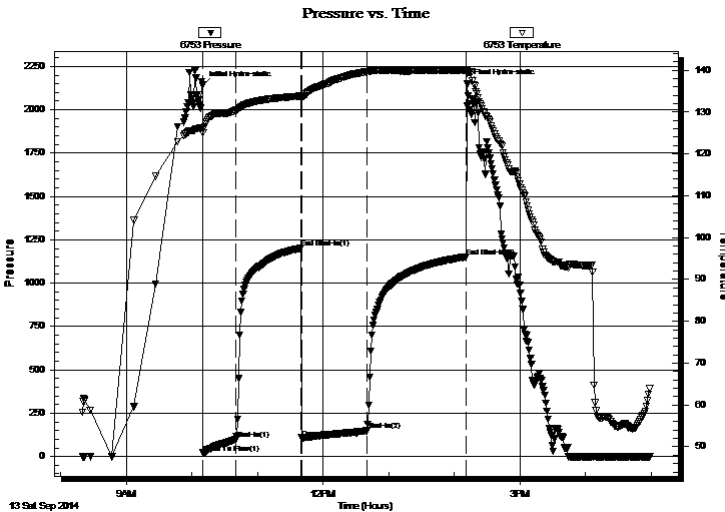
16:58:45

Time On Btm: 2014.09.13 @ 10:10:00

Time Off Btm: 2014.09.13 @ 14:12:00

TEST COMMENT: 30 - IF - Surface blow built up to 8 3/4"
60 - ISI - No Return
60 - FF - Surface blow built to bottom of bucket in 42 min.
90 - FSI - Return started 8 min. in and built to 2"

PRESSURE SUMMARY



| Time (Min.) | Pressure (psig) | Temp (deg F) | Annotation |
|-------------|-----------------|--------------|----------------------|
| 0 | 2141.28 | 126.28 | Initial Hydro-static |
| 1 | 21.47 | 125.01 | Open To Flow (1) |
| 31 | 97.61 | 130.41 | Shut-In(1) |
| 90 | 1202.06 | 133.85 | End Shut-In(1) |
| 91 | 108.50 | 133.49 | Open To Flow (2) |
| 151 | 150.79 | 139.67 | Shut-In(2) |
| 241 | 1152.29 | 139.96 | End Shut-In(2) |
| 242 | 2149.22 | 139.31 | Final Hydro-static |

Recovery

| Length (ft) | Description | Volume (bbl) |
|-------------|------------------------|--------------|
| 126.00 | OCWM - 50M - 30W - 20o | 0.62 |
| 174.00 | WMCO - 30M - 10W - 60o | 1.70 |
| 30.00 | Free Oil - 100o | 0.42 |
| | | |
| | | |

Gas Rates

| | Choke (inches) | Pressure (psig) | Gas Rate (Mcf/d) |
|--|----------------|-----------------|------------------|
| | | | |



**TRILOBITE
TESTING, INC.**

DRILL STEM TEST REPORT

TOOL DIAGRAM

Murfin Drilling Co., Inc.

6-2s-36w Rawlins,KS

250 N. Water, Ste 300
Wichita KS 67202

Frisbie 'A' #1-6

Job Ticket: 60119

DST#: 2

ATTN: Robert Hendrix

Test Start: 2014.09.13 @ 08:20:00

Tool Information

| | | | | |
|---------------------------|--------------------|-----------------------|--------------------------------|------------------------------------|
| Drill Pipe: | Length: 3937.35 ft | Diameter: 3.80 inches | Volume: 55.23 bbl | Tool Weight: 2500.00 lb |
| Heavy Wt. Pipe: | Length: 0.00 ft | Diameter: 0.00 inches | Volume: 0.00 bbl | Weight set on Packer: 25000.00 lb |
| Drill Collar: | Length: 207.34 ft | Diameter: 2.25 inches | Volume: 1.02 bbl | Weight to Pull Loose: 86000.00 lb |
| | | | <u>Total Volume: 56.25 bbl</u> | Tool Chased 0.00 ft |
| Drill Pipe Above KB: | 32.69 ft | | | String Weight: Initial 80000.00 lb |
| Depth to Top Packer: | 4139.00 ft | | | Final 81000.00 lb |
| Depth to Bottom Packer: | ft | | | |
| Interval between Packers: | 91.00 ft | | | |
| Tool Length: | 118.00 ft | | | |
| Number of Packers: | 2 | Diameter: 6.75 inches | | |

Tool Comments:

Tool Description

| Tool Description | Length (ft) | Serial No. | Position | Depth (ft) | Accum. Lengths |
|------------------|-------------|------------|----------|------------|-------------------------------|
| Shut In Tool | 5.00 | | | 4117.00 | |
| Hydraulic tool | 5.00 | | | 4122.00 | |
| Jars | 5.00 | | | 4127.00 | |
| Safety Joint | 3.00 | | | 4130.00 | |
| Packer | 4.00 | | | 4134.00 | 27.00 Bottom Of Top Packer |
| Packer | 5.00 | | | 4139.00 | |
| Stubb | 1.00 | | | 4140.00 | |
| Recorder | 0.00 | 8368 | Inside | 4140.00 | |
| Recorder | 0.00 | 6753 | Outside | 4140.00 | |
| Perforations | 21.00 | | | 4161.00 | |
| Change Over Sub | 1.00 | | | 4162.00 | |
| Drill Pipe | 63.00 | | | 4225.00 | |
| Change Over Sub | 1.00 | | | 4226.00 | |
| Bullnose | 4.00 | | | 4230.00 | 91.00 Bottom Packers & Anchor |

Total Tool Length: 118.00



**TRILOBITE
TESTING, INC**

DRILL STEM TEST REPORT

FLUID SUMMARY

Murfin Drilling Co., Inc.

6-2s-36w Rawlins,KS

250 N. Water, Ste 300
Wichita KS 67202

Frisbie 'A' #1-6

Job Ticket: 60119

DST#: 2

ATTN: Robert Hendrix

Test Start: 2014.09.13 @ 08:20:00

Mud and Cushion Information

Mud Type: Gel Chem

Cushion Type:

Oil API:

deg API

Mud Weight: 9.00 lb/gal

Cushion Length:

ft

Water Salinity:

ppm

Viscosity: 54.00 sec/qt

Cushion Volume:

bbbl

Water Loss: 7.97 in³

Gas Cushion Type:

Resistivity: 0.00 ohm.m

Gas Cushion Pressure:

psig

Salinity: 800.00 ppm

Filter Cake: 2.00 inches

Recovery Information

Recovery Table

| Length ft | Description | Volume bbl |
|--------------|------------------------|---------------|
| 126.00 | OCWM - 50M - 30W - 20o | 0.620 |
| 174.00 | WMCO - 30M - 10W - 60o | 1.700 |
| 30.00 | Free Oil - 100o | 0.421 |

Total Length: 330.00 ft Total Volume: 2.741 bbl

Num Fluid Samples: 0

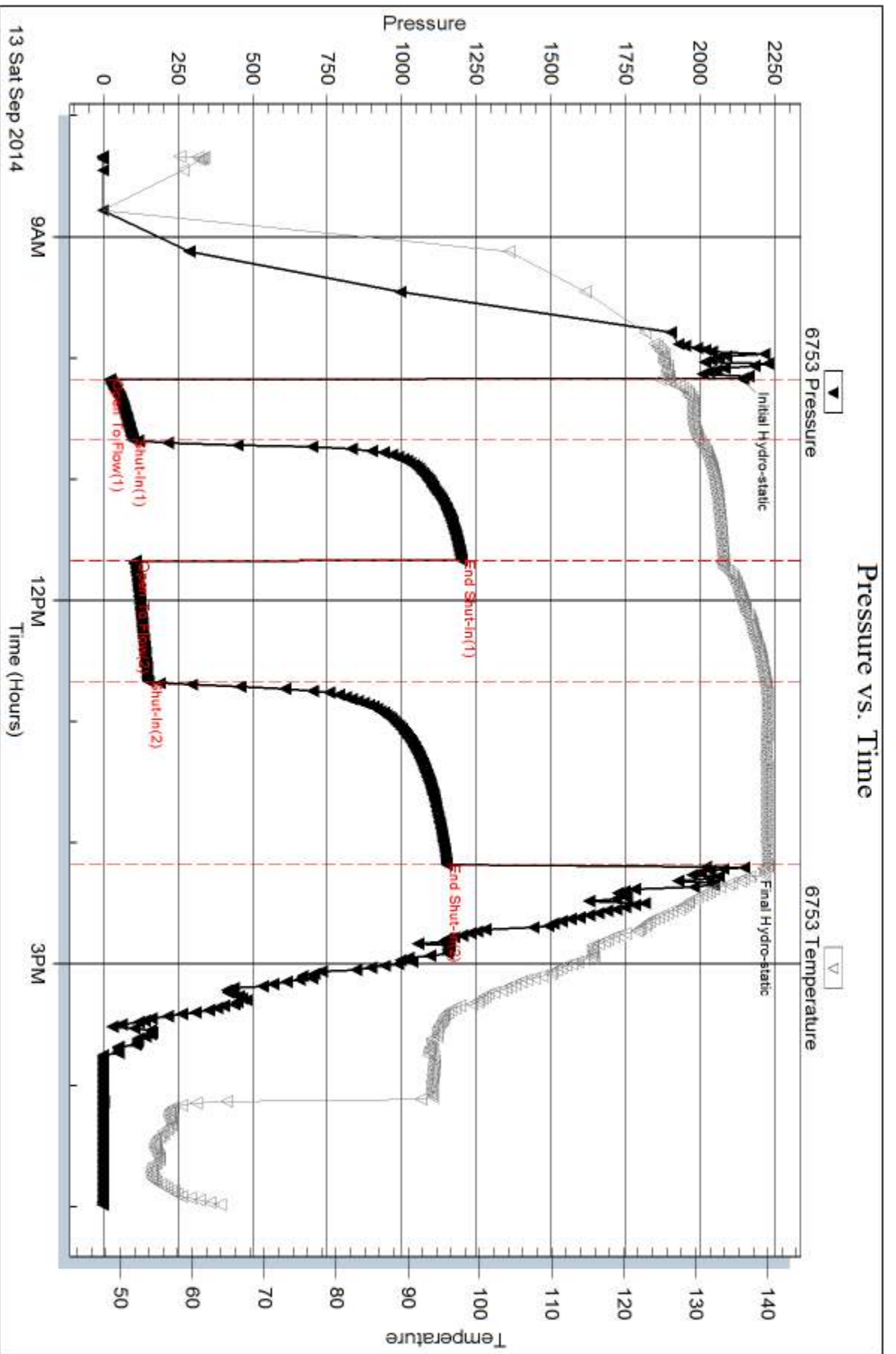
Num Gas Bombs: 0

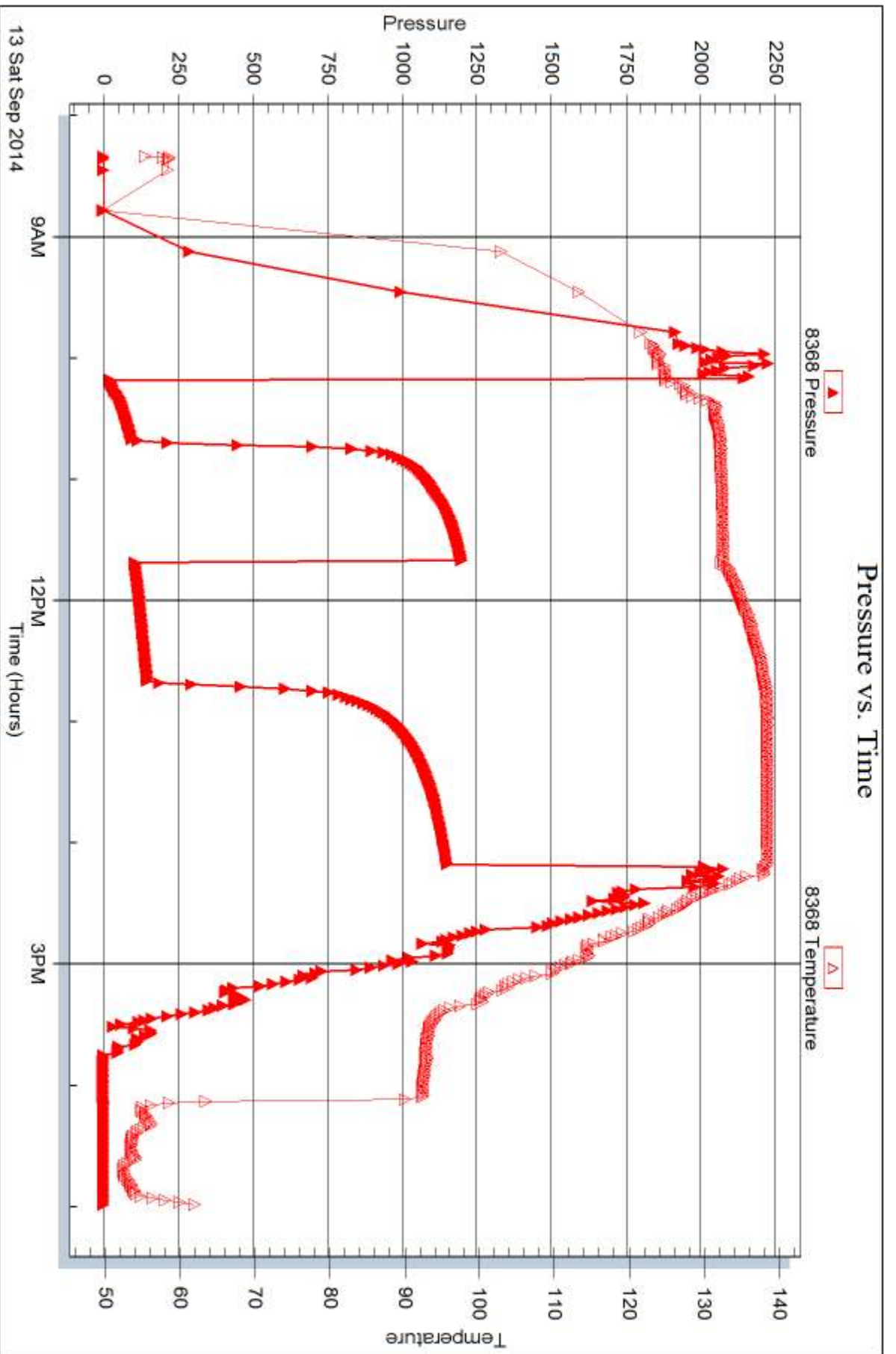
Serial #:

Laboratory Name:

Laboratory Location:

Recovery Comments:







DRILL STEM TEST REPORT

Prepared For: **Murfin Drilling Co., Inc.**

250 N. Water, Ste 300
Wichita KS 67202

ATTN: Robert Hendrix

Frisbie 'A' #1-6

6-2s-36w Rawlins,KS

Start Date: 2014.09.14 @ 02:05:00

End Date: 2014.09.14 @ 09:32:30

Job Ticket #: 60120 DST #: 3

Trilobite Testing, Inc
1515 Commerce Parkway Hays, KS 67601
ph: 785-625-4778 fax: 785-625-5620

Printed: 2014.09.18 @ 14:16:10



**TRILOBITE
TESTING, INC**

DRILL STEM TEST REPORT

Murfin Drilling Co., Inc.

6-2s-36w Rawlins,KS

250 N. Water, Ste 300
Wichita KS 67202

Frisbie 'A' #1-6

Job Ticket: 60120

DST#: 3

ATTN: Robert Hendrix

Test Start: 2014.09.14 @ 02:05:00

GENERAL INFORMATION:

Formation: **LKC 'D'**

Deviated: No Whipstock: ft (KB)

Time Tool Opened: 04:03:00

Time Test Ended: 09:32:30

Test Type: Conventional Bottom Hole (Initial)

Tester: Royal Fisher

Unit No: #54

Interval: 4219.00 ft (KB) To 4265.00 ft (KB) (TVD)

Reference Elevations: 3267.00 ft (KB)

Total Depth: 4265.00 ft (KB) (TVD)

3256.00 ft (CF)

Hole Diameter: 7.88 inches Hole Condition: Good

KB to GR/CF: 11.00 ft

Serial #: 6753

Outside

Press@RunDepth: 987.12 psig @ 4220.00 ft (KB)

Capacity: 8000.00 psig

Start Date: 2014.09.14

End Date:

2014.09.14

Last Calib.: 2014.09.14

Start Time: 02:05:05

End Time:

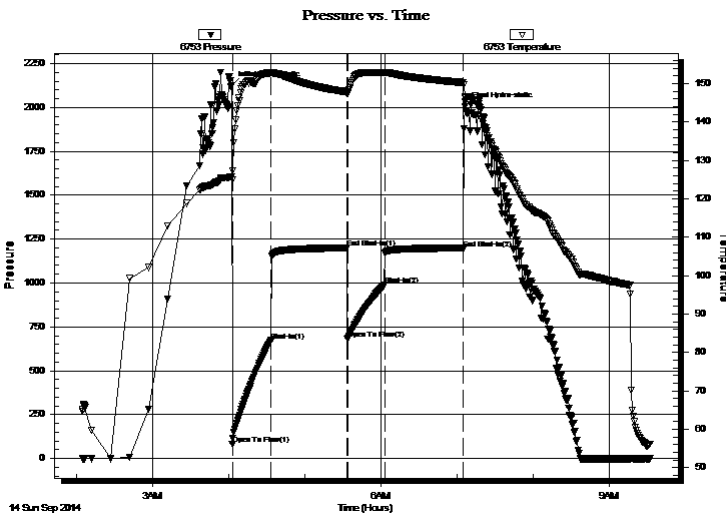
09:32:29

Time On Btm: 2014.09.14 @ 04:02:45

Time Off Btm: 2014.09.14 @ 07:06:45

TEST COMMENT: 30 - IF - Surface blow built to bottom of the bucket in 2 min.
60 - ISI - No Return
30 - FF - Surface blow built to bottom of bucket in 4 min.
60 - FSI - No Return

PRESSURE SUMMARY



| Time (Min.) | Pressure (psig) | Temp (deg F) | Annotation |
|-------------|-----------------|--------------|----------------------|
| 0 | 2124.28 | 125.79 | Initial Hydro-static |
| 1 | 80.57 | 124.98 | Open To Flow (1) |
| 31 | 671.81 | 152.81 | Shut-In(1) |
| 91 | 1199.89 | 147.81 | End Shut-In(1) |
| 91 | 679.47 | 147.51 | Open To Flow (2) |
| 121 | 987.12 | 152.88 | Shut-In(2) |
| 183 | 1196.32 | 150.28 | End Shut-In(2) |
| 184 | 2003.08 | 146.41 | Final Hydro-static |

Recovery

| Length (ft) | Description | Volume (bbl) |
|-------------|------------------------------|--------------|
| 945.00 | MW - 5M - 95W | 11.37 |
| 630.00 | OSMW - 15M - 85W - Oil spots | 8.84 |
| 630.00 | OSMW - 45M - 55W - Oil spots | 8.84 |
| | | |
| | | |

Gas Rates

| | Choke (inches) | Pressure (psig) | Gas Rate (Mcf/d) |
|--|----------------|-----------------|------------------|
| | | | |



**TRILOBITE
TESTING, INC**

DRILL STEM TEST REPORT

TOOL DIAGRAM

Murfin Drilling Co., Inc.

6-2s-36w Rawlins,KS

250 N. Water, Ste 300
Wichita KS 67202

Frisbie 'A' #1-6

Job Ticket: 60120

DST#: 3

ATTN: Robert Hendrix

Test Start: 2014.09.14 @ 02:05:00

Tool Information

| | | | | |
|---------------------------|--------------------|-----------------------|--------------------------------|------------------------------------|
| Drill Pipe: | Length: 4005.88 ft | Diameter: 3.80 inches | Volume: 56.19 bbl | Tool Weight: 2500.00 lb |
| Heavy Wt. Pipe: | Length: 0.00 ft | Diameter: 0.00 inches | Volume: 0.00 bbl | Weight set on Packer: 25000.00 lb |
| Drill Collar: | Length: 207.34 ft | Diameter: 2.25 inches | Volume: 1.02 bbl | Weight to Pull Loose: 96000.00 lb |
| | | | <u>Total Volume: 57.21 bbl</u> | Tool Chased 0.00 ft |
| Drill Pipe Above KB: | 21.22 ft | | | String Weight: Initial 80000.00 lb |
| Depth to Top Packer: | 4219.00 ft | | | Final 90000.00 lb |
| Depth to Bottom Packer: | ft | | | |
| Interval between Packers: | 46.00 ft | | | |
| Tool Length: | 73.00 ft | | | |
| Number of Packers: | 2 | Diameter: 6.75 inches | | |

Tool Comments:

| Tool Description | Length (ft) | Serial No. | Position | Depth (ft) | Accum. Lengths |
|------------------|-------------|------------|----------|------------|----------------|
|------------------|-------------|------------|----------|------------|----------------|

| | | | | | |
|-----------------|-------|------|---------|---------|-------------------------------|
| Shut In Tool | 5.00 | | | 4197.00 | |
| Hydraulic tool | 5.00 | | | 4202.00 | |
| Jars | 5.00 | | | 4207.00 | |
| Safety Joint | 3.00 | | | 4210.00 | |
| Packer | 4.00 | | | 4214.00 | 27.00 Bottom Of Top Packer |
| Packer | 5.00 | | | 4219.00 | |
| Stubb | 1.00 | | | 4220.00 | |
| Recorder | 0.00 | 8368 | Inside | 4220.00 | |
| Recorder | 0.00 | 6753 | Outside | 4220.00 | |
| Perforations | 8.00 | | | 4228.00 | |
| Change Over Sub | 1.00 | | | 4229.00 | |
| Drill Pipe | 31.00 | | | 4260.00 | |
| Change Over Sub | 1.00 | | | 4261.00 | |
| Bullnose | 4.00 | | | 4265.00 | 46.00 Bottom Packers & Anchor |

Total Tool Length: 73.00



**TRILOBITE
TESTING, INC**

DRILL STEM TEST REPORT

FLUID SUMMARY

Murfin Drilling Co., Inc.

6-2s-36w Rawlins,KS

250 N. Water, Ste 300
Wichita KS 67202

Frisbie 'A' #1-6

Job Ticket: 60120

DST#: 3

ATTN: Robert Hendrix

Test Start: 2014.09.14 @ 02:05:00

Mud and Cushion Information

Mud Type: Gel Chem

Cushion Type:

Oil API:

deg API

Mud Weight: 9.00 lb/gal

Cushion Length:

ft

Water Salinity:

32000 ppm

Viscosity: 54.00 sec/qt

Cushion Volume:

bbbl

Water Loss: 7.97 in³

Gas Cushion Type:

Resistivity: 0.00 ohm.m

Gas Cushion Pressure:

psig

Salinity: 800.00 ppm

Filter Cake: 2.00 inches

Recovery Information

Recovery Table

| Length ft | Description | Volume bbl |
|--------------|------------------------------|---------------|
| 945.00 | MW - 5M - 95W | 11.367 |
| 630.00 | OSMW - 15M - 85W - Oil spots | 8.837 |
| 630.00 | OSMW - 45M - 55W - Oil spots | 8.837 |

Total Length: 2205.00 ft

Total Volume: 29.041 bbl

Num Fluid Samples: 0

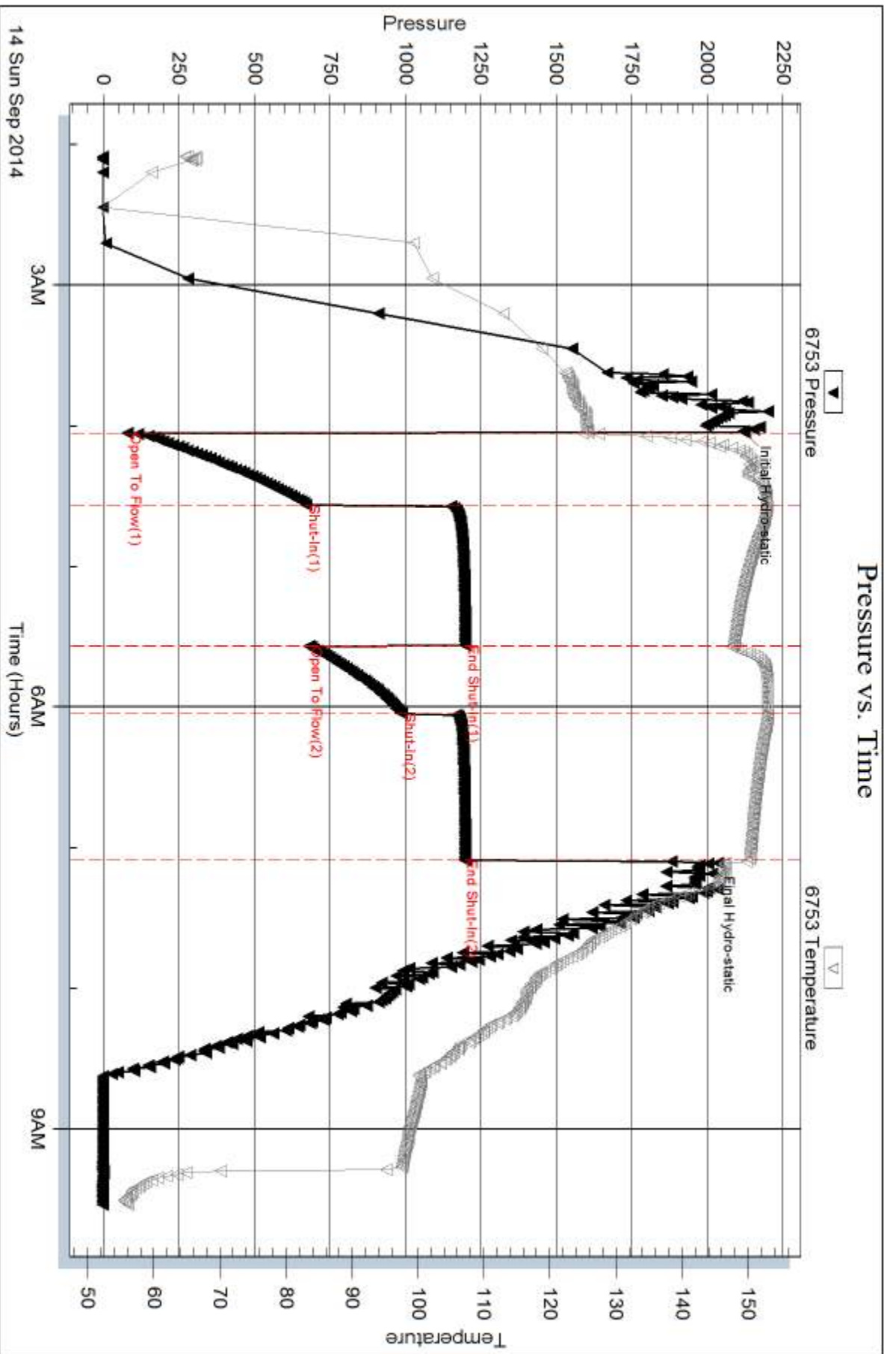
Num Gas Bombs: 0

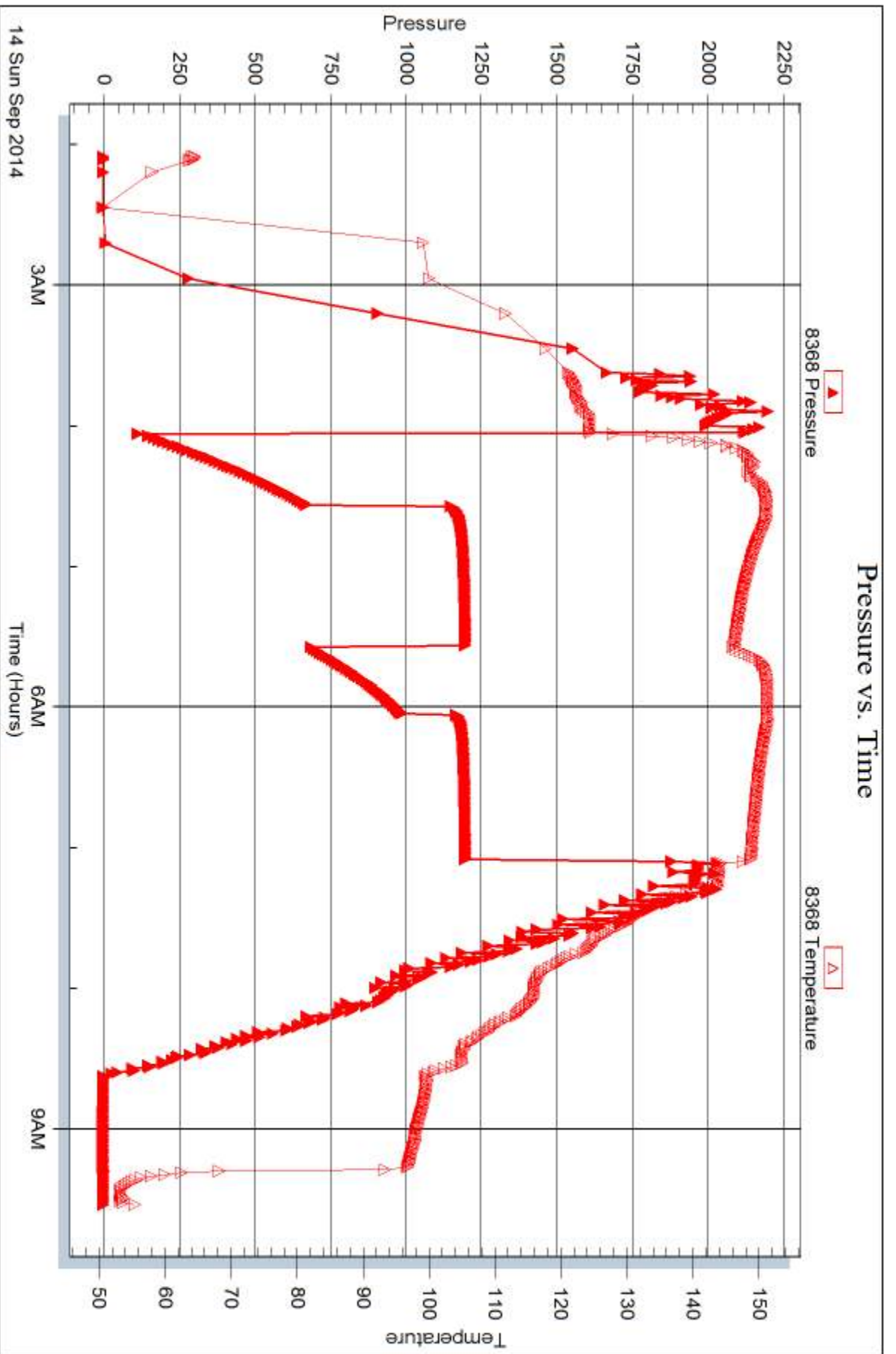
Serial #:

Laboratory Name:

Laboratory Location:

Recovery Comments:







DRILL STEM TEST REPORT

Prepared For: **Murfin Drilling Co., Inc.**

250 N. Water, Ste 300
Wichita KS 67202

ATTN: Robert Hendrix

Frisbie 'A' #1-6

6-2s-36w Rawlins,KS

Start Date: 2014.09.14 @ 21:06:00

End Date: 2014.09.15 @ 08:26:00

Job Ticket #: 60121 DST #: 4

Trilobite Testing, Inc
1515 Commerce Parkway Hays, KS 67601
ph: 785-625-4778 fax: 785-625-5620

Printed: 2014.09.18 @ 14:15:42



TRILOBITE TESTING, INC

DRILL STEM TEST REPORT

Murfin Drilling Co., Inc.

6-2s-36w Rawlins,KS

250 N. Water, Ste 300
Wichita KS 67202

Frisbie 'A' #1-6

Job Ticket: 60121

DST#: 4

ATTN: Robert Hendrix

Test Start: 2014.09.14 @ 21:06:00

GENERAL INFORMATION:

Formation: **LKC 'G'**
 Deviated: No Whipstock: ft (KB)
 Time Tool Opened: 22:38:00
 Time Test Ended: 08:26:00
 Interval: **4280.00 ft (KB) To 4334.00 ft (KB) (TVD)**
 Total Depth: 4334.00 ft (KB) (TVD)
 Hole Diameter: 7.88 inches Hole Condition: Good
 Test Type: Conventional Bottom Hole (Initial)
 Tester: Royal Fisher
 Unit No: #54
 Reference Elevations: 3267.00 ft (KB)
 3256.00 ft (CF)
 KB to GR/CF: 11.00 ft

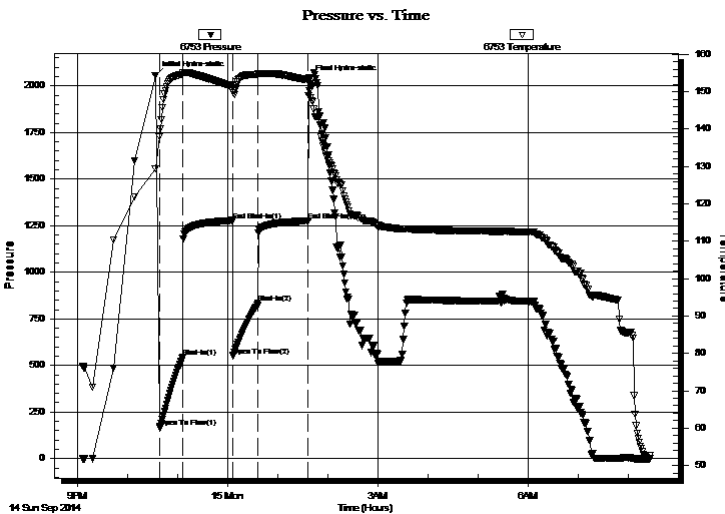
Serial #: 6753

Outside

Press@RunDepth: 835.41 psig @ 4281.00 ft (KB) Capacity: 8000.00 psig
 Start Date: 2014.09.14 End Date: 2014.09.15 Last Calib.: 2014.09.15
 Start Time: 21:06:05 End Time: 08:26:00 Time On Btm: 2014.09.14 @ 22:33:00
 Time Off Btm: 2014.09.15 @ 01:37:00

TEST COMMENT: 30 - IF - Surface blow built to bottom of bucket in 3 min.
 60 - ISI - No Return
 30 - FF - Surface blow built to bottom of bucket in 3 min.
 60 - FSI - No Return

PRESSURE SUMMARY



| Time (Min.) | Pressure (psig) | Temp (deg F) | Annotation |
|-------------|-----------------|--------------|----------------------|
| 0 | 2056.65 | 129.43 | Initial Hydro-static |
| 5 | 167.56 | 137.95 | Open To Flow (1) |
| 33 | 543.86 | 154.63 | Shut-In(1) |
| 93 | 1278.43 | 151.51 | End Shut-In(1) |
| 93 | 551.80 | 150.96 | Open To Flow (2) |
| 123 | 835.41 | 154.63 | Shut-In(2) |
| 184 | 1275.32 | 153.12 | End Shut-In(2) |
| 184 | 2036.50 | 152.88 | Final Hydro-static |

Recovery

| Length (ft) | Description | Volume (bbl) |
|-------------|-----------------|--------------|
| 493.00 | OCW - 98W - 2o | 5.03 |
| 493.00 | OCW - 80W - 20o | 6.92 |
| 493.00 | OCW - 10W 0 90o | 6.92 |
| 678.00 | FO - 100o | 9.51 |
| | | |
| | | |

Gas Rates

| | Choke (inches) | Pressure (psig) | Gas Rate (Mcf/d) |
|--|----------------|-----------------|------------------|
| | | | |



**TRILOBITE
TESTING, INC**

DRILL STEM TEST REPORT

TOOL DIAGRAM

Murfin Drilling Co., Inc.

6-2s-36w Rawlins,KS

250 N. Water, Ste 300
Wichita KS 67202

Frisbie 'A' #1-6

Job Ticket: 60121

DST#: 4

ATTN: Robert Hendrix

Test Start: 2014.09.14 @ 21:06:00

Tool Information

| | | | | |
|---------------------------|--------------------|-----------------------|--------------------------------|------------------------------------|
| Drill Pipe: | Length: 4069.23 ft | Diameter: 3.80 inches | Volume: 57.08 bbl | Tool Weight: 2500.00 lb |
| Heavy Wt. Pipe: | Length: 0.00 ft | Diameter: 0.00 inches | Volume: 0.00 bbl | Weight set on Packer: 25000.00 lb |
| Drill Collar: | Length: 207.34 ft | Diameter: 2.25 inches | Volume: 1.02 bbl | Weight to Pull Loose: 96000.00 lb |
| | | | <u>Total Volume: 58.10 bbl</u> | Tool Chased 0.00 ft |
| Drill Pipe Above KB: | 23.57 ft | | | String Weight: Initial 80000.00 lb |
| Depth to Top Packer: | 4280.00 ft | | | Final 90000.00 lb |
| Depth to Bottom Packer: | ft | | | |
| Interval between Packers: | 54.00 ft | | | |
| Tool Length: | 81.00 ft | | | |
| Number of Packers: | 2 | Diameter: 6.75 inches | | |

Tool Comments:

| Tool Description | Length (ft) | Serial No. | Position | Depth (ft) | Accum. Lengths |
|------------------|-------------|------------|----------|------------|----------------|
|------------------|-------------|------------|----------|------------|----------------|

| | | | | | |
|-----------------|-------|------|---------|---------|-------------------------------|
| Shut In Tool | 5.00 | | | 4258.00 | |
| Hydraulic tool | 5.00 | | | 4263.00 | |
| Jars | 5.00 | | | 4268.00 | |
| Safety Joint | 3.00 | | | 4271.00 | |
| Packer | 4.00 | | | 4275.00 | 27.00 Bottom Of Top Packer |
| Packer | 5.00 | | | 4280.00 | |
| Stubb | 1.00 | | | 4281.00 | |
| Recorder | 0.00 | 8368 | Inside | 4281.00 | |
| Recorder | 0.00 | 6753 | Outside | 4281.00 | |
| Perforations | 16.00 | | | 4297.00 | |
| Change Over Sub | 1.00 | | | 4298.00 | |
| Drill Pipe | 31.00 | | | 4329.00 | |
| Change Over Sub | 1.00 | | | 4330.00 | |
| Bullnose | 4.00 | | | 4334.00 | 54.00 Bottom Packers & Anchor |

Total Tool Length: 81.00



**TRILOBITE
TESTING, INC**

DRILL STEM TEST REPORT

FLUID SUMMARY

Murfin Drilling Co., Inc.

6-2s-36w Rawlins,KS

250 N. Water, Ste 300
Wichita KS 67202

Frisbie 'A' #1-6

Job Ticket: 60121

DST#: 4

ATTN: Robert Hendrix

Test Start: 2014.09.14 @ 21:06:00

Mud and Cushion Information

Mud Type: Gel Chem

Cushion Type:

Oil API:

27 deg API

Mud Weight: 9.00 lb/gal

Cushion Length:

ft

Water Salinity:

50000 ppm

Viscosity: 76.00 sec/qt

Cushion Volume:

bbbl

Water Loss: 5.59 in³

Gas Cushion Type:

Resistivity: 0.00 ohm.m

Gas Cushion Pressure:

psig

Salinity: 800.00 ppm

Filter Cake: 2.00 inches

Recovery Information

Recovery Table

| Length ft | Description | Volume bbbl |
|--------------|-----------------|----------------|
| 493.00 | OCW - 98W - 2o | 5.027 |
| 493.00 | OCW - 80W - 20o | 6.915 |
| 493.00 | OCW - 10W 0 90o | 6.915 |
| 678.00 | FO - 100o | 9.511 |

Total Length: 2157.00 ft Total Volume: 28.368 bbl

Num Fluid Samples: 0

Num Gas Bombs: 0

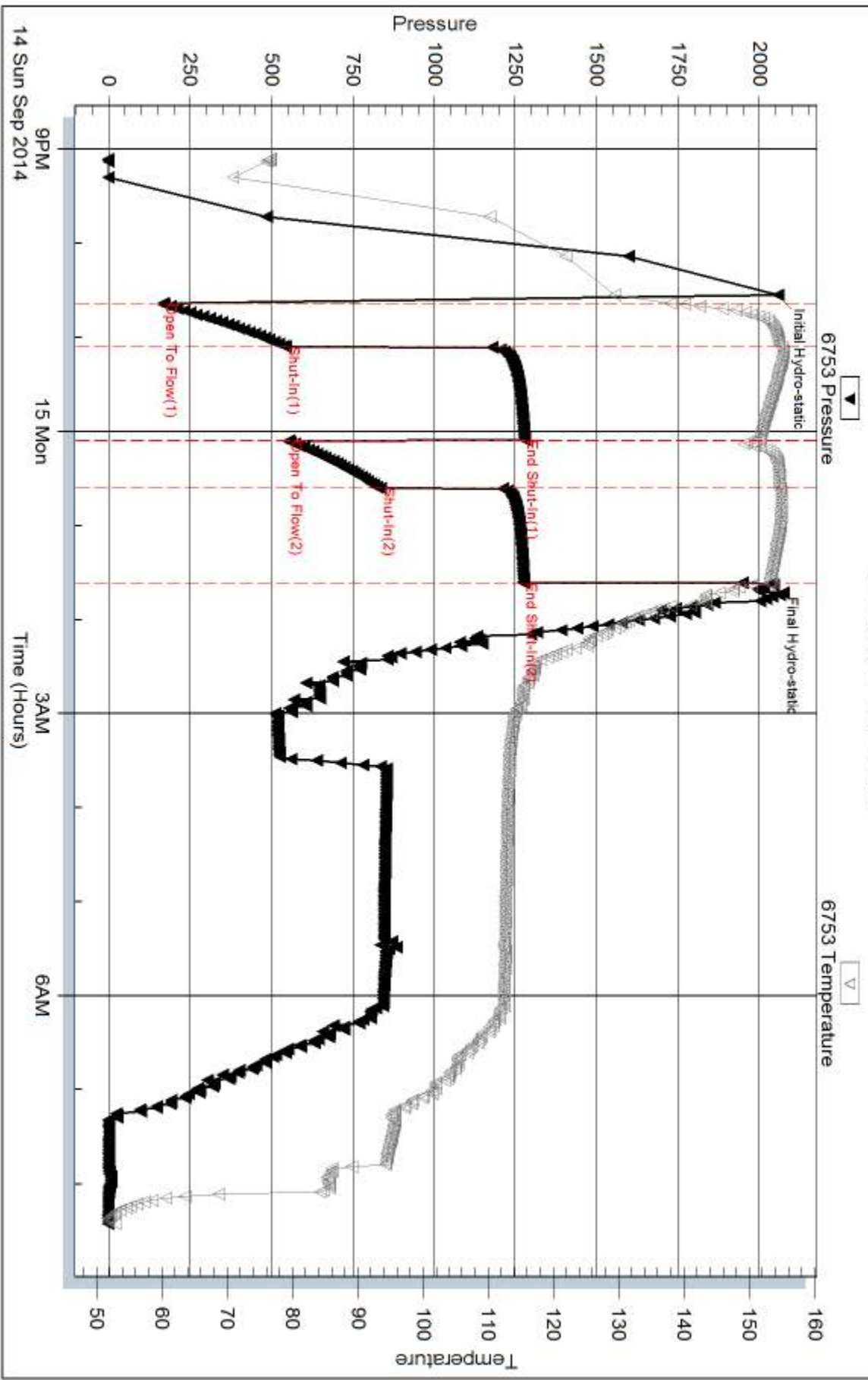
Serial #:

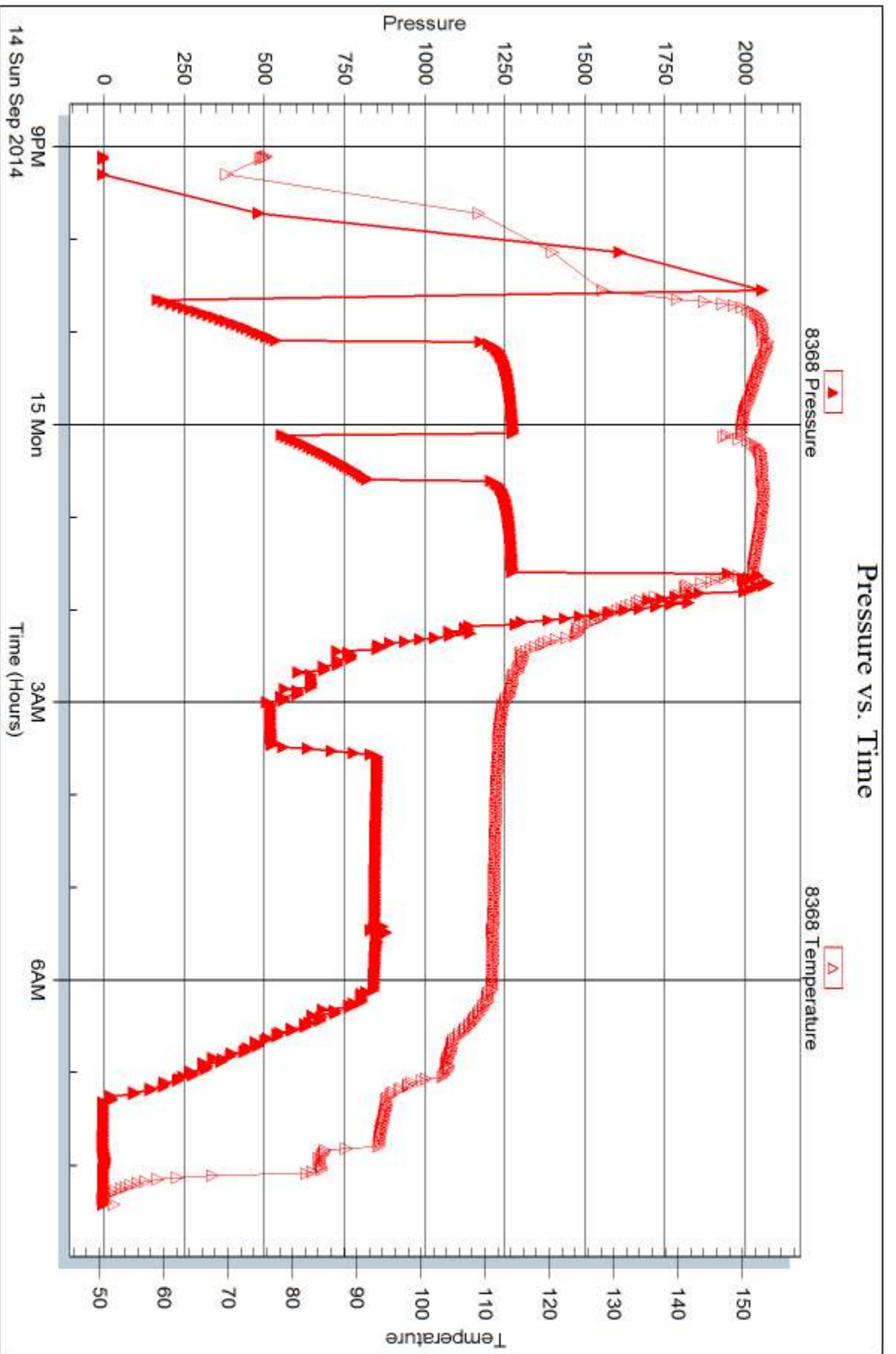
Laboratory Name:

Laboratory Location:

Recovery Comments: Waited on a truck from 2:55am to 5:00am

Pressure vs. Time







DRILL STEM TEST REPORT

Prepared For: **Murfin Drilling Co., Inc.**

250 N. Water, Ste 300
Wichita KS 67202

ATTN: Robert Hendrix

Frisbie 'A' #1-6

6-2s-36w Rawlins,KS

Start Date: 2014.09.15 @ 21:30:00

End Date: 2014.09.16 @ 06:11:30

Job Ticket #: 60122 DST #: 5

Trilobite Testing, Inc
1515 Commerce Parkway Hays, KS 67601
ph: 785-625-4778 fax: 785-625-5620

Printed: 2014.09.18 @ 14:14:27



TRILOBITE TESTING, INC

DRILL STEM TEST REPORT

Murfin Drilling Co., Inc.

6-2s-36w Rawlins,KS

250 N. Water, Ste 300
Wichita KS 67202

Frisbie 'A' #1-6

Job Ticket: 60122

DST#: 5

ATTN: Robert Hendrix

Test Start: 2014.09.15 @ 21:30:00

GENERAL INFORMATION:

Formation: **LKC 'H - J'**

Deviated: No Whipstock: ft (KB)

Time Tool Opened: 23:41:45

Time Test Ended: 06:11:30

Test Type: Conventional Bottom Hole (Initial)

Tester: Royal Fisher

Unit No: #54

Interval: 4338.00 ft (KB) To 4410.00 ft (KB) (TVD)

Reference Elevations: 3267.00 ft (KB)

Total Depth: 4410.00 ft (KB) (TVD)

3256.00 ft (CF)

Hole Diameter: 7.88 inches Hole Condition: Good

KB to GR/CF: 11.00 ft

Serial #: 8368

Inside

Press@RunDepth: 63.12 psig @ 4339.00 ft (KB)

Capacity: 8000.00 psig

Start Date: 2014.09.15

End Date:

2014.09.16

Last Calib.:

2014.09.16

Start Time:

21:30:05

End Time:

06:11:30

Time On Btm:

2014.09.15 @ 23:41:30

Time Off Btm:

2014.09.16 @ 03:42:15

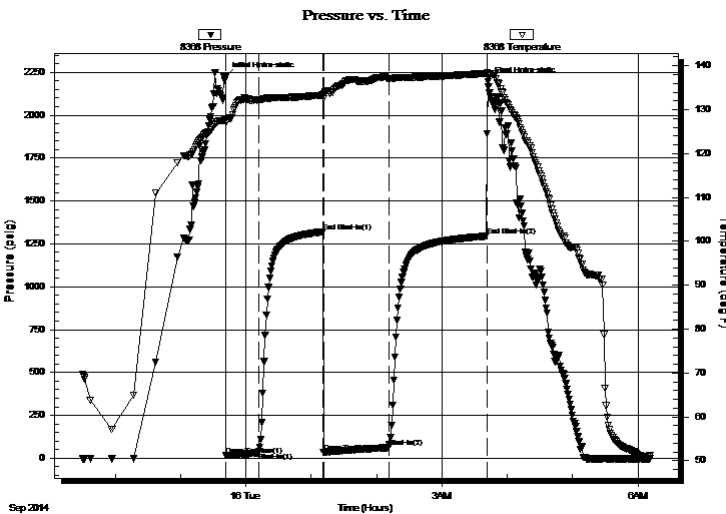
TEST COMMENT: 30 - IF - Surface blow built to 1 1/4"

60 - ISI - No Return

60 - FF - Surface blow started 27 min in, and held a weak surface blow

90 - FSI - No Return

PRESSURE SUMMARY



| Time (Min.) | Pressure (psig) | Temp (deg F) | Annotation |
|-------------|-----------------|--------------|----------------------|
| 0 | 2223.13 | 127.67 | Initial Hydro-static |
| 1 | 15.37 | 127.19 | Open To Flow (1) |
| 30 | 36.22 | 132.34 | Shut-In(1) |
| 90 | 1320.51 | 133.33 | End Shut-In(1) |
| 90 | 36.25 | 132.47 | Open To Flow (2) |
| 150 | 63.12 | 137.17 | Shut-In(2) |
| 240 | 1295.59 | 138.29 | End Shut-In(2) |
| 241 | 2197.06 | 137.77 | Final Hydro-static |

Recovery

| Length (ft) | Description | Volume (bbl) |
|-------------|-----------------|--------------|
| 78.00 | OCM - 80M - 20o | 0.38 |
| | | |
| | | |
| | | |

Gas Rates

| Choke (inches) | Pressure (psig) | Gas Rate (Mcf/d) |
|----------------|-----------------|------------------|
| | | |



**TRILOBITE
TESTING, INC**

DRILL STEM TEST REPORT

Murfin Drilling Co., Inc.

6-2s-36w Rawlins,KS

250 N. Water, Ste 300
Wichita KS 67202

Frisbie 'A' #1-6

Job Ticket: 60122

DST#: 5

ATTN: Robert Hendrix

Test Start: 2014.09.15 @ 21:30:00

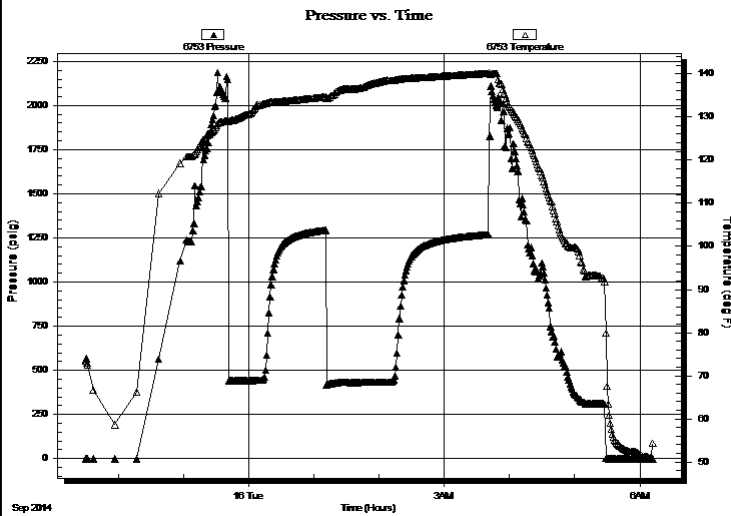
GENERAL INFORMATION:

| | | | |
|---|----------------------|---|--|
| Formation: LKC 'H - J' | | | |
| Deviated: No Whipstock: | ft (KB) | Test Type: Conventional Bottom Hole (Initial) | |
| Time Tool Opened: 23:41:45 | | Tester: Royal Fisher | |
| Time Test Ended: 06:11:30 | | Unit No: #54 | |
| Interval: 4338.00 ft (KB) To 4410.00 ft (KB) (TVD) | | Reference Elevations: 3267.00 ft (KB) | |
| Total Depth: 4410.00 ft (KB) (TVD) | | 3256.00 ft (CF) | |
| Hole Diameter: 7.88 inches | Hole Condition: Good | KB to GR/CF: 11.00 ft | |

Serial #: 6753

| | | | | |
|-----------------|------------|-----------|------------|-------------------------|
| Press@RunDepth: | psig @ | ft (KB) | Capacity: | 8000.00 psig |
| Start Date: | 2014.09.15 | End Date: | 2014.09.16 | Last Calib.: 2014.09.16 |
| Start Time: | 21:30:05 | End Time: | 06:11:45 | Time On Btm: |
| | | | | Time Off Btm: |

TEST COMMENT: 30 - IF - Surface blow built to 1 1/4"
60 - ISI - No Return
60 - FF - Surface blow started 27 min in, and held a weak surface blow
90 - FSI - No Return



PRESSURE SUMMARY

| Time (Min.) | Pressure (psig) | Temp (deg F) | Annotation |
|-------------|-----------------|--------------|------------|
| | | | |
| | | | |
| | | | |
| | | | |

Recovery

| Length (ft) | Description | Volume (bbl) |
|-------------|-----------------|--------------|
| 78.00 | OCM - 80M - 20o | 0.38 |
| | | |
| | | |
| | | |
| | | |

Gas Rates

| Choke (inches) | Pressure (psig) | Gas Rate (Mcf/d) |
|----------------|-----------------|------------------|
| | | |



**TRILOBITE
TESTING, INC.**

DRILL STEM TEST REPORT

TOOL DIAGRAM

Murfin Drilling Co., Inc.

6-2s-36w Rawlins,KS

250 N. Water, Ste 300
Wichita KS 67202

Frisbie 'A' #1-6

Job Ticket: 60122

DST#: 5

ATTN: Robert Hendrix

Test Start: 2014.09.15 @ 21:30:00

Tool Information

| | | | | |
|---------------------------|--------------------|-----------------------|--------------------------------|------------------------------------|
| Drill Pipe: | Length: 4132.00 ft | Diameter: 3.80 inches | Volume: 57.96 bbl | Tool Weight: 2500.00 lb |
| Heavy Wt. Pipe: | Length: 0.00 ft | Diameter: 0.00 inches | Volume: 0.00 bbl | Weight set on Packer: 25000.00 lb |
| Drill Collar: | Length: 207.34 ft | Diameter: 2.25 inches | Volume: 1.02 bbl | Weight to Pull Loose: 90000.00 lb |
| | | | <u>Total Volume: 58.98 bbl</u> | Tool Chased 0.00 ft |
| Drill Pipe Above KB: | 28.34 ft | | | String Weight: Initial 84000.00 lb |
| Depth to Top Packer: | 4338.00 ft | | | Final 84000.00 lb |
| Depth to Bottom Packer: | ft | | | |
| Interval between Packers: | 72.00 ft | | | |
| Tool Length: | 99.00 ft | | | |
| Number of Packers: | 2 | Diameter: 6.75 inches | | |

Tool Comments:

| Tool Description | Length (ft) | Serial No. | Position | Depth (ft) | Accum. Lengths |
|------------------|-------------|------------|----------|------------|----------------|
|------------------|-------------|------------|----------|------------|----------------|

| | | | | | |
|-----------------|-------|------|---------|---------|-------------------------------|
| Shut In Tool | 5.00 | | | 4316.00 | |
| Hydraulic tool | 5.00 | | | 4321.00 | |
| Jars | 5.00 | | | 4326.00 | |
| Safety Joint | 3.00 | | | 4329.00 | |
| Packer | 4.00 | | | 4333.00 | 27.00 Bottom Of Top Packer |
| Packer | 5.00 | | | 4338.00 | |
| Stubb | 1.00 | | | 4339.00 | |
| Recorder | 0.00 | 8368 | Inside | 4339.00 | |
| Recorder | 0.00 | 6753 | Outside | 4339.00 | |
| Perforations | 34.00 | | | 4373.00 | |
| Change Over Sub | 1.00 | | | 4374.00 | |
| Drill Pipe | 31.00 | | | 4405.00 | |
| Change Over Sub | 1.00 | | | 4406.00 | |
| Bullnose | 4.00 | | | 4410.00 | 72.00 Bottom Packers & Anchor |

Total Tool Length: 99.00



**TRILOBITE
TESTING, INC**

DRILL STEM TEST REPORT

FLUID SUMMARY

Murfin Drilling Co., Inc.

6-2s-36w Rawlins,KS

250 N. Water, Ste 300
Wichita KS 67202

Frisbie 'A' #1-6

Job Ticket: 60122

DST#: 5

ATTN: Robert Hendrix

Test Start: 2014.09.15 @ 21:30:00

Mud and Cushion Information

Mud Type: Gel Chem

Cushion Type:

Oil API:

deg API

Mud Weight: 9.00 lb/gal

Cushion Length:

ft

Water Salinity:

ppm

Viscosity: 69.00 sec/qt

Cushion Volume:

bbbl

Water Loss: 5.58 in³

Gas Cushion Type:

Resistivity: 0.00 ohm.m

Gas Cushion Pressure:

psig

Salinity: 800.00 ppm

Filter Cake: 2.00 inches

Recovery Information

Recovery Table

| Length ft | Description | Volume bbl |
|--------------|-----------------|---------------|
| 78.00 | OCM - 80M - 20o | 0.384 |

Total Length: 78.00 ft Total Volume: 0.384 bbl

Num Fluid Samples: 0

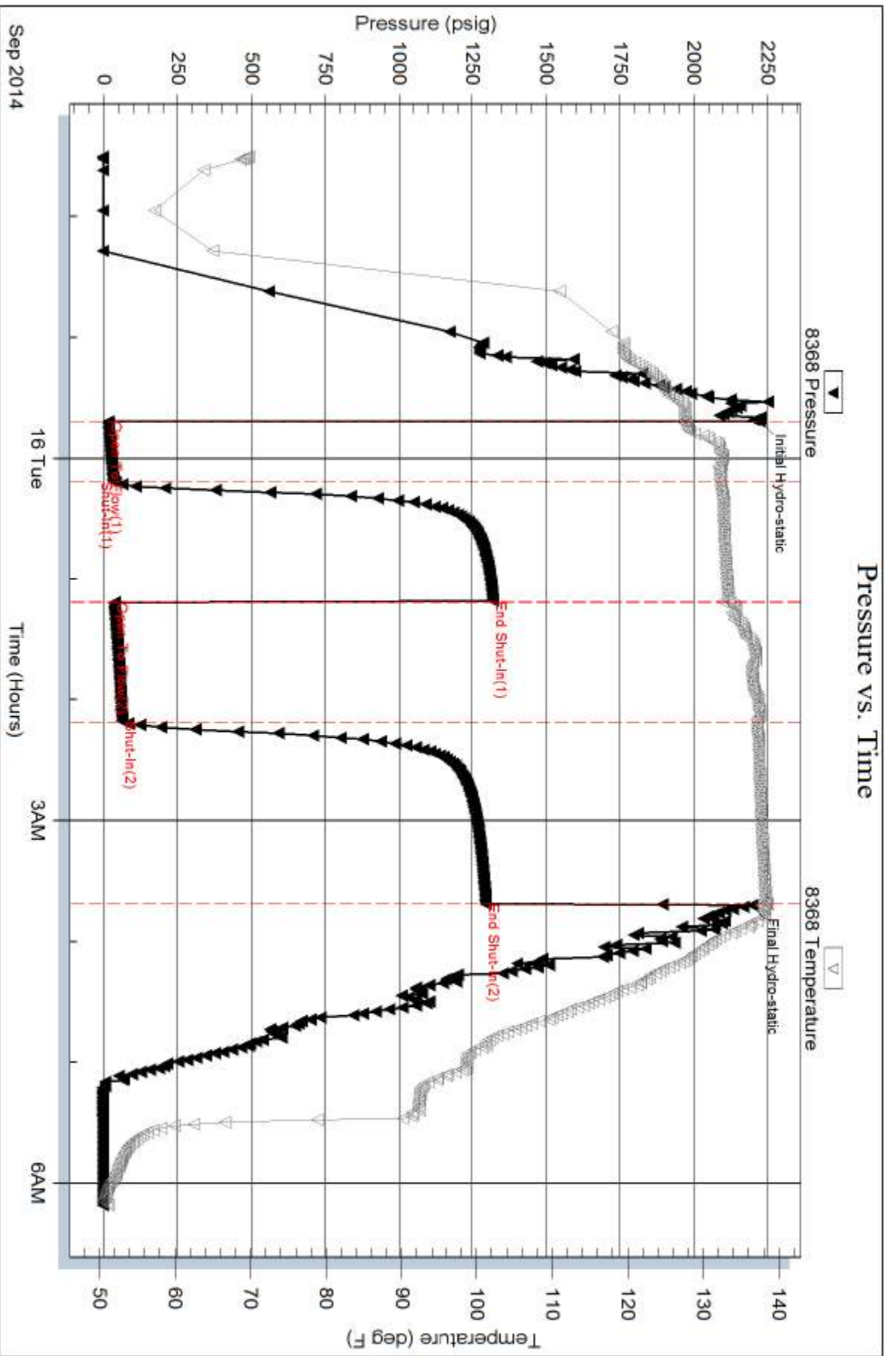
Num Gas Bombs: 0

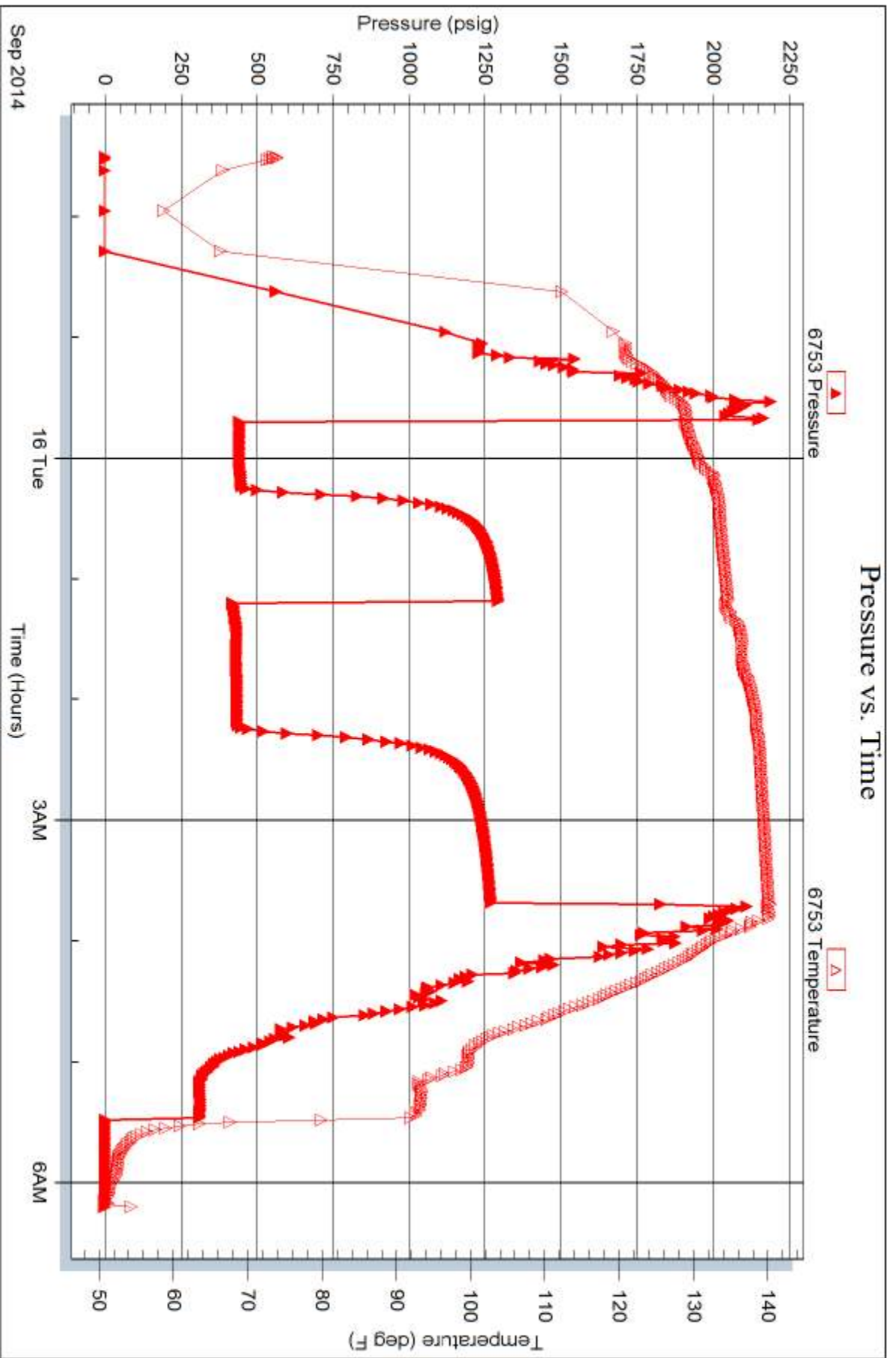
Serial #:

Laboratory Name:

Laboratory Location:

Recovery Comments:







TRILOBITE TESTING INC.

1515 Commerce Parkway • Hays, Kansas 67601

Test Ticket

NO. 60117

4/10

Well Name & No. Frisbie 'A' #1-6 Test No. 1 Date 9-12-14
 Company Murfin Drilling Co., Inc. Elevation 3267 KB 3256 GL
 Address 250 N Water, Ste 300 Wichita KS 67202
 Co. Rep / Geo. Robert Hendricks Rig Murfin #2
 Location: Sec. 6 Twp. 2S Rge. 36W Co. Lawlins State KS

Interval Tested 4058 - 4116 Zone Tested Oread
 Anchor Length 58' Drill Pipe Run 3848.69' Mud Wt. 9.0
 Top Packer Depth 4053 Drill Collars Run 207.34' Vis 62
 Bottom Packer Depth 4058 Wt. Pipe Run Ø WL 7.2
 Total Depth 4116 Chlorides 600 ppm System LCM 10#

Blow Description IF-Surface blow built up to 8"
ISI-No Return
FF-Surface blow built to bottom of the bucket in 53 min.
FST-No Return

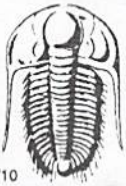
| Rec | Feet of | %gas | %oil | %water | %mud |
|-------------|------------|------|-----------|------------|------|
| <u>20'</u> | <u>Mud</u> | | | <u>100</u> | |
| <u>63'</u> | <u>WM</u> | | <u>30</u> | <u>70</u> | |
| <u>126'</u> | <u>mw</u> | | <u>70</u> | <u>30</u> | |
| <u>189'</u> | <u>mw</u> | | <u>95</u> | <u>5</u> | |

Rec Total 398' BHT 139°F Gravity _____ API RW .180 @ 57 °F Chlorides 55,000 ppm

(A) Initial Hydrostatic 2128 Test 1250 T-On Location 7:25 am
 (B) First Initial Flow 29 Jars 250 T-Started 8:44 am
 (C) First Final Flow 121 Safety Joint 75 T-Open 10:52 am
 (D) Initial Shut-In 1148 Circ Sub N/C T-Pulled 2:52 pm
 (E) Second Initial Flow 124 Hourly Standby _____ T-Out 5:38 pm
 (F) Second Final Flow 194 Mileage 114 RT 176.70 Comments _____
 (G) Final Shut-In 1139 Sampler _____
 (H) Final Hydrostatic 2048 Straddle _____ Ruined Shale Packer _____
 Shale Packer _____ Ruined Packer _____
 Extra Packer _____ Extra Copies _____
 Extra Recorder _____

Initial Open 30
 Initial Shut-In 60
 Final Flow 60
 Final Shut-In 90
 Sub Total 1751.70
 Total 1751.70
 MP/DST Disc't _____

Approved By _____ Our Representative [Signature]
 Trilobite Testing Inc. shall not be liable for damaged of any kind of the property or personnel of the one for whom a test is made, or for any loss suffered or sustained, directly or indirectly, through the use of its equipment, or its statements or opinion concerning the results of any test, tools lost or damaged in the hole shall be paid for at cost by the party for whom the test is made.



TRILOBITE TESTING INC.

1515 Commerce Parkway • Hays, Kansas 67601

Test Ticket

NO. 60119

Well Name & No. Frisbie 'A' #1-6 Test No. 2 Date 9-13-14
 Company Murfin Drilling Co., Inc Elevation 3267 KB 3256 GL
 Address 250 N. Water, Ste 300 Wichita Ks 67202
 Co. Rep / Geo. Robert Hendricks Rig Murfin #2
 Location: Sec. 6 Twp. 2S Rge. 36W Co. Rawlins State Ks

Interval Tested 4139-4230 Zone Tested Lans. 'A'
 Anchor Length 91' Drill Pipe Run 3937.35' Mud Wt. 9.4
 Top Packer Depth 4134 Drill Collars Run 207.34' Vis 54
 Bottom Packer Depth 4139 Wt. Pipe Run 0 WL 8.0
 Total Depth 4230 Chlorides 800 ppm System LCM 8#

Blow Description IF-Surface blow built to 8 3/4"
ISI-No Return
FF-Surface blow built to bottom of bucket in 42 min.
FSI-Return started 8min. in and built to 2"

| Rec | Feet of | %gas | %oil | %water | %mud |
|-------------|-----------------|------------|-----------|-----------|------|
| <u>30'</u> | <u>Free Oil</u> | <u>100</u> | | | |
| <u>174'</u> | <u>ccwm</u> | <u>60</u> | <u>10</u> | <u>30</u> | |
| <u>126'</u> | <u>ccwm</u> | <u>20</u> | <u>30</u> | <u>50</u> | |
| Rec | Feet of | %gas | %oil | %water | %mud |
| Rec | Feet of | %gas | %oil | %water | %mud |

Rec Total 330' BHT 140°F Gravity 36@60 API RW @ °F Chlorides ppm

(A) Initial Hydrostatic 2141 Test 1250 T-On Location 7:45am
 (B) First Initial Flow 21 Jars 250 T-Started 8:20am
 (C) First Final Flow 97 Safety Joint 75 T-Open 10:10am
 (D) Initial Shut-In 1202 Circ Sub N/C T-Pulled 2:10pm
 (E) Second Initial Flow 108 Hourly Standby T-Out 4:59pm
 (F) Second Final Flow 150 Mileage 114 R/T 176.70 Comments Bull nose keeps
 (G) Final Shut-In 1152 Sampler plugging up.
 (H) Final Hydrostatic 2149 Straddle Ruined Shale Packer
 Shale Packer Ruined Packer
 Extra Packer Extra Copies
 Extra Recorder Sub Total
 Day Standby Total
 Accessibility MP/DST Disc't

Initial Open 30
 Initial Shut-In 60
 Final Flow 60
 Final Shut-In 90
 Sub Total 1751.70

Approved By Our Representative [Signature]

Trilobite Testing Inc. shall not be liable for damaged of any kind of the property or personnel of the one for whom a test is made, or for any loss suffered or sustained, directly or indirectly, through the use of its equipment, or its statements or opinion concerning the results of any test, tools lost or damaged in the hole shall be paid for at cost by the party for whom the test is made.



TRILOBITE TESTING INC.

1515 Commerce Parkway • Hays, Kansas 67601

Test Ticket

NO. 60120

Well Name & No. Frisbie 'A' #1-6 Test No. 3 Date 9-14-14
 Company Murfin Drilling Co., Inc Elevation 3267 KB 3256 GL
 Address 250 N. Water, Ste 300 Wichita Ks 67202
 Co. Rep / Geo. Robert Hendricks Rig Murfin #2
 Location: Sec. 6 Twp. 2N Rge. 36W Co. Rawlins State Ks

Interval Tested 4219'-4265' Zone Tested Lans. - 'D'
 Anchor Length 46' Drill Pipe Run 4005.88' Mud Wt. 9.4
 Top Packer Depth 4214' Drill Collars Run 207.34' Vis 54
 Bottom Packer Depth 4219' Wt. Pipe Run Ø WL 8.0
 Total Depth 4265' Chlorides 800 ppm System LCM 8#

Blow Description IF - Surface blow built to bottom of bucket in 2 min.
ISZ - No Return
FF - Surface blow built to bottom of bucket in 4 min.
FSZ - No Return

| Rec | Feet of | %gas | spots | %oil | %water | %mud |
|-------------|-------------|------|-------|-----------|-----------|------|
| <u>630'</u> | <u>OSMW</u> | | | <u>55</u> | <u>45</u> | |
| <u>630</u> | <u>OSMW</u> | | | <u>85</u> | <u>15</u> | |
| <u>945'</u> | <u>Ø MW</u> | | | <u>95</u> | <u>5</u> | |
| Rec | Feet of | %gas | | %oil | %water | %mud |
| Rec | Feet of | %gas | | %oil | %water | %mud |

Rec Total 2205' BHT 150°F Gravity _____ API RW .393 @ 51 °F Chlorides 32,000 ppm

(A) Initial Hydrostatic 2124 Test 1250 T-On Location 1:45 am
 (B) First Initial Flow 80 Jars 250 T-Started 2:05 am
 (C) First Final Flow 671 Safety Joint 75 T-Open 4:03 am
 (D) Initial Shut-In 1199 Circ Sub N/C T-Pulled 7:03 am
 (E) Second Initial Flow 679 Hourly Standby _____ T-Out 9:33 am
 (F) Second Final Flow 987 Mileage 114 R/T 176.70 Comments _____
 (G) Final Shut-In 1196 Sampler _____
 (H) Final Hydrostatic 2003 Straddle _____

Initial Open 30 Ruined Shale Packer _____
 Initial Shut-In 60 Ruined Packer _____
 Final Flow 30 Extra Packer _____
 Final Shut-In 60 Extra Recorder _____
 Sub Total 0
 Total 1751.70
 Sub Total 1751.70 MP/DST Disc't _____

Approved By _____ Our Representative [Signature]

TriLOBITE Testing Inc. shall not be liable for damaged of any kind of the property or personnel of the one for whom a test is made, or for any loss suffered or sustained, directly or indirectly, through the use of its equipment, or its statements or opinion concerning the results of any test, tools lost or damaged in the hole shall be paid for at cost by the party for whom the test is made.



TRILOBITE TESTING INC.

1515 Commerce Parkway • Hays, Kansas 67601

Test Ticket

NO. 60121

Well Name & No. Frisbie 'A' #1-6 Test No. 4 Date 9-14-14
 Company Murfin Drilling Co., Inc. Elevation 3267 KB 3256 GL
 Address 250 N. Water, Ste 300 Wichita KS 67202
 Co. Rep / Geo. Robert Hendricks Rig Murfin #2
 Location: Sec. 6 Twp. 2N Rge. 36W Co. Rawlins State KS

Interval Tested 4280 - 4334 Zone Tested Lans. - 'G'
 Anchor Length 54 Drill Pipe Run 4069.23 Mud Wt. 9.1
 Top Packer Depth 4275 Drill Collars Run 207.34 Vis 76
 Bottom Packer Depth 4280 Wt. Pipe Run 0 WL 5.6
 Total Depth 4334 Chlorides 800 ppm System LCM 10#

Blow Description IF - Surface blow built to bottom of bucket in 3 min.
ISI - No Return
FF - Surface blow built to bottom of bucket in 3 min.

678' FSI - No Return

| Rec | Feet of | %gas | %oil | %water | %mud |
|----------------|---------------------------|------|------|-------------------------|------|
| 493 | Free Oil - 493 | 100 | | | |
| <u>493</u> | <u>OCW</u> | 910 | | 80 <u>10</u> | |
| <u>493</u> | <u>OCW</u> | 20 | | 80 | |
| <u>493</u> | <u>OCW</u> | 2 | | 98 | |

Rec Total 2157' BHT 153°F Gravity 27 corrected API RW .195 @ 54 °F Chlorides 50,000 ppm

(A) Initial Hydrostatic 2056 Test 1250 T-On Location 9:00pm
 (B) First Initial Flow 167 Jars 250 T-Started 9:06pm
 (C) First Final Flow 543 Safety Joint 75 T-Open 10:36pm
 (D) Initial Shut-In 1278 Circ Sub Dropped bar T-Pulled 1:36pm am
 (E) Second Initial Flow 557 Hourly Standby 1.5h 150 50 T-Out 8:27am
 (F) Second Final Flow 835 Mileage 114 RT 176.70
 (G) Final Shut-In 1275 Sampler
 (H) Final Hydrostatic 2036 Straddle
 Shale Packer
 Extra Packer
 Extra Recorder
 Day Standby
 Accessibility

Comments waited on a truck from 2:55am to 5:00am

Initial Open 30
 Initial Shut-In 60
 Final Flow 30
 Final Shut-In 60

Sub Total 0
 Total 1951.70
 MP/DST Disc't _____

Sub Total 1951.70

Approved By _____ Our Representative [Signature]

Trilobite Testing Inc. shall not be liable for damaged of any kind of the property or personnel of the one for whom a test is made, or for any loss suffered or sustained, directly or indirectly, through the use of its equipment, or its statements or opinion concerning the results of any test, tools lost or damaged in the hole shall be paid for at cost by the party for whom the test is made.



TRILOBITE TESTING INC.

1515 Commerce Parkway • Hays, Kansas 67601

Test Ticket

NO. 60122

4/10

Well Name & No. Frisbie A' #1-6 Test No. 5 Date 9-15-14
 Company Murkin Drilling Co., Inc. Elevation 3267 KB 3256 GL
 Address 250 N. water, Ste 300 Wichita ks 67202
 Co. Rep / Geo. Robert Hendrix Rig Murkin #2
 Location: Sec. 6 Twp. 2S Rge. 36W Co. Rawlins State KS

Interval Tested 4338 - 4410 Zone Tested Lans, H-J
 Anchor Length 72' Drill Pipe Run 4132 Mud Wt. 9.2
 Top Packer Depth 4333 Drill Collars Run 207.34' Vis 69
 Bottom Packer Depth 4338 Wt. Pipe Run 0 WL 5.6
 Total Depth 4410 Chlorides 800 ppm System LCM 9#
 Blow Description IF - surface blow built to 1 1/4"
ISI - No Return
FF - surface blow started 27 min. in and built to
FST - No Return

| Rec | Feet of | %gas | %oil | %water | %mud |
|------------|------------|-----------|------|-----------|------|
| <u>78'</u> | <u>OCM</u> | <u>20</u> | | <u>80</u> | |
| Rec | Feet of | %gas | %oil | %water | %mud |
| Rec | Feet of | %gas | %oil | %water | %mud |
| Rec | Feet of | %gas | %oil | %water | %mud |
| Rec | Feet of | %gas | %oil | %water | %mud |

Rec Total 78' BHT 138°F Gravity 1250 API RW 250 @ 176.70 °F Chlorides 800 ppm

(A) Initial Hydrostatic 2223 Test 1250 T-On Location 9:10 pm
 (B) First Initial Flow 15 Jars 250 T-Started 9:30 pm
 (C) First Final Flow 36 Safety Joint 75 T-Open 11:41 pm
 (D) Initial Shut-In 1320 Circ Sub N/C T-Pulled 3:41 am
 (E) Second Initial Flow 36 Hourly Standby T-Out 6:12 am
 (F) Second Final Flow 63 Mileage 114 RT 176.70 Comments Picked up tool
 (G) Final Shut-In 1295 Sampler 176.70 on 9-17-14 on location from
 (H) Final Hydrostatic 2197 Straddle 3:35 pm to 5:00 pm
 Ruined Shale Packer
 Ruined Packer
 Extra Copies
 Initial Open 33 Extra Packer
 Initial Shut-In 60 Extra Recorder
 Final Flow 60 Day Standby 1d 8.75h Sub Total 800
 Final Shut-In 90 Accessibility Total 2728.40
 Sub Total 1928.40 MP/DST Disc't

Approved By _____ Our Representative [Signature]
 Trilobite Testing Inc. shall not be liable for damaged of any kind of the property or personnel of the one for whom a test is made, or for any loss suffered or sustained, directly or indirectly, through the use of its equipment, or its statements or opinion concerning the results of any test, tools lost or damaged in the hole shall be paid for at cost by the party for whom the test is made.