



**TRILOBITE TESTING, INC.**

# DRILL STEM TEST REPORT

Samuel Gary Jr. & Associates

**35/3s/36w Rawlins KS**

1515 Wynkoop STE 700  
Denver, CO 80202

**Fisher Cattle #2-35**

Job Ticket: 60067

**DST#: 1**

ATTN: Chris Mitchell

Test Start: 2014.09.05 @ 18:25:00

## GENERAL INFORMATION:

Formation: **Oread**

Deviated: No Whipstock: ft (KB)

Time Tool Opened: 21:16:45

Time Test Ended: 03:36:15

Test Type: Conventional Bottom Hole (Initial)

Tester: James Winder

Unit No: 57

**Interval: 4042.00 ft (KB) To 4120.00 ft (KB) (TVD)**

Reference Elevations: 3257.00 ft (KB)

Total Depth: 4120.00 ft (KB) (TVD)

3252.00 ft (CF)

Hole Diameter: 7.88 inches Hole Condition: Fair

KB to GR/CF: 5.00 ft

**Serial #: 8791**

**Inside**

Press @ Run Depth: 18.80 psig @ 4043.00 ft (KB)

Capacity: 8000.00 psig

Start Date: 2014.09.05

End Date:

2014.09.06

Last Calib.:

2014.09.06

Start Time: 18:25:05

End Time:

03:36:15

Time On Btm:

2014.09.05 @ 21:16:30

Time Off Btm:

2014.09.06 @ 00:59:30

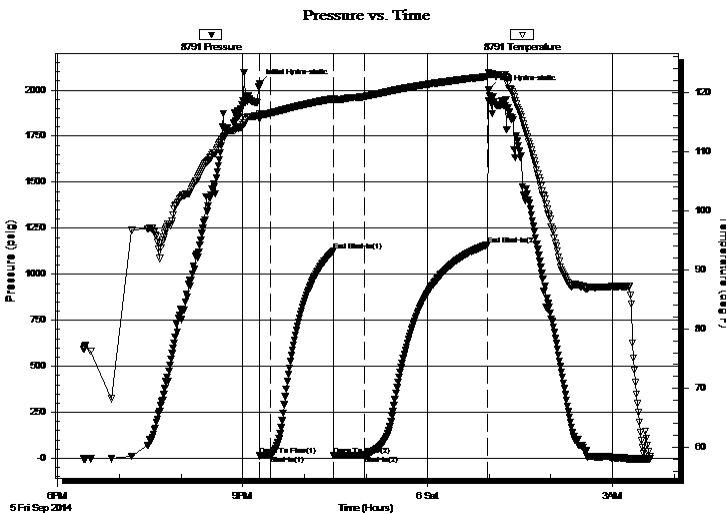
**TEST COMMENT:** 10 - IF: 1/8" Blow at open, built to 1/4"

60 - IS: No blow back

30 - FF: No blow

120 - FS: No blow back

## PRESSURE SUMMARY



Time (Min.)	Pressure (psig)	Temp (deg F)	Annotation
0	2034.70	116.32	Initial Hydro-static
1	14.62	115.58	Open To Flow (1)
11	16.44	116.43	Shut-In(1)
72	1127.59	118.91	End Shut-In(1)
73	17.11	118.56	Open To Flow (2)
102	18.80	119.26	Shut-In(2)
222	1161.08	122.65	End Shut-In(2)
223	2004.18	123.23	Final Hydro-static

## Recovery

Length (ft)	Description	Volume (bbl)
7.00	Mud 100%	0.03

## Gas Rates

Choke (inches)	Pressure (psig)	Gas Rate (Mcf/d)



**TRILOBITE TESTING, INC.**

# DRILL STEM TEST REPORT

Samuel Gary Jr. & Associates

**35/3s/36w Rawlins KS**

1515 Wynkoop STE 700  
Denver, CO 80202

**Fisher Cattle #2-35**

Job Ticket: 60067

**DST#: 1**

ATTN: Chris Mitchell

Test Start: 2014.09.05 @ 18:25:00

## GENERAL INFORMATION:

Formation: **Oread**

Deviated: No Whipstock: ft (KB)

Time Tool Opened: 21:16:45

Time Test Ended: 03:36:15

Test Type: Conventional Bottom Hole (Initial)

Tester: James Winder

Unit No: 57

**Interval: 4042.00 ft (KB) To 4120.00 ft (KB) (TVD)**

Reference Elevations: 3257.00 ft (KB)

Total Depth: 4120.00 ft (KB) (TVD)

3252.00 ft (CF)

Hole Diameter: 7.88 inches Hole Condition: Fair

KB to GR/CF: 5.00 ft

## Serial #: 8320 Fluid

Press @ Run Depth: psig @ 4007.00 ft (KB)

Capacity: 8000.00 psig

Start Date: 2014.09.05

End Date:

2014.09.06

Last Calib.:

2014.09.06

Start Time: 18:25:05

End Time:

03:36:15

Time On Btm:

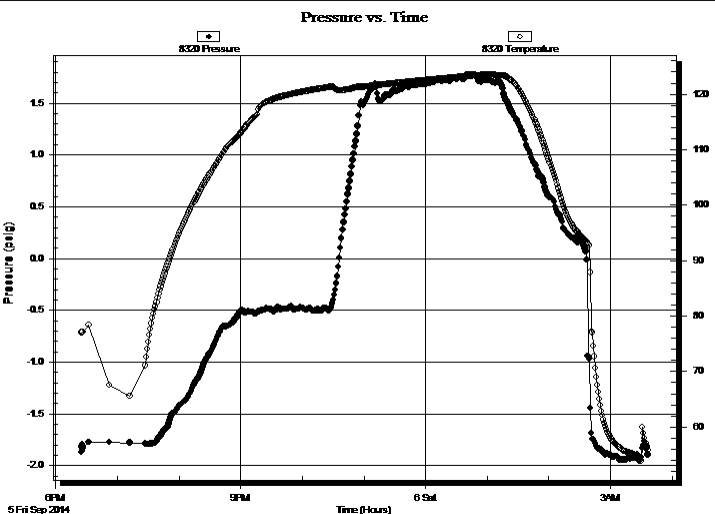
Time Off Btm:

**TEST COMMENT:** 10 - IF: 1/8" Blow at open, built to 1/4"

60 - IS: No blow back

30 - FF: No blow

120 - FS: No blow back



## PRESSURE SUMMARY

Time (Min.)	Pressure (psig)	Temp (deg F)	Annotation

## Recovery

Length (ft)	Description	Volume (bbl)
7.00	Mud 100%	0.03

## Gas Rates

Choke (inches)	Pressure (psig)	Gas Rate (Mcf/d)



**TRILOBITE  
TESTING, INC.**

# DRILL STEM TEST REPORT

**FLUID SUMMARY**

Samuel Gary Jr. & Associates

**35/3s/36w Rawlins KS**

1515 Wynkoop STE 700  
Denver, CO 80202

**Fisher Cattle #2-35**

Job Ticket: 60067

**DST#: 1**

ATTN: Chris Mitchell

Test Start: 2014.09.05 @ 18:25:00

## Mud and Cushion Information

Mud Type: Gel Chem

Cushion Type:

Oil API:

deg API

Mud Weight: 9.00 lb/gal

Cushion Length:

ft

Water Salinity:

ppm

Viscosity: 61.00 sec/qt

Cushion Volume:

bbbl

Water Loss: 9.38 in<sup>3</sup>

Gas Cushion Type:

Resistivity: ohm.m

Gas Cushion Pressure:

psig

Salinity: 1000.00 ppm

Filter Cake: 1.00 inches

## Recovery Information

Recovery Table

Length ft	Description	Volume bbl
7.00	Mud 100%	0.034

Total Length: 7.00 ft      Total Volume: 0.034 bbl

Num Fluid Samples: 0

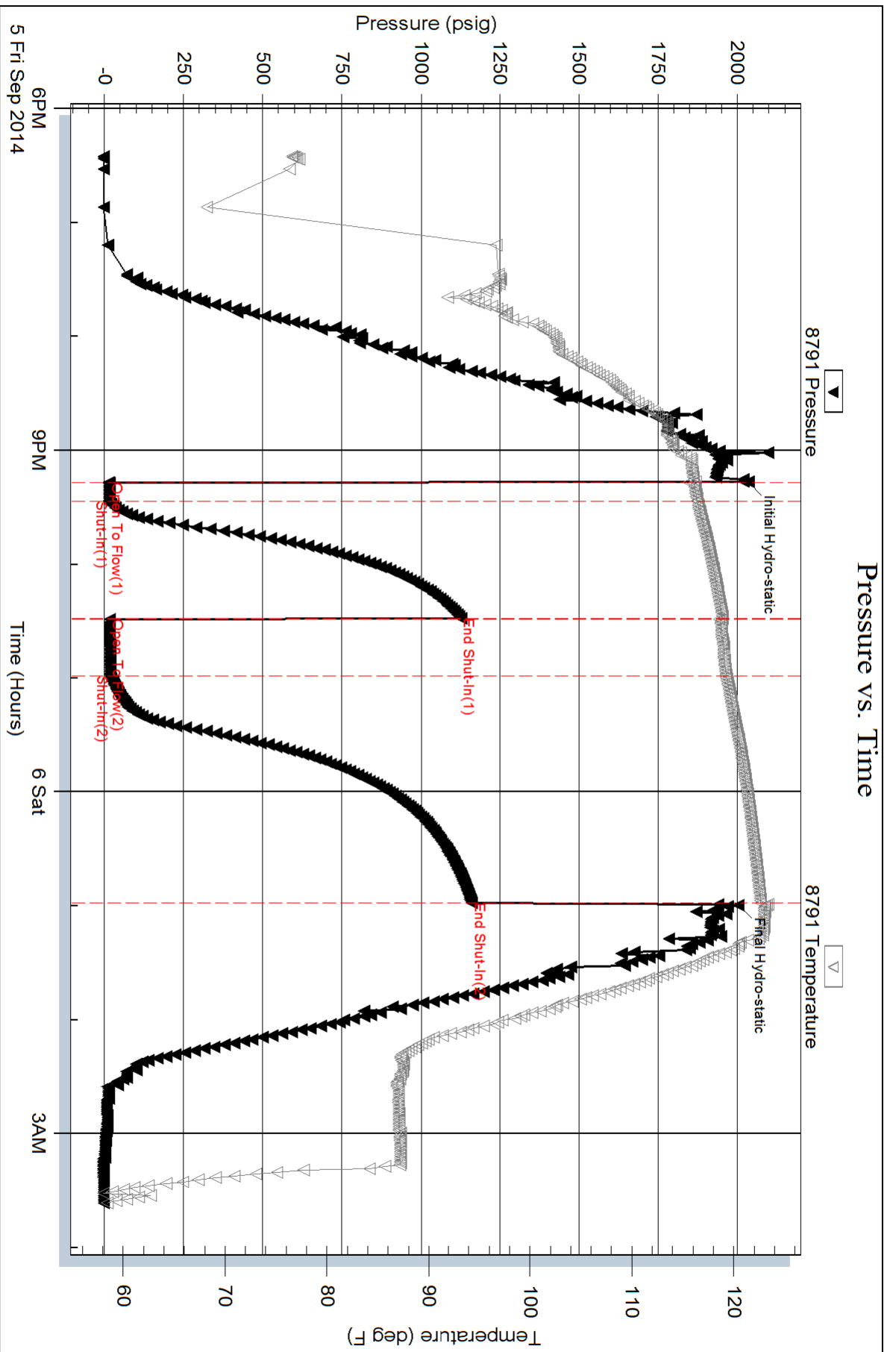
Num Gas Bombs: 0

Serial #:

Laboratory Name:

Laboratory Location:

Recovery Comments: Sampler = 110 PSI, 2300 mL Mud 100%



Serial #: 8320

Fluid

Samuel Gary Jr. & Associates

Fisher Cattle #2-35

DST Test Number: 1

