



**TRILOBITE
TESTING, INC.**

DRILL STEM TEST REPORT

Samuel Gary Jr. & Associates

35/3s/36w Rawlins KS

1515 Wynkoop STE 700
Denver, CO 80202

Fisher Cattle #2-35

Job Ticket: 60070

DST#: 4

ATTN: Chris Mitchell

Test Start: 2014.09.08 @ 05:45:00

GENERAL INFORMATION:

Formation: **LKC "F - G"**

Deviated: No Whipstock: ft (KB)

Time Tool Opened: 08:13:15

Time Test Ended: 15:12:30

Test Type: Conventional Bottom Hole (Reset)

Tester: James Winder

Unit No: 57

Interval: 4236.00 ft (KB) To 4295.00 ft (KB) (TVD)

Reference Elevations: 3257.00 ft (KB)

Total Depth: 4295.00 ft (KB) (TVD)

3252.00 ft (CF)

Hole Diameter: 7.88 inches Hole Condition: Fair

KB to GR/CF: 5.00 ft

Serial #: 8791

Inside

Press@RunDepth: 188.08 psig @ 4237.00 ft (KB)

Capacity: 8000.00 psig

Start Date: 2014.09.08

End Date:

2014.09.08

Last Calib.:

2014.09.08

Start Time:

05:45:05

End Time:

15:12:30

Time On Btm:

2014.09.08 @ 08:13:00

Time Off Btm:

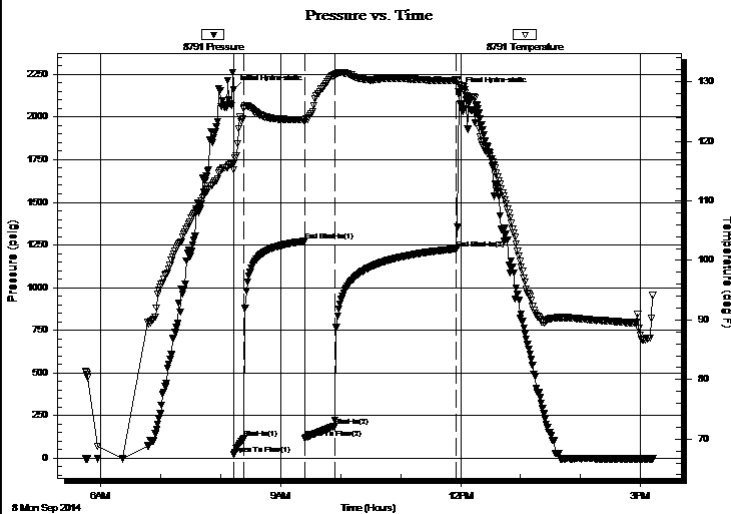
2014.09.08 @ 11:58:00

TEST COMMENT: 10 - IF: Blow built to 7 1/2"

60 - ISI: No blow back

30 - FF: Blow built to BOB (11") in 19 min.

120 - FSI: No blow back



PRESSURE SUMMARY

| Time (Min.) | Pressure (psig) | Temp (deg F) | Annotation |
|-------------|-----------------|--------------|----------------------|
| 0 | 2160.13 | 116.25 | Initial Hydro-static |
| 1 | 21.26 | 115.20 | Open To Flow (1) |
| 11 | 116.88 | 125.61 | Shut-In(1) |
| 71 | 1272.67 | 123.69 | End Shut-In(1) |
| 72 | 119.25 | 123.28 | Open To Flow (2) |
| 102 | 188.08 | 131.21 | Shut-In(2) |
| 223 | 1227.73 | 130.24 | End Shut-In(2) |
| 225 | 2150.17 | 129.54 | Final Hydro-static |

Recovery

| Length (ft) | Description | Volume (bbl) |
|-------------|----------------------------|--------------|
| 191.00 | MCW w/trace oil 78%w, 22%m | 0.98 |
| 125.00 | WCM w/trace oil 71%m, 29%w | 1.75 |
| 60.00 | SOCM 98%m, 2%o | 0.84 |
| | | |
| | | |

Gas Rates

| | Choke (inches) | Pressure (psig) | Gas Rate (Mcf/d) |
|--|----------------|-----------------|------------------|
| | | | |

* Recovery from multiple tests



**TRILOBITE
TESTING, INC**

DRILL STEM TEST REPORT

FLUID SUMMARY

Samuel Gary Jr. & Associates

35/3s/36w Rawlins KS

1515 Wynkoop STE 700
Denver, CO 80202

Fisher Cattle #2-35

Job Ticket: 60070

DST#: 4

ATTN: Chris Mitchell

Test Start: 2014.09.08 @ 05:45:00

Mud and Cushion Information

Mud Type: Gel Chem

Cushion Type:

Oil API:

deg API

Mud Weight: 9.00 lb/gal

Cushion Length:

ft

Water Salinity:

ppm

Viscosity: 49.00 sec/qt

Cushion Volume:

bbbl

Water Loss: 8.79 in³

Gas Cushion Type:

Resistivity: ohm.m

Gas Cushion Pressure:

psig

Salinity: 750.00 ppm

Filter Cake: 1.00 inches

Recovery Information

Recovery Table

| Length ft | Description | Volume bbl |
|--------------|------------------------------|---------------|
| 191.00 | MCW w /trace oil 78%w , 22%m | 0.985 |
| 125.00 | WCM w /trace oil 71%m, 29%w | 1.753 |
| 60.00 | SOCM 98%m, 2%o | 0.842 |

Total Length: 376.00 ft Total Volume: 3.580 bbl

Num Fluid Samples: 0

Num Gas Bombs: 0

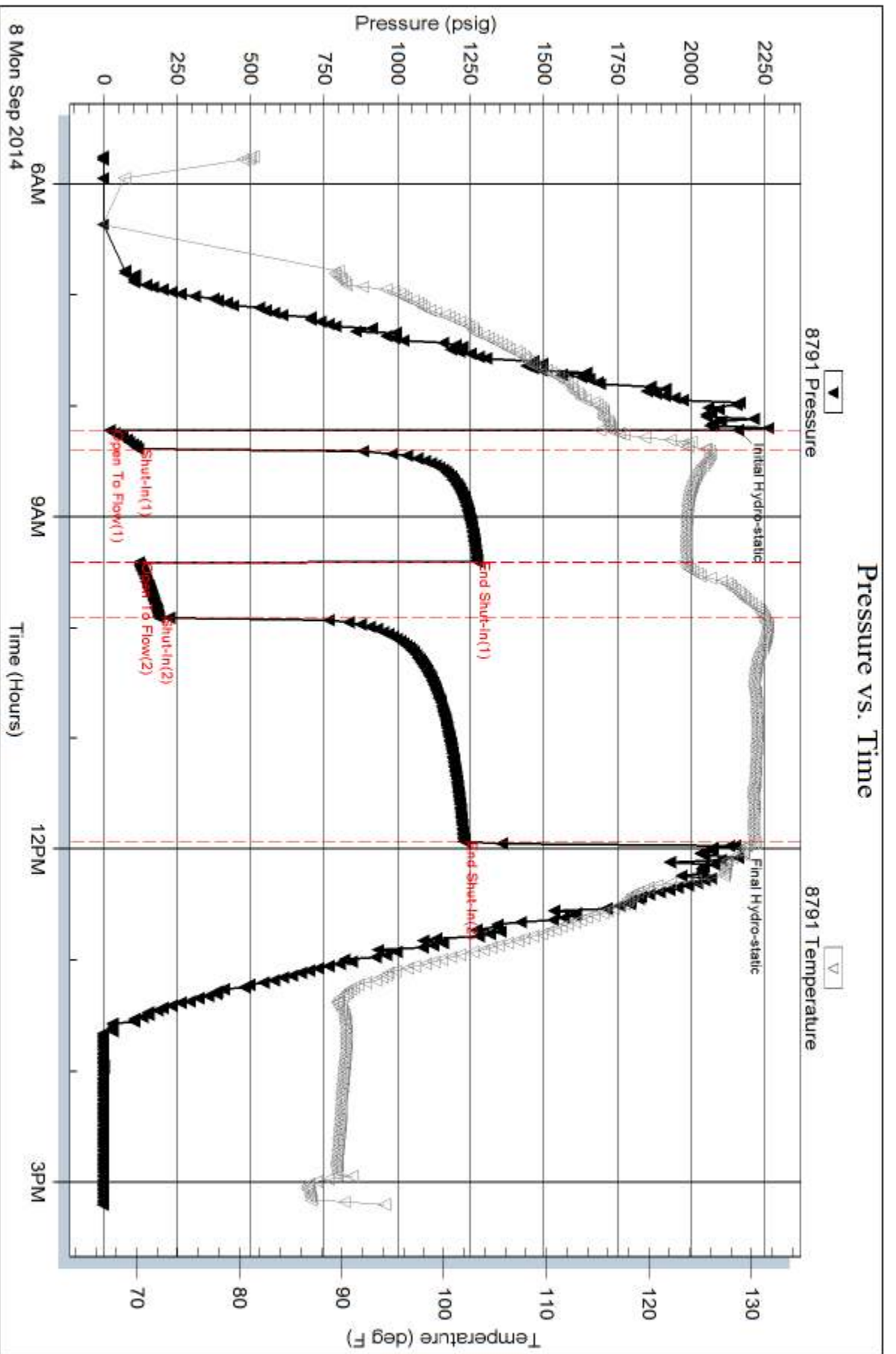
Serial #:

Laboratory Name:

Laboratory Location:

Recovery Comments: RW = .187 @ 99.8 deg F Chlorides = 26,000 ppm

Sampler = 170 PSI, 1300 mL Water 99%w , 1%m, 1200 mL MCW 75%w , 25%m - Both with trace of Oil



Serial #: 8320

Fluid

Samuel Gary Jr. & Associates

Fisher Cattle #2-35

DST Test Number: 4

