



TRILOBITE TESTING, INC.

DRILL STEM TEST REPORT

Samuel Gary Jr. & Associates

35/3s/36w Rawlins KS

1515 Wynkoop STE 700
Denver, CO 80202

Fisher Cattle #2-35

Job Ticket: 60071

DST#: 5

ATTN: Chris Mitchell

Test Start: 2014.09.09 @ 22:00:00

GENERAL INFORMATION:

Formation: **Upper Pawnee**
 Deviated: No Whipstock: ft (KB)
 Time Tool Opened: 00:28:30
 Time Test Ended: 06:45:15
 Interval: **4507.00 ft (KB) To 4570.00 ft (KB) (TVD)**
 Total Depth: 4570.00 ft (KB) (TVD)
 Hole Diameter: 7.88 inches Hole Condition: Fair
 Test Type: Conventional Bottom Hole (Reset)
 Tester: James Winder
 Unit No: 57
 Reference Elevations: 3257.00 ft (KB)
 3252.00 ft (CF)
 KB to GR/CF: 5.00 ft

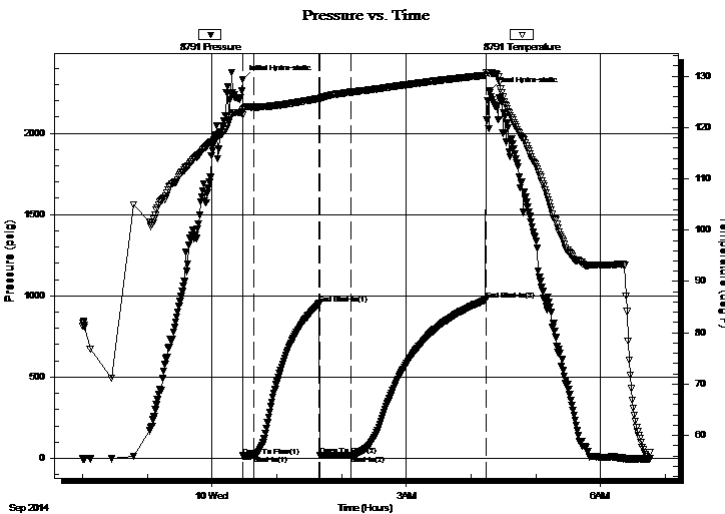
Serial #: 8791

Inside

Press@RunDepth: 19.67 psig @ 4508.00 ft (KB) Capacity: 8000.00 psig
 Start Date: 2014.09.09 End Date: 2014.09.10 Last Calib.: 2014.09.10
 Start Time: 22:00:05 End Time: 06:45:15 Time On Btm: 2014.09.10 @ 00:28:15
 Time Off Btm: 2014.09.10 @ 04:17:00

TEST COMMENT: 10 - IF: Blow built to almost 1/4"
 60 - ISI: No blow back
 30 - FF: No blow
 120 - FSI: No blow back

PRESSURE SUMMARY



Time (Min.)	Pressure (psig)	Temp (deg F)	Annotation
0	2330.18	123.42	Initial Hydro-static
1	15.39	122.41	Open To Flow (1)
10	17.15	123.97	Shut-In(1)
71	952.15	125.66	End Shut-In(1)
72	17.45	125.32	Open To Flow (2)
101	19.67	126.86	Shut-In(2)
226	975.58	130.18	End Shut-In(2)
229	2258.86	130.69	Final Hydro-static

Recovery

Length (ft)	Description	Volume (bbl)
4.00	Mud 100%	0.02

* Recovery from multiple tests

Gas Rates

Choke (inches)	Pressure (psig)	Gas Rate (Mcf/d)



**TRILOBITE
TESTING, INC**

DRILL STEM TEST REPORT

Samuel Gary Jr. & Associates

35/3s/36w Rawlins KS

1515 Wynkoop STE 700
Denver, CO 80202

Fisher Cattle #2-35

Job Ticket: 60071

DST#: 5

ATTN: Chris Mitchell

Test Start: 2014.09.09 @ 22:00:00

GENERAL INFORMATION:

Formation: **Upper Pawnee**

Deviated: No Whipstock: ft (KB)

Time Tool Opened: 00:28:30

Time Test Ended: 06:45:15

Test Type: Conventional Bottom Hole (Reset)

Tester: James Winder

Unit No: 57

Interval: 4507.00 ft (KB) To 4570.00 ft (KB) (TVD)

Reference Elevations: 3257.00 ft (KB)

Total Depth: 4570.00 ft (KB) (TVD)

3252.00 ft (CF)

Hole Diameter: 7.88 inches Hole Condition: Fair

KB to GR/CF: 5.00 ft

Serial #: 8320 Fluid

Press@RunDepth: psig @ 4472.00 ft (KB)

Capacity: 8000.00 psig

Start Date: 2014.09.09

End Date:

2014.09.10

Last Calib.:

2014.09.10

Start Time: 22:00:05

End Time:

06:46:15

Time On Btm:

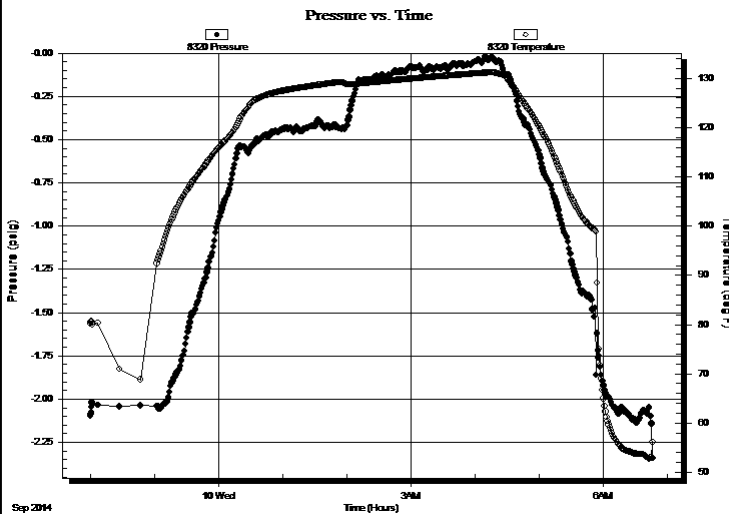
Time Off Btm:

TEST COMMENT: 10 - IF: Blow built to almost 1/4"

60 - ISI: No blow back

30 - FF: No blow

120 - FSI: No blow back



PRESSURE SUMMARY

Time (Min.)	Pressure (psig)	Temp (deg F)	Annotation

Recovery

Length (ft)	Description	Volume (bbl)
4.00	Mud 100%	0.02

Gas Rates

	Choke (inches)	Pressure (psig)	Gas Rate (Mcf/d)

* Recovery from multiple tests



**TRILOBITE
TESTING, INC**

DRILL STEM TEST REPORT

FLUID SUMMARY

Samuel Gary Jr. & Associates

35/3s/36w Rawlins KS

1515 Wynkoop STE 700
Denver, CO 80202

Fisher Cattle #2-35

Job Ticket: 60071

DST#: 5

ATTN: Chris Mitchell

Test Start: 2014.09.09 @ 22:00:00

Mud and Cushion Information

Mud Type: Gel Chem

Cushion Type:

Oil API:

deg API

Mud Weight: 9.00 lb/gal

Cushion Length:

ft

Water Salinity:

ppm

Viscosity: 66.00 sec/qt

Cushion Volume:

bbbl

Water Loss: 8.79 in³

Gas Cushion Type:

Resistivity: ohm.m

Gas Cushion Pressure:

psig

Salinity: 750.00 ppm

Filter Cake: 1.00 inches

Recovery Information

Recovery Table

Length ft	Description	Volume bbl
4.00	Mud 100%	0.020

Total Length: 4.00 ft Total Volume: 0.020 bbl

Num Fluid Samples: 0

Num Gas Bombs: 0

Serial #:

Laboratory Name:

Laboratory Location:

Recovery Comments: Sampler = 100 PSI, 2400 mL Mud 100%

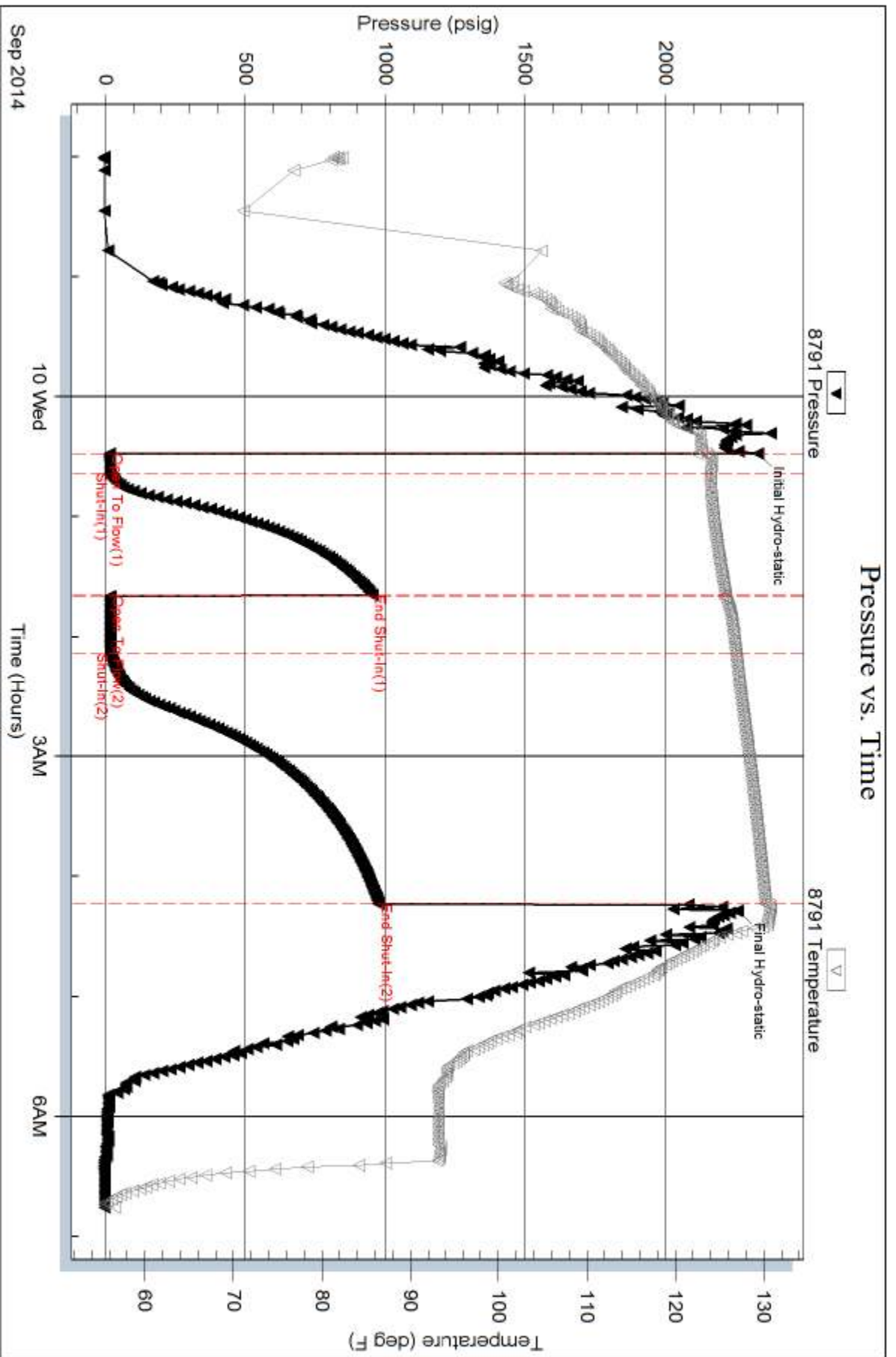
Serial #: 8791

Inside

Samuel Gary Jr. & Associates

Fisher Cattle #2-35

DST Test Number: 5



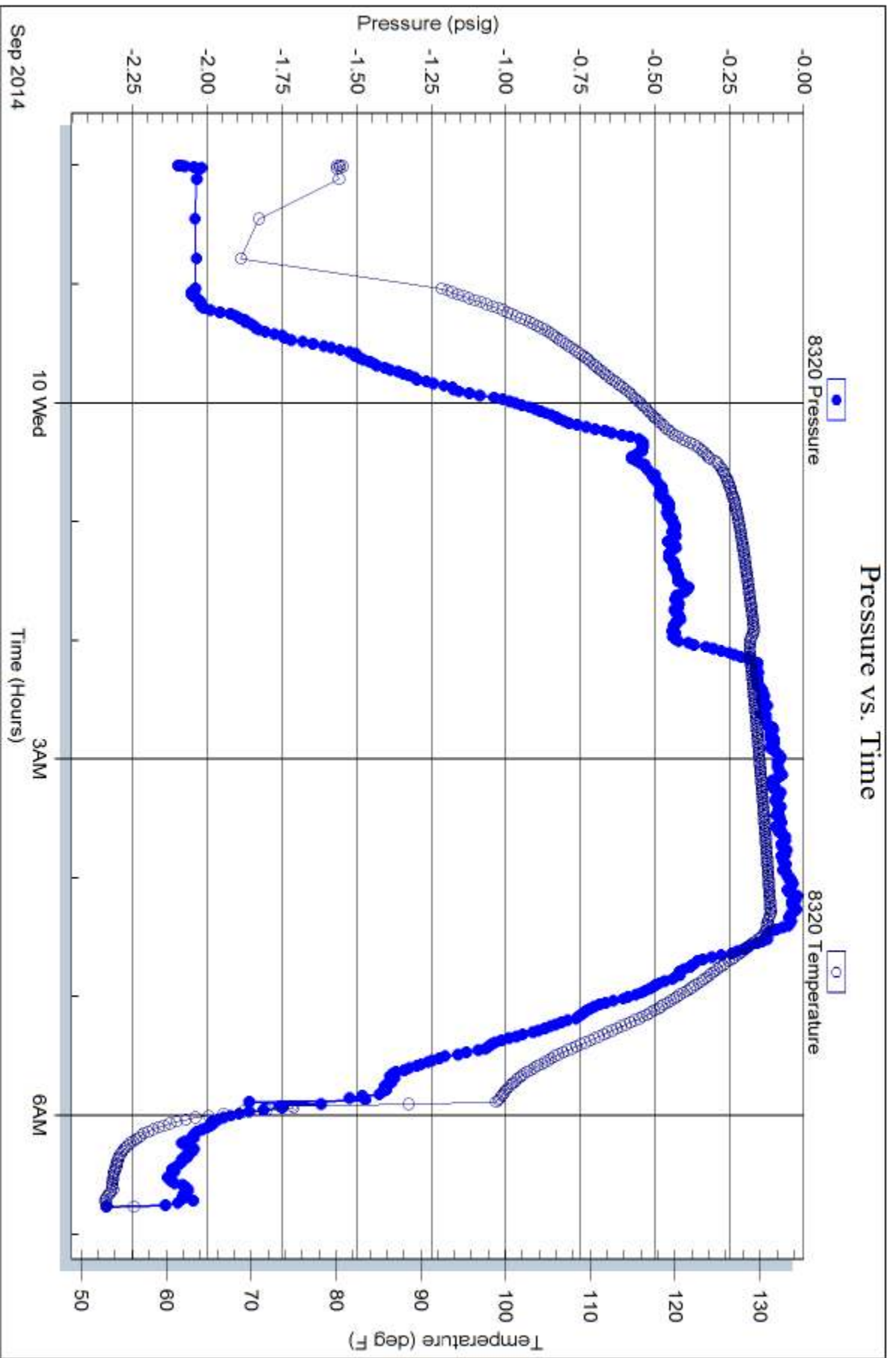
Serial #: 8320

Fluid

Samuel Gary Jr. & Associates

Fisher Cattle #2-35

DST Test Number: 5



Trilobite Testing, Inc

Ref. No: 60071

Printed: 2014.09.10 @ 07:57:24