



**TRILOBITE  
TESTING, INC.**

# DRILL STEM TEST REPORT

Berexco LLC.  
2020 N. Bramblewood  
Wichita KS 67206  
ATTN: Pete Vollmer

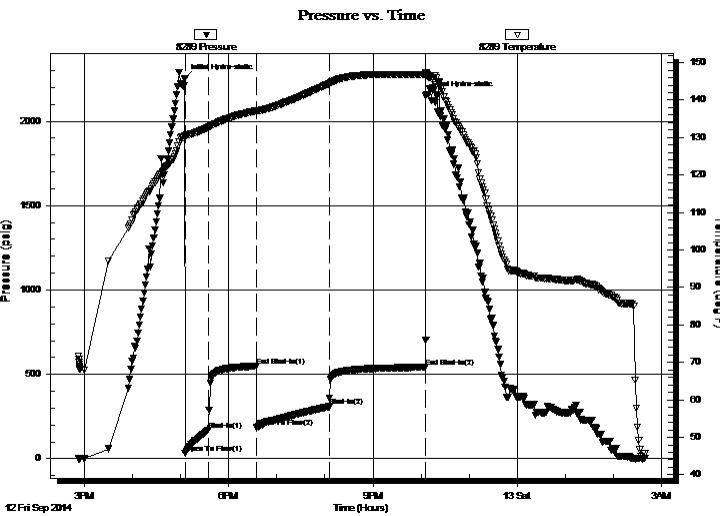
**15-1S-37W Cheyenne KS**  
**Mears E #1-15**  
Job Ticket: 56138      **DST#: 3**  
Test Start: 2014.09.12 @ 14:53:00

## GENERAL INFORMATION:

Formation: **Pawnee**  
Deviated: No Whipstock: ft (KB)  
Time Tool Opened: 17:05:45  
Time Test Ended: 02:40:00  
Interval: **4468.00 ft (KB) To 4508.00 ft (KB) (TVD)**  
Total Depth: 4508.00 ft (KB) (TVD)  
Hole Diameter: 7.88 inches Hole Condition: Fair  
Reference Elevations: 3156.00 ft (KB)  
3143.00 ft (CF)  
KB to GR/CF: 13.00 ft  
Test Type: Conventional Bottom Hole (Reset)  
Tester: Jim Svaty  
Unit No: 76

**Serial #: 8289      Outside**  
Press @ Run Depth: 308.52 psig @ 4473.00 ft (KB)      Capacity: 8000.00 psig  
Start Date: 2014.09.12      End Date: 2014.09.13      Last Calib.: 2014.09.13  
Start Time: 14:53:02      End Time: 02:39:45      Time On Btm: 2014.09.12 @ 17:05:30  
Time Off Btm: 2014.09.12 @ 22:06:00

**TEST COMMENT:** 30-IFP- BOB in 16min.  
60-ISIP- Surface Blow Building to 1/2in. in 5min. Died Back in 9min.  
90-FFP- BOB in 24min.  
120-FSIP- 1 1/4in. Blow in 6min. Died Back in 11min.



## PRESSURE SUMMARY

Time (Min.)	Pressure (psig)	Temp (deg F)	Annotation
0	2251.84	130.51	Initial Hydro-static
1	30.63	130.02	Open To Flow (1)
30	168.42	132.71	Shut-In(1)
90	548.45	137.13	End Shut-In(1)
90	185.48	137.01	Open To Flow (2)
180	308.52	144.39	Shut-In(2)
300	542.11	146.86	End Shut-In(2)
301	2150.63	147.39	Final Hydro-static

## Recovery

Length (ft)	Description	Volume (bbl)
730.00	CO 100%	5.42
0.00	1372 GIP	0.00

\* Recovery from multiple tests

## Gas Rates

Choke (inches)	Pressure (psig)	Gas Rate (Mcf/d)



**TRILOBITE  
TESTING, INC.**

# DRILL STEM TEST REPORT

**FLUID SUMMARY**

Berexco LLC.

**15-1S-37W Cheyenne KS**

2020 N. Bramblewood  
Wichita KS 67206

**Mears E #1-15**

Job Ticket: 56138

**DST#: 3**

ATTN: Pete Vollmer

Test Start: 2014.09.12 @ 14:53:00

## Mud and Cushion Information

Mud Type: Gel Chem

Cushion Type:

Oil API:

35 deg API

Mud Weight: 9.00 lb/gal

Cushion Length:

ft

Water Salinity:

ppm

Viscosity: 56.00 sec/qt

Cushion Volume:

bbbl

Water Loss: 5.99 in<sup>3</sup>

Gas Cushion Type:

Resistivity: ohm.m

Gas Cushion Pressure:

psig

Salinity: 600.00 ppm

Filter Cake: 3.00 inches

## Recovery Information

Recovery Table

Length ft	Description	Volume bbl
730.00	CO 100%	5.421
0.00	1372 GIP	0.000

Total Length: 730.00 ft      Total Volume: 5.421 bbl

Num Fluid Samples: 0

Num Gas Bombs: 0

Serial #:

Laboratory Name:

Laboratory Location:

Recovery Comments:

