



Woolsey Operating Company, LLC

Scale 1:240 (5"=100') Imperial
Measured Depth Log

Well Name: TUCKER 'B' GU #6
Location: Section 11 - Township 34 South - Range 11 West
License Number: 15-007-24214-00-00 Region: Barber County, Kansas
Spud Date: August 21, 2014 Drilling Completed: August 30, 2014
Surface Coordinates: 1980' FNL and 1980' FEL
C SW 1/4 NE 1/4

Bottom Hole
Coordinates:
Ground Elevation (ft): 1392' K.B. Elevation (ft): 1404'
Logged Interval (ft): 4000' To: 5120' Total Depth (ft): 5120'
Formation: Kansas City ----> Simpson Group
Type of Drilling Fluid: Chemical Mud

Printed by MUD.LOG from WellSight Systems 1-800-447-1534 www.WellSight.com

OPERATOR

Company: Woolsey Operating Company, LLC
Address: 125 N. Market, Suite 1000
Wichita, KS 67202

GEOLOGIST

Name: Bill Klaver
Company: Woolsey Operating Co. LLC
Address: 125 N. Market, Wichita Kansas, 67202

COMMENTS

Surface Casing: Spud at 2:15 pm on August 21, 2104, ran 5 joints of new 13 3/8" X 48#/ft surface casing to 229' KB (tally 214.35'). Cemented by Quality WS with 300 sx Class A-2, 2% gel, 3% cc. Plug down at 9:45 pm on August 21, 2014. Cement did circulate.

Production Casing: 5 1/2" X 16.5#/ft

Deviation Surveys: 1 at 229', 1 at 982', 1/2 at 1491', 1/2 at 1996', 1/2 at 2504', 1 at 3013', 1/2 at 3515', 1 at 4020', 1/2 at 4625', 3/4 at 5120'

Pipe Strap @ 4256', Strap: 4655.29', Board: 4656.04', Strap .75' short to the board. No corrections were made to the board.

Fossil Drilling Rig 3 Bit Record:

- 1) 17 1/2" Smith RR, in at 0' out at 229'. 4 3/4 hours.
- 2) 7 7/8" Varel HE-21, in at 229' out at 4625', 91 hours.
- 3) 7 7/8" Varel HE-29 RR in at 4625' out at 5120', 32 3/4 hours

Gas Detector: Woolsey Operating Company, Gas Shack #2

Mud System: Mud-Co. Brad Bortz, Engineer

DSTs: Trilobite Testing, Gary Pevoteaux, Tester

Company Man: Mike Tharp, Woolsey Operating Company

E-Logs: Nabors Completion and Production Services, Dual Induction Laterolog w/SP, CNL/FDC w/PE, Gamma Ray and Caliper. Jeff Groneweg, Engineer

DSTs

DST #1 Mississippian, 4510'-4625', 30"-60"-60"-120", Weak 4" blow on initial flow. Weak 6" blow throughout final flow period. Recovered: 165' GIP, 40' GCM (7% Gas, 93% Mud w/oil specks), IHP 2250, IFP 24-33, ISIP 157, FFP 33-44, FSIP 183, FHP 2117. BHT 124 degrees.

CREWS

Jim Wenrich, Tool Pusher (surface time and moving)

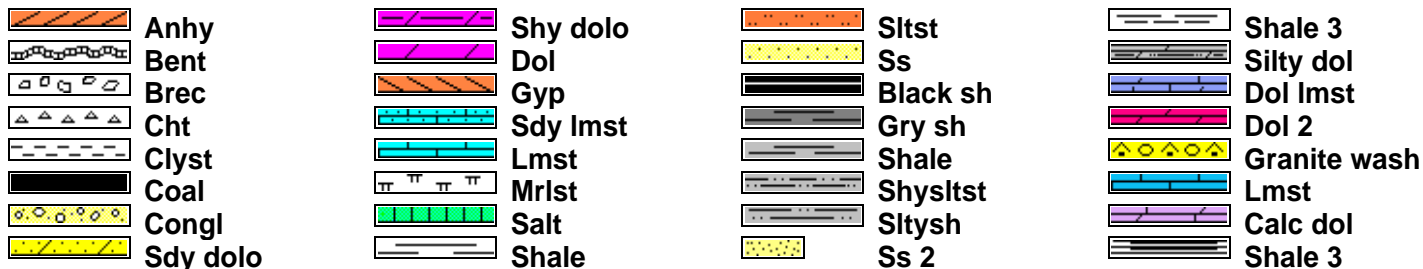
Daniel Orrantia, Daylights

Ron Burns, Evening

Kirk Shuman, Morning

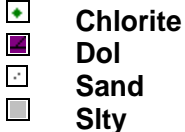
Chris Slatts, Relief

ROCK TYPES

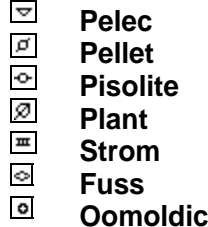
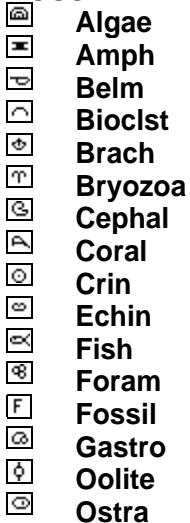


ACCESSORIES

MINERAL



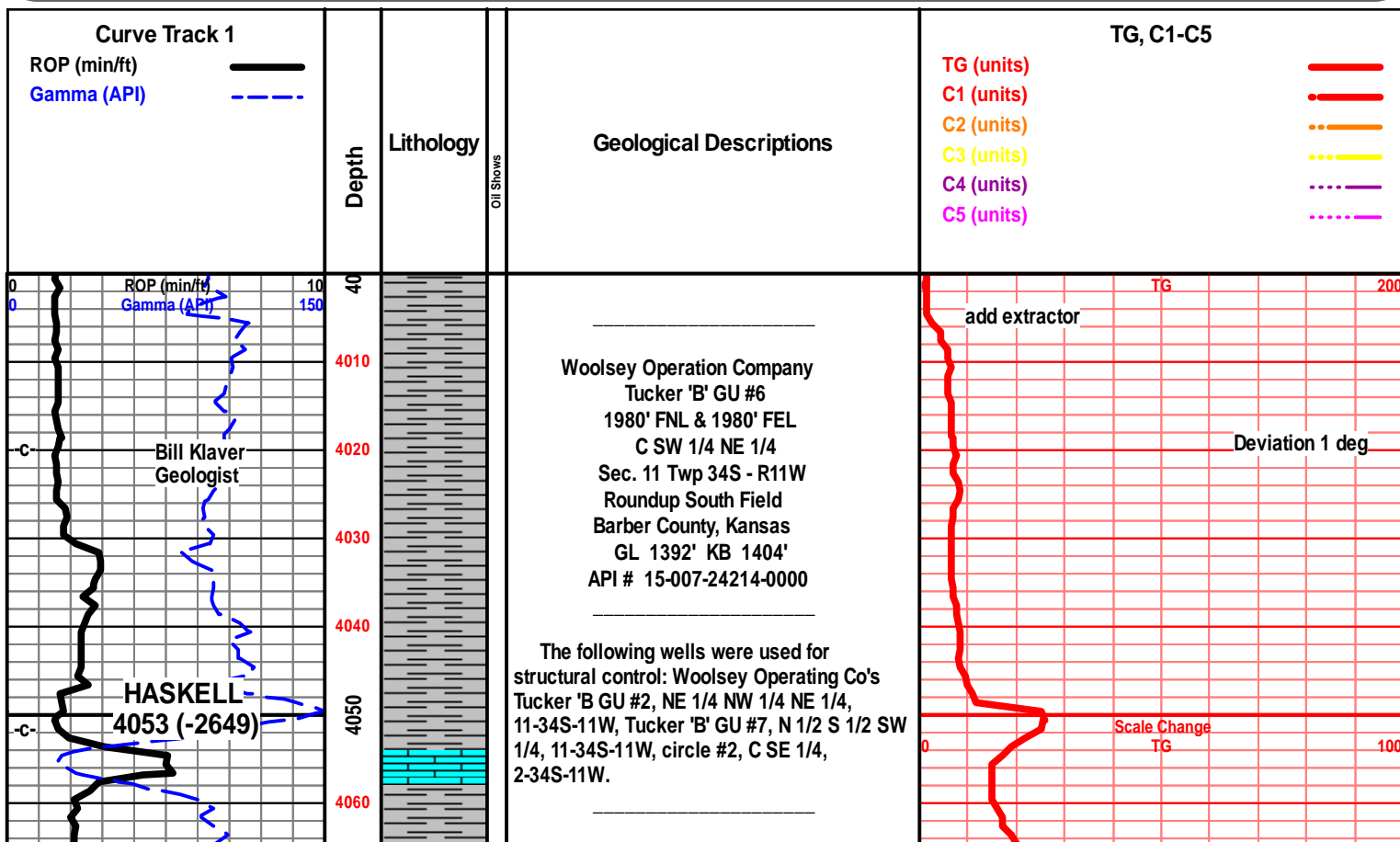
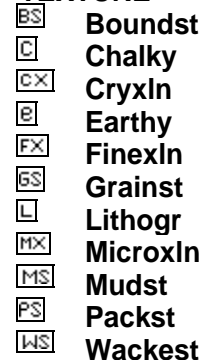
FOSSIL



STRINGER



TEXTURE



One minute drill time was recorded from 4000' to rotary total depth. 10 foot and circulating sample were gathered and delivered to the Survey at the completion of the test.

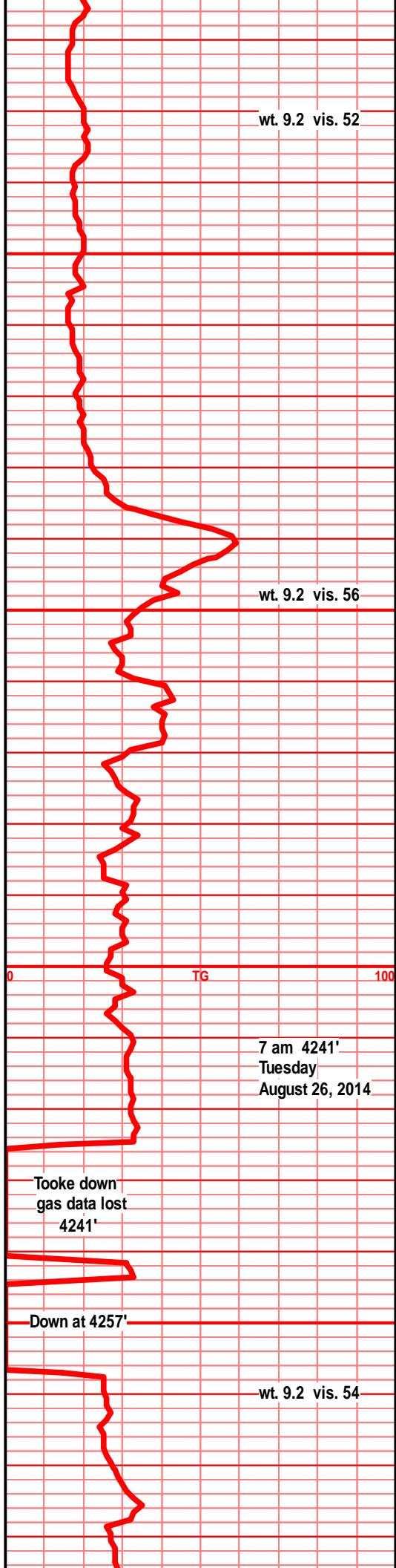
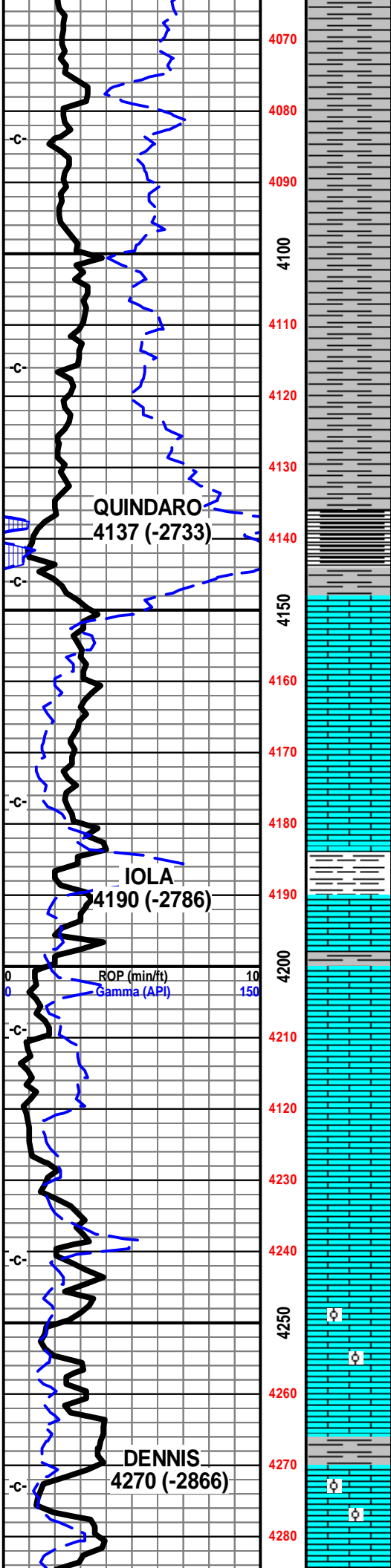
7am Daily Progress:

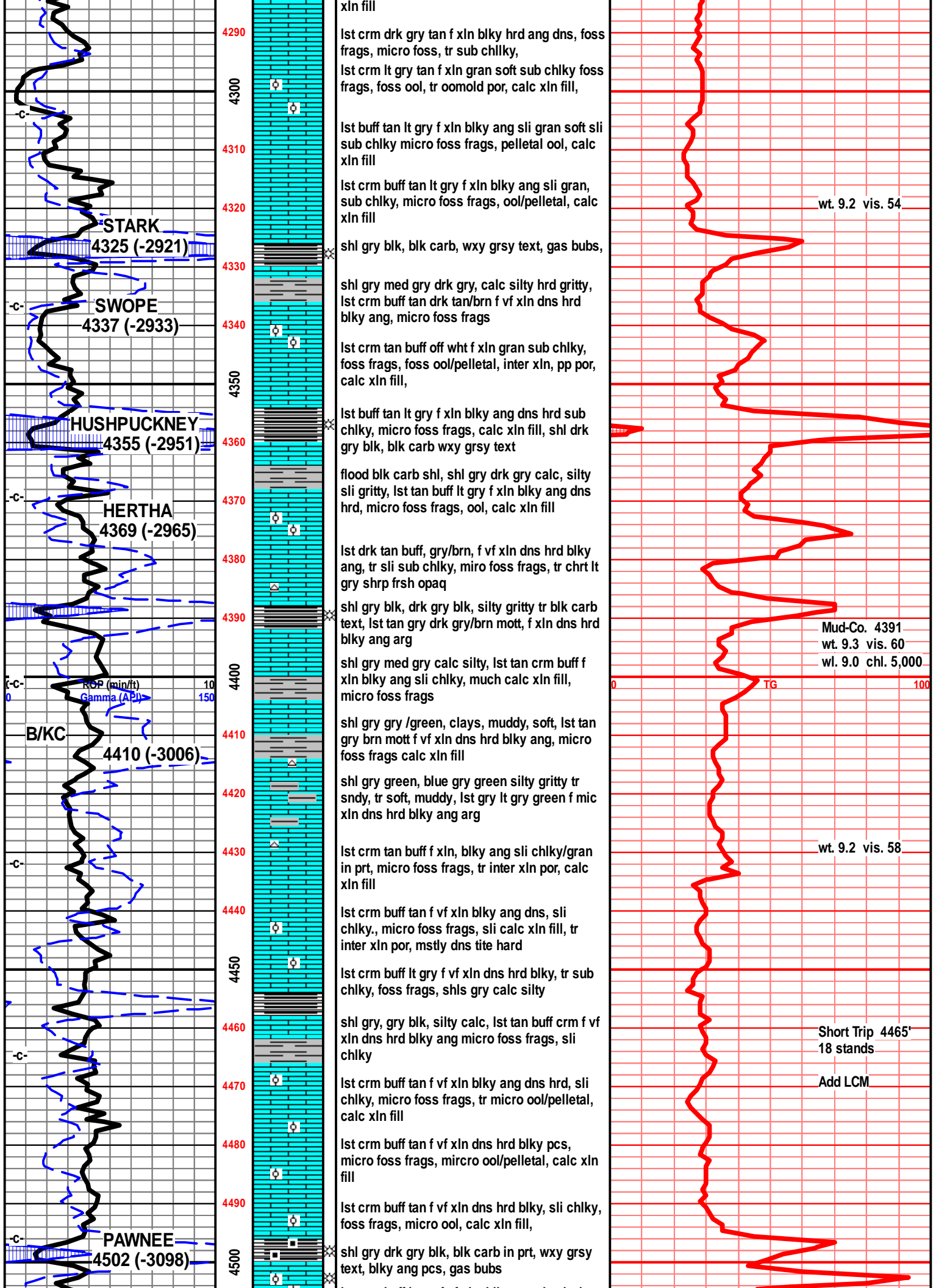
- August 21, 2014 MIRT/SPUD
- August 22, 2014 Drilling at 320'
- August 23, 2014 Drilling at 1745'
- August 24, 2014 Drilling at 2788'
- August 25, 2014 Drilling at 3635'
- August 26, 2014 Drilling at 4241'
- August 27, 2014 Drilling at 4569'
- August 28, 2014 Drilling at 4650'
- August 29, 2014 Drilling at 4982'
- August 30, 2014 E-logs out 7 am

E-Log Tops:

- Herington 1781 (-377)
- Onaga 2617 (-1213)
- Wabaunsee 2668 (-1264)
- Stotler 2800 (-1396)
- Topeka 3086 (-1682)
- LeCompton 3436 (-2032)
- Kanwaka 3449 (-2045)
- Elgin Sand 3502 (-2098)
- Heebner 3646 (-2242)
- Toronto 3656 (-2252)
- Douglas Grp 3684 (-2280)
- Douglas Shale 3704 (-2300)
- Haskell (Brown) Lime 4058 (-2654)
- Quindaro 4140 (-2736)
- Iola 4194 (-2790)
- Drum 4245 (-2841)
- Dennis 4299 (-2895)
- Stark 4327 (-2923)
- Swope 4340 (-2936)
- Hushpuckney 4358 (-2954)
- Hertha 4366 (-2962)
- B/Kansas City 4410 (-3006)
- Pawnee 4506 (-3102)
- Cherokee Grp 4552 (-3148)
- Mississippi Unc. 4581 (-3177)
- C3 4581 (-3177)
- C2A 4599 (-3195)
- C2 4635 (-3231)
- Compton 4763 (-3359)
- Kinderhook 4776 (-3372)
- Woodford 4859 (-3455)
- Viola 4907 (-3503)
- Simpson Grp 5000 (-3596)
- Wilcox 5016 (-3612)
- McLish 5084 (-3680)
- LTD 5124 (-3720)

1st crm off wht tan f xln gran sub chlky soft, foss frags, foss ool/pelletal, inter xln por, calc





4290
4300
4310
4320
4330
4340
4350
4360
4370
4380
4390
4400
4410
4420
4430
4440
4450
4460
4470
4480
4490
4500

lst crm drk gry tan f xln blk hrd ang dns, foss frags, micro foss, tr sub chlky,
lst crm lt gry tan f xln gran soft sub chlky foss frags, foss ool, tr oomold por, calc xln fill,
lst buff tan lt gry f xln blk ang sli gran soft sli sub chlky micro foss frags, pelletal ool, calc xln fill
lst crm buff tan lt gry f xln blk ang sli gran, sub chlky, micro foss frags, ool/pelletal, calc xln fill
shl gry blk, blk carb, wxy grsy text, gas bubs,
shl gry med gry drk gry, calc silty hrd gritty, lst crm buff tan drk tan/brn f vf xln dns hrd blk ang, micro foss frags
lst crm tan buff off wht f xln gran sub chlky, foss frags, foss ool/pelletal, inter xln, pp por, calc xln fill,
lst buff tan lt gry f xln blk ang dns hrd sub chlky, micro foss frags, calc xln fill, shl drk gry blk, blk carb wxy grsy text
flood blk carb shl, shl gry drk gry calc, silty sli gritty, lst tan buff lt gry f xln blk ang dns hrd, micro foss frags, ool, calc xln fill
lst drk tan buff, gry/brn, f vf xln dns hrd blk ang, tr sli sub chlky, miro foss frags, tr chrt lt gry shrp frsh opa
shl gry blk, drk gry blk, silty gritty tr blk carb text, lst tan gry drk gry/brn mott, f xln dns hrd blk ang arg
shl gry med gry calc silty, lst tan crm buff f xln blk ang sli chlky, much calc xln fill, micro foss frags
shl gry gry /green, clays, muddy, soft, lst tan gry brn mott f vf xln dns hrd blk ang, micro foss frags calc xln fill
shl gry green, blue gry green silty gritty tr sndy, tr soft, muddy, lst gry lt gry green f mic xln dns hrd blk ang arg
lst crm tan buff f xln, blk ang sli chlky/gran in prt, micro foss frags, tr inter xln por, calc xln fill
lst crm buff tan f vf xln blk ang dns, sli chlky., micro foss frags, sli calc xln fill, tr inter xln por, mstly dns tite hard
lst crm buff lt gry f vf xln dns hrd blk, tr sub chlky, foss frags, shls gry calc silty
shl gry, gry blk, silty calc, lst tan buff crm f vf xln dns hrd blk ang micro foss frags, sli chlky
lst crm buff tan f vf xln blk ang dns hrd, sli chlky, micro foss frags, tr micro ool/pelletal, calc xln fill
lst crm buff tan f vf xln dns hrd blk pcs, micro foss frags, micro ool/pelletal, calc xln fill
lst crm buff tan f vf xln dns hrd blk, sli chlky, foss frags, micro ool, calc xln fill,
shl gry drk gry blk, blk carb in prt, wxy grsy text, blk ang pcs, gas bubs

wt. 9.2 vis. 54

Mud-Co. 4391
wt. 9.3 vis. 60
wl. 9.0 chl. 5,000

wt. 9.2 vis. 58

Short Trip 4465'
18 stands

Add LCM

STARK
4325 (-2921)

SWOPE
4337 (-2933)

HUSHPUCKNEY
4355 (-2951)

HERTHA
4369 (-2965)

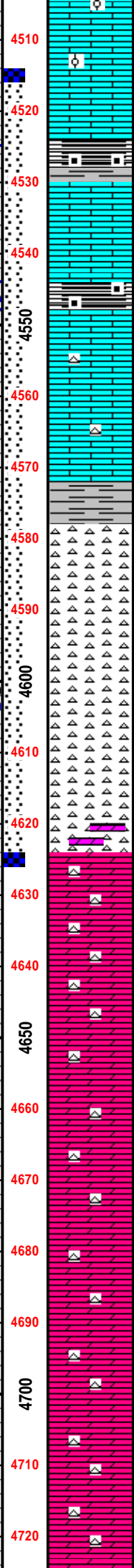
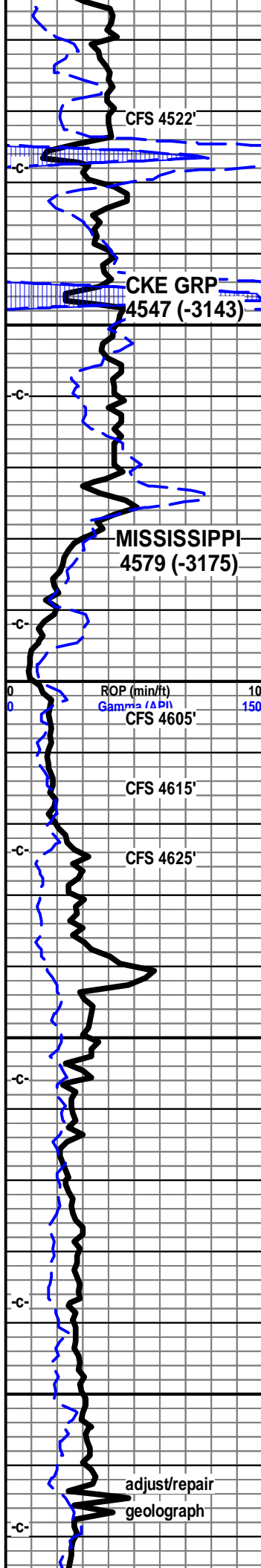
B/KC
4410 (-3006)

PAWNEE
4502 (-3098)

ROP (min/ft)
Gamma (API)

TG

100



lst crm buff lt tan f vf xln, blk ang dns hrd pcs, sli chlky in prt, micro foss frags, crsly ool in prt, packed ool, hvy calc xln fill NVP, mstly dns tite, gas bubs on brk, fair/bright UV (mineral?)

lst crm buff tan f vf xln dns hrd blkly, sli sub chlky in prt, tr foss frags, micro foss frags, ool, tr pelletal, calc xln fill

shl gry blk, drk gry blk carb in prt wxy grsy text, blkly ang pcs, gas bubs, lst tan crm buff, tr lt tan/gry f vf xln dns hrd blkly, tr sli chlky, foss frags, micro foss frags, tr micro ool/pelletal,

shl gry drk gry blk, blk carb, wxy grsy text, blkly ang pcs, filmy cond sho, gas bubs, lst tan buff f vf xln dns hrd blkly ang sli chlky, micro foss frags, tr calc xln fill

lst tan buff crm, tan/lt gry f vf xln dns hrd, blkly ang pcs, sli chlky gran text, tr arg text, micro foss frags, calc xln fill

lst crm buff lt gry f vf xln dns blkly ang hrd, sli chlky, micro foss frags, calc xln fill, chrt lt gry tan shrp frsh

chrt wht, lt tan, lt gry, off wht, shrp frsh shrp blkly sub opa, tan brn stained vry sli weath edge, tr pp por, frac por, odor, stain, gas bubs

chrt aa, chrt off wht tan brn mott, weath sli trip text edge, spongy soft weath edge, pp moldic por, chrt wht lt gry tr tan shrp frsh sub opa with weath sli trip spongy text edge, pp moldic por, vug por, stain, SSFO, gas bubs gd odor

chrt lt blue/grey mott shrp frsh, sub opa with tan brn mott weath text edges, w/trip sli spongy text, gd pp mold/vug por, gas bubs, SFO, gd odor, stain

chrt aa, dolo crm tan lt gry f vf xln gran sli suc text, tr glau, inter xln por, stain vssfo, w/gry/blue gry chrt inclu w/weath edges, stain, ssfo, gas, odor

dolo, chrty dolo, crm tan f vf xln gran, blkly ang pcs, sli slic text, sli suc text, tr glau, chrt inclu, gry smokey, shrp frsh opa, tr weath edge, stain, ssfo, odor, gas bubs

dolo crm tan, lt gry/brn f vf xln gran sli suc text, fnly inter xln text, tr glau, tan brn stain, ssfo/gas on brk, chrty in prt, chrt off wht lt gry shrp frsh, tr weath, tan brn stained edges

dolo crm tan tr lt brn f vf xln gran silic, sli suc text, tr glau, sli inter xln por, mstly dns tite, chrty in prt, chrt gry opa shrp frsh, tr stain, tr gas sli odor

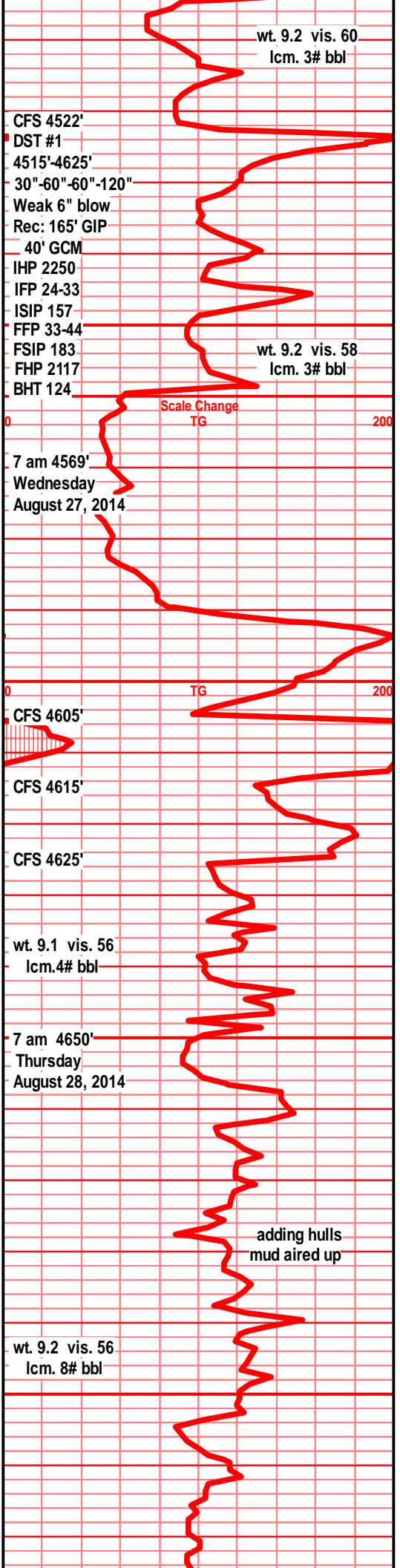
dolo crm tan lt gry f vf xln blkly ang gran dns hrd, sli suc text, silic in prt, inter xln por, mstly dns tite, chrty, chrt wht lt gry shrp frsh opa, tr stain

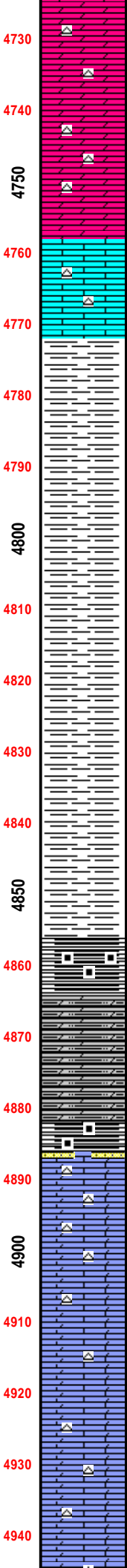
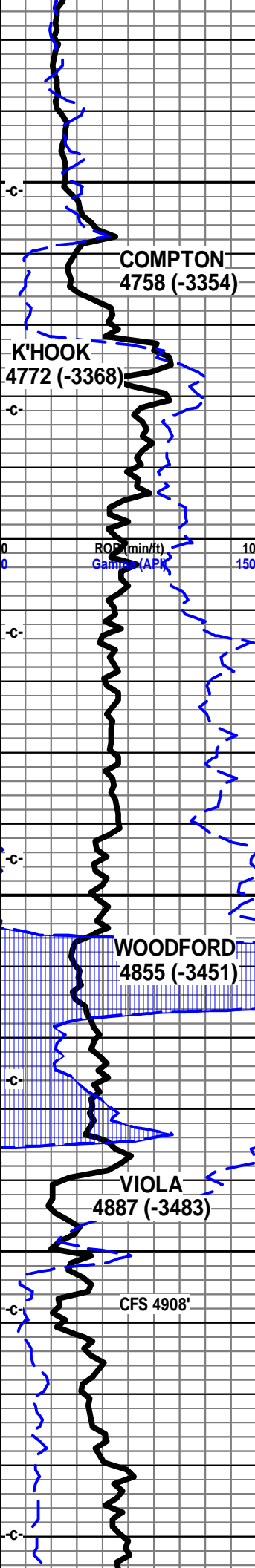
dolo crm tan lt gry, gry/drk tan f vf xln gran blkly ang dns tite, tr inter xln por, chrty, chrt wht lt gry shrp frsh, dec shows

dolo drk crm tan, bec drkr tan/gry f vf xln dns hrd incr arg, silty, gritty, silic, chrt dull gry shrp frsh opa

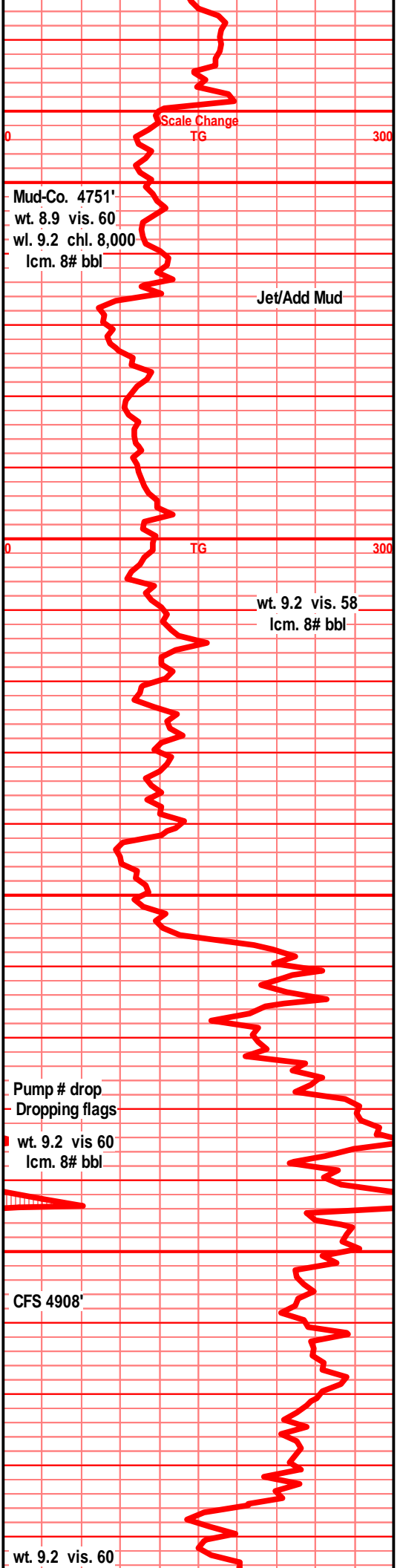
dolo, silty dolo in prt, tan drk tan gry, f vf xln gran silic text, silty, chrty in prt, chrt dull tan gry blue shrp frsh sub opa

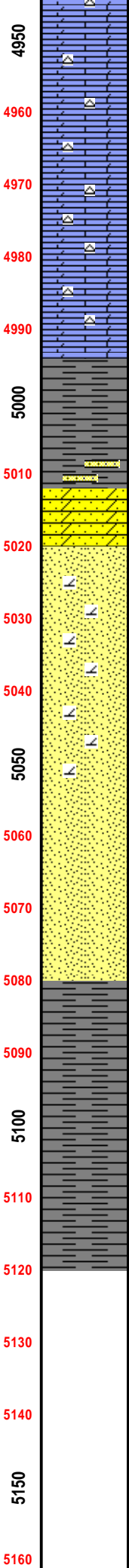
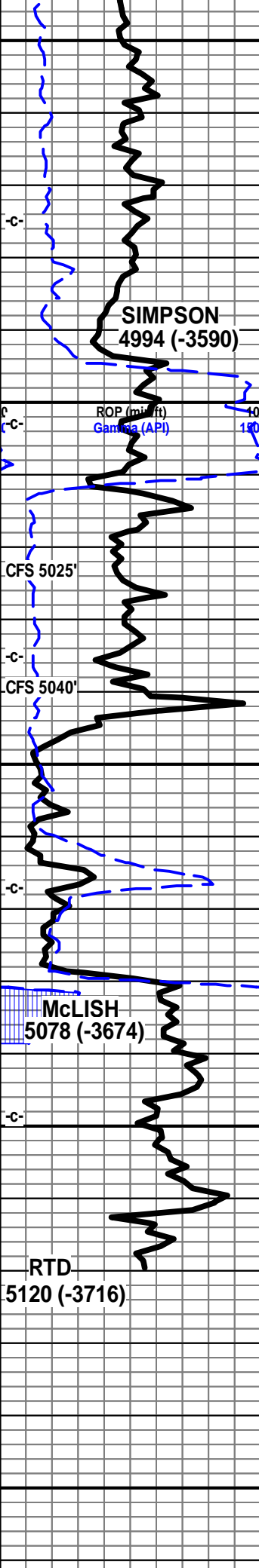
dolo tan gry f vf xln, silty in prt, gran silic text,





arg, chrt, chrt dull gry smokey shrp frsh opa
 opa
 dolo tan drk tan gry f vf xln gran sili, sli sucr
 text, blk ang pcs, arg silty in prt, chrt, chrt
 dull tan lt gry shrp frsh sub opa
 dolo, silty dolo in prt, tan drk tan gry, f vf xln
 dns hrd blk ang pcs, arg silty, silic text,
 chrt, chrt tan gry smokey shrp frsh sub opa
 dolo silty dolo, tan gry, drk gry, f vf lxn gran
 silic text, arg silty in prt, chrt aa
 1st wht off wht, dull lt tan f med xln blk ang
 pcs, tr crs xln, tr crs foss frags, chrt wht shrp
 frsh blk ang pcs, sub opa
 shl gry, drk gry blk, silty, fnly gritty, tr pyritic
 shl drk gry blk, silty, fnly gran, gritty. tr
 bedded, pyritic, tr gas on brk
 shl drk gry/blk, brnsh blk, silty, platey,
 splintery in prt, gas bubs
 shl gry, drk gry/blk, reddish brn tint, sli silty,
 spinters, gas bubs, tr pyritic
 shl dry gry blk, brnsh/reddish blk, silty, sli
 gritty, pyritic, gas bubs on brk
 shl gry drk gry blk, reddish brn tint, splintery,
 pyritic in prt, ratty, gas bubs aa
 shl dkr gry, gry/blk, reddish brn in prt, fnly
 silty, sli gritty, spinters, gas bubs
 shl gry dkr gry blk, brn/red tint blk, silty fnly
 gran splintery gas bubs
 shl blk, reddish blk, carb, grsy wxy pcs, blk
 ang pyritic silty dolo sli silic text, gritty gran
 text, abun gas bubs
 shl, dolo shl, drk gry, gry blk, silty silic, gritty,
 pyritic
 shl, dolo shl, drk gry brn gry silty gritty
 pyritic, sli sndy, silic text, gas bubs, filmy
 cond, blk ang wxy grsy carb pcs
 sst 1-2 clstrs, wht lt gry f grnd sub ang, ang
 grns, prly srtd, w/cem, silic cem, arg clay fill,
 pyritic, NVP filmy dead sfo, tr gas bubs, chrt
 tan gry brn lt orange mott, shrp frsh opa, frac
 por, 1st wht lt gry mott f xln blk ang gran,
 inter xln por, chrt, gas bubs, filmy transl
 SFO, nodor
 1st/dolo crm tan lt gry mott, f med xln gran soft
 chlky, tr glau, pyritic, inter xln por, gas bubs,
 nodor
 1st wht off wht, wht lt gry mott f sli med xln,
 crsly xln in prt, crs foss frags, calc xln fill,
 chrt, chrt wht opa
 1st/dolo in prt, off wht, wht lt gry mott, f sli
 med xln blk ang sli gran, crs foss frags, inter
 xln por, pyritic fill, chrt wht sub opa
 1st dolo in prt, tan drk tan, f xln blk dns ang
 hrd, sli chlky in prt, chrt, chrt tan shrp fsh





sub opaq
 Ist/dolo crm tan lt brn f vf xln gran sub chlky, tr sli sucr text, sndy in prt, chrt dull tan brn shrp frsh sub opaq, Ist wht tan gry mott f med xln blk ang inter xln por, crs foss frags, pyritic, chrt wht shrp frsh sub opaq

Ist dolo in prt, tan, lt brn brn, f tr vf xln gran sli chlky text, gran, sndy silic text, chrt dull tan brn shrp frsh sub opaq

Ist/dolo crm tan lt brn, f vf xln dns hrd blk, tr sub chky, gran sndy sli sucr text, silic in prt, chrt, chrt dull tan brn shrp frsh sub opaq

Ist dolo tan crm lt brn f vf xln dns gran sndy text, sli sucr, soft sub chlky, chrt dull tan brn shrp frsh sub opaq

shl drk gry green, teal green, wxy grsy text, sli pyritic, tr snd grn inclu

shl gry green teal green, fnly silty, wxy text, blk ang pcs, pyritic, fn snd grn inclu

sst lt gry tan f vf grnd sub ang, prly srted, sub fria, prly cem, arg, tr clay fill, tr pyritic tr gilson dead flky stain, sst wht clr clstrs, f grnd sub rded grns, w/srted, prly cem fria, NS

sst lt gry tan clstrs, f grnd sub rded fair to prly srted, fair to well cem, sub fria to fria, tr arg, tr clay fill, tr gilson dead stain, sst wht/cclr clstrs, f grnd, sub rded, w/srted fria, inter grn por, NS abun clr vf grnd w/rded loose snd grns in spl tray.

sst clr lt wht clstrs, f grnd sub rded to rded, fairly srted, fair cem, silic, gran soft fria to sub fria, inter gran por, blk gilson stain, brn oil smears on brk, tr gas bubs, nodor

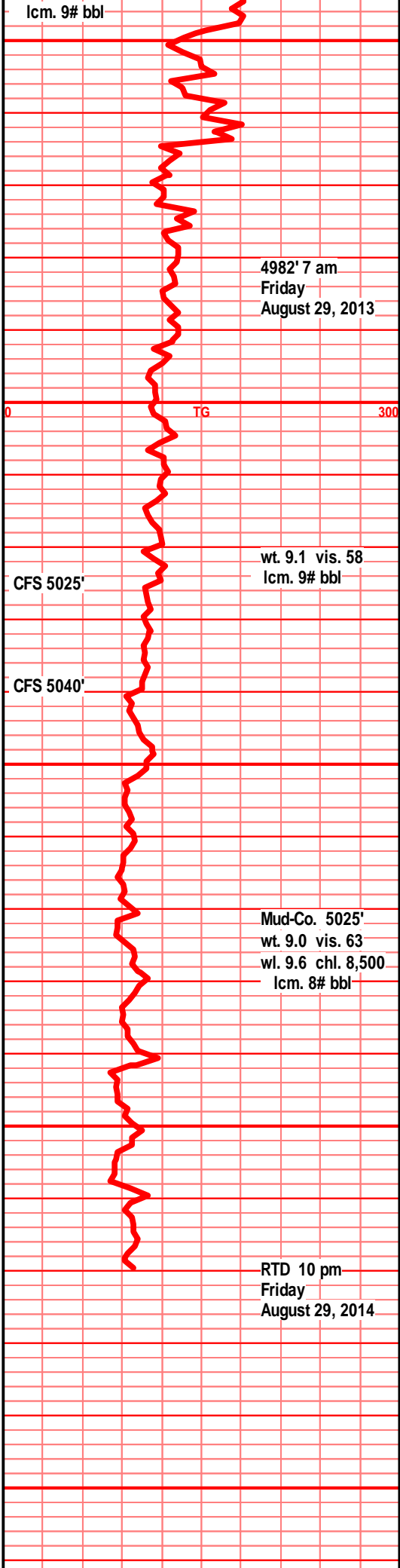
sst off wht/cclr semi frosted clstrs, f grnd, sub rded grns, w/srted, fria, prly cem, gran gd inter grn por, tr brn oil smears, tr gas bubs, nodor, sst wht off wht clstrs, f grnd, sub rded grns, w/srted, w/cem, silic cem, blk ang hrd clstrs, sub fria, hvy glau fill, NS

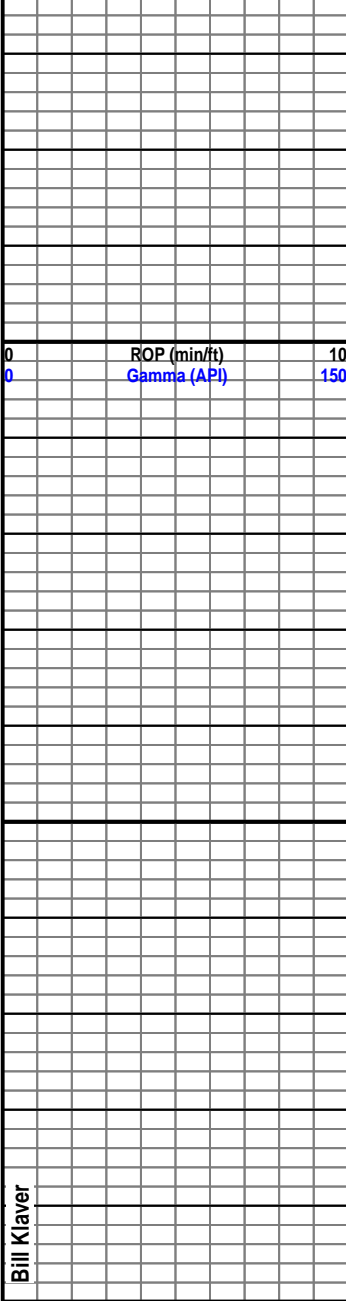
shl gry drk gry green, teal green, fnly silty, slick wxy text

shl gry drk gry green, teal green, fnly silty, wxy grsy text, pyritic, snd grn inclu

shl gry drk gry green, teal green, fnly silty, fn grnd snd grn inclu, pyritic

shl gry drk gry green teal green fnly silty, pyritic, snd grn inclu,



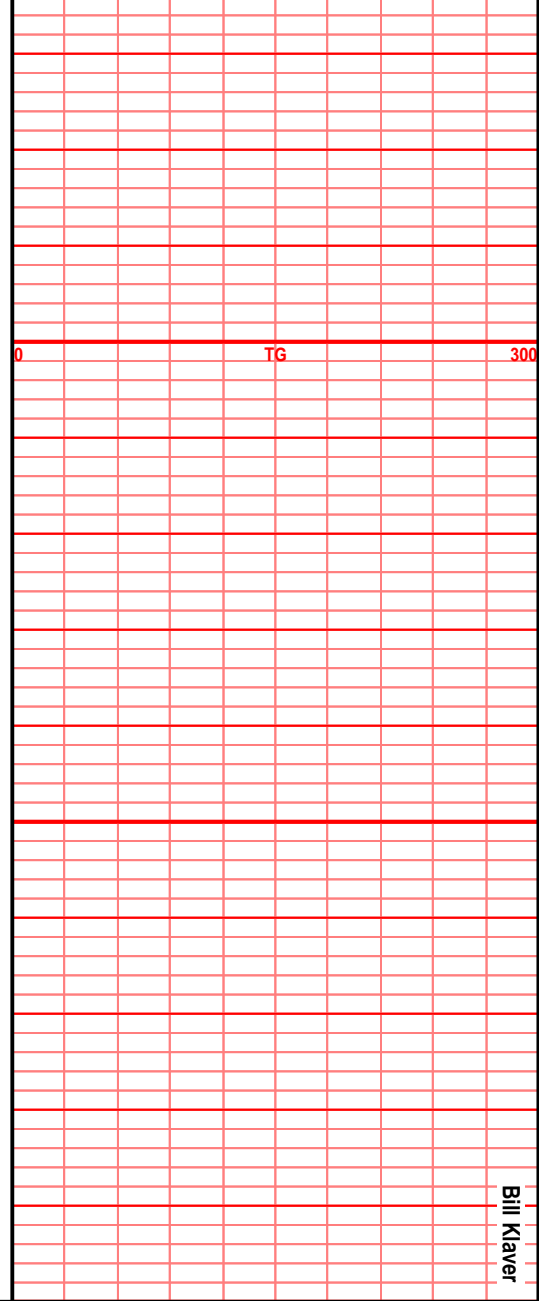


5170
5180
5190
5200
5210
5220
5230
5240
5250
5260
5270
5280
5290
300

ROP (min/ft) 10
Gamma (API) 150

Bill Klaver

Woolsey Operating Company
Tucker 'B' GU #6
1980' FNL & 1980' FEL
Sec. 11 - T34S - R11W
Roundup South Field
Barber County, Kansas
GL 1392' KB 1404'
AP # 15-007-24124-0000



TG 300

Bill Klaver