

Timothy G. Pierce

Petroleum Geologist

GEOLOGIST'S REPORT DRILLING TIME AND SAMPLE LOG

COMPANY R & B Oil and Gas Inc.

LEASE Chain Ranch #2
Amber Creek East

FIELD Amber Creek East

LOCATION SW SW

SEC 31 TWP 30 S RGE 11 W

COUNTY Barber STATE Kansas

CONTRACTOR Hardt Drilling

SPUD 9-15-2014 COMP 9-22-2014

RTD 4773 LTD 4775

MUD UP 3041 TYPE MUD Chemical

SAMPLES SAVED FROM 2700 TO RTD

DRILLING TIME KEPT FROM 2700 TO RTD

SAMPLES EXAMINED FROM 2700 TO RTD

GEOLOGICAL SUPERVISION FROM 2635' to RTD

GEOLOGIST ON WELL Tim Pierce

ELEVATIONS

KB 1758'

DF _____

GL 1748'

Measurements Are All
From Kelly Bushing

CASING

CONDUCTOR _____

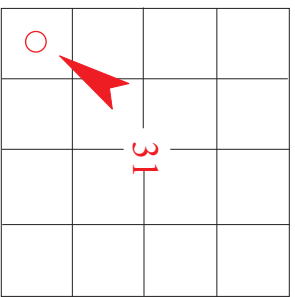
SURFACE 8-5/8" at 252'

PRODUCTION 5-1/2" at 4768'

ELECTRICAL SURVEYS

DIL / DUCP
Pioneer Energy Svcs.

| FORMATION TOPS | ELECTRIC LOG | SAMPLE |
|----------------|--------------|--------------|
| Onaga Shale | 2741 (-983) | 2738 (-980) |
| Heebner Shale | 3658 (-1900) | 3655 (-1897) |
| Lansing | 3863 (-2105) | 3862 (-2104) |
| Stark Shale | 4207 (-2549) | 4206 (-2548) |
| Cherokee Shale | 4381 (-2623) | 4382 (-2624) |
| Mississippi | 4383 (-2625) | 4386 (-2628) |
| Kinderhook Sh. | 4468 (-2710) | 4468 (-2710) |
| viola | 4654 (-2896) | 4654 (-2896) |
| Stimpson | 4742 (-2984) | 4740 (-2982) |



API# 15-007-24,215

REMARKS Samples and electric logs indicate a probable productive zone in the Mississippi from 4383' -4415'.

Other sample shows were observed in the Viola, Kansas City Swope, and Kansas City 'Dennis' zone, electric log parameters indicate these zones are most likely non-commercial.

There were no other zones of interest indicated by samples or electric logs.

Production casing was set on 9-23-14

Timothy G. Pierce

LEGEND

| | | | | | | | |
|-----------|-----------|-----------|-------|---------|-----------|-------|----------|
| | | | | | | | |
| Anhydrite | Sandstone | Limestone | Shale | Carb Sh | Cherty LS | Chert | Dolomite |

DRILLING TIME IN MINUTES PER FOOT

Rate of Penetration Decreases →

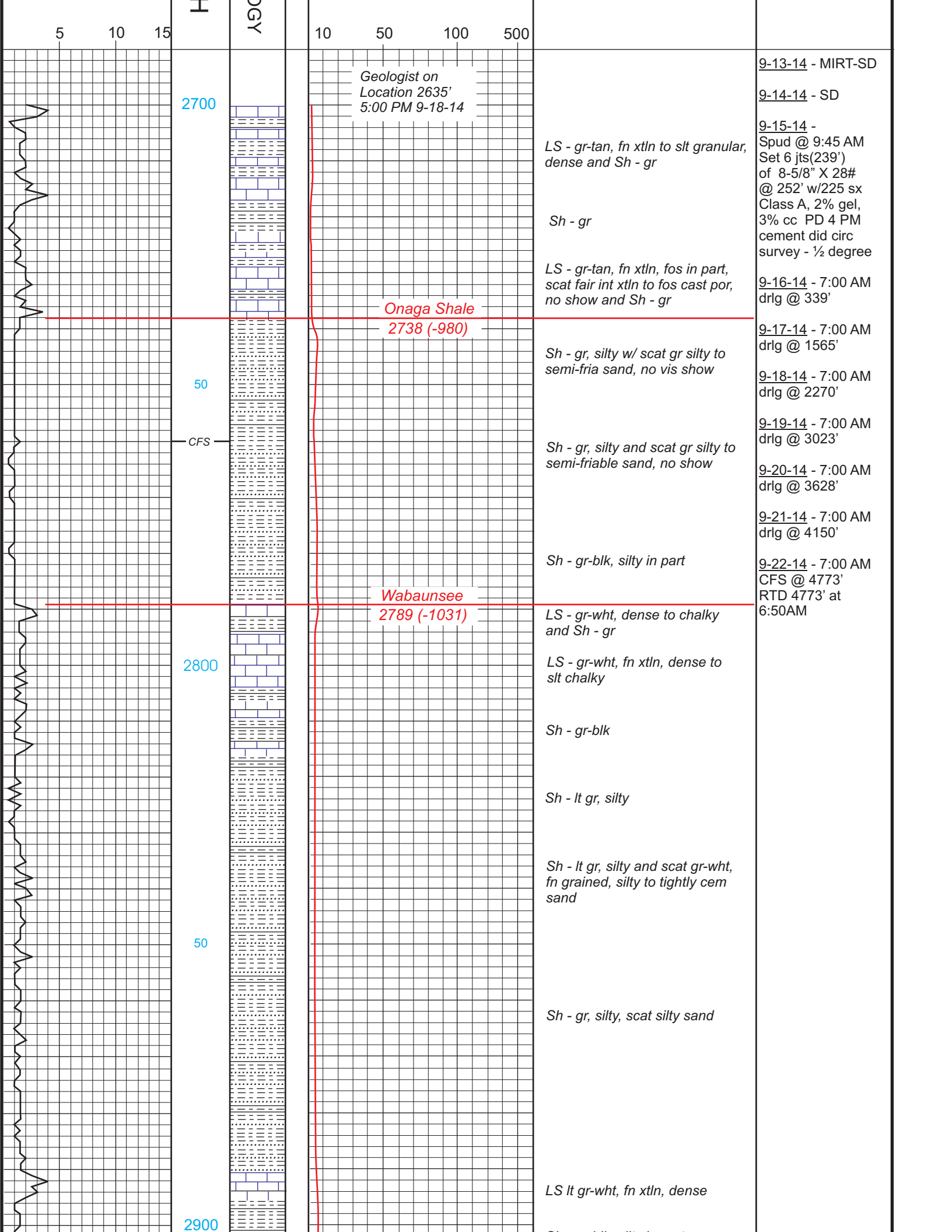
DEPTH

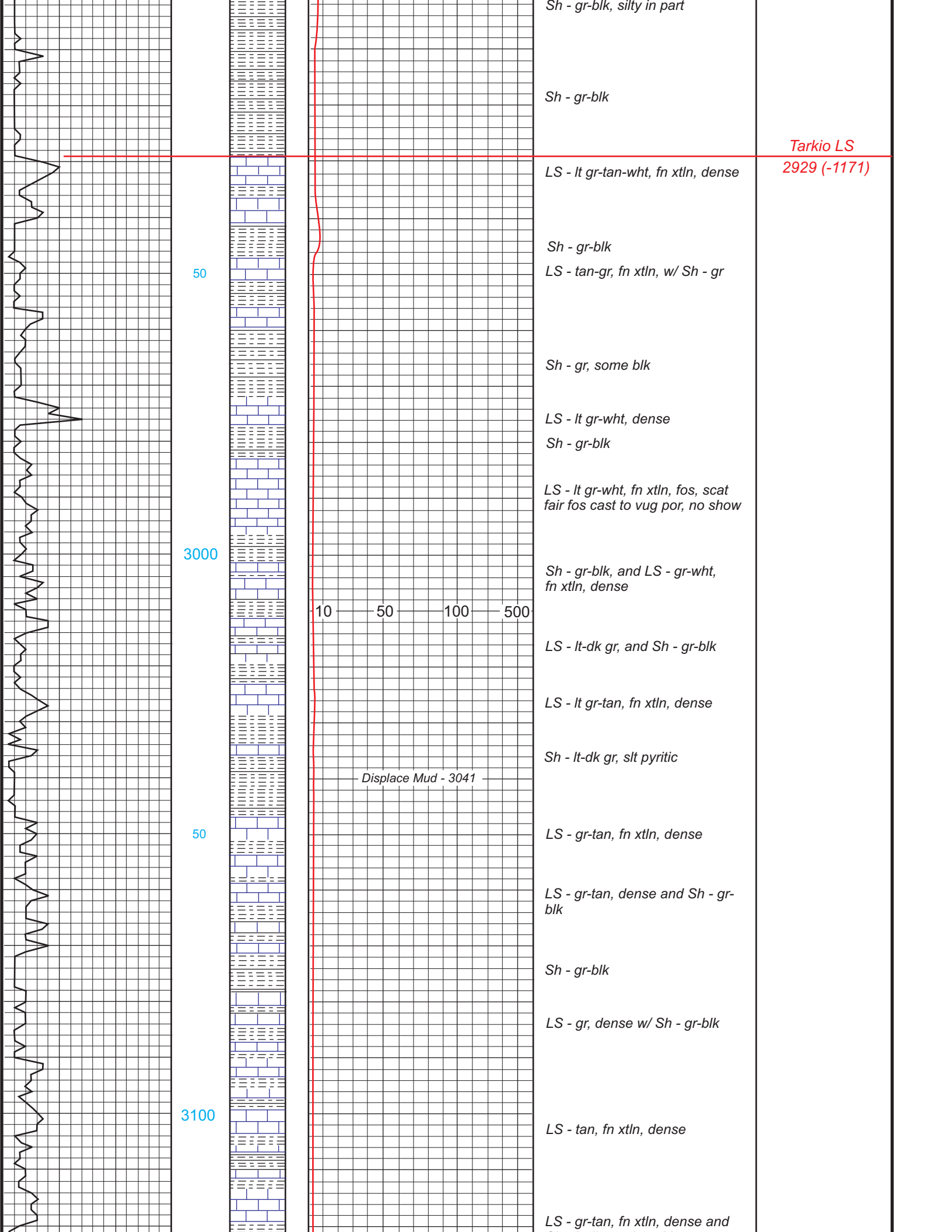
LITHOLOG

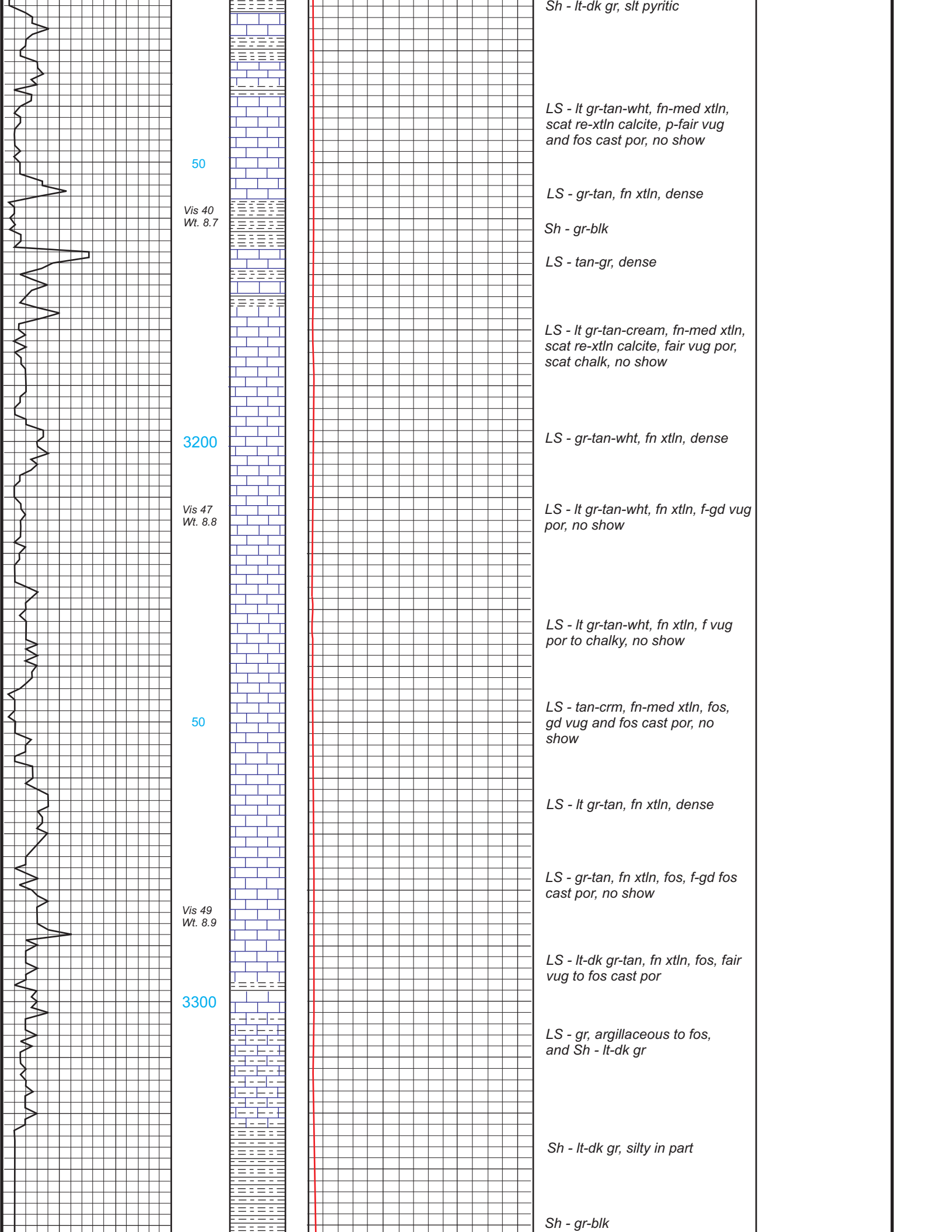
GAS SCALE

SAMPLE DESCRIPTION

REMARKS







50

Vis 40
Wt. 8.7

3200

Vis 47
Wt. 8.8

50

Vis 49
Wt. 8.9

3300

Sh - lt-dk gr, slt pyritic

LS - lt gr-tan-wht, fn-med xtln,
scat re-xtln calcite, p-fair vug
and fos cast por, no show

LS - gr-tan, fn xtln, dense

Sh - gr-blk

LS - tan-gr, dense

LS - lt gr-tan-cream, fn-med xtln,
scat re-xtln calcite, fair vug por,
scat chalk, no show

LS - gr-tan-wht, fn xtln, dense

LS - lt gr-tan-wht, fn xtln, f-gd vug
por, no show

LS - lt gr-tan-wht, fn xtln, f vug
por to chalky, no show

LS - tan-crm, fn-med xtln, fos,
gd vug and fos cast por, no
show

LS - lt gr-tan, fn xtln, dense

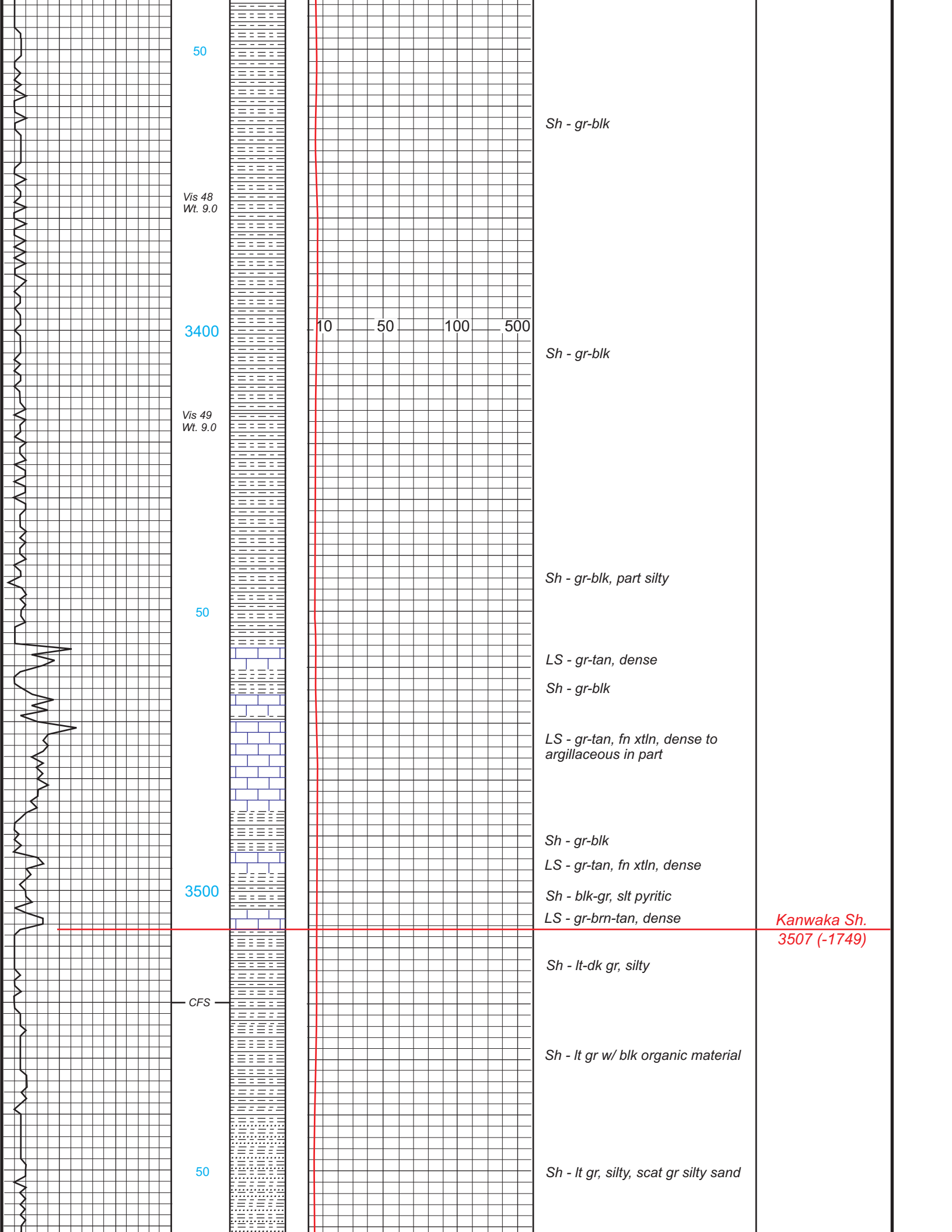
LS - gr-tan, fn xtln, fos, f-gd fos
cast por, no show

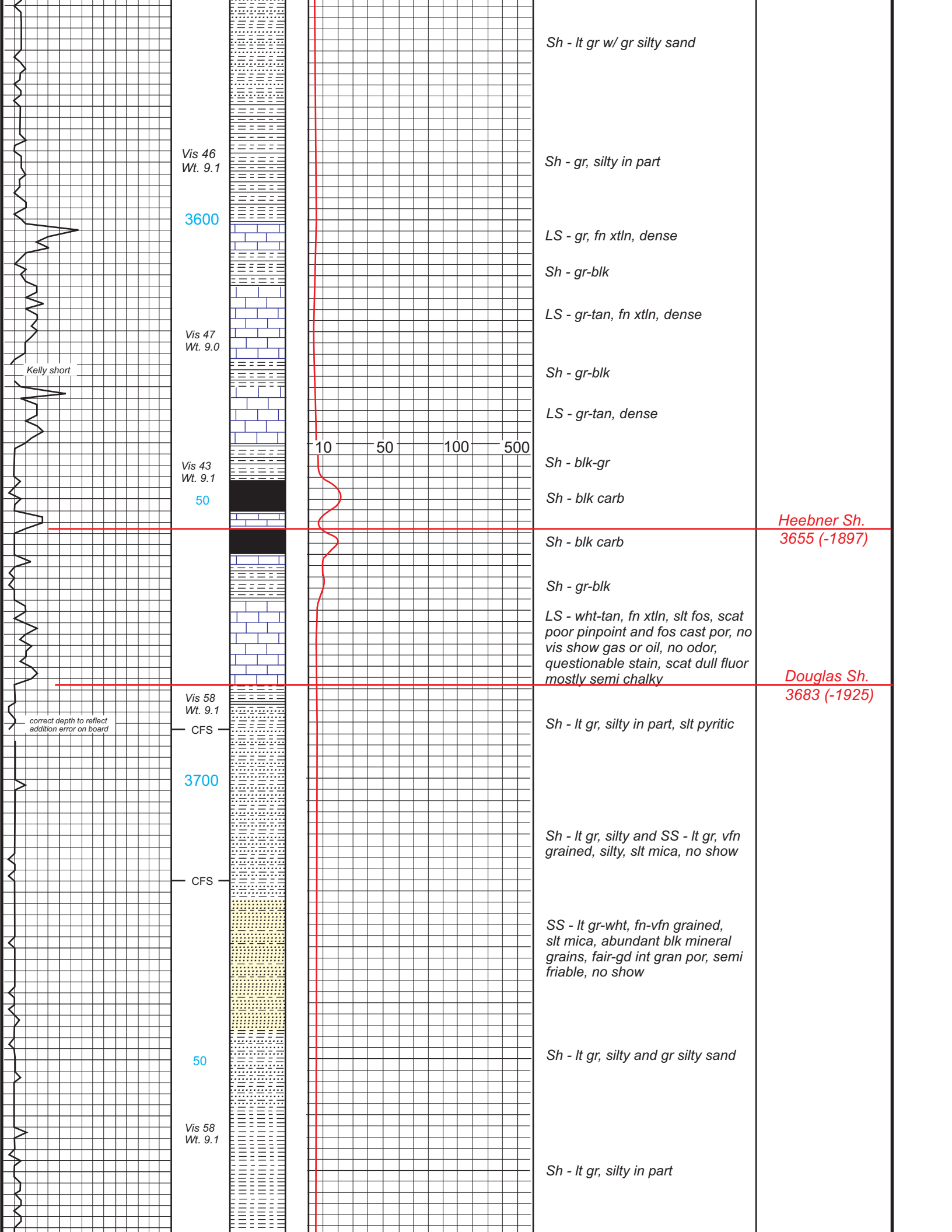
LS - lt-dk gr-tan, fn xtln, fos, fair
vug to fos cast por

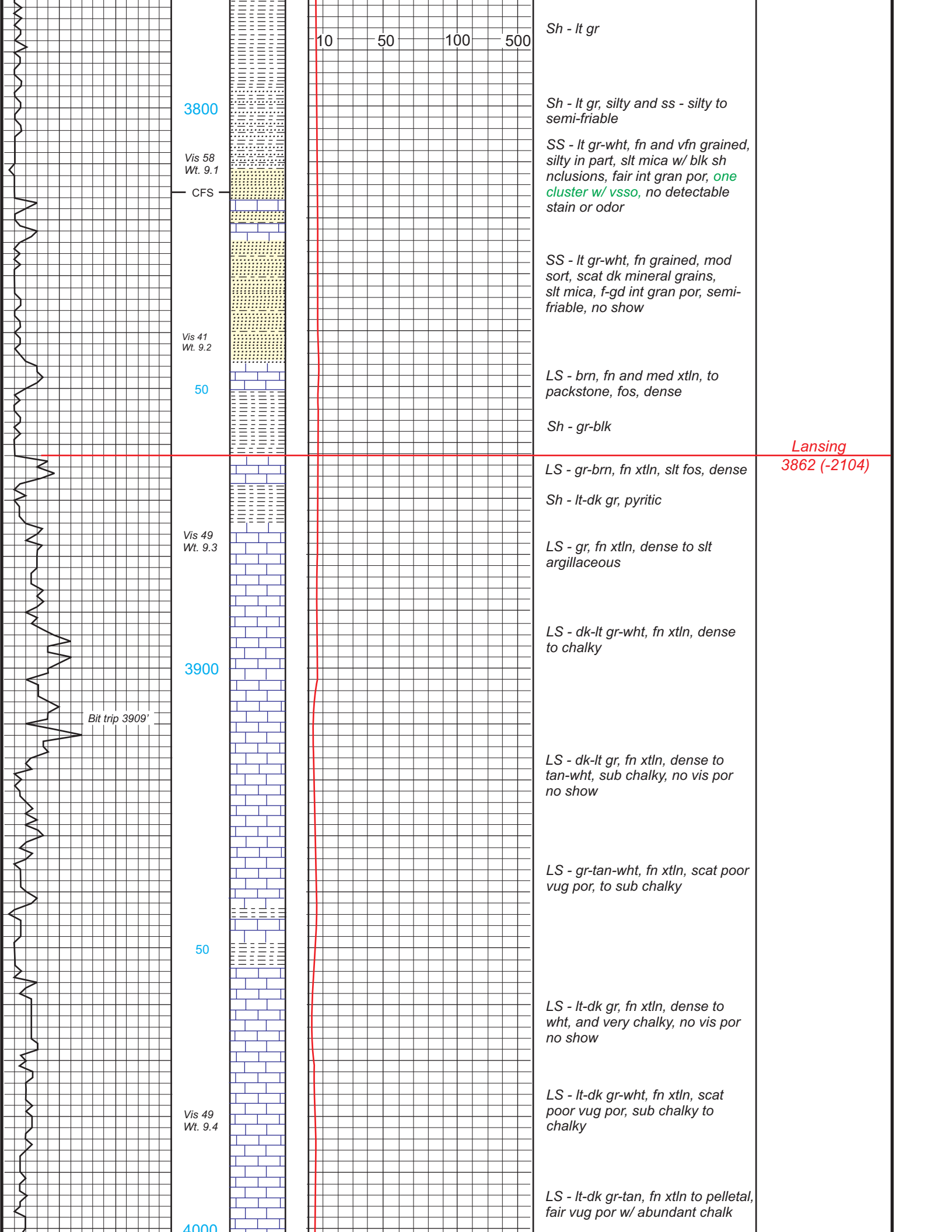
LS - gr, argillaceous to fos,
and Sh - lt-dk gr

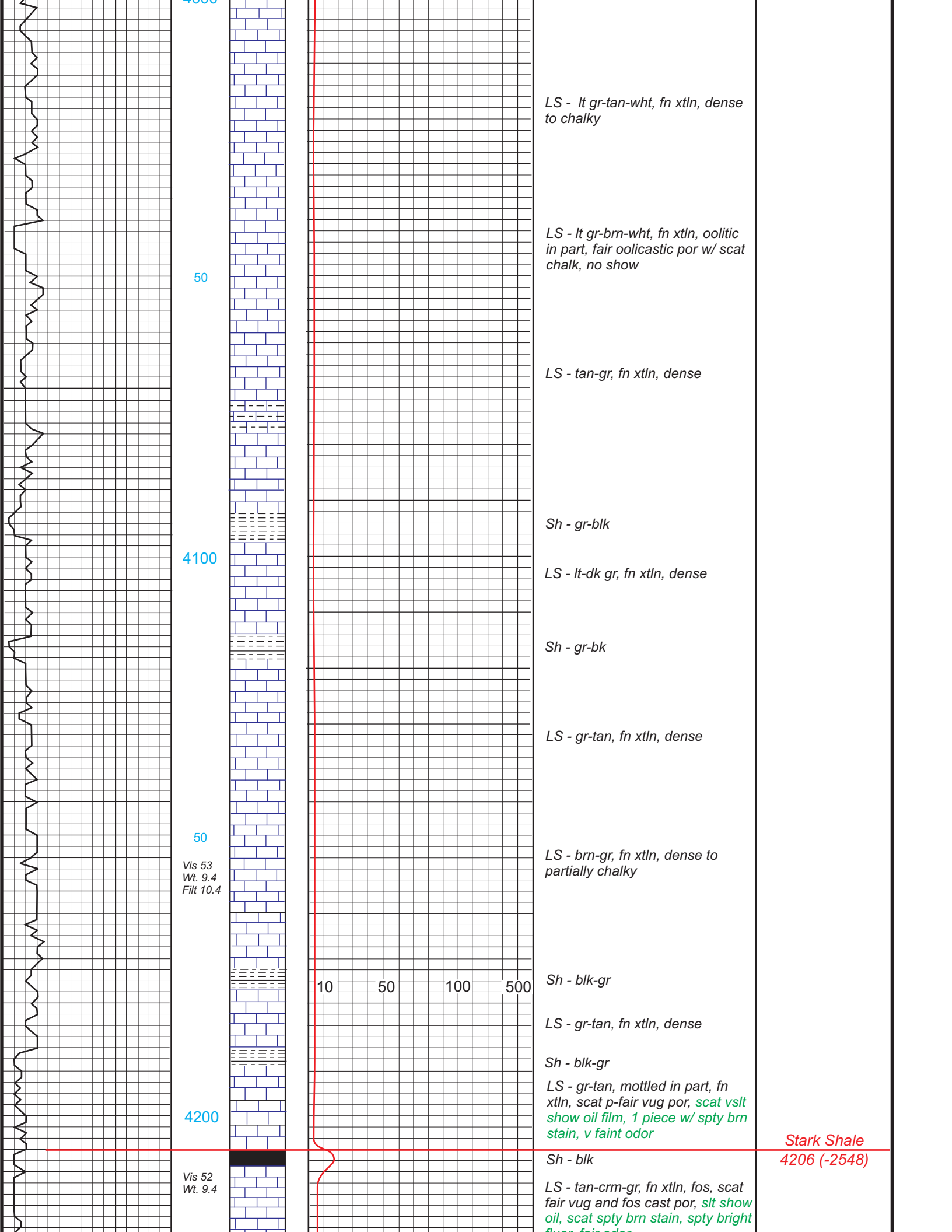
Sh - lt-dk gr, silty in part

Sh - gr-blk









4000

LS - lt gr-tan-wht, fn xtln, dense to chalky

50

LS - lt gr-brn-wht, fn xtln, oolitic in part, fair oolitic por w/ scat chalk, no show

LS - tan-gr, fn xtln, dense

4100

Sh - gr-blk

LS - lt-dk gr, fn xtln, dense

Sh - gr-bk

LS - gr-tan, fn xtln, dense

50

Vis 53
Wt. 9.4
Filt 10.4

LS - brn-gr, fn xtln, dense to partially chalky

10 50 100 500

Sh - blk-gr

LS - gr-tan, fn xtln, dense

Sh - blk-gr

LS - gr-tan, mottled in part, fn xtln, scat p-fair vug por, scat vslt show oil film, 1 piece w/ spty brn stain, v faint odor

4200

Stark Shale
4206 (-2548)

Vis 52
Wt. 9.4

Sh - blk

LS - tan-crm-gr, fn xtln, fos, scat fair vug and fos cast por, slt show oil, scat spty brn stain, spty bright fluor. faint odor

