

MUD LOG
WellSight Systems
Scale 1:240 (5"=100') Imperial
Measured Depth Log

Well Name: CAIN #1
Location: SECTION 36-TWP 30S-9E
License Number: 15-049-22599
Spud Date: 9/1/14
Surface Coordinates: 2970'FEL 1980' FNL

Region: ELK CO, KANSAS
Drilling Completed: 9/6/14

Bottom Hole
Coordinates:
Ground Elevation (ft): 1284 K.B. Elevation (ft): 1290
Logged Interval (ft): 1500 To: RTD Total Depth (ft): 2695
Formation: ARBUCKLE
Type of Drilling Fluid: MUD/CHEM

Printed by MUD.LOG from WellSight Systems 1-800-447-1534 www.WellSight.com

OPERATOR

Company: LONE WOLF OIL COMPANY
Address: BOX 241
MOLINE, KANSAS 67353
KLN 31119

GEOLOGIST

Name: JOE BAKER
Company:
Address: 401 E. DOUGLAS STE 525
WICHITA KANSAS 67002

FORMATION	LOG TOPS	KB 1290'
KANSAS CITY	1668(-378)	
FT SCOTT	2036(-746)	
CHEROKEE	2068(-778)	
MISS LM	2356(-1066)	
KINDERHOOK	2610(-1320)	
ARBUCKLE	2655(-1365)	
RTD	2695(-1405)	
LTD	2689(-1399)	

1500

TRIP PDC BIT FOR BUTTON @ 1500

START 1' DRILLING TIME 20' WET AND DRY SAMPLES

IOLA
1530(-240)

LS GRY DNS

1550

SST GRY/WH FNGRN MIC NO POR NS

LAYTON
SAND

SST LT GRY WH FN-MED GRN FR POR NO SHOWS

1600

ROP (min/ft)

LS TAN SL FOSSIL NS

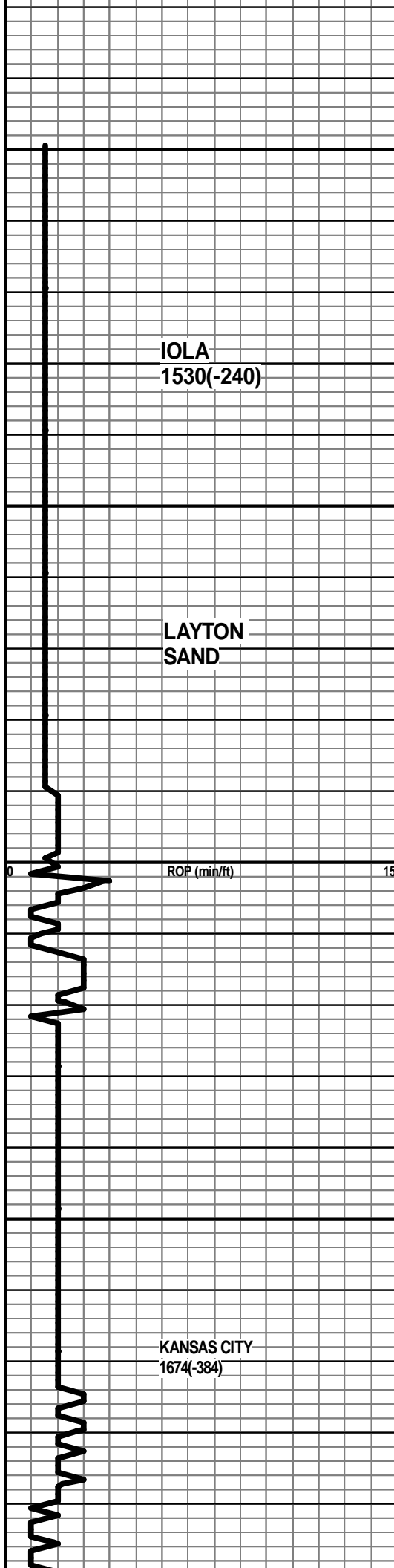
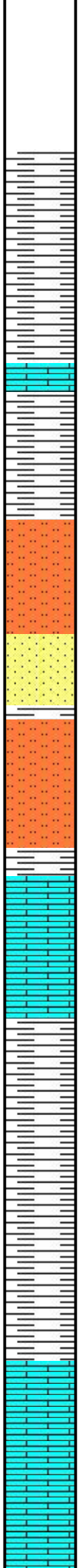
SHALE SLST GRY

1650

KANSAS CITY
1674(-384)

LS TAN DNS SHLY IN PT NO VIS POR NS

LS TAN SL FOSSIL SCAT LT PNPT/FOSS POR NO SHOWS



TRIP PDC BIT FOR BUTTON @ 1500
 START 1' DRILLING TIME 20' WET AND DRY SAMPLES

LS GRY DNS

SST GRY/WH FNGRN MIC NO POR NS

SST LT GRY WH FN-MED GRN FR POR NO SHOWS

LS TAN SL FOSSIL NS

SHALE SLST GRY

LS TAN DNS SHLY IN PT NO VIS POR NS

LS TAN SL FOSSIL SCAT LT PNPT/FOSS POR NO SHOWS

