

**LEGEND:**

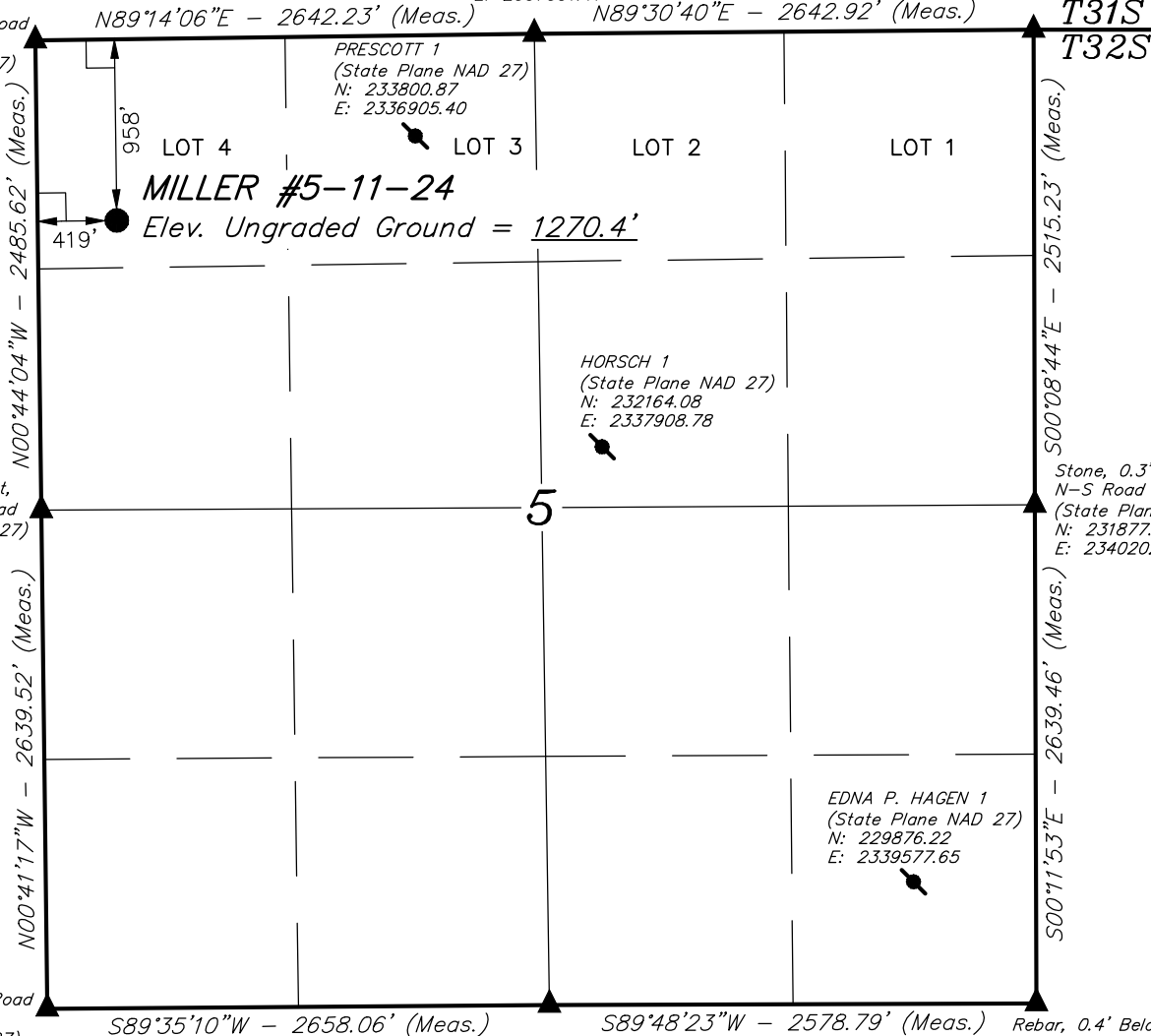
- └─┘ = 90° SYMBOL
- = PROPOSED WELLHEAD.
- = TARGET BOTTOM HOLE.
- ▲ = SECTION CORNERS LOCATED.

# T32S, R1E, 6th P.M.

Alum. Cap, 0.5'  
Below Ground  
(State Plane NAD 27)  
N: 234346.76  
E: 2337531.41

Stone, 1.7' Below  
Road Intersection  
(State Plane NAD 27)  
N: 234392.48  
E: 2340173.74

Rebar, 0.7' Below Road  
Intersection, Stone  
(State Plane NAD 27)  
N: 234288.33  
E: 2334890.03



Concrete Monument,  
1.1' Below N-S Road  
(State Plane NAD 27)  
N: 231803.50  
E: 2334943.68

HORSCH 1  
(State Plane NAD 27)  
N: 232164.08  
E: 2337908.78

EDNA P. HAGEN 1  
(State Plane NAD 27)  
N: 229876.22  
E: 2339577.65

Stone, 0.3' Below  
N-S Road  
(State Plane NAD 27)  
N: 231877.63  
E: 2340202.19

Rebar, 0.2' Below Road  
Intersection, Stone  
(State Plane NAD 27)  
N: 229164.77  
E: 2334998.53

Alum. Cap, 0.7'  
Below Ground  
(State Plane NAD 27)  
N: 229207.27  
E: 2337656.06

Rebar, 0.4' Below  
Road Intersection  
(State Plane NAD 27)  
N: 229238.59  
E: 2340234.47



<b>NAD 83 (SURFACE LOCATION)</b>	
LATITUDE = 37°18'06.60" (37.301833)	LONGITUDE = 97°20'50.93" (97.347481)
<b>NAD 27 (SURFACE LOCATION)</b>	
LATITUDE = 37°18'06.52" (37.301811)	LONGITUDE = 97°20'49.77" (97.347158)
<b>STATE PLANE NAD 27</b>	
N: 233339.75	E: 2335329.11

**CERTIFICATE**

THIS IS TO CERTIFY THAT THE ABOVE PLAT WAS PREPARED FROM FIELD NOTES OF ACTUAL SURVEYS MADE BY ME OR UNDER MY SUPERVISION AND THAT THE SAME ARE TRUE AND CORRECT TO THE BEST OF MY KNOWLEDGE AND BELIEF.



**BASIS OF BEARINGS**  
BASIS OF BEARINGS IS A G.P.S. OBSERVATION

**BASIS OF ELEVATION**

BENCH MARK (1356) LOCATED IN THE NE 1/4 OF SECTION 4, T31S, R3W, 6th P.M., TAKEN FROM THE CONWAY SPRINGS QUADRANGLE, KANSAS, 7.5 MINUTE QUAD. (TOPOGRAPHIC MAP) PUBLISHED BY THE UNITED STATES DEPARTMENT OF THE INTERIOR, GEOLOGICAL SURVEY. SAID ELEVATION OBTAINED FROM THE NGS DATA SHEET NAVD 88 IS 1356.58 FEET.

**Source Energy Midcon, LLC**

**MILLER #5-11-24  
LOT 4, SECTION 5, T32S, R1E, 6th P.M.  
SUMNER COUNTY, KANSAS**



SURVEYED BY: J.P., T.B.	SURVEY DATE: 12-11-14
DRAWN BY: J.J.	DATE DRAWN: 12-12-14
SCALE: 1" = 1000'	REVISED: 00-00-00

**WELL LOCATION PLAT**



**UELS, LLC**  
Corporate Office \* 85 South 200 East  
Vernal, UT 84078 \* (435) 789-1017