

Unit Petroleum

Reno County, Kansas [NAD 83]

Section 15 T25S-R10W

Feedlot 22 #1H

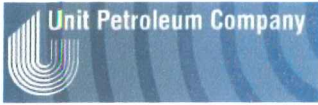
OH

Design: OH

Standard Survey Report

09 October, 2014





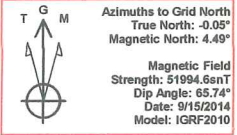
Unit Petroleum
 Project: Reno County, Kansas [NAD 83]
 Site: Section 15 T25S-R10W
 Well: Feedlot 22 #1H
 Wellbore: OH
 Design: Design #3
 Lat: 37° 52' 7.296 N
 Long: 98° 24' 54.989 W
 Pad GL: 1755.00
 KB: 14' KB @ 1769.00usft (UDI 331)



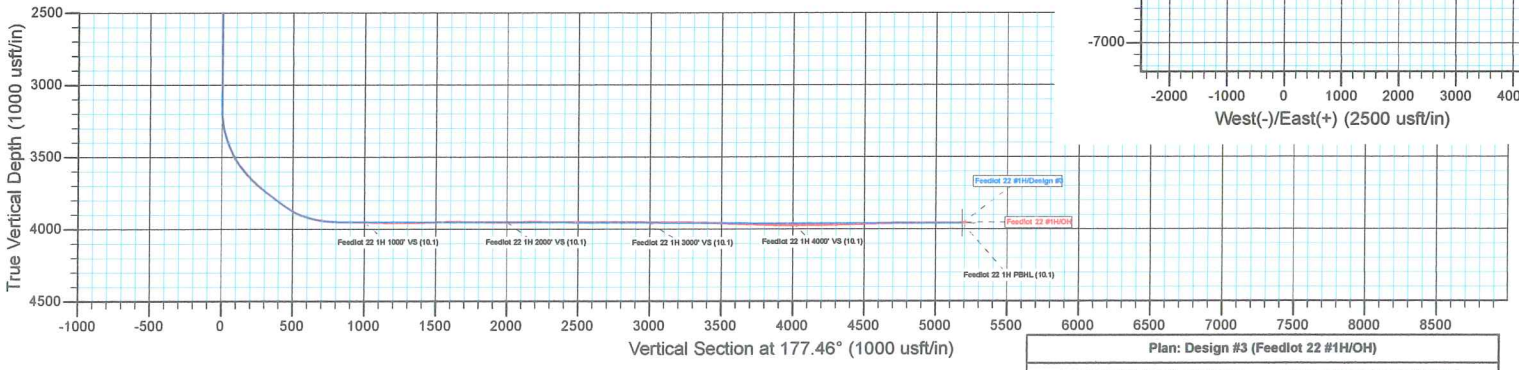
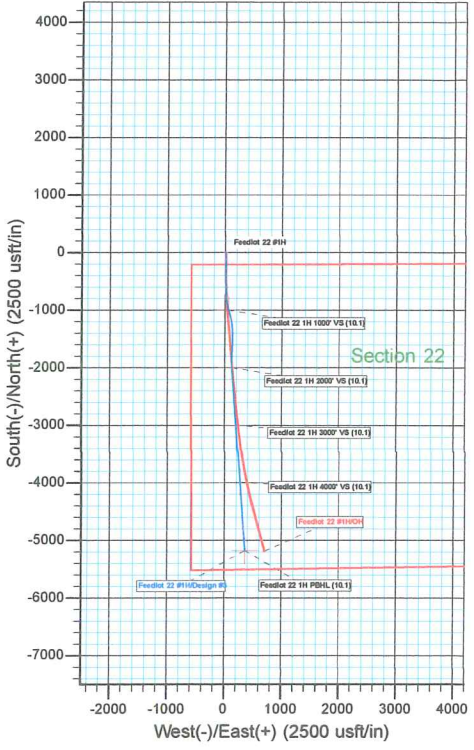
SECTION DETAILS										
MD	Inc	Azi	TVD	+N-S	+E-W	Dleg	TFace	Vsect		
4317.00	83.90	176.80	3943.46	-726.71	13.59	0.00	0.00	726.59		
4365.00	88.00	176.80	3946.85	-774.50	16.27	8.54	0.00	774.46		
4587.29	89.88	161.67	3950.99	-802.19	57.87	6.86	-83.10	993.77		
4593.88	89.88	161.67	3951.00	-898.45	59.74	0.00	0.00	1000.12		
5117.18	89.99	182.60	3951.59	-1513.94	130.97	4.00	89.71	1518.26		
5427.53	89.99	182.60	3951.64	-1823.98	116.89	0.00	0.00	1827.37		
5600.34	89.77	175.69	3952.00	-1986.67	119.47	4.00	-91.83	2000.00		
6600.83	89.77	175.69	3956.00	-2994.32	194.66	0.00	0.00	3000.00		
6602.26	89.83	175.69	3956.01	-2995.74	194.77	4.00	0.00	3001.43		
7599.43	89.83	175.69	3959.00	-3980.09	289.71	0.00	0.00	3988.12		
7601.31	89.90	175.69	3959.00	-3991.87	289.85	4.00	-2.33	4000.00		
8787.04	89.90	175.69	3961.00	-5174.33	359.02	0.00	0.00	5185.15		

WELL DETAILS: Feedlot 22 #1H						
+N-S	+E-W	Northing	Ground Level: Easting	1755.00 Latitude	Longitude	Slot
0.00	0.00	1750029.00	1336790.00	37° 52' 7.296 N	98° 24' 54.989 W	

PROJECT DETAILS: Reno County, Kansas [NAD 83]
 Geodetic System: US State Plane 1983
 Datum: North American Datum 1983
 Ellipsoid: GRS 1980
 Zone: Kansas Southern Zone
 System Datum: Mean Sea Level



NOTE: All Lease lines and Hard lines are estimates only and are subject to the customers' approval.



Plan: Design #3 (Feedlot 22 #1H/OH)
 Created By: Derek Stephens Date: 6:50, October 09 2014



Company:	Unit Petroleum	Local Co-ordinate Reference:	Well Feedlot 22 #1H
Project:	Reno County, Kansas [NAD 83]	TVD Reference:	14' KB @ 1769.00usft (UDI 331)
Site:	Section 15 T25S-R10W	MD Reference:	14' KB @ 1769.00usft (UDI 331)
Well:	Feedlot 22 #1H	North Reference:	Grid
Wellbore:	OH	Survey Calculation Method:	Minimum Curvature
Design:	OH	Database:	EDM 5000.1 Single User Db

Project	Reno County, Kansas [NAD 83]		
Map System:	US State Plane 1983	System Datum:	Mean Sea Level
Geo Datum:	North American Datum 1983		
Map Zone:	Kansas Southern Zone		Using geodetic scale factor

Site	Section 15 T25S-R10W				
Site Position:		Northing:	1,750,023.00 usft	Latitude:	37° 52' 7.214 N
From:	Map	Easting:	1,339,150.00 usft	Longitude:	98° 24' 25.556 W
Position Uncertainty:	0.00 usft	Slot Radius:	13-3/16 "	Grid Convergence:	0.06 °

Well	Feedlot 22 #1H					
Well Position	+N/-S	0.00 usft	Northing:	1,750,029.00 usft	Latitude:	37° 52' 7.296 N
	+E/-W	0.00 usft	Easting:	1,336,790.00 usft	Longitude:	98° 24' 54.989 W
Position Uncertainty		0.00 usft	Wellhead Elevation:	usft	Ground Level:	1,755.00 usft

Wellbore	OH				
Magnetics	Model Name	Sample Date	Declination (°)	Dip Angle (°)	Field Strength (nT)
	IGRF2010	9/15/2014	4.55	65.74	51,995

Design	OH				
Audit Notes:					
Version:	1.0	Phase:	ACTUAL	Tie On Depth:	0.00
Vertical Section:	Depth From (TVD) (usft)	+N/-S (usft)	+E/-W (usft)	Direction (°)	
	0.00	0.00	0.00	177.46	

Survey Program	Date	10/9/2014			
From (usft)	To (usft)	Survey (Wellbore)	Tool Name	Description	
71.47	3,081.71	Gyro (OH)	CB-GYRO-MS	Camera based gyro multishot	
3,170.00	8,841.00	MWD (OH)	MWD	MWD - Standard	

Measured Depth (usft)	Inclination (°)	Azimuth (°)	Vertical Depth (usft)	+N/-S (usft)	+E/-W (usft)	Vertical Section (usft)	Dogleg Rate (°/100usft)	Build Rate (°/100usft)	Turn Rate (°/100usft)
0.00	0.00	0.00	0.00	0.00	0.00	0.00	0.00	0.00	0.00
71.47	0.29	62.93	71.47	0.08	0.16	-0.08	0.41	0.41	0.00
165.54	0.21	73.94	165.54	0.24	0.54	-0.21	0.10	-0.09	11.70
259.61	0.39	96.01	259.61	0.25	1.02	-0.21	0.22	0.19	23.46
353.68	0.36	119.82	353.68	0.07	1.60	0.00	0.17	-0.03	25.31
447.75	0.02	155.20	447.74	-0.09	1.86	0.17	0.37	-0.36	37.61
541.82	0.11	148.74	541.81	-0.18	1.91	0.27	0.10	0.10	-6.87
635.89	0.04	132.43	635.88	-0.28	1.99	0.37	0.08	-0.07	-17.34
729.96	0.11	93.18	729.95	-0.31	2.10	0.40	0.09	0.07	-41.72
824.03	0.28	51.95	824.02	-0.17	2.37	0.28	0.22	0.18	-43.83



Company:	Unit Petroleum	Local Co-ordinate Reference:	Well Feedlot 22 #1H
Project:	Reno County, Kansas [NAD 83]	TVD Reference:	14' KB @ 1769.00usft (UDI 331)
Site:	Section 15 T25S-R10W	MD Reference:	14' KB @ 1769.00usft (UDI 331)
Well:	Feedlot 22 #1H	North Reference:	Grid
Wellbore:	OH	Survey Calculation Method:	Minimum Curvature
Design:	OH	Database:	EDM 5000.1 Single User Db

Survey

Measured Depth (usft)	Inclination (°)	Azimuth (°)	Vertical Depth (usft)	+N/-S (usft)	+E/-W (usft)	Vertical Section (usft)	Dogleg Rate (°/100usft)	Build Rate (°/100usft)	Turn Rate (°/100usft)
918.10	0.27	30.28	918.09	0.16	2.66	-0.04	0.11	-0.01	-23.04
1,012.17	0.27	11.55	1,012.16	0.57	2.82	-0.44	0.09	0.00	-19.91
1,106.24	0.30	46.66	1,106.23	0.96	3.04	-0.82	0.19	0.03	37.32
1,200.31	0.20	76.78	1,200.30	1.16	3.38	-1.01	0.17	-0.11	32.02
1,294.38	0.24	90.49	1,294.37	1.20	3.74	-1.03	0.07	0.04	14.57
1,388.45	0.41	120.07	1,388.44	1.03	4.23	-0.84	0.25	0.18	31.44
1,482.52	0.44	135.03	1,482.51	0.60	4.77	-0.39	0.12	0.03	15.90
1,576.59	0.50	142.39	1,576.57	0.02	5.28	0.21	0.09	0.06	7.82
1,670.66	0.18	137.12	1,670.64	-0.41	5.63	0.66	0.34	-0.34	-5.60
1,764.73	0.33	126.50	1,764.71	-0.68	5.95	0.94	0.17	0.16	-11.29
1,858.80	0.45	123.09	1,858.78	-1.04	6.48	1.33	0.13	0.13	-3.62
1,952.87	0.36	105.89	1,952.84	-1.32	7.07	1.64	0.16	-0.10	-18.28
2,046.94	0.26	115.01	2,046.91	-1.50	7.55	1.83	0.12	-0.11	9.69
2,141.01	0.37	120.91	2,140.98	-1.74	8.00	2.10	0.12	0.12	6.27
2,235.08	0.18	167.83	2,235.05	-2.04	8.29	2.41	0.30	-0.20	49.88
2,329.15	0.28	214.22	2,329.12	-2.38	8.20	2.74	0.22	0.11	49.31
2,423.22	0.05	260.20	2,423.19	-2.57	8.03	2.93	0.26	-0.24	48.88
2,517.29	0.28	302.05	2,517.26	-2.46	7.79	2.80	0.26	0.24	44.49
2,611.36	0.23	344.59	2,611.33	-2.16	7.55	2.49	0.20	-0.05	45.22
2,705.43	0.21	357.00	2,705.40	-1.80	7.49	2.13	0.05	-0.02	13.19
2,799.50	0.22	357.36	2,799.47	-1.45	7.47	1.78	0.01	0.01	0.38
2,893.57	0.33	359.87	2,893.54	-1.00	7.46	1.33	0.12	0.12	2.67
2,987.64	0.35	343.24	2,987.60	-0.45	7.38	0.78	0.11	0.02	-17.68
3,081.71	0.40	328.78	3,081.67	0.10	7.12	0.21	0.11	0.05	-15.37
3,170.00	0.10	186.90	3,169.96	0.29	6.95	0.02	0.55	-0.34	-160.70
3,201.00	2.20	179.40	3,200.95	-0.33	6.96	0.64	6.78	6.77	-24.19
3,233.00	5.60	179.80	3,232.88	-2.51	6.97	2.81	10.63	10.63	1.25
3,264.00	8.90	182.00	3,263.62	-6.42	6.89	6.72	10.68	10.65	7.10
3,296.00	12.00	182.60	3,295.09	-12.22	6.65	12.50	9.69	9.69	1.88
3,328.00	14.60	181.60	3,326.23	-19.57	6.39	19.83	8.16	8.13	-3.13
3,360.00	17.00	180.40	3,357.02	-28.28	6.24	28.53	7.57	7.50	-3.75
3,391.00	19.50	181.00	3,386.45	-37.99	6.12	38.22	8.09	8.06	1.94
3,423.00	21.40	179.50	3,416.44	-49.17	6.08	49.39	6.16	5.94	-4.69
3,454.00	23.50	178.00	3,445.09	-61.00	6.35	61.22	7.02	6.77	-4.84
3,480.00	25.60	178.50	3,468.73	-71.80	6.67	72.02	8.12	8.08	1.92
3,512.00	28.80	179.50	3,497.19	-86.42	6.92	86.64	10.10	10.00	3.13
3,544.00	31.70	179.80	3,524.83	-102.54	7.02	102.75	9.07	9.06	0.94
3,576.00	34.60	179.30	3,551.62	-120.04	7.16	120.23	9.10	9.06	-1.56
3,608.00	37.60	178.30	3,577.47	-138.88	7.56	139.08	9.55	9.38	-3.13
3,640.00	40.30	177.60	3,602.36	-158.98	8.28	159.19	8.55	8.44	-2.19
3,671.00	42.70	177.60	3,625.57	-179.51	9.14	179.73	7.74	7.74	0.00
3,702.00	44.60	178.10	3,648.00	-200.89	9.94	201.13	6.23	6.13	1.61
3,734.00	46.40	178.90	3,670.43	-223.70	10.54	223.95	5.90	5.63	2.50



Company:	Unit Petroleum	Local Co-ordinate Reference:	Well Feedlot 22 #1H
Project:	Reno County, Kansas [NAD 83]	TVD Reference:	14' KB @ 1769.00usft (UDI 331)
Site:	Section 15 T25S-R10W	MD Reference:	14' KB @ 1769.00usft (UDI 331)
Well:	Feedlot 22 #1H	North Reference:	Grid
Wellbore:	OH	Survey Calculation Method:	Minimum Curvature
Design:	OH	Database:	EDM 5000.1 Single User Db

Survey										
Measured Depth (usft)	Inclination (°)	Azimuth (°)	Vertical Depth (usft)	+N-S (usft)	+E-W (usft)	Vertical Section (usft)	Dogleg Rate (°/100usft)	Build Rate (°/100usft)	Turn Rate (°/100usft)	
3,765.00	48.40	179.70	3,691.41	-246.52	10.82	246.76	6.73	6.45	2.58	
3,797.00	50.90	179.90	3,712.13	-270.90	10.90	271.12	7.83	7.81	0.63	
3,828.00	51.90	180.20	3,731.47	-295.13	10.88	295.32	3.31	3.23	0.97	
3,860.00	53.00	180.20	3,750.97	-320.50	10.79	320.66	3.44	3.44	0.00	
3,892.00	54.10	181.10	3,769.99	-346.24	10.50	346.36	4.12	3.44	2.81	
3,924.00	54.20	181.00	3,788.73	-372.17	10.02	372.25	0.40	0.31	-0.31	
3,955.00	54.20	180.40	3,806.86	-397.31	9.71	397.35	1.57	0.00	-1.94	
3,987.00	54.10	181.10	3,825.60	-423.25	9.37	423.25	1.80	-0.31	2.19	
4,025.00	55.30	180.80	3,847.56	-454.26	8.86	454.20	3.22	3.16	-0.79	
4,050.00	57.80	180.00	3,861.34	-475.11	8.72	475.03	10.35	10.00	-3.20	
4,082.00	61.60	180.00	3,877.48	-502.74	8.72	502.63	11.88	11.88	0.00	
4,114.00	65.70	180.00	3,891.68	-531.40	8.72	531.27	12.81	12.81	0.00	
4,146.00	68.80	179.70	3,904.05	-560.91	8.80	560.75	9.73	9.69	-0.94	
4,178.00	71.90	179.10	3,914.81	-591.04	9.11	590.87	9.85	9.69	-1.88	
4,210.00	74.70	178.70	3,924.01	-621.68	9.70	621.50	8.83	8.75	-1.25	
4,242.00	77.70	178.30	3,931.64	-652.75	10.52	652.57	9.45	9.38	-1.25	
4,274.00	80.60	177.80	3,937.66	-684.15	11.59	683.99	9.19	9.06	-1.56	
4,317.00	83.90	176.80	3,943.46	-726.71	13.59	726.59	8.01	7.67	-2.33	
4,415.00	88.60	175.10	3,949.87	-824.22	20.50	824.32	5.10	4.80	-1.73	
4,477.00	89.20	175.30	3,951.06	-885.99	25.69	886.26	1.02	0.97	0.32	
4,539.00	89.60	175.30	3,951.71	-947.78	30.77	948.21	0.65	0.65	0.00	
4,591.82	90.47	175.56	3,951.68	-1,000.43	34.98	1,000.99	1.71	1.64	0.49	
Feedlot 22 1H 1000' VS (10.1)										
4,600.00	90.60	175.60	3,951.60	-1,008.59	35.61	1,009.17	1.71	1.64	0.49	
4,663.00	88.80	175.00	3,951.93	-1,071.37	40.77	1,072.12	3.01	-2.86	-0.95	
4,725.00	89.10	175.10	3,953.07	-1,133.13	46.12	1,134.06	0.51	0.48	0.16	
4,787.00	89.40	174.60	3,953.88	-1,194.87	51.68	1,195.99	0.94	0.48	-0.81	
4,850.00	89.90	174.60	3,954.27	-1,257.59	57.61	1,258.91	0.79	0.79	0.00	
4,912.00	90.30	174.60	3,954.16	-1,319.32	63.45	1,320.83	0.65	0.65	0.00	
4,974.00	90.80	175.30	3,953.56	-1,381.07	68.90	1,382.77	1.39	0.81	1.13	
5,037.00	90.80	174.60	3,952.68	-1,443.82	74.45	1,445.70	1.11	0.00	-1.11	
5,098.00	91.70	174.70	3,951.35	-1,504.54	80.14	1,506.61	1.48	1.48	0.16	
5,160.00	90.20	174.60	3,950.32	-1,566.26	85.92	1,568.53	2.42	-2.42	-0.16	
5,222.00	91.00	174.30	3,949.67	-1,627.97	91.91	1,630.44	1.38	1.29	-0.48	
5,283.00	89.40	174.70	3,949.46	-1,688.68	97.76	1,691.35	2.70	-2.62	0.66	
5,345.00	90.00	174.90	3,949.79	-1,750.43	103.38	1,753.29	1.02	0.97	0.32	
5,406.00	88.80	174.50	3,950.43	-1,811.16	109.01	1,814.21	2.07	-1.97	-0.66	
5,468.00	89.10	175.10	3,951.56	-1,872.89	114.63	1,876.13	1.08	0.48	0.97	
5,529.00	89.80	174.80	3,952.15	-1,933.65	120.00	1,937.07	1.25	1.15	-0.49	
5,591.00	90.70	174.50	3,951.88	-1,995.38	125.78	1,999.00	1.53	1.45	-0.48	
5,591.66	90.71	174.50	3,951.87	-1,996.04	125.84	1,999.65	0.94	0.81	-0.48	
Feedlot 22 1H 2000' VS (10.1)										
5,653.00	91.20	174.20	3,950.85	-2,057.07	131.88	2,060.90	0.94	0.81	-0.48	
5,714.00	89.60	173.90	3,950.42	-2,117.74	138.20	2,121.78	2.67	-2.62	-0.49	



Company:	Unit Petroleum	Local Co-ordinate Reference:	Well Feedlot 22 #1H
Project:	Reno County, Kansas [NAD 83]	TVD Reference:	14' KB @ 1769.00usft (UDI 331)
Site:	Section 15 T25S-R10W	MD Reference:	14' KB @ 1769.00usft (UDI 331)
Well:	Feedlot 22 #1H	North Reference:	Grid
Wellbore:	OH	Survey Calculation Method:	Minimum Curvature
Design:	OH	Database:	EDM 5000.1 Single User Db

Survey

Measured Depth (usft)	Inclination (°)	Azimuth (°)	Vertical Depth (usft)	+N/-S (usft)	+E/-W (usft)	Vertical Section (usft)	Dogleg Rate (°/100usft)	Build Rate (°/100usft)	Turn Rate (°/100usft)
5,776.00	89.70	173.60	3,950.80	-2,179.37	144.95	2,183.65	0.51	0.16	-0.48
5,837.00	90.20	174.10	3,950.85	-2,240.02	151.49	2,244.53	1.16	0.82	0.82
5,899.00	89.40	174.20	3,951.07	-2,301.70	157.81	2,306.43	1.30	-1.29	0.16
5,960.00	89.80	173.90	3,951.50	-2,362.37	164.13	2,367.32	0.82	0.66	-0.49
6,022.00	89.90	174.50	3,951.66	-2,424.05	170.40	2,429.22	0.98	0.16	0.97
6,083.00	90.50	174.40	3,951.45	-2,484.76	176.30	2,490.13	1.00	0.98	-0.16
6,144.00	89.40	174.20	3,951.50	-2,545.46	182.36	2,551.04	1.83	-1.80	-0.33
6,205.00	89.60	174.10	3,952.03	-2,606.14	188.57	2,611.93	0.37	0.33	-0.16
6,266.00	90.10	173.80	3,952.19	-2,666.80	195.00	2,672.82	0.96	0.82	-0.49
6,328.00	89.40	173.90	3,952.46	-2,728.44	201.64	2,734.69	1.14	-1.13	0.16
6,389.00	89.80	172.90	3,952.89	-2,789.03	208.65	2,795.54	1.77	0.66	-1.64
6,451.00	90.20	173.40	3,952.89	-2,850.59	216.05	2,857.36	1.03	0.65	0.81
6,513.00	89.10	173.30	3,953.27	-2,912.17	223.23	2,919.20	1.78	-1.77	-0.16
6,577.00	89.70	172.60	3,953.94	-2,975.68	231.08	2,983.00	1.44	0.94	-1.09
6,590.93	89.70	172.69	3,954.01	-2,989.50	232.87	2,996.88	0.62	0.00	0.63
Feedlot 22 1H 3000' VS (10.1)									
6,641.00	89.70	173.00	3,954.27	-3,039.18	239.10	3,046.79	0.62	0.00	0.63
6,705.00	89.80	173.10	3,954.55	-3,102.71	246.85	3,110.59	0.22	0.16	0.16
6,767.00	89.90	172.80	3,954.71	-3,164.24	254.46	3,172.40	0.51	0.16	-0.48
6,831.00	89.90	172.70	3,954.83	-3,227.73	262.54	3,236.19	0.16	0.00	-0.16
6,893.00	89.80	172.40	3,954.99	-3,289.20	270.57	3,297.96	0.51	-0.16	-0.48
6,956.00	90.20	172.60	3,954.99	-3,351.66	278.80	3,360.72	0.71	0.63	0.32
7,019.00	88.80	172.20	3,955.54	-3,414.11	287.13	3,423.47	2.31	-2.22	-0.63
7,082.00	88.10	172.30	3,957.24	-3,476.51	295.62	3,486.19	1.12	-1.11	0.16
7,144.00	88.10	170.80	3,959.30	-3,537.80	304.73	3,547.82	2.42	0.00	-2.42
7,208.00	87.70	170.90	3,961.64	-3,600.94	314.90	3,611.35	0.64	-0.63	0.16
7,273.00	87.70	170.80	3,964.25	-3,665.06	325.22	3,675.87	0.15	0.00	-0.15
7,336.00	88.10	170.60	3,966.56	-3,727.19	335.40	3,738.39	0.71	0.63	-0.32
7,400.00	87.80	169.00	3,968.85	-3,790.14	346.72	3,801.78	2.54	-0.47	-2.50
7,463.00	88.50	168.90	3,970.88	-3,851.94	358.79	3,864.05	1.12	1.11	-0.16
7,527.00	89.50	169.30	3,972.00	-3,914.77	370.89	3,927.36	1.68	1.56	0.63
7,582.82	89.77	168.24	3,972.36	-3,969.52	381.76	3,982.53	1.96	0.48	-1.90
Feedlot 22 1H 4000' VS (10.1)									
7,590.00	89.80	168.10	3,972.38	-3,976.55	383.24	3,989.62	1.96	0.48	-1.90
7,654.00	90.00	168.00	3,972.50	-4,039.16	396.49	4,052.76	0.35	0.31	-0.16
7,719.00	90.10	167.70	3,972.44	-4,102.71	410.17	4,116.85	0.49	0.15	-0.46
7,781.00	91.30	166.20	3,971.68	-4,163.10	424.17	4,177.80	3.10	1.94	-2.42
7,845.00	91.20	166.00	3,970.29	-4,225.21	439.54	4,240.53	0.35	-0.16	-0.31
7,908.00	91.20	165.60	3,968.97	-4,286.27	454.99	4,302.21	0.63	0.00	-0.63
7,972.00	91.60	165.50	3,967.40	-4,348.23	470.96	4,364.82	0.64	0.63	-0.16
8,035.00	91.70	165.20	3,965.59	-4,409.15	486.88	4,426.39	0.50	0.16	-0.48
8,099.00	92.20	164.70	3,963.41	-4,470.92	503.49	4,488.83	1.10	0.78	-0.78
8,162.00	90.60	164.20	3,961.87	-4,531.60	520.37	4,550.19	2.66	-2.54	-0.79



Company:	Unit Petroleum	Local Co-ordinate Reference:	Well Feedlot 22 #1H
Project:	Reno County, Kansas [NAD 83]	TVD Reference:	14' KB @ 1769.00usft (UDI 331)
Site:	Section 15 T25S-R10W	MD Reference:	14' KB @ 1769.00usft (UDI 331)
Well:	Feedlot 22 #1H	North Reference:	Grid
Wellbore:	OH	Survey Calculation Method:	Minimum Curvature
Design:	OH	Database:	EDM 5000.1 Single User Db

Survey										
Measured Depth (usft)	Inclination (°)	Azimuth (°)	Vertical Depth (usft)	+N/-S (usft)	+E/-W (usft)	Vertical Section (usft)	Dogleg Rate (°/100usft)	Build Rate (°/100usft)	Turn Rate (°/100usft)	
8,226.00	91.30	164.30	3,960.81	-4,593.18	537.74	4,612.49	1.10	1.09	0.16	
8,289.00	90.00	164.30	3,960.10	-4,653.83	554.79	4,673.83	2.06	-2.06	0.00	
8,353.00	90.20	164.40	3,959.98	-4,715.46	572.05	4,736.16	0.35	0.31	0.16	
8,417.00	90.60	164.00	3,959.54	-4,777.04	589.48	4,798.45	0.88	0.63	-0.63	
8,479.00	91.30	164.50	3,958.51	-4,836.70	606.31	4,858.80	1.39	1.13	0.81	
8,542.00	89.20	164.90	3,958.23	-4,897.46	622.93	4,920.24	3.39	-3.33	0.63	
8,606.00	89.80	165.10	3,958.79	-4,959.28	639.49	4,982.73	0.99	0.94	0.31	
8,668.00	90.50	165.20	3,958.63	-5,019.21	655.38	5,043.31	1.14	1.13	0.16	
8,732.00	90.60	164.00	3,958.02	-5,080.91	672.38	5,105.70	1.88	0.16	-1.88	
8,735.95	90.65	164.01	3,957.97	-5,084.70	673.47	5,109.54	1.27	1.23	0.31	
Feedlot 22 1H PBHL (10.1)										
8,797.00	91.40	164.20	3,956.88	-5,143.41	690.18	5,168.93	1.27	1.23	0.31	
Last MWD Survey										
8,841.00	91.40	164.20	3,955.81	-5,185.73	702.16	5,211.74	0.00	0.00	0.00	
Projection to TD										

Design Annotations					
Measured Depth (usft)	Vertical Depth (usft)	Local Coordinates		Comment	
		+N/-S (usft)	+E/-W (usft)		
8,797.00	3,956.88	-5,143.41	690.18	Last MWD Survey	
8,841.00	3,955.81	-5,185.73	702.16	Projection to TD	

Checked By: _____ Approved By: _____ Date: _____