

JAMES C. MUSGROVE

Petroleum Geologist, LLC
212 Main Street
P.O. Box 215
Claflin, KS 67525

Office (620) 588-4250

Res. Claflin (620) 587-3444

Mai Oil Operations
Mueller 'I' #7
W/2-SW-SE-SE (330' FSL & 1010' FEL)
Section 29-21s-12w
Stafford County, Kansas

Page 1

5 1/2" Production Casing Set

Contractor: Southwind Drilling Co. (rig #3)
Commenced: August 21, 2014
Completed: August 28, 2014
Elevation: 1864' K.B., 1862' D.F., 1856' G.L.
Casing program: Surface; 8 5/8" @ 641'
Production, 5 1/2 @ 3699'
Sample: Samples saved and examined 2100' to the Rotary Total Depth.
Drilling time: One (1) foot drilling time recorded and kept 2100 ft. to the Rotary Total Depth.
Measurements: All depths measured from the Kelly Bushing.
Drill Stem Tests: There were six (6) Drill Stem Tests ran by Diamond Testing Co.
Electric Log: By Nabors; Dual Induction, Compensated Density/Neutron; Micro and Sonic.

<u>Formation</u>	<u>Log Depth</u>	<u>Sub-Sea Datum</u>
Anhydrite	647	+1217
Base Anhydrite	669	+1195
Red Eagle	2228	-364
Tarkio	2516	-652
Topeka	2825	-961
Heebner	3110	-1246
Toronto	3128	-1264
Douglas	3143	-1279
Brown Lime	3243	-1379
Lansing	3249	-1385
Base Kansas City	3483	-1619
Viola	3496	-1632
Simpson Shale	3533	-1669
Arbuckle	3585	-1721
Rotary Total Depth	3700	-1836
Log Total Depth	3698	-1834

All tops and zones corrected to Electric Log Measurement.

Mai Oil Operations
Mueller '1' #7
W/2-SW-SE-SE (330' FSL & 1010' FEL)
Section 29-21s-12w
Stafford County, Kansas

Page 2

SAMPLE ANALYSIS, SHOWS OF OIL, TESTING DATA, ETC.

RED EAGLE SECTION

2230-2247' Limestone, white, cream, finely oomoldic, few fossiliferous, scattered porosity, no stain, no free oil, trace gas bubbles (20 unit gas kick)

Drill Stem Test #1 2235-2250'

Times: 30-30-45-60

**Blow: Strong, gas to surface
30 mins. into FFP, T.S.T.M.**

Gas gauged as follows:

15 minutes	10,030 @ fgpd
20 minutes	11,150 @ fgpd
30 minutes	15,650 @ fgpd
40 minutes	20,510 @ fgpd
45 minutes	24,250 @ fgpd

Recovery: 335' gassy water

Pressures:	ISIP 762	psi
	FSIP 774	psi
	IFP 38-97	psi
	FFP 75-195	psi
	HSH 1083-1064	psi

TORONTO SECTION

3128-3142' Limestone, white, gray, finely crystalline, chalky, trace brown stain, no free oil and no odor, trace with sucrosic dolomitic limestone at base, spotty stain, no free oil and no odor.

LANSING SECTION

3249-3260' Limestone, white, finely crystalline, fossiliferous in part, gray to black and brown stain, no show of free oil and no odor.

3273-3280' Limestone, white, gray, finely crystalline, oolitic, gray and black stain, trace gray/brown and black stain, trace of free oil and faint odor in fresh samples.

Mai Oil Operations
 Mueller 'I' #7
 W/2-SW-SE-SE (330' FSL & 1010' FEL)
 Section 29-21s-12w
 Stafford County, Kansas

Page 3

3292-3300' Limestone, gray, white, fossiliferous, chalky, trace gray/brown and black stain, trace of free oil and faint odor in fresh samples.

3314-3318' Limestone, gray, white, finely crystalline, few oolitic, chalky, poor stain; trace of free oil and no odor in fresh samples

Drill Stem Test #2

3250-3326

Times: 30-30-45-60

Blow: Strong

**Recovery: 1400' gas in pipe
 45' slightly oil cut mud
 (4% oil; 96% mud)**

**Pressures: ISIP 293 psi
 FSIP 386 psi
 IFP 22-23 psi
 FFP 45-48 psi
 HSH 1584-1568 psi**

3326-3331' Limestone, tan, sub-oomoldic, chalky, few cherty poor visible porosity, poor brown stain, no show of free oil and no odor.

3340-3347' Limestone, as above.

3350-3380' Limestone, white, gray, finely crystalline, chalky, few cherty, plus gray chert.

3385-3392' Limestone, white, oolitic, finely oomoldic, fair oomoldic porosity, trace black stain, no free oil and no odor.

3400-3410' Limestone, ray, finely crystalline; few with scattered vuggy porosity, brown and black stain, no free oil and no odor in fresh samples.

3420-3427' Limestone, gray, white, oomoldic, fair oomoldic porosity, poor stain, no free oil and no odor.

3440-3446' Limestone, gray, cream, oolitic, chalky, brown and black stain, no free oil and no odor.

3462-3480' Limestone, as above, poor porosity, questionable stain, no free oil and no odor.

Mai Oil Operations
Mueller 'I' #7
W/2-SW-SE-SE (330' FSL & 1010' FEL)
Section 29-21s-12w
Stafford County, Kansas

Page 4

Drill Stem Test #3 **3383-3481**

Times: 30-30-45-45
Blow: Good
Recovery: 210' gas in pipe
90' very slightly oil cut mud
63' oil and gas cut muddy water
(1% oil; 99% mud)
Pressures: ISIP 366 psi
FSIP 247 psi
IFP 20-33 psi
FFP 37-60 psi
HSH 1664-1618 psi

VIOLA SECTION

3496-3530' Chert, white, cream, brown, fresh; few weathered brown, black stain, weak show of free oil and odor in fresh samples.

Drill Stem Test #4 **3476-3531**

Times: 30-30-30-45
Blow: Weak
Recovery: 10' mud
Pressures: ISIP 43 psi
FSIP 45 psi
IFP 15-18 psi
FFP 15-20 psi
HSH 1780-1705 psi

SIMPSON SECTION

3578-3584' Sand, clear, quartzitic, sub-rounded friable, fair inter-granular porosity, trace brown stain, trace free oil and faint odor in fresh samples.

ARBUCKLE SECTION

3585-3603' Dolomite, tan, cream finely crystalline, sucrosic, scattered vuggy porosity, fair stain and saturation, show free oil and faint odor in fresh samples.

Mai Oil Operations
 Mueller 'I' #7
 W/2-SW-SE-SE (330' FSL & 1010' FEL)
 Section 29-21s-12w
 Stafford County, Kansas

Page 5

Drill Stem Test #5 **3528-3603**

Times: 30-30-30-30

Blow: Weak

Recovery: 64' slightly oil and gas cut mud
 (15% gas; 5% oil, 80% mud)

Pressures:

ISIP	1058	psi
FSIP	1063	psi
IFP	15-30	psi
FFP	33-43	psi
HSH	1755-1730	psi

3603-3618' Dolomite, tan, fine and medium crystalline, good inter-crystalline/vuggy porosity, sucrosic in part, fair to good stain and saturation, good show of free oil and fair to good odor in fresh samples.

Drill Stem Test #6 **3603-3618**

Times: 30-30-30-30

Blow: Strong

Recovery: 2790' gas cut muddy water

Pressures:

ISIP	1229	psi
FSIP	1230	psi
IFP	483-1102	psi
FFP	1116-1227	psi
HSH	1743-1712	psi

3618-3640' Dolomite, as above, fair porosity, brown stain, show of free oil and fair odor in fresh samples.

3640-3660' Dolomite, tan, finely crystalline, few medium crystalline, fair to good stain, show of free oil and fair odor in fresh samples.

3660-3680' Dolomite, as above; gray and brown stain, no free oil and fair odor in fresh samples.

3680-3690' Dolomite, as above, plus white chert.

3690-3700' Dolomite, white, gray, finely crystalline, fair porosity, black and gray stain, no free oil and fair odor in fresh samples.

Mai Oil Operations
Mueller 'I' #7
W/2-SW-SE-SE (330' FSL & 1010' FEL)
Section 29-21s-12w
Stafford County, Kansas

Page 6

Rotary Total Depth	3700
Log Total Depth	3698

Recommendations:

5 1/2" production casing set and cemented on the Mai Oil Operations Inc., Mueller 'I' #7.

Respectfully yours,

James C. Musgrove

James C. Musgrove
Petroleum Geologist





TRILOBITE TESTING, INC.

DRILL STEM TEST REPORT

Mai Oil Oper. Inc.
8411 Preston Rd. Ste. 800
Dallas, TX 75225-5520
ATTN: Jim Musgrove

29-21s-12w Stafford,KS
Mueller "I" #7
Job Ticket: 54170 **DST#: 1**
Test Start: 2014.08.23 @ 11:35:39

GENERAL INFORMATION:

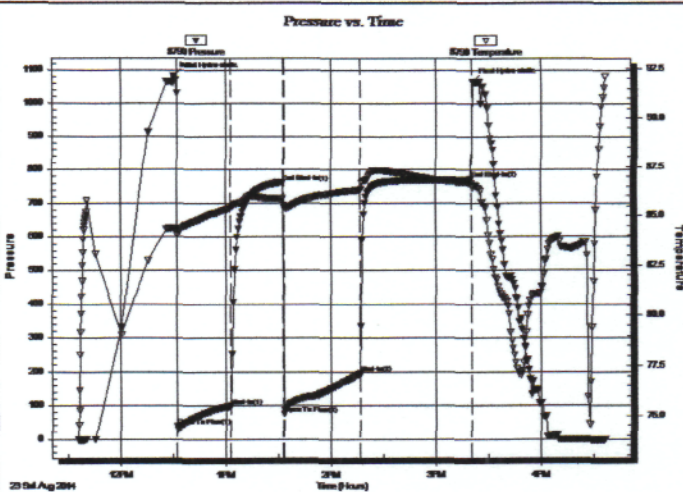
Formation: **Red Eagle**
Deviated: **No** Whipstock: ft (KB)
Time Tool Opened: 12:32:09
Time Test Ended: 16:36:54
Interval: **2235.00 ft (KB) To 2250.00 ft (KB) (TVD)**
Total Depth: **2250.00 ft (KB) (TVD)**
Hole Diameter: **7.88 inches** Hole Condition: Fair
Test Type: **Conventional Bottom Hole (Initial)**
Tester: **Ryan Reynolds**
Unit No: **68**
Reference Elevations: **1868.00 ft (KB)**
1860.00 ft (CF)
KB to GR/CF: **8.00 ft**

Serial #: 8790

Inside

Press@RunDepth: 194.82 psig @ 2236.00 ft (KB) Capacity: 8000.00 psig
Start Date: 2014.08.23 End Date: 2014.08.23 Last Calib.: 2014.08.23
Start Time: 11:35:44 End Time: 16:36:53 Time On Btm: 2014.08.23 @ 12:30:09
Time Off Btm: 2014.08.23 @ 15:20:39

TEST COMMENT: F: Strong blow . BOB @ 1 1/2 min.
IS: Weak 2" BB
FF: Strong blow . BOB immed. GTS @ 13min. Gauged gas.
FS: Fair 4" BB



PRESSURE SUMMARY

Time (Min.)	Pressure (psig)	Temp (deg F)	Annotation
0	1082.95	84.40	Initial Hydro-static
2	37.64	84.04	Open To Flow (1)
33	97.07	85.38	Shut-In(1)
63	762.46	85.86	End Shut-In(1)
63	75.49	85.51	Open To Flow (2)
107	194.82	86.29	Shut-In(2)
170	773.67	86.64	End Shut-In(2)
171	1064.33	86.42	Final Hydro-static

Recovery

Length (ft)	Description	Volume (bbl)
335.00	GMCW 2%g, 5%m, 93%w	3.64

Gas Rates

	Choke (inches)	Pressure (psig)	Gas Rate (Mcf/d)
First Gas Rate	0.13	12.00	10.03
Last Gas Rate	0.13	50.00	24.25
Max. Gas Rate	0.13	50.00	24.25



TRILOBITE TESTING, INC.

DRILL STEM TEST REPORT

Mai Oil Oper. Inc.
 8411 Preston Rd. Ste. 800
 Dallas, TX 75225-5520
 ATTN: Jim Musgrove

29-21s-12w Stafford, KS
Mueller "I" #7
 Job Ticket: 54171 **DST#: 2**
 Test Start: 2014.08.25 @ 06:38:03

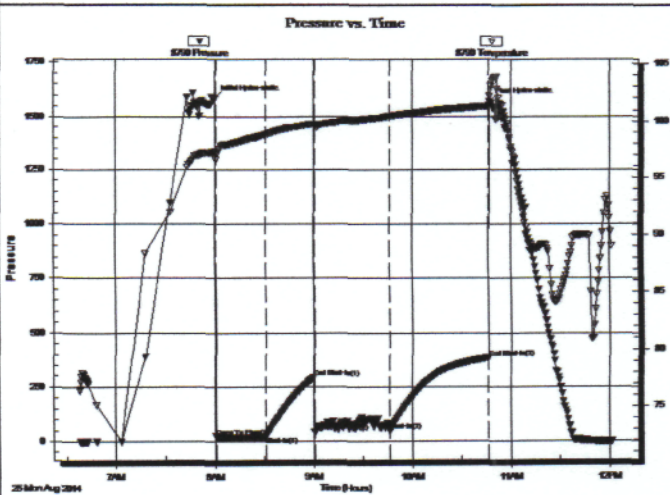
GENERAL INFORMATION:

Formation: LKC. A - D	Test Type: Conventional Bottom Hole (Reset)
Deviated: No Whipstock: ft (KB)	Tester: Ryan Reynolds
Time Tool Opened: 08:01:03	Unit No: 68
Time Test Ended: 12:01:48	Reference Elevations: 1868.00 ft (KB)
Interval: 3250.00 ft (KB) To 3326.00 ft (KB) (TVD)	1860.00 ft (CF)
Total Depth: 3326.00 ft (KB) (TVD)	KB to GRV/CF: 8.00 ft
Hole Diameter: 7.88 inches Hole Condition: Fair	

Serial #: 8790 Inside

Press@RunDepth: 48.40 psig @ 3253.50 ft (KB)	Capacity: 8000.00 psig
Start Date: 2014.08.25 End Date: 2014.08.25	Last Calib.: 2014.08.25
Start Time: 06:38:08 End Time: 12:01:47	Time On Btm: 2014.08.25 @ 08:00:18
	Time Off Btm: 2014.08.25 @ 10:47:03

TEST COMMENT: **F: Strong blow . BOB @ 8 min.**
IS: No blow
FF: Strong blow . BOB immed. No GTS.
FS: No blow



PRESSURE SUMMARY

Time (Min.)	Pressure (psig)	Temp (deg F)	Annotation
0	1583.78	97.26	Initial Hydro-static
1	22.23	96.96	Open To Flow (1)
31	22.99	98.79	Shut-In(1)
60	293.27	99.72	End Shut-In(1)
61	45.34	99.59	Open To Flow (2)
107	48.40	100.45	Shut-In(2)
167	385.80	101.33	End Shut-In(2)
167	1568.35	102.15	Final Hydro-static

Recovery

Length (ft)	Description	Volume (bbl)
45.00	OCM 4%o, 96%rn	0.63
0.00	1400' GIP	0.00

* Recovery from multiple tests

Gas Rates

Choke (inches)	Pressure (psig)	Gas Rate (Mcf/d)



TRILOBITE TESTING, INC.

DRILL STEM TEST REPORT

Mai Oil Oper. Inc.
 8411 Preston Rd. Ste. 800
 Dallas, TX 75225-5520
 ATTN: Jim Musgrove

29-21s-12w Stafford, KS
Mueller "I" #7
 Job Ticket: 54172 **DST#: 3**
 Test Start: 2014.08.26 @ 04:29:20

GENERAL INFORMATION:

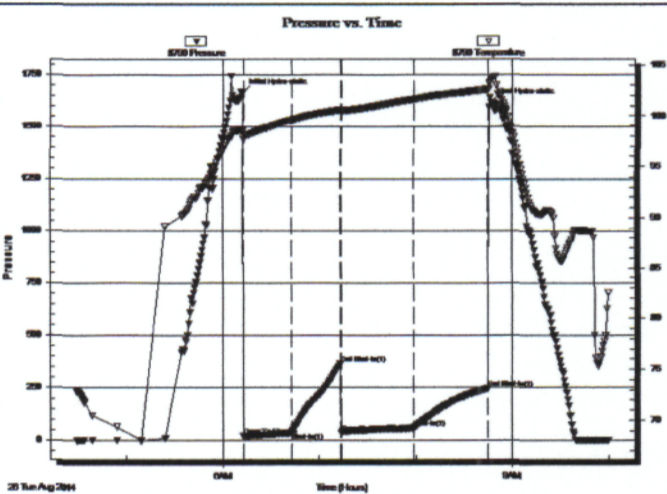
Formation: **LKC H - L**
 Deviated: No Whipstock: ft (KB)
 Time Tool Opened: 06:12:50
 Time Test Ended: 09:59:50
 Interval: **3383.00 ft (KB) To 3481.00 ft (KB) (TVD)**
 Total Depth: 3481.00 ft (KB) (TVD)
 Hole Diameter: 7.88 inches Hole Condition: Fair
 Test Type: Conventional Bottom Hole (Reset)
 Tester: Ryan Reynolds
 Unit No: 68
 Reference Elevations: 1868.00 ft (KB)
 1860.00 ft (CF)
 KB to GR/CF: 8.00 ft

Serial #: 8790

Inside

Press@RunDepth: 59.77 psig @ 3388.50 ft (KB) Capacity: 8000.00 psig
 Start Date: 2014.08.26 End Date: 2014.08.26 Last Calib.: 2014.08.26
 Start Time: 04:29:25 End Time: 09:59:49 Time On Btmr: 2014.08.26 @ 06:12:35
 Time Off Btmr: 2014.08.26 @ 08:46:20

TEST COMMENT: F: Good blow . 1" - 9"
 IS: No blow .
 FF: Fair blow . 1" - 5"
 FS: No blow



PRESSURE SUMMARY

Time (Min.)	Pressure (psig)	Temp (deg F)	Annotation
0	1663.89	98.52	Initial Hydro-static
1	20.18	97.67	Open To Flow (1)
30	33.31	99.59	Shut-In(1)
61	366.31	100.60	End Shut-In(1)
61	36.75	100.47	Open To Flow (2)
106	59.77	101.63	Shut-In(2)
153	247.18	102.63	End Shut-In(2)
154	1618.23	103.49	Final Hydro-static

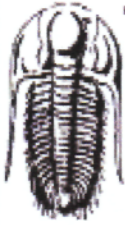
Recovery

Length (ft)	Description	Volume (bbl)
90.00	VSLI OCM 1%o, 99% m	1.26
0.00	210' GP	0.00

* Recovery from multiple tests

Gas Rates

	Choke (inches)	Pressure (psig)	Gas Rate (Mcf/d)



TRILOBITE TESTING, INC.

DRILL STEM TEST REPORT

Mai Oil Oper. Inc.
 8411 Preston Rd. Ste. 800
 Dallas, TX 75225-5520
 ATTN: Jim Musgrove

29-21s-12w Stafford,KS
Mueller "1" #7
 Job Ticket: 54173 **DST#: 4**
 Test Start: 2014.08.26 @ 16:10:12

GENERAL INFORMATION:

Formation: **Viola**
 Deviated: No Whipstock: ft (KB)
 Time Tool Opened: 17:31:12
 Time Test Ended: 20:59:12
 Interval: **3475.00 ft (KB) To 3531.00 ft (KB) (TVD)**
 Total Depth: 3531.00 ft (KB) (TVD)
 Hole Diameter: 7.88 inches Hole Condition: Fair

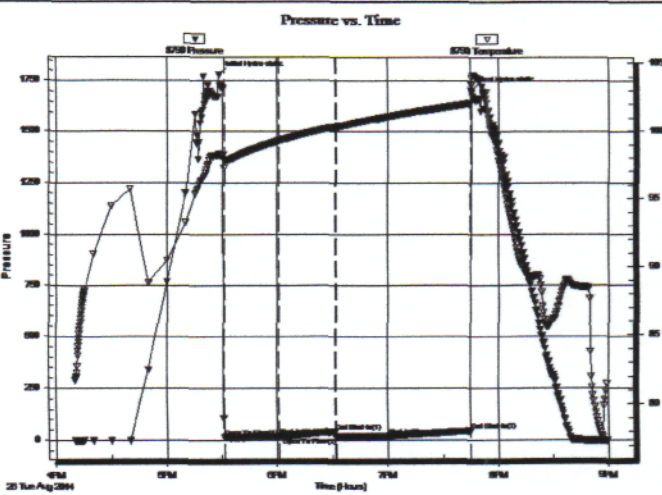
Test Type: Conventional Bottom Hole (Reset)
 Tester: Ryan Reynolds
 Unit No: 68
 Reference Elevations: 1868.00 ft (KB)
 1860.00 ft (CF)
 KB to GR/CF: 8.00 ft

Serial #: 8790

Inside

Press@RunDepth: 20.19 psig @ 3480.00 ft (KB)
 Start Date: 2014.08.26 End Date: 2014.08.26
 Start Time: 16:10:17 End Time: 20:59:11
 Capacity: 8000.00 psig
 Last Calib.: 2014.08.26
 Time On Btrn: 2014.08.26 @ 17:28:27
 Time Off Btrn: 2014.08.26 @ 19:45:12

TEST COMMENT: F: Weak surface blow.
 IS: No blow
 FF: Weak blow . surf. - Dead @ 20 min.
 FS: No blow



PRESSURE SUMMARY

Time (Min.)	Pressure (psig)	Temp (deg F)	Annotation
0	1779.99	98.26	Initial Hydro-static
3	15.35	97.71	Open To Flow (1)
33	18.11	99.28	Shut-in(1)
63	42.73	100.29	End Shut-in(1)
64	15.00	100.29	Open To Flow (2)
92	20.19	101.10	Shut-in(2)
137	44.52	102.07	End Shut-in(2)
137	1705.07	103.38	Final Hydro-static

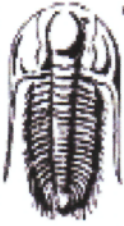
Recovery

Length (ft)	Description	Volume (bbl)
10.00	Drig mud 100% <i>m</i>	0.14

* Recovery from multiple tests

Gas Rates

Choke (inches)	Pressure (psig)	Gas Rate (Mcf/d)



TRILOBITE TESTING, INC.

DRILL STEM TEST REPORT

Mai Oil Oper. Inc.
 8411 Preston Rd. Ste. 800
 Dallas, TX 75225-5520
 ATTN: Jim Musgrove

29-21s-12w Stafford,KS
Mueller "I" #7
 Job Ticket: 54174 **DST#: 5**
 Test Start: 2014.08.27 @ 07:01:46

GENERAL INFORMATION:

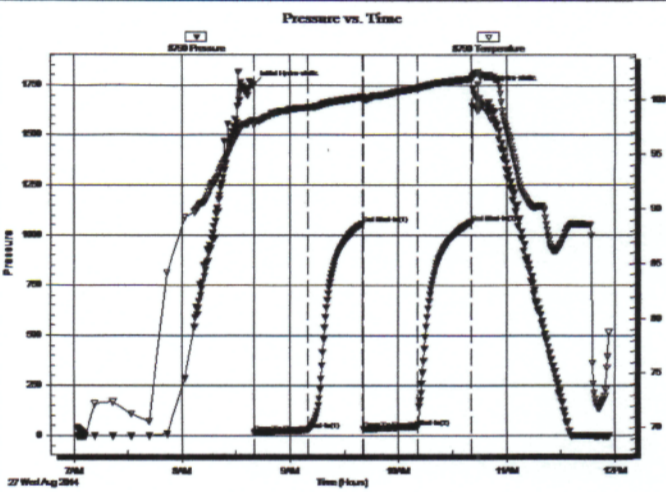
Formation: **Arbuckle**
 Deviated: No Whipstock: ft (KB)
 Time Tool Opened: 08:40:16
 Time Test Ended: 11:56:46
 Interval: **3528.00 ft (KB) To 3603.00 ft (KB) (TVD)**
 Total Depth: 3603.00 ft (KB) (TVD)
 Hole Diameter: 7.88 inches Hole Condition: Fair
 Test Type: Conventional Bottom Hole (Reset)
 Tester: Ryan Reynolds
 Unit No: 68
 Reference Elevations: 1868.00 ft (KB)
 1860.00 ft (CF)
 KB to GR/CF: 8.00 ft

Serial #: 8790

Inside

Press@RunDepth: 43.38 psig @ 3530.50 ft (KB)
 Start Date: 2014.08.27 End Date: 2014.08.27
 Start Time: 07:01:51 End Time: 11:56:45
 Capacity: 8000.00 psig
 Last Calib.: 2014.08.27
 Time On Btrm: 2014.08.27 @ 08:40:01
 Time Off Btrm: 2014.08.27 @ 10:41:16

TEST COMMENT: F: Weak surface blow.
 IS: No blow
 FF: Weak surface blow.
 FS: No blow



PRESSURE SUMMARY

Time (Min.)	Pressure (psig)	Temp (deg F)	Annotation
0	1755.29	98.24	Initial Hydro-static
1	14.91	97.72	Open To Flow (1)
30	29.80	99.39	Shut-in(1)
60	1057.59	100.35	End Shut-in(1)
61	33.31	99.96	Open To Flow (2)
91	43.38	101.14	Shut-in(2)
121	1063.22	102.02	End Shut-in(2)
122	1730.29	102.24	Final Hydro-static

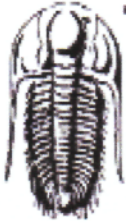
Recovery

Length (ft)	Description	Volume (bbl)
64.00	OGCM 5%o, 15%g, 80%m	0.90

* Recovery from multiple tests

Gas Rates

	Choke (inches)	Pressure (psig)	Gas Rate (Mcf/d)



TRILOBITE TESTING, INC

DRILL STEM TEST REPORT

Mai Oil Oper. Inc.
 8411 Preston Rd. Ste. 800
 Dallas, TX 75225-5520
 ATTN: Jim Musgrove

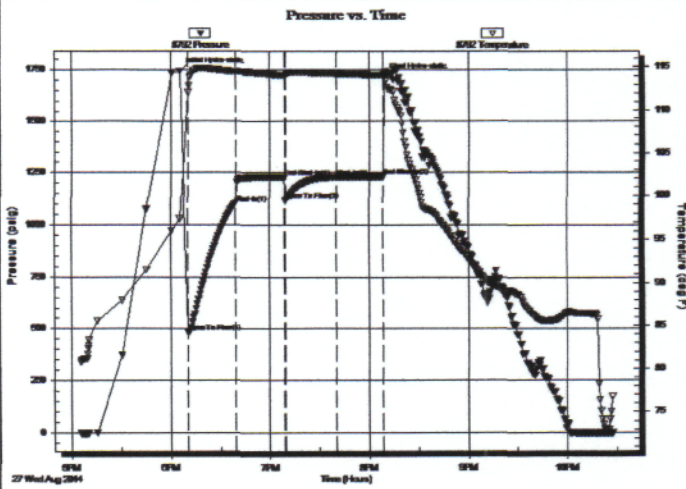
29-21s-12w Stafford,KS
Mueller "I" #7
 Job Ticket: 54175 **DST#: 6**
 Test Start: 2014.08.27 @ 17:05:30

GENERAL INFORMATION:

Formation: **Arbuckle**
 Deviated: No Whipstock: ft (KB)
 Time Tool Opened: 18:10:30
 Time Test Ended: 22:27:30
 Interval: **3603.00 ft (KB) To 3618.00 ft (KB) (TVD)**
 Total Depth: 3618.00 ft (KB) (TVD)
 Hole Diameter: 7.88 inches Hole Condition: Fair
 Test Type: Conventional Bottom Hole (Reset)
 Tester: Ryan Reynolds
 Unit No: 68
 Reference Elevations: 1868.00 ft (KB)
 1860.00 ft (CF)
 KB to GR/CF: 8.00 ft

Serial #: 8792 Outside
 Press@RunDepth: 1227.26 psig @ 3604.00 ft (KB) Capacity: 8000.00 psig
 Start Date: 2014.08.27 End Date: 2014.08.27 Last Calib.: 2014.08.27
 Start Time: 17:05:35 End Time: 22:27:29 Time On Btm: 2014.08.27 @ 18:05:30
 Time Off Btm: 2014.08.27 @ 20:09:15

TEST COMMENT: F: Strong blow . BOB @ 30 sec.
 IS: No blow
 FF: Strong blow . BOB @ 1min. died to 3"
 FSI: No blow



PRESSURE SUMMARY

Time (Min.)	Pressure (psig)	Temp (deg F)	Annotation
0	1743.06	97.34	Initial Hydro-static
5	483.03	112.05	Open To Flow (1)
34	1102.43	114.46	Shut-In(1)
63	1228.51	114.06	End Shut-In(1)
64	1116.16	114.04	Open To Flow (2)
95	1227.26	114.25	Shut-In(2)
123	1229.73	114.06	End Shut-In(2)
124	1712.61	114.18	Final Hydro-static

Recovery

Length (ft)	Description	Volume (bbl)
2790.00	MGCW 4% <i>m</i> , 10% <i>g</i> , 86% <i>w</i>	39.14

* Recovery from multiple tests

Gas Rates

Choke (inches)	Pressure (psig)	Gas Rate (Mcf/d)

QUALITY OILWELL CEMENTING, INC.

Federal Tax I.D.# 20-2886107

Phone 785-483-2025

Home Office P.O. Box 32 Russell, KS 67665

No. 288

Cell 785-324-1041

Date 8-21-14	Sec. 29	Twp. 21	Range 12	County Stafford	State KS	On Location	Finish 8:00pm
--------------	---------	---------	----------	-----------------	----------	-------------	---------------

Location Great Bend, 11S, 5E, 7AS

Lease Mueller I	Well No. 7	Owner
Contractor Southwind #3		To Quality Oilwell Cementing, Inc. You are hereby requested to rent cementing equipment and furnish cementer and helper to assist owner or contractor to do work as listed.
Type Job Surface		
Hole Size 12 1/4	T.D. 641	Charge To Mai Oil
Csg. 8 5/8	Depth 642	Street
Tbg. Size	Depth	City State
Tool	Depth	The above was done to satisfaction and supervision of owner agent or contractor.
Cement Left in Csg. 20	Shoe Joint 20	Cement Amount Ordered 400 sx 6 1/4, 3% CC, 2% gel
Meas Line	Displace 39.2 bbl	

EQUIPMENT

Pumptrk 17	No.	Cementer	Common
		Helper Lonnie W	Poz. Mix
Bulktrk 19	No.	Driver	Gel.
		Driver Tylor	
Bulktrk P4	No.	Driver	Calcium
		Driver Travis	

JOB SERVICES & REMARKS

Remarks: Cement did circulate	Hulls
Rat Hole	Salt
Mouse Hole	Flowseal
Centralizers	Kol-Seal
Baskets	Mud CLR 48
D/V or Port Collar	CFL-117 or CD110 CAF 38
	Sand
	Handling
	Mileage

FLOAT EQUIPMENT

	Guide Shoe
	Centralizer
	Baskets
	AFU Inserts
	Float Shoe
	Latch Down

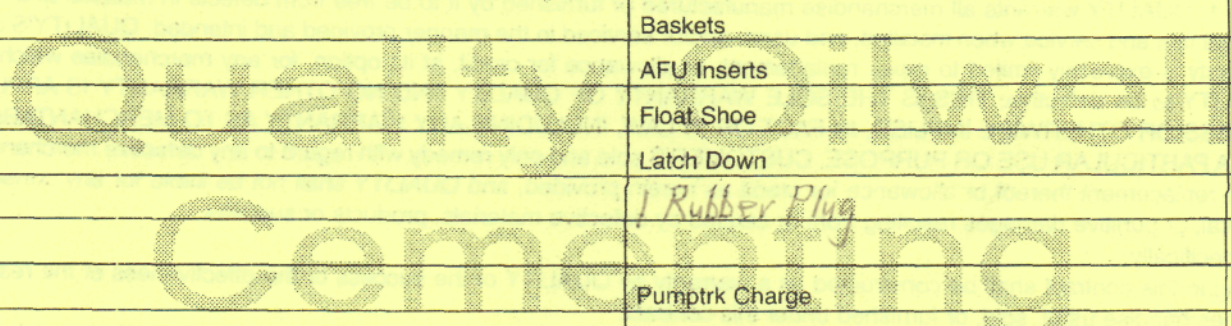
1 Rubber Plug

Pumptrk Charge

Mileage

Tax
Discount
Total Charge

X Signature *Andy Idrew*



QUALITY OILWELL CEMENTING, INC.

Federal Tax I.D.# 20-2886107

Phone 785-483-2025
Cell 785-324-1041

Home Office P.O. Box 32 Russell, KS 67665

No. 617

Date	8-28-14	Sec.	29	Twp.	21	Range	12	County	Stafford	State	Ks	On Location		Finish	11:15 PM
------	---------	------	----	------	----	-------	----	--------	----------	-------	----	-------------	--	--------	----------

Location: Great Bend, Ks - 11 S, SE, 7/8 S, W/5

Lease	Mueller "I"	Well No.	7	Owner	To Quality Oilwell Cementing, Inc. You are hereby requested to rent cementing equipment and furnish cementer and helper to assist owner or contractor to do work as listed.	
Contractor	Southwind #3				Charge To	Maui oil operations
Type Job	Production					
Hole Size	7 7/8"	T.D.	3700'			
Csg.	New 5 1/2" 14#	Depth	3696'			
Tbg. Size		Depth				
Tool		Depth		The above was done to satisfaction and supervision of owner agent or contractor.		
Cement Left in Csg.	20.80'	Shoe Joint	20.80'	Cement Amount Ordered	175 60/40 10% Salt 2% Gel	
Meas Line		Displace	89 1/2 Bcs	1/4# Fl-seal - 1000 gal Mud Clear 48		

EQUIPMENT

Pumptrk	16	No.	Cementer	Billy	Common
			Helper		
Bulktrk	14	No.	Driver	Jason Deeg	Poz. Mix
			Driver		
Bulktrk	7	No.	Driver	Rick	Gel.
			Driver		

JOB SERVICES & REMARKS

Remarks:		Hulls
Rat Hole		Salt
Mouse Hole		Flowseal
Centralizers	1-11, 13, 15	Kol-Seal
Baskets	pipe on bottom, break circulation	Mud CLR 48
D/V or Port Collar	pump 1000 gal mud clear 48	CFL-117 or CD110 CAF 38
	plug Rathole w/ 35% cement 5 1/2"	Sand
	Casing w/ 145' s. shut down w/	Handling
	pump + lines Released plug & Displaced	Mileage
	w/ 89 1/2 Bcs of water Released + held	
	Lift pressure 700 #	

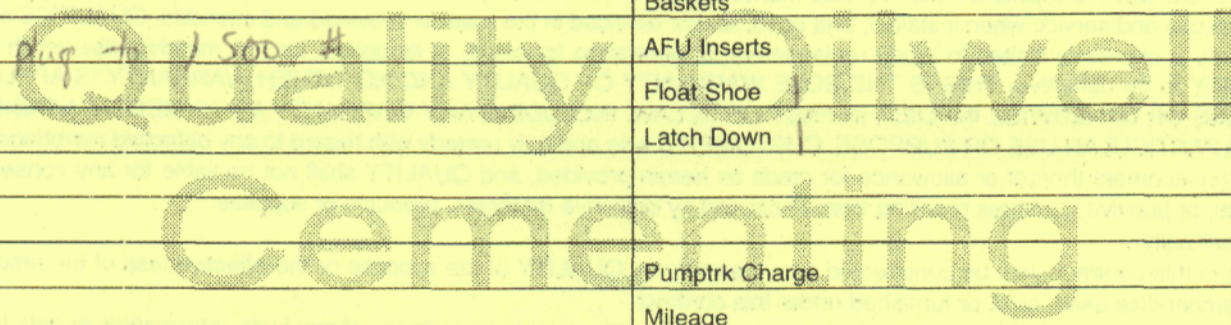
FLOAT EQUIPMENT

		Guide Shoe
		Centralizer 13 turbo's
		Baskets
		AFU Inserts
		Float Shoe
		Latch Down

		Pumptrk Charge
		Mileage

		Tax
		Discount
		Total Charge

X Signature



Land dug to 1500 #

[Handwritten Signature]