



TRILOBITE TESTING, INC

DRILL STEM TEST REPORT

Mai Oil Operations, Inc.
 8411 Preston Rd STE 800
 Dallas TX 75225-5520
 ATTN: Wyatt Urban

33-15s-13w Russell, KS
Sellens #4
 Job Ticket: 60461 **DST#: 1**
 Test Start: 2014.09.28 @ 15:27:00

GENERAL INFORMATION:

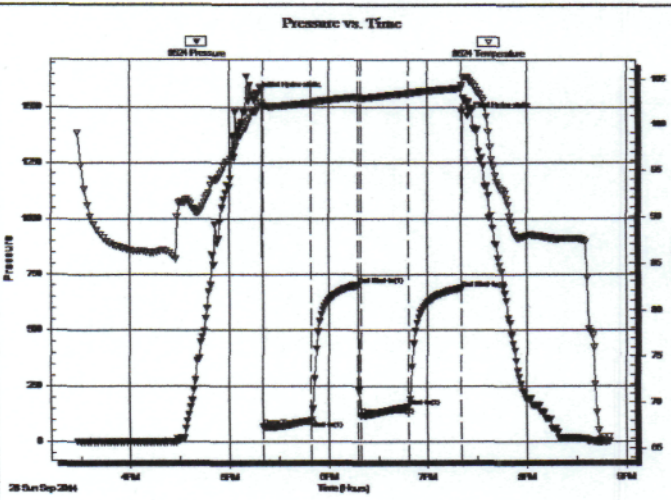
Formation: **LKC "A-C"**
 Deviated: **No Whipstock** ft (KB)
 Time Tool Opened: 17:20:30
 Time Test Ended: 20:49:30
 Test Type: **Conventional Bottom Hole (Initial)**
 Tester: **Shane Konzern**
 Unit No: **S3**
 Interval: **3095.00 ft (KB) To 3145.00 ft (KB) (TVD)**
 Total Depth: **3145.00 ft (KB) (TVD)**
 Hole Diameter: **7.88 inches** Hole Condition: **Poor**
 Reference Elevations: **1911.00 ft (KB)**
1903.00 ft (CF)
 KB to GR/CF: **8.00 ft**

Serial #: 8524

Inside

Press@RunDepth: **157.38 psig @ 3141.00 ft (KB)** Capacity: **8000.00 psig**
 Start Date: **2014.09.28** End Date: **2014.09.28** Last Calib.: **2014.09.28**
 Start Time: **15:28:00** End Time: **20:49:30** Time On Btm: **2014.09.28 @ 17:17:00**
 Time Off Btm: **2014.09.28 @ 19:24:00**

TEST COMMENT: **FP 30 BOB in 50 seconds.**
ISI 30 Weak surface blow back.
FFP 30 BOB in 1 minute and 30 seconds. GTS at 1 minutes and 30 seconds.
FSI 30 Weak surface blow back.



PRESSURE SUMMARY

Time (Min.)	Pressure (psig)	Temp (deg F)	Annotation
0	1550.21	101.57	Initial Hydro-static
4	69.44	102.03	Open To Flow (1)
33	96.29	102.31	Shut-in(1)
61	702.57	102.96	End Shut-in(1)
63	118.33	102.86	Open To Flow (2)
92	157.38	103.36	Shut-in(2)
123	686.32	103.93	End Shut-in(2)
127	1460.10	105.16	Final Hydro-static

Recovery

Length (ft)	Description	Volume (bbl)
335.00	100% Clean gassy oil	4.70
10.00	2.5% gas, 2.5% oil, 2.5% water, 92.5 mu.0.14	

Gas Rates

	Choke (inches)	Pressure (psig)	Gas Rate (Mcf/d)
First Gas Rate	0.13	0.00	5.39
Last Gas Rate	0.13	0.00	5.39
Max. Gas Rate	0.13	0.00	5.39



TRILOBITE TESTING, INC.

DRILL STEM TEST REPORT

Mai Oil Operations, Inc.
 8411 Preston Rd STE 800
 Dallas TX 75225-5520
 ATTN: Wyatt Urban

33-15s-13w Russell,KS
Sellens #4
 Job Ticket: 60461 DST#: 1
 Test Start: 2014.09.28 @ 15:27:00

GENERAL INFORMATION:

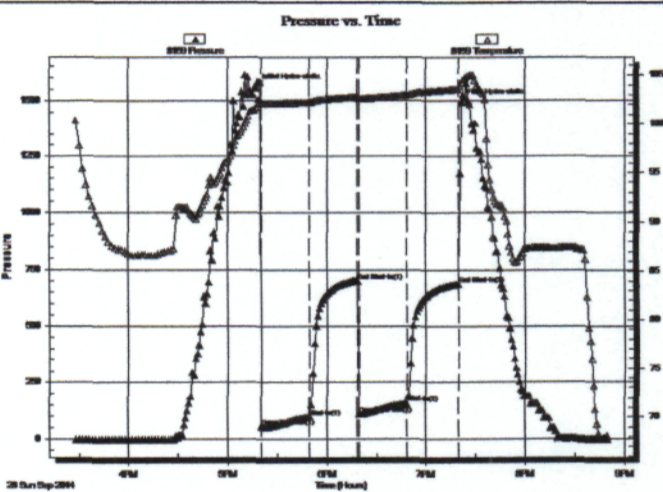
Formation: **LKC "A-C"**
 Deviated: No Whipstock: ft (KB)
 Time Tool Opened: 17:20:30
 Time Test Ended: 20:49:30
 Interval: **3095.00 ft (KB) To 3145.00 ft (KB) (TVD)**
 Total Depth: 3145.00 ft (KB) (TVD)
 Hole Diameter: 7.88 inches Hole Condition: Poor
 Test Type: Conventional Bottom Hole (Initial)
 Tester: Shane Konzern
 Unit No: S3
 Reference Elevations: 1911.00 ft (KB)
 1903.00 ft (CF)
 KB to GR/CF: 8.00 ft

Serial #: 8159

Outside

Press@RunDepth: 687.83 psig @ 3142.00 ft (KB) Capacity: 8000.00 psig
 Start Date: 2014.09.28 End Date: 2014.09.28 Last Calib.: 2014.09.28
 Start Time: 15:28:00 End Time: 20:49:30 Time On Btm: 2014.09.28 @ 17:17:30
 Time Off Btm: 2014.09.28 @ 19:21:30

TEST COMMENT: IFP 30 BOB in 50 seconds.
 ISI 30 Weak surface blow back.
 FFP 30 BOB in 1 minute and 30 seconds. GTS at 1 minutes and 30 seconds.
 FSI 30 Weak surface blow back.



PRESSURE SUMMARY

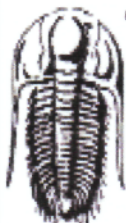
Time (Min.)	Pressure (psig)	Temp (deg F)	Annotation
0	1558.50	101.74	Initial Hydro-static
3	55.95	102.19	Open To Flow (1)
32	99.13	102.27	Shut-In(1)
61	699.15	102.82	End Shut-In(1)
62	108.95	102.65	Open To Flow (2)
91	158.30	102.99	Shut-In(2)
122	687.83	103.61	End Shut-In(2)
124	1491.66	104.28	Final Hydro-static

Recovery

Length (ft)	Description	Volume (bbl)
335.00	100% Clean gassy oil	4.70
10.00	2.5% gas, 2.5% oil, 2.5% water, 92.5% mud	0.14

Gas Rates

	Choke (inches)	Pressure (psig)	Gas Rate (Mcf/d)
First Gas Rate	0.13	0.00	5.39
Last Gas Rate	0.13	0.00	5.39
Max. Gas Rate	0.13	0.00	5.39



TRILOBITE TESTING, INC

DRILL STEM TEST REPORT

Mai Oil Operations, Inc.
 8411 Preston Rd STE 800
 Dallas TX 75225-5520
 ATTN: Wyatt Urban

33-15s-13w Russell,KS
Sellens #4
 Job Ticket: 60462 DST#: 2
 Test Start: 2014.09.29 @ 11:00:00

GENERAL INFORMATION:

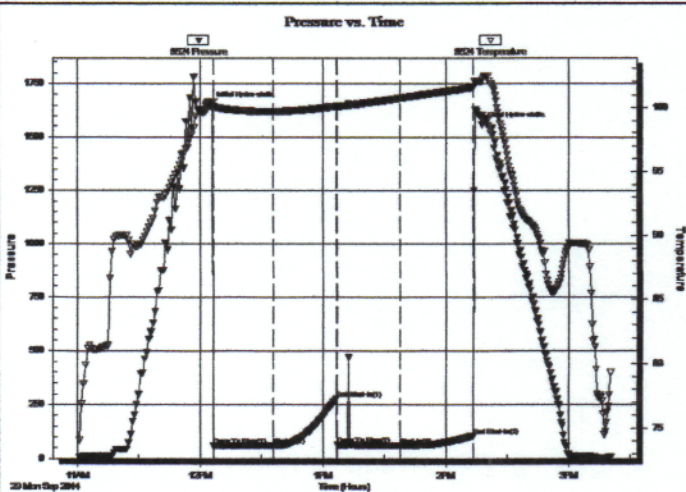
Formation: **LKC "H"**
 Deviated: No Whipstock: ft (KB)
 Time Tool Opened: 12:06:30
 Time Test Ended: 15:20:30
 Interval: **3210.00 ft (KB) To 3290.00 ft (KB) (TVD)**
 Total Depth: 3290.00 ft (KB) (TVD)
 Hole Diameter: 7.88 inches Hole Condition: Poor
 Test Type: Conventional Bottom Hole (Initial)
 Tester: Shane Konzern
 Unit No: S3
 Reference Elevations: 1911.00 ft (KB)
 1903.00 ft (CF)
 KB to GR/CF: 8.00 ft

Serial #: 8524

Inside

Press@RunDepth: 62.49 psig @ 3286.22 ft (KB) Capacity: 8000.00 psig
 Start Date: 2014.09.29 End Date: 2014.09.29 Last Calib.: 2014.09.29
 Start Time: 11:01:00 End Time: 15:20:30 Time On Btm: 2014.09.29 @ 12:05:00
 Time Off Btm: 2014.09.29 @ 14:17:30

TEST COMMENT: FFP 30 Weak blow built to 1/2"
 ISI 30 No blow back.
 FFP 45 No blow, flushed tool had good flush bubbles and gained no blow.
 FSI 45 No blow back.



PRESSURE SUMMARY

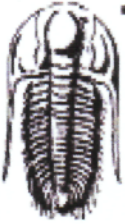
Time (Min.)	Pressure (psig)	Temp (deg F)	Annotation
0	1647.02	100.45	Initial Hydro-static
2	60.54	100.09	Open To Flow (1)
31	60.21	99.72	Shut-in(1)
62	276.19	100.12	End Shut-in(1)
62	62.99	100.08	Open To Flow (2)
93	62.49	100.72	Shut-in(2)
129	106.48	101.56	End Shut-in(2)
133	1558.34	102.02	Final Hydro-static

Recovery

Length (ft)	Description	Volume (bbl)
10.00	100% Mud	0.14

Gas Rates

Choke (inches)	Pressure (psig)	Gas Rate (Mcf/d)



TRILOBITE TESTING, INC

DRILL STEM TEST REPORT

Mai Oil Operations, Inc.
 8411 Preston Rd STE 800
 Dallas TX 75225-5520
 ATTN: Wyatt Urban

33-15s-13w Russell,KS
Sellens #4
 Job Ticket: 60463 **DST#: 3**
 Test Start: 2014.09.29 @ 22:14:00

GENERAL INFORMATION:

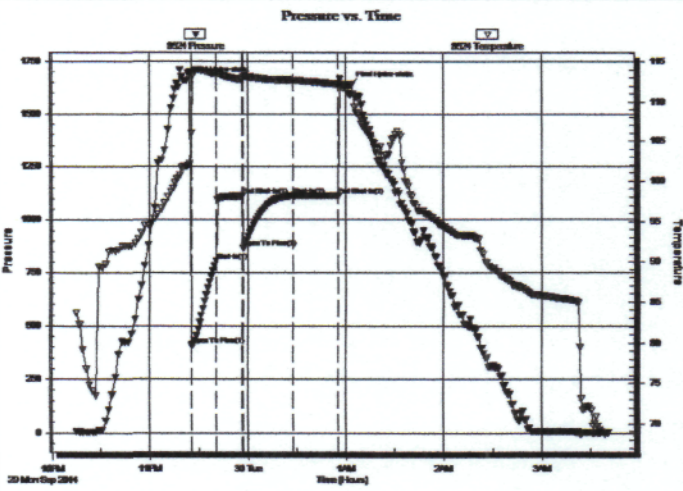
Formation: **Arbuckle**
 Deviated: No Whipstock: ft (KB)
 Time Tool Opened: 23:25:30
 Time Test Ended: 03:41:00
 Interval: **3322.00 ft (KB) To 3352.00 ft (KB) (TVD)**
 Total Depth: 3352.00 ft (KB) (TVD)
 Hole Diameter: 7.88 inches Hole Condition: Poor
 Test Type: Conventional Bottom Hole (Initial)
 Tester: Shane Konzern
 Unit No: S3
 Reference Elevations: 1911.00 ft (KB)
 1903.00 ft (CF)
 KB to GR/CF: 8.00 ft

Serial #: 8524

Inside

Press@RunDepth: 1112.01 psig @ 3348.00 ft (KB) Capacity: 8000.00 psig
 Start Date: 2014.09.29 End Date: 2014.09.30 Last Calib.: 2014.09.30
 Start Time: 22:15:00 End Time: 03:41:00 Time On Btrm: 2014.09.29 @ 23:21:30
 Time Off Btrm: 2014.09.30 @ 01:03:00

TEST COMMENT: IFF 15 BOB in 30 seconds.
 ISI 15 No blow back.
 FFP 30 BOB in 30 seconds.
 FSI 30 No blow back.



PRESSURE SUMMARY

Time (Min.)	Pressure (psig)	Temp (deg F)	Annotation
0	1659.50	101.85	Initial Hydro-static
4	410.54	105.95	Open To Flow (1)
19	807.63	113.43	Shut-In(1)
35	1110.96	112.73	End Shut-In(1)
36	866.88	113.10	Open To Flow (2)
66	1112.01	112.69	Shut-In(2)
94	1113.05	112.20	End Shut-In(2)
102	1638.91	110.97	Final Hydro-static

Recovery

Length (ft)	Description	Volume (bbl)
441.00	OMCW 5% Oil, 40% mud, 55% Water.	6.19
189.00	GOCMW 2.5% mud, 2.5% oil, 10% mud, 85% water	2.65
252.00	GMCOW 2.5% mud, 5% gas, 5% oil, 87.5% water	3.53
315.00	OCMW 10% oil, 20% mud, 70% water	4.42
252.00	VSOCW 2.5% oil, 97.5% water.	3.53
935.00	100% water	13.12

Gas Rates

	Choke (inches)	Pressure (psig)	Gas Rate (Mcf/d)

QUALITY OILWELL CEMENTING, INC.

Federal Tax I.D.# 20-2886107

Phone 785-483-2025
Cell 785-324-1041

Home Office P.O. Box 32 Russell, KS 67665

No. **858**

Date 9-25-14	Sec. 33	Twp. 15	Range 13	County Russell	State KS	On Location	Finish 5:15
---------------------	----------------	----------------	-----------------	-----------------------	-----------------	-------------	--------------------

Location **Russell ks 5 to Michaelis Rd, 4E, 15, 1E, N n 2**

Lease Sellens	Well No. 4	Owner To Quality Oilwell Cementing, Inc. You are hereby requested to rent cementing equipment and furnish cementer and helper to assist owner or contractor to do work as listed.
Contractor Southwind 3		Charge To Ma. Oil
Type Job Surface		
Hole Size 12 1/4	T.D. 514	
Csg. 8 7/8	Depth 514	Street
Tbg. Size	Depth	City State
Tool	Depth	The above was done to satisfaction and supervision of owner agent or contractor.
Cement Left in Csg.	Shoe Joint 20	Cement Amount Ordered 250 60/40, 3%cc, 2%gel
Meas Line	Displace 31661	

EQUIPMENT

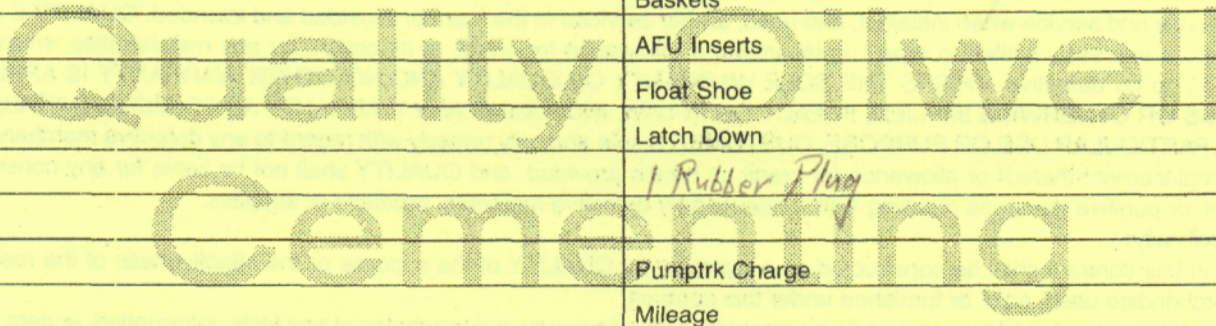
Pumptrk 17	No.	Cementer Helper Lonnie W.	Common
Bulktrk 1	No.	Driver Brett	Poz. Mix
Bulktrk P4	No.	Driver Travis	Gel.
			Calcium

JOB SERVICES & REMARKS

Remarks: Cement did circulate	Hulls
Rat Hole	Salt
Mouse Hole	Flowseal
Centralizers	Kol-Seal
Baskets	Mud CLR 48
D/V or Port Collar	CFL-117 or CD110 CAF 38
	Sand
	Handling
	Mileage

FLOAT EQUIPMENT

	Guide Shoe
	Centralizer
	Baskets
	AFU Inserts
	Float Shoe
	Latch Down
	1 Rubber Plug
	Pumptrk Charge
	Mileage



X Signature **Jay Davis**

	Tax
	Discount
	Total Charge

QUALITY OILWELL CEMENTING, INC.

Federal Tax I.D.# 20-2886107

Phone 785-483-2025
Cell 785-324-1041

Home Office P.O. Box 32 Russell, KS 67665

No. **707**

Date	9-30-14	Sec.	33	Twp.	15	Range	13	County	Russell	State	KS	On Location	Finish	9:00PM
------	---------	------	----	------	----	-------	----	--------	---------	-------	----	-------------	--------	--------

Lease	Sellers	Well No.	#4	Location	Russell S to Michaelis Rd 4E 15 E	Owner	Minto
-------	---------	----------	----	----------	-----------------------------------	-------	-------

Contractor	Southwind #3	To Quality Oilwell Cementing, Inc. You are hereby requested to rent cementing equipment and furnish cementer and helper to assist owner or contractor to do work as listed.			
Type Job	Production string	Charge To	Ma. 0:1		
Hole Size	7 7/8	T.D.	3400		
Csg.	5 1/2	Depth	3395 1/2		
Tbg. Size		Depth			
Tool		Depth			
Cement Left in Csg.		Shoe Joint	21.08		
Meas Line		Displace	82 1/4 bbl		
			Cement Amount Ordered 160 60/10 10% Salt 2% Gel 1/4 Flo		

EQUIPMENT				
Pumptrk	5	No.	Cementer Helper David	Common
Bulktrk	15	No.	Driver Clayton Tyson	Poz. Mix
Bulktrk	PU	No.	Driver Brett	Gel.
				Calcium

JOB SERVICES & REMARKS		
Remarks:		Hulls
Rat Hole	30.5x	Salt
Mouse Hole		Flowseal
Centralizers	- 1 - 10	Kol-Seal
Baskets		Mud CLR 48 - 1000 gal Mud Flush
D/V or Port Collar		CFL-117 or CD110 CAF 38
		Sand
		Handling
		Mileage

JOB SERVICES & REMARKS		
Ran 8 1/2 Jss & Est. cfr	Mileage	5 1/2
Mix 1000 gal Mud Flush		FLOAT EQUIPMENT
Plug Rat hole	Guide Shoe	
Mixed 130 sx down 5 1/2	Centralizer	- 10
Displaced 82 1/4 bbl	Baskets	
Lift @ 700 lbs	AFU Inserts	
Landed @ 1500 lbs	Float Shoe	- 1
Plug held	Latch Down	- 1
	Rubber Plug	- 1
	Pumptrk Charge	
	Mileage	
		Tax
		Discount
		Total Charge

X Signature *[Handwritten Signature]*

