



CONSOLIDATED
Oil Well Services, LLC

PO Box 884, Chanute, KS 66720
620-431-9210 or 800-467-8676

FIELD TICKET & TREATMENT REPORT
CEMENT

TICKET NUMBER 50625 ¹⁰⁵¹
LOCATION Ottawa
FOREMAN Alan Mader ¹⁰¹

INVOICE # 802163

DATE	CUSTOMER #	WELL NAME & NUMBER	SECTION	TOWNSHIP	RANGE	COUNTY			
11-10-14	9999	R. Player Font #3 NW 13	17	21	M.				
CUSTOMER J C Operations		TRUCK #		DRIVER		TRUCK #		DRIVER	
MAILING ADDRESS 4747 Texas		730		Alan Mader		Safety Mod			
CITY Wellsville		368		Art McD					
STATE <u>KS</u> ZIP CODE <u>66092</u>		369		Mik Hold					
JOB TYPE <u>long string</u>		HOLE SIZE <u>6 3/4</u>		HOLE DEPTH <u>760</u>		CASING SIZE & WEIGHT <u>4 1/2</u>			
CASING DEPTH <u>740</u>		DRILL PIPE		TUBING		OTHER			
SLURRY WEIGHT		SLURRY VOL		WATER gal/sk		CEMENT LEFT IN CASING <u>yes</u>			
DISPLACEMENT <u>11.6</u>		DISPLACEMENT PSI <u>800</u>		MIX PSI <u>200</u>		RATE <u>4 bpm</u>			

REMARKS: Held meeting. Established rate. Mixed & pumped 100# gel followed by 6 1/2 bbl dye marker. Mixed & pumped 90 sk 50/50 cement plus 2% gel. Circulated dye. Flushed pump. Pumped plug to casing TD with 11.6 bbl clean water. Circulated 5 bbl cement returns. Well held 800 PSI. Set float.

Wes, TOS

Alan Mader

ACCOUNT CODE	QUANTITY or UNITS	DESCRIPTION of SERVICES or PRODUCT	UNIT PRICE	TOTAL
5401 -	1	PUMP CHARGE	368	1080.00
5406 -	20	MILEAGE	368	840.00
5402 -	740'	casing footage	368	
5407 -	major	tan miles	558	368.00
5502L -	1 1/2	80-90	369	150.00
41124 -	90	50/50 cement	1035.00	
11186 -	251 #	gel	55.22	
		material sub	1090.22	
		less 30% -	327.07	
		material total		763.15
41124 -	1	4 1/2 plug		47.25
completed			2911.49	
			SAL & S TAX	62.00
			ESTIMATED TOTAL	2559.40

AUTHORIZATION [Signature] TITLE _____ DATE _____

I acknowledge that the payment terms, unless specifically amended in writing on the front of the form or in the customer's account records, at our office, and conditions of service on the back of this form are in effect for services identified on this form.



MIDWEST SURVEYS

LOGGING - PERFORATING - CONSULTING SERVICES
P.O. Box 68, Osawatomie, KS 66864
913 / 755 - 2128

GAMMA RAY / NEUTRON / CCL

File No.

API # 15-121-30,789

Company **Fontus EOR, LLC**

Well **Robert Player No. Fontus-3**

Field **Paola - Rantoul**

County **Miami** State **Kansas**

Location **947' FNL & 2081' FWL
NW-SE-NE-NW**

Other Services
Perforate

Sec 13	Twp 17S	Rge 21e	Elevation 1042'	Elevation
Permanent Datum	GL			K.B. NA
Log Measured From	GL			D.F. NA
Drilling Measured From	GL			GL 1042'

Date 11-17-2014

Run Number One

Depth Driller 760.0

Depth Logger 736.0

Bottom Logged Interval 735.0

Top Log Interval 20.0

Fluid Level Full

Type Fluid Water

Density / Viscosity NA

Salinity - PPM Cl NA

Max Recorded Temp NA

Estimated Cement Top 0.0

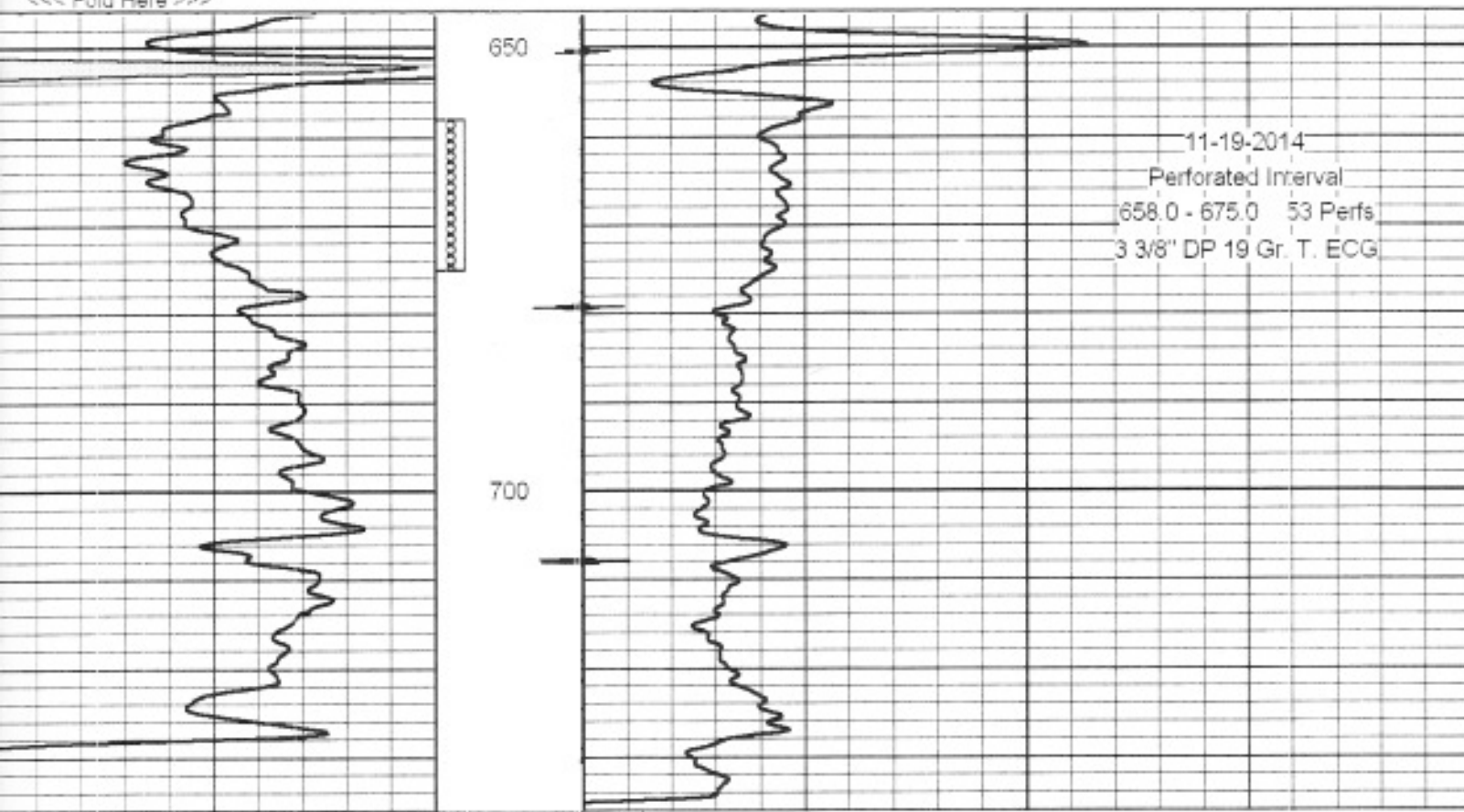
Equipment No. 107

Location Osawatomie

Recorded By Steve Windisch

Witnessed By Jerid Hoehn

BORE-HOLE RECORD				CASING RECORD			
Run No.	BIT	FROM	TO	SIZE	WGT.	FROM	TO
One	12.25"	0.0	23.0	8.625"	23.0 #	0.0	23.0
Two	6.75"	23.0	760.0	4.50"	9.5 #	0.0	740.0



11-19-2014
 Perforated Interval
 658.0 - 675.0 53 Perfs
 3 3/8" DP 19 Gr. T. ECG