

Geological Report

American Warrior, Inc.
EHT-Supes Unit #2
750' FSL & 2560' FWL
Sec. 17 T18s R21w
Ness County, Kansas



American Warrior, Inc.

General Data

Well Data: American Warrior, Inc.
EHT-Supes Unit #2
750' FSL & 2560' FWL
Sec. 17 T18s R21w
Ness County, Kansas
API # 15-135-25791-0000

Drilling Contractor: Discovery Drilling Co. Inc. Rig #3

Geologist: Jason T Alm

Spud Date: August 10, 2014

Completion Date: August 18, 2014

Elevation: 2188' Ground Level
2196' Kelly Bushing

Directions: Bazine KS, East 1 ½ mi. to FF Rd. North 2 mi. to
150 Rd. West ½ mi. North into location.

Casing: 222' 8 5/8" surface casing
4389' 5 1/2" production casing

Samples: 10' wet and dry, 3950' to RTD

Drilling Time: 3600' to RTD

Electric Logs: Pioneer Energy Services "Chris DeSaire"
CNL/CDL, DIL

Drillstem Tests: Two, Trilobite Testing, Inc. "Jim Svaty"

Problems: None

Remarks: None

Formation Tops

	American Warrior, Inc. EHT-Suppe Unit #2 Sec. 17 T18s R21w 750' FSL & 2560' FWL
Formation	
Anhydrite	1445', +751
Base	1479', +717
Heebner	3654', -1458
Lansing	3700', -1504
BKc	4022', -1826
Pawnee	4098', -1902
Fort Scott	4178', -1982
Cherokee	4197', -2001
Mississippian	4282', -2086
Gilmore City	4377', -2181
LTD	4390', -2194
RTD	4390', -2194

Sample Zone Descriptions

Cherokee Sand (4199', -2003): Covered in DST #1
 Ss – Fine grained, fairly sorted, sub-rounded, poorly cemented with fair inter-granular porosity, light to good oil stain in cluster, fair show of free oil, very light odor, good yellow fluorescents, bright yellow cut fluorescents, 20 units hotwire.

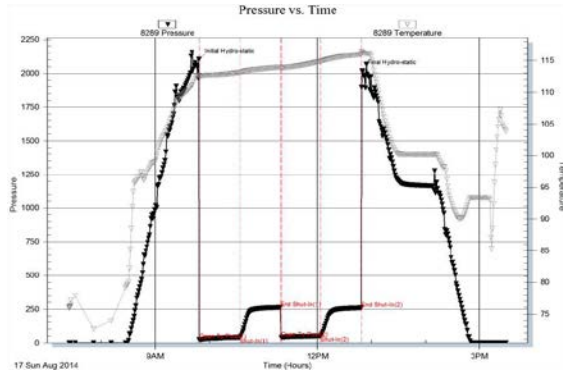
Mississippian Osage (4282', -2086): Covered in DST #2
 Δ – Mostly fresh with scattered fair vuggy porosity, slightly dolomitic, mostly dense with scattered poor inter-crystalline and vuggy porosity, spotted tarry oil stain in porosity, no show of free oil.

Drill Stem Tests
 Trilobite Testing, Inc.
 "Jim Svaty"

DST #1 Cherokee Sand

Interval (4195' – 4220') Anchor Length 25'

IHP	- 2103 #	
IFP	- 45" – Built to 5 in.	23-40 #
ISI	- 45" – Dead	262 #
FFP	- 45" – Built to 5 ¼ in.	39-51 #
FSI	- 45" – W.S.B.	259 #
FHP	- 2019 #	
BHT	- 116°F	

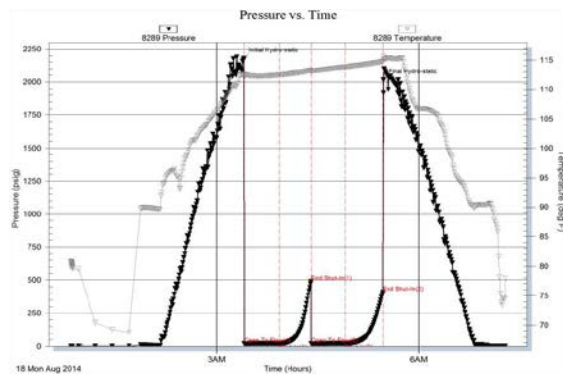


Recovery: 155' GIP
 35' GCO 38° Gravity
 57' WOCM 20% Oil, 10% Water

DST #2 Mississippian Osage

Interval (4291' – 4297') Anchor Length 6'

IHP	- 2177 #	
IFP	- 30" – W.S.B.	20-22 #
ISI	- 30" – Dead	490 #
FFP	- 30" – Dead	21-21 #
FSI	- 30" – Dead	410 #
FHP	- 2016 #	
BHT	- 115°F	



Recovery: 1' OSM

Structural Comparison

Formation	American Warrior, Inc. EHT-Supes Unit #2 Sec. 17 T18s R21w 750' FSL & 2560' FWL	Leben Drilling Co. Gaede #1 Sec. 17 T18s R21w SE SE SW	(+6)	American Warrior, Inc. EHT #1-17 Sec. 17 T18s R21w 2560' FNL & 2210' FWL	(+7)
Anhydrite	1445', +751	1449', +745	NA	1459', +744	(+8)
Base	1479', +717	NA		1494', +709	
Heebner	3654', -1458	3657', -1463	(+5)	3666', -1463	(+5)
Lansing	3700', -1504	3704', -1510	(+6)	3710', -1507	(+3)
BKc	4022', -1826	NA	NA	4035', -1832	(+6)
Pawnee	4098', -1902	NA	NA	4108', -1905	(+3)
Fort Scott	4178', -1982	NA	NA	4187', -1984	(+2)
Cherokee	4197', -2001	NA	NA	4206', -2003	(+2)
Mississippian	4282', -2086	4292', -2098	(+12)	4287', -2084	(+2)
Gilmore City	4377', -2181	NR	NR	NR	NR

Summary

The location for the EHT-Supes Unit #2 was found via 3-D seismic survey. The new well ran structurally as expected via the survey. Two Drill Stem Tests were conducted one of which recovered commercial amounts of oil from the Cherokee Sand Formation. After all gathered data had been examined the decision was made to run 5 ½ inch production casing to further evaluate the EHT-Supes Unit #2 well.

Recommended Perforations

Cherokee "A" Sand (4199' – 4204') DST #1

Respectfully Submitted,

Jason T Alm
Hard Rock Consulting, Inc.