



TRILOBITE TESTING, INC.

DRILL STEM TEST REPORT

Vincent Oil Corporation
 155 N Market Ste 700
 Wichita, KS 67202
 ATTN: Tom Dudgeon

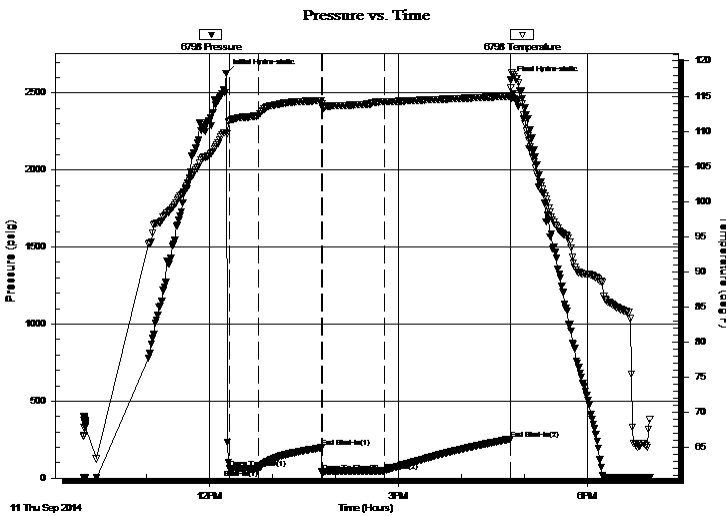
22-28S-23W Ford
Hawes Ranch 2-22
 Job Ticket: 57759 **DST#: 1**
 Test Start: 2014.09.11 @ 10:00:15

GENERAL INFORMATION:

Formation: **Mississippi**
 Deviated: No Whipstock: ft (KB)
 Time Tool Opened: 12:19:30
 Time Test Ended: 18:59:45
 Interval: **5108.00 ft (KB) To 5176.00 ft (KB) (TVD)**
 Total Depth: 5176.00 ft (KB) (TVD)
 Hole Diameter: 7.88 inches Hole Condition: Good
 Test Type: Conventional Bottom Hole (Initial)
 Tester: Leal Cason
 Unit No: 74
 Reference Elevations: 2487.00 ft (KB)
 2477.00 ft (CF)
 KB to GR/CF: 10.00 ft

Serial #: 6798 Inside
 Press @ Run Depth: 47.49 psig @ 5109.00 ft (KB) Capacity: 8000.00 psig
 Start Date: 2014.09.11 End Date: 2014.09.11 Last Calib.: 2014.09.11
 Start Time: 10:00:16 End Time: 18:59:45 Time On Btm: 2014.09.11 @ 12:16:00
 Time Off Btm: 2014.09.11 @ 16:47:15

TEST COMMENT: IF: Strong Blow , BOB in 20 seconds, GTS in 18 minutes, Gauged & Caught Sample
 IS: Blow Back Built to 6 inches
 FF: Strong Blow , BOB & GTS immediate, TSTM
 FS: No Blow Back



PRESSURE SUMMARY

Time (Min.)	Pressure (psig)	Temp (deg F)	Annotation
0	2627.18	109.84	Initial Hydro-static
4	63.80	111.56	Open To Flow (1)
31	57.73	112.23	Shut-In(1)
91	197.35	114.38	End Shut-In(1)
92	38.62	113.62	Open To Flow (2)
151	47.49	114.20	Shut-In(2)
271	254.55	115.00	End Shut-In(2)
272	2582.25	116.25	Final Hydro-static

Recovery

Length (ft)	Description	Volume (bbl)
0.00	5004 GIP	0.00
90.00	SGCM 2%G 98%M	1.26

Gas Rates

	Choke (inches)	Pressure (psig)	Gas Rate (Mcf/d)
First Gas Rate	0.25	18.00	51.40
Last Gas Rate	0.25	18.00	51.40



**TRILOBITE
TESTING, INC.**

DRILL STEM TEST REPORT

FLUID SUMMARY

Vincent Oil Corporation

22-28S-23W Ford

155 N Market Ste 700
Wichita, KS 67202

Hawes Ranch 2-22

Job Ticket: 57759

DST#: 1

ATTN: Tom Dudgeon

Test Start: 2014.09.11 @ 10:00:15

Mud and Cushion Information

Mud Type: Gel Chem

Cushion Type:

Oil API:

deg API

Mud Weight: 9.00 lb/gal

Cushion Length:

ft

Water Salinity:

ppm

Viscosity: 50.00 sec/qt

Cushion Volume:

bbbl

Water Loss: 9.99 in³

Gas Cushion Type:

Resistivity: ohm.m

Gas Cushion Pressure:

psig

Salinity: 8200.00 ppm

Filter Cake: 0.02 inches

Recovery Information

Recovery Table

Length ft	Description	Volume bbl
0.00	5004 GIP	0.000
90.00	SGCM 2%G 98%M	1.262

Total Length: 90.00 ft Total Volume: 1.262 bbl

Num Fluid Samples: 0

Num Gas Bombs: 0

Serial #:

Laboratory Name:

Laboratory Location:

Recovery Comments:



**TRILOBITE
TESTING, INC.**

DRILL STEM TEST REPORT

GAS RATES

Vincent Oil Corporation

22-28S-23W Ford

155 N Market Ste 700
Wichita, KS 67202

Hawes Ranch 2-22

Job Ticket: 57759

DST#: 1

ATTN: Tom Dudgeon

Test Start: 2014.09.11 @ 10:00:15

Gas Rates Information

Temperature: 59 (deg F)

Relative Density: 0.65

Z Factor: 0.8

Gas Rates Table

Flow Period	Elapsed Time	Choke (inches)	Pressure (psig)	Gas Rate (Mcf/d)
1	20	0.25	18.00	51.40
1	30	0.25	18.00	51.40

Serial #: 6798

Inside

Vincent Oil Corporation

Hawes Ranch 2-22

DST Test Number: 1

