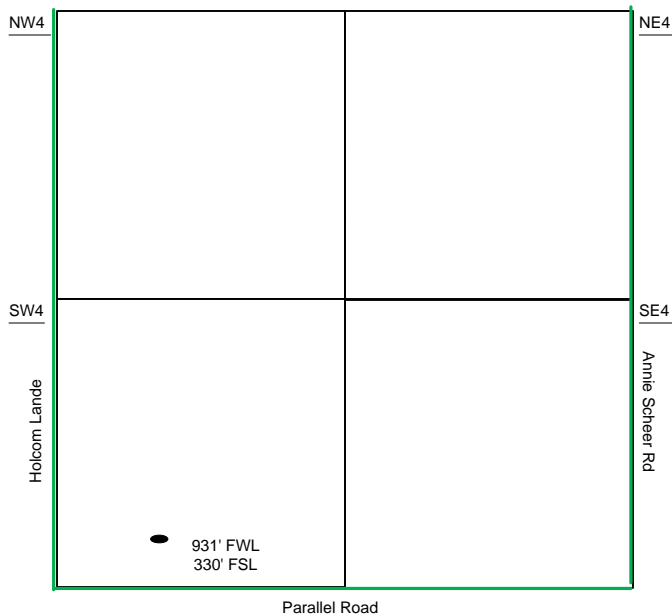
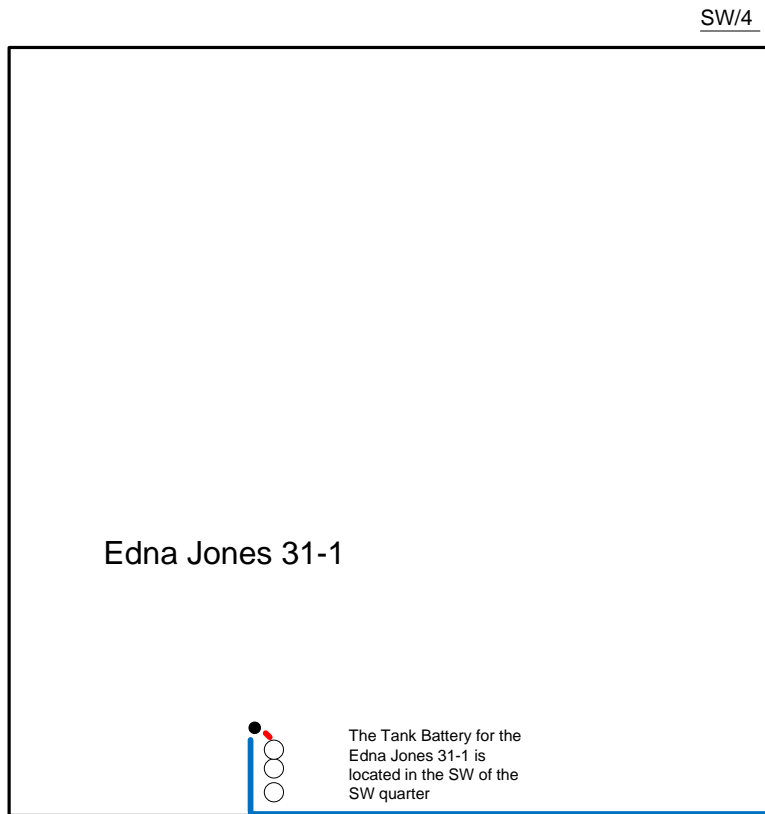


Proposed Plan of Construction

Edna Jones 31-1
Sec 31 T25S-R33W
Finney County, KS



Sec 31 – T25S – R33W



Proposed Details of
SW/4 Sec 31 – T25S – R33W

Proposed Site Diagram
Edna Jones 31-1
December 17, 2014

Note-Drawing **Not** to Scale