



## DRILL STEM TEST REPORT

Prepared For: **Black Diamond Oil Inc.**

P.O. Box 641  
Hays, KS 67601

ATTN: Richard Bell

### **Glennemeier A #1**

### **21-5s-21w Norton,KS**

Start Date: 2014.10.27 @ 23:12:00

End Date: 2014.10.28 @ 05:38:00

Job Ticket #: 60744                      DST #: 1

Trilobite Testing, Inc  
1515 Commerce Parkway Hays, KS 67601  
ph: 785-625-4778 fax: 785-625-5620

Printed: 2014.10.31 @ 14:01:57



**TRILOBITE  
TESTING, INC**

# DRILL STEM TEST REPORT

Black Diamond Oil Inc.

**21-5s-21w Norton,KS**

P.O. Box 641  
Hays, KS 67601

**Glennemeier A #1**

Job Ticket: 60744

**DST#: 1**

ATTN: Richard Bell

Test Start: 2014.10.27 @ 23:12:00

## GENERAL INFORMATION:

Formation: **Toronto - LKC "A"**

Deviated: No Whipstock: ft (KB)

Time Tool Opened: 01:44:30

Time Test Ended: 05:38:00

Test Type: Conventional Bottom Hole (Initial)

Tester: Brandon Quintana

Unit No: 48

**Interval: 3414.00 ft (KB) To 3476.00 ft (KB) (TVD)**

Reference Elevations: 2260.00 ft (KB)

Total Depth: 3476.00 ft (KB) (TVD)

2255.00 ft (CF)

Hole Diameter: 7.88 inches Hole Condition: Fair

KB to GR/CF: 5.00 ft

**Serial #: 8647**

**Inside**

Press@RunDepth: 43.10 psig @ 3415.00 ft (KB)

Capacity: 8000.00 psig

Start Date: 2014.10.27

End Date:

2014.10.28

Last Calib.:

2014.10.28

Start Time: 23:12:01

End Time:

05:38:00

Time On Btm:

2014.10.28 @ 01:40:30

Time Off Btm:

2014.10.28 @ 03:48:30

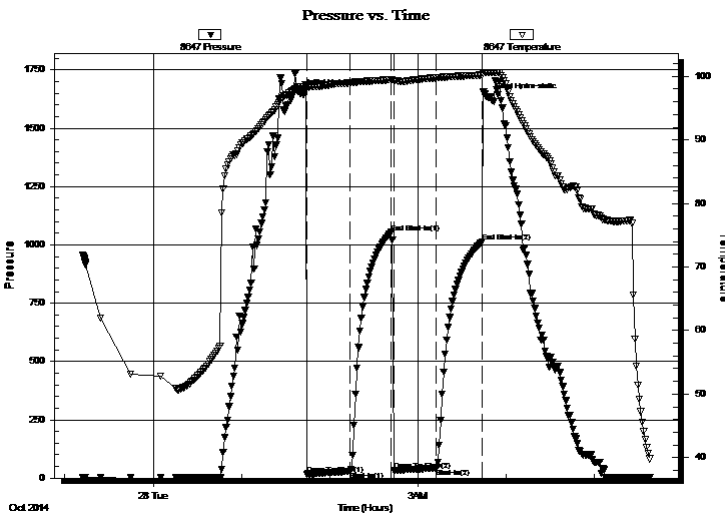
TEST COMMENT: 30 - IF - Opened w/ surface blow , didn't build

30 - ISI - No Return

30 - FF - No Blow

30 - FSI - No Return

## PRESSURE SUMMARY



Time (Min.)	Pressure (psig)	Temp (deg F)	Annotation
0	1648.48	98.31	Initial Hydro-static
4	17.11	98.24	Open To Flow (1)
33	29.62	98.99	Shut-In(1)
61	1053.06	99.47	End Shut-In(1)
63	32.64	99.36	Open To Flow (2)
92	43.10	99.78	Shut-In(2)
123	1012.87	100.20	End Shut-In(2)
128	1632.55	100.60	Final Hydro-static

## Recovery

Length (ft)	Description	Volume (bbl)
55.00	100% mud	0.27

## Gas Rates

	Choke (inches)	Pressure (psig)	Gas Rate (Mcf/d)





**TRILOBITE  
TESTING, INC**

# DRILL STEM TEST REPORT

**TOOL DIAGRAM**

Black Diamond Oil Inc.

**21-5s-21w Norton,KS**

P.O. Box 641  
Hays, KS 67601

**Glennemeier A #1**

Job Ticket: 60744

**DST#: 1**

ATTN: Richard Bell

Test Start: 2014.10.27 @ 23:12:00

## Tool Information

Drill Pipe:	Length: 3297.00 ft	Diameter: 3.80 inches	Volume: 46.25 bbl	Tool Weight: 2500.00 lb
Heavy Wt. Pipe:	Length: ft	Diameter: inches	Volume: - bbl	Weight set on Packer: 25000.00 lb
Drill Collar:	Length: 122.21 ft	Diameter: 2.25 inches	Volume: 0.60 bbl	Weight to Pull Loose: 35000.00 lb
			<u>Total Volume: - bbl</u>	Tool Chased 0.00 ft
Drill Pipe Above KB:	25.21 ft			String Weight: Initial 30000.00 lb
Depth to Top Packer:	3414.00 ft			Final 30000.00 lb
Depth to Bottom Packer:	ft			
Interval between Packers:	62.00 ft			
Tool Length:	82.00 ft			
Number of Packers:	2	Diameter: 6.75 inches		

Tool Comments:

## Tool Description

Tool Description	Length (ft)	Serial No.	Position	Depth (ft)	Accum. Lengths
Change Over Sub	1.00			3395.00	
Shut In Tool	5.00			3400.00	
Hydraulic tool	5.00		Inside	3405.00	
Packer	5.00			3410.00	20.00 Bottom Of Top Packer
Packer	4.00			3414.00	
Stubb	1.00			3415.00	
Recorder	0.00	8647	Inside	3415.00	
Recorder	0.00	8372	Outside	3415.00	
Perforations	25.00			3440.00	
Change Over Sub	1.00			3441.00	
Drill Pipe	31.00			3472.00	
Change Over Sub	1.00			3473.00	
Bullnose	3.00			3476.00	62.00 Bottom Packers & Anchor

**Total Tool Length: 82.00**



**TRILOBITE  
TESTING, INC**

# DRILL STEM TEST REPORT

**FLUID SUMMARY**

Black Diamond Oil Inc.

**21-5s-21w Norton,KS**

P.O. Box 641  
Hays, KS 67601

**Glennemeier A #1**

Job Ticket: 60744

**DST#: 1**

ATTN: Richard Bell

Test Start: 2014.10.27 @ 23:12:00

## Mud and Cushion Information

Mud Type: Gel Chem

Cushion Type:

Oil API:

deg API

Mud Weight: 9.00 lb/gal

Cushion Length:

ft

Water Salinity:

ppm

Viscosity: 57.00 sec/qt

Cushion Volume:

bbf

Water Loss: 8.78 in<sup>3</sup>

Gas Cushion Type:

Resistivity: 0.00 ohm.m

Gas Cushion Pressure:

psig

Salinity: 500.00 ppm

Filter Cake: 1.00 inches

## Recovery Information

Recovery Table

Length ft	Description	Volume bbf
55.00	100% mud	0.270

Total Length: 55.00 ft      Total Volume: 0.270 bbf

Num Fluid Samples: 0

Num Gas Bombs: 0

Serial #:

Laboratory Name:

Laboratory Location:

Recovery Comments:

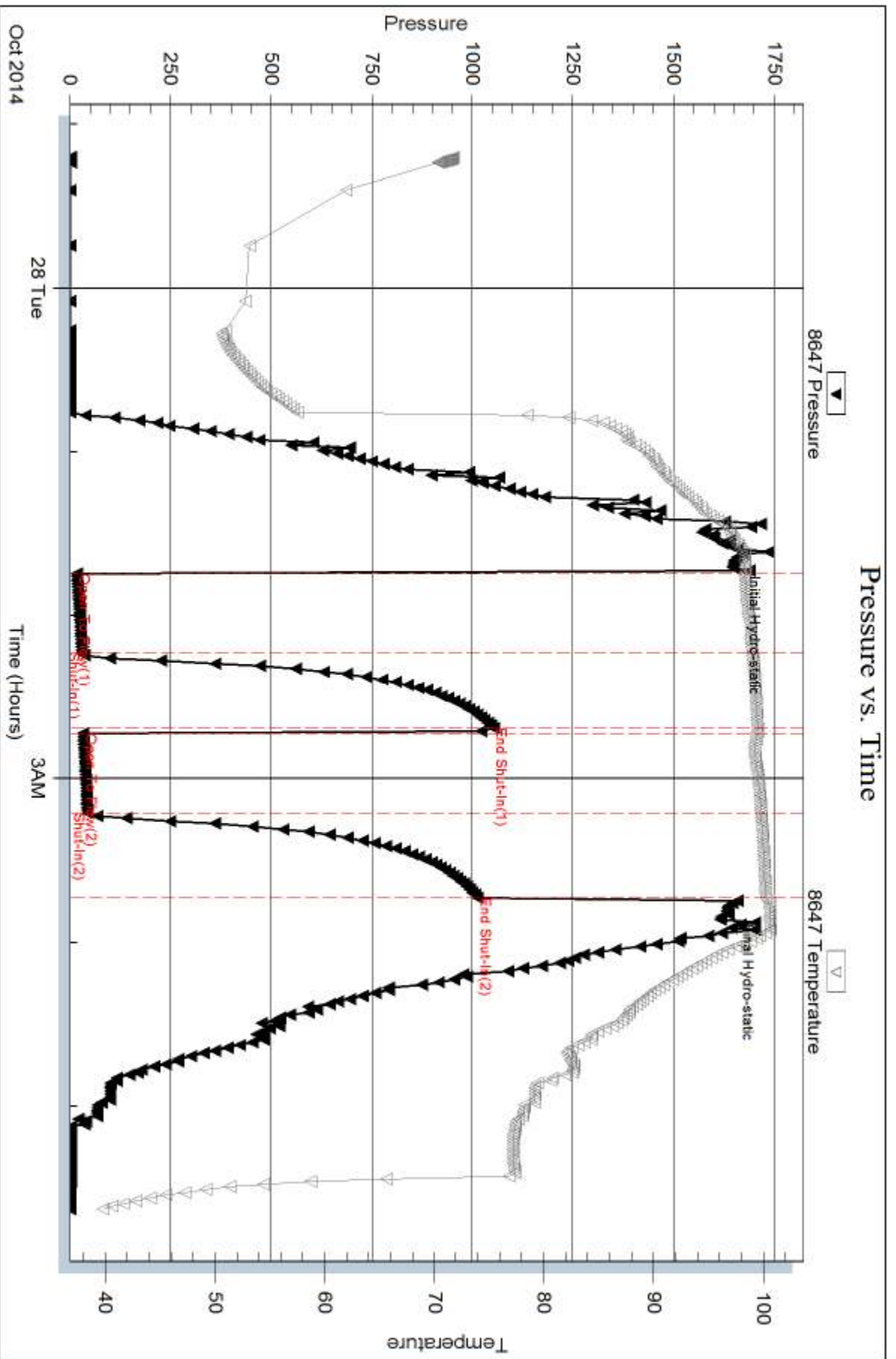
Serial #: 8647

Inside

Black Diamond Oil Inc.

Glennmeier A #1

DST Test Number: 1

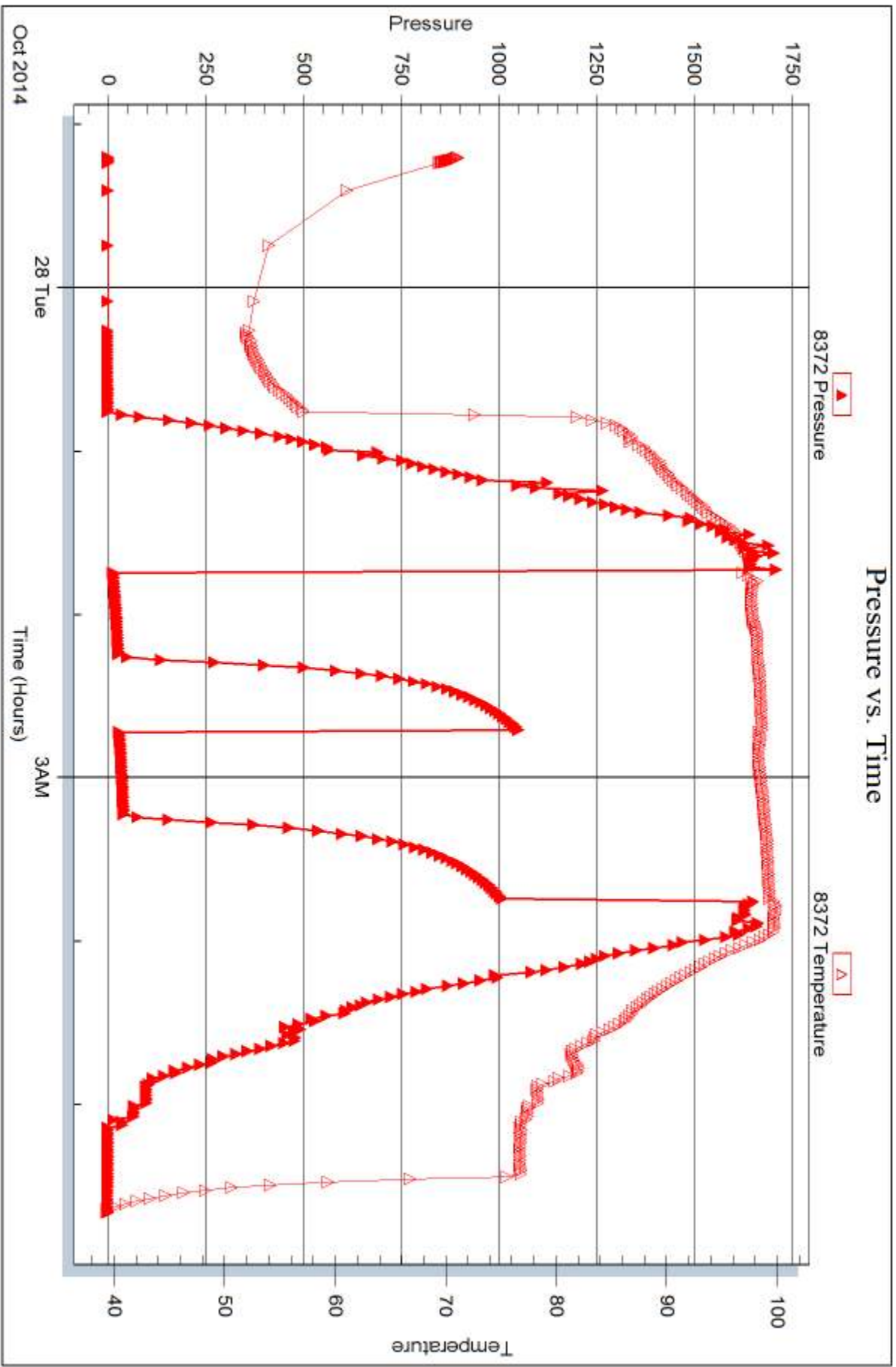


Serial #: 8372

Outside Black Diamond Oil Inc.

Glennmeier A #1

DST Test Number: 1



Trilobite Testing, Inc

Ref. No: 60744

Printed: 2014, 10, 31 @ 14:01:58



## DRILL STEM TEST REPORT

Prepared For: **Black Diamond Oil Inc.**

P.O. Box 641  
Hays, KS 67601

ATTN: Richard Bell

### **Glennemeier A #1**

### **21-5s-21w Norton,KS**

Start Date: 2014.10.28 @ 12:21:00

End Date: 2014.10.28 @ 18:24:30

Job Ticket #: 60745                      DST #: 2

Trilobite Testing, Inc  
1515 Commerce Parkway Hays, KS 67601  
ph: 785-625-4778 fax: 785-625-5620

Printed: 2014.10.31 @ 14:01:36





**TRILOBITE  
TESTING, INC**

# DRILL STEM TEST REPORT

Black Diamond Oil Inc.

**21-5s-21w Norton,KS**

P.O. Box 641  
Hays, KS 67601

**Glennemeier A #1**

Job Ticket: 60745

**DST#: 2**

ATTN: Richard Bell

Test Start: 2014.10.28 @ 12:21:00

## GENERAL INFORMATION:

Formation: **LKC "K"**

Deviated: No Whipstock: ft (KB)

Time Tool Opened: 14:44:30

Time Test Ended: 18:24:30

Test Type: Conventional Bottom Hole (Initial)

Tester: Brandon Quintana

Unit No: 48

**Interval: 3613.00 ft (KB) To 3635.00 ft (KB) (TVD)**

Reference Elevations: 2260.00 ft (KB)

Total Depth: 3635.00 ft (KB) (TVD)

2255.00 ft (CF)

Hole Diameter: 7.88 inches Hole Condition: Fair

KB to GR/CF: 5.00 ft

**Serial #: 8647 Inside**

Press@RunDepth: 17.51 psig @ 3614.00 ft (KB)

Capacity: 8000.00 psig

Start Date: 2014.10.28

End Date:

2014.10.28

Last Calib.: 2014.10.29

Start Time: 12:21:01

End Time:

18:24:30

Time On Btm: 2014.10.28 @ 14:43:30

Time Off Btm: 2014.10.28 @ 16:48:30

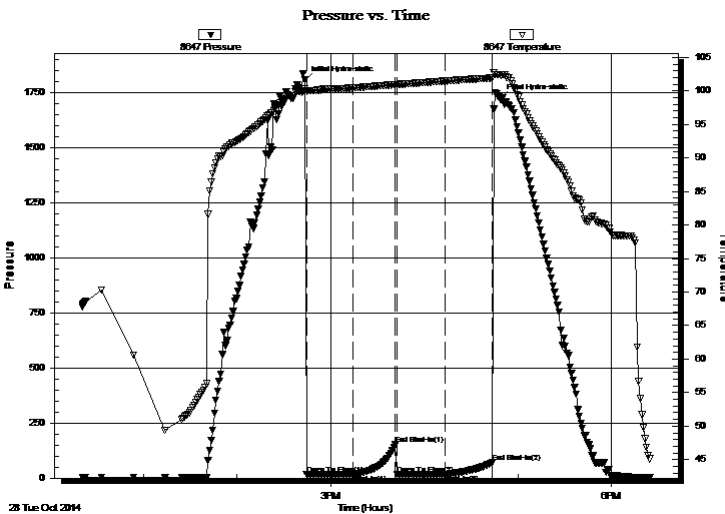
TEST COMMENT: 30 - IF - Opened w/ surface blow , didn't build

30 - ISI - No Return

30 - FF - No Blow

30 - FSI - No Return

## PRESSURE SUMMARY



Time (Min.)	Pressure (psig)	Temp (deg F)	Annotation
0	1806.02	100.31	Initial Hydro-static
1	15.90	100.08	Open To Flow (1)
31	17.15	100.46	Shut-In(1)
58	152.52	100.94	End Shut-In(1)
59	16.81	100.91	Open To Flow (2)
90	17.51	101.49	Shut-In(2)
120	70.12	101.93	End Shut-In(2)
125	1720.83	102.39	Final Hydro-static

## Recovery

Length (ft)	Description	Volume (bbl)
1.00	100%m	0.00

## Gas Rates

Choke (inches)	Pressure (psig)	Gas Rate (Mcf/d)





**TRILOBITE  
TESTING, INC**

# DRILL STEM TEST REPORT

**TOOL DIAGRAM**

Black Diamond Oil Inc.

**21-5s-21w Norton,KS**

P.O. Box 641  
Hays, KS 67601

**Glennemeier A #1**

Job Ticket: 60745

**DST#: 2**

ATTN: Richard Bell

Test Start: 2014.10.28 @ 12:21:00

## Tool Information

Drill Pipe:	Length: 3484.00 ft	Diameter: 3.80 inches	Volume: 48.87 bbl	Tool Weight: 2500.00 lb
Heavy Wt. Pipe:	Length: ft	Diameter: inches	Volume: - bbl	Weight set on Packer: 25000.00 lb
Drill Collar:	Length: 122.21 ft	Diameter: 2.25 inches	Volume: 0.60 bbl	Weight to Pull Loose: 40000.00 lb
			<u>Total Volume: - bbl</u>	Tool Chased 0.00 ft
Drill Pipe Above KB:	13.21 ft			String Weight: Initial 35000.00 lb
Depth to Top Packer:	3613.00 ft			Final 35000.00 lb
Depth to Bottom Packer:	ft			
Interval between Packers:	22.00 ft			
Tool Length:	42.00 ft			
Number of Packers:	2	Diameter: 6.75 inches		

Tool Comments:

## Tool Description

Tool Description	Length (ft)	Serial No.	Position	Depth (ft)	Accum. Lengths
Change Over Sub	1.00			3594.00	
Shut In Tool	5.00			3599.00	
Hydraulic tool	5.00		Inside	3604.00	
Packer	5.00			3609.00	20.00 Bottom Of Top Packer
Packer	4.00			3613.00	
Stubb	1.00			3614.00	
Recorder	0.00	8647	Inside	3614.00	
Recorder	0.00	8372	Outside	3614.00	
Perforations	18.00			3632.00	
Bullnose	3.00			3635.00	22.00 Bottom Packers & Anchor
<b>Total Tool Length:</b>	<b>42.00</b>				



**TRILOBITE  
TESTING, INC**

# DRILL STEM TEST REPORT

## FLUID SUMMARY

Black Diamond Oil Inc.

**21-5s-21w Norton,KS**

P.O. Box 641  
Hays, KS 67601

**Glennemeier A #1**

Job Ticket: 60745

**DST#: 2**

ATTN: Richard Bell

Test Start: 2014.10.28 @ 12:21:00

### Mud and Cushion Information

Mud Type: Gel Chem

Cushion Type:

Oil API:

deg API

Mud Weight: 9.00 lb/gal

Cushion Length:

ft

Water Salinity:

ppm

Viscosity: 52.00 sec/qt

Cushion Volume:

bbbl

Water Loss: 7.59 in<sup>3</sup>

Gas Cushion Type:

Resistivity: 0.00 ohm.m

Gas Cushion Pressure:

psig

Salinity: 500.00 ppm

Filter Cake: 1.00 inches

### Recovery Information

Recovery Table

Length ft	Description	Volume bbl
1.00	100%m	0.005

Total Length: 1.00 ft      Total Volume: 0.005 bbl

Num Fluid Samples: 0

Num Gas Bombs: 0

Serial #:

Laboratory Name:

Laboratory Location:

Recovery Comments:

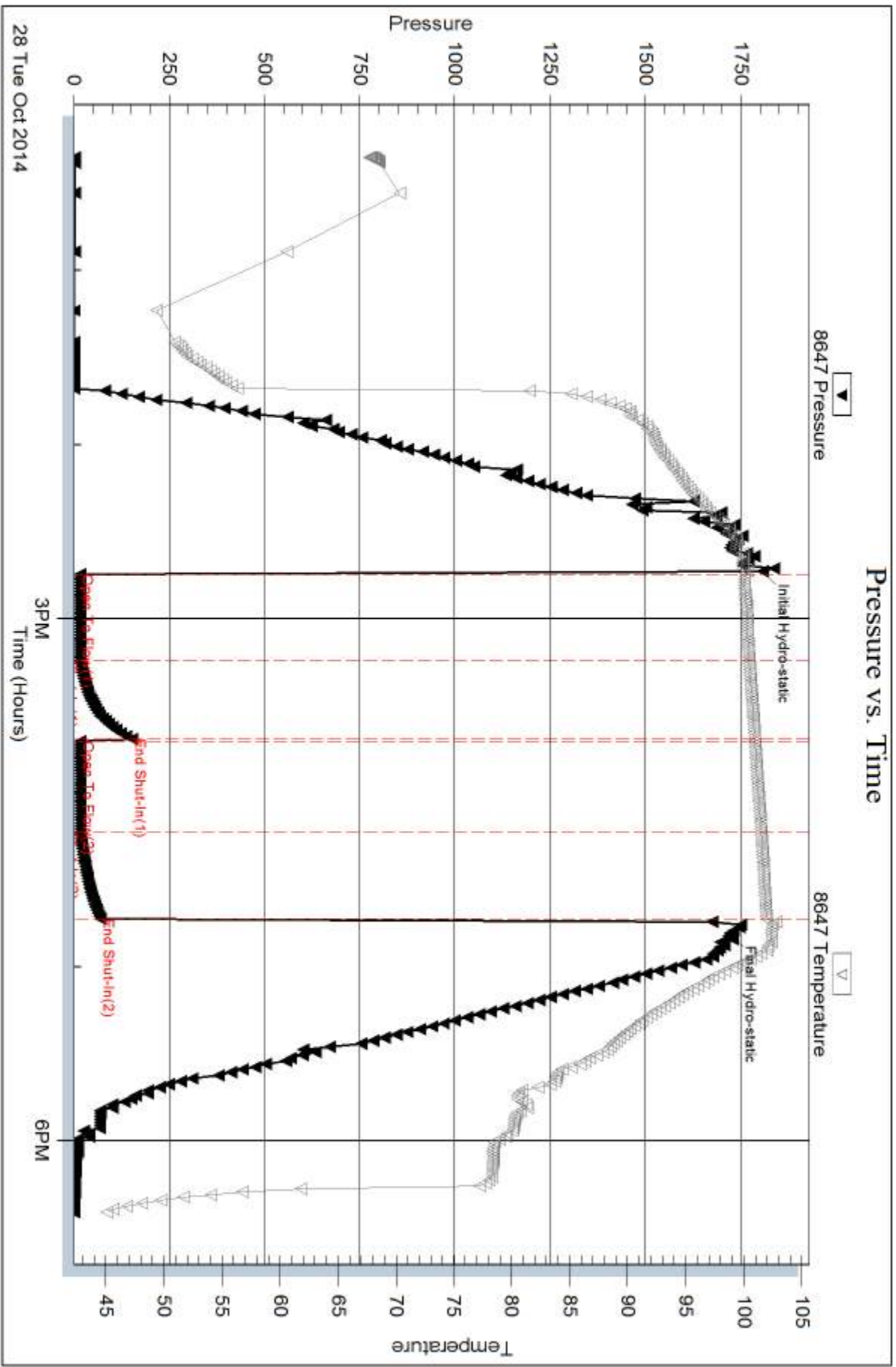
Serial #: 8647

Inside

Black Diamond Oil Inc.

Glennmeier A #1

DST Test Number: 2



Trilobite Testing, Inc

Ref. No: 60745

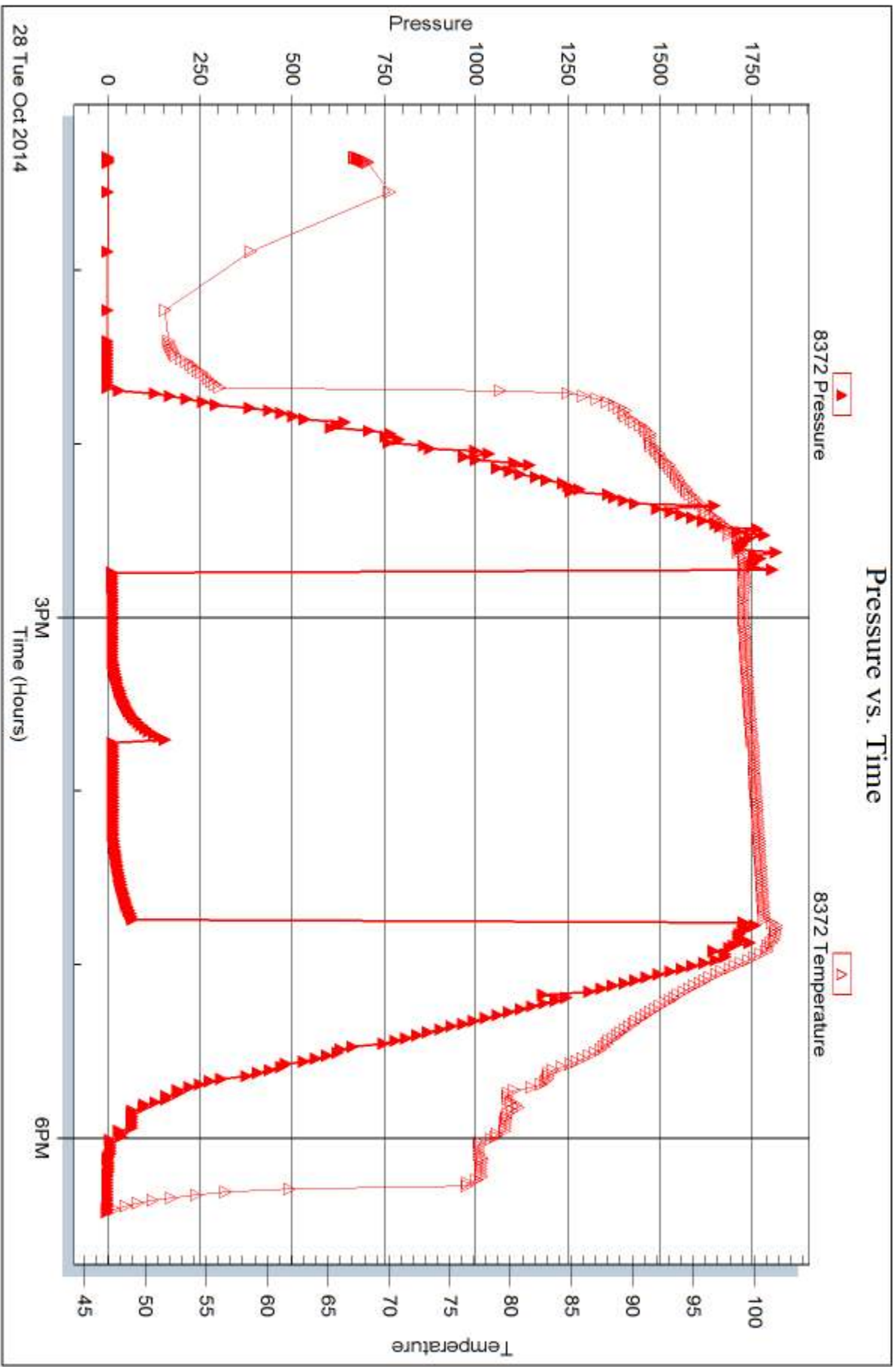
Printed: 2014, 10, 31 @ 14:01:37

Serial #: 8372

Outside Black Diamond Oil Inc.

Glennmeier A #1

DST Test Number: 2



Trilobite Testing, Inc

Ref. No: 60745

Printed: 2014, 10, 31 @ 14:01:37



## DRILL STEM TEST REPORT

Prepared For: **Black Diamond Oil Inc.**

P.O. Box 641  
Hays, KS 67601

ATTN: Richard Bell

### **Glennemeier A #1**

### **21-5s-21w Norton,KS**

Start Date: 2014.10.29 @ 16:51:00

End Date: 2014.10.30 @ 00:04:00

Job Ticket #: 60746                      DST #: 3

Trilobite Testing, Inc  
1515 Commerce Parkway Hays, KS 67601  
ph: 785-625-4778 fax: 785-625-5620

Printed: 2014.10.31 @ 14:00:54



**TRILOBITE TESTING, INC**

# DRILL STEM TEST REPORT

Black Diamond Oil Inc.

**21-5s-21w Norton, KS**

P.O. Box 641  
Hays, KS 67601

**Glennemeier A #1**

Job Ticket: 60746

**DST#: 3**

ATTN: Richard Bell

Test Start: 2014.10.29 @ 16:51:00

## GENERAL INFORMATION:

Formation: **Bsl Sand**

Deviated: No Whipstock: ft (KB)

Time Tool Opened: 18:26:30

Time Test Ended: 00:04:00

Test Type: Conventional Bottom Hole (Initial)

Tester: Brandon Quintana

Unit No: 48

**Interval: 3689.00 ft (KB) To 3699.00 ft (KB) (TVD)**

Reference Elevations: 2260.00 ft (KB)

Total Depth: 3699.00 ft (KB) (TVD)

2255.00 ft (CF)

Hole Diameter: 7.88 inches Hole Condition: Fair

KB to GR/CF: 5.00 ft

**Serial #: 8647 Inside**

Press@RunDepth: 129.87 psig @ 3690.00 ft (KB)

Capacity: 8000.00 psig

Start Date: 2014.10.29

End Date:

2014.10.30

Last Calib.: 2014.10.30

Start Time: 16:51:01

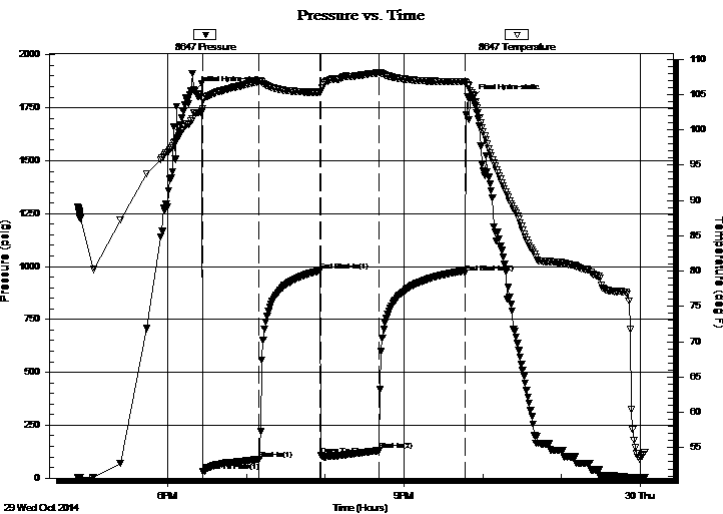
End Time:

00:04:00

Time On Btm: 2014.10.29 @ 18:20:30

Time Off Btm: 2014.10.29 @ 21:51:30

**TEST COMMENT:** 45 - IF - Opened w/ surface blow , built to  
45 - ISI - No Return  
45 - FF - Blow built to 10" over the 45 min.  
60 - FSI - No Return



## PRESSURE SUMMARY

Time (Min.)	Pressure (psig)	Temp (deg F)	Annotation
0	1829.42	102.42	Initial Hydro-static
6	30.84	102.95	Open To Flow (1)
49	89.53	106.83	Shut-In(1)
95	980.23	105.30	End Shut-In(1)
96	108.33	105.42	Open To Flow (2)
140	129.87	108.05	Shut-In(2)
206	969.18	106.78	End Shut-In(2)
211	1793.80	105.22	Final Hydro-static

## Recovery

Length (ft)	Description	Volume (bbl)
21.00	OCM 80% m, 20% o	0.10
335.00	GO 60% g, 40% o	3.78

## Gas Rates

	Choke (inches)	Pressure (psig)	Gas Rate (Mcf/d)







**TRILOBITE  
TESTING, INC**

# DRILL STEM TEST REPORT

**TOOL DIAGRAM**

Black Diamond Oil Inc.

**21-5s-21w Norton,KS**

P.O. Box 641  
Hays, KS 67601

**Glennemeier A #1**

Job Ticket: 60746

**DST#: 3**

ATTN: Richard Bell

Test Start: 2014.10.29 @ 16:51:00

## Tool Information

Drill Pipe:	Length: 3574.00 ft	Diameter: 3.80 inches	Volume: 50.13 bbl	Tool Weight: 2500.00 lb
Heavy Wt. Pipe:	Length: ft	Diameter: inches	Volume: - bbl	Weight set on Packer: 25000.00 lb
Drill Collar:	Length: 122.21 ft	Diameter: 2.25 inches	Volume: 0.60 bbl	Weight to Pull Loose: 40000.00 lb
			<u>Total Volume: - bbl</u>	Tool Chased 0.00 ft
Drill Pipe Above KB:	27.21 ft			String Weight: Initial 35000.00 lb
Depth to Top Packer:	3689.00 ft			Final 37000.00 lb
Depth to Bottom Packer:	ft			
Interval between Packers:	11.00 ft			
Tool Length:	31.00 ft			
Number of Packers:	2	Diameter: 6.75 inches		

Tool Comments:

## Tool Description

Tool Description	Length (ft)	Serial No.	Position	Depth (ft)	Accum. Lengths
Change Over Sub	1.00			3670.00	
Shut In Tool	5.00			3675.00	
Hydraulic tool	5.00		Inside	3680.00	
Packer	5.00			3685.00	20.00 Bottom Of Top Packer
Packer	4.00			3689.00	
Stubb	1.00			3690.00	
Recorder	0.00	8647	Inside	3690.00	
Recorder	0.00	8372	Outside	3690.00	
Perforations	7.00			3697.00	
Bullnose	3.00			3700.00	11.00 Bottom Packers & Anchor
<b>Total Tool Length:</b>	<b>31.00</b>				



**TRILOBITE  
TESTING, INC**

# DRILL STEM TEST REPORT

**FLUID SUMMARY**

Black Diamond Oil Inc.

**21-5s-21w Norton,KS**

P.O. Box 641  
Hays, KS 67601

**Glennemeier A #1**

Job Ticket: 60746

**DST#: 3**

ATTN: Richard Bell

Test Start: 2014.10.29 @ 16:51:00

## Mud and Cushion Information

Mud Type: Gel Chem

Cushion Type:

Oil API:

deg API

Mud Weight: 9.00 lb/gal

Cushion Length:

ft

Water Salinity:

ppm

Viscosity: 51.00 sec/qt

Cushion Volume:

bbbl

Water Loss: 7.99 in<sup>3</sup>

Gas Cushion Type:

Resistivity: 0.00 ohm.m

Gas Cushion Pressure:

psig

Salinity: 500.00 ppm

Filter Cake: 1.00 inches

## Recovery Information

Recovery Table

Length ft	Description	Volume bbl
21.00	OCM 80% <sub>m</sub> , 20% <sub>o</sub>	0.103
335.00	GO 60% <sub>g</sub> , 40% <sub>o</sub>	3.777

Total Length: 356.00 ft

Total Volume: 3.880 bbl

Num Fluid Samples: 0

Num Gas Bombs: 0

Serial #:

Laboratory Name:

Laboratory Location:

Recovery Comments:

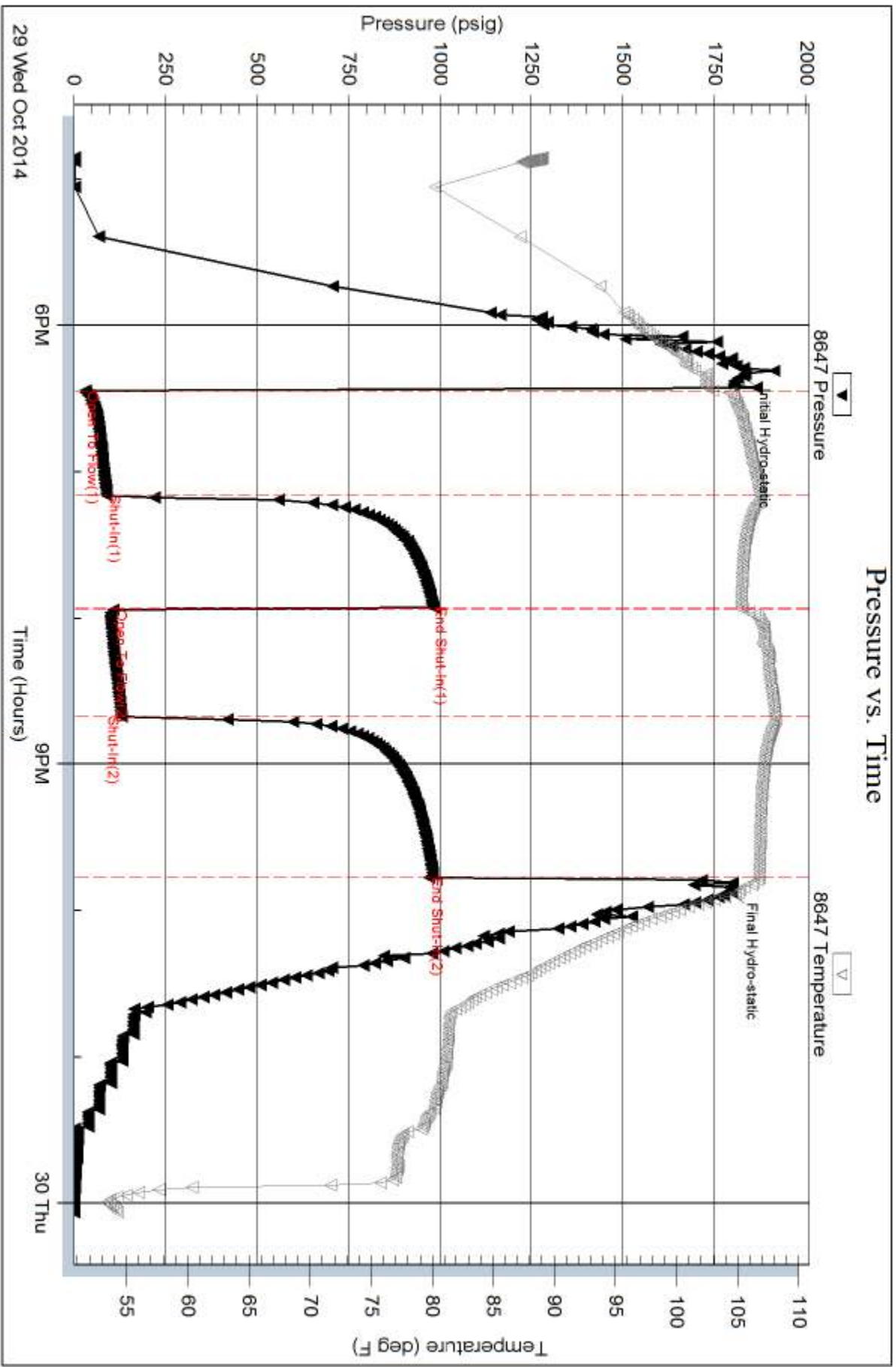
Serial #: 8647

Inside

Black Diamond Oil Inc.

Glennmeier A #1

DST Test Number: 3



Trilobite Testing, Inc

Ref. No: 60746

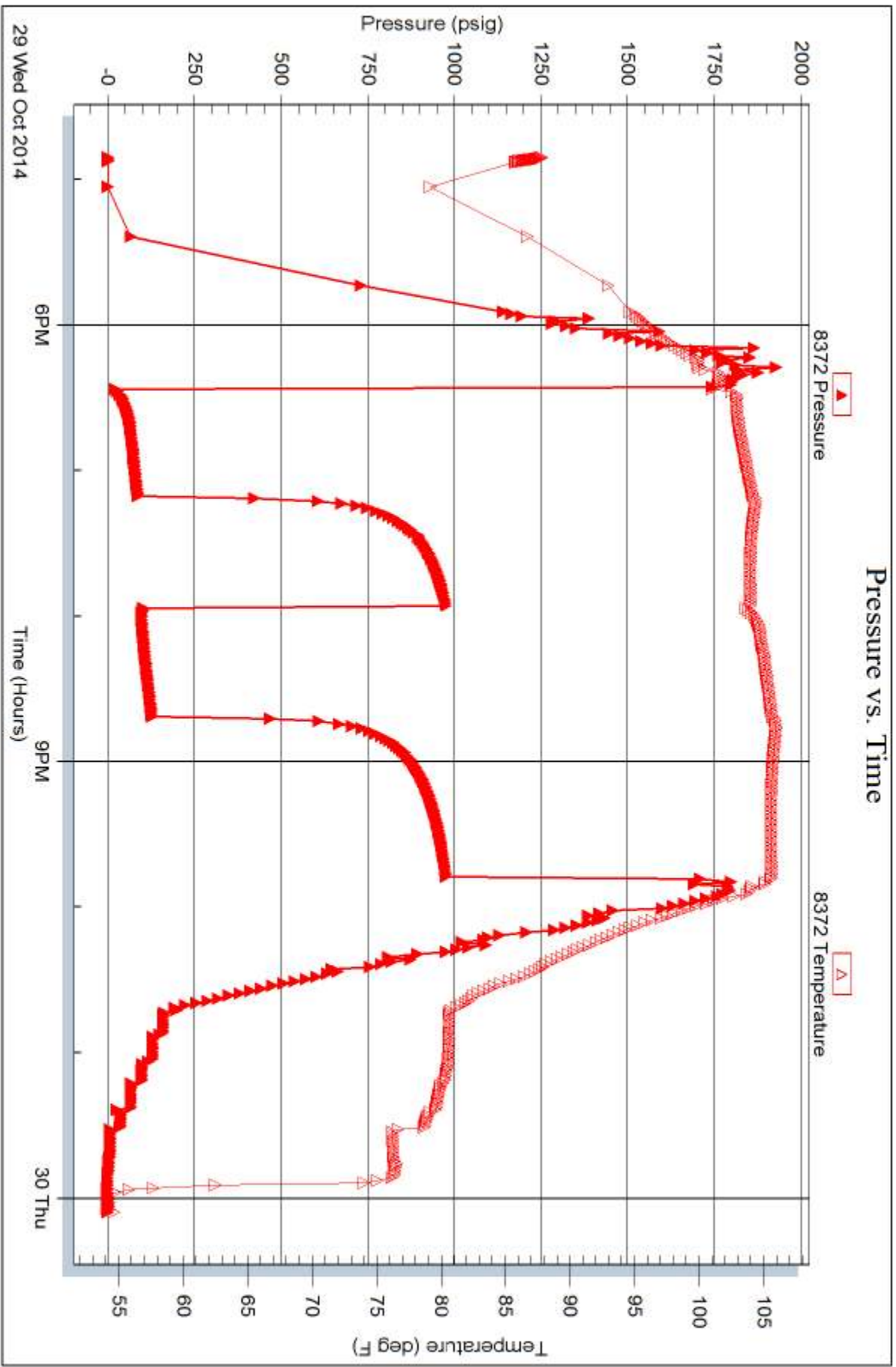
Printed: 2014, 10, 31 @ 14:00:55

Serial #: 8372

Outside Black Diamond Oil Inc.

Glennmeier A #1

DST Test Number: 3



Trilobite Testing, Inc

Ref. No: 60746

Printed: 2014, 10, 31 @ 14:00:55



# TRILOBITE TESTING INC.

1515 Commerce Parkway • Hays, Kansas 67601

## Test Ticket

NO. 60744

4/10

Well Name & No. Glennemeier A #1 Test No. 1 Date 10-27-14  
 Company Black Diamond Oil Inc. Elevation 2260 KB 2255 GL  
 Address P.O. Box 641 Hays, KS 67601  
 Co. Rep / Geo. Richard Bell Rig WW #6  
 Location: Sec. 21 Twp. 5S Rge. 21W Co. Norton State KS

Interval Tested 3414-3476 Zone Tested Toronto + LKC "A"  
 Anchor Length 62' Drill Pipe Run 3297 Mud Wt. 8.8  
 Top Packer Depth 3409 Drill Collars Run 122.21 Vis 57  
 Bottom Packer Depth 3414 Wt. Pipe Run — WL 8.8  
 Total Depth 3476 Chlorides 500 ppm System LCM 2 1/2  
 Blow Description IF- Opened w/ surface blow, didn't build.  
ISI- No Return  
FF- No Blow  
FSI- No Return

Rec	Feet of	%gas	%oil	%water	%mud
55	mud			100	

Rec Total 55 BHT 100 Gravity \_\_\_\_\_ API RW \_\_\_\_\_ @ \_\_\_\_\_ °F Chlorides \_\_\_\_\_ ppm

(A) Initial Hydrostatic 1648  Test 1150 T-On Location 10:51 PM  
 (B) First Initial Flow 17  Jars N/A T-Started 11:12 PM  
 (C) First Final Flow 29  Safety Joint N/A T-Open 1:45 AM  
 (D) Initial Shut-In 1053  Circ Sub \_\_\_\_\_ T-Pulled 3:45 AM  
 (E) Second Initial Flow 32  Hourly Standby \_\_\_\_\_ T-Out 5:40 AM  
 (F) Second Final Flow 43  Mileage 136 R.T 210.80 Comments Rotated 270°  
 (G) Final Shut-In 1012  Sampler \_\_\_\_\_  
 (H) Final Hydrostatic 1632  Straddle \_\_\_\_\_  Ruined Shale Packer \_\_\_\_\_  
 Shale Packer \_\_\_\_\_  Ruined Packer \_\_\_\_\_  
 Extra Packer \_\_\_\_\_  Extra Copies \_\_\_\_\_  
 Initial Open 30  Extra Recorder \_\_\_\_\_ Sub Total 0  
 Initial Shut-In 30  Day Standby \_\_\_\_\_ Total 1360.80  
 Final Flow 30  Accessibility \_\_\_\_\_ MP/DST Disc't \_\_\_\_\_  
 Final Shut-In 30 Sub Total 1360.80

Approved By Richard Bell Our Representative Barb Oit

Trilobite Testing Inc. shall not be liable for damaged of any kind of the property or personnel of the one for whom a test is made, or for any loss suffered or sustained, directly or indirectly, through the use of its equipment, or its statements or opinion concerning the results of any test, tools lost or damaged in the hole shall be paid for at cost by the party for whom the test is made.





# TRILOBITE TESTING INC.

1515 Commerce Parkway • Hays, Kansas 67601

## Test Ticket

NO. 60745

4/10

Well Name & No. Glennemeier A #1 Test No. 2 Date 10-29-14  
 Company Black Diamond Oil Inc. Elevation 2260 KB 2255 GL  
 Address P.O. Box 641 Hays, KS 67601  
 Co. Rep / Geo. Richard Bell Rig WW #6  
 Location: Sec. 21 Twp. 5S Rge. 21W Co. Norton State KS

Interval Tested 3613-3635 Zone Tested LKC "12"  
 Anchor Length 22' Drill Pipe Run 3484 Mud Wt. 9.4  
 Top Packer Depth 3608 Drill Collars Run 122.21 Vis 52  
 Bottom Packer Depth 3613- Wt. Pipe Run — WL 7.6  
 Total Depth 3635 Chlorides 500 ppm System LCM 2

Blow Description IF - Opened w/ surface blow, didn't build  
ISI - No Return  
FF - No Blow  
FSI - No Return

Rec	Feet of	%gas	%oil	%water	%mud
<u>1</u>	<u>Mud</u>			<u>100</u>	
Rec	Feet of	%gas	%oil	%water	%mud
Rec	Feet of	%gas	%oil	%water	%mud
Rec	Feet of	%gas	%oil	%water	%mud
Rec	Feet of	%gas	%oil	%water	%mud

Rec Total 1 BHT 101 Gravity \_\_\_\_\_ API RW \_\_\_\_\_ @ \_\_\_\_\_ °F Chlorides \_\_\_\_\_ ppm

(A) Initial Hydrostatic 1806  Test 1150 T-On Location 12:15 AM  
 (B) First Initial Flow 15  Jars \_\_\_\_\_ T-Started 12:21 AM  
 (C) First Final Flow 17  Safety Joint \_\_\_\_\_ T-Open 2:45 AM  
 (D) Initial Shut-In 152  Circ Sub \_\_\_\_\_ T-Pulled 4:45 AM  
 (E) Second Initial Flow 16  Hourly Standby \_\_\_\_\_ T-Out 6:27 AM  
 (F) Second Final Flow 17  Mileage 136 R.T. 210.80 Comments \_\_\_\_\_  
 (G) Final Shut-In 70  Sampler \_\_\_\_\_  
 (H) Final Hydrostatic 1720  Straddle \_\_\_\_\_

Ruined Shale Packer \_\_\_\_\_  
 Ruined Packer \_\_\_\_\_  
 Extra Copies \_\_\_\_\_  
 Initial Open 30  
 Initial Shut-In 30  
 Final Flow 30  
 Final Shut-In 30  
 Extra Packer \_\_\_\_\_  
 Extra Recorder \_\_\_\_\_  
 Day Standby \_\_\_\_\_  
 Accessibility \_\_\_\_\_  
 Sub Total 1360.80  
 Total 1360.80  
 MP/DST Disc't \_\_\_\_\_

Approved By Richard Bell Our Representative Bud At

Trilobite Testing Inc. shall not be liable for damaged of any kind of the property or personnel of the one for whom a test is made, or for any loss suffered or sustained, directly or indirectly, through the use of its equipment, or its statements or opinion concerning the results of any test, tools lost or damaged in the hole shall be paid for at cost by the party for whom the test is made.



# TRILOBITE TESTING INC.

1515 Commerce Parkway • Hays, Kansas 67601

## Test Ticket

NO. **60746**

Well Name & No. Glennemeier A #1 Test No. 3 Date 10-29-14  
 Company Black Diamond Oil Inc. Elevation 2260 KB 2255 GL  
 Address P.O. Box 641 Hays, KS 67601  
 Co. Rep / Geo. Richard Bell Rig WW #6  
 Location: Sec. 21 Twp. 5S Rge. 21W Co. Norton State KS

Interval Tested 3689 - 3699 Zone Tested Bsl Sand  
 Anchor Length 10' Drill Pipe Run 3574 Mud Wt. 9.4  
 Top Packer Depth 3684 Drill Collars Run 122.21 Vis 51  
 Bottom Packer Depth 3689 Wt. Pipe Run — WL 8  
 Total Depth 3699 Chlorides 500 ppm System LCM 2  
 Blow Description IF - Opened w/ surface blow, built to B.o.B in 35 min.  
ISI - No Return  
FF - Blow built to 10' over the 45 min.  
FSI - No Return

Rec	Feet of	%gas	%oil	%water	%mud
<u>335</u>	<u>60</u>	<u>60</u>	<u>40</u>		
<u>21</u>	<u>0cm</u>		<u>20</u>		<u>80</u>

Rec Total 356 BHT 106 Gravity N/A API RW @ — °F Chlorides — ppm  
 (A) Initial Hydrostatic 1829  Test 1150 T-On Location 4:43 PM  
 (B) First Initial Flow 30  Jars — T-Started 4:51 PM  
 (C) First Final Flow 89  Safety Joint — T-Open 6:26 PM  
 (D) Initial Shut-In 980  Circ Sub — T-Pulled 9:41 PM  
 (E) Second Initial Flow 108  Hourly Standby — T-Out 12:06 AM  
 (F) Second Final Flow 129  Mileage 136 R.T 210.80 Comments Picked up tool  
 (G) Final Shut-In 969  Sampler — after test @ 12:45 AM  
 (H) Final Hydrostatic 1793  Straddle —  Ruined Shale Packer —  
 Shale Packer —  Ruined Packer —  
 Extra Packer —  Extra Copies —  
 Initial Open 45  Extra Recorder — Sub Total 0  
 Initial Shut-In 45  Day Standby — Total 1360.80  
 Final Flow 45  Accessibility — MP/DST Disc't —  
 Final Shut-In 60 Sub Total 1360.80

Approved By Richard Bell Our Representative Bmd Oil

Trilobite Testing Inc. shall not be liable for damaged of any kind of the property or personnel of the one for whom a test is made, or for any loss suffered or sustained, directly or indirectly, through the use of its equipment, or its statements or opinion concerning the results of any test, tools lost or damaged in the hole shall be paid for at cost by the party for whom the test is made.