



**CONSOLIDATED**  
Oil Well Services, LLC

REMIT TO

Consolidated Oil Well Services, LLC  
Dept: 970  
P.O. Box 4346  
Houston, TX 77210-4346

MAIN OFFICE

P.O. Box 884  
Chanute, KS 66720  
620/431-9210, 1-800/467-8676  
Fax 620/431-0012

Invoice

Invoice# 802532

Invoice Date: 12/10/14

Terms: Net 30

Page 1

LARIO OIL & GAS

P.O. BOX 1093  
GARDEN CITY KS 637846  
USA  
3162655611

SOCOL OF SKY 1-9  
DRILLING  
AFE 14-280  
12/12/14 MK

Part No	Description	Quantity	Unit Price	Discount(%)	Total
5401S	Cement Pump Truck - Surface	1.000	1,150.0000	15.000	977.50
5406	Mileage Charge	40.000	5.2500	15.000	178.50
5407A	Ton Mileage Delivery Charge	1.000	987.0000	15.000	838.95
1104S	Class A Cement	300.000	18.5500	15.000	4,730.25
1102	Calcium Chloride (50#)	846.000	0.9400	15.000	675.95
1118B	Premium Gel / Bentonite	564.000	0.2700	15.000	129.44
4432	8 5/8 Wooden Plug	1.000	100.7500	15.000	85.64

Subtotal 8,960.27

Discounted Amount 1,344.04

SubTotal After Discount 7,616.23

Amount Due 9,499.25 If paid after 01/09/15

Tax: 458.14

Total: 8,074.37

*Handwritten signature*  
DEC 15 2014  
*Handwritten initials*



**CONSOLIDATED**  
Oil Well Services, LLC

PO Box 884, Chanute, KS 66720  
620-431-9210 or 800-467-8676

1336  
1284

TICKET NUMBER 47834  
LOCATION Dakley Krc  
FOREMAN Cory Davis  
Jerry V.

**FIELD TICKET & TREATMENT REPORT**  
**CEMENT INVOICE #802532**

hrs.

DATE	CUSTOMER #	WELL NAME & NUMBER	SECTION	TOWNSHIP	RANGE	COUNTY
12/2/14	4793	Socolofsky	9	17S	31W	Scott
CUSTOMER			TRUCK #		DRIVER	
Lario			399 /		Jeremy R.	
MAILING ADDRESS			530 /		Lance R.	
CITY			STATE		ZIP CODE	

JOB TYPE Su/Paw HOLE SIZE 12 1/4 HOLE DEPTH 418 CASING SIZE & WEIGHT 8 5/8 24#  
 CASING DEPTH 418 DRILL PIPE \_\_\_\_\_ TUBING \_\_\_\_\_ OTHER \_\_\_\_\_  
 SLURRY WEIGHT 14% SLURRY VOL \_\_\_\_\_ WATER gal/sk \_\_\_\_\_ CEMENT LEFT in CASING 20'  
 DISPLACEMENT 25.35 DISPLACEMENT PSI \_\_\_\_\_ MIX PSI \_\_\_\_\_ RATE \_\_\_\_\_

REMARKS: Safety meeting Rig up on H2 Drilling Run casing Break circulation with Rig Pump Hook up to pump truck mix 300 sks. com 3% cc. 2% Gel. wash up pump and lines Displace 25.35 bbls of water shut in Rig down

Cement did circulate

Approx 5 bbls to pit

Thanks Cory Davis

ACCOUNT CODE	QUANTITY or UNITS	DESCRIPTION of SERVICES or PRODUCT	UNIT PRICE	TOTAL
5401 S	1	PUMP CHARGE	1150.00	1150.00
5406	40	MILEAGE	5.25	210.00
5407 A	14.1	Ton mileage Delivery	1.75	987.00
11045	300 sks.	Class A Cement	18.55	5565.00
1102	846 #	Calcium chloride	.94	795.24
11188	564 #	Bentonite (Gel)	.27	152.28
4432	1	8 5/8 Plug	100.75	100.75
			subtotal	8960.27
			15% Gas	1344.04
			sub total	7616.23
			SALES TAX	458.13
			ESTIMATED TOTAL	8074.36

Revin 3737

AUTHORIZATION Steven Craig TITLE Tool Pusher DATE 12/2/14

I acknowledge that the payment terms, unless specifically amended in writing on the front of the form or in the customer's account records, at our office, and conditions of service on the back of this form are in effect for services identified on this form.

## TERMS

In consideration of the prices to be charged for Consolidated Oil Well Services, LLC (COWS) services, equipment and products and for the performance of services and supplying of materials, Customer agrees to the following terms and conditions.

**Terms.** Cash in advance unless satisfactory credit is established. On credit sales, invoices are payable within 30 days of the invoice date. On all invoices not paid within 30 days, Customer agrees to pay COWS interest at the rate of 18% per annum or the maximum rate allowed by law, whichever is higher. In the event COWS retains an attorney to pursue collection of any account, Customer agrees to pay all collection costs and attorney's fees incurred by COWS.

Any applicable federal, state or local sales, use occupation, consumer's or emergency taxes shall be added to the quoted price. All process license fees required to be paid to others will be added to the scheduled prices.

All COWS' prices are subject to change without notice.

## SERVICE CONDITIONS

Customer warrants that the well is in proper condition to receive the services, equipment, products and materials to be supplied by COWS. The Customer shall at all time have complete care, custody, and control of the well, the drilling and production equipment at the well, and the premises about the well. A responsible representative of the Customer shall be present to specify depths, pressures, or materials used for any service which is to be performed.

(a) COWS shall not be responsible for any claim, cause of action or demand (hereinafter referred to as a 'claim') for damage to property, or injury to or death of employees and representatives, of Customer or the well owner (if different from Customer), unless such damage, injury or death is caused by the willful misconduct or gross negligence of COWS, including but not limited to sub-surface damage and surface damage arising from sub-surface damage.

(b) Unless a claim is the result of the sole willful misconduct or gross negligence of COWS, Customer shall be responsible for and indemnify and hold COWS harmless from any claim for: (1) reservoir loss or damage, or property damage resulting from sub-surface pressure, losing control of the well and/or a well blowout; (2) damages as a result of a subsurface trespass, or an action in the nature thereof, arising from a service operation performed by COWS; (3) injury to or death of persons, other than employees of COWS, or damage to property (including, but not limited to, injury to the well), or any damages whatsoever, irrespective of cause, growing out of or in any way connected with the use of radioactive material in the well hole; and (4) well damage or reservoir damage caused by (i) loss of circulation, cement invasion, cement misplacement, pumping cement or cement plugs on wells with loss of circulation, including the failure to displace plug to proper depth, (ii) sub-surface pressure and resulting failure to complete pumping of cement or cement plug, including dehydration of cement slurry or flashing, plugged float shoe, annulus bridging or plugging, or (iii) down hole tools being lost or left in the well, or becoming stuck in the well for any reason and by any cause. COWS may furnish down hole tools and may supply supervision for the running and placement of such tools but will not be liable for any damage, loss or result caused by the use of such tools.

Furthermore, Customer will be responsible for the cost to replace such tools if they are lost or left in the well.

(c) COWS makes no guarantee of the effectiveness of any COWS' products, supplies or materials, or the results of any COWS' treatment or services.

(d) Because of the uncertainty of variable well conditions and the necessity of relying on facts and supporting services furnished by others, COWS is unable to guarantee the accuracy of any chart interpretation, research analysis, job recommendation or other data furnished by COWS. COWS' personnel will use their best efforts in gathering such information and their best judgement in interpreting it, but Customer agrees that COWS shall not be responsible for any damage arising from the use of such information except where due to COWS' gross negligence or willful misconduct in the preparation or furnishing of it.

(e) COWS may buy and re-sell to Customer down hole equipment, including but not limited to float equipment, DV tools, port collars, type A & B packers, and Customer agrees that COWS is not an agent or dealer for the companies who manufacture such items, and further agrees that Customer shall be solely responsible for and indemnify COWS against any claim with regard to the effectiveness, malfunction of, or functionality of such items.

## WARRANTIES - LIMITATION OF LIABILITY

COWS warrants title to the products, supplies and materials, and that the same are free from defects in workmanship and materials. THERE ARE NO OTHER WARRANTIES, EXPRESS OR IMPLIED, NOR ANY WARRANTY OF MERCHANTABILITY OR FITNESS FOR PURPOSE, WHICH EXTEND BEYOND THOSE STATED IN THE IMMEDIATELY PRECEDING SENTENCE. COWS's liability and Customer's exclusive remedy in any claim (whether in contract, tort, breach of warranty or otherwise,) arising out of the sale or use of any COWS' products, supplies, materials or services is expressly limited to the replacement of such products, supplies, materials or services or their return to COWS or, at COWS' option, an allowance to Customer of credit for the cost of such items.

Customer waives and releases all claims against COWS for any special, incidental, indirect, consequential or punitive damages.



# INVOICE

PO Box 93999  
Southlake, TX 76092

Invoice Number: 147617  
Invoice Date: Dec 13, 2014  
Page: 1

Voice: (817) 546-7282  
Fax: (817) 246-3361

Federal Tax I.D.#: 20-8651475

<b>Bill To:</b>
Lario Oil & Gas Co. Lario Oil & Gas Co. P.O. Box 1093 Garden City, KS 67846

Customer ID	Field Ticket #	Payment Terms	
Lario	64841	Net 30 Days	
Job Location	Camp Location	Service Date	Due Date
KS1-02	Oakley	Dec 13, 2014	1/12/15

Quantity	Item	Description	Unit Price	Amount
1.00	WELL NAME	Socolofsky #1-9		
110.00	CEMENT MATERIALS	ASC	23.50	2,585.00
400.00	CEMENT MATERIALS	Light Weight	19.89	7,956.00
550.00	CEMENT MATERIALS	Gilsonite	0.98	539.00
100.00	CEMENT MATERIALS	Flo Seal	2.97	297.00
12.00	CEMENT MATERIALS	Mud Flush	41.09	493.08
593.32	CEMENT SERVICE	Cubic Feet Charge	2.48	1,471.43
1,114.65	CEMENT SERVICE	Ton Mileage Charge	2.75	3,065.29
1.00	CEMENT SERVICE	Production -- Two Stage	2,765.75	2,765.75
45.00	CEMENT SERVICE	Pump Truck Mileage	7.70	346.50
1.00	CEMENT SERVICE	Manifold Head Rental	275.00	275.00
45.00	CEMENT SERVICE	Light Vehicle Mileage	4.40	198.00
1.00	EQUIPMENT SALES	5-1/2 D V Tool	5,335.00	5,335.00
1.00	EQUIPMENT SALES	5-1/2 AFU Float Shoe	545.00	545.00
1.00	EQUIPMENT SALES	5-1/2 Latch Down Flex Assembly	660.00	660.00
16.00	EQUIPMENT SALES	5-1/2 Centralizer	57.00	912.00
1.00	EQUIPMENT SALES	5-1/2 Basket	395.00	395.00
1.00	CEMENT SUPERVISOR	Paul Beaver		
1.00	EQUIPMENT OPERATOR	Tyler Flipse		
1.00	EQUIPMENT OPERATOR	Ben Newell		

Handwritten notes: *Drilling abc 14-280*, *12-22-14 JK*, *ACP*, *DEC 23 2014*, *DB*, *75*

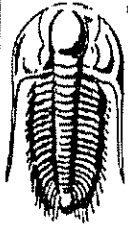
ALL PRICES ARE NET, PAYABLE 30 DAYS FOLLOWING DATE OF INVOICE. 1 1/2% CHARGED THEREAFTER. IF ACCOUNT IS CURRENT, TAKE DISCOUNT OF

\$ 7,959.36

ONLY IF PAID ON OR BEFORE Jan 12, 2015

Subtotal	27,839.05
Sales Tax	1,606.94
Total Invoice Amount	29,445.99
Payment/Credit Applied	
<b>TOTAL</b>	<b>29,445.99</b>





**TRILOBITE  
TESTING, INC**

## DRILL STEM TEST REPORT

Lario Oil & Gas

Sec. 9 - 17 s. - 31 w. - Scott

301 S. Market St.  
Wichita Ks.  
67202

Socolofsky # 1-9

Job Ticket: 62494

DST#: 1

ATTN: Steve Davis

Test Start: 2014.12.06 @ 06:02:00

### GENERAL INFORMATION:

Formation: Lans. " B"

Deviated: No Whipstock: ft (KB)

Time Tool Opened: 09:23:25

Time Test Ended: 14:56:40

Test Type: Conventional Bottom Hole (Initial)

Tester: Bob Hamel

Unit No: 72

Interval: 3968.00 ft (KB) To 3993.00 ft (KB) (TVD)

Total Depth: 3993.00 ft (KB) (TVD)

Hole Diameter: 7.88 inches Hole Condition: Fair

Reference Elevations: 2959.00 ft (KB)

2951.00 ft (CF)

KB to GR/CF: 8.00 ft

Serial #: 6772

Inside

Press@RunDepth: 67.73 psig @ 3971.00 ft (KB)

Start Date: 2014.12.06

End Date:

2014.12.06

Capacity: 8000.00 psig

Last Calib.:

2014.12.06

Start Time: 06:02:15

End Time:

14:56:40

Time On Btm: 2014.12.06 @ 09:22:55

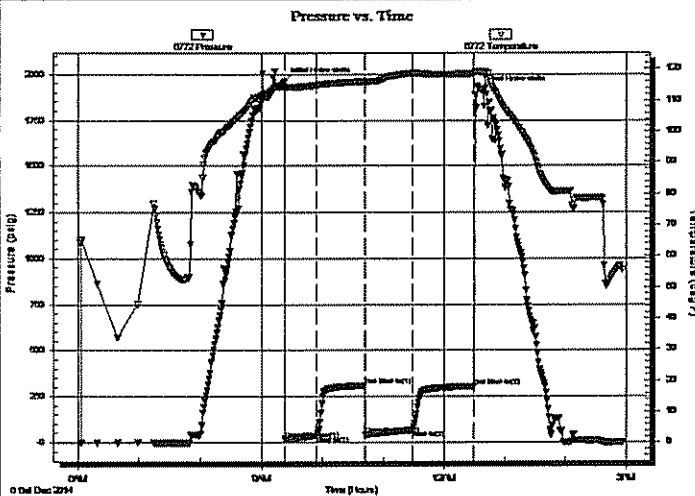
Time Off Btm: 2014.12.06 @ 12:36:24

TEST COMMENT: I.F. - 30 - 1/4" INT. BLOW BUILT TO 3 1/4"

I.S.I - 45 - NO B.B.

F.F. - 45 - 1/8" INT. BLOW NO BUILD

F.S.I. - 60 - NO B.B.



### PRESSURE SUMMARY

Time (Min.)	Pressure (psig)	Temp (deg F)	Annotation
0	1959.32	114.60	Initial Hydro-static
1	17.80	113.88	Open To Flow (1)
32	37.77	114.87	Shut-In(1)
79	308.86	116.02	End Shut-In(1)
80	41.77	115.95	Open To Flow (2)
126	67.73	118.66	Shut-In(2)
187	305.29	118.48	End Shut-In(2)
194	1914.79	119.05	Final Hydro-static

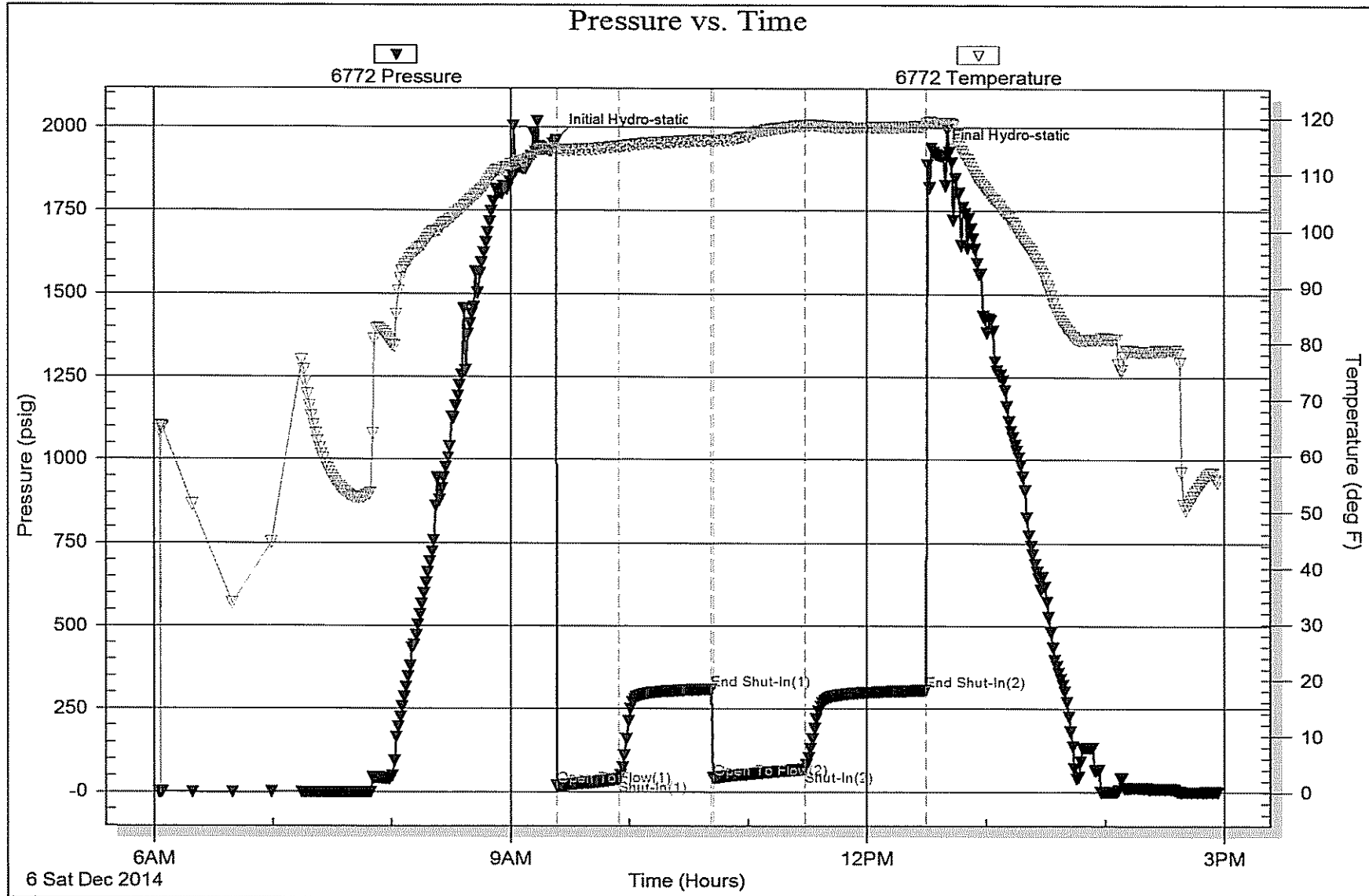
### Recovery

Length (ft)	Description	Volume (bbl)
63.00	H <sub>2</sub> O,C,M, 20%O 80%M	0.31
130.00	C/O 100%	0.64

### Gas Rates

	Choke (inches)	Pressure (psig)	Gas Rate (Mcf/d)





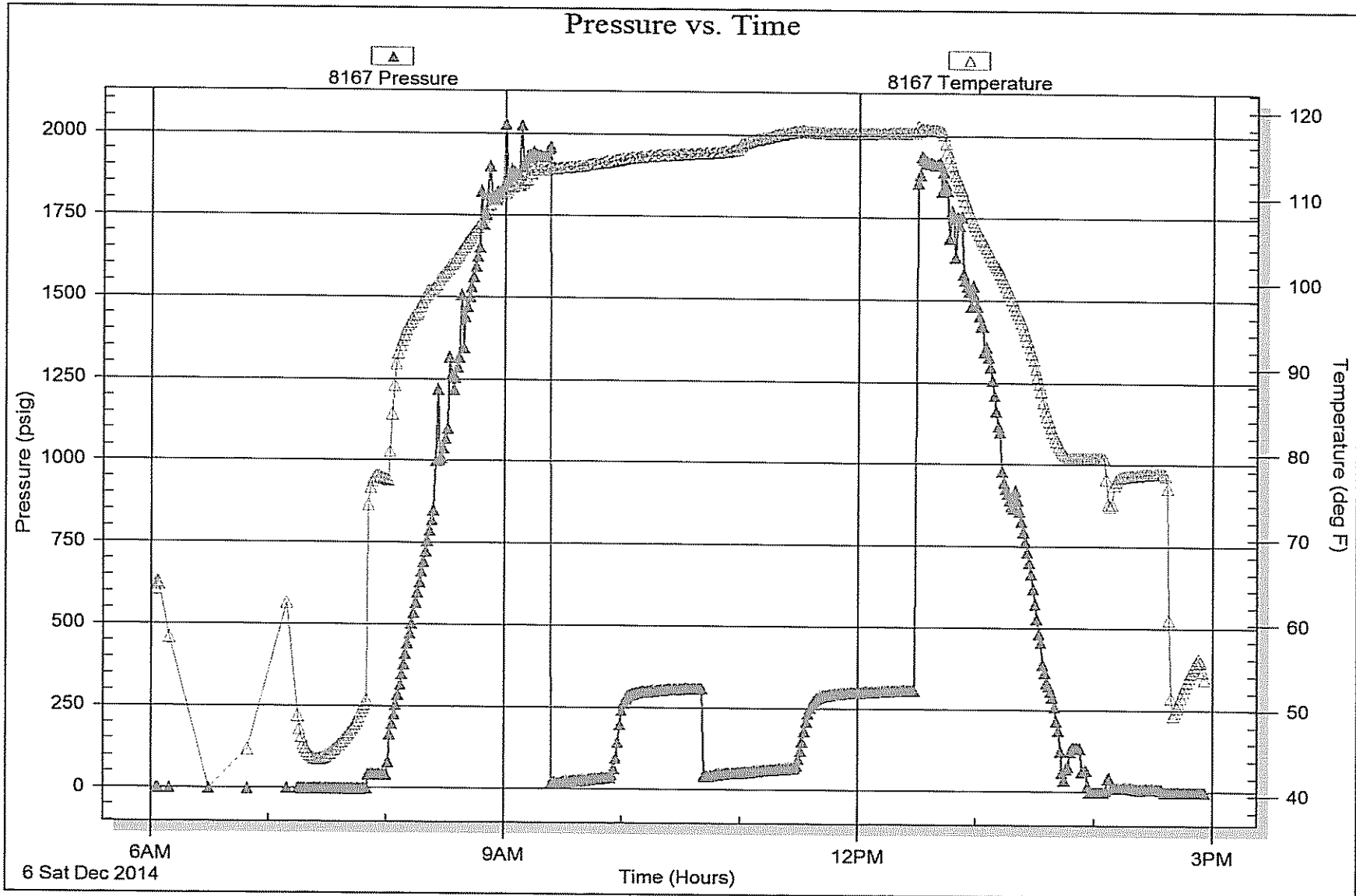


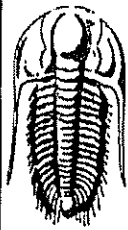
Serial #: 8167

Outside Lario Oil & Gas

Socolofsky # 1-9

DST Test Number: 1





**TRILOBITE  
TESTING, INC.**

# DRILL STEM TEST REPORT

Lario Oil & Gas  
301 S. Market St.  
Wichita Ks.  
67202  
ATTN: Steve Davis

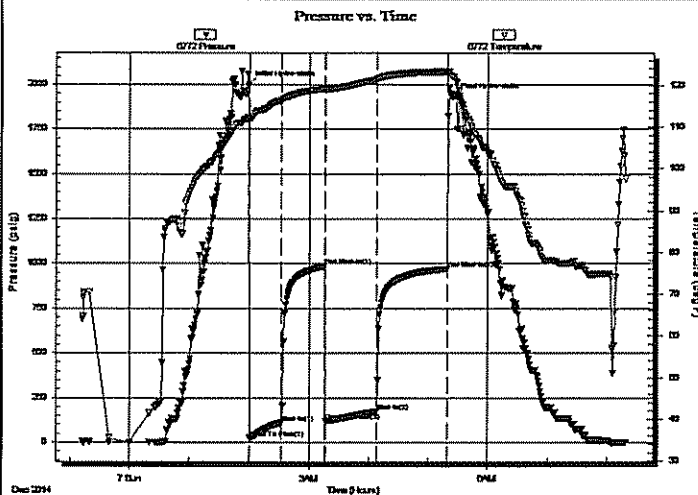
**Sec. 9 - 17 s. - 31 w. - Scott**  
**Socolofsky # 1-9**  
Job Ticket: 62495      DST#: 2  
Test Start: 2014.12.06 @ 23:13:00

## GENERAL INFORMATION:

Formation: **LANS. " D "**  
Deviated: No    Whipstock:                      ft (KB)  
Time Tool Opened: 02:00:45  
Time Test Ended: 08:19:00  
Interval: **4026.00 ft (KB) To 4043.00 ft (KB) (TVD)**  
Total Depth: **4043.00 ft (KB) (TVD)**  
Hole Diameter: **7.88 inches** Hole Condition: Fair  
Test Type: Conventional Bottom Hole (Reset)  
Tester: Bob Hamel  
Unit No: 72  
Reference Elevations: 2959.00 ft (KB)  
2951.00 ft (CF)  
KB to GR/CF: 8.00 ft

**Serial #: 6772**      Inside  
Press@RunDepth: 172.64 psig @ 4029.00 ft (KB)      Capacity: 8000.00 psig  
Start Date: 2014.12.06      End Date: 2014.12.07      Last Calib.: 2014.12.07  
Start Time: 23:13:05      End Time: 08:19:00      Time On Btm: 2014.12.07 @ 01:59:30  
Time Off Btm: 2014.12.07 @ 05:25:30

**TEST COMMENT:** I.F. - 30 - 1/2" INT. BLOW BUILT TO B.O.B. IN 17 MIN.  
I.S.I. - 45 - W.S.B.B. STARTED @ 6 MIN. BUILT TO 1"  
F.F. - 45 - 1" INT. BLOW BUILT TO B.O.B. IN 15 MIN.  
F.S.I. - 60 - W.S.B.B. STARTED @ 5 MIN BUILT TO 1"



## PRESSURE SUMMARY

Time (Min.)	Pressure (psig)	Temp (deg F)	Annotation
0	1999.02	112.20	Initial Hydro-static
2	23.74	111.96	Open To Flow (1)
34	110.22	116.34	Shut-In(1)
77	985.88	119.13	End Shut-In(1)
78	118.54	118.90	Open To Flow (2)
129	172.64	121.40	Shut-In(2)
200	971.32	123.28	End Shut-In(2)
206	1929.77	121.99	Final Hydro-static

## Recovery

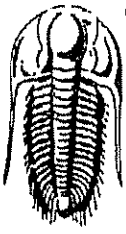
Length (ft)	Description	Volume (bbl)
5.00	H <sub>2</sub> O,C,M, 20%O 80%M	0.02
373.00	C/O 100%	2.98

\* Recovery from multiple tests

## Gas Rates

	Choke (inches)	Pressure (psig)	Gas Rate (Mcf/d)





**TRILOBITE**  
TESTING, INC.

## DRILL STEM TEST REPORT

FLUID SUMMARY

Lario Oil & Gas

Sec. 9 - 17 s. - 31 w. - Scott

301 S. Market St.  
Wichita Ks.  
67202

Socolofsky # 1-9

Job Ticket: 62495

DST#: 2

ATTN: Steve Davis

Test Start: 2014.12.06 @ 23:13:00

### Mud and Cushion Information

Mud Type: Gel Chem

Cushion Type:

Oil API:

deg API

Mud Weight: 9.00 lb/gal

Cushion Length:

ft

Water Salinity:

ppm

Viscosity: 52.00 sec/qt

Cushion Volume:

bbbl

Water Loss: 7.20 in<sup>3</sup>

Gas Cushion Type:

Resistivity: 0.00 ohm.m

Gas Cushion Pressure:

psig

Salinity: 3200.00 ppm

Filter Cake: 1.00 inches

### Recovery Information

Recovery Table

Length ft	Description	Volume bbbl
5.00	H <sub>2</sub> O,C,M, 20%O 80%M	0.025
373.00	C/O 100%	2.982

Total Length: 378.00 ft      Total Volume: 3.007 bbl

Num Fluid Samples: 0

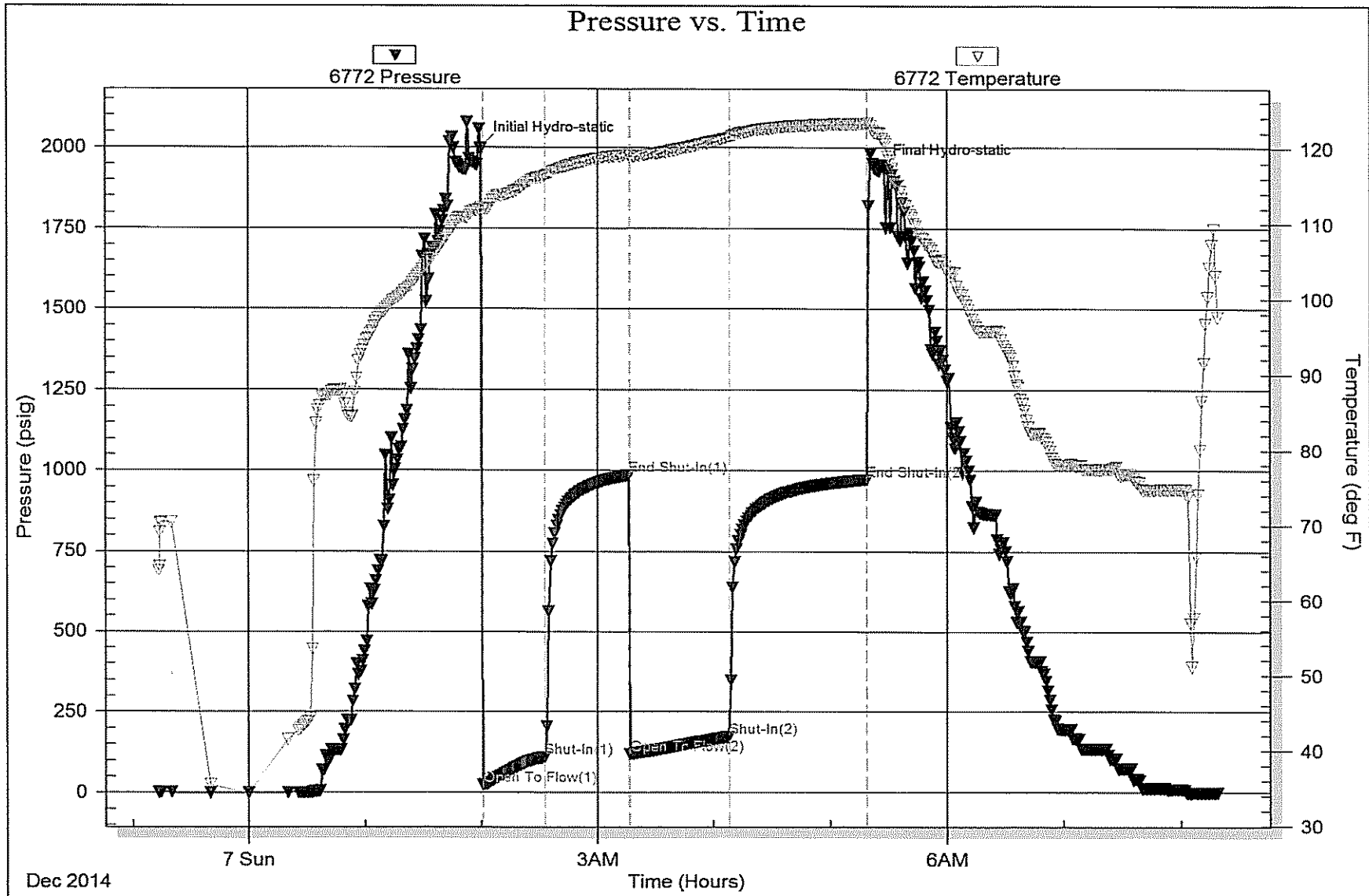
Num Gas Bombs: 0

Serial #:

Laboratory Name:

Laboratory Location:

Recovery Comments: CORRECTED OIL GRAVITY = 32 API @ 60 DEG.







**TRILOBITE  
TESTING, INC.**

## DRILL STEM TEST REPORT

Lario Oil & Gas  
301 S. Market St.  
Wichita Ks.  
67202  
ATTN: Steve Davis

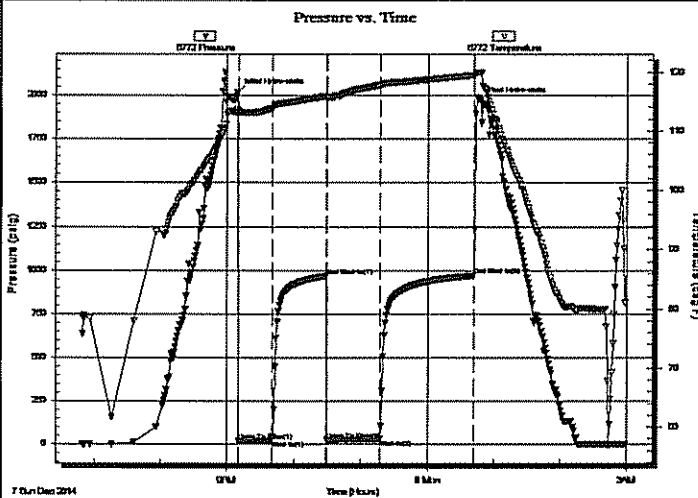
**Sec. 9 - 17 s. - 31 w. - Scott**  
**Socolofsky # 1-9**  
Job Ticket: 62496      DST#: 3  
Test Start: 2014.12.07 @ 18:49:00

### GENERAL INFORMATION:

Formation: **LANSING "G"**  
Deviated: No      Whipstock:      ft (KB)  
Time Tool Opened: 21:09:45  
Time Test Ended: 02:58:45  
Interval: **4122.00 ft (KB) To 4155.00 ft (KB) (TVD)**  
Total Depth: **4155.00 ft (KB) (TVD)**  
Hole Diameter: **7.88 inches** Hole Condition: Fair  
Test Type: Conventional Bottom Hole (Reset)  
Tester: Bob Hamel  
Unit No: 72  
Reference Elevations: 2959.00 ft (KB)  
2951.00 ft (CF)  
KB to GR/CF: 8.00 ft

**Serial #: 6772**      Inside  
Press@RunDepth: 30.89 psig @ 4125.00 ft (KB)      Capacity: 8000.00 psig  
Start Date: 2014.12.07      End Date: 2014.12.08      Last Calib.: 1899.12.30  
Start Time: 18:49:05      End Time: 02:58:44      Time On Btm: 2014.12.07 @ 21:08:45  
Time Off Btm: 2014.12.08 @ 00:47:45

TEST COMMENT: I.F. - 30 - 1/2" INT. BLOW BUILT TO 1"  
I.S.I. - 45 - NO B.B.  
F.F - 45 - 1/8" INT. BLOW NO BUILD  
F.S.I. - 60 - NO B.B.



### PRESSURE SUMMARY

Time (Min.)	Pressure (psig)	Temp (deg F)	Annotation
0	2018.13	113.71	Initial Hydro-static
1	17.30	113.36	Open To Flow (1)
32	22.56	113.83	Shut-in(1)
80	967.09	115.89	End Shut-in(1)
81	24.66	115.67	Open To Flow (2)
128	30.89	117.79	Shut-in(2)
213	969.65	119.48	End Shut-in(2)
219	1970.67	119.98	Final Hydro-static

### Recovery

Length (ft)	Description	Volume (bbl)
10.00	S,O,S,M, 100%M W/ FEW OIL SPECS	0.05

\* Recovery from multiple tests

### Gas Rates

Choke (Inches)	Pressure (psig)	Gas Rate (Mcf/d)



**TRILOBITE  
TESTING, INC.**

## DRILL STEM TEST REPORT

**FLUID SUMMARY**

Lario Oil & Gas

**Sec. 9 - 17 s. - 31 w. - Scott**

301 S. Market St.  
Wichita Ks.  
67202

**Socolofsky # 1-9**

Job Ticket: 62496

**DST#: 3**

ATTN: Steve Davis

Test Start: 2014.12.07 @ 18:49:00

### Mud and Cushion Information

Mud Type: Gel Chem

Cushion Type:

Oil API:

deg API

Mud Weight: 9.00 lb/gal

Cushion Length:

ft

Water Salinity:

ppm

Viscosity: 65.00 sec/qt

Cushion Volume:

bbf

Water Loss: 7.98 in<sup>3</sup>

Gas Cushion Type:

Resistivity: 0.00 ohm.m

Gas Cushion Pressure:

psig

Salinity: 3000.00 ppm

Filter Cake: 1.00 inches

### Recovery Information

Recovery Table

Length ft	Description	Volume bbf
10.00	S,O,S,M, 100%M W/ FEW OIL SPECS	0.049

Total Length: 10.00 ft

Total Volume: 0.049 bbf

Num Fluid Samples: 0

Num Gas Bombs: 0

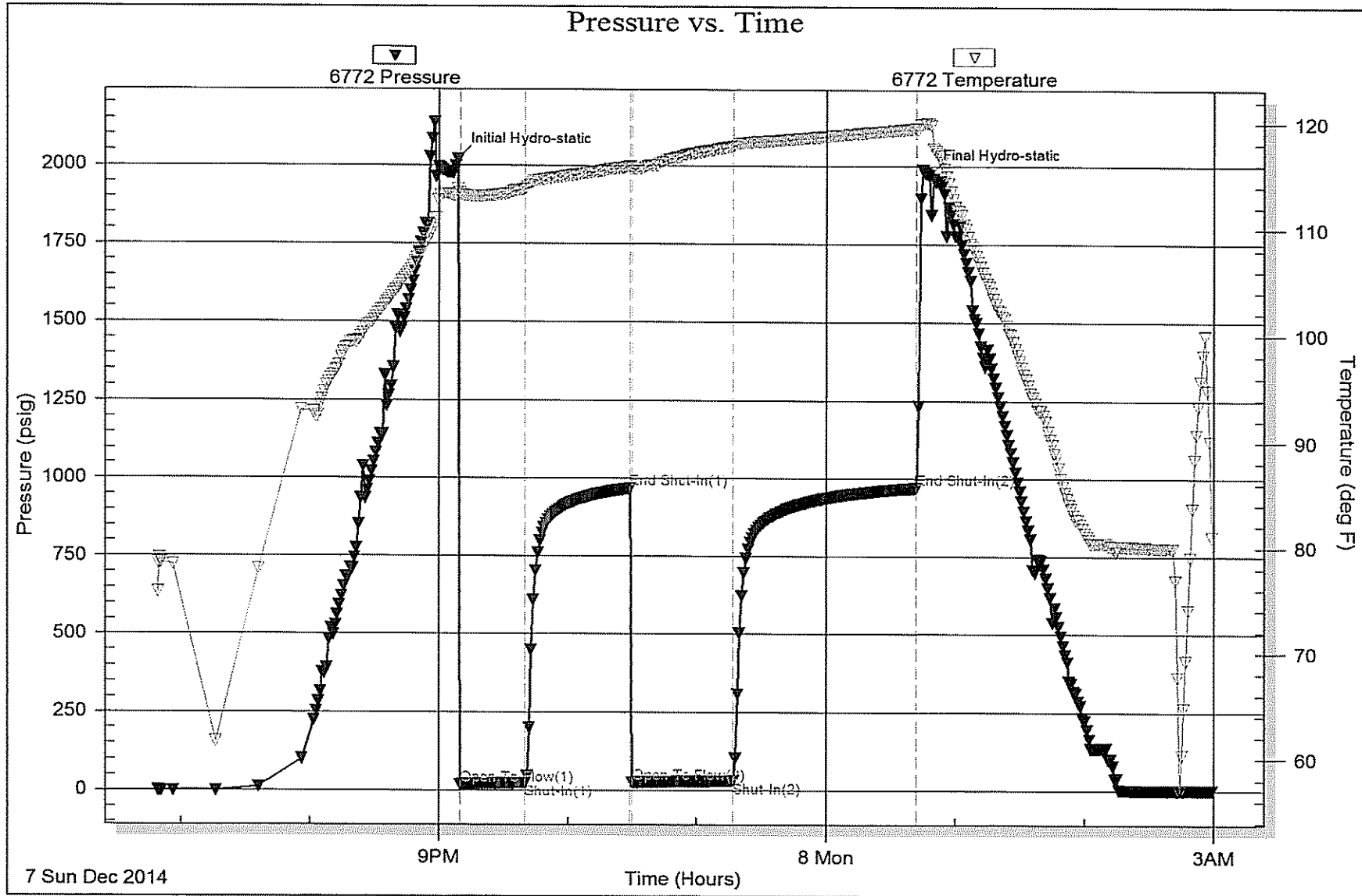
Serial #:

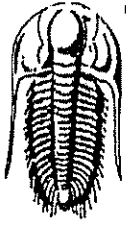
Laboratory Name:

Laboratory Location:

Recovery Comments:







**TRILOBITE TESTING, INC.**

# DRILL STEM TEST REPORT

Lario Oil & Gas

Sec. 9 - 17 s. - 31 w. - Scott

301 S. Market St.  
Wichita Ks.  
67202  
ATTN: Steve Davis

Socolofsky # 1-9

Job Ticket: 62497      DST#: 4

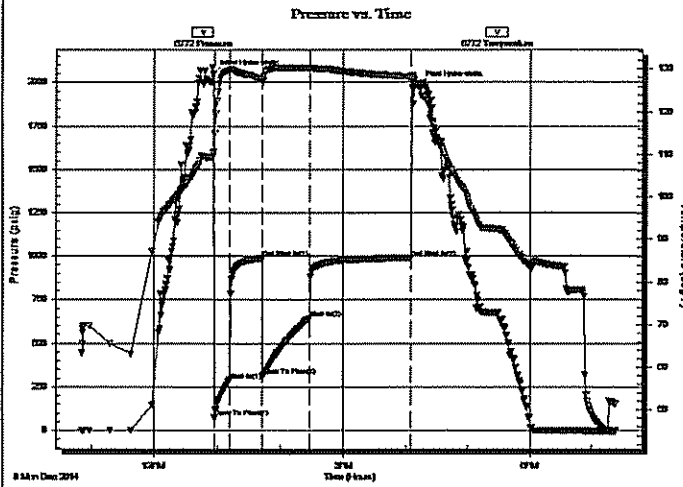
Test Start: 2014.12.08 @ 10:51:00

## GENERAL INFORMATION:

Formation: **LANS. "1"**  
 Deviated: No Whipstock:      ft (KB)  
 Time Tool Opened: 12:57:45  
 Time Test Ended: 19:23:00  
 Interval: **4157.00 ft (KB) To 4182.00 ft (KB) (TVD)**  
 Total Depth: **4182.00 ft (KB) (TVD)**  
 Hole Diameter: **7.88 inches** Hole Condition: Fair  
 Test Type: Conventional Bottom Hole (Reset)  
 Tester: Bob Harmel  
 Unit No: 72  
 Reference Elevations: 2959.00 ft (KB)  
 2951.00 ft (CF)  
 KB to GR/CF: 8.00 ft

**Serial #: 6772**      Inside  
 Press@RunDepth: 645.74 psig @ 4158.00 ft (KB)      Capacity: 8000.00 psig  
 Start Date: 2014.12.08      End Date: 2014.12.08      Last Calib.: 2014.12.08  
 Start Time: 10:51:05      End Time: 19:22:59      Time On Blm: 2014.12.08 @ 12:56:30  
 Time Off Blm: 2014.12.08 @ 16:12:30

TEST COMMENT: I.F. - 15 - 1/2" INT. BLOW BUILT TO B.O.B. IN 2 1/2 MIN.  
 I.S.I - 30 - W.S.B.B. STARTED @ 4 MIN. NO BUILD  
 F.F. - 45 - 1/2" INT. BLOW BUILT TO B.O.B. IN 3 MIN.  
 F.S.I - 90 - NO B.B.



## PRESSURE SUMMARY

Time (Min.)	Pressure (psig)	Temp (deg F)	Annotation
0	2050.14	110.37	Initial Hydro-static
2	76.81	115.08	Open To Flow (1)
16	289.11	129.78	Shut-In(1)
47	988.95	127.75	End Shut-In(1)
47	312.33	127.36	Open To Flow (2)
92	645.74	130.29	Shut-In(2)
189	991.77	128.22	End Shut-In(2)
196	1986.05	126.13	Final Hydro-static

## Recovery

Length (ft)	Description	Volume (bbl)
940.00	S,O,S,W 100%W (FEW OIL SPECS)	10.89
315.00	S,O,C,M,W, 10%O 10%M 80%W	4.42
5.00	C/O 100%	0.07

\* Recovery from multiple tests

## Gas Rates

	Choke (Inches)	Pressure (psig)	Gas Rate (Mcf/d)





**TRILOBITE  
TESTING, INC**

**DRILL STEM TEST REPORT**

**FLUID SUMMARY**

Lario Oil & Gas

**Sec. 9 - 17 s. - 31 w. - Scott**

301 S. Market St.  
Wichita Ks.  
67202

**Socolofsky # 1-9**

Job Ticket: 62497

DST#: 4

ATTN: Steve Davis

Test Start: 2014.12.08 @ 10:51:00

**Mud and Cushion Information**

Mud Type: Gel Chem

Cushion Type:

Oil API:

deg API

Mud Weight: 9.00 lb/gal

Cushion Length:

ft

Water Salinity:

ppm

Viscosity: 56.00 sec/qt

Cushion Volume:

bbf

Water Loss: 8.79 in<sup>3</sup>

Gas Cushion Type:

Resistivity: 0.00 ohm.m

Gas Cushion Pressure:

psig

Salinity: 3600.00 ppm

Filter Cake: 1.00 inches

**Recovery Information**

Recovery Table

Length ft	Description	Volume bbf
940.00	S,O,S,W 100%W (FEW OIL SPECS)	10.890
315.00	S,O,C,M,W, 10%O 10%M 80%W	4.419
5.00	C/O 100%	0.070

Total Length: 1260.00 ft      Total Volume: 15.379 bbf

Num Fluid Samples: 0

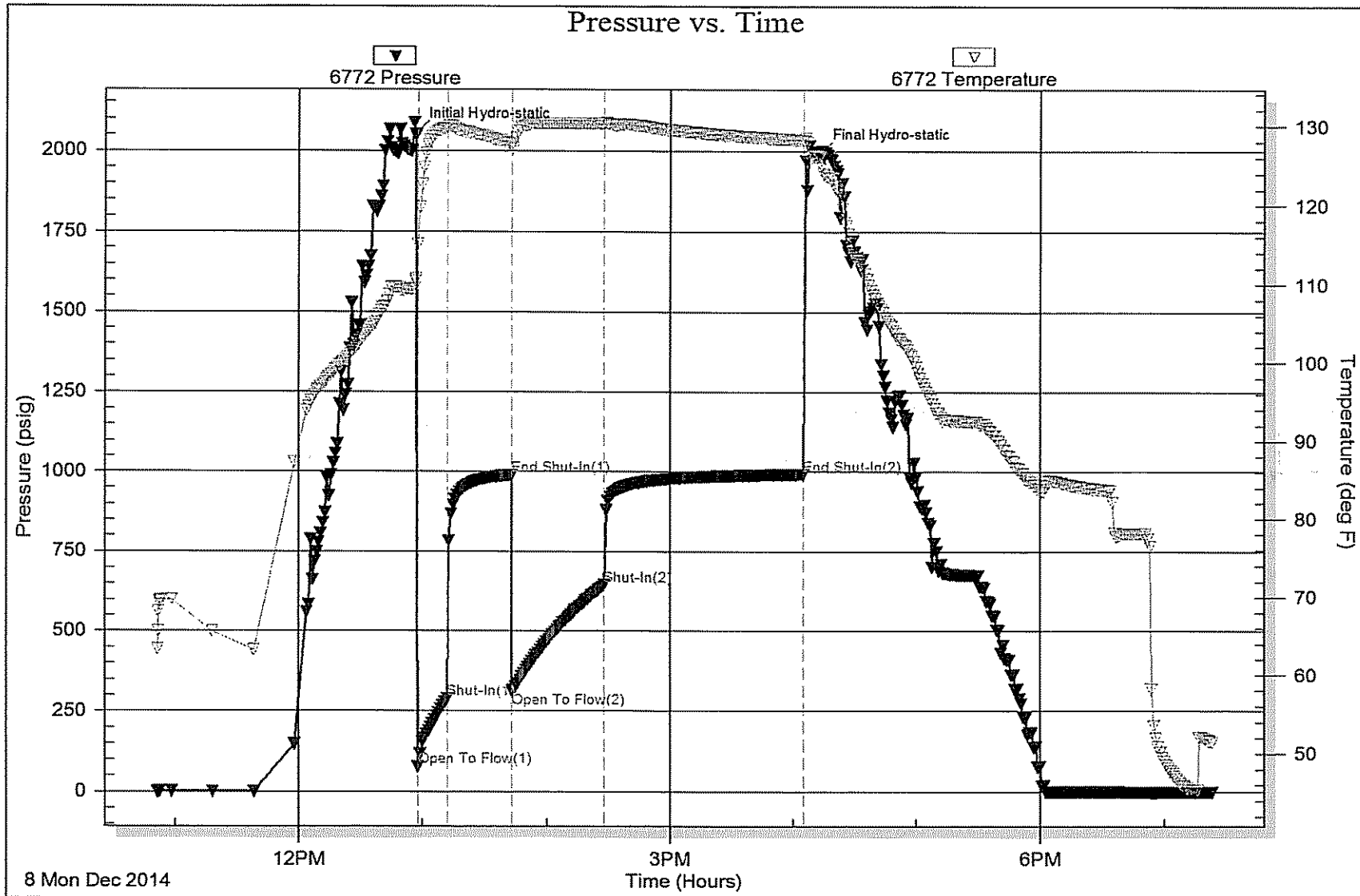
Num Gas Bombs: 0

Serial #:

Laboratory Name:

Laboratory Location:

Recovery Comments: CORRECTED OIL GRAVITY = 28 API @ 60 DEG.  
CHLORIDES = 27,000.00

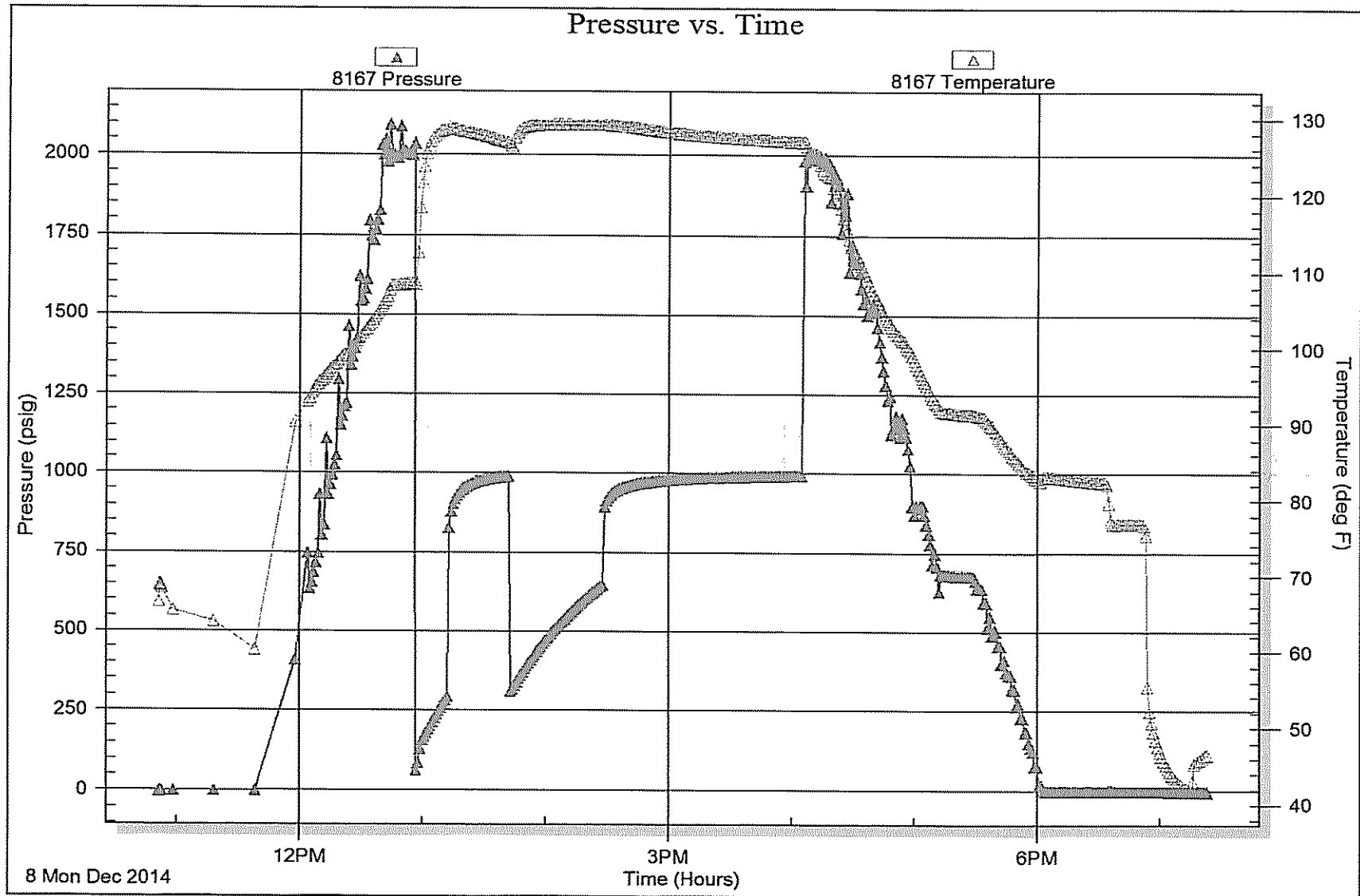


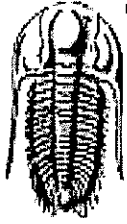
Serial #: 8167

Outside Lario Oil & Gas

Socolofsky # 1-9

DST Test Number: 4





**TRILOBITE TESTING, INC**

# DRILL STEM TEST REPORT

Lario Oil & Gas

Sec. 9 - 17 s. - 31 w. - Scott

301 S. Market St.  
Wichita Ks.  
67202

Socolofsky # 1-9

Job Ticket: 62498

DST#: 5

ATTN: Steve Davis

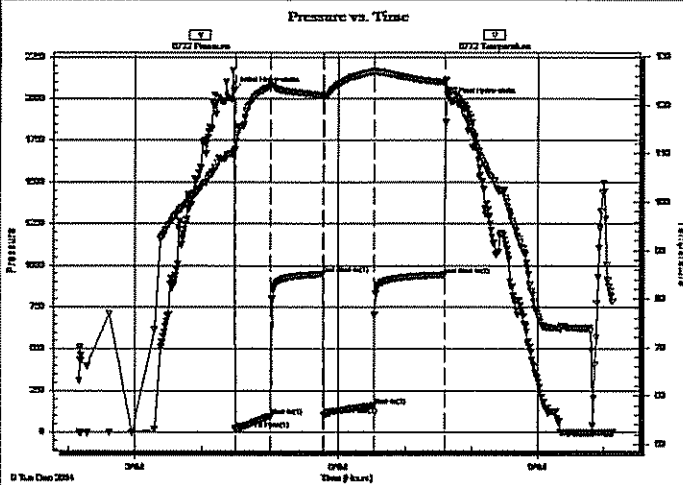
Test Start: 2014.12.09 @ 02:10:00

## GENERAL INFORMATION:

Formation: **LANS. " J "**  
 Deviated: No Whipstock: ft (KB)  
 Test Type: Conventional Bottom Hole (Reset)  
 Time Tool Opened: 04:28:45  
 Tester: Bob Hamel  
 Time Test Ended: 10:08:00  
 Unit No: 72  
 Interval: **4181.00 ft (KB) To 4200.00 ft (KB) (TVD)**  
 Reference Elevations: 2959.00 ft (KB)  
 Total Depth: **4200.00 ft (KB) (TVD)**  
 2951.00 ft (CF)  
 Hole Diameter: **7.88 inches**Hole Condition: Fair  
 KB to GR/CF: 8.00 ft

**Serial #: 6772** Inside  
 Press@RunDepth: 161.42 psig @ 4182.00 ft (KB) Capacity: 8000.00 psig  
 Start Date: 2014.12.09 End Date: 2014.12.09 Last Calib.: 2014.12.09  
 Start Time: 02:10:05 End Time: 10:07:59 Time On Btm: 2014.12.09 @ 04:27:45  
 Time Off Btm: 2014.12.09 @ 07:42:00

TEST COMMENT: I.F. - 30 - 1/2" INT. BLOW BUILT TO 8"  
 I.S.I. - 45 - NO B.B.  
 F.F. - 45 - W.S.B. STARTED @ 3 MIN BUILT TO 8"  
 F.S.I. - 60 - NO B.B.



## PRESSURE SUMMARY

Time (Min.)	Pressure (psig)	Temp (deg F)	Annotation
0	2050.74	110.35	Initial Hydro-static
1	18.35	110.86	Open To Flow (1)
33	97.90	124.02	Shut-In(1)
79	946.79	121.94	End Shut-In(1)
80	102.86	122.25	Open To Flow (2)
125	161.42	126.96	Shut-In(2)
188	943.71	124.74	End Shut-In(2)
195	1985.03	122.93	Final Hydro-static

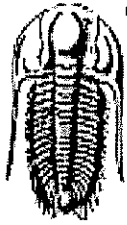
## Recovery

Length (ft)	Description	Volume (bbl)
252.00	M,W, 10%M 90%W	1.24

## Gas Rates

Choke (Inches)	Pressure (psig)	Gas Rate (Mcf/d)

\* Recovery from multiple tests



**TRILOBITE  
TESTING, INC**

**DRILL STEM TEST REPORT**

**FLUID SUMMARY**

Lario Oil & Gas

**Sec. 9 - 17 s. - 31 w. - Scott**

301 S. Market St.  
Wichita Ks.  
67202

**Socolofsky # 1-9**

Job Ticket: 62498

**DST#: 5**

ATTN: Steve Davis

Test Start: 2014.12.09 @ 02:10:00

**Mud and Cushion Information**

Mud Type: Gel Chem

Cushion Type:

Oil API:

deg API

Mud Weight: 9.00 lb/gal

Cushion Length:

ft

Water Salinity:

44000 ppm

Viscosity: 56.00 sec/qt

Cushion Volume:

bbbl

Water Loss: 8.79 in<sup>3</sup>

Gas Cushion Type:

Resistivity: 0.00 ohm.m

Gas Cushion Pressure:

psig

Salinity: 3600.00 ppm

Filter Cake: 1.00 inches

**Recovery Information**

Recovery Table

Length ft	Description	Volume bbl
252.00	M,W, 10%M 90%W	1.239

Total Length: 252.00 ft

Total Volume: 1.239 bbl

Num Fluid Samples: 0

Num Gas Bombs: 0

Serial #:

Laboratory Name:

Laboratory Location:

Recovery Comments: R.W. = 0.34 @ 35 DEG. CHLORIDES = 44,000.00 P.P.M.



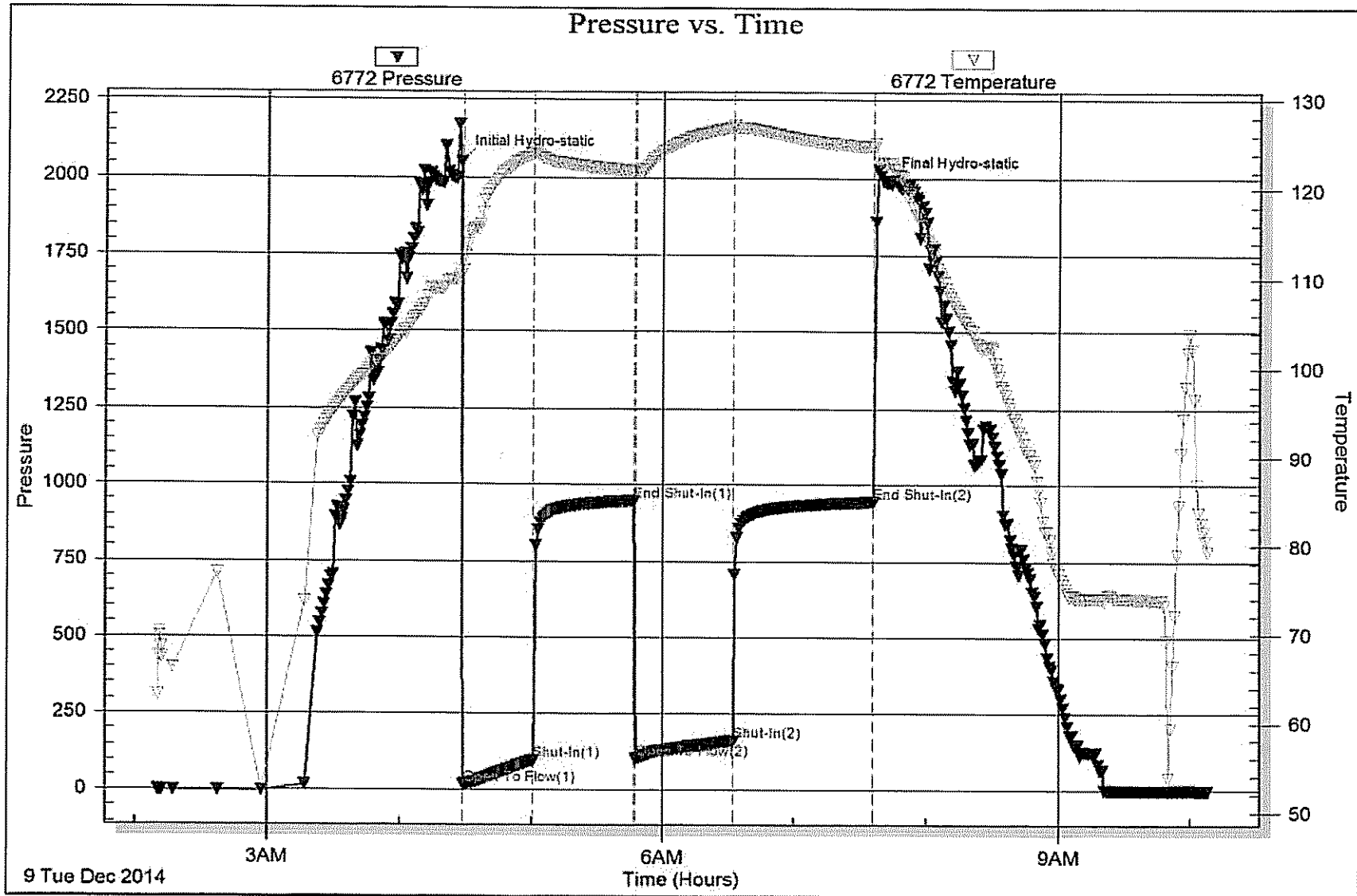
Serial #: 6772

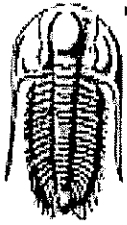
Inside

Lario Oil & Gas

Socolofsky # 1-9

DST Test Number: 5





**TRILOBITE  
TESTING, INC**

## DRILL STEM TEST REPORT

Lario Oil & Gas

Sec. 9 - 17 s. - 31 w. - Scott

301 S. Market St.  
Wichita Ks.  
67202

Socolofsky # 1-9

Job Ticket: 62499

DST#: 6

ATTN: Steve Davis

Test Start: 2014.12.10 @ 18:00:00

### GENERAL INFORMATION:

Formation: **Pawnee - Cherokee**

Deviated: No Whipstock: ft (KB)

Time Tool Opened: 20:57:45

Time Test Ended: 02:24:30

Test Type: Conventional Bottom Hole (Reset)

Tester: Bob Hamel

Unit No: 72

Interval: **4416.00 ft (KB) To 4500.00 ft (KB) (TVD)**

Reference Elevations: 2959.00 ft (KB)

Total Depth: 4500.00 ft (KB) (TVD)

2951.00 ft (CF)

Hole Diameter: 7.88 inches Hole Condition: Fair

KB to GR/CF: 8.00 ft

Serial #: **6772** Inside

Press@RunDepth: 69.83 psig @ 4482.00 ft (KB)

Capacity: 8000.00 psig

Start Date: 2014.12.10

End Date: 2014.12.11

Last Calib.: 2014.12.11

Start Time: 18:00:05

End Time: 02:24:29

Time On Btm: 2014.12.10 @ 20:56:30

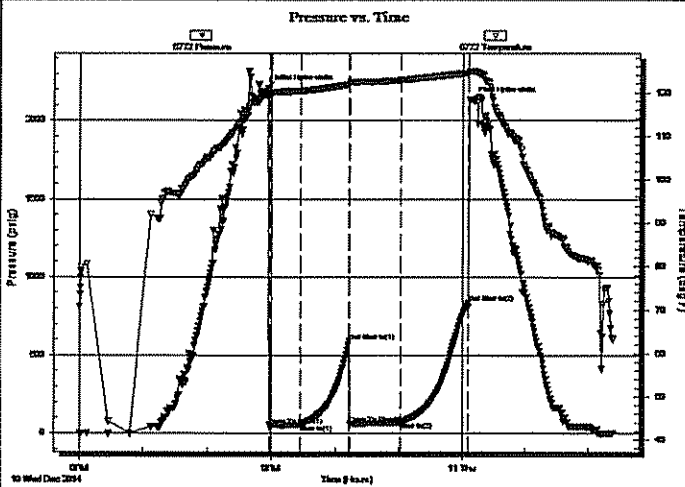
Time Off Btm: 2014.12.11 @ 00:08:45

TEST COMMENT: I.F. - 30 - 1/2" INT. BLOW BUILT TO 2"

I.S.I. - 45 - NO B.B.

F.F. - 45 - 1/2" INT BLOW BUILT TO 2"

F.S.I. - 60 - NO B.B.



### PRESSURE SUMMARY

Time (Min.)	Pressure (psig)	Temp (deg F)	Annotation
0	2204.62	119.42	Initial Hydro-static
2	51.23	119.29	Open To Flow (1)
31	53.99	120.36	Shut-in(1)
77	589.49	121.85	End Shut-in(1)
78	56.89	122.38	Open To Flow (2)
125	69.83	122.84	Shut-in(2)
189	836.71	124.53	End Shut-in(2)
193	2130.06	124.90	Final Hydro-static

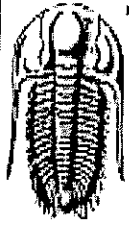
### Recovery

Length (ft)	Description	Volume (bbl)
15.00	O,C,M, 10%O 90%M	0.07

\* Recovery from multiple tests

### Gas Rates

Choke (inches)	Pressure (psig)	Gas Rate (Mcf/d)



**TRILOBITE  
TESTING, INC**

**DRILL STEM TEST REPORT**

**FLUID SUMMARY**

Lario Oil & Gas

**Sec. 9 - 17 s. - 31 w. - Scott**

301 S. Market St.  
Wichita Ks.  
67202

**Socolofsky # 1-9**

Job Ticket: 62499

DST#: 6

ATTN: Steve Davis

Test Start: 2014.12.10 @ 18:00:00

**Mud and Cushion Information**

Mud Type: Gel Chem

Cushion Type:

Oil API:

deg API

Mud Weight: 10.00 lb/gal

Cushion Length:

ft

Water Salinity:

ppm

Viscosity: 67.00 sec/qt

Cushion Volume:

bbf

Water Loss: 9.59 in<sup>3</sup>

Gas Cushion Type:

Resistivity: 0.00 ohm.m

Gas Cushion Pressure:

psig

Salinity: 5000.00 ppm

Filter Cake: 1.00 inches

**Recovery Information**

Recovery Table

Length ft	Description	Volume bbf
15.00	O,C,M, 10%O 90%M	0.074

Total Length: 15.00 ft

Total Volume: 0.074 bbf

Num Fluid Samples: 0

Num Gas Bombs: 0

Serial #:

Laboratory Name:

Laboratory Location:

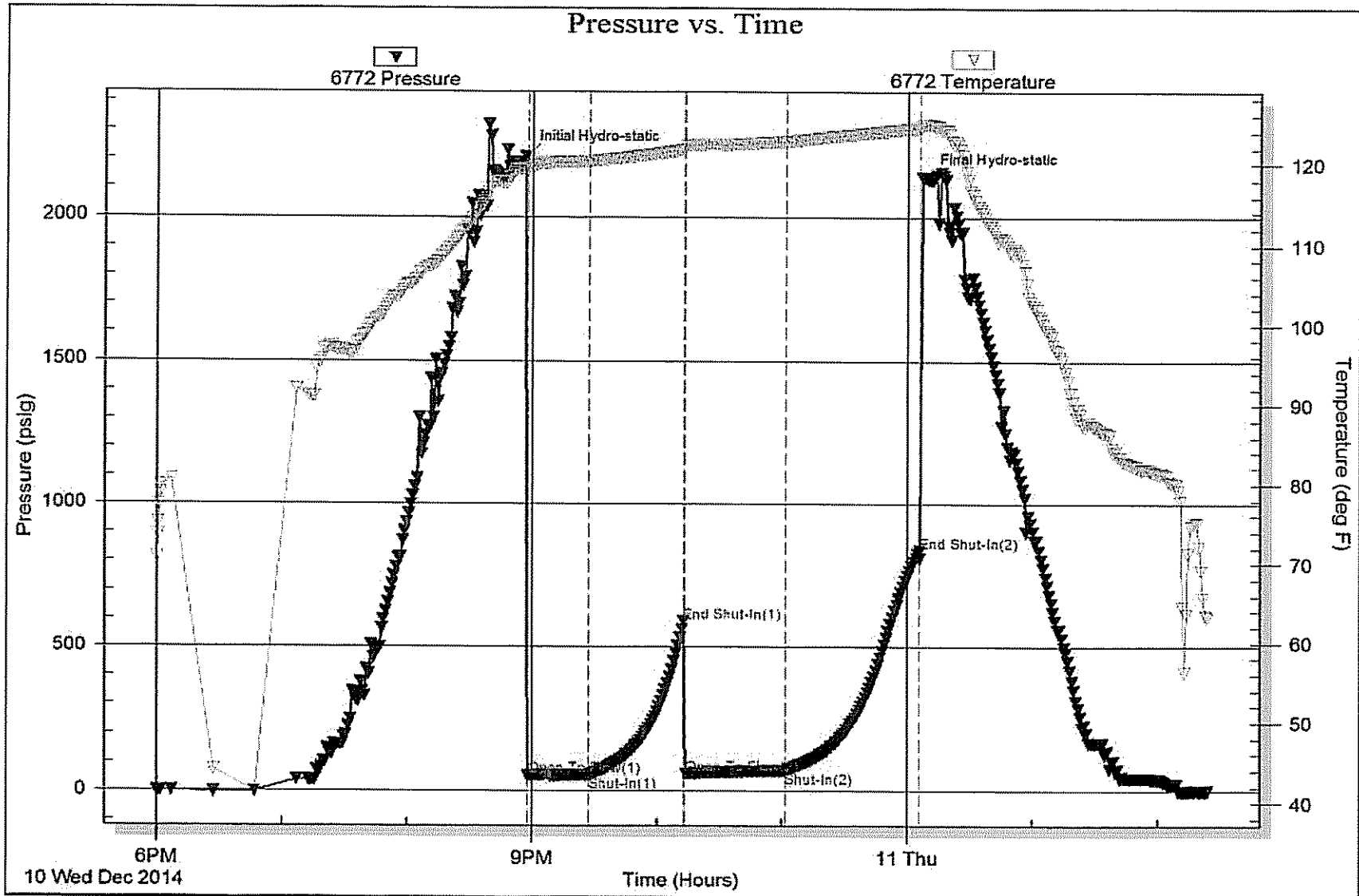
Recovery Comments:

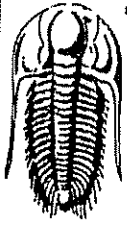
Serial #: 6772

Inside Lario Oil & Gas

Sokolofsky # 1-9

DST Test Number: 6





**TRILOBITE TESTING, INC.**

**DRILL STEM TEST REPORT**

Lario Oil & Gas

Sec. 9 - 17 s. - 31 w. - Scott

301 S. Market St.  
Wichita Ks.  
67202

Socolofsky # 1-9

Job Ticket: 62500

DST#: 7

ATTN: Steve Davis

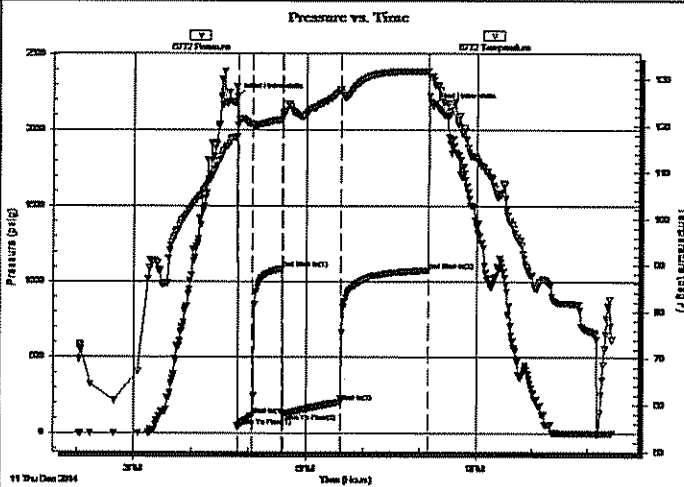
Test Start: 2014.12.11 @ 14:02:00

**GENERAL INFORMATION:**

Formation: **Johnson**  
 Deviated: No Whipstock: ft (KB)  
 Test Type: Conventional Bottom Hole (Reset)  
 Time Tool Opened: 16:48:30  
 Tester: Bob Hamel  
 Time Test Ended: 23:25:30  
 Unit No: 72  
 Interval: 4512.00 ft (KB) To 4560.00 ft (KB) (TVD)  
 Reference Elevations: 2959.00 ft (KB)  
 Total Depth: 4560.00 ft (KB) (TVD)  
 2951.00 ft (CF)  
 Hole Diameter: 7.88 inches  
 Hole Condition: Fair  
 KB to GR/CF: 8.00 ft

**Serial #: 6772** Inside  
 Press@RunDepth: 205.41 psig @ 4546.00 ft (KB) Capacity: 8000.00 psig  
 Start Date: 2014.12.11 End Date: 2014.12.11 Last Calib.: 2014.12.11  
 Start Time: 14:02:05 End Time: 23:25:30 Time On Btm: 2014.12.11 @ 16:47:30  
 Time Off Btm: 2014.12.11 @ 20:13:00

TEST COMMENT: I.F. - 15 - 1/2" INT. BLOW BUILT TO B.O.B. IN 6 1/2 MIN.  
 I.S.I.-30 - NO B.B.  
 F.F. - 60 - 1/2" INT. BLOW BUILT TO B.O.B. IN 8 1/2 MIN.  
 F.S.I. - 90 - W.S.B.B. STARTED @ 3 MIN. BUILT TO 1"



**PRESSURE SUMMARY**

Time (Min.)	Pressure (psig)	Temp (deg F)	Annotation
0	2222.04	117.70	Initial Hydro-static
1	46.94	120.13	Open To Flow (1)
17	117.37	120.27	Shut-In(1)
48	1086.74	121.38	End Shut-In(1)
48	129.73	121.90	Open To Flow (2)
109	205.41	127.74	Shut-In(2)
201	1074.82	131.71	End Shut-In(2)
206	2160.95	130.61	Final Hydro-static

**Recovery**

Length (ft)	Description	Volume (bbl)
20.00	S,M,C,G,C,O, 10%M 20%G 70%O	0.10
451.00	H,G,C,O, 20%G 80%O	4.21
0.00	567' G.I.P. 100%	0.00

**Gas Rates**

Choke (inches)	Pressure (psig)	Gas Rate (Mcf/d)

\* Recovery from multiple tests



**TRILOBITE  
TESTING, INC**

**DRILL STEM TEST REPORT**

**FLUID SUMMARY**

Lario Oil & Gas

**Sec. 9 - 17 s. - 31 w. - Scott**

301 S. Market St.  
Wichita Ks.  
67202

**Socolofsky # 1-9**

Job Ticket: 62500

DST#: 7

ATTN: Steve Davis

Test Start: 2014.12.11 @ 14:02:00

**Mud and Cushion Information**

Mud Type: Gel Chem

Cushion Type:

Oil API:

deg API

Mud Weight: 9.00 lb/gal

Cushion Length:

ft

Water Salinity:

ppm

Viscosity: 51.00 sec/qt

Cushion Volume:

bbf

Water Loss: 7.20 in<sup>2</sup>

Gas Cushion Type:

Resistivity: 0.00 ohm.m

Gas Cushion Pressure:

psig

Salinity: 4000.00 ppm

Filler Cake: 1.00 inches

**Recovery Information**

Recovery Table

Length ft	Description	Volume bbf
20.00	S,M,C,G,C,O, 10%M 20%G 70%O	0.098
451.00	H,G,C,O, 20%G 80%O	4.213
0.00	567' G.I.P. 100%	0.000

Total Length: 471.00 ft      Total Volume: 4.311 bbf

Num Fluid Samples: 0

Num Gas Bombs: 0

Serial #:

Laboratory Name:

Laboratory Location:

Recovery Comments: CORRECTED OIL GRAVITY = 25 API @ 60 DEG

