



CONSOLIDATED
Oil Well Services, LLC

REMIT TO
Consolidated Oil Well Services, LLC
Dept:970
P.O.Box 4346
Houston, TX 77210-4346

MAIN OFFICE

P.O.Box884
Chanute, KS 66720
620/431-9210, 1-800/467-8676
Fax 620/431-0012

Invoice

Invoice#

802319

Invoice Date: 11/30/14

Terms: Net 30

Page 1

LARIO OIL & GAS

P.O. BOX 1093
GARDEN CITY KS 637846
USA
3162655611

BERNING A #1-7

Drilling / Surface
12-8-14 JK

Part No	Description	Quantity	Unit Price	Discount(%)	Total
5401	Cement Pumper	1.000	1,150.0000	15.000	977.50
5406	Mileage Charge	40.000	5.2500	15.000	178.50
5407A	Ton Mileage Delivery Charge	1.000	740.6000	15.000	629.51
1104S	Class A Cement	225.000	18.5500	15.000	3,547.69
1102	Calcium Chloride (50#)	634.000	0.9400	15.000	506.57
1118B	Premium Gel / Bentonite	423.000	0.2700	15.000	97.08
4432	8 5/8 Wooden Plug	1.000	100.7500	15.000	85.64
1111	Sodium Chloride (Granulated Salt)	100.000	0.0000	0.000	0.00

Subtotal 7,085.27

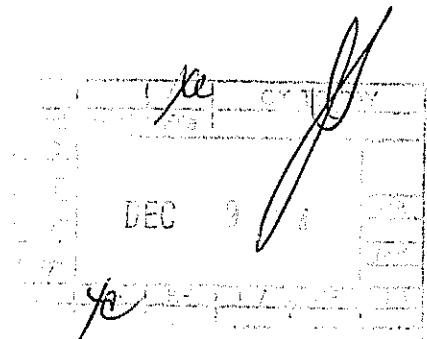
Discounted Amount 1,062.79

SubTotal After Discount 6,022.48

Amount Due 7,491.52 If paid after 12/30/14

Tax: 345.31

Total: 6,367.80





CONSOLIDATED
Oil Well Services, LLC

PO Box 884, Chanute, KS 66720
620-431-9210 or 800-467-8676

1174 802319
INVOICE # 1248
1260

TICKET NUMBER 47913
LOCATION Oakley KS
FOREMAN Dane Retzlaff

FIELD TICKET & TREATMENT REPORT
CEMENT

DATE	CUSTOMER #	WELL NAME & NUMBER	SECTION	TOWNSHIP	RANGE	COUNTY
11/30/14	4793	Berning A #1-7	7	19	35	Wichita
CUSTOMER			MARIANTHAL			
MAILING ADDRESS			TRUCK #	DRIVER	TRUCK #	DRIVER
CITY			539	Jeremy		
STATE			539	Lance		
ZIP CODE						

JOB TYPE Surface HOLE SIZE 12 1/4 HOLE DEPTH 364 CASING SIZE & WEIGHT 8 5/8 24 LBS
 CASING DEPTH 364 DRILL PIPE _____ TUBING _____ OTHER _____
 SLURRY WEIGHT 14.8 SLURRY VOL 1.36 WATER gal/sk 6.5 CEMENT LEFT in CASING 90
 DISPLACEMENT 21.9 DISPLACEMENT PSI _____ MIX PSI _____ RATE _____

REMARKS: Safety meeting. Rig up on Murfin 4#. Break circulation with rig pump.
Mix 225 sks Class A 3% cc 2% gel. Displace 22 BBLs of water. Shut in
Cement did circulate

Thanks Dane + crew

ACCOUNT CODE	QUANTITY or UNITS	DESCRIPTION of SERVICES or PRODUCT	UNIT PRICE	TOTAL
5401	1	PUMP CHARGE	1150.00	1150.00
5406	40	MILEAGE	5.25	210.00
5407	10.58	Ton Mileage Delivery	1.75	740.60
11045	225 sks	Class A cement	18.55	4173.75
1102	634#	Calcium Chloride	.94	595.96
1118B	423#	Bentonite	.27	114.21
4432	1	8 5/8 Wooden Plug	100.75	100.75
1111	100#	Salt	NC	NC
			Sale	7085.27
			less 15%	1062.79
			Total	6022.48
			SALES TAX	345.31
			ESTIMATED TOTAL	6367.80

Revin 3737
 AUTHORIZATION Kelly Wilson TITLE Pusher DATE 11-30-14

I acknowledge that the payment terms, unless specifically amended in writing on the front of the form or in the customer's account records, at our office, and conditions of service on the back of this form are in effect for services identified on this form.

TERMS

In consideration of the prices to be charged for Consolidated Oil Well Services, LLC (COWS) services, equipment and products and for the performance of services and supplying of materials, Customer agrees to the following terms and conditions.

Terms. Cash in advance unless satisfactory credit is established. On credit sales, invoices are payable within 30 days of the invoice date. On all invoices not paid within 30 days, Customer agrees to pay COWS interest at the rate of 18% per annum or the maximum rate allowed by law, whichever is higher. In the event COWS retains an attorney to pursue collection of any account, Customer agrees to pay all collection costs and attorney's fees incurred by COWS.

Any applicable federal, state or local sales, use occupation, consumer's or emergency taxes shall be added to the quoted price. All process license fees required to be paid to others will be added to the scheduled prices.

All COWS' prices are subject to change without notice.

SERVICE CONDITIONS

Customer warrants that the well is in proper condition to receive the services, equipment, products and materials to be supplied by COWS. The Customer shall at all time have complete care, custody, and control of the well, the drilling and production equipment at the well, and the premises about the well. A responsible representative of the Customer shall be present to specify depths, pressures, or materials used for any service which is to be performed.

(a) COWS shall not be responsible for any claim, cause of action or demand (hereinafter referred to as a 'claim') for damage to property, or injury to or death of employees and representatives, of Customer or the well owner (if different from Customer), unless such damage, injury or death is caused by the willful misconduct or gross negligence of COWS, including but not limited to sub-surface damage and surface damage arising from sub-surface damage.

(b) Unless a claim is the result of the sole willful misconduct or gross negligence of COWS, Customer shall be responsible for and indemnify and hold COWS harmless from any claim for: (1) reservoir loss or damage, or property damage resulting from sub-surface pressure, losing control of the well and/or a well blowout; (2) damages as a result of a subsurface trespass, or an action in the nature thereof, arising from a service operation performed by COWS; (3) injury to or death of persons, other than employees of COWS, or damage to property (including, but not limited to, injury to the well), or any damages whatsoever, irrespective of cause, growing out of or in any way connected with the use of radioactive material in the well hole; and (4) well damage or reservoir damage caused by (i) loss of circulation, cement invasion, cement misplacement, pumping cement or cement plugs on wells with loss of circulation, including the failure to displace plug to proper depth, (ii) sub-surface pressure and resulting failure to complete pumping of cement or cement plug, including dehydration of cement slurry or flashing, plugged float shoe, annulus bridging or plugging, or (iii) down hole tools being lost or left in the well, or becoming stuck in the well for any reason and by any cause. COWS may furnish down hole tools and may supply supervision for the running and placement of such tools but will not be liable for any damage, loss or result caused by the use of such tools.

Furthermore, Customer will be responsible for the cost to replace such tools if they are lost or left in the well.

(c) COWS makes no guarantee of the effectiveness of any COWS' products, supplies or materials, or the results of any COWS' treatment or services.

(d) Because of the uncertainty of variable well conditions and the necessity of relying on facts and supporting services furnished by others, COWS is unable to guarantee the accuracy of any chart interpretation, research analysis, job recommendation or other data furnished by COWS. COWS' personnel will use their best efforts in gathering such information and their best judgement in interpreting it, but Customer agrees that COWS shall not be responsible for any damage arising from the use of such information except where due to COWS' gross negligence or willful misconduct in the preparation or furnishing of it.

(e) COWS may buy and re-sell to Customer down hole equipment, including but not limited to float equipment, DV tools, port collars, type A & B packers, and Customer agrees that COWS is not an agent or dealer for the companies who manufacture such items, and further agrees that Customer shall be solely responsible for and indemnify COWS against any claim with regard to the effectiveness, malfunction of, or functionality of such items.

WARRANTIES - LIMITATION OF LIABILITY

COWS warrants title to the products, supplies and materials, and that the same are free from defects in workmanship and materials. THERE ARE NO OTHER WARRANTIES, EXPRESS OR IMPLIED, NOR ANY WARRANTY OF MERCHANTABILITY OR FITNESS FOR PURPOSE WHICH EXTEND BEYOND THOSE STATED IN THE IMMEDIATELY PRECEDING SENTENCE. COWS's liability and Customer's exclusive remedy in any claim (whether in contract, tort, breach of warranty or otherwise,) arising out of the sale or use of any COWS' products, supplies, materials or services is expressly limited to the replacement of such products, supplies, materials or services or their return to COWS or, at COWS' option, an allowance to Customer of credit for the cost of such items.

Customer waives and releases all claims against COWS for any special, incidental, indirect, consequential or punitive damages.



CONSOLIDATED
Oil Well Services, LLC

REMIT TO
Consolidated Oil Well Services, LLC
Dept:970
P.O.Box 4346
Houston, TX 77210-4346

MAIN OFFICE

P.O.Box 884
Chanute, KS 66720
620/431-9210, 1-800/467-8676
Fax 620/431-0012

Invoice

Invoice#

802695

Invoice Date: 12/18/14

Terms: C.O.D.

Page 1

LARIO OIL & GAS

P.O. BOX 1093
GARDEN CITY KS 637846
USA
3162655611

BERNING 1-7A

*Drilling site 14-238
12-22-14 LK*

Part No	Description	Quantity	Unit Price	Discount(%)	Total
5401C	Single Pump	1.000	3,175.0000	15.000	2,698.75
5406	Mileage Charge	40.000	5.2500	15.000	178.50
5407A	Ton Mileage Delivery Charge	1.000	2,449.3000	15.000	2,081.91
1126	Oil Well Cement	212.000	23.7000	15.000	4,270.74
1110A	Kol Seal (50# BAG)	1,060.000	0.5600	15.000	504.56
1131	60/40 Poz Mix	540.000	15.8600	15.000	7,279.74
1118B	Premium Gel / Bentonite	3,715.000	0.2700	15.000	852.59
1107	Flo-Seal	135.000	2.9700	15.000	340.81
4161	Float Shoe 4 1/2 AFU	1.000	359.2500	15.000	305.36
4453	4 1/2 Latch Down Plug	1.000	465.0000	15.000	395.25
4276A	DV Tool Weatherford 4 1/2	1.000	4,200.0000	15.000	3,570.00
4103	Cement Basket 4 1/2	1.000	275.0000	15.000	233.75
4129	Centralizer 4 1/2	16.000	48.5000	15.000	659.60
1144G-0130	Mud Flush - Oakley	500.000	1.0000	15.000	425.00

ACL

Stamp: (Acct / Exp / File /)
DEC 23 2014
Handwritten signature

Subtotal 27,995.95
Discounted Amount 4,199.39
SubTotal After Discount 23,796.56
Amount Due 29,802.12 If paid after 12/18/14

Tax: 1,535.25
Total: 25,331.81



CONSOLIDATED
Oil Well Services, LLC

PO Box 884, Chanute, KS 66720
620-431-9210 or 800-467-8676

1545
1494
Invoice # 802695
FIELD TICKET & TREATMENT REPORT
CEMENT

TICKET NUMBER 47839
LOCATION Daklay ks.
FOREMAN Cory Davis
Jerry

DATE	CUSTOMER #	WELL NAME & NUMBER	SECTION	TOWNSHIP	RANGE	COUNTY
12/11/14	4793	Berning 1-7 A	7	19	35 W	wichita
CUSTOMER Lario oil						
MAILING ADDRESS						
CITY		STATE	ZIP CODE			

TRUCK #	DRIVER	TRUCK #	DRIVER
731	Jeremy R.		
693	Jose		
528	Robert R.		
	Larry H.		

JOB TYPE Prod HOLE SIZE 7 7/8 HOLE DEPTH 5,100 CASING SIZE & WEIGHT 4 1/2 10.5
 CASING DEPTH 5,100 DRILL PIPE _____ TUBING _____ OTHER shoe at 10.31
 SLURRY WEIGHT 14.2/12.3 SLURRY VOL 1.42/1.9 WATER gals/sk 6.5/10.8 CEMENT LEFT in CASING 10 1/4
 DISPLACEMENT 82/39 1/4 DISPLACEMENT PSI 800/800 MIX PSI 200/200 RATE 6 BBL/min

REMARKS: Safety meeting, Rig up on Murfin Rig 4 Run casing and float Equipment
 Centralizers on joint 122, 119, 116, 113, 110, 107, 104, 101, 98, 95, 92, 89, 86, 83, 60, and 57
 Basket on top of 58 DV Tool bottom of 57 top of 58 shoe joint 10' finish running casing
 to bottom Pump Ball through at 650 psi circulate for 1:30. hook up to to pump truck
 pump 5 BBL water mix mud flush 5 BBL water behind mix 2 1/2 sk OWC. 5# Kalsol shutdown
 Release plug Dis place 40 BBL water 42 BBL mud Plug land at 1200 psi open DV Tool
 at 900 psi circulate 3 hours Plug MH/RH with 500 lbs of 60/40 mix 490 60/40 poz mix 8%
 Gel #1.25# flo seal shutdown Release plug Displace 39 1/4 BBL water Final lift 800 psi
 Plug landed at 1500 psi. Rig down

Thanks Cory D. and crew

ACCOUNT CODE	QUANTITY or UNITS	DESCRIPTION of SERVICES or PRODUCT	UNIT PRICE	TOTAL
5401 L	1	PUMP CHARGE	3,175.00	3,175.00
5406	40	MILEAGE	5.25	210.00
5407A	34.99	Ton Mileage Delivery	1.75	2,449.30
1126	212	O.W.C.	23.70	5,024.40
1110 A	1'060 #	Kal seal	.56	593.60
1131	540	60/40 Poz mix	15.86	8,564.40
1118 B	3,715	Bentonite (Gel)	.27	1,003.05
1107	135	flg seal	2.97	400.95
4161	1	AFU Float Shoe	359.25	359.25
4453	1	4 1/2 Latch Down + Plug	465.00	465.00
4276A	1	4 1/2 DV Tool	4,200.00	4,200.00
4103	1	4 1/2 Basket	275.00	275.00
4129	16	4 1/2 Centralizers	48.50	776.00
1144G	500 Gal	DV 100 Mud flush	1.00	500.00
			subtotal	27,995.95
			15% loss	4,199.39
			subtotal	23,796.56
			SALES TAX	1,535.25
			ESTIMATED TOTAL	25,331.81

(AFC 14-238)

AUTHORIZATION rule TITLE Foreman DATE _____

I acknowledge that the payment terms, unless specifically amended in writing on the front of the form or in the customer's account records, at our office, and conditions of service on the back of this form are in effect for services identified on this form.

TERMS

In consideration of the prices to be charged for Consolidated Oil Well Services, LLC (COWS) services, equipment and products and for the performance of services and supplying of materials, Customer agrees to the following terms and conditions.

Terms. Cash in advance unless satisfactory credit is established. On credit sales, invoices are payable within 30 days of the invoice date. On all invoices not paid within 30 days, Customer agrees to pay COWS interest at the rate of 18% per annum or the maximum rate allowed by law, whichever is higher. In the event COWS retains an attorney to pursue collection of any account, Customer agrees to pay all collection costs and attorney's fees incurred by COWS.

Any applicable federal, state or local sales, use occupation, consumer's or emergency taxes shall be added to the quoted price. All process license fees required to be paid to others will be added to the scheduled prices.

All COWS' prices are subject to change without notice.

SERVICE CONDITIONS

Customer warrants that the well is in proper condition to receive the services, equipment, products and materials to be supplied by COWS. The Customer shall at all time have complete care, custody, and control of the well, the drilling and production equipment at the well, and the premises about the well. A responsible representative of the Customer shall be present to specify depths, pressures, or materials used for any service which is to be performed.

(a) COWS shall not be responsible for any claim, cause of action or demand (hereinafter referred to as a 'claim') for damage to property, or injury to or death of employees and representatives, of Customer or the well owner (if different from Customer), unless such damage, injury or death is caused by the willful misconduct or gross negligence of COWS, including but not limited to sub-surface damage and surface damage arising from sub-surface damage.

(b) Unless a claim is the result of the sole willful misconduct or gross negligence of COWS, Customer shall be responsible for and indemnify and hold COWS harmless from any claim for: (1) reservoir loss or damage, or property damage resulting from sub-surface pressure, losing control of the well and/or a well blowout; (2) damages as a result of a subsurface trespass, or an action in the nature thereof, arising from a service operation performed by COWS; (3) injury to or death of persons, other than employees of COWS, or damage to property (including, but not limited to, injury to the well), or any damages whatsoever, irrespective of cause, growing out of or in any way connected with the use of radioactive material in the well hole; and (4) well damage or reservoir damage caused by (i) loss of circulation, cement invasion, cement misplacement, pumping cement or cement plugs on wells with loss of circulation, including the failure to displace plug to proper depth, (ii) sub-surface pressure and resulting failure to complete pumping of cement or cement plug, including dehydration of cement slurry or flashing, plugged float shoe, annulus bridging or plugging, or (iii) down hole tools being lost or left in the well, or becoming stuck in the well for any reason and by any cause. COWS may furnish down hole tools and may supply supervision for the running and placement of such tools but will not be liable for any damage, loss or result caused by the use of such tools.

Furthermore, Customer will be responsible for the cost to replace such tools if they are lost or left in the well.

(c) COWS makes no guarantee of the effectiveness of any COWS' products, supplies or materials, or the results of any COWS' treatment or services.

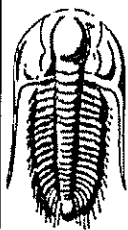
(d) Because of the uncertainty of variable well conditions and the necessity of relying on facts and supporting services furnished by others, COWS is unable to guarantee the accuracy of any chart interpretation, research analysis, job recommendation or other data furnished by COWS. COWS' personnel will use their best efforts in gathering such information and their best judgement in interpreting it, but Customer agrees that COWS shall not be responsible for any damage arising from the use of such information except where due to COWS' gross negligence or willful misconduct in the preparation or furnishing of it.

(e) COWS may buy and re-sell to Customer down hole equipment, including but not limited to float equipment, DV tools, port collars, type A & B packers, and Customer agrees that COWS is not an agent or dealer for the companies who manufacture such items, and further agrees that Customer shall be solely responsible for and indemnify COWS against any claim with regard to the effectiveness, malfunction of, or functionality of such items.

WARRANTIES - LIMITATION OF LIABILITY

COWS warrants title to the products, supplies and materials, and that the same are free from defects in workmanship and materials. THERE ARE NO OTHER WARRANTIES, EXPRESS OR IMPLIED, NOR ANY WARRANTY OF MERCHANTABILITY OR FITNESS FOR PURPOSE WHICH EXTEND BEYOND THOSE STATED IN THE IMMEDIATELY PRECEDING SENTENCE. COWS's liability and Customer's exclusive remedy in any claim (whether in contract, tort, breach of warranty or otherwise,) arising out of the sale or use of any COWS' products, supplies, materials or services is expressly limited to the replacement of such products, supplies, materials or services or their return to COWS or, at COWS' option, an allowance to Customer of credit for the cost of such items.

Customer waives and releases all claims against COWS for any special, incidental, indirect, consequential or punitive damages.



TRILOBITE TESTING, INC.

DRILL STEM TEST REPORT

Lario Oil & Gas Company

7-19s-35w-Wichita Co, KS

301 S. Market St.
Wichita, KS 67202

Berning A #1-7

Job Ticket: 56581

DST#: 1

ATTN: Mac Armstrong

Test Start: 2014.12.06 @ 04:46:00

GENERAL INFORMATION:

Formation: Lkc 'L'

Deviated: No Whipstock: ft (KB)

Time Tool Opened: 09:50:00

Time Test Ended: 15:08:00

Test Type: Conventional Bottom Hole (Initial)

Tester: Cornelio Landa III

Unit No: 44

Interval: 4404.00 ft (KB) To 4438.00 ft (KB) (TVD)

Reference Elevations: 3230.00 ft (KB)

Total Depth: 4438.00 ft (KB) (TVD)

3215.00 ft (CF)

Hole Diameter: 7.88 inches Hole Condition:

KB to GR/CF: 15.00 ft

Serial #: 8968

Outside

Press@RunDepth: 21.45 psig @ 4405.00 ft (KB)

Capacity: 8000.00 psig

Start Date: 2014.12.06

End Date:

2014.12.06

Last Calib.:

2014.12.06

Start Time: 04:46:05

End Time:

15:08:00

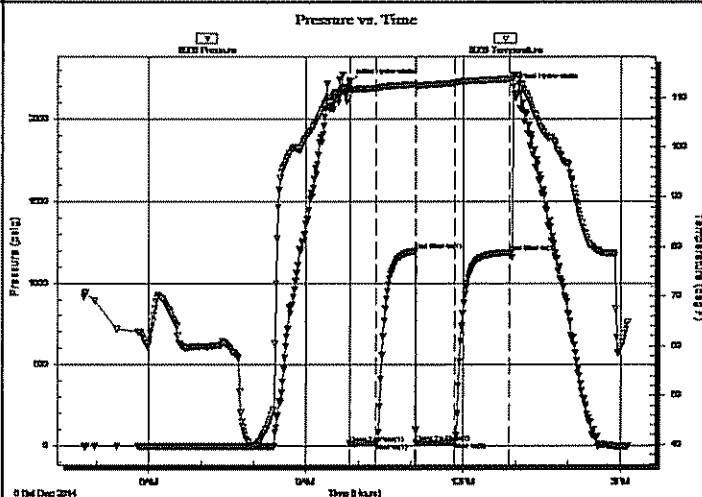
Time On Btm:

2014.12.06 @ 09:49:45

Time Off Btm:

2014.12.06 @ 12:57:00

TEST COMMENT: IF: Weak surface blow -Bullt to 1/2" blow
IS: No return
FF: No blow
FSI: No return



PRESSURE SUMMARY

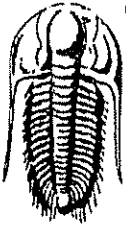
Time (Min.)	Pressure (psig)	Temp (deg F)	Annotation
0	2226.02	112.07	Initial Hydro-static
1	12.90	110.43	Open To Flow (1)
31	16.85	111.87	Shut-In(1)
76	1196.22	112.67	End Shut-In(1)
76	17.86	112.14	Open To Flow (2)
121	21.45	112.93	Shut-In(2)
183	1188.38	113.77	End Shut-In(2)
188	2197.89	114.42	Final Hydro-static

Recovery

Length (ft)	Description	Volume (bbl)
10.00	Mud 100m	0.05

Gas Rates

	Choke (inches)	Pressure (psig)	Gas Rate (Mcf/d)



TRILOBITE TESTING, INC.

DRILL STEM TEST REPORT

Lario Oil & Gas Company
301 S. Market St.
Wichita, KS 67202
ATTN: Mac Armstrong

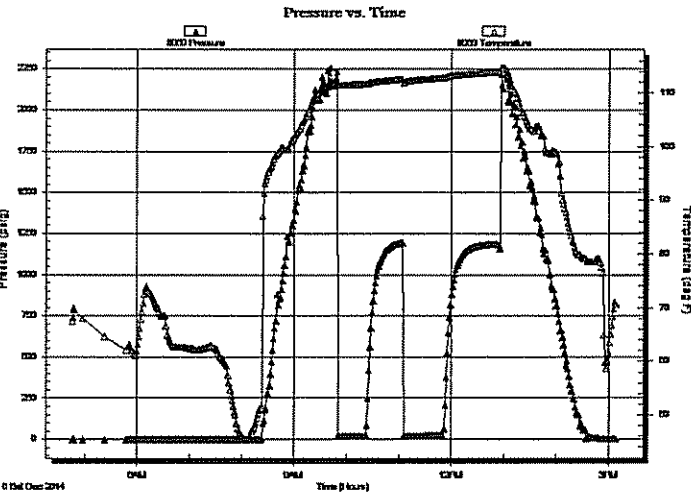
7-19s-35w-Wichita Co, KS
Berning A #1-7
Job Ticket: 56581 DST#: 1
Test Start: 2014.12.06 @ 04:46:00

GENERAL INFORMATION:

Formation: Lkc 'L'	Test Type: Conventional Bottom Hole (Initial)
Deviated: No Whipstock: ft (KB)	Tester: Cornelio Landa III
Time Tool Opened: 09:50:00	Unit No: 44
Time Test Ended: 15:08:00	
Interval: 4404.00 ft (KB) To 4438.00 ft (KB) (TVD)	Reference Elevations: 3230.00 ft (KB)
Total Depth: 4438.00 ft (KB) (TVD)	3215.00 ft (CF)
Hole Diameter: 7.88 inches	Hole Condition: KB to GR/CF: 15.00 ft

Serial #: 8969	Inside				
Press@RunDepth:	psig @	4405.00 ft (KB)	Capacity:	8000.00 psig	
Start Date:	2014.12.06	End Date:	2014.12.06	Last Calib.:	2014.12.06
Start Time:	04:46:05	End Time:	15:08:00	Time On Btm:	
				Time Off Btm:	

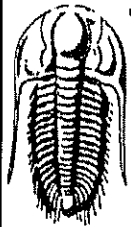
TEST COMMENT: IF: Weak surface blow -Built to 1/2" blow
IS: No return
FF: No blow
FS: No return



PRESSURE SUMMARY			
Time (Min.)	Pressure (psig)	Temp (deg F)	Annotation

Recovery		
Length (ft)	Description	Volume (bbl)
10.00	Mud 100m	0.05

Gas Rates			
	Choke (inches)	Pressure (psig)	Gas Rate (Mcf/d)



**TRILOBITE
TESTING, INC.**

DRILL STEM TEST REPORT

FLUID SUMMARY

Lario Oil & Gas Company

7-19s-35w-Wichita Co, KS

301 S. Market St.
Wichita, KS 67202

Berning A #1-7

Job Ticket: 56581

DST#: 1

ATTN: Mac Armstrong

Test Start: 2014.12.06 @ 04:46:00

Mud and Cushion Information

Mud Type: Gel Chem

Cushion Type:

Oil API:

deg API

Mud Weight: 9.00 lb/gal

Cushion Length:

ft

Water Salinity:

ppm

Viscosity: 55.00 sec/qt

Cushion Volume:

bbf

Water Loss: 7.20 in³

Gas Cushion Type:

Resistivity: 0.00 ohm.m

Gas Cushion Pressure:

psig

Salinity: 6300.00 ppm

Filter Cake: 1.00 inches

Recovery Information

Recovery Table

Length ft	Description	Volume bbf
10.00	Mud 100m	0.049

Total Length: 10.00 ft

Total Volume: 0.049 bbf

Num Fluid Samples: 0

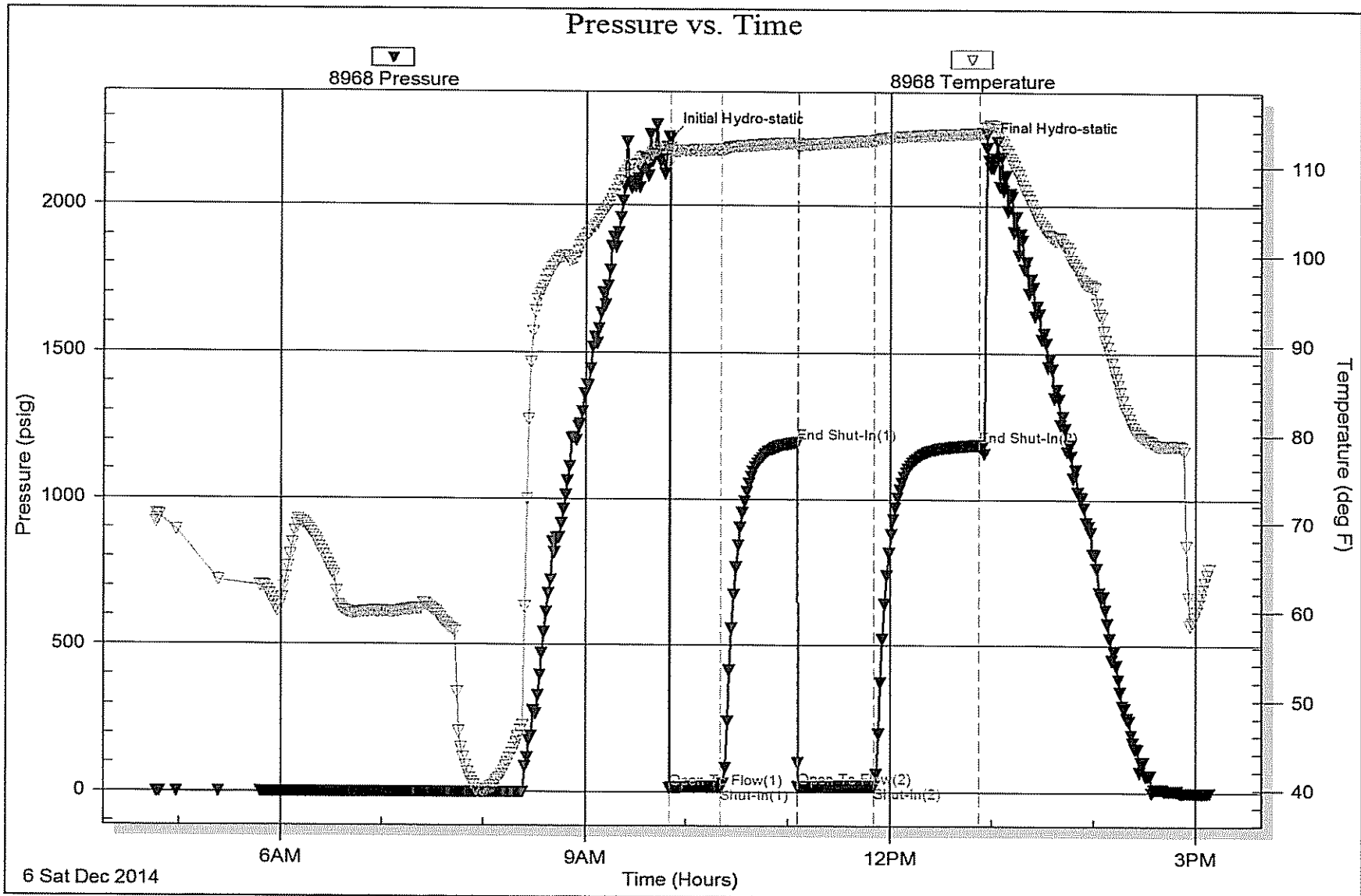
Num Gas Bombs: 0

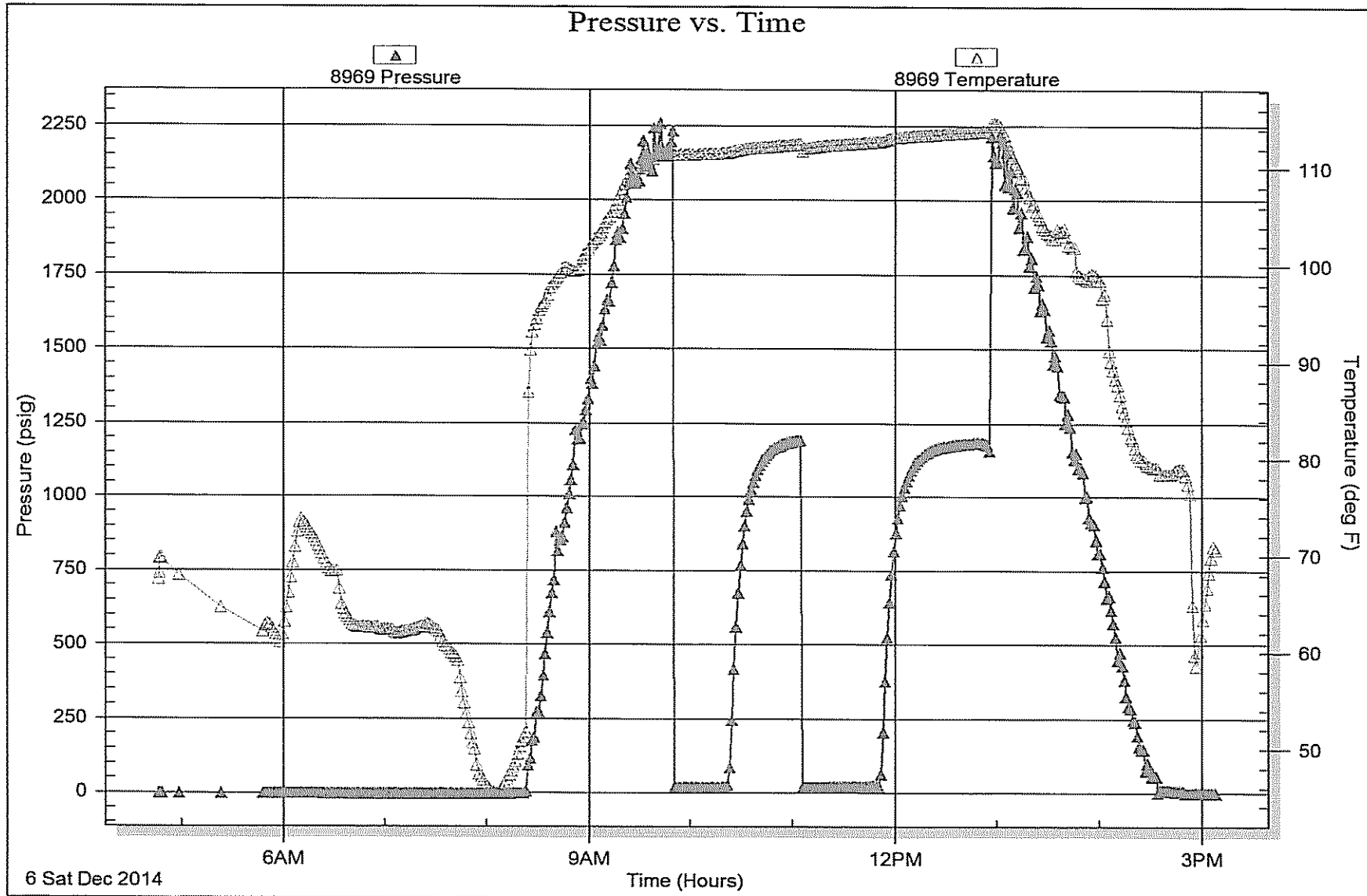
Serial #:

Laboratory Name:

Laboratory Location:

Recovery Comments:







**TRILOBITE
TESTING, INC.**

DRILL STEM TEST REPORT

Lario Oil & Gas Company
301 S. Market St.
Wichita, KS 67202
ATTN: Mac Armstrong

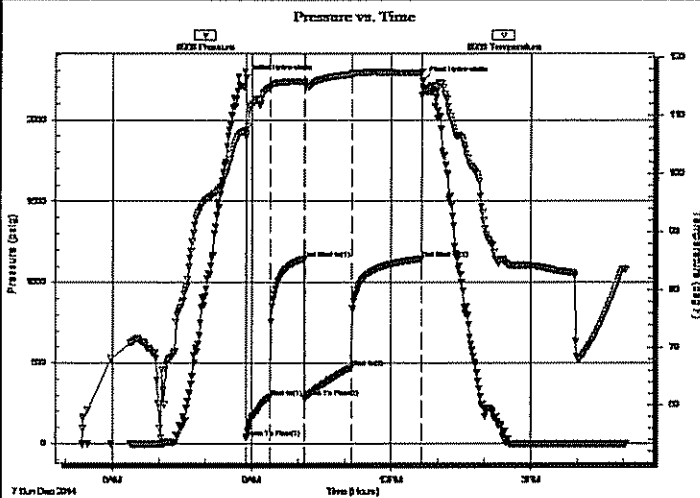
7-19s-35w-Wichita Co, KS
Berning A #1-7
Job Ticket: 56582 DST#: 2
Test Start: 2014.12.07 @ 05:21:00

GENERAL INFORMATION:

Formation: **Marmaton**
Deviated: No Whipstock: ft (KB)
Time Tool Opened: 08:53:00
Time Test Ended: 17:03:00
Interval: **4491.00 ft (KB) To 4575.00 ft (KB) (TVD)**
Total Depth: **4575.00 ft (KB) (TVD)**
Hole Diameter: **7.88 inches** Hole Condition:
Test Type: **Conventional Bottom Hole (Reset)**
Tester: **Cornelio Landa III**
Unit No: **44**
Reference Elevations: **3230.00 ft (KB)**
3215.00 ft (CF)
KB to GR/CF: **15.00 ft**

Serial #: 8968 **Outside**
Press@RunDepth: **472.07 psig @ 4493.00 ft (KB)** Capacity: **8000.00 psig**
Start Date: **2014.12.07** End Date: **2014.12.07** Last Calib.: **2014.12.07**
Start Time: **05:21:05** End Time: **17:03:00** Time On Btm: **2014.12.07 @ 08:52:45**
Time Off Btm: **2014.12.07 @ 12:40:15**

TEST COMMENT: IF: B.o.b. in 6 min.
ISI: Bled off in 3 min.- No return
FF: B.o.b. in 8 min.
FSI: Bled off in 3 min.- Weak surface blow back-Built to B.o.b. in 30 min.



PRESSURE SUMMARY

Time (Min.)	Pressure (psig)	Temp (deg F)	Annotation
0	2256.49	107.42	Initial Hydro-static
1	36.35	106.32	Open To Flow (1)
31	289.25	114.70	Shut-In(1)
75	1146.40	115.73	End Shut-in(1)
75	283.99	115.15	Open To Flow (2)
136	472.07	117.02	Shut-In(2)
227	1145.26	117.24	End Shut-In(2)
228	2240.00	115.76	Final Hydro-static

Recovery

Length (ft)	Description	Volume (bbl)
275.00	G & Mcw 10g 10m 80w	1.35
470.00	G & Ocm 25g 25o 50m	6.59
381.00	G & Ocm 30g 35o 35m	5.34
0.00	GIP 371	0.00
0.00	RW .172 @ 75=40000	0.00

* Recovery from multiple tests

Gas Rates

	Choke (Inches)	Pressure (psig)	Gas Rate (Mcf/d)



TRILOBITE TESTING, INC.

DRILL STEM TEST REPORT

Lario Oil & Gas Company

7-19s-35w-Wichita Co, KS

301 S. Market St.
Wichita, KS 67202

Berning A #1-7

Job Ticket: 56582

DST#: 2

ATTN: Mac Armstrong

Test Start: 2014.12.07 @ 05:21:00

GENERAL INFORMATION:

Formation: **Marmaton**

Deviated: No Whipstock: ft (KB)

Time Tool Opened: 08:53:00

Time Test Ended: 17:03:00

Test Type: Conventional Bottom Hole (Reset)

Tester: Cornelio Landa III

Unit No: 44

Interval: 4491.00 ft (KB) To 4575.00 ft (KB) (TVD)

Reference Elevations: 3230.00 ft (KB)

Total Depth: 4575.00 ft (KB) (TVD)

3215.00 ft (CF)

Hole Diameter: 7.88 inches Hole Condition:

KB to GR/CF: 15.00 ft

Serial #: 8969 Inside

Press@RunDepth: psig @ 4493.00 ft (KB)

Capacity: 8000.00 psig

Start Date: 2014.12.07

End Date: 2014.12.07

Last Calib.: 2014.12.07

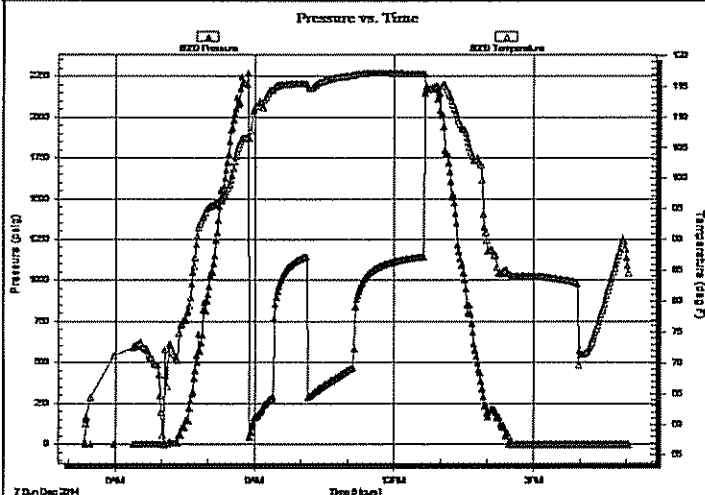
Start Time: 05:21:05

End Time: 17:03:00

Time On Btm:

Time Off Btm:

TEST COMMENT: IF: B.o.b. in 6 min.
IS: Bled off in 3 min.- No return
FF: B.o.b. in 8 min.
FS: Bled off in 3 min.- Weak surface blow back-Built to B.o.b. in 30 min.



PRESSURE SUMMARY

Time (Min.)	Pressure (psig)	Temp (deg F)	Annotation

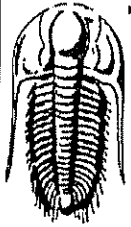
Recovery

Length (ft)	Description	Volume (bbl)
275.00	G & Mcw 10g 10m 80w	1.35
470.00	G & Ocm 25g 25o 50m	6.59
381.00	G & Ocm 30g 35o 35m	5.34
0.00	GIP 371	0.00
0.00	RW .172 @ 75=40000	0.00

Gas Rates

Choke (Inches)	Pressure (psig)	Gas Rate (Mcf/d)

* Recovery from multiple tests



**TRILOBITE
TESTING, INC.**

DRILL STEM TEST REPORT

FLUID SUMMARY

Lario Oil & Gas Company

7-19s-35w-Wichita Co, KS

301 S. Market St.
Wichita, KS 67202

Berning A #1-7

Job Ticket: 56582

DST#: 2

ATTN: Mac Armstrong

Test Start: 2014.12.07 @ 05:21:00

Mud and Cushion Information

Mud Type: Gel Chem

Cushion Type:

Oil API:

33 deg API

Mud Weight: 10.00 lb/gal

Cushion Length:

ft

Water Salinity:

40000 ppm

Viscosity: 48.00 sec/qt

Cushion Volume:

bbf

Water Loss: 7.20 in³

Gas Cushion Type:

Resistivity: 0.00 ohm.m

Gas Cushion Pressure:

psig

Salinity: 6500.00 ppm

Filter Cake: 1.00 inches

Recovery Information

Recovery Table

Length ft	Description	Volume bbf
275.00	G & Mcw 10g 10m 80w	1.352
470.00	G & Ocm 25g 25o 50m	6.593
381.00	G & Ocm 30g 35o 35m	5.344
0.00	GIP 371	0.000
0.00	RW .172 @ 75=40000	0.000

Total Length: 1126.00 ft

Total Volume: 13.289 bbf

Num Fluid Samples: 0

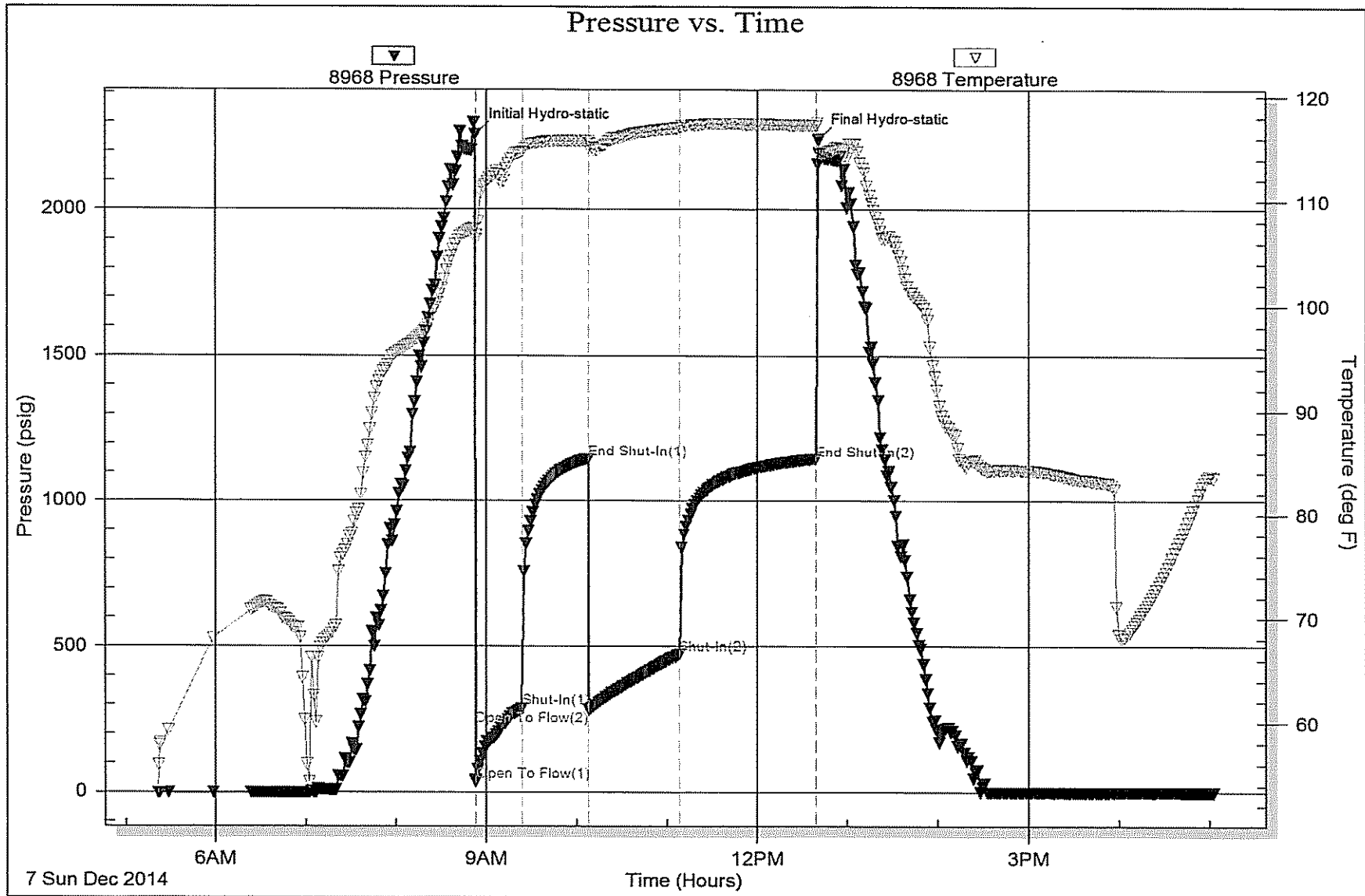
Num Gas Bombs: 0

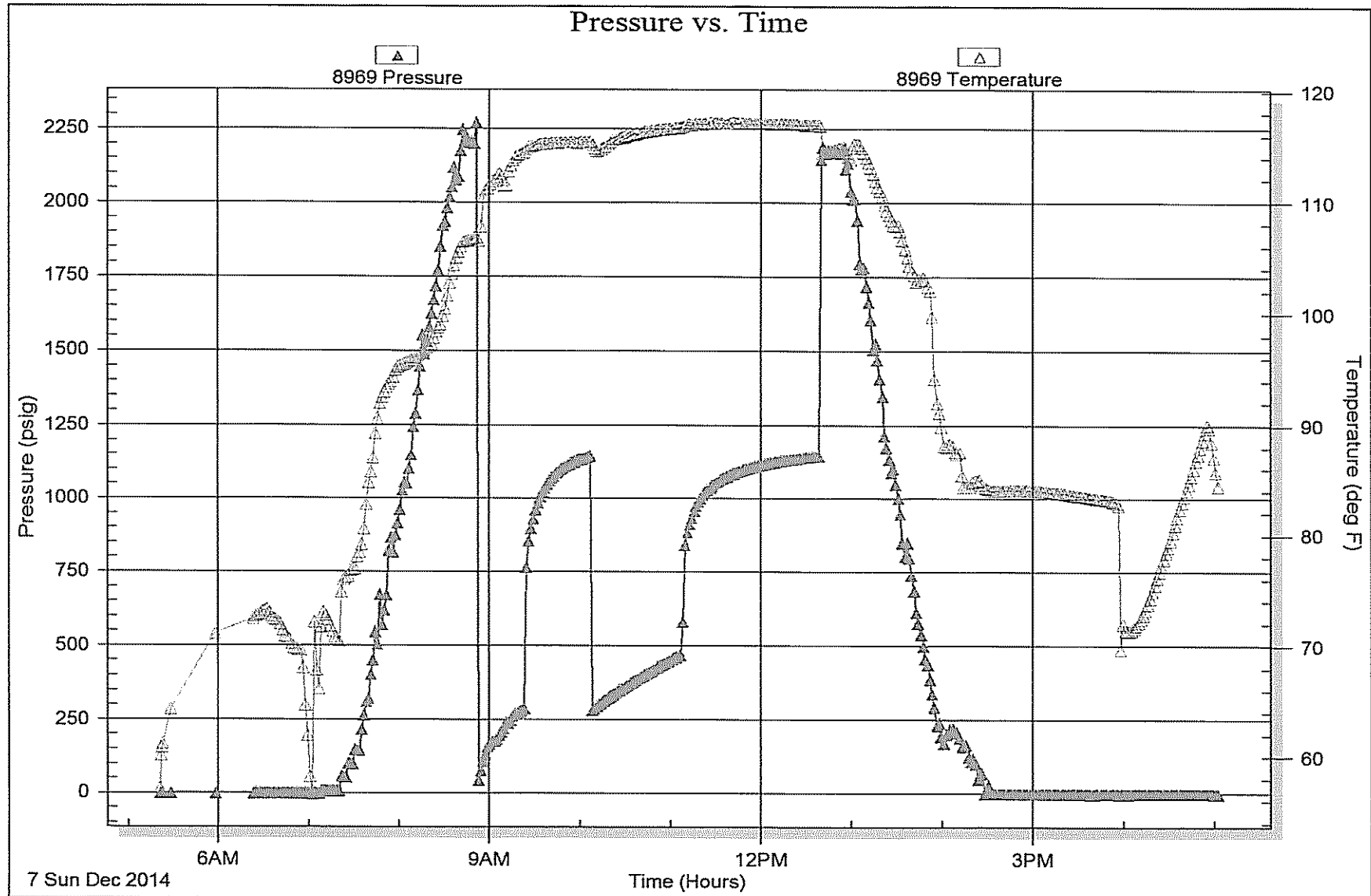
Serial #:

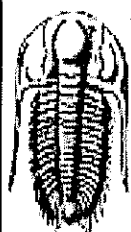
Laboratory Name:

Laboratory Location:

Recovery Comments:







**TRILOBITE
TESTING, INC**

DRILL STEM TEST REPORT

Lario Oil & Gas Company

7-19s-35w-Wichita Co, KS

301 S. Market St.
Wichita, KS 67202

Berning A #1-7

Job Ticket: 56583

DST#: 3

ATTN: Mac Armstrong

Test Start: 2014.12.08 @ 07:32:00

GENERAL INFORMATION:

Formation: **Cherokee Lime**

Deviated: No Whipstock: ft (KB)

Time Tool Opened: 10:37:45

Time Test Ended: 16:22:00

Test Type: Conventional Bottom Hole (Reset)

Tester: Cornelio Landa III

Unit No: 44

Interval: 4656.00 ft (KB) To 4684.00 ft (KB) (TVD)

Reference Elevations: 3230.00 ft (KB)

Total Depth: 4684.00 ft (KB) (TVD)

3215.00 ft (CF)

Hole Diameter: 7.88 inches Hole Condition:

KB to GR/CF: 15.00 ft

Serial #: 8968

Outside

Press@RunDepth: 60.64 psig @ 4657.00 ft (KB)

Capacity: 8000.00 psig

Start Date: 2014.12.08

End Date:

2014.12.08

Last Calib.:

2014.12.08

Start Time: 07:32:05

End Time:

16:22:00

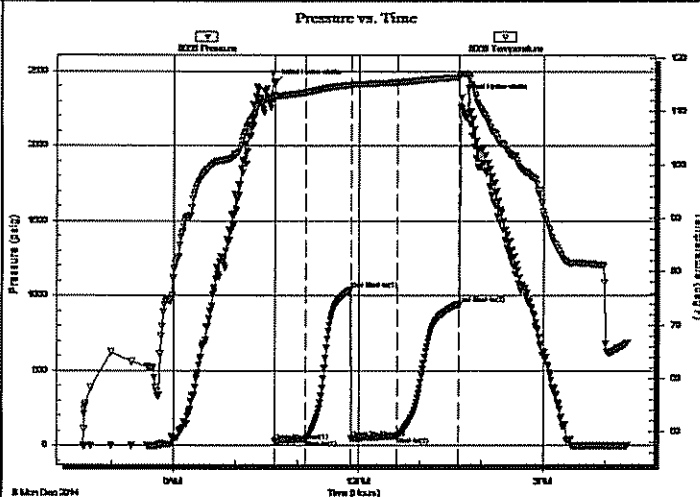
Time On Btm:

2014.12.08 @ 10:37:30

Time Off Btm:

2014.12.08 @ 13:40:15

TEST COMMENT: IF: Surface blow - Built to 6 in. blow
IS: Bled off in 2 min. - No return
FF: Surface blow - Built to B.o.b. in 44 min.
FS: Bled off in 2 min. - No return



PRESSURE SUMMARY

Time (Min.)	Pressure (psig)	Temp (deg F)	Annotation
0	2418.12	113.25	Initial Hydro-static
1	26.57	112.31	Open To Flow (1)
31	39.95	113.56	Shut-In(1)
75	1039.83	114.95	End Shut-In(1)
76	44.02	114.57	Open To Flow (2)
121	60.64	115.45	Shut-In(2)
181	943.25	116.46	End Shut-In(2)
183	2322.31	117.11	Final Hydro-static

Recovery

Length (ft)	Description	Volume (bbl)
92.00	Ocm 45o 55m	0.45
92.00	Mcg & O 10m 35g 55o	0.45
1.00	Co	0.00
0.00	GIP=94	0.00

* Recovery from multiple tests

Gas Rates

	Choke (Inches)	Pressure (psig)	Gas Rate (Mcf/d)



**TRILOBITE
TESTING, INC**

DRILL STEM TEST REPORT

FLUID SUMMARY

Lario Oil & Gas Company

7-19s-35w-Wichita Co, KS

301 S. Market St.
Wichita, KS 67202

Berning A #1-7

Job Ticket: 56583

DST#: 3

ATTN: Mac Armstrong

Test Start: 2014.12.08 @ 07:32:00

Mud and Cushion Information

Mud Type: Gel Chem

Cushion Type:

Oil API:

deg API

Mud Weight: 9.00 lb/gal

Cushion Length:

ft

Water Salinity:

ppm

Viscosity: 50.00 sec/qt

Cushion Volume:

bbf

Water Loss: 8.79 in*

Gas Cushion Type:

Resistivity: 0.00 ohm.m

Gas Cushion Pressure:

psig

Salinity: 8200.00 ppm

Filter Cake: 2.00 inches

Recovery Information

Recovery Table

Length ft	Description	Volume bbf
92.00	Ocm 45o 55m	0.452
92.00	Mcg & O 10m 35g 55o	0.452
1.00	Co	0.005
0.00	GIp=94	0.000

Total Length: 185.00 ft Total Volume: 0.909 bbf

Num Fluid Samples: 0

Num Gas Bombs: 0

Serial #:

Laboratory Name:

Laboratory Location:

Recovery Comments:

Serial #: 8968

Outside: Lario Oil & Gas Company

Berning A #1-7

DST Test Number: 3

