



TEMPORARY ABANDONMENT WELL APPLICATION

OPERATOR: License# _____
 Name: _____
 Address 1: _____
 Address 2: _____
 City: _____ State: _____ Zip: _____ + _____
 Contact Person: _____
 Phone: (_____) _____
 Contact Person Email: _____
 Field Contact Person: _____
 Field Contact Person Phone: (_____) _____

API No. 15- _____
 Spot Description: _____
 _____ - _____ - _____ - _____ Sec. _____ Twp. _____ S. R. _____ E W
 _____ feet from N / S Line of Section
 _____ feet from E / W Line of Section
 GPS Location: Lat: _____, Long: _____
(e.g. xx.xxxxx) (e.g. -xxx.xxxxx)
 Datum: NAD27 NAD83 WGS84
 County: _____ Elevation: _____ GL KB
 Lease Name: _____ Well #: _____
 Well Type: (check one) Oil Gas OG WSW Other: _____
 SWD Permit #: _____ ENHR Permit #: _____
 Gas Storage Permit #: _____
 Spud Date: _____ Date Shut-In: _____

	Conductor	Surface	Production	Intermediate	Liner	Tubing
Size						
Setting Depth						
Amount of Cement						
Top of Cement						
Bottom of Cement						

Casing Fluid Level from Surface: _____ How Determined? _____ Date: _____
 Casing Squeeze(s): _____ to _____ w / _____ sacks of cement, _____ to _____ w / _____ sacks of cement. Date: _____
(top) (bottom) (top) (bottom)
 Do you have a valid Oil & Gas Lease? Yes No
 Depth and Type: Junk in Hole at _____ Tools in Hole at _____ Casing Leaks: Yes No Depth of casing leak(s): _____
(depth) (depth)
 Type Completion: ALT. I ALT. II Depth of: DV Tool: _____ w / _____ sacks of cement Port Collar: _____ w / _____ sack of cement
(depth) (depth)
 Packer Type: _____ Size: _____ Inch Set at: _____ Feet
 Total Depth: _____ Plug Back Depth: _____ Plug Back Method: _____

Geological Data:

Formation Name	Formation Top	Formation Base	Completion Information
1. _____	At: _____	to _____ Feet	Perforation Interval _____ to _____ Feet or Open Hole Interval _____ to _____ Feet
2. _____	At: _____	to _____ Feet	Perforation Interval _____ to _____ Feet or Open Hole Interval _____ to _____ Feet

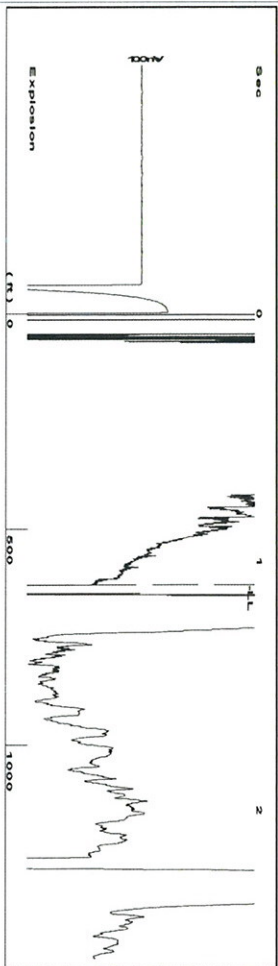
UNDER PENALTY OF PERJURY I HEREBY ATTEST THAT THE INFORMATION CONTAINED HEREIN IS TRUE AND CORRECT TO THE BEST OF MY KNOWLEDGE

Submitted Electronically

Do NOT Write in This Space - KCC USE ONLY	Date Tested: _____	Results: _____	Date Plugged: _____	Date Repaired: _____	Date Put Back in Service: _____
	Review Completed by: _____ Comments: _____				
TA Approved: <input type="checkbox"/> Yes <input type="checkbox"/> Denied Date: _____					

Mail to the Appropriate KCC Conservation Office:

	KCC District Office #1 - 210 E. Frontview, Suite A, Dodge City, KS 67801	Phone 620.225.8888
	KCC District Office #2 / UPGS - 3450 N. Rock Road, Building 600, Suite 601, Wichita, KS 67226	Phone 316.630.4000
	KCC District Office #3 - 1500 SW Seventh Steet, Chanute, KS 66720	Phone 620.432.2300
	KCC District Office #4 - 2301 E. 13th Street, Hays, KS 67601-2651	Phone 785.625.0550

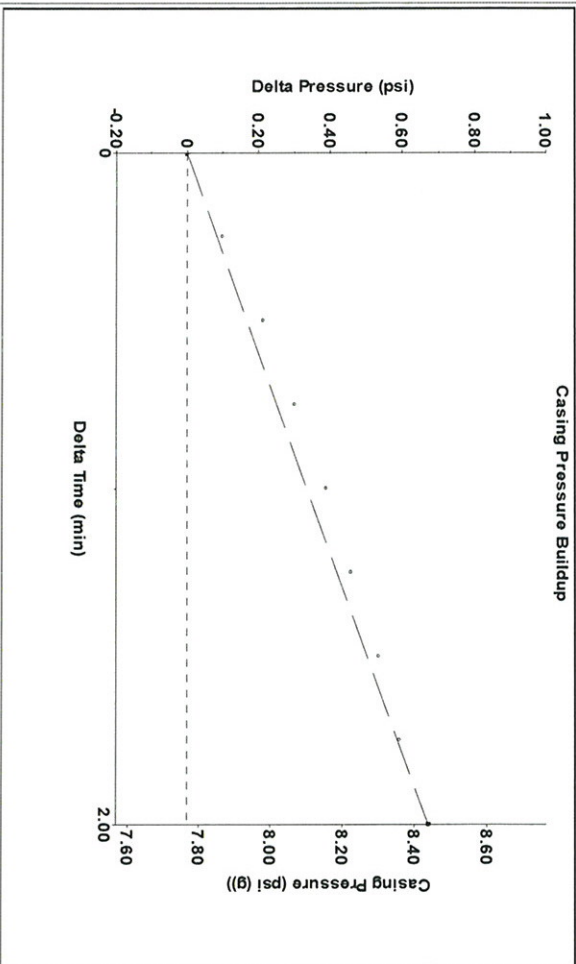


Time 1.094 sec
 Joints 19,8438 Jts
 Depth 629.05 ft

Liquid level calculated with
 user supplied Acoustic Velocity
 Acoustic Velocity 1150 ft/s

Analysis Method: Acoustic Velocity

Production Current	Potential	Casing Pressure	Static
Oil - *-	- *- BBL/D	7.8 psi (g)	Oil Column Height MD 0 ft
Water - *-	- *- BBL/D	Casing Pressure Buildup 0.7 psi	Water Column Height MD - *- ft
Gas - *-	- *- Mscf/D	2.00 min	
IPR Method PBHP/SBHP	Vogel - *-	Gas/Liquid Interface Pressure 8.2 psi (g)	
Production Efficiency 0.0			
Oil 40 deg API		Liquid Level Depth 629.05 ft	
Water 1.05 Sp.Gr:H2O		Tubing Intake Depth - *- ft	
Gas 0.83 Sp.Gr:AIR		Formation Depth 3166.70 ft	
Acoustic Velocity 1150 ft/s			Static BHP 1158.3 psi (g)



Change in Pressure 0.67 psi PT 14472
 Change in Time 2.00 min Range 0 - ? psi

Entered Acoustic Velocity for Liquid Level depth determination

Conservation Division
District Office No. 4
2301 E. 13th Street
Hays, KS 67601-2651



Phone: 785-625-0550
Fax: 785-625-0564
<http://kcc.ks.gov/>

Shari Feist Albrecht, Chair
Jay Scott Emler, Commissioner
Pat Apple, Commissioner

Sam Brownback, Governor

January 21, 2015

Kate Ryan
C12 Kansas Oil, LLC
1900 WAZEE ST.
SUITE 200
DENVER, CO 80202

Re: Temporary Abandonment
API 15-167-07094-00-00
J BOXBERGER 4
NE/4 Sec.26-14S-14W
Russell County, Kansas

Dear Kate Ryan:

Your application for Temporary Abandonment (TA) of the above-listed well is denied for the following reasons(s):

High Fluid Level

In accordance with K.A.R. 82-3-111, this well must be plugged or returned to service by February 20, 2015.

Sincerely,

RICHARD WILLIAMS