



**TEMPORARY ABANDONMENT WELL APPLICATION**

All blanks must be complete

OPERATOR: License# \_\_\_\_\_  
Name: \_\_\_\_\_  
Address 1: \_\_\_\_\_  
Address 2: \_\_\_\_\_  
City: \_\_\_\_\_ State: \_\_\_\_\_ Zip: \_\_\_\_\_ + \_\_\_\_\_  
Contact Person: \_\_\_\_\_  
Phone: (\_\_\_\_\_) \_\_\_\_\_  
Contact Person Email: \_\_\_\_\_  
Field Contact Person: \_\_\_\_\_  
Field Contact Person Phone: (\_\_\_\_\_) \_\_\_\_\_

API No. 15- \_\_\_\_\_  
Spot Description: \_\_\_\_\_  
\_\_\_\_ - \_\_\_\_ - \_\_\_\_ - \_\_\_\_ Sec. \_\_\_\_\_ Twp. \_\_\_\_\_ S. R. \_\_\_\_\_  E  W  
\_\_\_\_\_ feet from  N /  S Line of Section  
\_\_\_\_\_ feet from  E /  W Line of Section  
GPS Location: Lat: \_\_\_\_\_, Long: \_\_\_\_\_  
(e.g. xx.xxxxx) (e.g. -xxx.xxxxx)  
Datum:  NAD27  NAD83  WGS84  
County: \_\_\_\_\_ Elevation: \_\_\_\_\_  GL  KB  
Lease Name: \_\_\_\_\_ Well #: \_\_\_\_\_  
Well Type: (check one)  Oil  Gas  OG  WSW  Other: \_\_\_\_\_  
 SWD Permit #: \_\_\_\_\_  ENHR Permit #: \_\_\_\_\_  
 Gas Storage Permit #: \_\_\_\_\_  
Spud Date: \_\_\_\_\_ Date Shut-In: \_\_\_\_\_

	Conductor	Surface	Production	Intermediate	Liner	Tubing
Size						
Setting Depth						
Amount of Cement						
Top of Cement						
Bottom of Cement						

Casing Fluid Level from Surface: \_\_\_\_\_ How Determined? \_\_\_\_\_ Date: \_\_\_\_\_  
Casing Squeeze(s): \_\_\_\_\_ to \_\_\_\_\_ w / \_\_\_\_\_ sacks of cement, \_\_\_\_\_ to \_\_\_\_\_ w / \_\_\_\_\_ sacks of cement. Date: \_\_\_\_\_  
(top) (bottom) (top) (bottom)  
Do you have a valid Oil & Gas Lease?  Yes  No  
Depth and Type:  Junk in Hole at \_\_\_\_\_  Tools in Hole at \_\_\_\_\_ Casing Leaks:  Yes  No Depth of casing leak(s): \_\_\_\_\_  
(depth) (depth)  
Type Completion:  ALT. I  ALT. II Depth of:  DV Tool: \_\_\_\_\_ w / \_\_\_\_\_ sacks of cement  Port Collar: \_\_\_\_\_ w / \_\_\_\_\_ sack of cement  
(depth) (depth)  
Packer Type: \_\_\_\_\_ Size: \_\_\_\_\_ Inch Set at: \_\_\_\_\_ Feet  
Total Depth: \_\_\_\_\_ Plug Back Depth: \_\_\_\_\_ Plug Back Method: \_\_\_\_\_

**Geological Data:**

Formation Name	Formation Top	Formation Base	Completion Information
1. _____	At: _____	to _____ Feet	Perforation Interval _____ to _____ Feet or Open Hole Interval _____ to _____ Feet
2. _____	At: _____	to _____ Feet	Perforation Interval _____ to _____ Feet or Open Hole Interval _____ to _____ Feet

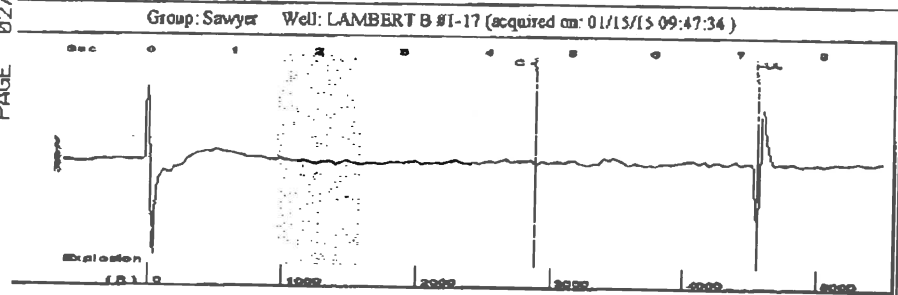
UNDER PENALTY OF PERJURY I HEREBY ATTEST THAT THE INFORMATION CONTAINED HEREIN IS TRUE AND CORRECT TO THE BEST OF MY KNOWLEDGE

Submitted Electronically

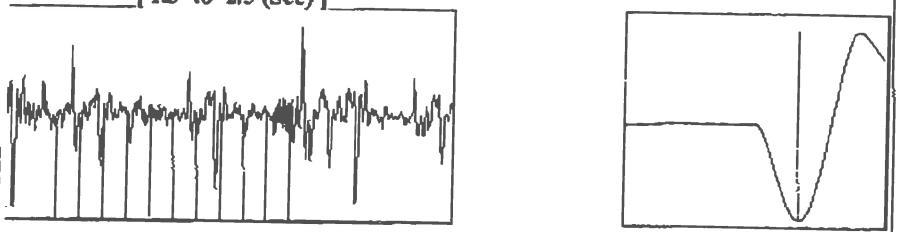
<b>Do NOT Write in This Space - KCC USE ONLY</b>	Date Tested: _____	Results: _____	Date Plugged: _____	Date Repaired: _____	Date Put Back in Service: _____
	Review Completed by: _____ Comments: _____				
TA Approved: <input type="checkbox"/> Yes <input type="checkbox"/> Denied Date: _____					

**Mail to the Appropriate KCC Conservation Office:**

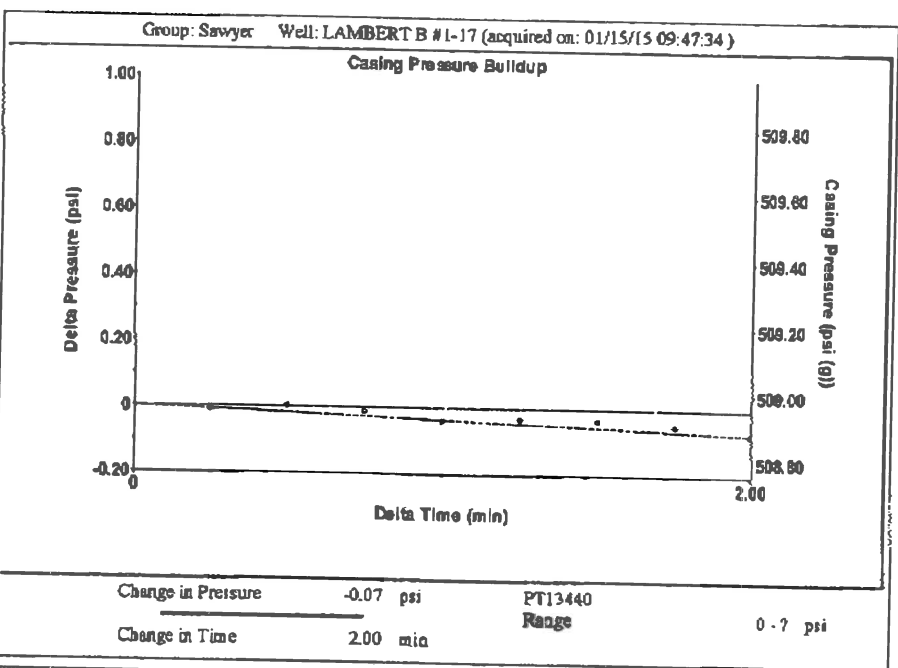
	KCC District Office #1 - 210 E. Frontview, Suite A, Dodge City, KS 67801	Phone 620.225.8888
	KCC District Office #2 / UPGS - 3450 N. Rock Road, Building 600, Suite 601, Wichita, KS 67226	Phone 316.630.4000
	KCC District Office #3 - 1500 SW Seventh Steet, Chanute, KS 66720	Phone 620.432.2300
	KCC District Office #4 - 2301 E. 13th Street, Hays, KS 67601-2651	Phone 785.625.0550



Filter Type High Pass Automatic Collar Count Yes Time 7.22 sec  
 Manual Acoustic Velo 1239.31 ft/s Manual JTS/sec 19.084 Joints 140.177 Jts  
 Depth 4551.56 ft



Analysis Method: Automatic



Group: Sawyer Well: LAMBERT B #1-17 (acquired on: 01/15/15 09:47:34)

Production Current	Potential	Casing Pressure	Producing
Oil -*- BBL/D	-*- BBL/D	509.0 psi (g)	
Water -*- BBL/D	-*- BBL/D	Casing Pressure Buildup	Annular Gas Flow
Gas -*- Mscf/D	-*- Mscf/D	-0.073 psi	0 Mscf/D
		2.00 min	% Liquid
I PR Method Vogel	Gas/Liquid Interface Pressure	572.1 psi (g)	100 %
PBHP/SBHP -*-	Liquid Level Depth		
Production Efficiency 0.0	4551.56 ft		
Oil 40 deg.API	Pump Intake Depth		
Water 1.05 Sp.Gr.H2O	4612.00 ft		
Gas 0.69 Sp.Gr.AIR	Formation Depth		
Acoustic Velocity 1260.82 ft/s	4550.00 ft		

Formation Submergence

Total Gaseous Liquid Column HT (TVD)	60 ft
Equivalent Gas Free Liquid HT (TVD)	60 ft

Acoustic Test

Pump Intake

591.6 psi (g)
Producing BHP
572.1 psi (g)
Static BHP
-*- psi (g)

Group: Sawyer Well: LAMBERT B #1-17 (acquired on: 01/15/15 09:47:34)

Acoustic Velocity	1260.82 ft/s	Joints counted	81
Joints Per Second	19.4151 jts/sec	Joints to liquid level	140.177
Depth to liquid level	4551.56 ft	Filter Width	17.084
Automatic Collar Count	Yes	Time to 1st Collar	0.4
			21.084
			4.572

Conservation Division  
District Office No. 1  
210 E. Frontview, Suite A  
Dodge City, KS 67801



Phone: 620-225-8888  
Fax: 620-225-8885  
<http://kcc.ks.gov/>

Shari Feist Albrecht, Chair  
Jay Scott Emler, Commissioner  
Pat Apple, Commissioner

Sam Brownback, Governor

January 20, 2015

Loveness Mpanje  
F. G. Holl Company L.L.C.  
9431 E CENTRAL STE 100  
WICHITA, KS 67206-2563

Re: Temporary Abandonment  
API 15-007-22186-00-03  
LAMBERT B 1-17  
NE/4 Sec.17-30S-13W  
Barber County, Kansas

Dear Loveness Mpanje:

Your application for Temporary Abandonment (TA) of the above-listed well is denied for the following reasons(s):

**Shut-in Over 10 years**

In accordance with K.A.R. 82-3-111, this well must be plugged or returned to service by February 19, 2015.

You may file an application for an exception to the 10-year limitation in K.A.R. 82-3-111 to demonstrate why it is necessary to TA the above well for more than (10) years. You must notify the Commission in writing no later than February 19, 2015 of your intention to file the application, and your complete application is due March 21, 2015. All applications and written notifications must be sent to the attention of the Executive Director at the Kansas Corporation Commission Conservation Division at 130 South Market, Room 2078, Wichita, Kansas 67202.

You may contact me at the number above if you have any questions.

Sincerely,

Michael Maier