

1240613

Operator Name: _____ Lease Name: _____ Well #: _____

Sec. _____ Twp. _____ S. R. _____ East West County: _____

INSTRUCTIONS: Show important tops of formations penetrated. Detail all cores. Report all final copies of drill stems tests giving interval tested, time tool open and closed, flowing and shut-in pressures, whether shut-in pressure reached static level, hydrostatic pressures, bottom hole temperature, fluid recovery, and flow rates if gas to surface test, along with final chart(s). Attach extra sheet if more space is needed.

Final Radioactivity Log, Final Logs run to obtain Geophysical Data and Final Electric Logs must be emailed to kcc-well-logs@kcc.ks.gov. Digital electronic log files must be submitted in LAS version 2.0 or newer AND an image file (TIFF or PDF).

Drill Stem Tests Taken <input type="checkbox"/> Yes <input type="checkbox"/> No <i>(Attach Additional Sheets)</i> Samples Sent to Geological Survey <input type="checkbox"/> Yes <input type="checkbox"/> No Cores Taken <input type="checkbox"/> Yes <input type="checkbox"/> No Electric Log Run <input type="checkbox"/> Yes <input type="checkbox"/> No List All E. Logs Run: _____	<input type="checkbox"/> Log Formation (Top), Depth and Datum <input type="checkbox"/> Sample Name Top Datum
--	---

CASING RECORD <input type="checkbox"/> New <input type="checkbox"/> Used							
Report all strings set-conductor, surface, intermediate, production, etc.							
Purpose of String	Size Hole Drilled	Size Casing Set (In O.D.)	Weight Lbs. / Ft.	Setting Depth	Type of Cement	# Sacks Used	Type and Percent Additives

ADDITIONAL CEMENTING / SQUEEZE RECORD				
Purpose:	Depth Top Bottom	Type of Cement	# Sacks Used	Type and Percent Additives
<input type="checkbox"/> Perforate <input type="checkbox"/> Protect Casing <input type="checkbox"/> Plug Back TD <input type="checkbox"/> Plug Off Zone				

Did you perform a hydraulic fracturing treatment on this well? Yes No *(If No, skip questions 2 and 3)*

Does the volume of the total base fluid of the hydraulic fracturing treatment exceed 350,000 gallons? Yes No *(If No, skip question 3)*

Was the hydraulic fracturing treatment information submitted to the chemical disclosure registry? Yes No *(If No, fill out Page Three of the ACO-1)*

Shots Per Foot	PERFORATION RECORD - Bridge Plugs Set/Type Specify Footage of Each Interval Perforated	Acid, Fracture, Shot, Cement Squeeze Record <i>(Amount and Kind of Material Used)</i>	Depth

TUBING RECORD:	Size:	Set At:	Packer At:	Liner Run: <input type="checkbox"/> Yes <input type="checkbox"/> No
----------------	-------	---------	------------	---

Date of First, Resumed Production, SWD or ENHR.	Producing Method:
	<input type="checkbox"/> Flowing <input type="checkbox"/> Pumping <input type="checkbox"/> Gas Lift <input type="checkbox"/> Other <i>(Explain)</i> _____

Estimated Production Per 24 Hours	Oil Bbls.	Gas Mcf	Water Bbls.	Gas-Oil Ratio	Gravity

DISPOSITION OF GAS: <input type="checkbox"/> Vented <input type="checkbox"/> Sold <input type="checkbox"/> Used on Lease <i>(If vented, Submit ACO-18.)</i>	METHOD OF COMPLETION: <input type="checkbox"/> Open Hole <input type="checkbox"/> Perf. <input type="checkbox"/> Dually Comp. <input type="checkbox"/> Commingled <i>(Submit ACO-5)</i> <input type="checkbox"/> Other <i>(Specify)</i> _____	PRODUCTION INTERVAL: _____ _____
--	--	---

Adam Eldani Geo-Log/Report

WellSight Systems

Scale 1:240 (5"=100') Imperial

Measured Depth Log

Well Name: #1 Weisensee 1B
Location: SEC 1-TOWNSHIP 21S- RANGE 18W PAWNEE COUNTY
License Number: API 15-145-21787 Region: KANSAS
Spud Date: 10/15/2014 Drilling Completed: 10/26/2014
Surface Coordinates: 1500' FNL & 1500' FWL
150' N & 150' W of NW SE NW
Bottom Hole
Coordinates: Deviation Surveys are detailed through out the Geo-Report.
Ground Elevation (ft): 2106' K.B. Elevation (ft): 2115'
Logged Interval (ft): 3200' To: 4250' Total Depth (ft): 4252'
Formation: Precambrian
Type of Drilling Fluid: Mud-Co Chemical

Printed by MUD.LOG from WellSight Systems 1-800-447-1534 www.WellSight.com

OPERATOR

Company: Ritchie Exploration Inc. (drilled by Southwind Drilling Rig #2)
Address: 8100 E. 22nd ST. N. #700
Wichita, KS, 67278-3188

GEOLOGIST

Name: Adam M.A. Eldani
Company: Ritchie Exploration Inc.
Address: 8100 E. 22nd ST. N. #700
Wichita, KS, 67278-3188

Tops & Daily Drilling Report

TOPS: DRILLING REPORT

Sample Tops:

Anhydrite: 1167'+948
B/Anhydrite: 1188'+927
Heebner: 3493'-1378
Lansing: 3564'-1449
Muncie Sh: 3709'-1594
Stark Sh: 3780'-1665
Hush: 3820'-1705
BKC: 3847'-1732
Marmaton: 3881'-1766
Pawnee: 3920'-1805
Fort Scott: 3944'-1829
Cherokee SH: 3958'-1843
Conglomerate: 3967'-1852
Arbuckle: 4008'-1893
RTD: 4250'-2135

E-log Tops:

Anhydrite: 1180'+935
B/Anhydrite: 1196'+919
Heebner: 3495'-1380
Lansing: 3566'-1451
Muncie Sh: 3705'-1590
Stark Sh: 3781'-1666
Hush: 3817'-1702
BKC: 3832'-1717
Marmaton: 3854'-1739
Pawnee: 3921'-1806
Fort Scott: 3935'-1820
Cherokee Sh: 3949'-1834
Conglomerate: 3956'-1841
Arbuckle: 4007'-1892
LTD: 4252'-2137

DAILY DRILLING REPORT:

DATE DEPTH:

10/15 SPUD
10/16 1174'
10/17 1390'
10/18 2145'
10/19 2860'
10/20 3445'
10/21 3814'
10/22 3844'
10/23 3990'
10/24 4147'
10/25 4250'
10/26 4250'

Misc.

All DST's info. are NEAR the correct log depth.

RIG: Southwind Rig #2
TOOL PUSHER: Bill Sanders
MUD: MUD CO. (Jason Whiting)
GAS DETECTOR: MBC Well Service, M-7

DRILL STEM TEST'S: Diamond Testing, Mike Cochran

LOGS: NABORS (RUPP)

OFFICE: PETER FIORINI

Comments

Drilling at 1174' at 7:00 a.m. Ran 28 jts new 24# 8-5/8" surface casing. Tally at 1162', set at 1173'. Cemented with 225 sacks 65/35, 3% cc, 6% gel and 175 sacks class A, 3% cc, 2% gel. Cement circulated. Plug down at 3:30 p.m. Drilled out plug at 3:30 a.m. on 10/17/14.

Plug and Abandon. 1st plug set at 3925' with 50 sacks of 60/40 Poz, 4% gel, ¼# flo-seal; 2nd plug set at 1200' with 50 sacks; 3rd plug set at 480' with 40 sacks; 4th plug set at 60' with 20 sacks; 160 total sacks. 30 sacks in rat hole and 20 sacks in mouse hole. Job complete at 1:00 p.m. Plugging orders by Larry Harris with the KCC.

Well Log Surveys BY: NABORS. Compensated Denisty/ Neutron Log, Dual Induction & Sonic.

SAMPLES WILL BE DEPOSITED WITH KANSAS GEOLOGICAL SURVEY.

RESPECTFULLY SUBMITTED

Adam M. A. Eldani

ROCK TYPES

	Anhy		Clyst		Igne		Shale		Till
	Bent		Coal		Lmst		Shcol		Red shale
	Brec		Congl		Meta		Shgy		
	Carb sh		Dol		Mrlst		Sltst		
	Cht		Gyp		Salt		Ss		

ACCESSORIES

MINERAL		Hvymn		Belm		Pellet	TEXTURE	
		Kaol		Bioclst		Pisolite		Boundst
		Marl		Brach		Plant		Chalky
		Minxl		Bryozoa		Strom		Cryxln
		Nodule		Cephal				Earthy
		Phos		Coral	STRINGER			Finexln
		Pyr		Crin		Anhy		Grainst
		Salt		Echin		Arg		Lithogr
		Sandy		Fish		Bent		Microxln
		Silt		Foram		Coal		Mudst
		Sil		Fossil		Dol		Packst
		Sulphur		Fuss		Gyp		Wackest
				Gastro		Ls		
	FOSSIL			Oolite		Mrst		
		Algae		Oomold		Sltstrg		
		Amph		Ostra		Ssstrg		
				Pelec				

OTHER SYMBOLS

POROSITY		Vuggy	ROUNDING		Even		Dst_alt
					Spotted		Dst
	SORTING				Ques		
		Well			Dead	EVENT	
		Moderate					Rft
		Poor	OIL SHOW	INTERVAL			Sidewall
					Core		
					Dst		

Curve Track 1

ROP (min/ft)

Gamma (API)



New Track

Depth

Lithology

Geological Descriptions

Neutron Porosity

TG, C1-C5

0 ROP (min/ft) 10
10 Gamma (API) 150

23

Neutron Porosity (NAPI)
1 10 100

ROP (min/ft) 1800'
Gamma (API) 150

2400

Neutron Porosity (NAPI)
1 10 100

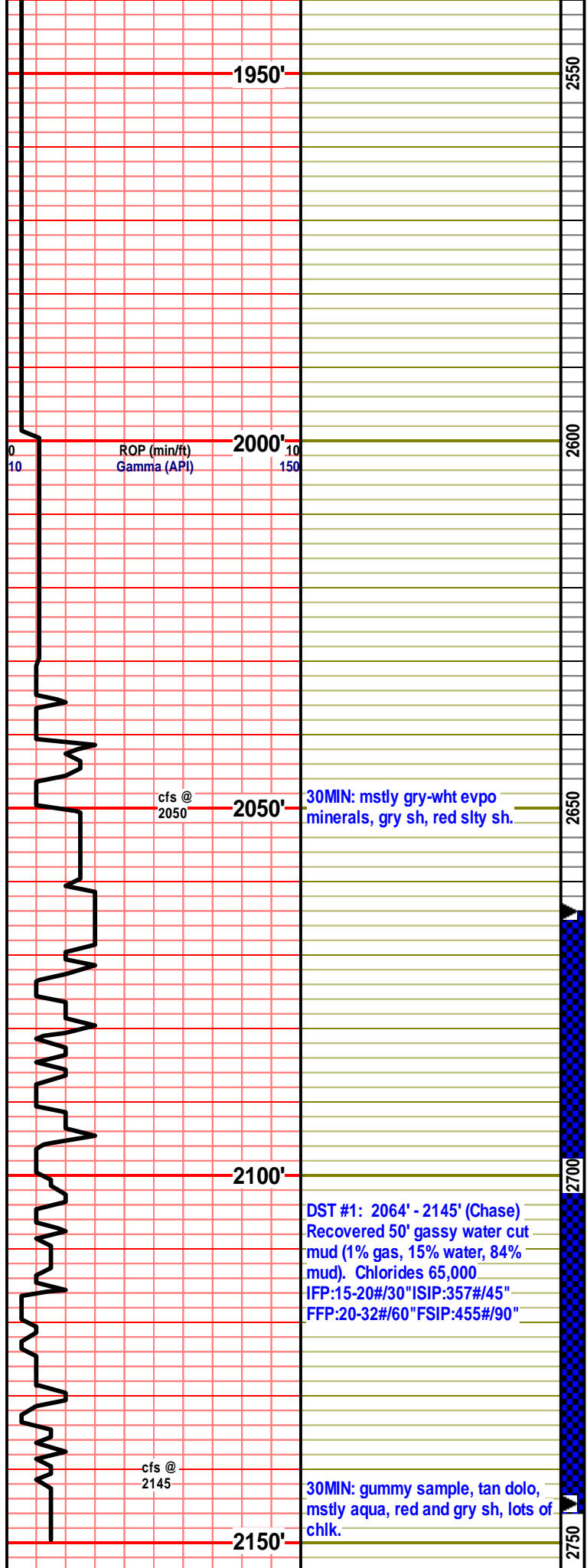
1850'

2450

1900'

2500

e-log tops:
Anhydrite: 1180'+935
B/Anhydrite: 1196'+919



NO SAMPLES AVAILABLE

NO SAMPLES AVAILABLE

2020: mstly salt and sh some red slty sh.

Neutron Porosity (NAPI)
1 10 100

2040: sig incrs in gry sh, red slty sh, salt.

2060: lots of gry sh, evpo minerals, wht fn grn dolo, ns.

2080: aa, show of gry-lght gry inxln lm, dense, poor por, ns.

30MIN: mstly gry-wht evpo minerals, gry sh, red slty sh.

2100: incrs in chlk, mstly gry-red gummy sh.

2120: aa, incrs in gry-tan xln lm, gry fn grn dolo, fair por, no odr, ns.

DST #1: 2064' - 2145' (Chase)
Recovered 50' gassy water cut mud (1% gas, 15% water, 84% mud). Chlorides 65,000
IFP:15-20#/30" ISIP:357#/45"
FFP:20-32#/60" FSIP:455#/90"

2145: sig incrs in gry-drk crm dolo, fn grn, fair intr prctl por, no odr, ns.

30MIN: gummy sample, tan dolo, mstly aqua, red and gry sh, lots of chlk.

ROP (min/ft)
Gamma (API)

0 10
10 150



2800
2850
2900
2950

NO SAMPLES AVAILABLE

Neutron Porosity (NAPI)

1 10 100

NO SAMPLES AVAILABLE

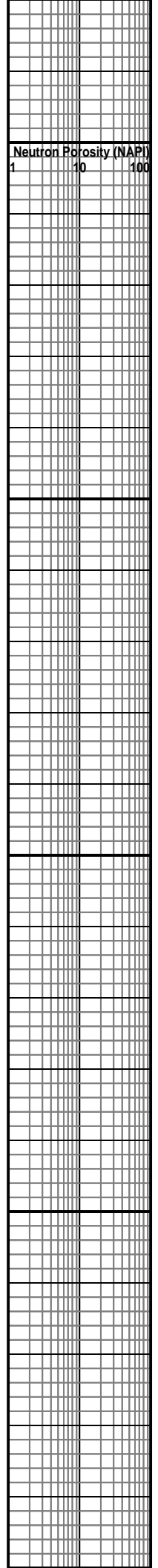


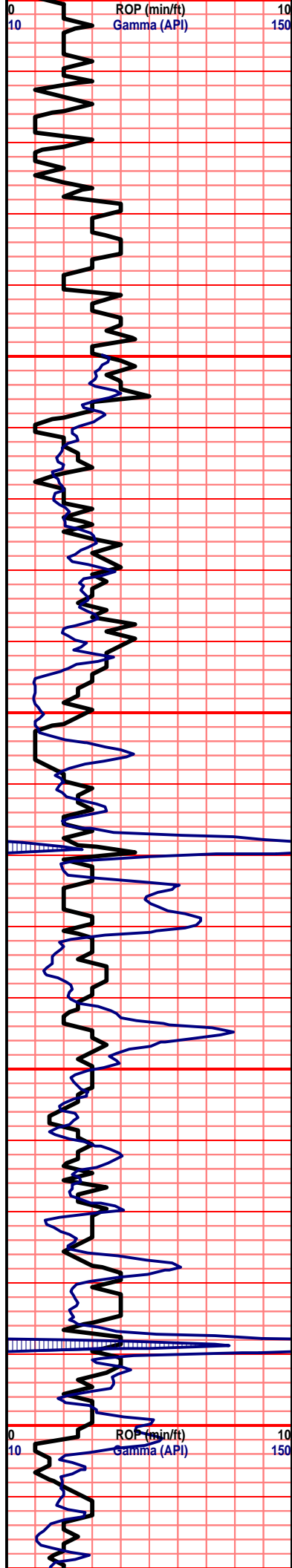
MUD INFO.
10/19/14
wt. 9.6
vis. 28
filtrate: NC
chloride: 67,00
LCM: 0

NO SAMPLES AVAILABLE

NO SAMPLES AVAILABLE

NO SAMPLES AVAILABLE





MUD DISPLACEMENT @ 3250'

location: sit on a winter wheat farm.

GEOLOGIST ON LOCATION @ 3317'



3250: mstly gry sh, tan-gry xln lm, dense, poor xln por, chlky lm, no odr, ns.

3260: incrs in drk gry-blk sh, gry chlky lm, gry xln lm, dense, no odr, ns.

3270: aa, incrs in gry xln lm, incrs in drk crm chrty foss lm, poor-no por, no odr, ns.

3280: aa, incrs in drk crm inxln lm, poor por, no odr, ns.

3290: aa, incrs in chlky lm, incrs in tan-brwn xln lm, sli foss, dense, no odr, ns.

3300: aa, incrs in gry foss xln lm, dense, well cemntd, no odr, ns.

3310: aa, sli incrs in drk crm chlky lm, few crm dolo, fn grn, well cemntd, semi dense, no odr, ns.

3320: incrs in tan xln lm, cemnt flooded, poor-no por, no odr, ns.

3330: incrs in crm chlky lm, incrs in drk-tan inxln lm, dense, no odr, ns.

3340: aa, incrs in tanish crm fn xln lm, no vis por, no odr, ns.

3350: aa, incrs brwn-crm fn xln lm, no vis por, no odr, ns.

3360: incrs in gry-clk carb sh, incrs in gry inxln lm, poor-no por, no odr, ns.

3370: incrs in drk crm foss lm, mstly xln, dense, no odr, ns.

3380: mstly gry xln lm, lots of chrt nod, chrty lm, poor-no por, no odr, ns.

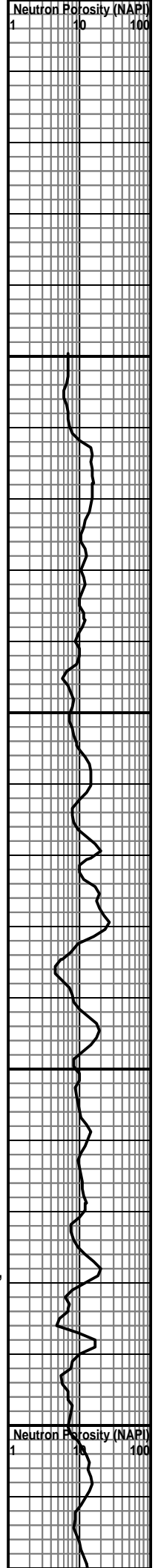
3390: slight incrs in chlky-gry sh, mstly crm-gry xln lm, dense, no odr, ns.

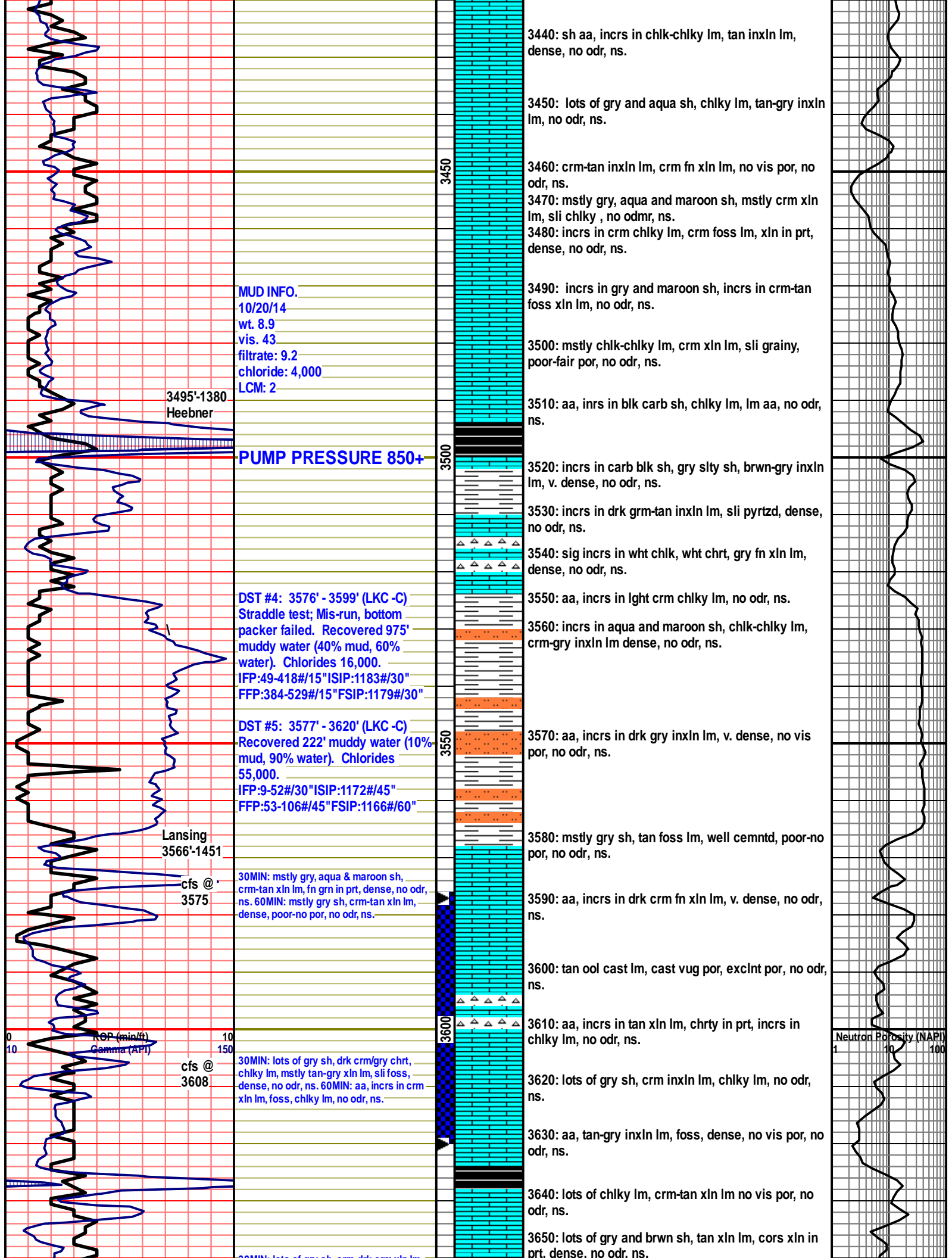
3400: aa, no sig change, no odr, ns.

3410: incrs in gry-drk tan inxln lm, incrs in foss chrt-chrty lm, no odr, ns.

3420: incrs in wht-brwn chrt, shw of lght crm dolo, fn grn, tan inxln lm, dense, no vis por, no odr, ns.

3430: sig incrs in gry sh, chlky lm, crm-gry inxln lm, dense, no odr, ns.





3440: sh aa, incrs in chlk-chlky lm, tan inxln lm, dense, no odr, ns.

3450: lots of gry and aqua sh, chlky lm, tan-gry inxln lm, no odr, ns.

3460: crm-tan inxln lm, crm fn xln lm, no vis por, no odr, ns.

3470: mstly gry, aqua and maroon sh, mstly crm xln lm, sli chlky, no odmr, ns.

3480: incrs in crm chlky lm, crm foss lm, xln in prt, dense, no odr, ns.

MUD INFO.
 10/20/14
 wt. 8.9
 vis. 43
 filtrate: 9.2
 chloride: 4,000
 LCM: 2

3490: incrs in gry and maroon sh, incrs in crm-tan foss xln lm, no odr, ns.

3500: mstly chlk-chlky lm, crm xln lm, sli grainy, poor-fair por, no odr, ns.

3495'-1380
 Heebner

3510: aa, inrs in blk carb sh, chlky lm, lm aa, no odr, ns.

PUMP PRESSURE 850+

3520: incrs in carb blk sh, gry slty sh, brwn-gry inxln lm, v. dense, no odr, ns.

3530: incrs in drk grm-tan inxln lm, sli pyrtzd, dense, no odr, ns.

3540: sig incrs in wht chlky, wht chrt, gry fn xln lm, dense, no odr, ns.

DST #4: 3576' - 3599' (LKC-C)
 Straddle test; Mis-run, bottom packer failed. Recovered 975' muddy water (40% mud, 60% water). Chlorides 16,000.
 IFP:49-418#/15" ISIP:1183#/30"
 FFP:384-529#/15" FSIP:1179#/30"

3550: aa, incrs in lght crm chlky lm, no odr, ns.

3560: incrs in aqua and maroon sh, chlk-chlky lm, crm-gry inxln lm dense, no odr, ns.

DST #5: 3577' - 3620' (LKC-C)
 Recovered 222' muddy water (10% mud, 90% water). Chlorides 55,000.
 IFP:9-52#/30" ISIP:1172#/45"
 FFP:53-106#/45" FSIP:1166#/60"

3570: aa, incrs in drk gry inxln lm, v. dense, no vis por, no odr, ns.

Lansing
 3566'-1451

3580: mstly gry sh, tan foss lm, well cemntd, poor-no por, no odr, ns.

30MIN: mstly gry, aqua & maroon sh, crm-tan xln lm, fn grn in prt, dense, no odr, ns. 60MIN: mstly gry sh, crm-tan xln lm, dense, poor-no por, no odr, ns.

3590: aa, incrs in drk crm fn xln lm, v. dense, no odr, ns.

cfs @
 3575

3600: tan ool cast lm, cast vug por, exclnt por, no odr, ns.

3610: aa, incrs in tan xln lm, chrtly in prt, incrs in chlky lm, no odr, ns.

ROP (min/ft)
 Gamma (API)

cfs @
 3608

30MIN: lots of gry sh, drk crm/gry chrt, chlky lm, mstly tan-gry xln lm, sli foss, dense, no odr, ns. 60MIN: aa, incrs in crm xln lm, foss, chlky lm, no odr, ns.

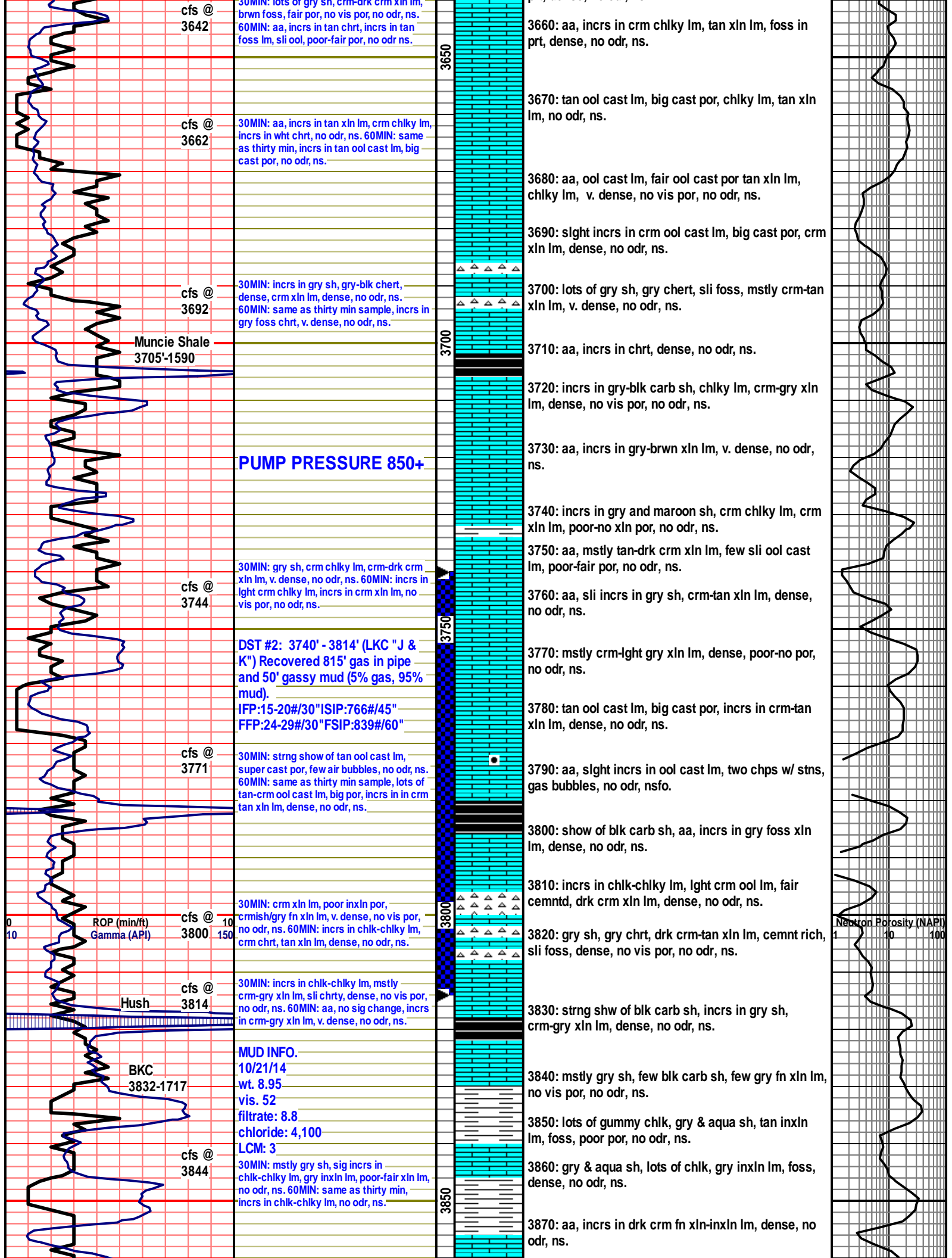
3620: lots of gry sh, crm inxln lm, chlky lm, no odr, ns.

3630: aa, tan-gry inxln lm, foss, dense, no vis por, no odr, ns.

3640: lots of chlky lm, crm-tan xln lm no vis por, no odr, ns.

3650: lots of gry and brwn sh, tan xln lm, cors xln in prt, dense, no odr, ns.

Neutron Porosity (NAPI)
 1 10 100



cfs @ 3642

30MIN: lots of gry sh, crm-drk crm xln lm, brwn foss, fair por, no vis por, no odr, ns. 60MIN: aa, incrs in tan chrt, incrs in tan foss lm, sli ool, poor-fair por, no odr ns.

3660: aa, incrs in crm chlky lm, tan xln lm, foss in prt, dense, no odr, ns.

cfs @ 3662

30MIN: aa, incrs in tan xln lm, crm chlky lm, incrs in wht chrt, no odr, ns. 60MIN: same as thirty min, incrs in tan ool cast lm, big cast por, no odr, ns.

3670: tan ool cast lm, big cast por, chlky lm, tan xln lm, no odr, ns.

3680: aa, ool cast lm, fair ool cast por tan xln lm, chlky lm, v. dense, no vis por, no odr, ns.

3690: slight incrs in crm ool cast lm, big cast por, crm xln lm, dense, no odr, ns.

cfs @ 3692

30MIN: incrs in gry sh, gry-blk chert, dense, crm xln lm, dense, no odr, ns. 60MIN: same as thirty min sample, incrs in gry foss chrt, v. dense, no odr, ns.

3700: lots of gry sh, gry chert, sli foss, mstly crm-tan xln lm, v. dense, no odr, ns.

Muncie Shale 3705'-1590'

3700

3710: aa, incrs in chrt, dense, no odr, ns.

3720: incrs in gry-blk carb sh, chlky lm, crm-gry xln lm, dense, no vis por, no odr, ns.

PUMP PRESSURE 850+

3730: aa, incrs in gry-brwn xln lm, v. dense, no odr, ns.

3740: incrs in gry and maroon sh, crm chlky lm, crm xln lm, poor-no xln por, no odr, ns.

cfs @ 3744

30MIN: gry sh, crm chlky lm, crm-drk crm xln lm, v. dense, no odr, ns. 60MIN: incrs in lght crm chlky lm, incrs in crm xln lm, no vis por, no odr, ns.

3750: aa, mstly tan-drk crm xln lm, few sli ool cast lm, poor-fair por, no odr, ns.

3760: aa, sli incrs in gry sh, crm-tan xln lm, dense, no odr, ns.

DST #2: 3740' - 3814' (LKC "J & K") Recovered 815' gas in pipe and 50' gassy mud (5% gas, 95% mud). IFP:15-20#/30" ISIP:766#/45" FFP:24-29#/30" FSIP:839#/60"

3750

3770: mstly crm-lght gry xln lm, dense, poor-no por, no odr, ns.

3780: tan ool cast lm, big cast por, incrs in crm-tan xln lm, dense, no odr, ns.

cfs @ 3771

30MIN: strng show of tan ool cast lm, super cast por, few air bubbles, no odr, ns. 60MIN: same as thirty min sample, lots of tan-crm ool cast lm, big por, incrs in in crm tan xln lm, dense, no odr, ns.

3790: aa, slight incrs in ool cast lm, two chps w/ stns, gas bubbles, no odr, nsfo.

3800: show of blk carb sh, aa, incrs in gry foss xln lm, dense, no odr, ns.

ROP (min/ft) Gamma (API)

cfs @ 3800

30MIN: crm xln lm, poor inxln por, crmish/gry fn xln lm, v. dense, no vis por, no odr, ns. 60MIN: incrs in chl-chlky lm, crm chrt, tan xln lm, dense, no odr, ns.

3800

3810: incrs in chl-chlky lm, lght crm ool lm, fair cemntd, drk crm xln lm, dense, no odr, ns.

3820: gry sh, gry chrt, drk crm-tan xln lm, cemnt rich, sli foss, dense, no vis por, no odr, ns.

Hush cfs @ 3814

30MIN: incrs in chl-chlky lm, mstly crm-gry xln lm, sli chrt, dense, no vis por, no odr, ns. 60MIN: aa, no sig change, incrs in crm-gry xln lm, v. dense, no odr, ns.

3830: strng shw of blk carb sh, incrs in gry sh, crm-gry xln lm, dense, no odr, ns.

BKC 3832-1717

MUD INFO. 10/21/14 wt. 8.95 vis. 52 filtrate: 8.8 chloride: 4,100 LCM: 3

cfs @ 3844

30MIN: mstly gry sh, sig incrs in chl-chlky lm, gry inxln lm, poor-fair xln lm, no odr, ns. 60MIN: same as thirty min, incrs in chl-chlky lm, no odr, ns.

3850

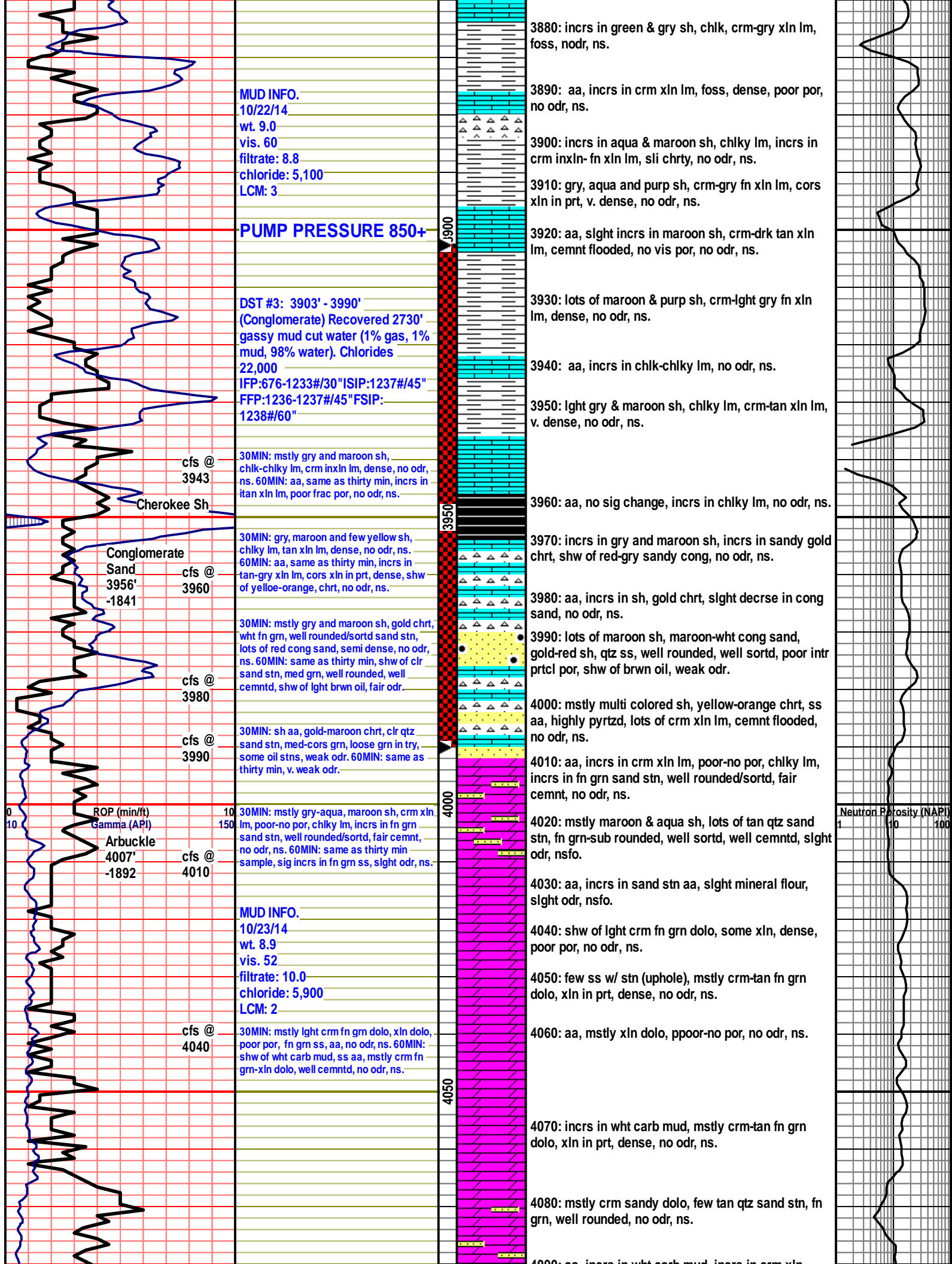
3840: mstly gry sh, few blk carb sh, few gry fn xln lm, no vis por, no odr, ns.

3850: lots of gummy chl, gry & aqua sh, tan inxln lm, foss, poor por, no odr, ns.

3860: gry & aqua sh, lots of chl, gry inxln lm, foss, dense, no odr, ns.

3870: aa, incrs in drk crm fn xln-inxln lm, dense, no odr, ns.

Neutron Porosity (NAPI)



MUD INFO.
 10/22/14
 wt. 9.0
 vis. 60
 filtrate: 8.8
 chloride: 5,100
 LCM: 3

PUMP PRESSURE 850+

DST #3: 3903' - 3990'
 (Conglomerate) Recovered 2730'
 gassy mud cut water (1% gas, 1% mud, 98% water). Chlorides 22,000
 IFP:676-1233#/30"ISIP:1237#/45"
 FFP:1236-1237#/45"FSIP:1238#/60"

cfs @ 3943
 Cherokee Sh

Conglomerate Sand
 cfs @ 3956' -1841

cfs @ 3980
 30MIN: mstly gry and maroon sh, gold chrt, wht fn grn, well rounded/sortd sand stn, lots of red cong sand, semi dense, no odr, ns. 60MIN: same as thirty min, shw of clr sand stn, med grn, well rounded, well cemntd, shw of lght brwn oil, fair odr.

cfs @ 3990
 30MIN: sh aa, gold-maroon chrt, clr qtz sand stn, med-cors grn, loose grn in try, some oil stns, weak odr. 60MIN: same as thirty min, v. weak odr.

ROP (min/ft) Gamma (API)
 Arbuckle
 cfs @ 4007' -1892

30MIN: mstly gry-aqua, maroon sh, crm xln lm, poor-no por, chlky lm, incrs in fn grn sand stn, well rounded/sortd, fair cemnt, no odr, ns. 60MIN: same as thirty min sample, sig incrs in fn grn ss, slight odr, ns.

MUD INFO.
 10/23/14
 wt. 8.9
 vis. 52
 filtrate: 10.0
 chloride: 5,900
 LCM: 2

cfs @ 4040
 30MIN: mstly lght crm fn grn dolo, xln dolo, poor por, fn grn ss, aa, no odr, ns. 60MIN: shw of wht carb mud, ss aa, mstly crm fn grn-xln dolo, well cemntd, no odr, ns.

3880: incrs in green & gry sh, chlky, crm-gry xln lm, foss, nodr, ns.

3890: aa, incrs in crm xln lm, foss, dense, poor por, no odr, ns.

3900: incrs in aqua & maroon sh, chlky lm, incrs in crm inxln- fn xln lm, sli chrty, no odr, ns.

3910: gry, aqua and purp sh, crm-gry fn xln lm, cors xln in prt, v. dense, no odr, ns.

3920: aa, slight incrs in maroon sh, crm-drk tan xln lm, cemnt flooded, no vis por, no odr, ns.

3930: lots of maroon & purp sh, crm-lght gry fn xln lm, dense, no odr, ns.

3940: aa, incrs in chlky-chlky lm, no odr, ns.

3950: lght gry & maroon sh, chlky lm, crm-tan xln lm, v. dense, no odr, ns.

3960: aa, no sig change, incrs in chlky lm, no odr, ns.

3970: incrs in gry and maroon sh, incrs in sandy gold chrt, shw of red-gry sandy cong, no odr, ns.

3980: aa, incrs in sh, gold chrt, slight decrse in cong sand, no odr, ns.

3990: lots of maroon sh, maroon-wht cong sand, gold-red sh, qtz ss, well rounded, well sortd, poor intr prtcl por, shw of brwn oil, weak odr.

4000: mstly multi colored sh, yellow-orange chrt, ss aa, highly pyrtzd, lots of crm xln lm, cemnt flooded, no odr, ns.

4010: aa, incrs in crm xln lm, poor-no por, chlky lm, incrs in fn grn sand stn, well rounded/sortd, fair cemnt, no odr, ns.

4020: mstly maroon & aqua sh, lots of tan qtz sand stn, fn grn-sub rounded, well sortd, well cemntd, slight odr, nsfo.

4030: aa, incrs in sand stn aa, slight mineral flour, slight odr, nsfo.

4040: shw of lght crm fn grn dolo, some xln, dense, poor por, no odr, ns.

4050: few ss w/ stn (uphole), mstly crm-tan fn grn dolo, xln in prt, dense, no odr, ns.

4060: aa, mstly xln dolo, ppoor-no por, no odr, ns.

4070: incrs in wht carb mud, mstly crm-tan fn grn dolo, xln in prt, dense, no odr, ns.

4080: mstly crm sandy dolo, few tan qtz sand stn, fn grn, well rounded, no odr, ns.

4090: aa, incrs in wht carb mud, incrs in crm xln

Neutron Porosity (NAPI)
 1 10 100

BIT PROBLEMS DURING THIS INTERVAL 14 MIN AVERAGE.

Granite
4157'-2042

MUD INFO.
10/24/14
wt. 9.1
vis. 50
filtrate: 12.4
chloride: 5,900
LCM: 2

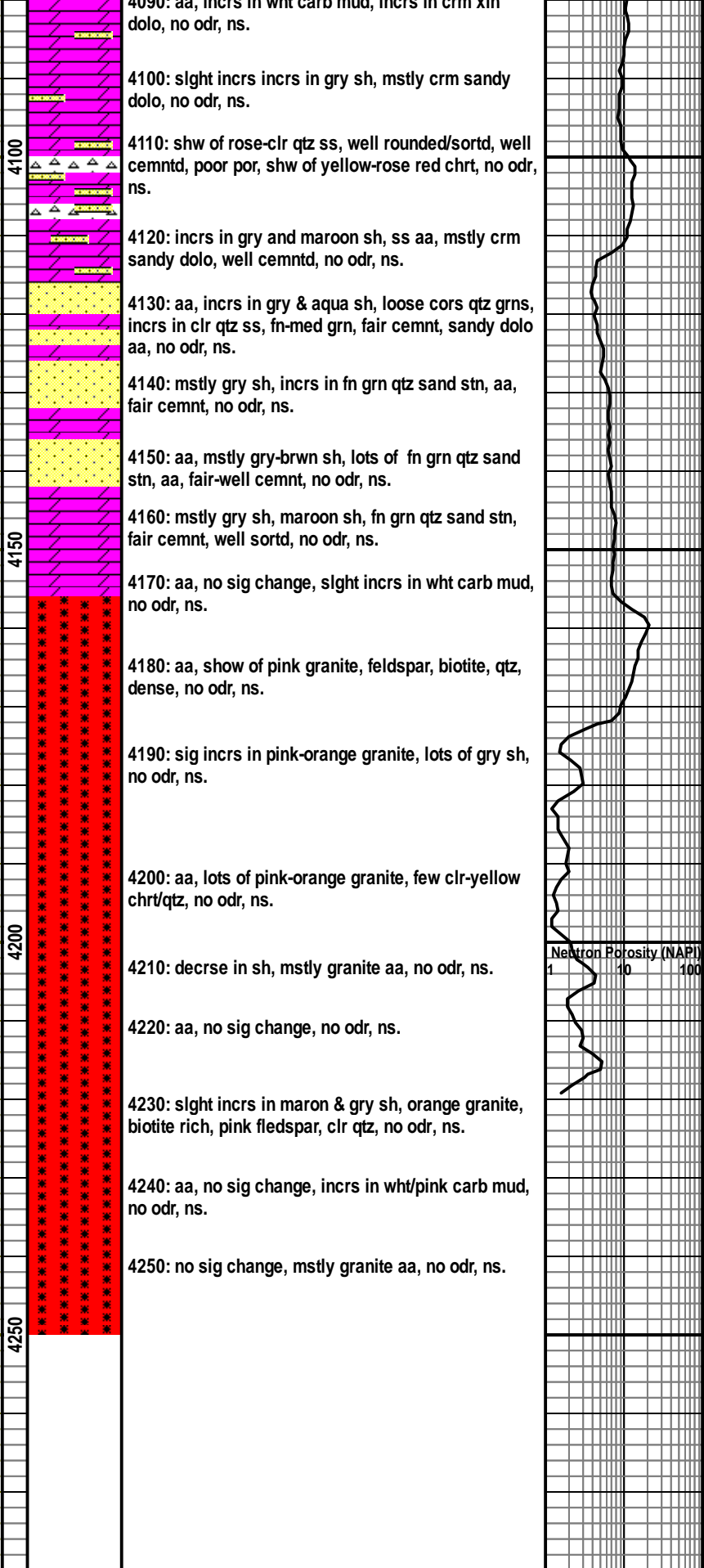
PUMP PRESSURE 850+

BIT PROBLEMS DURING THIS INTERVAL 14 MIN AVERAGE.

ROP (ft/min) 0 10
Gamma (API) 10 150

Neutron Porosity (NAPI) 1 10 100

60MIN: lots of aqua, gry, maroon sh, stly in prt, wht-pink carb mud, mstly pink-orange granite, biotite rich, k-feldspar, qtz, no odr, ns.





#1 Weisensee 1B

1500' FNL & 1500' FWL

150' N & 150' W of NW SE NW Section 1-21S-18W

Pawnee County, Kansas

API# 15-145-21787-0000

Elevation: GL: 2106', KB: 2115'

Sample Tops			Ref. Well
Anhydrite	1167'	+948	-10
B/Anhydrite	1188'	+927	-9
Heebner	3493'	-1378	-4
Lansing	3564'	-1449	+3
Muncie Shale	3709'	-1594	-2
Stark Shale	3780'	-1665	+5
Hush	3820'	-1705	-3
BKC	3847'	-1732	-1
Marmaton	3881'	-1766	-10
Pawnee	3920'	-1805	+7
Fort Scott	3944'	-1829	Flat
Cherokee Shale	3958'	-1843	-3
Conglomerate	3967'	-1852	-8
Arbuckle	4008'	-1893	-27
RTD	4250'	-2135	

ALLIED OIL & GAS SERVICES, LLC 063905

Federal Tax I.D. # 20-8651475

REMIT TO P.O. BOX 93999
SOUTHLAKE, TEXAS 76092

SERVICE POINT:
Great Bend KS

DATE <u>10-26-14</u>	SEC. <u>1</u>	TWP. <u>23</u>	RANGE <u>18</u>	CALLED OUT	ON LOCATION <u>6:00 Am</u>	JOB START <u>12:00 Pm</u>	JOB FINISH <u>1:00 Pm</u>
LEASE <u>Wigence</u>		WELL# <u>18</u>	LOCATION <u>Pawnee Root west TRD</u>		COUNTY <u>Pawnee</u>	STATE <u>KS</u>	
OLD OR <u>NEW</u> (Circle one)			South into				

CONTRACTOR
TYPE OF JOB PTA
HOLE SIZE 2 7/8 T.D.
CASING SIZE DEPTH
TUBING SIZE DEPTH
DRILL PIPE 4 1/2 DEPTH 3925
TOOL DEPTH
PRES. MAX MINIMUM
MEAS. LINE SHOE JOINT
CEMENT LEFT IN CSG. All
PERFS.
DISPLACEMENT fresh H2o
EQUIPMENT

PUMP TRUCK CEMENTER Kevin Eddy
398 HELPER Dan Casper
BULK TRUCK
810/170 DRIVER Kevin Weighous
BULK TRUCK
DRIVER

OWNER
CEMENT
AMOUNT ORDERED 210 SXS 60/40 4% Gel

COMMON @
POZMIX @
GEL @
CHLORIDE @
ASC @
210 Sx 60/40 + 4% @ 18.92 3,973.20
Disc 20% 794.64

Service
HANDLING 222.63 @ 2.48 550.63
MILEAGE 9.39 x 29 x 2.75 748.85

REMARKS:

on location - held safety meeting - Rig up
Rig RATS 4 1/2 Drill pipe - Load Hole w/ Rig
 Mud. #1 - 3925 - 50 SXS
#2 - 1200 ft - 50 SXS
#3 - 480 ft - 40 SXS
#4 - 205 ft - 20 SXS
Rat Hole @ 30 SXS mouse Hole @ 20 SXS
Rig Down

DEPTH OF JOB 3925
PUMP TRUCK CHARGE 2600.87
EXTRA FOOTAGE @
MILEAGE Hum 29 @ 7.70 223.30
MANIFOLD @
Hum 29 @ 4.40 127.60

CHARGE TO: Ritchie Exploration
STREET _____
CITY _____ STATE _____ ZIP _____

TOTAL 4,250.85
Disc 20% 850.17

PLUG & FLOAT EQUIPMENT

@ _____

@ _____

@ _____

@ _____

TOTAL 0
Disc 0%

To: Allied Oil & Gas Services, LLC.
You are hereby requested to rent cementing equipment and furnish cementer and helper(s) to assist owner or contractor to do work as is listed. The above work was done to satisfaction and supervision of owner agent or contractor. I have read and understand the "GENERAL TERMS AND CONDITIONS" listed on the reverse side.

PRINTED NAME William Sanders
SIGNATURE William Sanders

SALES TAX (If Any) _____
TOTAL CHARGES 8,224.05
DISCOUNT 20% 1,644.81 (60/20/0)
IF PAID IN 30 DAYS
6,579.24

ALLIED OIL & GAS SERVICES, LLC 063686

Federal Tax I.D. # 20-8651475

REMIT TO P.O. BOX 93999
SOUTHLAKE, TEXAS 76092

SERVICE POINT:
G-cat Bind us

DATE 10-16-19	SEC. 1	TWP. 21	RANGE 18 W	CALLED OUT	ON LOCATION 10:30 AM	JOB START 2:30 PM	JOB FINISH 3:30 PM
LEASE Weisensee	WELL# (B-1)		LOCATION Pawnee Rock west side		COUNTY Pawnee	STATE KS	
OLD OR NEW (Circle one)			west on T RD To 200 RD 1/4 south				

CONTRACTOR Southwind Ris 2. OWNER Ritchie.

TYPE OF JOB Surface		CEMENT	
HOLE SIZE	T.D. 1174	AMOUNT ORDERED 4000x 65/35 + 6% G + 3% C	
CASING SIZE	DEPTH 1177	150 3x class A + 3% C + 2% G	
TUBING SIZE	DEPTH		
DRILL PIPE	DEPTH		
TOOL	DEPTH		
PRES. MAX	MINIMUM	COMMON 150 @ 17.90	2,685.00
MEAS. LINE	SHOE JOINT 29	POZMIX @	
CEMENT LEFT IN CSG. 29		GEL 282 @ .50	141.00
PERFS.		CHLORIDE 1467 @ 1.10	1,613.70
DISPLACEMENT 73.50		ASC @	
		4000x 65/35 + 6%	@ 19.88 7,952.00

EQUIPMENT

PUMP TRUCK CEMENTER Wayne Davis
366 HELPER Josh Isaac
BULK TRUCK Kevin Eddy
871/117 DRIVER Matthew Spangenberg
BULK TRUCK
609/239 DRIVER Brian Lang

Materials Total		12,391.25
Disc. 20%		2,478.34
Service		
HANDLING 615.51 @ 2.48		1,526.76
MILEAGE 26.37 x 29 @ 2.75		2,163.01

REMARKS:

Pipe on Bottom Break circulation
with Ris mud Drop Ball
Pump Ball Thru. Run 5 BBHs
Water Ahead. Mix 4000x 65/35 + 6% G
+ 3% C Mix 150 3x class A + 3% C + 2% G
Release Plug. Dis 73.50 BBHs fresh
water. hand plug at PD.
Release and hold

DEPTH OF JOB	1177	
PUMP TRUCK CHARGE	2058.75	
EXTRA FOOTAGE	@	
MILEAGE Hum 29 @ 7.70		223.30
MANIFOLD @ 275.00		275.00
Hum 29 @ 4.40		127.60

CHARGE TO: Ritchie Exploration
STREET _____
CITY _____ STATE _____ ZIP _____

TOTAL 6,314.12
Disc 20% 1,262.82

PLUG & FLOAT EQUIPMENT

Atu Inocent @ 447.00	447.00
Rubber Plug @ 131.00	131.00
Covers @ 75.00	75.00
@	
@	

TOTAL 653.00
Disc 20% 130.60

To: Allied Oil & Gas Services, LLC.
You are hereby requested to rent cementing equipment and furnish cementer and helper(s) to assist owner or contractor to do work as is listed. The above work was done to satisfaction and supervision of owner agent or contractor. I have read and understand the "GENERAL TERMS AND CONDITIONS" listed on the reverse side.

SALES TAX (If Any) _____
TOTAL CHARGES 19,358.82
DISCOUNT 3,871.25 (20/20/20) IF PAID IN 30 DAYS
15,487.06

PRINTED NAME William Sanders

SIGNATURE *William Sanders*