

CLIFTON (CINF) OTTAWAY  
CONSULTING GEOLOGIST  
PO Box 494 Hays, Ks 67601  
785-628-6900  
785-623-1598 cell

Scale 1:240 (5"=100') Imperial  
Measured Depth Log

Well Name: #1 McRae TX Trust

Well Id:

Location: NW SW NW SW Sec. 22-19-36

License Number: 15-203-20295-00-00

Spud Date: 10-18-14

Surface Coordinates: 1921' FSL & 130' FWL

Region: Wichita, County  
Drilling Completed: 10-27-14

Bottom Hole

Coordinates:

Ground Elevation (ft): 3252.5

Logged Interval (ft): 2600

Formation:

Type of Drilling Fluid:

Chemical  
Printed by WellSight Log Viewer from WellSight Systems 1-800-447-1534 www.WellSight.com

K.B. Elevation (ft): 3263

To: 5022 Total Depth (ft): 5022

Council Grove to Mississippi

OPERATOR

Company: Raymond Oil Co. Inc.  
Address: PO Box 48788  
Wichita Ks 67201

GEOLOGIST

Name: Clifton (Cliff) Ottaway  
Company:  
Address: 211 E. 32nd St.  
Hays, Ks. 67601

Formation Tops

Formation	Sample	Log	Sub sea	Well A	Well B
Anhydrite	2299		+964	-3	+102
B/Anhy	3485		-222	+3	+117
Stotler	3890	3889	-626	-634	-748
Heebner	3937	3938	-675	-679	-799
Lansing-KC	4397	4368	-1134	-1136	-1265
Base-KC	4424	4404	-1141	-1171	-1303
Marmaton	4498	4488	-1225	-1246	-1399
Pawnee	4540	4524	-1261	-1286	-1435
Myrick Station					

FT SCOTT	4338	4340	-1211	-1302	-1431
Cherokee	4588	4570	-1307	-1333	-1483
Johnson Zone	4638	4612	-1349	-1386	-1529
Marrow Shale	4767	4742	-1479	-1506	-1678
Mississippi	4903	4862	-1599	-1632	-1897
RTD	5022		-1759		
LDT	5024		-1761		

WELL "A" Woolsey Pet Shimanek #1 Sec 28-19-36  
 WELL "B" Helmerick & Payne #1-27 Sec 27-19-36

DSTS

- DST No 1 4176-4201
- DST No. 2 4391-4443
- DST No. 3 4530-4554
- DST No. 4 4839-4880

Comments

8 5/8" Set @ 265' w 180 sks  
 D&A @ 5022'

Based on Drill Stem Test results, lack of show and logs, it was decided to plug and abandon this test hole.

Strap 4202.35  
 Board 4202.29  
 Dif. .06

ROCK TYPES

	Anhy		Clyst		Gyp		Mrst		Shgy
	Bent		Coal		Igne		Salt		Sltst
	Brec		Congl		Lmst		Shale		Ss



Cht      Dol      Meta      Shcol      Till

**MINERAL**

Anhy  
 Arggrn  
 Arg  
 Bent  
 Bit  
 Breccfrag  
 Calc  
 Carb  
 Chtdk  
 Chtit  
 Dol  
 Feldspar  
 Ferrpel  
 Ferr  
 Glau

Gyp  
 Hyvmin  
 Kaol  
 Marl  
 Minxl  
 Nodule  
 Phos  
 Pyr  
 Salt  
 Sandy  
 Silt  
 Sil  
 Sulphur  
 Tuff

**FOSSIL**

Algae  
 Amph  
 Belm  
 Bioclst  
 Brach  
 Bryozoa  
 Cephal  
 Coral  
 Crin  
 Echin  
 Fish  
 Foram  
 Fossil  
 Gastro  
 Oolite

Ostra  
 Pelec  
 Pellet  
 Pisolite  
 Plant  
 Strom

**TEXTURE**

Boundst  
 Chalky  
 Cryxin  
 Earthy  
 Finexin  
 Grainst  
 Lithogr  
 Microxin  
 Mudst  
 Packst  
 Wackest

**STRINGER**

Anhy  
 Arg  
 Bent  
 Coal  
 Dol  
 Gyp  
 Ls  
 Mrst

**OTHER SYMBOLS**

**POROSITY**

Earthy  
 Fenest  
 Fracture

Vuggy  
 Well

**ROUNDING**

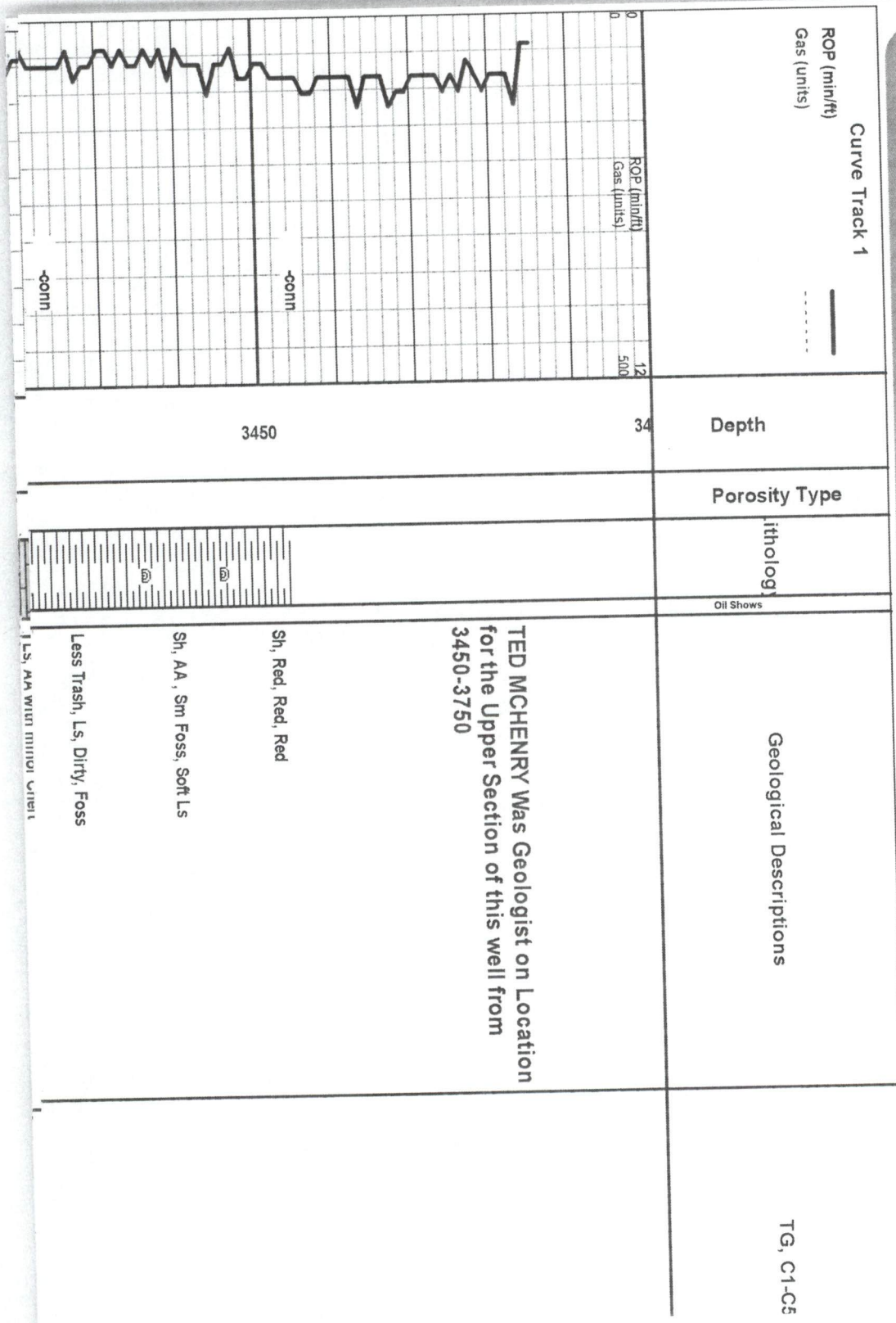
Rounded  
 Subrnd  
 Subang

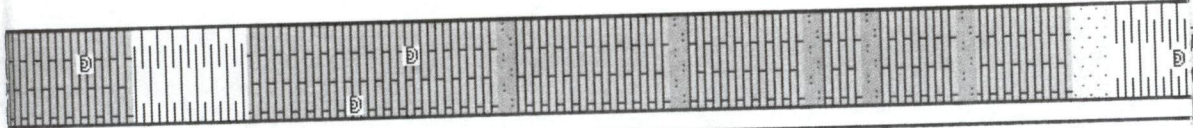
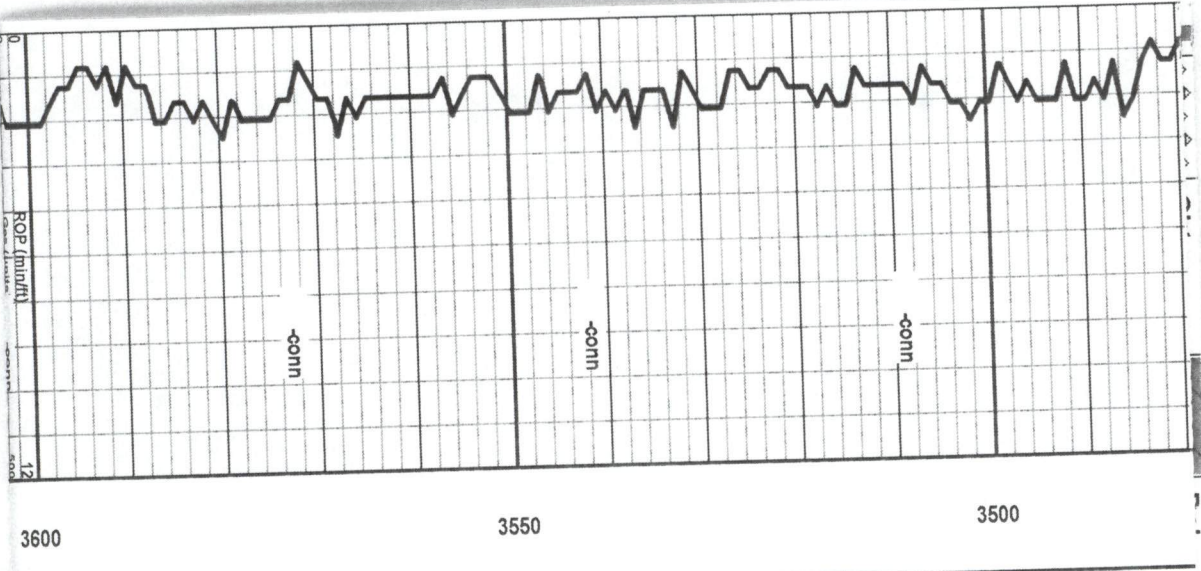
Spotted  
 Ques  
 Dead

**EVENT**

Rft  
 Sidewall

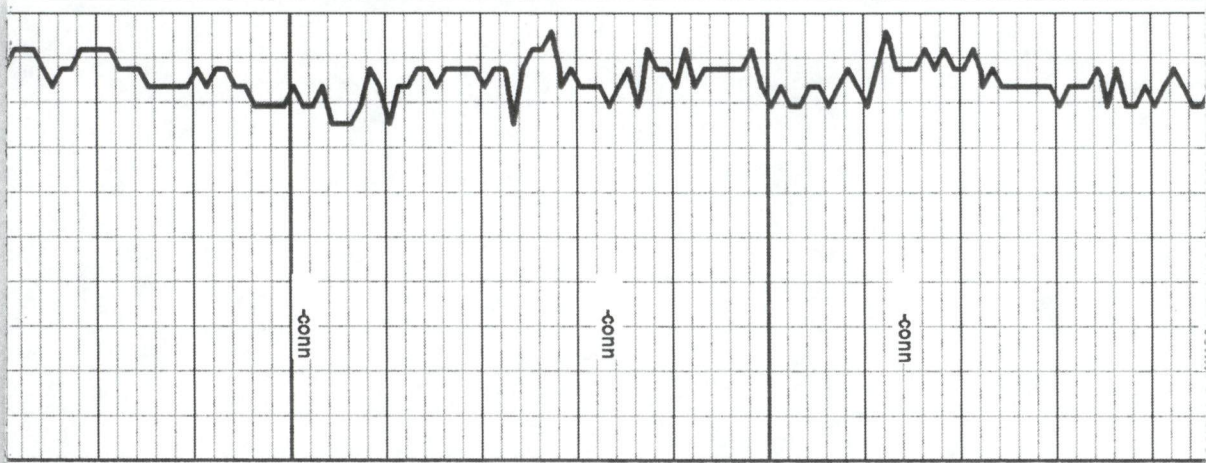
MOLDIC  
 ORGANIC  
 PINPOINT  
 MUCRINE  
 POOR  
 OIL SHOW  
 EVEN  
 CORE  
 DST





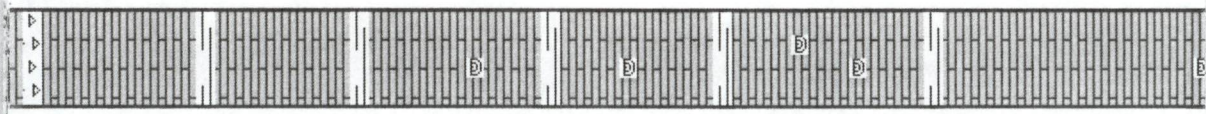
- SS, Fine grn, Gd Clusters, Dk Min Inclusions, Fresh Chert, Sub Rd, Angular, No Show
- SS, Dirty, Sub Rd, Dk min, Gry Sh
- SS, Wh, Fn Grnd, Sub Rd, Friable, rare gas bubble
- Ls, Wh-Crm, Sl Sandy
- SS, Wh, Fn Grnd, Dk Min, 1 Piece with Dk Asphaltic St
- Ls, Crm Chalky, Soft
- Ls, Crm, Soft, Some Sand
- Ls, AA, Foss, Dk Gry sh
- Ls, Crm, sl Foss, Dk Gry sh
- Sh, Red Bed
- Ls, Crm, Sl Foss
- Ls, Gry Sl Foss, Silty Gry Sh





3700

3650



AA

AA

AA With W/h Chert, W/h Ls Chalky

Ls, Gry, Foss, Chalky, W/h Ls

Ls, Dk Gry, Foss

AA

Ls, Dk Gry, Foss, Gry Silty Sh

AA with Crm Ls

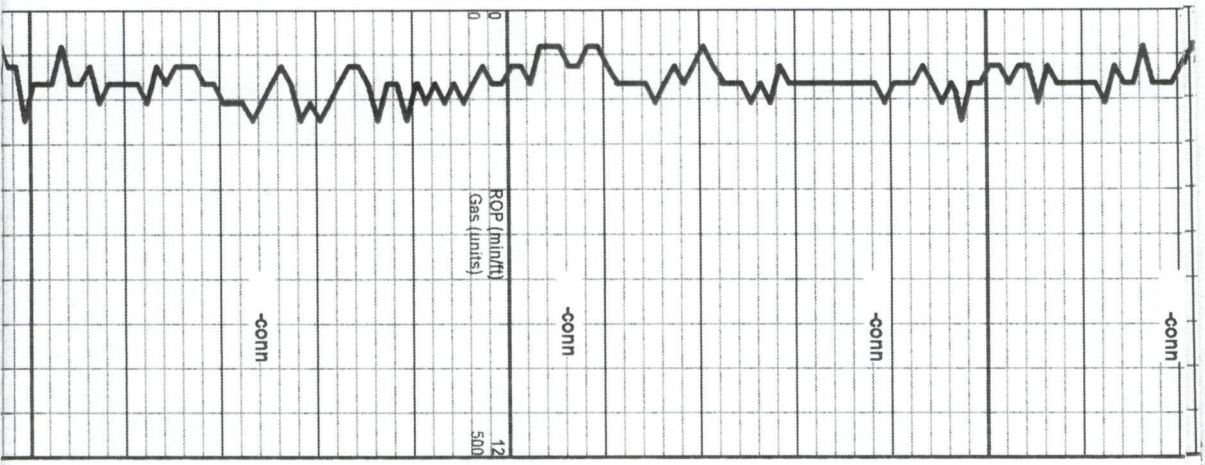
AA

Ls, Crm, Foss

Ls, AA with Gry Sh

Ls, AA

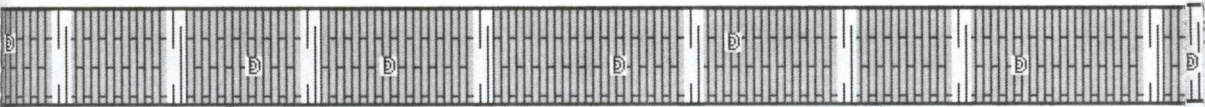
Ls, AA with minor Chert



3850

3800

3750



Ls, AA

Ls, Crm-Brn, Foss, soft Gry Sh

Ls, Crm Chalky

Ls, AA, some Pyrite

Ls, Crm, Sl Foss, Gry Sh

Ls, AA

Ls, AA, Blk Sh

AA

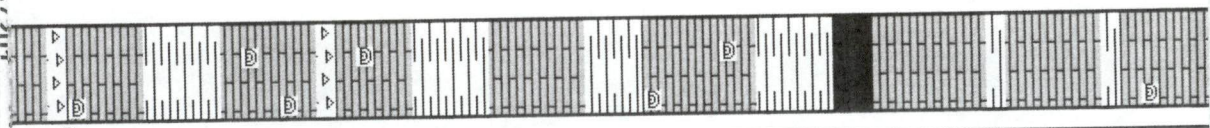
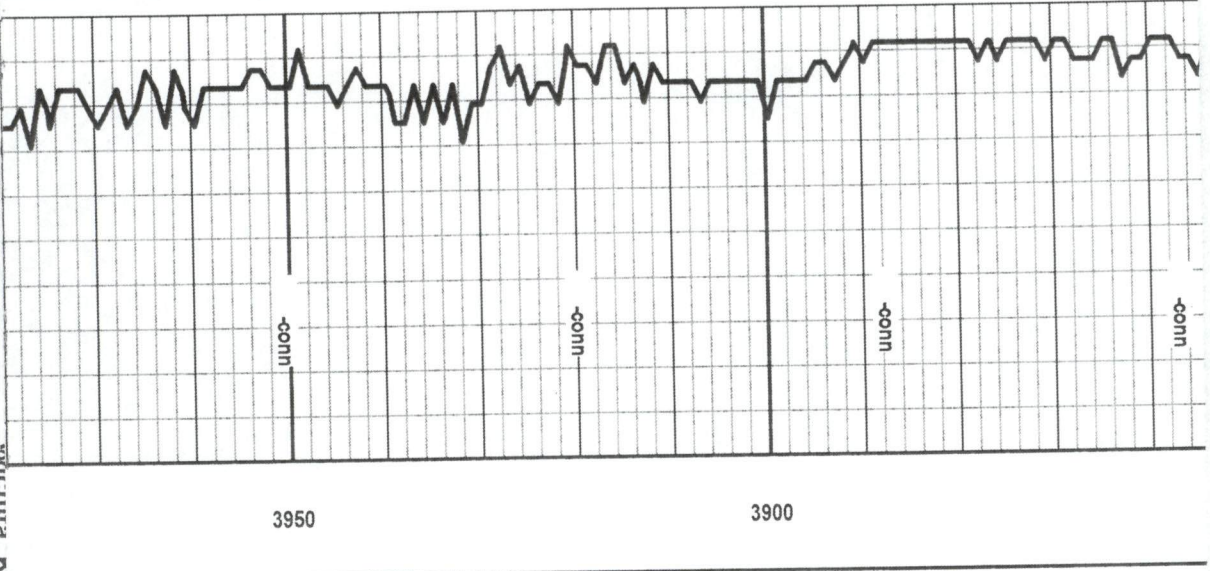
Ls, Crm, Sl Foss, Gry Sh

Ls, Crm, Foss, Pellets, Gry Sh

Ls, Brn-Crm, Foss

Ls, Brn-Lt Gry, Foss, Fln, Dense No show





Ls, Gry, fXln, Foss, Dense, No show

Ls, AA, Sl Chalky

AA

**HEEBNER 3890 (-627)**  
Blk Carb, Silty

Ls, Tan-Gry, Foss, Fxln, No show Red, Brn Sh

**TORONTO 3912 (-649)**  
Ls, Tan, Fxln, Sl Cherty, Sl Chalky

**LANSING-KC. 3937 (-674)**

Ls, Wh-Orfw, Fxln, Foss, Dense, sl Cherty, Oolite, No Show

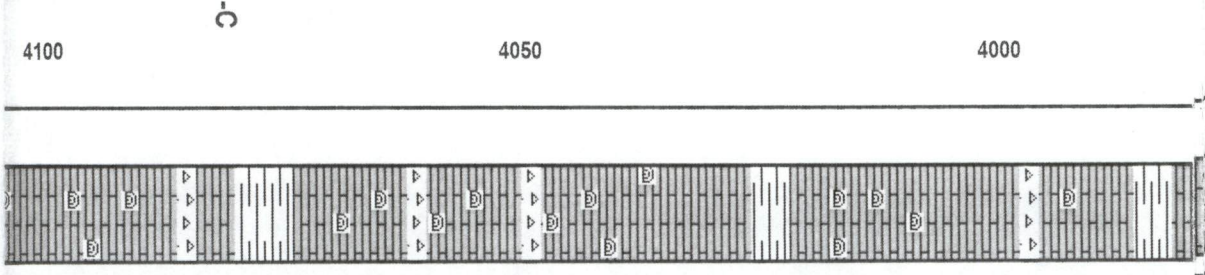
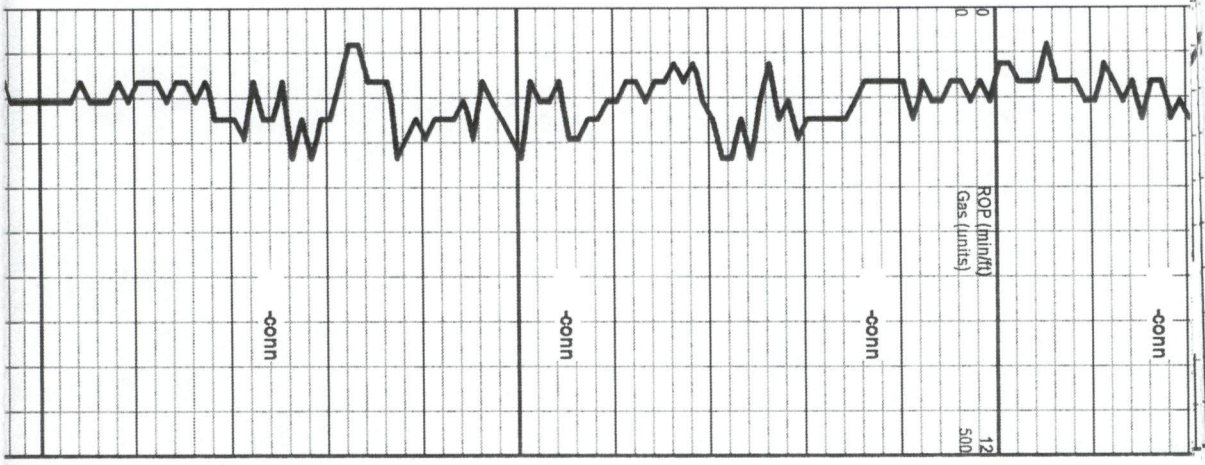
Ls, AA

Ls, Wh-Tan, Fxln, Foss, Sl Cherty, Chalky, T-Dk Asphaltic residue, St, No Order, InterXln Pos.

Ls, Wh-Orfw, Fxln, Foss, Oolite, Chalky, Sl Cherty, No show

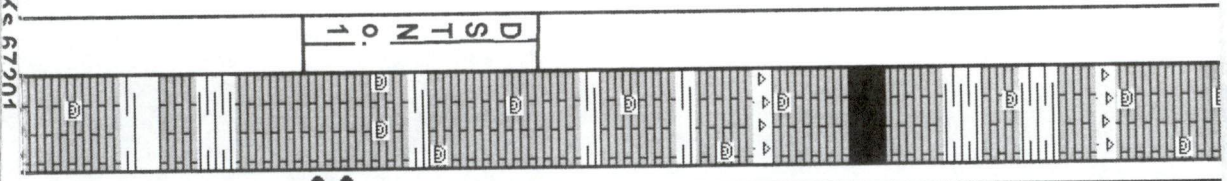
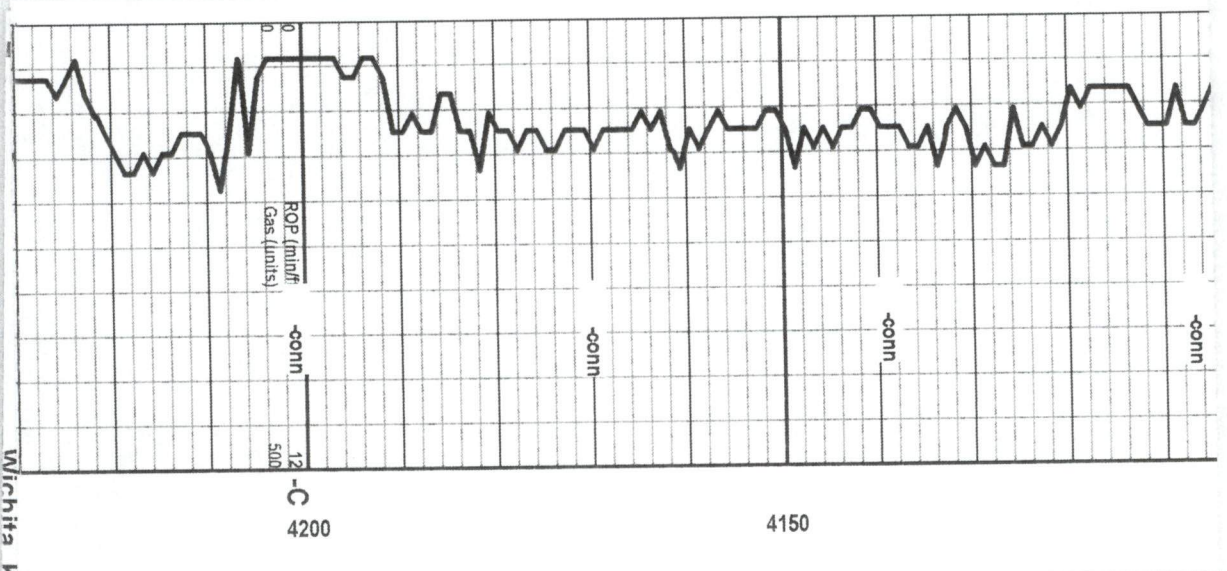
VIS: 52  
WT: 8.8  
LCM # 7

VIS: 49  
WT: 8.9  
LCM # 7



Ls, AA  
 Ls, Wh-Lt Gry, Fxln, Foss, Oolite, Sl Chalky, Tight  
 Ls, AA  
 Ls, Wh-Crm, Fxln, Foss, Oolite, Sl Chalky, Pyrite, Sl cherty, No Show  
 Ls, Wh-Tan, F-Mxln, Foss, sl Chalky, Oolite, Sl Cherty, No Show  
 Ls, Wh-Offwh, Fxln, Foss, Oolite, Sl Dolomite, Sl Chalky, Pyrite, No show  
 Ls, AA  
 Ls, Wh-Crm, Mxln, Foss, Oolite, Chalky-Firm, Sl Pyrite  
 Ls, AA

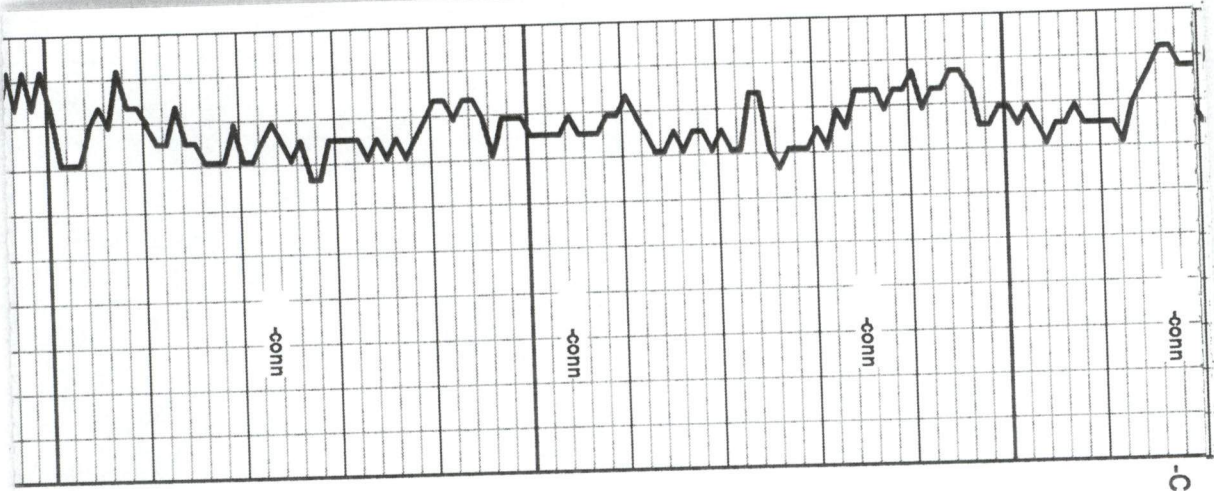
VIS: 58  
 WT: 8.8  
 LCM # 7



Ls, Wh-Lt Gry, Fxln-Microxln, Foss, Chalky, Sl Cherty No Show  
 Ls, Crm-Drk Gry, Fxln, Dense, Cherty, Foss, Chalky, No Show  
 Sh, Blk Carb, Gry  
 Ls, Wh-Tan, Fxln, Foss, Cherty, Chalky, No Show  
 Ls, AA  
 Ls, Wh-Offwh, Fxln, Foss, Sl, chalky  
 Ls, Wh-Offwh, Fxln, Foss, Oolite, Ooc, Sl, Chalky, Fo, St,  
 Ls, AA  
 Sh, Brn Gry, Blk  
 Ls, Wh-Offwh, Fxln, Chalky No Show  
 Ls, offwh-Tan, Fxln, Foss, Sl oolite, ooc, sl Chalky, T-FO, Dk St,

7:00 am 10-22-14 T  
 4201'  
 Vis: 56  
 Wt: 9.0  
 LCM # 7  
 DST NO. 1 4176-42  
 30-60-45-90  
 IO: BOB in 13 min  
 ISI: No Blow  
 FO: BOB in 16 min  
 FSI: No Blow  
 REC: 731' MW  
 IFP: 16-223  
 FFP: 227-382  
 ISIP: 1104  
 ECID: 1109





Vft Order, Interxln-ppv Pos

Ls, Tan-Lt Gry, Fxln, Dense, Foss, Chalky-Firm, No show

Ls, AA

Ls, Tan-Dk Brn, Fxln, Dense, Foss, Chalky, No Show

Ls, AA Cherty, No Show

Ls, AA

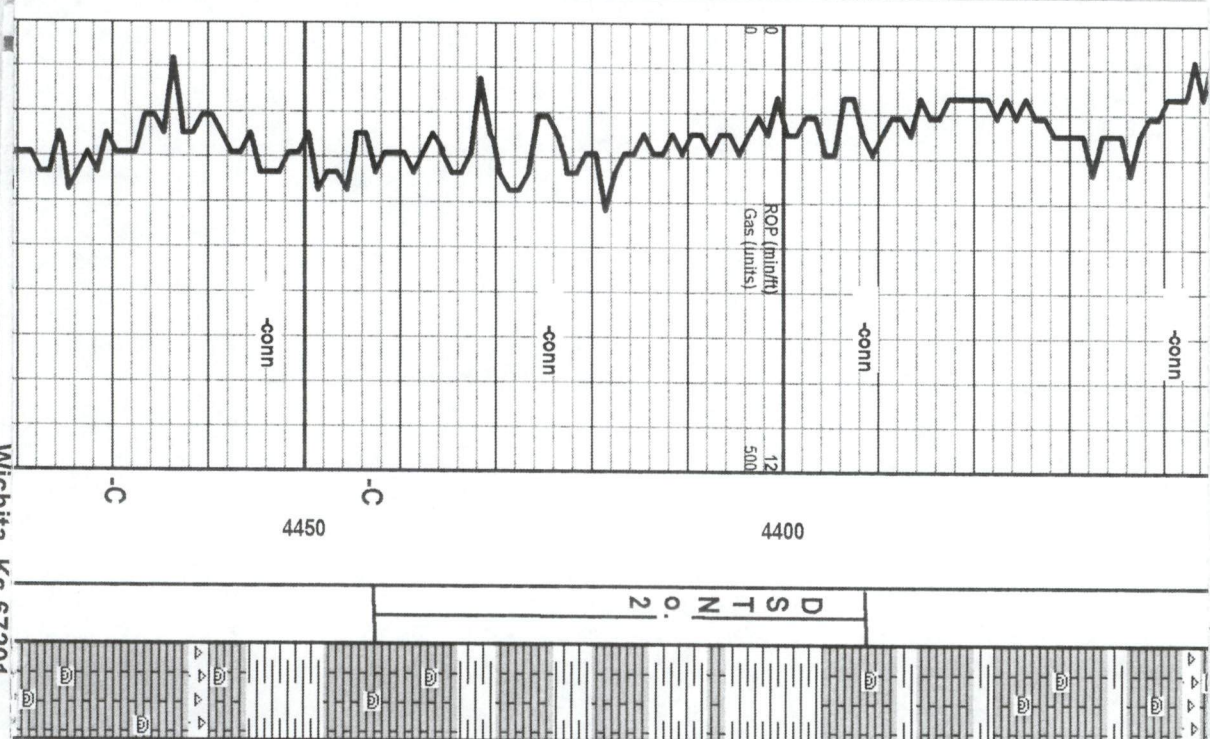
Ls, Tan-Gry, Fxln, Dense, Sl Cherty, Chalky, No Show

Sh, Brn Blk, Gry

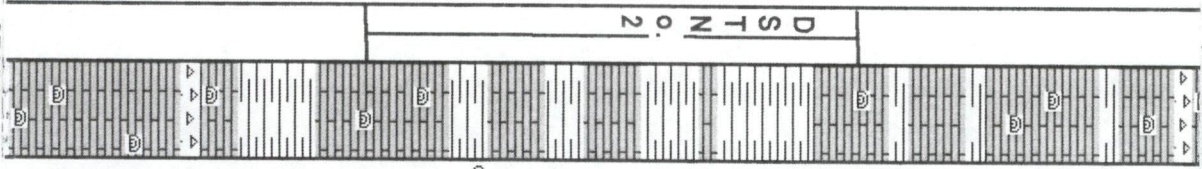
Ls, Tan-Gry, Fxln-Microxln, Oolite, Cherty, sl Chalky, No show

1011, 1102

7:00 am 10-23-14  
 Drig@4325'  
 Vis: 50  
 Wt: 8.9  
 LCM # 7



Wichita Ke 67901



Ls, Brn, Fxln, Dolic, foss, Pyrite, sl Cherty, No show

Ls, AA, sl, chalky, oolitic No Show

Sh, Brn, Red, Gry, Sandy, silty

**BKC-4396 (-1133)**

Ls, Tan-Gry, oolitic, Dense, F-Mxln, Foss, Sl Chalky No Show

Ls, Tan-Gry, Fxln, Foss, Chalky-Firm No Show, Sh, Gry, brn

**MARMATON 4424 (-1161)**

Ls, Offwh-Tan, Fxln, Foss, oolitic, ooc, T-FO, Sl, Ft Order, gas, Interxln-Vuggy Pos.

Ls, Tan-Gry, fxln, Dense, Sl Chalky

Ls, Tan-Gry, Fxln, Foss, No show

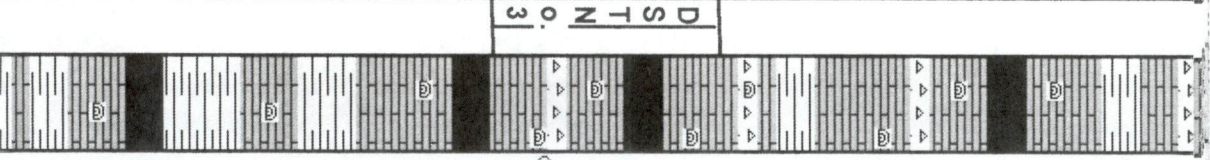
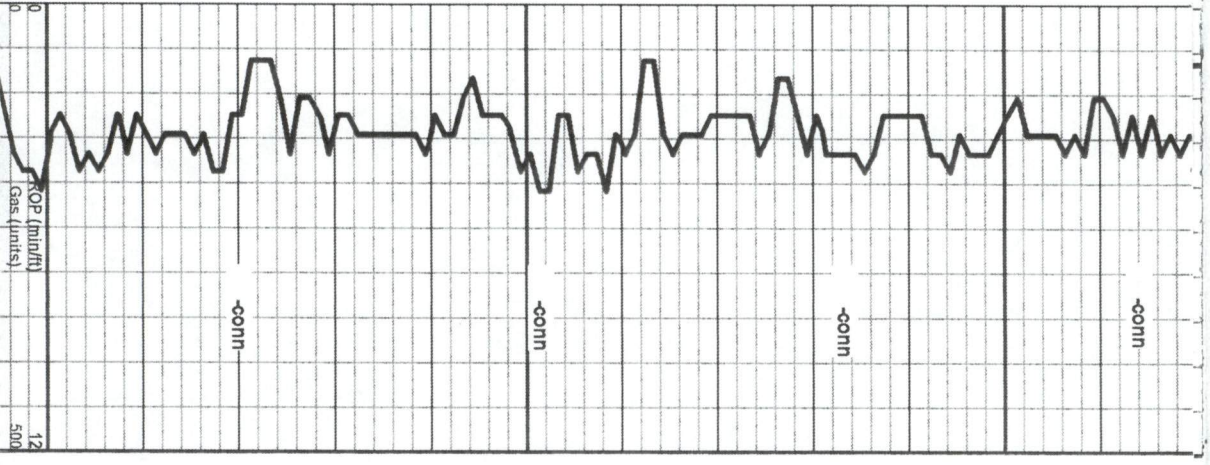
Sh, Blk, Gry, Brn

Ls, AA, Foss, Mottled, Tite, Sl Chalky, Cherty, Sh, Brn, Red, Blk

Ls, Tan-Drk Gry, Fxln, Dense, Cherty

Sh, Gry, Brn

DST NO. 2 4391-444:  
 30-60-45-90  
 1st Open: No Blow  
 2nd Open : No Blow  
 Rec: 5' Mud With Oil  
 tool  
 IF: 12-17  
 FF: 14-15  
 ISIP: 376  
 FSIP: 268



Ls, AA, Mottled, Tite, Sl Pyritic

**PAWNEE 4498(-1225)**  
Sh, Blk Carb

Ls, Tan-Gry, Fxln, Dense, Sl Cherty No show

Sh, Brn, Red, Gry

Ls, Tan-Lt Gry, Fxln, Foss, Dense, Cherty, No show

Sh, Blk Carb silty, blocky  
**MYRICK STATION 4540 (-1277)**

Ls, Tan-Gry, Dense, Crm-Tan, Fxln, sl oolite, Foss, TFO, St, No Order, Interxln-Ooc Pos, Sl Cherty, 2-3 Pieces in Tray

Sh, Blk Carb  
**FORT SCOTT 4558 (-1285)**

Ls, Tan, F-MXln, Foss, Dolite, Oolite, No show, sh, Red, Brn,

Ls, Crm-Tan, Fxln, Oolite, Mottled, Chalky-Firm, No Show

**CHEROKEE 4588 (-1325)**  
Sh, Blk Carb

Ls, Tan-Dk Gry, Fxln, Tlght, Sl Cherty, No show,

Sh, Blk, Gry, silty

7:00 am 10-24-14 Dri

Vis: 58  
Wt: 9.1  
LCM # 6

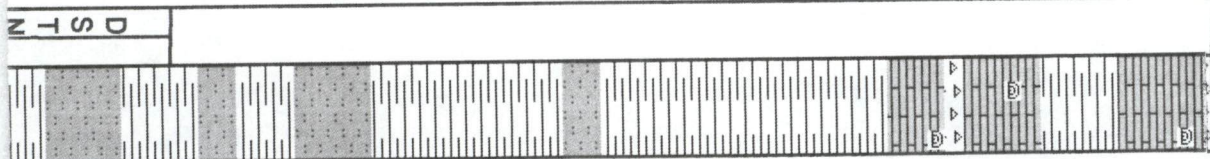
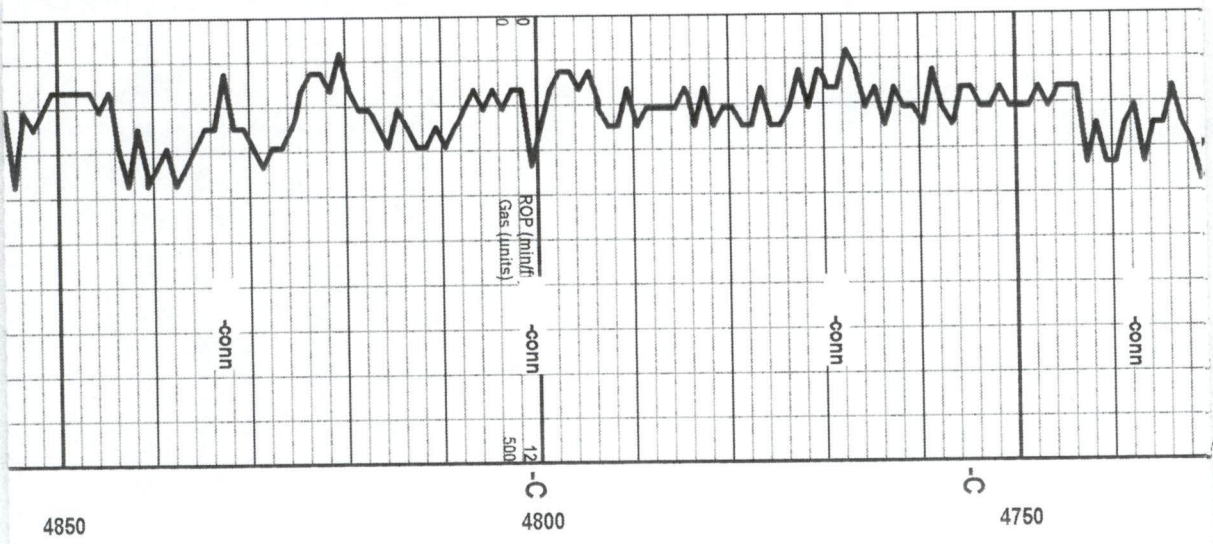
Vis:57  
Wt: 9.1  
LCM # 6

DST NO. 3 4530-45  
30-60-45-90  
Rec:167' HWM  
1st Open 3/4" in 30  
2nd Open No Blow  
If: 10-44  
Ft: 43-84  
ISIP: 1123  
FSIP: 1072

Vis:57  
Wt: 9.1  
LCM #6  
7:00 am 10-25-14 Dri  
Vis: 57







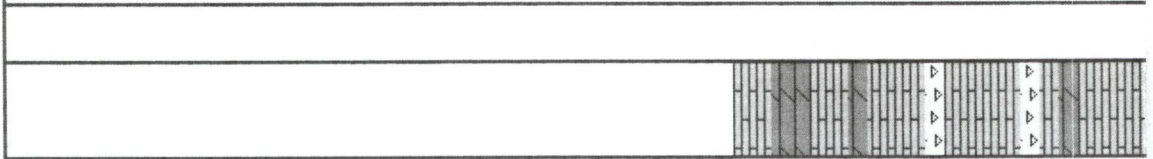
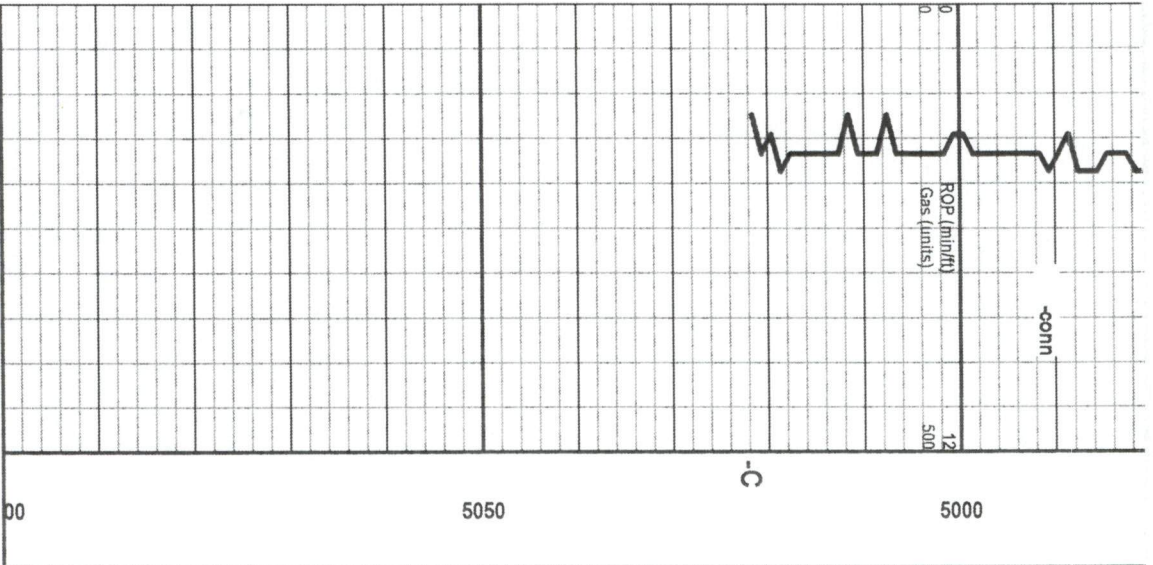
Is, Tan-tt Gry, F-MXln, Foss, No show, Sh, Red, Brn, Gry  
 Ls, Crm-Tan, Fxln, foss, tight, Sl chalky No show, Sh, Brn, Gry, Grn,  
 Ls, AA, Sh, Red, Gry, Brn, Silty  
 Ls, Crm-tt Gry, Fxln, Foss, cherty, No Show  
**MARROW SHALE 4767 (-1504)**  
 Sh, Blk, Gry, Brn, Grn, silty,  
 Ls, Crm-Tan, Fxln, Sh, Blk, Gry, Grn, T-Sst, clear-frosted, Sub  
 Angular, M-gr, Well Cemented, No /show  
 Sh, Blk, Brn, Gry, grn, silty, Pyritic, No show  
 SSt, Clear, Frosted, Mgr, Sub Ang, Well cemented Clusters, Sl  
 Pyritic, No Show  
 Sh, Brn, Grn, blk  
 Ls, Crm, F-MXln, foss, Gloo, Oolic, Sl Chalky, Pyrite, Sh, Gry,  
 Brn, Grn, blk  
 Ls, AA, Sh Grn, Gry, silty  
 Ls, Tan-Crm, Fxln, Foss, Mottled, Sl Chalky, Sh, Gry, Brn, Grn,  
 No show  
 AA, Pyritic, Sl Chalky, No show  
 Ls, Tan-Gry, Fxln, Dense, sl Chalky, Cherty, Foss, Sh, Grn, Gry,  
 Brn, SSt Clusters, Clear-frosted, well Sorted, No show  
 Sh, Grn, Gry, Blk, Silty, Pyritic

Vis: 58  
 Wt: 9.1  
 LCM # 6  
 Vis: 58  
 Wt: 9.1  
 LCM # 5  
 DST No. 4 4839-48  
 30-60-45-90  
 Rec: 368' HMM  
 1100' SW  
 4839-48 BOP in 48









Chalky-Firm, No show

Ls, AA, sl Dolic No show

Ls, Wh-Crm, F-Mxl, Dolic, Scrosic, sl Chalky, Foss, No show

AA

RTD 5022 (1759)

00 5050 5000