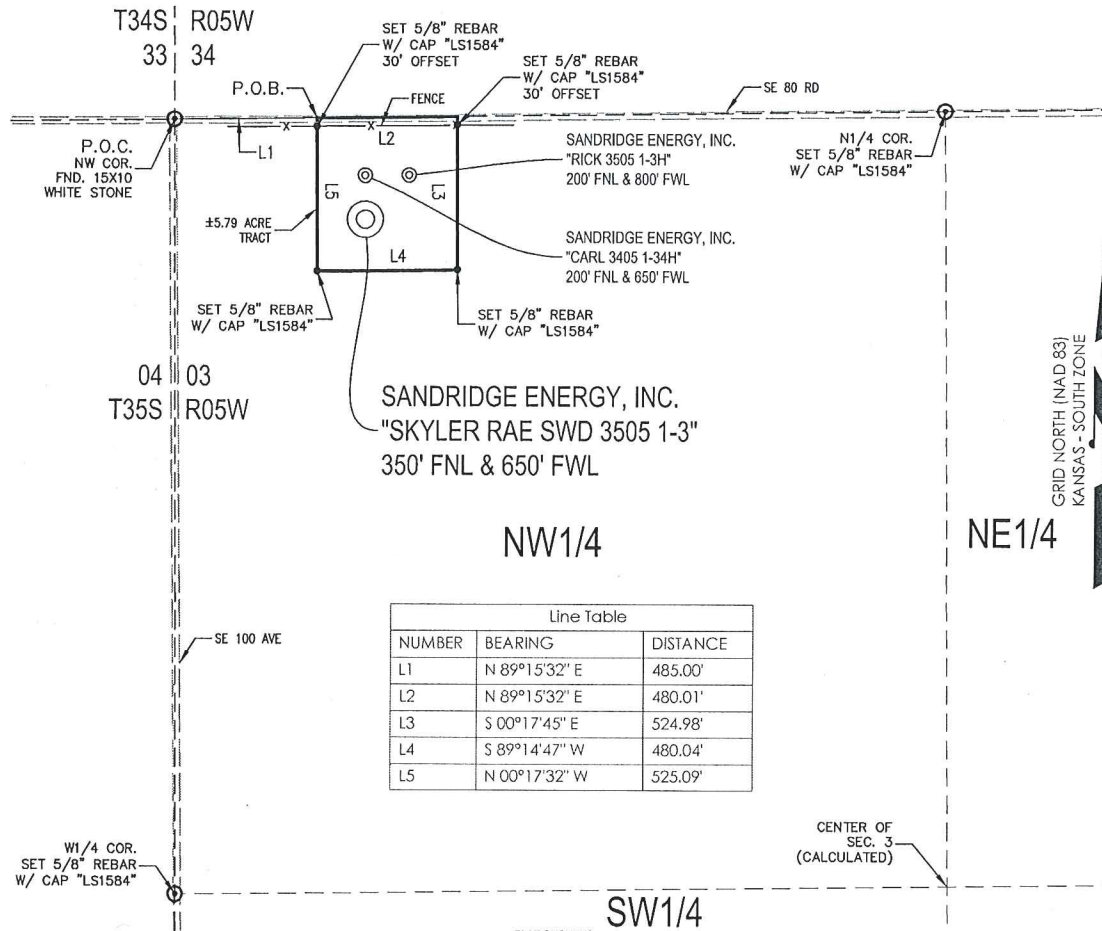




T 35 S - R 05 W



Line Table		
NUMBER	BEARING	DISTANCE
L1	N 89°15'32" E	485.00'
L2	N 89°15'32" E	480.01'
L3	S 00°17'45" E	524.98'
L4	S 89°14'47" W	480.04'
L5	N 00°17'32" W	525.09'



PLAT SHOWING
**5.79 ACRE TRACT OF LAND IN THE
 NW1/4 OF SECTION 3, T35S-R05W,
 HARPER COUNTY, KANSAS**

METES AND BOUNDS DESCRIPTION (5.79 ACRE TRACT)

PART OF THE NW1/4 OF SECTION 3, TOWNSHIP 35 SOUTH, RANGE 05 WEST, HARPER COUNTY, KANSAS, MORE PARTICULARLY DESCRIBED AS FOLLOWS:

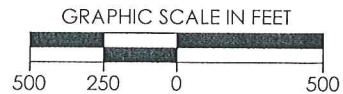
BEGINNING AT A FOUND 15X10 WHITE STONE AT THE NORTHWEST CORNER OF SAID SECTION 3;
 THENCE N 89°15'32" E ALONG THE NORTH LINE OF SAID SECTION 3, A DISTANCE OF 485.00 FEET TO A POINT, SAID POINT BEING THE POINT OF BEGINNING;
 THENCE CONTINUE N 89°15'32" E, ALONG THE NORTH LINE OF SAID SECTION 3, A DISTANCE OF 480.01 FEET TO A POINT;
 THENCE S 00°17'45" E, A DISTANCE OF 524.98 FEET TO A SET 5/8" REBAR WITH CAP MARKED "LS1584", PASSING THROUGH A SET 5/8" REBAR WITH CAP MARKED "LS1584", AT A DISTANCE OF 30.14 FEET;
 THENCE S 89°14'47" W, A DISTANCE OF 480.04 FEET TO A SET 5/8" REBAR WITH CAP MARKED "LS1584";
 THENCE N 00°17'32" W, A DISTANCE OF 525.09 FEET, PASSING THROUGH A SET 5/8" REBAR WITH CAP MARKED "LS1584", AT A DISTANCE OF 495.00 FEET TO THE POINT OF BEGINNING.

SAID TRACT CONTAINING 5.79 ACRES OF LAND AS SURVEYED, MORE OR LESS.

BASIS OF BEARINGS:
 KANSAS COORDINATE SYSTEM 1983 SOUTH ZONE
 BEARINGS: GRID
 DISTANCES: US SURVEY FOOT AT GRID
 COORDINATES: US SURVEY FOOT AT GRID

SURVEYOR'S CERTIFICATE:

I, JEREMY A. LAWSON, KANSAS LICENSED PROFESSIONAL LAND SURVEYOR, NO. 1584, DO HEREBY CERTIFY THAT THIS PLAT REPRESENTS THE RESULTS OF A SURVEY MADE ON THE GROUND UNDER MY SUPERVISION ON THE DATE OF 6-05-2014. NO EASEMENTS OR OTHER TITLE DOCUMENTS WERE PROVIDED TO THE SURVEYOR FOR THIS PROPERTY.



REVISION	SandRidge		
	"SKYLER RAE SWD 3505 1-3" PART OF THE NW1/4 OF SECTION 3, T-35-S, R-05-W PROPOSED DRILL SITE HARPER COUNTY, KANSAS		
	SCALE: 1" = 500'	PLOT DATE: 06-06-2014	DRAWN BY: MF
			SHEET NO.: 1 OF 1