

**Falcon Exploration, Inc.  
Vada Unruh No. 1-25(SE)  
2520' FNL and 1110' FEL  
NW NW NE SE  
Sec 25 T28S R31W  
Haskell County, Kansas**

Geological Report  
by

Macklin M. Armstrong, P.G.  
License Number 743

Scale 1:240 Imperial

Well Name:	Vada Unruh No. 1-25(SE)		
Surface Location:	Sec 25 T28S R31W		
Bottom Location:	2520' FNL and 1110' FEL		
API:	15-081-22083		
License Number:	5316		
Spud Date:	10/1/2014	Time:	5:00 PM
Region:	Haskell County, Kansas		
Drilling Completed:	10/10/2014	Time:	5:12 AM
Surface Coordinates:			
Bottom Hole Coordinates:			
Ground Elevation:	2812.00ft		
K.B. Elevation:	2822.00ft		
Logged Interval:	2600.00ft	To:	5534.00ft
Total Depth:	5530.00ft		
Formation:	Mississippi		
Drilling Fluid Type:	Chemical/Fresh Water Gel		

**OPERATOR**

Company:	Falcon Exploration, Inc.		
Address:	125 North Market Wichita, Kansas 67202		
Contact Geologist:	Dan Fredlund		
Contact Phone Nbr:	316-262-1378		
Well Name:	Vada Unruh No. 1-25(SE)		
Location:	Sec 25 T28S R31W	API:	15-081-22083
Pool:	Oil, Gas	Field:	Unnamed
State:	Kansas	Country:	Haskell

**CONTRACTOR**

Contractor: Val Energy, Inc.  
 Rig #: 2  
 Rig Type: mud rotary  
 Spud Date: 10/1/2014  
 TD Date: 10/10/2014  
 Rig Release: 10/12/2014

Time: 5:00 PM  
 Time: 5:12 AM  
 Time: 8:15 PM

**ELEVATIONS**

K.B. Elevation: 2822.00ft  
 K.B. to Ground: 10.00ft

Ground Elevation: 2812.00ft

**SURFACE CO-ORDINATES**

Well Type: Vertical  
 Longitude: 100.6558008  
 N/S Co-ord:  
 E/W Co-ord:

Latitude: 37.5835912

**NOTES**

Date	Depth	Activity
10-01-14	MIRU	Spud at 5:00 pm
10-02-14	830	Drilling
10-03-14	1850	Wiper Trip to CH
10-04-14	1850	TIH to Drill Plug
10-05-14	2721	Drilling
10-06-14	3984	Drilling
10-07-14	5030	Drilling
10-08-14	5160	TOH for DST No. 1
10-09-14	5300	Drilling
10-10-14	5530	ST to CH for Log
10-11-14	5530	TOH for DST No. 3
10-12-14	5530	P & A

Surface Casing: 8 5/8" 24# at 1846'  
 Production Casing: None set

Deviation: 505' - 3/4°  
 998' - 1°  
 1850' - 3/4°  
 5040' - 1/4°  
 5530' - 1°

Bit Record:	Size	Make	Type	Depth In	Depth Out	Hours
	12 1/4"	JZ	Rock Bit	Surface	1850	22 3/4
	7 7/8"	PDC Lodgic	PLt 516	1850	5040	60
	7 7/8"	JZ	HA30Q	5040	5530	42 1/2

**Drill Stem Tests:**

DST No. 1 5100 to 5160 Morrow Sand  
 5-90-30-90

Recovery: 15' Mud  
 IHP 2486 FHP 2486  
 IFP 8-8 FFP 8-14  
 ISIP 68 FSIP 28  
 Temp 123°

DST No. 2 5350 to 5375 (Straddle Test) Saint Louis  
 Misrun due to packer failure

DST No. 3 5344 to 5377 (Straddle Test) Saint Louis  
 Misrun due to packer failure

DST No. 4 5323 to 5530 Saint Louis  
 5-90-120-180  
 Recovery: 1415' Mud  
 IHP 2594 FHP 2560  
 IFP 728-736 FFP 736-780  
 ISIP 1909 FSIP 1522  
 Temp 127°

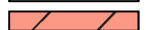
Formation	Sample	E-Log	Datum	Well 1	Well 2
Chase	2671	2667	+155	+4	+2
Winfield	2738	2734	+88	+5	+4
Towanda	2783	2781	+41	+11	+6
Fort Riley	2835	2834	-12	+10	+8
Cottonwood	3115	3117	-295	+3	+3
Neva	3157	3161	-339	+7	+1
Foracker	3272	3274	-452	+8	0
Root Shale	3496	3500	-678	+2	+2
Stotler	3514	3518	-695	+4	+3
Tarkio	3581	3586	-764	+2	-7
Topeka	3779	3785	-963	+6	+1
LeCompton	3974	3982	-1160	+10	+2
Heebner	4118	4127	-1305	+3	+1
Toronto	4138	4141	-1319	+8	+5
Douglas	4161	4171	-1349	-4	-4
Iatan	4214	4223	-1401	+5	+1
Lansing	4226	4235	-1413	+1	0
Muncie Creek	4446	4457	-1635	+2	+1
Stark	4609	4620	-1798	+4	-2
Swope	4621	4632	-1810	+4	-1
Marmaton	4739	4750	-1928	-2	+2
Pawnee	4829	4840	-2018	-6	0
Labette Shale	4857	4860	-2038	+6	+10
Cherokee Shale	4876	4887	-2065	-5	0
Lower Cherokee Shale	4916	4926	-2104	0	+2
Morrow Shale	5106	5104	-2282	+1	+4
Morrow Sand	5114	5112	-2290	+16	-5
Miss-Chester	5179	5177	-2355	-7	-2
Saint Gen	5262	5260	-2438	+2	+16
Saint Louis	5333	5326	-2504	-22	-26
Spergen	5462	5454	-2632	+6	+1
Total Depth	5530	5534	-2712		

Reference Well No. 1: Falcon Exploration, Inc. James Koehn No. 3-31(NW) S2 S2 N2 NW Sec 31 T28S R30W  
 Reference Well No. 2: Falcon Exploration, Inc. Jantz No. 2-30(SW) S2 NW SW SW Sec 30 T28S R30W

Due to the results of the Drill Stem Tests and the electric log calculations, it was decided to plug this test well.

Respectfully submitted,  
 Macklin M. Armstrong

### ROCK TYPES

 Clystgy	 Lmst fw<7	 shale, grn	 Carbon Sh	 Ss
 Dolsec	 Lmst fw>7	 shale, gry	 shale, red	

### ACCESSORIES

#### MINERAL

P Pyrite  
 • Sandy  
 △ Chert White

#### FOSSIL

◇ Brachiopod  
 ⊙ Crinoids  
 F Fossils < 20%  
 φ Oolite  
 ♂ Pellets  
 ⊕ Fossilinid

#### STRINGER

••• Siltstone

#### TEXTURE

C Chalky

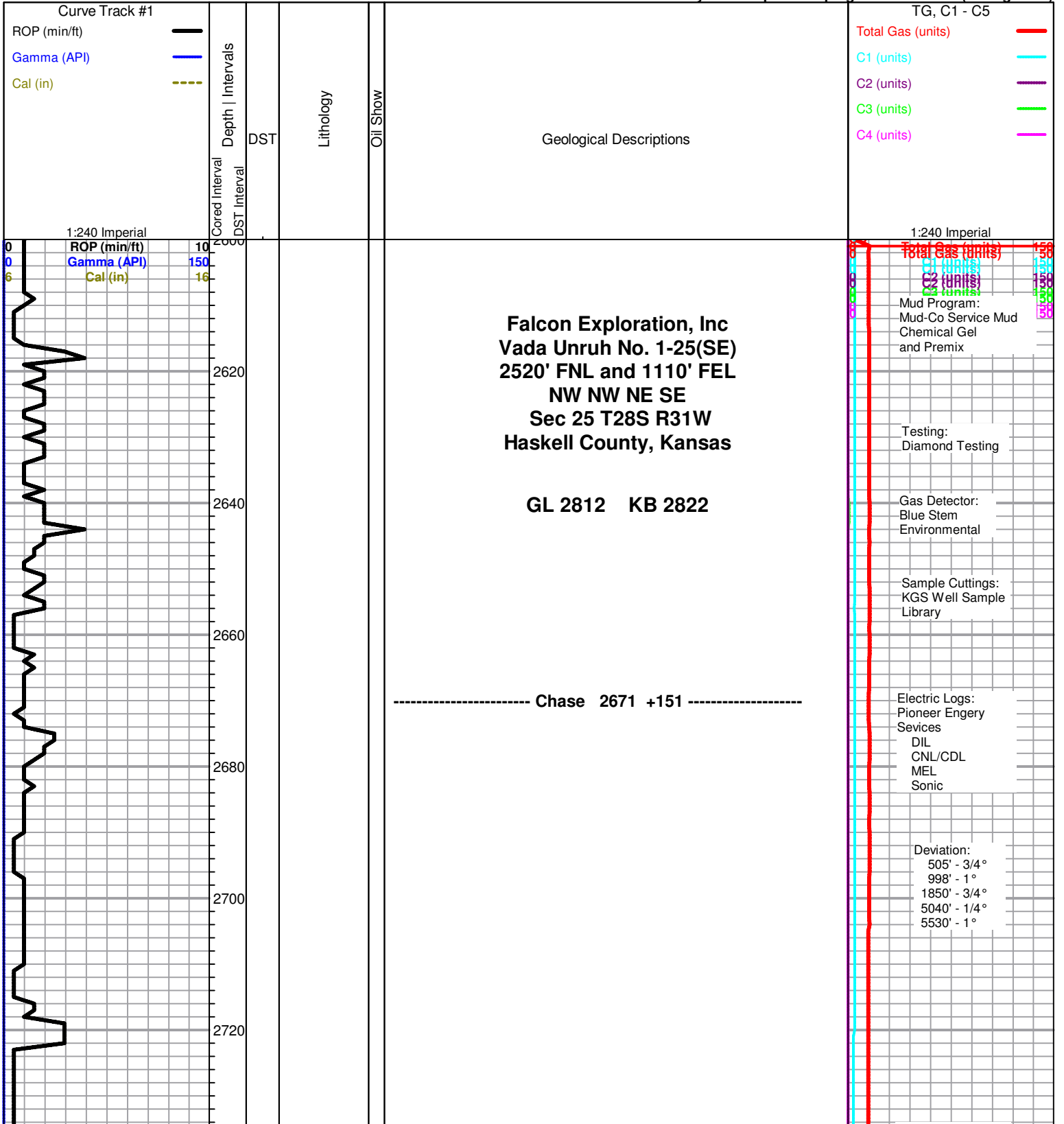
### OTHER SYMBOLS

MISC

DST

- MISC**
- Daily Report
  - Digital Photo
  - Document
  - Folder
  - Link
  - Vertical Log File
  - Horizontal Log File
  - Core Log File
  - Drill Cuttings Rpt

- DST**
- DST Int
  - DST alt
  - Core



2740  
2760  
2780  
2800  
2820  
2840  
2860  
2880  
2900  
2920  
2940

ROP (min/ft) 10  
Gamma (API) 150  
Cal (in) 16

----- Winfield 2738 +84 -----

----- Towanda 2783 +39 -----

----- Fort Riley 2835 -13 -----

All formation tops on this geological log have been correlated back to the electric log

Total Gas (units) 50  
C1 (units) 150  
C2 (units) 150  
C3 (units) 150  
C4 (units) 150

2960  
2980  
3000  
3020  
3040  
3060  
3080  
3100  
3120  
3140  
3160

ROP (min/ft) 10  
Gamma (API) 150  
Cal (in) 16

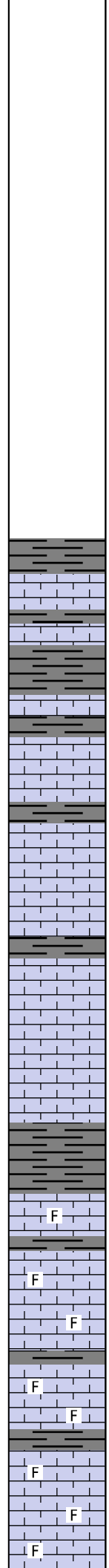
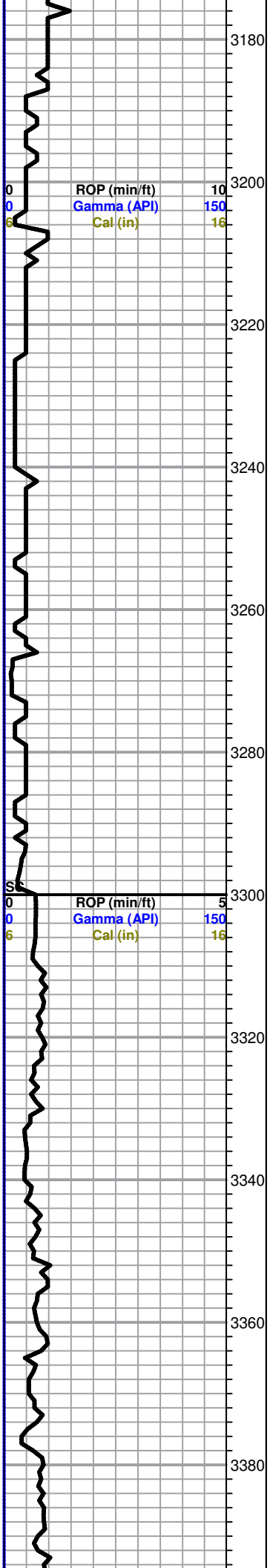


----- Cottonwood 3115 -293 -----

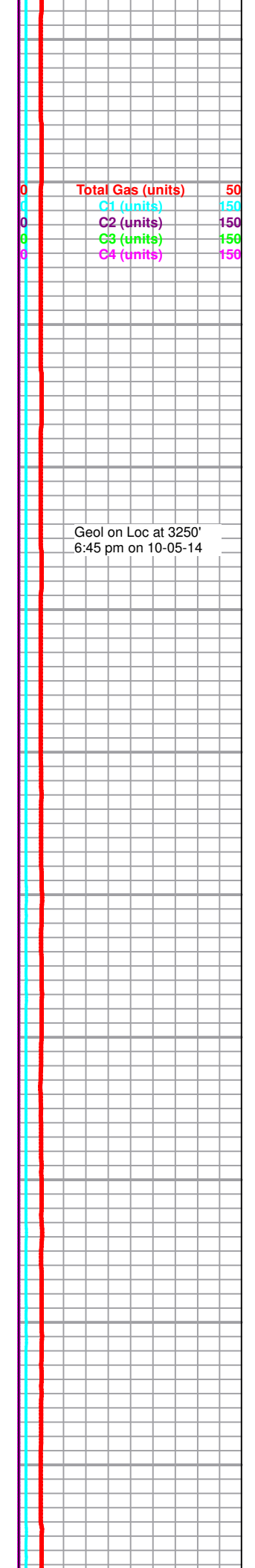
----- Neva 3157 -335 -----

Total Gas (units) 50  
C1 (units) 150  
C2 (units) 150  
C3 (units) 150  
C4 (units) 150

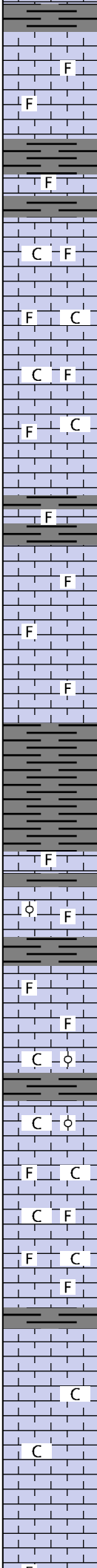
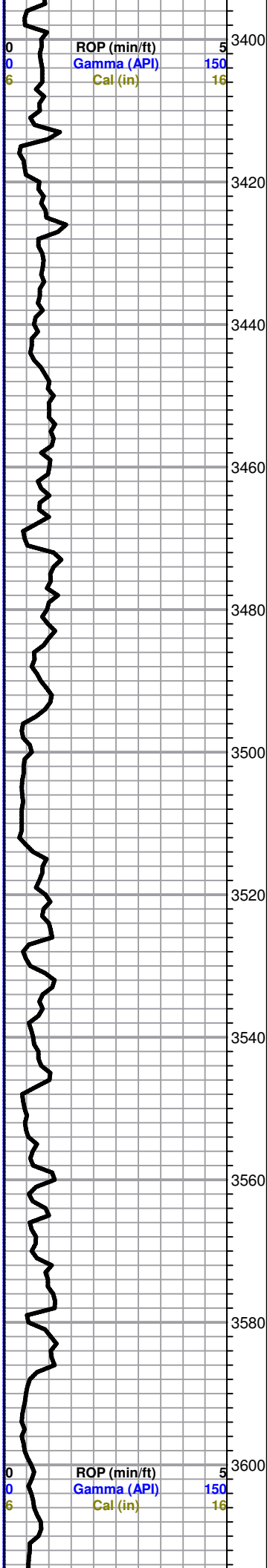




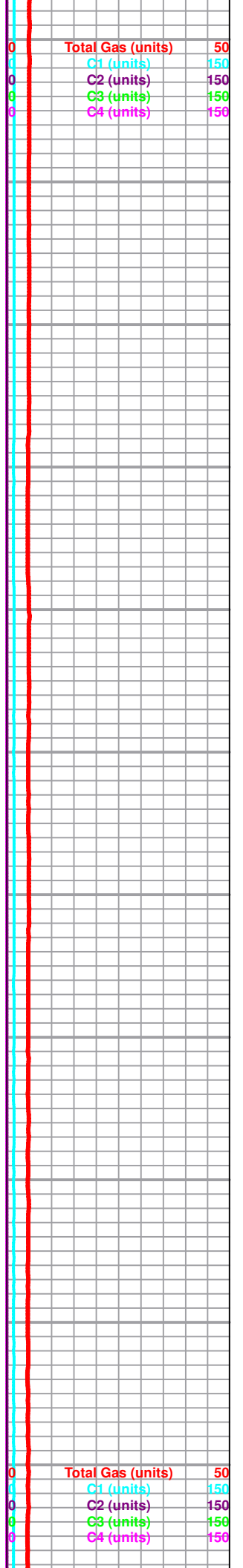
Sh-gry/dk gry  
 Ls-lt gry/crm fxln mhd fr inte xln por nsfo  
 Sh-gry/dk gry  
 Ls-crm/lt gry fxln mhd no por  
 Sh-gry/dk gry  
 ----- **Foraker 3272 -450** -----  
 Ls-lt gry/crm fxln mhd no por  
 Sh-gry/dk gry  
 Ls-lt gry/crm fxln mhd no por  
 Sh-gry/dk gry  
 Ls-crm/lt gry fxln mhd no por  
 Ls-AA  
 Ls-lt gry fxln mhd no por  
 Sh-gry/dk gry  
 Ls-lt gry fxln mhd no por  
 Ls-AA  
 Ls-lt gry/crm fxln mhd no por  
 Ls-AA  
 Sh-gry/dk gry  
 Ls-lt gry/crm fxln mhd sl fos no por  
 Sh-gry/dk gry  
 Ls-crm/lt gry fxln mhd sl fos no por  
 Ls-AA  
 Sh-gry/dk gry  
 Ls-crm/lt gry fxln mhd sl fos no por  
 Sh-gry/dk gry  
 Ls-crm/lt gry fxln mhd sl fos no por  
 Ls-AA  
 Ls-crm/lt gry fxln mhd sl fos no por



Geol on Loc at 3250'  
 6:45 pm on 10-05-14

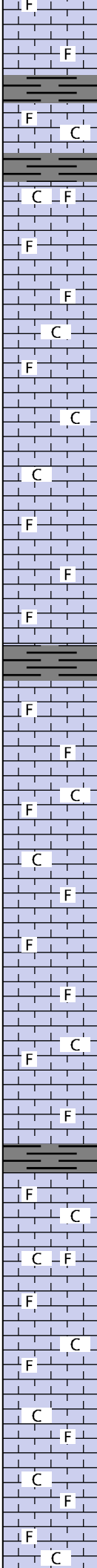


Sh-gry/dk gry  
 Ls-crm/lt gry fxln mhd sl fos no por  
 Ls-AA  
 Sh-gry/dk gry  
 Ls-crm/gry fxln mhd sl fos no por  
 Sh-gry/dk gry  
 Ls-crm/gry f/mxln soft/mhd sl clkly sl fos no por  
 Ls-AA  
 Ls-AA  
 Ls-crm/gry f/mxln mhd sl clkly sl fos no por  
 Ls-AA  
 Ls-AA  
 Sh-gry/dk gry  
 Ls-gry f/mxln mhd sl fos no por  
 Sh-gry/dk gry  
 Ls-gry f/mxln mhd sl fos no por  
 Ls-AA  
 Ls-gry/brn fxln mhd/dns sl fos no por  
 Ls-AA  
 ----- **Root Shale 3496 -674** -----  
 Sh-gry/dk gry  
 Sh-AA  
 Sh-AA  
 ----- **Stotler 3514 -692** -----  
 Ls-gry mott dk gry f/mxln dns fos no por  
 Sh-gry/dk gry  
 Ls-tan/gry sm mott dk gry fxln mhd/dns sl fos sl ool no por  
 Sh-gry/dk gry  
 Ls-gry fxln mhd sl fos no por  
 Ls-AA  
 Ls-crm/lt gry fxln mhd clkly fos sl ool no por  
 Sh-gry/dk gry  
 Ls-crm/lt gry fxln mhd clkly fos sl ool pr por inter xln por nsfo  
 Ls-crm/lt gry fxln soft clkly fos pr inter xln por nsfo  
 Ls-crm/lt gry fxln mhd sl clkly fos no por  
 Ls-crm/lt gry fxln soft clkly fos pr inter xln por nsfo  
 Ls-crm/tan f/mxln mhd sl fos no por  
 ----- **Tarkio 3581 -759** -----  
 Ls-crm/tan fxln dns no por  
 Ls-crm/tan f/mxln soft clkly pr inter xln por nsfo  
 Ls-AA  
 Ls-lt gry/crm fxln mhd no por  
 Ls-AA





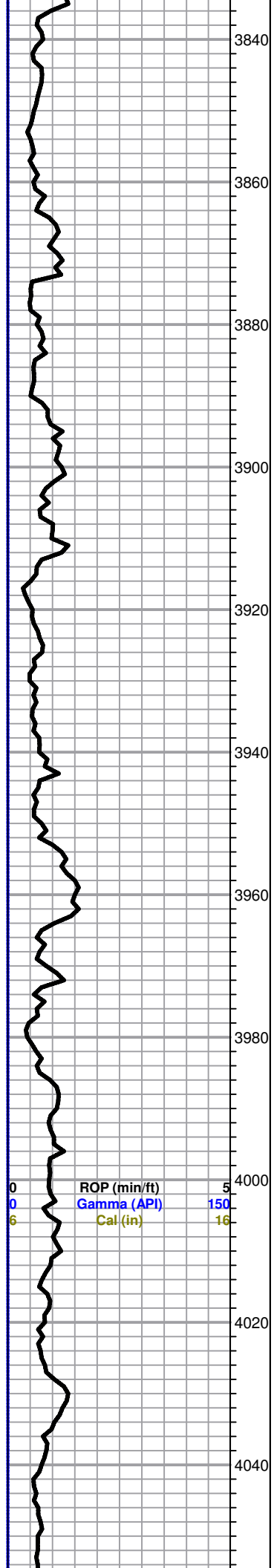
3620  
3640  
3660  
3680  
3700  
3720  
3740  
3760  
3780  
3800  
3820



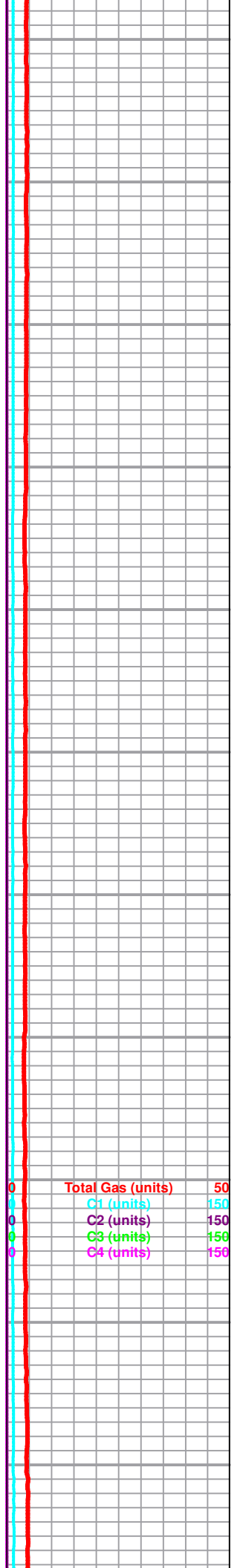
Ls-crm/lt gry fxln dns sl fos no por  
Ls-AA  
Sh-gry/dk gry  
Ls-crm/lt tan fxln soft clkly sl fos pr inter xln por nsfo  
Sh-gry/dk gry  
Ls-crm/lt tan fxln mhd sl clkly sl fos no por  
Ls-lt gry/crm f/mxln dns sl fos no por  
Ls-AA  
Ls-crm/lt tan fxln mhd sl clkly no por  
Ls-crm/tan/lt gry f/mxln mhd fos pr inter xln por nsfo  
Ls-crm/lt tan fxln mhd sl clkly no por  
Ls-AA  
Ls-lt gry/gry f/mxln mhd/dns sl fos no por  
Ls-AA  
Ls-lt gry/gry f/mxln soft/mhd pr/fr inter xln por nsfo  
Sh-gry/dk gry  
Ls-lt gry/tan fxln mhd/dns sl fos no por  
Ls-AA  
Ls-crm/tan/lt gry fxln soft/mhd sl fos clkly fr inter xln por nsfo  
Ls-crm/tan fxln mhd sl clkly no por  
Ls-lt gry f/mxln dns fos no por  
Ls-AA  
Ls-lt gry/gry f/mxln mhd fos no por  
Ls-lt gry/crm f/xln mhd sl fos no por sm Ls-wt fxln soft clkly no por  
Ls-gry f/mxln mhd/dns fos no por  
Ls-AA  
----- **Topeka 3779 -957** -----  
Ls-lt gry/crm/tan f/mxln mhd sl clkly sl fos no por  
Ls-crm/lt gry f/mxln soft sl clkly sl fos fr inter xln por nsfo  
sm Ls-wt fxln soft clkly no por  
Ls-crm/tan f/mxln dns sl clkly sl fos no por  
Ls-AA  
Ls-crm/tan/lt gry f/mxln dns sl clkly fos no por  
Ls-AA  
Ls-tan/gry fxln soft/mhd sl fos pr inter xln por nsfo

ROP (min/ft) 5  
Gamma (API) 150  
Cal (in) 16

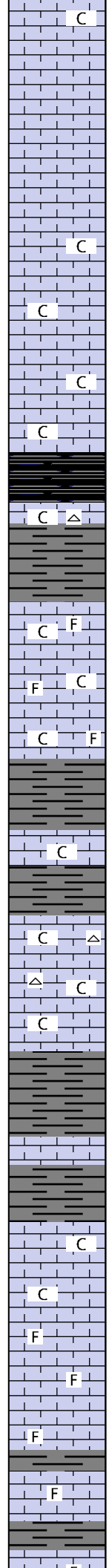
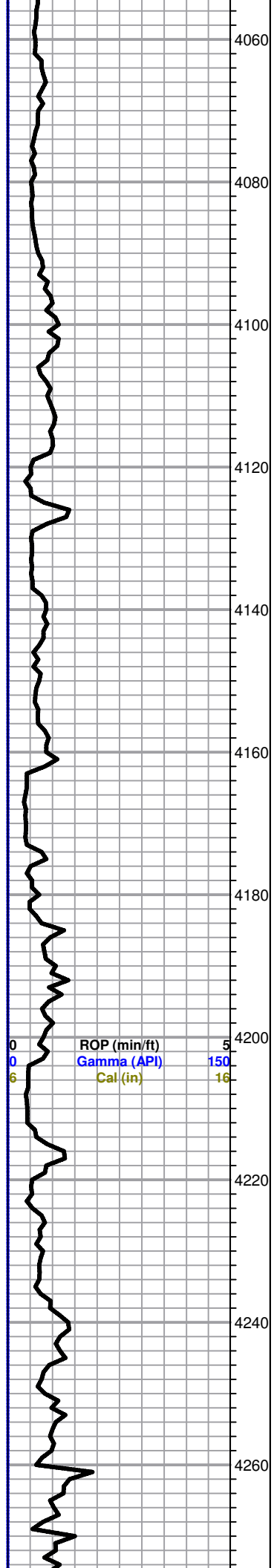
Total Gas (units) 50  
C1 (units) 150  
C2 (units) 150  
C3 (units) 150  
C4 (units) 150



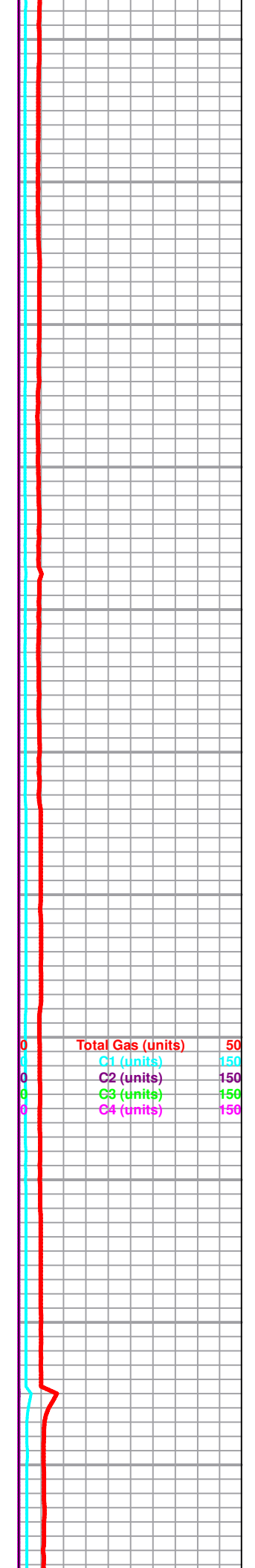
3840	F	Ls-AA
	C	
	F	Ls-crm/lt gry f/mxln mhd/dns sl fos no por
3860	F	Ls- AA
	C	Ls-crm/tan/lt gry f/mxln dns sl clkly no por
		Sh-gry/dk gry
3880	C	Ls-crm/lt gry fxln soft sl clkly fr inter xln por nsfo sm Ls-wt fxln soft clkly no por
	C	Ls-tan/gry f/mxln mhd fos no por
	F	Ls-AA
	F	Ls-tan/gry f/mxln dns sl fos no por
3900		Ls-AA
		Ls-AA
	F	Ls-crm/tan f/mxln soft sl clkly sl fos no por sm Ls-wt fxln soft clkly
	C	Ls-AA
3920	C	Ls-crm/tan f/mxln mhd/dns sl clkly sl fos no por
	F	Ls-crm/tan f/mxln mhd sl clkly sl fos no por
	C	Ls-AA
3940	F	Ls-crm/tan f/mxln mhd/dns sl clkly sl fos no por
	F	Ls-crm/lt tan f/mxln mhd sl clkly sl fos no por
	C	Ls-AA
3960	F	Ls-tan/lt gry f/mxln mhd/dns fos no por
		Sh-gry/dk gry
	C	Ls-crm/lt tan f/mxln mhd sl clkly no por
		----- Lecompton 3974 -1152 -----
3980	C	Ls-crm/lt tan f/mxln soft sl clkly no por sm Ls-wt fxln soft clkly no por
		Sh-gry/dk gry
	F	Ls-lt gry f/mxln mhd/dns fos no por
	F	Ls-AA
4000	F	Ls-AA
		Sh-gry/dk gry
	F	Ls-lt gry f/mxln mhd fos no por
	F	Ls-AA
4020	F	Ls-lt gry fxln dns sl fos no por
	F	Ls-AA
		Sh-gry/dk gry
	F	Ls-lt gry/gry f/mxln mdh/dns sl fos no por
4040	F	Ls-AA
	C	Ls-lt gry/lt gry fxln soft sl clkly no por sm Ls-wt fxln soft clkly no por



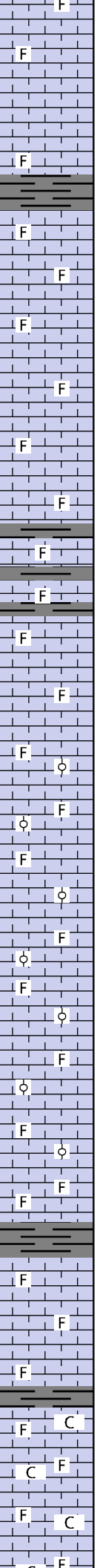
0	Total Gas (units)	50
0	C1 (units)	150
0	C2 (units)	150
0	C3 (units)	150
0	C4 (units)	150



Ls-AA  
 Ls-gry/lt gry fxln dns no por  
 Ls-AA  
 Ls-lt gry fxln dns no por  
 Ls-lt gry/crm fxln mhd sl clk no por  
 Ls-AA  
 Ls-lt gry/crm fxln mhd sl clk no por  
 Ls-AA  
 Ls-lt gry/crm fxln mhd sl clk no por  
 ----- Heebner 4118 -1296 -----  
 Sh-blk carb  
 Ls-lt gry/gry fxln dns no por sm Cht-wt fsh opa  
 Sh-gry/dk gry  
 ----- Toronto 4138 -1316 -----  
 Ls-crm/wt fxln soft clk sl fos no por  
 Ls-AA  
 Ls-lt gry/crm f/mxln mhd sl clk sl fos no por  
 ----- Douglas 4161 -1339 -----  
 Sh-gry/dk gry  
 Ls-lt gry/crm fxln soft/mhd clk no por  
 Sh-gry/dk gry  
 Ls-lt gry/crm fxln mhd sl clk no por sm Cht-wt fsh opa  
 Ls-AA sm Cht-wt fsh opa  
 Ls-lt gry/crm fxln mhd sl clk no por  
 Sh-gry/dk gry  
 Sh-AA  
 ----- Iatan 4214 -1392 -----  
 Ls-tan/brn fxln dns no por  
 Sh-gry/dk gry  
 ----- Lansing 4226 -1404 -----  
 Ls-tan fxln soft/mhd sl clk no por  
 Ls-AA  
 Ls-crm/tan fxln mhd sl fos no por  
 Ls-AA  
 Ls-crm/lt gry fxln dns sl fos no por  
 Sh-gry/dk gry  
 Ls-crm/tan f/mxln mhd sl fos no por  
 Sh-gry/dk gry  
 Ls-lt gry fxln mhd sl fos no por



4280  
4300  
4320  
4340  
4360  
4380  
4400  
4420  
4440  
4460  
4480



Ls-lt gry fxln mhd sl fos no por  
Ls-AA  
Ls-lt gry/gry fxln mhd no por  
Ls-AA  
Ls-lt gry/tan f/mxln mhd sl fos no por  
Sh-gry/dk gry  
Ls-lt gry/tan f/mxln mhd sl fos no por  
Ls-lt gry/crm fxln mhd sl fos nsfo  
Ls-AA  
Ls-lt gry/gry/brn f/mxln mhd sl fos no por  
Ls-AA  
Ls-lt gry/gry/dk gry f/mxln mhd sl fos no por  
Ls-AA  
Sh-gry/dk gry  
Ls-lt gry/gry/tan fxln mhd sl fos no por  
Sh-gry/dk gry  
Ls-lt gry fxln dns sl fos no por  
Sh-gry/dk gry  
Ls-lt gry fxln dns sl fos no por  
Ls-lt gry/crm mott dk gry f/mxln mhd sl fos no por  
Ls-AA  
Ls-tan/lt gry f/mxln soft fos sl ool sl ooc fr inter ool/ooc por nsfo  
Ls-AA  
Ls-crm/tan/gry f/mxln soft/mhd fos ool and ooc fr ooc por nsfo  
Ls-AA  
Ls-crm/tan f/mxln soft fos ool and ooc fr ooc por nsfo  
Ls-AA  
Ls-tan/lt gry f/mxln soft fos sl ool fr inter ool por nsfo  
Ls-AA  
Ls-AA  
Ls-lt gy/gry f/mxln dns sl fos no por  
Ls-lt gry/gry/tan fxln mhd sl fos no por  
----- **Muncie Creek 4446 -1624** -----  
Sh-gry/dk gry  
Ls-lt gry/gry fxln mhd sl fos no por  
Ls-lt gry/crm mott gry f/mxln soft sl fos pr inter xln por nsfo  
Ls-lt gry/crm f/mxln mhd/dns sl fos no por  
Sh-gry/dk gry  
Ls-lt gry/crm f/mxln mhd/dns clky sl fos no por  
Ls-lt gry f/mxln mhd sl fos sl fos no por  
Ls-lt gry f/mxln mhd/dns sl clky sl fos no por

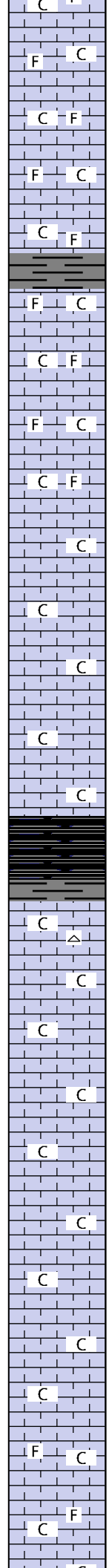
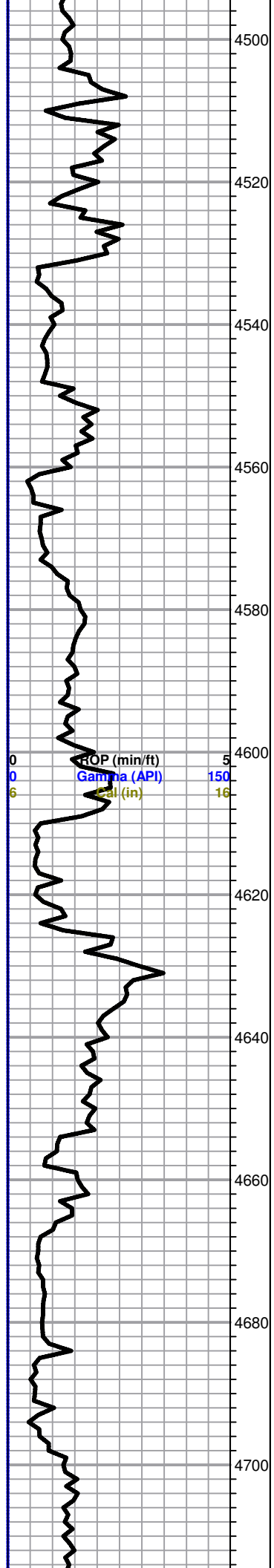
ROP (min/ft) 5  
Gamma (API) 150  
Cal (in) 16

Gas test at 4350'

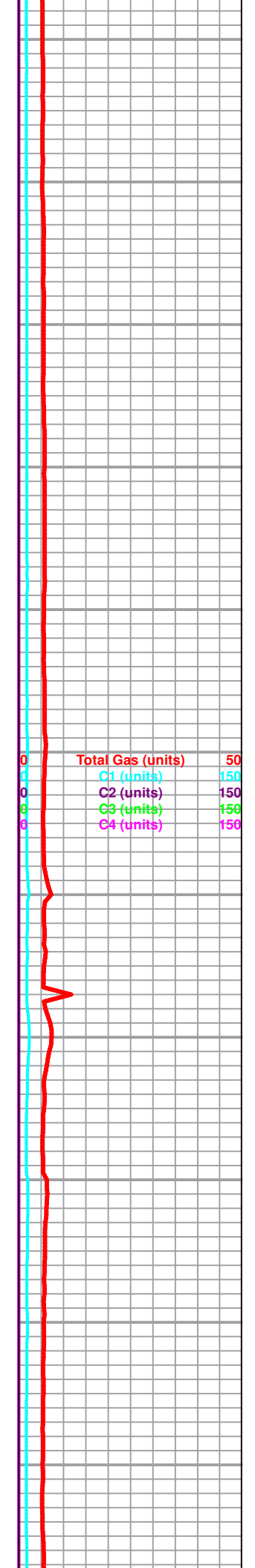
**Mud Data at 4389'**  
1:10 pm 10-06-14  
Wt 9.4 Vis 43  
WL 11.6 pH 10  
Chl 4400 Sol 7.6%  
YP 14 LCM 1/2#

<b>Total Gas (units)</b>	<b>50</b>
C1 (units)	150
C2 (units)	150
C3 (units)	150
C4 (units)	150



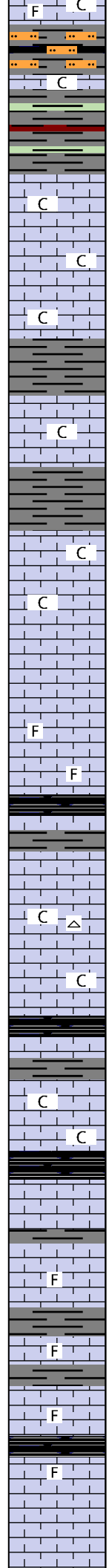
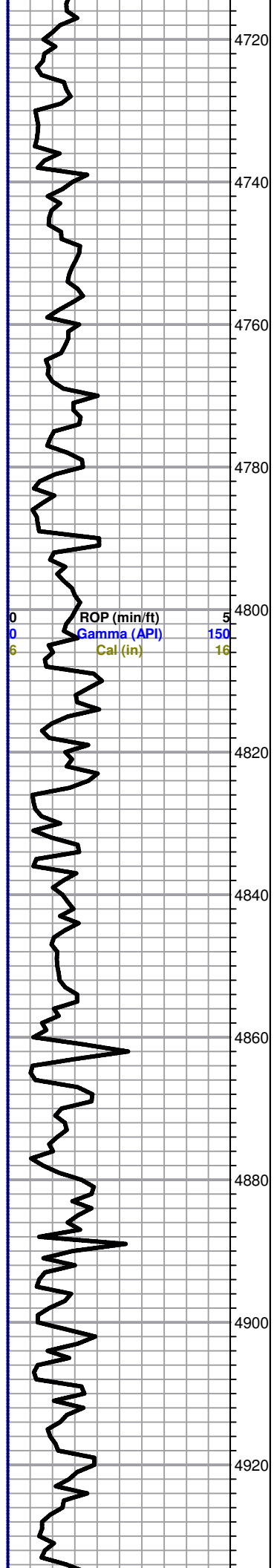


Ls-AA  
 Ls-lt gry/crm f/mxln mhd sl clkly sl fos no por  
 Ls-AA  
 Ls-lt gry/tan f/mxln mhd sl clkly sl fos no por  
 Ls-AA  
 Ls-tan/gry f/mxln mhd clkly sl fos no por  
 Sh-gry/dk gry  
 Ls-tan/gry f/mxln mhd clkly sl fos no por  
 Ls-tan/gry fxln dns clkly sl fos no por  
 Ls-AA  
 Ls-crm/lt gry mott gry f/mxln soft/mhd clkly sl fos no por  
 Ls-AA  
 Ls-lt gry fxln mhd sl clkly no por  
 Ls-lt gry/crm fxln mhd/dns sl cly no por  
 Ls-AA  
 Ls-lt gry/gry fxln mhd sl clkly no por  
 Ls-lt gry/gry fxln dns sl clkly no porr  
 ----- Stark 4609 -1787 -----  
 Sh-blk carb  
 ----- Swope 4621 -1799 -----  
 Ls-lt gry/gry fxln mhd sl clkly no por sm Cht-wt fsh opaq  
 Ls-lt gry/gry fxln mhd/dns sl clkly no por  
 Ls-AA  
 Ls-lt gry/gry fxln mhddns sl clkly no por sm Ls-crm mott gry fxln soft clkly no por  
 Ls-AA  
 Ls-gry fxln mhd/dns sl clkly no por  
 Ls-lt gry/gry fxln mhd sl clkly no por  
 Ls-AA  
 Ls-lt gry/gry fxln mhd sl clkly no por  
 Ls-AA  
 Ls-lt gry/gry fxln mhd sl clkly sl fos no por  
 Ls-AA  
 Ls-lt gry fxln mhd/dns sl clkly sl fos no por



ROP (min/ft) 5  
 Gamma (API) 150  
 SFL (in) 16

Total Gas (units) 50  
 C1 (units) 150  
 C2 (units) 150  
 C3 (units) 150  
 C4 (units) 150



Sh-gry/dk gry/blk sm Siltstone-lt gry/gry grn vfgrn  
 Ls-lt gry fxln mhd/dns sl clky no por

Sh-gry/dk gry/dk grn/sm mar

----- **Marmaton 4739 -1917** -----

Ls-crm/lt tan f/mxln mhd sl clky no por

Ls-AA

Ls-crm/lt tan fxln mhd sl clky no por

Sh-gry/dk gry

Ls-crm/lt gry fxln mhd sl clky no por

Sh-gry/dk gry

Ls-lt gry/crm fxln mhd sl clky no por

Ls-AA

Ls-crm/lt gry/gry fxln mhd/dns no por

Ls-AA

Ls-tan/crm fxln dns sl fos no por

----- **Pawnee 4829 -2007** -----

Ls-tan fxln dns no por  
 Sh-gry/dk gry

Ls-tan/crm/lt gry f/mxln mhd no por

Ls-crm/tan fxln mhd sl clky no por sm Cht-wt fsh opaq

Ls-AA

Ls-lt gry/crm fxln mhd sl clky no por

----- **Labette Shale 4857 -2035** -----

Sh-blk carb  
 Ls-tan/brn fxln dns no por  
 Sh-gry/dk gry

Ls-lt gry/sm crm mott gry f/mxln mhd sl clky no por

Ls-AA

----- **Cherokee Shale 4876 -2054** -----

Sh-blk carb

Ls-tan fxln mhd/dns no por

Sh-gry/dk gry

Ls-tan/gry f/mxln mhd/dns sl fos no por

Sh-gry/dk gry

Ls-tan/gry f/mxln dns sl fos no por

Sh-gry/dk gry

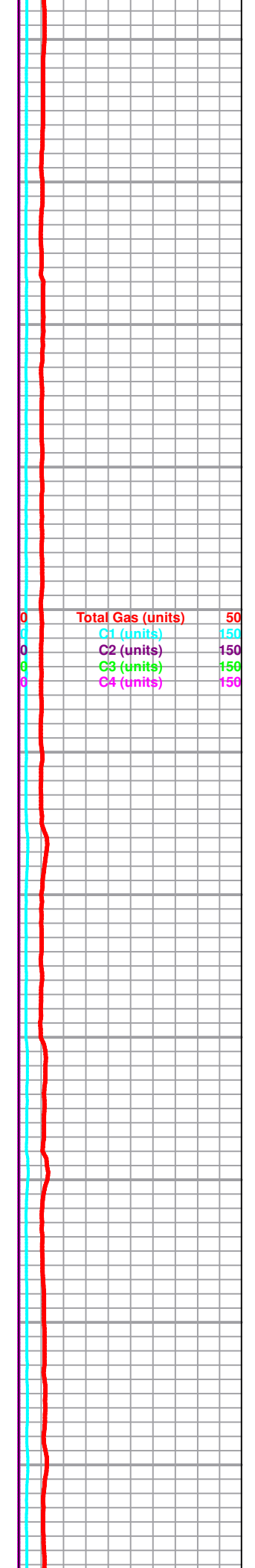
Ls-tan/gry f/mxln dns fos no por

----- **Lower Cherokee Shale 4916 -2094** -----

Sh-blk carb  
 Ls-tan/gry f/mxln dns sl fos no por

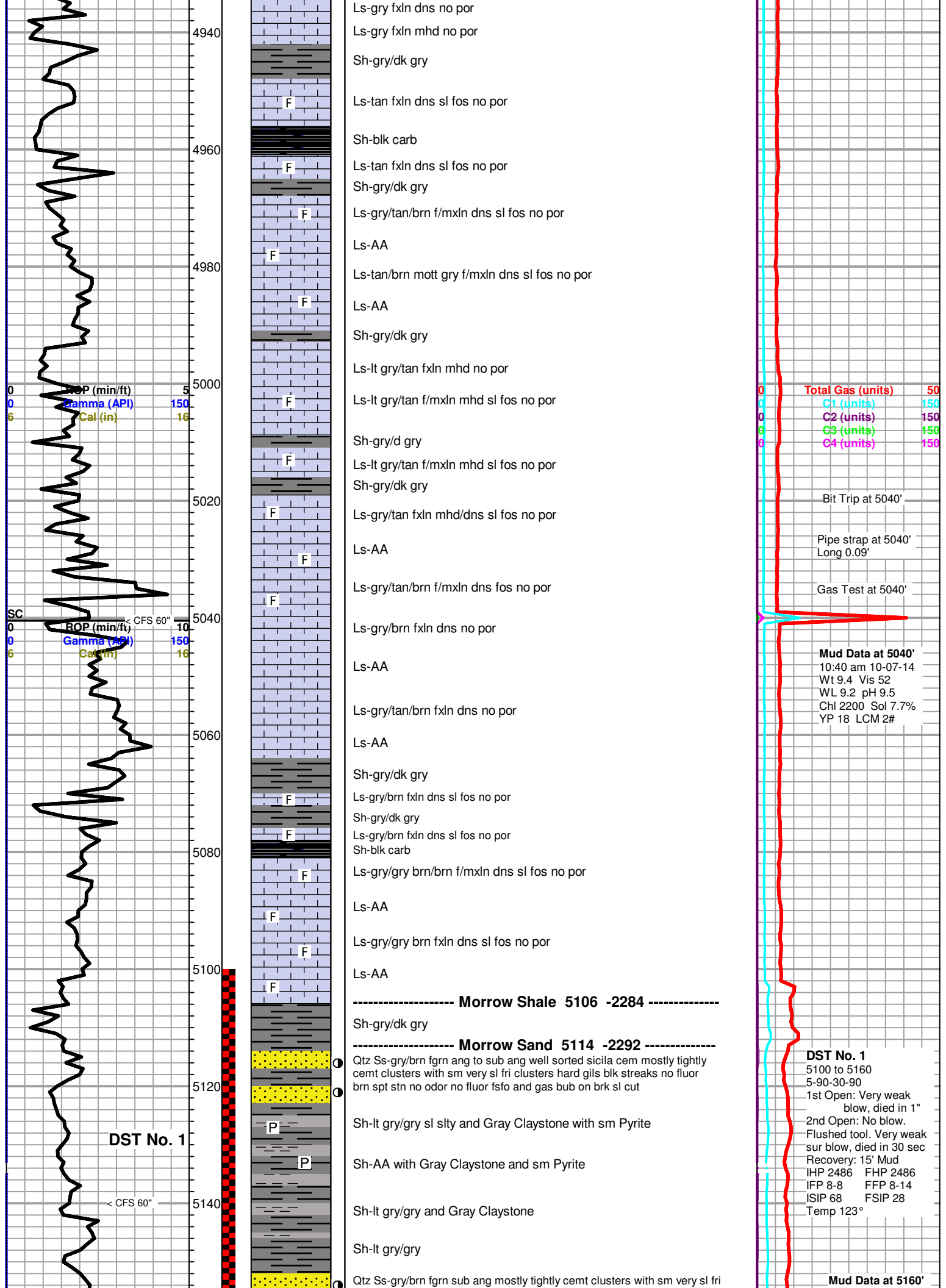
Ls-gry/tan fxln mhd/dns no por

Ls-gry/tan fxln mhd no por



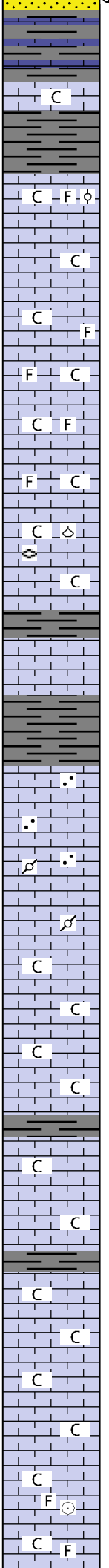
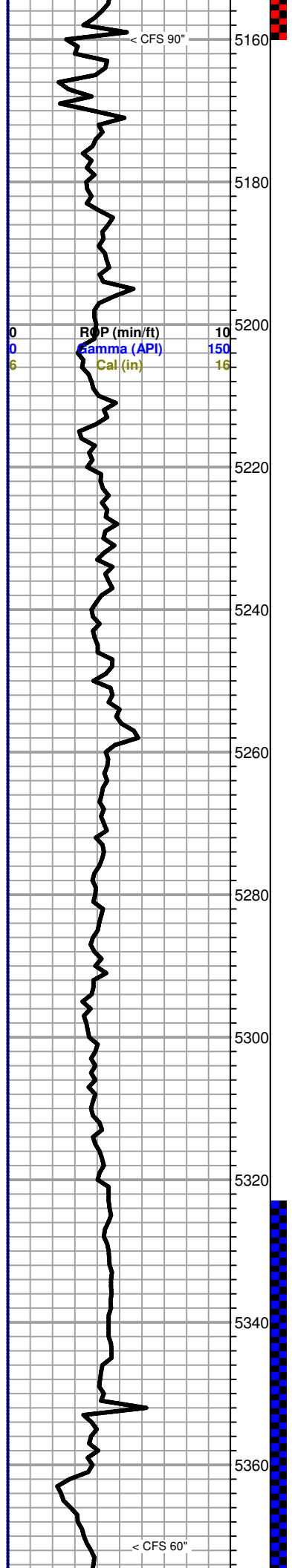
ROP (min/ft) 5  
 Gamma (API) 150  
 Cal (in) 16

Total Gas (units) 50  
 C1 (units) 150  
 C2 (units) 150  
 C3 (units) 150  
 C4 (units) 150



clusters sm gils blk streaks brn spt str no odor no flouo fsfo on brk sl cut

10:50 am 10-08-14  
Wt 9.4 Vis 52  
WL 9.2 pH 9  
Chl 3400 Sol 7.7%  
YP 17 LCM 3#



Sh-gry/dk gry with sm Ls-gry mott dk gry fxln mhd/dns no por

Ls-lt gry f/mxln mhd sl clky no por

Sh-lt gry/gry

----- **Miss-Chester 5179 -2357** -----

Ls-lt gry cxln mhd sl clky fos with blk ool and irregular shaped fos no por

Ls-crm/lt gry f/mxln mhd clky no por

Ls-AA

Ls-crm/lt gry m/cxln mhd sl clky sl fos no por

Ls-AA

Ls-gry/lt gry cxln to blkly mhd/dns sl clky fos no por

Ls-AA

Ls-tan/lt gry cxln to blkly mhd sl clky fos no por sm free Fuss and Brach

Ls-crm/lt gry f/mxln mhd clky no por

Sh-gry/dk gry

Ls-lt gry/crm fgran mhd no por

Sh-gry/dk gry

----- **Saint Gen 5262 -2440** -----

Ls-lt gry/crm/wt fgran mhd/dns no por

Ls-AA

Ls-crm/lt gry/wt fgran to pelletal mhd sl fos no por

Ls-AA

Ls-crm/lt tan fxln clky mhd no por

Ls-AA

Ls-crm/tan fxln sl clky mhd no por

Ls-AA

Sh-gry/dk gry

Ls-crm/lt tan fxln to sl gran mhd clky no por

Ls-AA

----- **St Louis 5333 -2511** -----

Ls-crm/wt f/mxln mhd sl clky no por

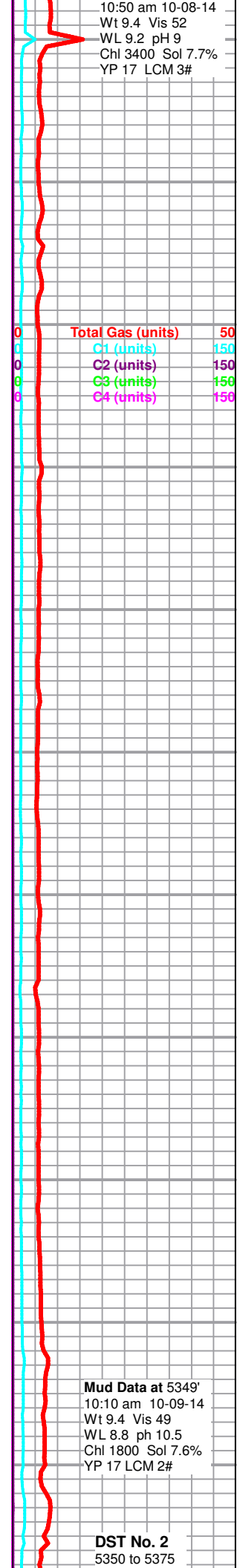
Ls-AA

Ls-crm f/mxln mhd sl clky no por

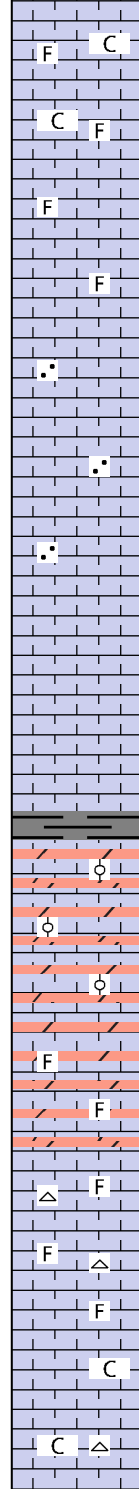
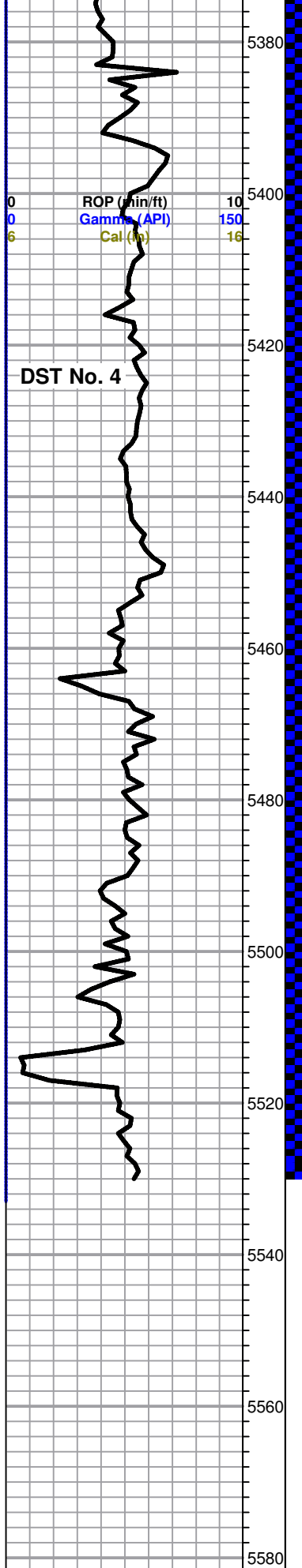
Ls-crm fxln mhd clky no por

Ls-crm/wt f/mxln mhd sl clky fos sl ool no por sm free Crin

Ls-crm/lt tan f/mxln mhd sl clky sl fos no por

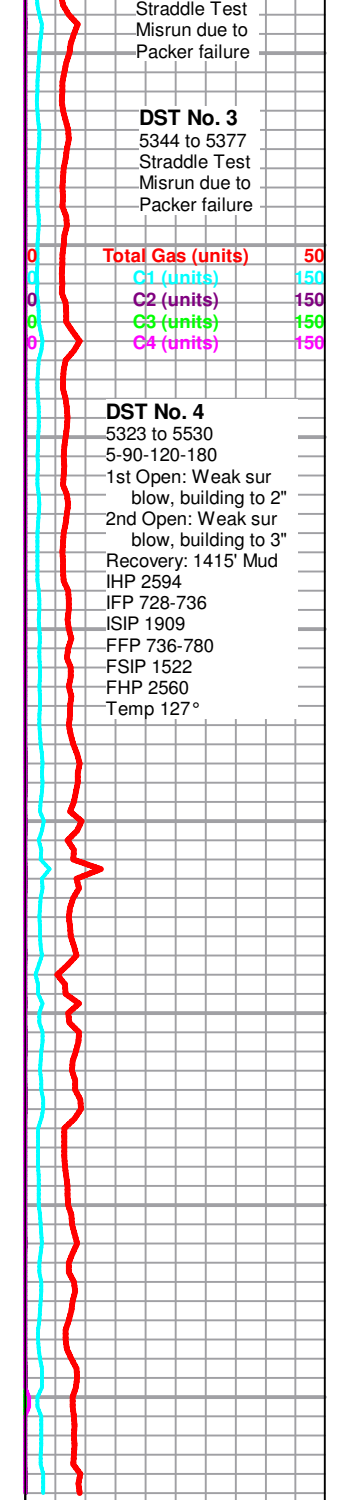






Ls-AA  
Ls-AA  
Ls-lt gry/tan f/mxln mhd/dns sl fos no por  
Ls-AA  
Ls-lt gry/tan fxln to sl gran mhd/dns no por  
Ls-AA  
Ls-lt gry/tan fxln to sl gran mhd/dns no por  
Ls-AA  
Ls-tan f/mxln mhd/dns no por  
Ls-AA  
----- **Spergen 5462 -2640** -----  
Ls-crm/tan f/mxln mhd/dns no por with sm Dolo-gry fxln dns sl fos ool fr inter ool por nsfo  
Ls and Dolo-AA  
Ls-crm/lt gry fxln mhd/dns no por with sm Dolo-lt gry fxln dns sl fos no por  
Ls and Dolo-AA  
Ls-crm/tan f/mxln mhd sl fos no por sm Cht-wt fsh opa  
Ls and Cht-AA  
Ls-crm/tan mxln soft/mhd fos sl clk fr inter xln por nsfo  
Ls-crm/lt tan f/mxln mhd/dns sl clk no por sm Cht-wt fsh opa  
----- **RTD 5530 -2708** -----

Finished Drilling at 5:12 am on 10-10-12. CFS - 60".  
Pulled 10 stand short trip, then Cir for Log - 90"  
  
Finished Logging at 4:56 pm on 10-10-12  
  
📷 VADAUNRUH1-25SEDST1all-2.jpg  
📷 VADAUNRUH1-25SEDST4all-2.jpg



**DST No. 3**  
5344 to 5377  
Straddle Test  
Misrun due to  
Packer failure

**DST No. 4**  
5323 to 5530  
5-90-120-180  
1st Open: Weak sur  
blow, building to 2"  
2nd Open: Weak sur  
blow, building to 3"  
Recovery: 1415' Mud  
IHP 2594  
IFP 728-736  
ISIP 1909  
FFP 736-780  
FSIP 1522  
FHP 2560  
Temp 127°

