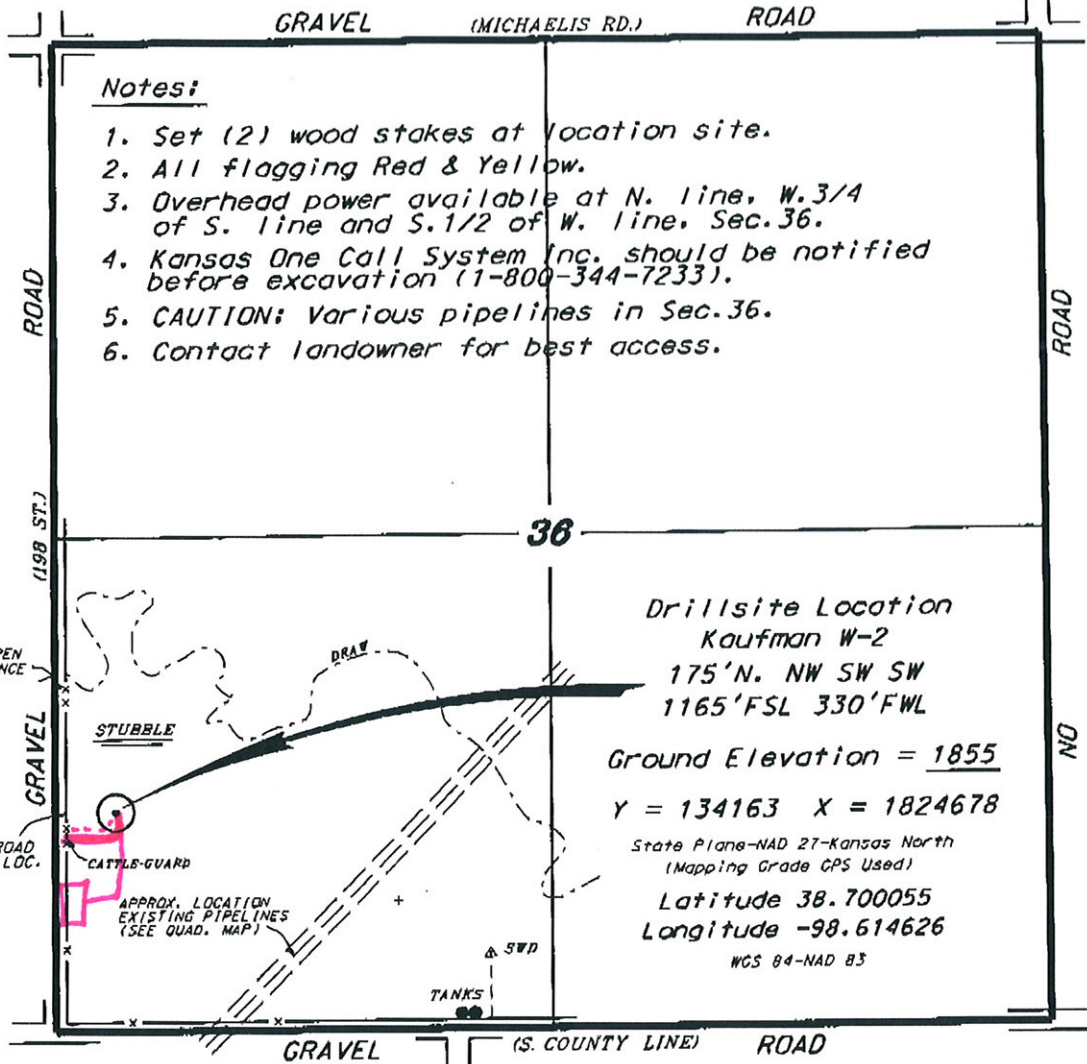


WEBCO OIL, INC.
KAUFMAN LEASE
 SW. 1/4, SECTION 36, T15S, R12W
 RUSSELL COUNTY, KANSAS



*Ingress and egress to location as shown on this plat is per usage only and may not be legally opened for public use. Contact landowner, tenant and county road department for access.

FLAGGED ROAD OPPOSITE LOC.

OPEN FENCE

ROAD

GRAVEL (198 ST.)

GRAVEL (MICHAELIS RD.) ROAD

36

Drillsite Location
 Kaufman W-2
 175'N. NW SW SW
 1165'FSL 330'FWL

Ground Elevation = 1855

Y = 134163 X = 1824678

State Plane-NAD 27-Kansas North
 (Mapping Grade GPS Used)

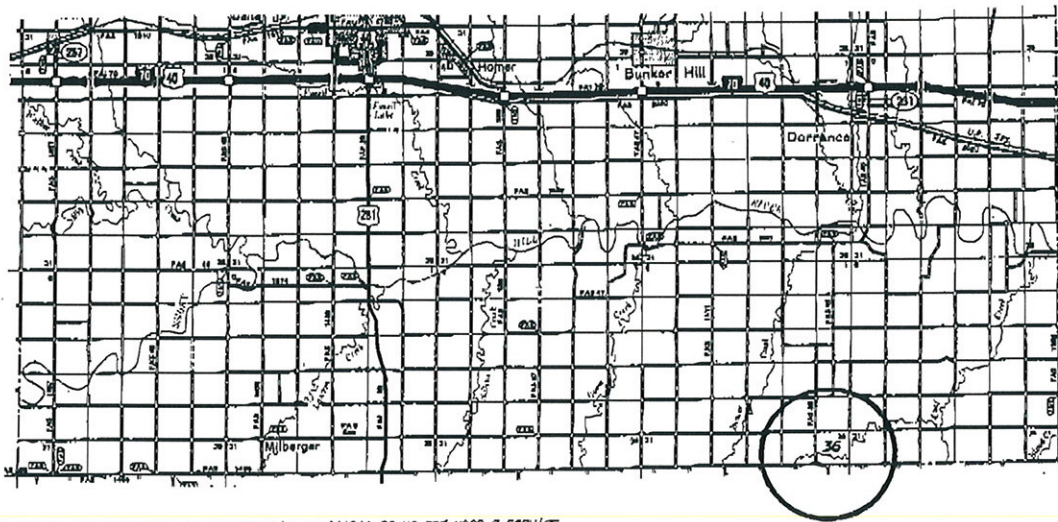
Latitude 38.700055
 Longitude -98.614626

NCS 84-NAD 83

ROAD

NO

GRAVEL (S. COUNTY LINE) ROAD



- Controlling data is based upon the best maps and photographs available to us and upon a regular section of land containing 640 acres.
- Approximate section lines were determined using the normal standard of care of oilfield surveyors practicing in the state of Kansas. The section corners, which establish the precise section lines, were not necessarily located, and the exact location of the drillsite location in the section is not guaranteed. Therefore, the operator assuming this survey and accepting this plat and all other parties relying thereon agree to hold Central Kansas Oilfield Services, Inc., its officers and employees harmless from all losses, costs and expenses and said entities released from any liability from incidental or consequential damages.
- Elevations derived from National Geodetic Vertical Datum.

Date January 6, 2015