

JAMES C. MUSGROVE

Petroleum Geologist, LLC

212 Main Street

P.O. Box 215

Clafin, KS 67525

Office (620) 588-4250

Res. Clafin (620) 587-3444

Mai Oil Operations
Long 'A' #3
N/2-SE-SW-NE (2280' FNL & 1650' FEL)
Section 22-21s-12w
Stafford County, Kansas

Page 1

5 1/2" Production Casing Set

Contractor: Southwind Drilling Co. (rig #3)
Commenced: October 21, 2014
Completed: October 29, 2014
Elevation: 1846' K.B., 1844' D.F., 1836' G.L.
Casing program: Surface; 8 5/8" @ 641'
Production, 5 1/2" @ 3693'
Sample: Samples saved and examined 2900' the Rotary Total Depth.
Drilling time: One (1) foot drilling time recorded and kept 2900' to the Rotary Total Depth.
Measurements: All depths measured from the Kelly Bushing.
Drill Stem Tests: There were eight (8) Drill Stem Tests ran by Diamond Testing Co.
Electric Log: By Pioneer, Dual Induction, Dual Compensated Porosity and Micro-Resistivity Log.

<u>Formation</u>	<u>Log Depth</u>	<u>Sub-Sea Datum</u>
Anhydrite	631	+1215
Base Anhydrite	653	+1193
Heebner	3101	-1255
Toronto	3118	-1272
Douglas	3134	-1288
Brown Lime	3236	-1390
Lansing	3249	-1403
Base Kansas City	3470	-1624
Viola	3483	-1637
Simpson Shale	3509	-1663
Arbuckle	3562	-1716
Rotary Total Depth	3693	-1847
Log Total Depth	3694	-1848

All tops and zones corrected to Electric Log Measurement.

SAMPLE ANALYSIS, SHOWS OF OIL, TESTING DATA, ETC.

TOPEKA SECTION

2900-3100' No shows of oil and/or gas was noted in the drilling of the Topeka Section.

TORONTO SECTION

3118-3130' Limestone, tan, brown, finely crystalline, poor visible porosity, dense.

LANSING SECTION

3250-3258' Limestone, tan, brown, finely crystalline, few fossiliferous, scattered porosity, no shows.

3264-3276' Limestone, tan, brown, finely crystalline, fossiliferous, dense.

3280-3290' Limestone, tan, finely crystalline, poor scattered porosity, light brown stain, show of free oil and faint odor.

3306-3310' Limestone, tan, finely crystalline, fossiliferous, poor scattered porosity, brown stain, trace of free oil and faint odor.

Drill Stem Test #1

3245-3310

Times: 30-30-45-45

Blow: Strong

**Recovery: 1550' gas in pipe
45' mud with oil spots**

**Pressures: ISIP 347 psi
FSIP 388 psi
IFP 17-22 psi
FFP 24-29 psi
HSH 1624-1543 psi**

3312-3350' Limestone, gray, tan, finely fossiliferous, poorly developed porosity, no shows.

3374-3381' Limestone, tan, cream, oomoldic, good oomoldic and vuggy type porosity, brown stain, show of free oil and no odor.

3390-3400' Limestone, tan, brown, finely crystalline, chalky, poor porosity, no shows, plus white chert.

3410-3420' Limestone, cream, tan, finely crystalline, oolitic, poorly developed porosity, light black stain, trace of free oil and no odor.

Stem Test #2

3358-3420

Times: 30-30-45-45

Blow: Weak

Recovery: 32' mud with oil spots

**Pressures: ISIP 371 psi
FSIP 403 psi
IFP 18-27 psi
FFP 29-34 psi
HSH 1656--1647 psi**

3432-3440' Limestone, tan, brown finely crystalline, poor visible porosity, no shows.

3448-3460' Limestone, cream, tan, finely crystalline, poor visible porosity, no shows.

VIOLA SECTION

3483-3507' Chert, white, to tan, yellow and gray, scattered porosity, black stain, show of free oil and faint odor.

Drill Stem Test #3

3418-3515

Times: 30-45-45-60

Blow: Weak

Recovery: 15' mud no show of oil (strong oil odor)

**Pressures: ISIP 39 psi
FSIP 34 psi
IFP 21-18 psi
FFP 17-211 psi
HSH 1757-1703 psi**

SIMPSON SECTION

3542-3545' Sand, clean white, sub-rounded, well sorted, friable in part, black stain, trace heavy black dead oil, and no odor in fresh samples.

ARBUCKLE SECTION

3562-3578' Dolomite, tan, brown gray, sucrosic, fine and medium crystalline, good stain, and saturation, show of free oil and strong odor in fresh samples.

Drill Stem Test #4 **3498-3578**

Times: 30-45-45-60

Blow: Fair

Recovery: 25' oil cut watery mud
(12 % oil; 12% water; 76% mud)

Pressures: ISIP 44 psi
FSIP 45 psi
IFP 20-23 psi
FFP 20-30 psi
HSH 1725-1703 psi

3578-3592' Dolomite, tan, white, gray, finely crystalline , sucrosic, poor to fair inter-crystalline porosity, brown stain, show of free oil and fair odor in fresh samples.

Drill Stem Test #5 **3578-3592**

Times: 30-45-45-60

Blow: Fair

Recovery: 175' gas in pipe
5' clean oil
28' heavily oil and gas cut mud
(14% gas; 36% oil; 50% mud)

Pressures: ISIP 995 psi
FSIP 1021 psi
IFP 18-23 psi
FFP 15-24 psi
HSH 1781-1764 psi

3592-3604' Dolomite, tan, brown, finely crystalline, sucrosic, fair inter-crystalline porosity, brown stain, show of free oil and faint odor.

Drill Stem Test #6 **3593-3604**

Times: 30-30-45-45

Blow: Fair

Recovery: 945' gas in pipe
10' clean oil
10' heavily oil cut mud
(35% oil; 65% mud)

Pressures: ISIP 329 psi
FSIP 186 psi
IFP 17-20 psi
FFP 19-27 psi
HSH 1789-1769 psi

3604-3619' Dolomite, as above, fair stain, show of free oil and faint fair odor in fresh samples.

Drill Stem Test #7 **3593-3619**

Times: 30-30-45-45
Blow: Strong
Recovery: 730' gas in pipe
35' clean oil
60' heavily oil and gas cut mud
(15% gas; 30% oil; 55% mud)
Pressures: ISIP 376 psi
FSIP 313 psi
IFP 35-49 psi
FFP 50-64 psi
HSH 1796-1766 psi

3620-3638' Dolomite, tan, brown, fine and medium crystalline, fair scattered inter-crystalline porosity, fair stain and saturation, fair show of free oil and strong odor in fresh samples.

Drill Stem Test #8 **3620-3638**

Times: 30-30-45-45
Blow: Fair
Recovery: 190' gas in pipe
8' clean oil
24' heavily oil and gas cut mud
(31% oil; 69% mud)
Pressures: ISIP 239 psi
FSIP 168 psi
IFP 21-24 psi
FFP 23-30 psi
HSH 1803-1789 psi

3638-3660' Dolomite, gray finely crystalline, good vuggy porosity, black stain, show of free oil and good odor in fresh samples.

3660-3680' Dolomite, white, gray, finely crystalline, poor inter-crystalline porosity, black stain, show of free oil and fair odor in fresh samples.

3680-3693' Dolomite, white, gray, finely crystalline poor visible porosity, trace white chert, no shows.

Mai Oil Operations
Long 'A' #3
N/2-SE-SW-NE (2280' FNL & 1650' FEL)
Section 22-21s-12w
Stafford County, Kansas

Page 6

Rotary Total Depth 3693

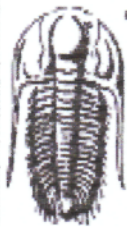
Recommendations:

The 5 ½" production casing set and cemented on the Mai Oil Operations Long 'A' #3.

Respectfully yours,

A handwritten signature in cursive script, appearing to read "Wyatt Urban".

Wyatt Urban
Petroleum Geologist



TRILOBITE TESTING, INC.

DRILL STEM TEST REPORT

Mai Oil Operations Inc.
8411 Preston Rd. Ste.800
Dallas TX .75225
ATTN: Wyatt Urban

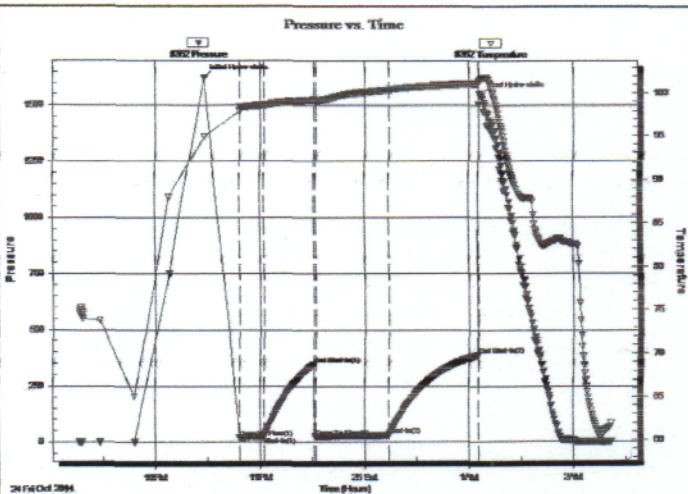
22-21s-12w Stafford,KS
Long A #3
Job Ticket: 57862 **DST#: 1**
Test Start: 2014.10.24 @ 21:16:04

GENERAL INFORMATION:

Formation: **LKC A - F**
Deviated: No Whipstock: ft (KB)
Time Tool Opened: 22:48:04
Time Test Ended: 02:21:49
Interval: **3245.00 ft (KB) To 3310.00 ft (KB) (TVD)**
Total Depth: 3310.00 ft (KB) (TVD)
Hole Diameter: 7.88 inches Hole Condition: Fair
Reference Elevations: 1846.00 ft (KB)
1838.00 ft (CF)
KB to GR/CF: 8.00 ft

Serial #: 8352 Outside
Press@RunDepth: 28.60 psig @ 3246.00 ft (KB)
Start Date: 2014.10.24 End Date: 2014.10.25
Start Time: 21:16:09 End Time: 02:21:48
Capacity: 8000.00 psig
Last Calib.: 2014.10.25
Time On Btm: 2014.10.24 @ 22:28:04
Time Off Btm: 2014.10.25 @ 01:07:04

TEST COMMENT: F:Strong blow . B.O.B. in 2 mins.
IS:Very weak blow . (surface) Dead in 12 mins.
FF:Strong blow . B.O.B. in 25 secs.
FS:No blow.



PRESSURE SUMMARY

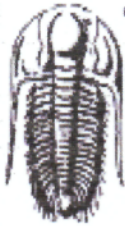
Time (Min.)	Pressure (psig)	Temp (deg F)	Annotation
0	1624.24	94.93	Initial Hydro-static
20	17.14	97.90	Open To Flow (1)
34	21.51	98.61	Shut-In(1)
63	347.19	99.19	End Shut-In(1)
64	23.53	99.07	Open To Flow (2)
106	28.60	100.36	Shut-In(2)
157	388.21	101.06	End Shut-In(2)
159	1542.93	101.67	Final Hydro-static

Recovery

Length (ft)	Description	Volume (bbl)
0.00	1550 ft.of GIP	0.00
45.00	Mud w o specs	0.63

Gas Rates

	Choke (Inches)	Pressure (psig)	Gas Rate (Mcf/d)



TRILOBITE TESTING, INC.

DRILL STEM TEST REPORT

Mai Oil Operations Inc.
 8411 Preston Rd. Ste.800
 Dallas TX .75225
 ATTN: Wyatt Urban

22-21s-12w Stafford,KS
Long A #3
 Job Ticket: 57863 **DST#: 2**
 Test Start: 2014.10.25 @ 12:27:54

GENERAL INFORMATION:

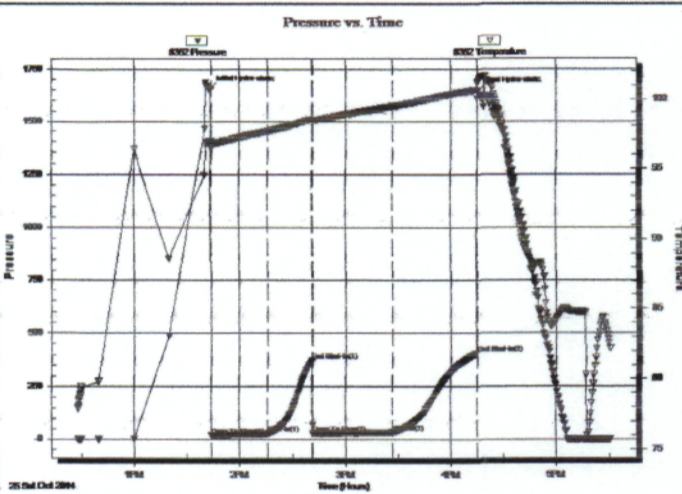
Formation: **LKC H - I**
 Deviated: No Whipstock: ft (KB)
 Time Tool Opened: 13:43:39
 Time Test Ended: 17:30:39
 Interval: **3358.00 ft (KB) To 3420.00 ft (KB) (TVD)**
 Total Depth: 3420.00 ft (KB) (TVD)
 Hole Diameter: 7.88 inches Hole Condition: Fair
 Test Type: Conventional Bottom Hole (Reset)
 Tester: Gary Pevoteaux
 Unit No: 56
 Reference Elevations: 1846.00 ft (KB)
 1838.00 ft (CF)
 KB to GR/CF: 8.00 ft

Serial #: 8352

Outside

Press@RunDepth: 34.41 psig @ 3359.00 ft (KB)
 Start Date: 2014.10.25 End Date: 2014.10.25
 Start Time: 12:27:59 End Time: 17:30:38
 Capacity: 8000.00 psig
 Last Calib.: 2014.10.25
 Time On Btm: 2014.10.25 @ 13:42:54
 Time Off Btm: 2014.10.25 @ 16:15:24

TEST COMMENT: IF:Weak blow . 1/2".
 IS:No blow .
 FF:Weak blow . 1/2"decreasing.
 FS:No blow .



PRESSURE SUMMARY

Time (Min.)	Pressure (psig)	Temp (deg F)	Annotation
0	1655.64	96.91	Initial Hydro-static
1	17.86	96.39	Open To Flow (1)
33	27.41	97.64	Shut-In(1)
59	371.12	98.51	End Shut-In(1)
59	28.52	98.40	Open To Flow (2)
104	34.41	99.47	Shut-In(2)
152	402.94	100.66	End Shut-In(2)
153	1646.90	101.27	Final Hydro-static

Recovery

Length (ft)	Description	Volume (bbl)
32.00	Mud w/ tar like oil specs	0.45

* Recovery from multiple tests

Gas Rates

	Choke (inches)	Pressure (psig)	Gas Rate (Mcf/d)



TRILOBITE TESTING, INC

DRILL STEM TEST REPORT

Mai Oil Operations Inc.
 8411 Preston Rd. Ste.800
 Dallas TX .75225
 ATTN: Wyatt Urban

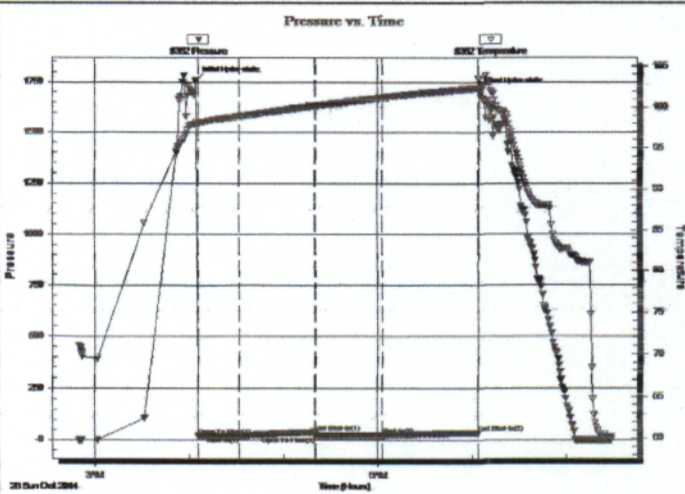
22-21s-12w Stafford,KS
Long A #3
 Job Ticket: 57864 **DST#: 3**
 Test Start: 2014.10.26 @ 02:49:45

GENERAL INFORMATION:

Formation: **Viola**
 Deviated: No Whipstock: ft (KB)
 Time Tool Opened: 04:05:30
 Time Test Ended: 08:28:30
 Interval: **3448.00 ft (KB) To 3515.00 ft (KB) (TVD)**
 Total Depth: 3515.00 ft (KB) (TVD)
 Hole Diameter: 7.88 inches Hole Condition: Fair
 Test Type: Conventional Bottom Hole (Reset)
 Tester: Gary Pevoteaux
 Unit No: 56
 Reference Elevations: 1846.00 ft (KB)
 1838.00 ft (CF)
 KB to GR/CF: 8.00 ft

Serial #: 8352 **Outside**
 Press@RunDepth: 21.45 psig @ 3449.00 ft (KB) Capacity: 8000.00 psig
 Start Date: 2014.10.26 End Date: 2014.10.26 Last Calib.: 2014.10.26
 Start Time: 02:49:50 End Time: 08:28:29 Time On Btm: 2014.10.26 @ 04:04:30
 Time Off Btm: 2014.10.26 @ 07:05:00

TEST COMMENT: IF:Weak blow . 1/2 - 1".
 IS:No blow .
 FF:Weak blow . 1/2" decreasing. Dead in 30 mins.
 FS:No blow .



PRESSURE SUMMARY

Time (Min.)	Pressure (psig)	Temp (deg F)	Annotation
0	1757.28	98.13	Initial Hydro-static
1	20.66	97.89	Open To Flow (1)
28	18.32	98.89	Shut-in(1)
75	39.27	100.17	End Shut-in(1)
76	17.45	100.17	Open To Flow (2)
118	21.45	101.15	Shut-in(2)
180	33.90	102.33	End Shut-in(2)
181	1702.54	102.73	Final Hydro-static

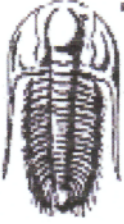
Recovery

Length (ft)	Description	Volume (bbl)
15.00	Drig.mud (good odor)	0.21

* Recovery from multiple tests

Gas Rates

	Choke (inches)	Pressure (psig)	Gas Rate (Mcf/d)



**TRILOBITE
TESTING, INC.**

DRILL STEM TEST REPORT

Mai Oil Operations Inc.
8411 Preston Rd. Ste.800
Dallas TX .75225
ATTN: Wyatt Urban

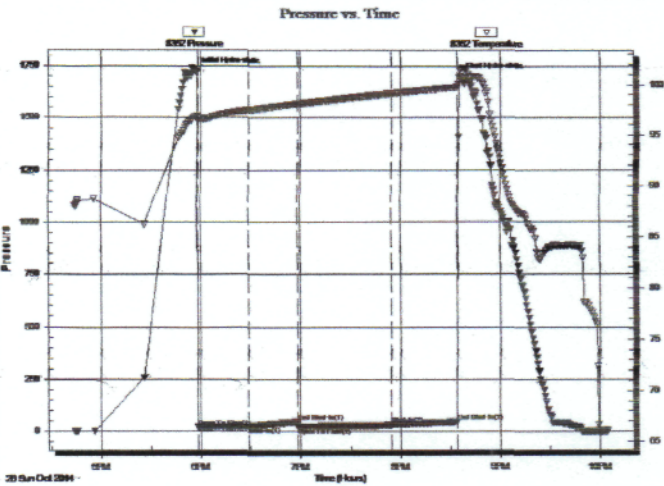
22-21s-12w Stafford,KS
Long A #3
Job Ticket: 57865 **DST#: 4**
Test Start: 2014.10.26 @ 16:44:21

GENERAL INFORMATION:

Formation: **Arbuckle**
Deviated: No Whipstock: ft (KB) Test Type: Conventional Bottom Hole (Reset)
Time Tool Opened: 17:58:06 Tester: Gary Pevoteaux
Time Test Ended: 22:04:06 Unit No: 56
Interval: 3498.00 ft (KB) To 3578.00 ft (KB) (TVD) Reference Elevations: 1846.00 ft (KB)
Total Depth: 3578.00 ft (KB) (TVD) 1838.00 ft (CF)
Hole Diameter: 7.88 inches Hole Condition: Fair KB to GR/CF: 8.00 ft

Serial #: 8352 Outside
Press@RunDepth: 30.33 psig @ 3499.00 ft (KB) Capacity: 8000.00 psig
Start Date: 2014.10.26 End Date: 2014.10.26 Last Calib.: 2014.10.26
Start Time: 16:44:26 End Time: 22:04:05 Time On Btm: 2014.10.26 @ 17:57:06
Time Off Btm: 2014.10.26 @ 20:35:51

TEST COMMENT: IF:Weak to fair blow. Increase to 4 12".
IS:No blow.
FF:Weak blow. 1/2 - 3".
FS:No blow.



PRESSURE SUMMARY

Time (Min.)	Pressure (psig)	Temp (deg F)	Annotation
0	1725.51	96.85	Initial Hydro-static
1	20.24	96.38	Open To Flow (1)
32	21.76	97.45	Shut-In(1)
61	44.11	98.08	End Shut-In(1)
62	20.46	98.07	Open To Flow (2)
118	30.33	99.11	Shut-In(2)
157	44.74	99.73	End Shut-In(2)
159	1702.58	101.35	Final Hydro-static

Recovery

Length (ft)	Description	Volume (bbl)
0.00	Trace of GP	0.00
25.00	OCWM 12%o 12%w 76%m	0.35

* Recovery from multiple tests

Gas Rates

Choke (inches)	Pressure (psig)	Gas Rate (Mcf/d)



TRILOBITE TESTING, INC

DRILL STEM TEST REPORT

Mai Oil Operations Inc.
 8411 Preston Rd. Ste.800
 Dallas TX .75225
 ATTN: Wyatt Urban

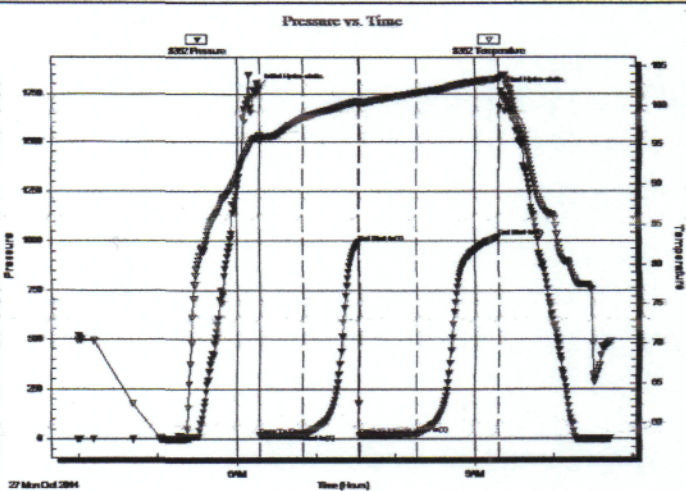
22-21s-12w Stafford,KS
Long A #3
 Job Ticket: 57866 **DST#: 5**
 Test Start: 2014.10.27 @ 03:59:23

GENERAL INFORMATION:

Formation: **Arbuckle**
 Deviated: **No** Whipstock: ft (KB)
 Time Tool Opened: 06:17:38
 Time Test Ended: 10:42:38
 Interval: **3578.00 ft (KB) To 3592.00 ft (KB) (TVD)**
 Total Depth: **3592.00 ft (KB) (TVD)**
 Hole Diameter: **7.88 inches** Hole Condition: **Fair**
 Test Type: **Conventional Bottom Hole (Reset)**
 Tester: **Gary Fevoeaux**
 Unit No: **56**
 Reference Elevations: **1846.00 ft (KB)**
 1838.00 ft (CF)
 KB to GR/CF: **8.00 ft**

Serial #: 8352 **Outside**
 Press@RunDepth: **23.79 psig @ 3579.00 ft (KB)** Capacity: **8000.00 psig**
 Start Date: **2014.10.27** End Date: **2014.10.27** Last Calib.: **2014.10.27**
 Start Time: **03:59:28** End Time: **10:42:37** Time On Btm: **2014.10.27 @ 06:16:38**
 Time Off Btm: 2014.10.27 @ 09:19:23

TEST COMMENT: IF: Weak to fair blow . 1 - 5 12".
 IS: No blow.
 FF: Fair to strong blow . B.O.B. in 45 mins.
 FS: No blow.



PRESSURE SUMMARY

Time (Min.)	Pressure (psig)	Temp (deg F)	Annotation
0	1780.64	96.10	Initial Hydro-static
1	17.64	95.44	Open To Flow (1)
34	23.24	98.43	Shut-In(1)
76	995.06	100.56	End Shut-In(1)
77	15.47	100.34	Open To Flow (2)
120	23.79	101.59	Shut-In(2)
182	1020.85	103.48	End Shut-In(2)
183	1764.11	103.61	Final Hydro-static

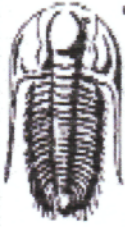
Recovery

Length (ft)	Description	Volume (bbl)
0.00	175 ft.of GIP	0.00
5.00	Clean oil	0.07
28.00	GOCM 14%g 36% o 50%m	0.39

* Recovery from multiple tests

Gas Rates

	Choke (inches)	Pressure (psig)	Gas Rate (Mcf/d)



**TRILOBITE
TESTING, INC**

DRILL STEM TEST REPORT

Mai Oil Operations Inc.
8411 Preston Rd. Ste.800
Dallas TX .75225
ATTN: Wyatt Urban

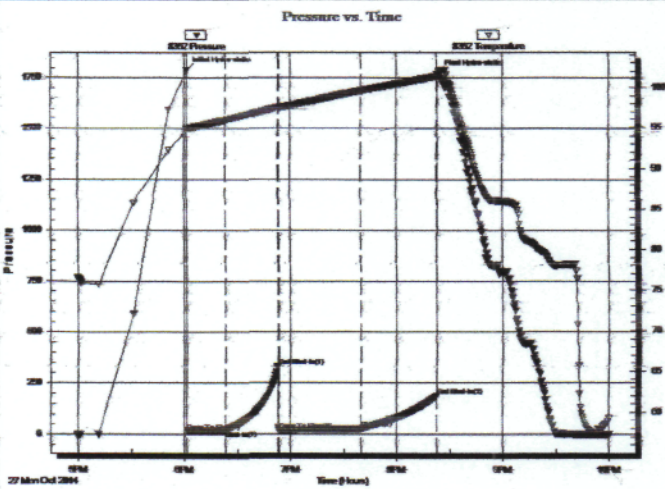
22-21s-12w Stafford,KS
Long A #3
Job Ticket: 57867 **DST#: 6**
Test Start: 2014.10.27 @ 16:59:20

GENERAL INFORMATION:

Formation: **Arbuckle**
Deviated: No Whipstock: ft (KB)
Time Tool Opened: 18:01:35
Time Test Ended: 22:00:20
Interval: **3593.00 ft (KB) To 3604.00 ft (KB) (TVD)**
Total Depth: 3604.00 ft (KB) (TVD)
Hole Diameter: 7.88 inches Hole Condition: Fair
Test Type: Conventional Bottom Hole (Reset)
Tester: Gary Pevoteaux
Unit No: 56
Reference Elevations: 1846.00 ft (KB)
1838.00 ft (CF)
KB to GR/CF: 8.00 ft

Serial #: 8352 Outside
Press@RunDepth: 26.99 psig @ 3594.00 ft (KB) Capacity: 8000.00 psig
Start Date: 2014.10.27 End Date: 2014.10.27 Last Calib.: 2014.10.27
Start Time: 16:59:25 End Time: 22:00:19 Time On Btm: 2014.10.27 @ 18:01:20
Time Off Btm: 2014.10.27 @ 20:23:35

TEST COMMENT: F:Fair blow . Increase to 11".
IS:No blow .
FF:Fair to strong blow . B.O.B. in 39 mins.
FS:No blow .



PRESSURE SUMMARY

Time (Min.)	Pressure (psig)	Temp (deg F)	Annotation
0	1789.22	94.66	Initial Hydro-static
1	16.50	94.84	Open To Flow (1)
22	20.45	95.91	Shut-In(1)
52	328.88	97.55	End Shut-In(1)
52	18.90	97.45	Open To Flow (2)
99	26.99	99.57	Shut-In(2)
142	186.31	101.31	End Shut-In(2)
143	1769.47	101.62	Final Hydro-static

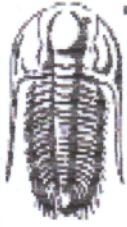
Recovery

Length (ft)	Description	Volume (bbl)
0.00	945 ft. of GIP	0.00
10.00	Clean oil	0.14
10.00	HOCM 35%o 65%m	0.14

* Recovery from multiple tests

Gas Rates

	Choke (inches)	Pressure (psig)	Gas Rate (Mcf/d)



TRILOBITE TESTING, INC

DRILL STEM TEST REPORT

Mai Oil Operations Inc.
 8411 Preston Rd. Ste.800
 Dallas TX .75225
 ATTN: Wyatt Urban

22-21s-12w Stafford,KS
Long A #3
 Job Ticket: 57868 **DST#: 7**
 Test Start: 2014.10.28 @ 03:43:53

GENERAL INFORMATION:

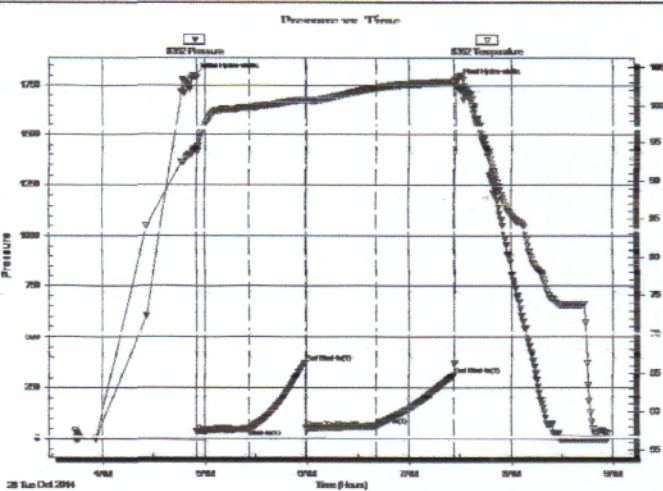
Formation: **Arbuckle**
 Deviated: No Whipstock: ft (KB)
 Time Test Opened: 04:55:23
 Time Test Ended: 08:56:53
 Interval: **3593.00 ft (KB) To 3619.00 ft (KB) (TVD)**
 Total Depth: **3610.00 ft (KB) (TVD)**
 Hole Diameter: **7.88 inches** Hole Condition: Fair
 Test Type: Conventional Bottom Hole (Reset)
 Tester: Gary Bayoteaux
 Unit No: 56
 Reference Elevations: 1846.00 ft (KB)
 1933.00 ft (CF)
 KB to GR/CF: 8.00 ft

Serial #: 8352

Outside

Press@RunDepth: 64.33 psig @ 3594.00 ft (KB) Capacity: 8000.00 psig
 Start Date: 2014.10.28 End Date: 2014.10.28 Last Calib.: 2014.10.28
 Start Time: 03:43:58 End Time: 08:56:52 Time On Btm: 2014.10.28 @ 04:54:08
 Time Off Btm: 2014.10.28 @ 07:26:06

TEST COMMENT: F:Strong blow . B.O.B. in 12 mins.
 IS:Weak blow . (surface)
 FF:Strong blow . B.O.B. in 12 - 13 mins.
 FS:Weak blow . 1/4".



PRESSURE SUMMARY

Time (Min.)	Pressure (psig)	Temp (deg F)	Annotation
0	1796.09	94.12	Initial Hydro-static
2	35.25	93.85	Open To Flow (1)
32	49.03	99.68	Shut-In(1)
65	375.64	100.71	End Shut-In(1)
66	50.40	100.02	Open To Flow (2)
107	64.33	102.30	Shut-In(2)
153	313.03	103.07	End Shut-In(2)
154	1766.47	103.63	Final Hydro-static

Recovery

Length (ft)	Description	Volume (bbl)
0.00	730 ft of GIP	0.00
35.00	Clean Oil	0.49
60.00	GOCM 15%g 30%o 55%m	0.84

* Recovery from multiple tests

Gas Rates

	Choke (Inches)	Pressure (psig)	Gas Rate (Mcf/d)



TRILOBITE TESTING, INC

DRILL STEM TEST REPORT

Mai Oil Operations Inc.
 8411 Preston Rd. Ste.800
 Dallas TX .75225
 ATTN: Wyatt Urban

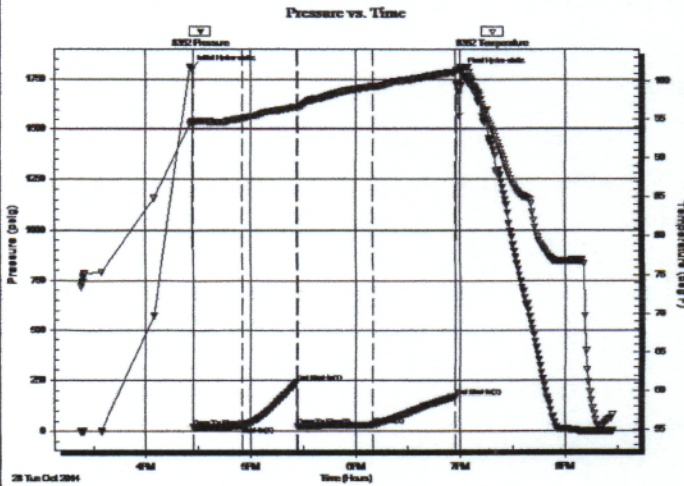
22-21s-12w Stafford,KS
Long A #3
 Job Ticket: 57869 **DST#: 8**
 Test Start: 2014.10.28 @ 15:22:40

GENERAL INFORMATION:

Formation: **Arbuckle**
 Deviated: No Whipstock: ft (KB)
 Time Tool Opened: 16:27:10
 Time Test Ended: 20:27:25
 Interval: **3620.00 ft (KB) To 368.00 ft (KB) (TVD)**
 Total Depth: 3638.00 ft (KB) (TVD)
 Hole Diameter: 7.88 inches Hole Condition: Poor
 Test Type: Conventional Bottom Hole (Reset)
 Tester: Gary Pevoteaux
 Unit No: 56
 Reference Elevations: 1846.00 ft (KB)
 1838.00 ft (CF)
 KB to GR/CF: 8.00 ft

Serial #: 8352 Outside
 Press@RunDepth: 30.48 psig @ 3621.00 ft (KB) Capacity: 8000.00 psig
 Start Date: 2014.10.28 End Date: 2014.10.28 Last Calib.: 2014.10.28
 Start Time: 15:22:45 End Time: 20:27:24 Time On Btm: 2014.10.28 @ 16:25:55
 Time Off Btm: 2014.10.28 @ 19:00:55

TEST COMMENT: F:Fair blow . Increase to 9 1/2".
 IS:No blow .
 FF:Weak to fair blow . Increase to 5 1/2".
 FS:No blow .



PRESSURE SUMMARY

Time (Min.)	Pressure (psig)	Temp (deg F)	Annotation
0	1802.63	94.64	Initial Hydro-static
2	21.21	94.39	Open To Flow (1)
30	23.84	95.15	Shut-In(1)
61	239.37	96.74	End Shut-In(1)
61	23.24	96.69	Open To Flow (2)
104	30.48	99.32	Shut-In(2)
152	168.06	101.16	End Shut-In(2)
155	1789.08	101.78	Final Hydro-static

Recovery

Length (ft)	Description	Volume (bbl)
0.00	190 ft.of GIP	0.00
8.00	Clean oil	0.11
24.00	HOCM 31%o 69%m	0.34

* Recovery from multiple tests

Gas Rates

	Choke (inches)	Pressure (psig)	Gas Rate (Mcf/d)

QUALITY OILWELL CEMENTING, INC.

Federal Tax I.D.# 20-2886107

Phone 785-483-2025
Cell 785-324-1041

Home Office P.O. Box 32 Russell, KS 67665

No. 773

Date	10-22-14	Sec.	22	Twp.	21	Range	12	County	Hoffman	State	KS	On Location	6:45pm	Finish	9:00pm
Lease								Location		Great Bend KS to 170RD					
Long A								Well No.		3					
Contractor								Owner		To Quality Oilwell Cementing, Inc. You are hereby requested to rent cementing equipment and furnish cementer and helper to assist owner or contractor to do work as listed.					
South Wind 3								Charge To		Mabil					
Type Job								Street							
Surface								City		State					
Hole Size								Depth		The above was done to satisfaction and supervision of owner agent or contractor.					
12 1/4								341							
Csg.								Cement Amount Ordered		400 6940					
8 5/8								343.11							
Tbg. Size								Cement Left in Csg.		30ft					
								Shoe Joint		30ft					
Tool								Meas Line		38.5 BBL					
								Displace		39% 2% gel 1/2 flow					
								EQUIPMENT		Common					
Pumptrk								No.		Cementer					
20								1		Helper					
Bulktrk								No.		Driver					
4								1		Driver					
Bulktrk								No.		Driver					
pu								1		Driver					
								JOB SERVICES & REMARKS		Hulls					
Remarks:										Salt					
Rat Hole										Flowseal					
Mouse Hole										Kol-Seal					
Centralizers										Mud CLR 48					
Baskets										CFL-117 or CD110 CAF 38					
D/V or Port Collar										Sand					
Cement + did										Handling					
Cultrate										Mileage					
										FLOAT EQUIPMENT					
										Guide Shoe					
										Centralizer					
										Baskets					
										AFU Inserts					
										Float Shoe					
										Latch Down					
										Pumptrk Charge					
										Mileage					
										Tax					
										Discount					
										Total Charge					
Signature										Jay Klein					

QUALITY OILWELL CEMENTING, INC.

Federal Tax I.D.# 20-2886107

Phone 785-483-2025

Home Office P.O. Box 32 Russell, KS 67665

No. 868

Cell 785-324-1041

Date	10-29-14	Sec.	22	Twp.	21	Range	12	County	Stafford	State	KS	On Location		Finish	5 WPM
Location													Great Bend 115 to 170rd 7E 1/4N Winto		

Lease	Long A	Well No.	3	Owner	To Quality Oilwell Cementing, Inc. You are hereby requested to rent cementing equipment and furnish cementer and helper to assist owner or contractor to do work as listed.
Contractor	Sutherland		3	Charge To	Major oil operations
Type Job	Production			Street	
Hole Size	7 7/8	T.D.	3693	City	State
Csg.	5 1/2 14" New	Depth	3692	The above was done to satisfaction and supervision of owner agent or contractor.	
Tbg. Size		Depth		Cement Amount Ordered 160s, 6 3/4 10% 10% 1/2 2 1/2 ge	
Tool		Depth		Meas Line Displace 89 1/2 ss 1 1/16 Flow seal	
Cement Left in Csg.	19.34	Shoe Joint	19.34	EQUIPMENT	

EQUIPMENT		Common
Pumptrk 16 No.	Cementer Billy	Poz. Mix
	Helper	
Bulktrk 3 No.	Driver Lonnie M	Gel.
	Driver	
Bulktrk Pu No.	Driver Fick	Calcium
	Driver	

JOB SERVICES & REMARKS		Hulls
Remarks:		Salt
Rat Hole	30sx	Flowseal
Mouse Hole		Kol-Seal
Centralizers	1-10 12-15	Mud CLR 48
Baskets		CFL-117 or CD110 CAF 38
D/V or Port Collar		Sand
Pipe on bottom make circulation		Handling
Pump 1000 gal mud clear Plug Rat hole w/ 30sx Hooked to 5 1/2 csg pump		Mileage
130sx cement, blink down, unhooked		FLOAT EQUIPMENT
Washed Pump and Lines 1000 released		Guide Shoe
Plug displaced w/ 89 1/2 ss water, released and plug held.		Centralizer 14 turbos
Left PSI - 500		Baskets
Plug landed PSI 1500		AFU Inserts
		Float Shoe
		Latch Down
		1,000 gal mud clear
		Pumptrk Charge
		Mileage

X Signature *[Signature]*

Tax
Discount
Total Charge