



Scale 1:240 (5"=100') Imperial
Measured Depth Log

Well Name: MELANLE #1
 API: 15-141-20470-00-00
 Location: SW SE NE SECTION 13 30S 8W
 License Number: 5663
 Spud Date: 9/3/2014
 Surface Coordinates: 2136' FROM SOUTH LINE OF SECTION
 1720' FROM EAST LINE OF SECTION
 Bottom Hole Coordinates: 2136' FROM SOUTH LINE OF SECTION
 1720' FROM EAST LINE OF SECTION
 Ground Elevation (ft): 1744'
 Logged Interval (ft): 631' To: 3635' K.B. Elevation (ft): 1749'
 Formation: MISSISSIPPI
 Type of Drilling Fluid: CHEMICAL MUD-CO
 Region: OSBORN CO. KS.
 Drilling Completed:

Printed by WellSight Log Viewer from WellSight Systems 1-800-447-1534 www.WellSight.com

OPERATOR

Company: HESS OIL COMPANY
 Address: PO BOX 1009
 MCPHERSON, KANSAS 67460-1009
 (620) 241-4640

GEOLOGIST

Name: DAVID GOULD (LOGGER)
 Company: DMT COMPANY
 Address: 532 SUNRISE
 PRATT, KANSAS 67124
 (620) 388-2847

Comments

CONTRACTOR:

MALLARD DRILLING

BIT RECORD:

A, 12 1/4, RR, RT, 0-217'
 #1, 7 7/8, F27, RR, 217-1823'
 #3 7 7/8, F27, RR, 1823-3635

SURVEYS:

217' 3/4 DEGREE
 3036' 1 DEGREE
 3635' 1 1/2 DEGREE

DAILY STATUS: (6:00 AM)

9/3/2014 MOVE IN, SPUD @ 5:00 PM, DRILL TO 217' SET 8 5/8 CASING
 9/4/2014, WOC @ 217'
 9/5/2014, DRILLING AHEAD @ 1418'
 9/6/2014, DRILLING AHEAD @ 1896'
 9/7/2014, DRILLING AHEAD @ 2650'
 9/8/2014, DRILLED TO 3036, DST #1
 9/9/2014, DRILLING AHEAD 3287'
 9/10/2014, DRILLED TO TD @ 3687 RAN LOGS AND PLUGGED WELL

Well Name & No.: Melanle #1 Company: Hess Oil Test No.: 1 Interval Tested: 2947 - 3036

Zone Tested: Lansing Times: 45-45-45-45

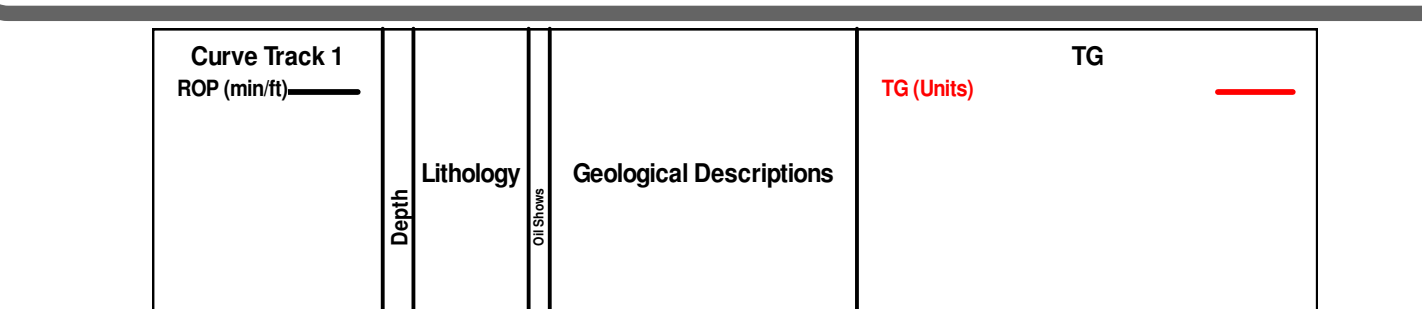
Blow Description: IFF: 1" Blow ISI: No Blow FFP: Weak Surface Blow FSI: No Blow

Rec: 210 Feet of Mud Rec. Total: 210', BHT: 103 Gravity: N/A

Initial Hydrostatic: 1,460 First Initial Flow: 87 First Final Flow: 103 Initial Shut-In: 1,084

Second Initial Flow: 116 Second Final Flow: 130 Final Shut-In: 1,043 Final Hydrostatic: 1,428

Pressure vs. Time



Gauge 8957: Displaying every 3 points.

- | | | | | | | | | | | | | | | | | | | |
|------|------|-----|-------|------|-------|-----|-----|------|------|------|-------|------|-------|-------|------|--------|----|------|
| Anhy | Bent | Cht | Clyst | Coal | Congl | Dol | Gyp | Igne | Lmst | Meta | Mrlst | Salt | Shale | Shool | Shgy | Siltst | Ss | Till |
|------|------|-----|-------|------|-------|-----|-----|------|------|------|-------|------|-------|-------|------|--------|----|------|

ROCK TYPES

