



Scale 1:240 (5"=100') Imperial
Measured Depth Log

Well Name: PIKE #1
 API: 15-141-20471-00-00
 Location: SW NE SW SW
 License Number: 5663
 Spud Date: 9/16/2014
 Surface Coordinates: 934' FROM SOUTH LINE OF SECTION 970' FROM WEST LINE OF SECTION
 Bottom Hole Coordinates: 934' FROM SOUTH LINE OF SECTION 970' FROM WEST LINE OF SECTION
 Ground Elevation (ft): 1740' K.B. Elevation (ft): 1745'
 Logged Interval (ft): 1500' To: 4115 Total Depth (ft): 4115
 Formation: ARB
 Type of Drilling Fluid: CHEMICAL, MUD-CO
 Region: OSBORNE CO. KS.
 Drilling Completed: 9/23/2014

Printed by WellSight Log Viewer from WellSight Systems 1-800-447-1534 www.WellSight.com

OPERATOR

Company: HESS OIL COMPANY
 Address: PO BOX 1009
 MCPHERSON, KANSAS 67460-1009
 (620) 241-4640

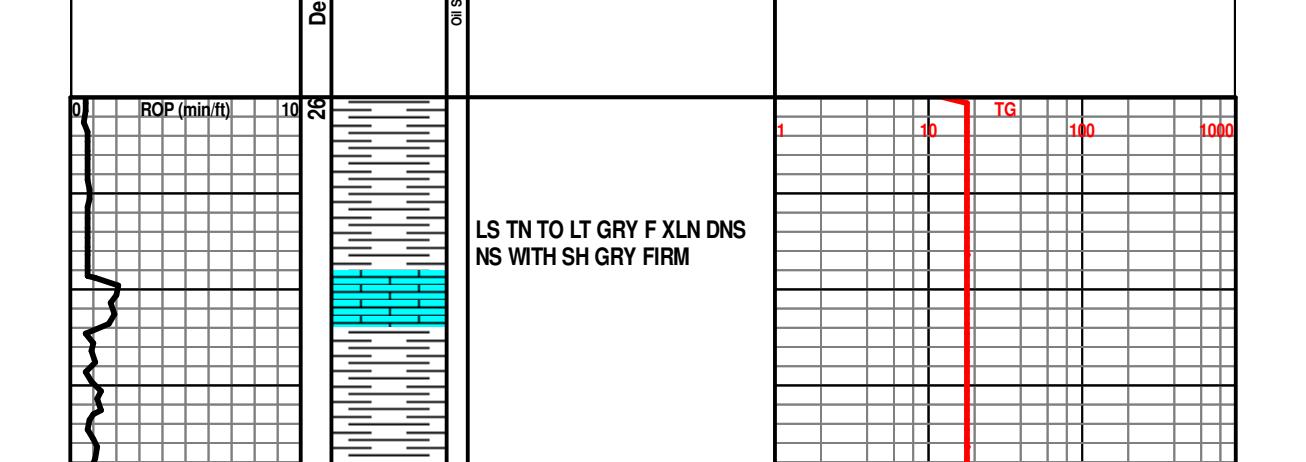
GEOLOGIST

Name: DAVID GOULD (LOGGER)
 Company: DMT COMPANY
 Address: 532 SUNRISE
 PRATT, KANSAS 67124
 (620) 388-2847

Comments

CONTRACTOR: MALLARD DRILLING
 BIT RECORD:
 #A, 12 1/4, RR, RT, 0-217
 #1, 7 7/8, F27, RD 1788, 217-4115
 SURVEYS:
 217 MISRUN
 2954 3/4 DEGREE
 DAILY STATUS: (7:00 AM)
 9/16/2014, MOVE RIG IN, SPUD @ 4:40 PM, DRILLED TO 217', SET 8 5/8
 9/17/2014, DRILLING @ 280'
 9/18/2014, DRILLING @ 1698'
 9/19/2014, DRILLING @ 2550'
 9/20/2014, 2954, TEST #1
 9/21/2014, DRILLING @ 3246
 9/22/2014, DRILLING @ 3692
 9/23/2014, CFS @ 4115' FOR LOGS

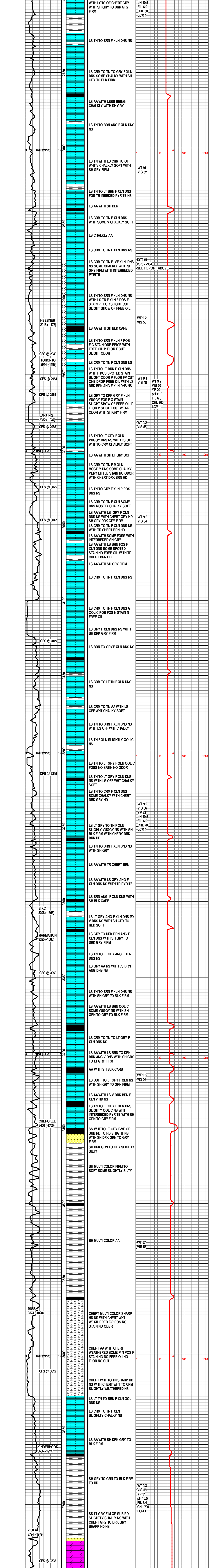
Well Name & No.: Pike #1 Company: Hess Oil Co. Test No.: 1 Interval Tested: 2876 - 2954
 Zone Tested: Toronto Times: 30-45-30-45
 Blow Description: IFP: BOB in 9 Min. ISI: No blow back FFP: BOB in 20 Min. FSI: No blow back
 Rec: 248 Feet of VSMCW 98% Water 2% Mud, 120 Feet of MCW 70% Water 30% Mud, 100 Feet of Mud with Oil Spots 100% Mud, Rec. Total: 468', BHT: 101 Gravity: N/A
 Initial Hydrostatic: 1423 First Initial Flow: 52 First Final Flow: 175 Initial Shut-In: 1113
 Second Initial Flow: 190 Second Final Flow: 244 Final Shut-In: 1096 Final Hydrostatic: 1479



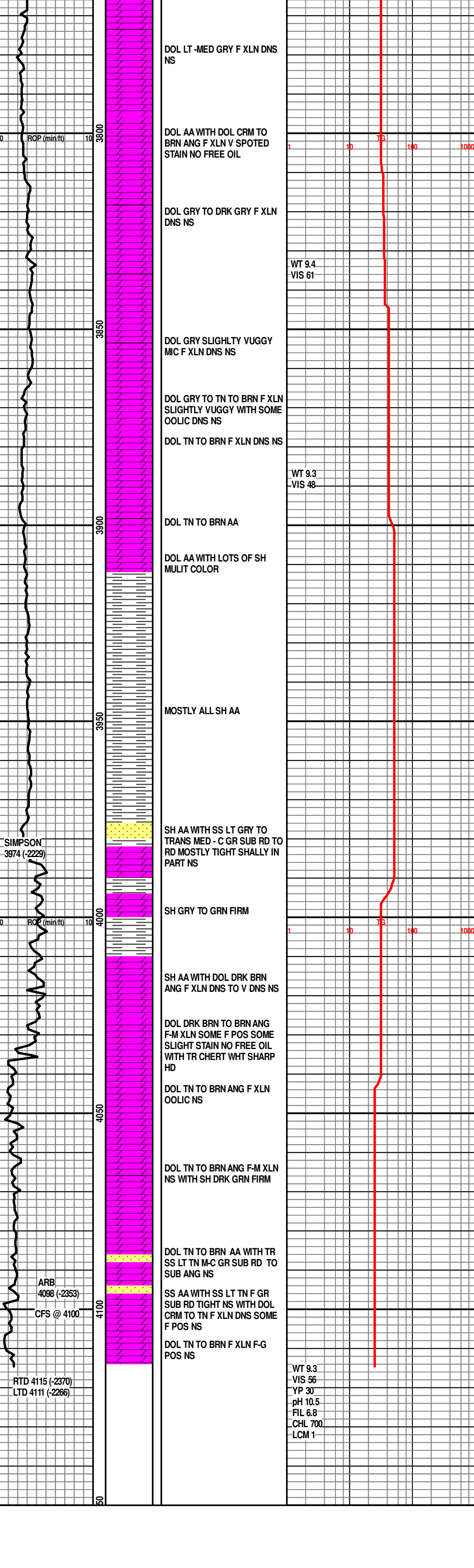
Pressure (psig) vs. Time (Hours) vs. Temperature (deg F). Gauge 8897: Displaying every 4 points.

ROCK TYPES

Anhy	Clyst	Gyp	Mrlst	Shgy
Bent	Coal	Igne	Salt	Siltst
Brec	Congl	Lmst	Shale	Ss
Cht	Dol	Meta	Shcol	Till



ROP (min/ft) vs. Depth (ft) vs. Geological Descriptions vs. TG (Units)



DOL LT -MED GR Y F XLN DNS NS
 DOL AA WITH DOL CRM TO BRN ANG F XLN V SPOTED STAIN NO FREE OIL
 DOL GR Y TO DRK GR Y F XLN DNS NS
 DOL GR Y SLIGHTLY VUGGY MIC F XLN DNS NS
 DOL GR Y TO TN TO BRN F XLN SLIGHTLY VUGGY WITH SOME OOLIC DNS NS
 DOL TN TO BRN F XLN DNS NS
 DOL TN TO BRN AA
 DOL AA WITH LOTS OF SH MULT COLOR
 MOSTLY ALL SH AA
 SH AA WITH SS LT GR Y TO TRANS MED - C GR SUB RD TO RD MOSTLY TIGHT SHALLY IN PART NS
 SH GR Y TO GRN FIRM
 SH AA WITH DOL DRK BRN ANG F XLN DNS TO V DNS NS
 DOL DRK BRN TO BRN ANG F-M XLN SOME F POS SOME SLIGHT STAIN NO FREE OIL WITH TR CHERT WHT SHARP HD
 DOL TN TO BRN ANG F XLN OOLIC NS
 DOL TN TO BRN ANG F-M XLN NS WITH SH DRK GRN FIRM
 DOL TN TO BRN AA WITH TR SS LT TN MC GR SUB RD TO SUB ANG NS
 SS AA WITH SS LT TN F GR SUB RD TIGHT NS WITH DOL CRM TO TN F XLN DNS SOME F POS NS
 DOL TN TO BRN F XLN F-G POS NS

WT 9.4
 VIS 61
 WT 9.3
 VIS 48
 WT 9.3
 VIS 56
 YP 30
 pH 10.5
 FIL 6.8
 CHL 700
 LCM 1

SIMPSON
 3974 (2229)
 ARB
 4088 (2353)
 CFS @ 4100
 RTD 4115 (2370)
 LTD 4111 (2269)