

LINN OPERATING INC. MYERS A-4 ATU-16

200' FNL
 200' FEL
 NE/4 OF NE/4 OF NE/4 OF
 SECTION 7, T-28-S, R-38-W, GRANT CO., KS.
 LATITUDE: 37°38'03.06352" N
 LONGITUDE: 101°30'32.14577" W
 GROUND ELEVATION: 3127.9'



Keller
 Surveying &
 Mapping

2330 B LAKEVIEW DRIVE
 AMARILLO, TEXAS 79109
 PH (806) 410 5253

DRAWN BY: DMI

APPROVED BY: JWK

SCALE 1" = 200'

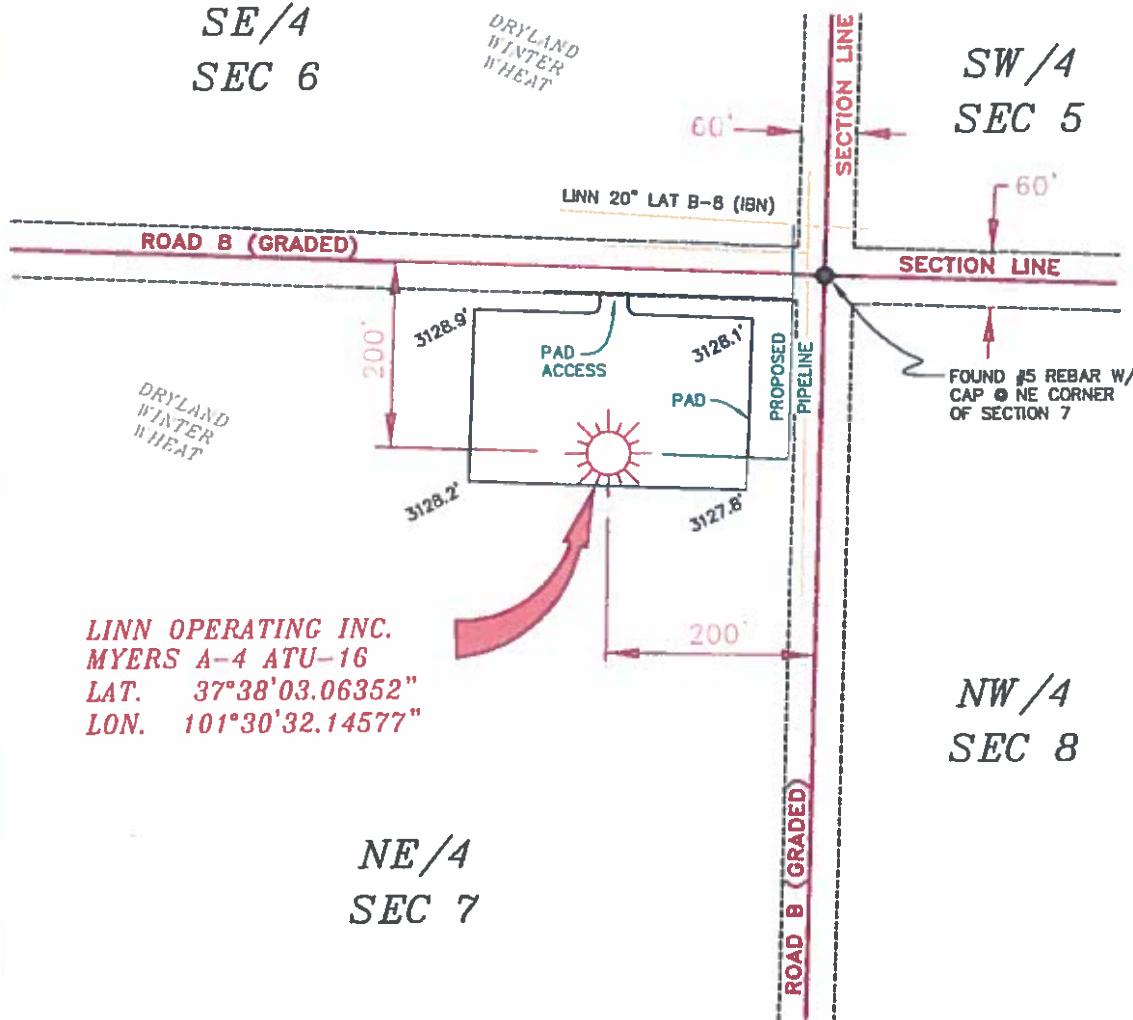
DATE 10/22/14

LINN
 Energy

2225 W OKLAHOMA AVE.
 ULYSSES, KANSAS 67880
 PH: (620) 356-6940
 FAX: (620) 356-6950

DRIVING DIRECTIONS:

- BEGINNING AT INTERSECTION OF US HWY 160 & HWY 25
- 1) 8 MILES WEST ON HWY 160
- 2) 4 MILES NORTH ON ROAD B

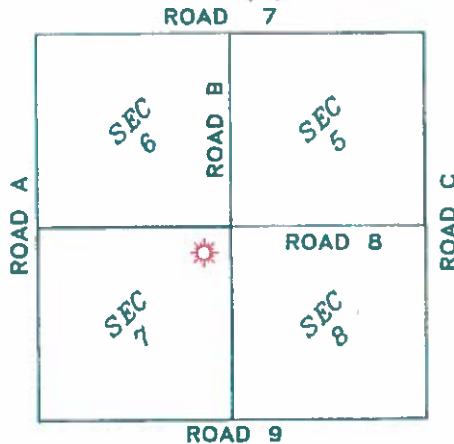


LINN OPERATING INC.
 MYERS A-4 ATU-16
 LAT. 37°38'03.06352"
 LON. 101°30'32.14577"

NE/4
SEC 7

NW/4
SEC 8

- NOTES:**
- 1) THIS PLAN DOES NOT REPRESENT A TRUE BOUNDARY SURVEY. THE BOUNDARIES AND LINES SHOWN ARE FROM LINES OF OCCUPATION WHICH MAY NOT BE ACTUAL PROPERTY LINES.
 - 2) CONTRACTOR TO CONTACT OIG-CALL FOR FERC CY UTILITY LOCATIONS PRIOR TO ANY EXCAVATION OR CONSTRUCTION.
 - 3) MAY 27 UN-10165



T-28-S, R-38-W
 GRANT COUNTY, KANSAS

LINN OPERATING INC.
MYERS A-4 ATU-16
 SEC. 5, 6, 7 & 8, T-28-S, R-38-W,
 GRANT COUNTY, KANSAS



JOHN DAVID KELLER, L.S. NO. 1518

Sheet 1 of 2

PLAT AND CERTIFICATION OF ACREAGE ATTRIBUTABLE TO A GAS WELL

Kansas Corporation Commission, Conservation Division
Finney State Office Building, 130 South Market, Room 2078
Wichita, Kansas 67202

API NUMBER 15- _____

LOCATION OF WELL: COUNTY Grant _____

OPERATOR Linn Operating, Inc. _____

200 N feet from south/north line of section

LEASE Myers _____

200 E feet from east / west line of section

WELL NUMBER A-4 ATU-16 _____

FIELD Hugoton-Panoma _____

SECTION 7 TWP 28S (S) RG 38W E/W

NUMBER OF ACRES ATTRIBUTABLE TO WELL 640

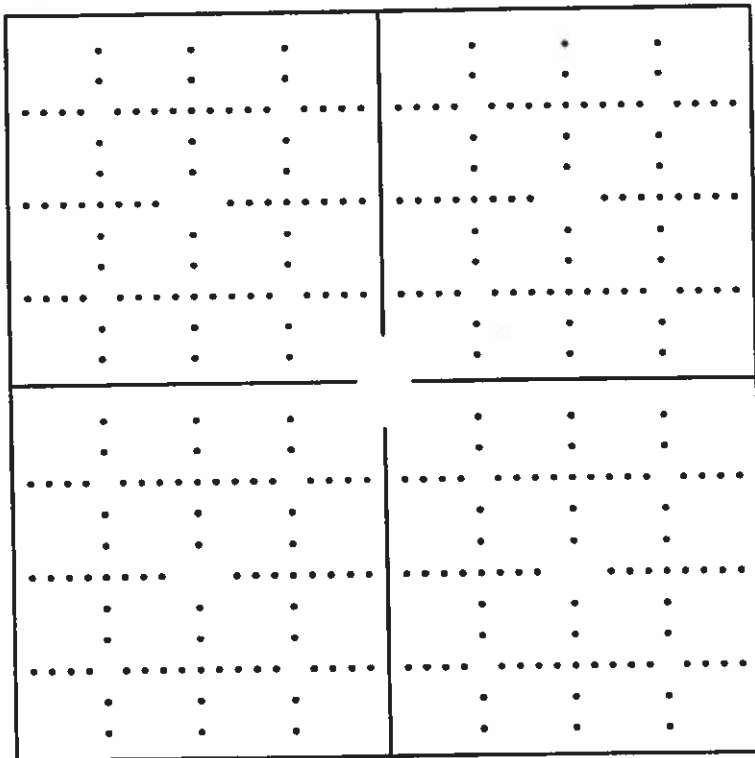
IS SECTION X REGULAR or IRREGULAR

QTR/QTR/QTR OF ACREAGE NE - NE - NE

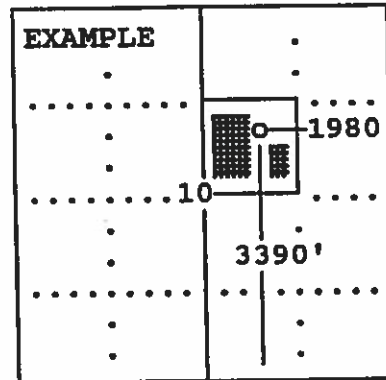
IF SECTION IS IRREGULAR, LOCATE WELL FROM NEAREST CORNER BOUNDARY. (check line below)

Section corner used: NE NW SE SW

(Show the location of the well and shade attributable acreage for prorated or spaced wells).
(Show the footage to the nearest lease or unit boundary line; and show footage to the nearest common source supply well).



see attached map



SEWARD CO.

The undersigned hereby certifies as Regulatory Compliance Advisor (title) for Linn Operating, Inc. (Co.), a duly authorized agent, that all

information shown hereon is true and correct to the best of my knowledge and belief, that all acreage claimed attributable to the well named herein is held by production from that well and hereby make application for an allowable to be assigned to the well upon the filing of this form and the State test, whichever is later.

Signature [Handwritten Signature]

Subscribed and sworn to before me on this 8th day of January, 19 2015

[Handwritten Signature]

Notary Public

FORM CG-8 (12/94)

My Commission expires



MINDY POTER
Notary Public, State of Texas
Commission Expires 02-19-2017

LINN OPERATING INC
O.P. WILLIAMS GU 3H1
CHASE 1
TD 2,874

LINN OPERATING INC
WILSON GU A-2
COUNCIL GROVE 1
TD 2,868

LINN OPERATING INC
WILSON GU A-3H1
CHASE 1
TD 2,858

6 LINN OPERATING INC
WILLIAMS A-1
CHASE 1
TD 2,580

5

LINN OPERATING INC
WILSON GU 1
CHASE 1
TD 2,850

LINN OPERATING INC
O.P. WILLIAMS 2
COUNCIL GROVE 1
TD 2,871

WILSON A-4

ATU WELL

28S 38W

LINN OPERATING INC
MYERS A-3H1
CHASE 1
TD 2,584

LINN OPERATING INC
A.G. DYCK 2
COUNCIL GROVE 1
TD 2,858

7

LINN OPERATING INC
MYERS 1
CHASE 1
TD 2,540

8

LINN OPERATING INC
A.G. DYCK 1
CHASE 1
TD 2,847

LINN OPERATING INC
R.P. PINEGAR GU B-1
COUNCIL GROVE 1
TD 8,903

LINN OPERATING INC
A.G. DYCK GU 3H1
CHASE 1
TD 2,863

PETRA 12/5/2012 8:42:21 AM

LINN OPERATING INC

KANSAS HUGOTON

ATU LOCATION

Sec 8 - 28S - 38W Grant Co.

0 1,450
FEET

WELL SYMBOLS
ABANDONED LOCATION
ATU Well Location
Gas Well

December 5, 2012