

COMPANY: PICKERELL DRILLING COMPANY, INC.
 LEASE: #3 MAPLE "K"
 LOCATION: C-NE-SE
 COUNTY: KINGMAN
 STATE: KANSAS

FIELD: SPIVEY-GRASS-BASIL
 LOCATION: C-NE-SE
 SEC. 30 TWP. 29 RGE. 6 W
 COUNTY: KINGMAN STATE: KANSAS
 CONTRACTOR: COMPANY TOOLS, RIG #1
 RPT. 4230
 MUD W.P.: 3485
 MUD U.P.: 3485
 MUD C.P.: 3485
 MUD TYPE: MUD CHEMICAL
 API No. 14-095-22281

DRILLING TIME KEPT FROM: 2800
 SAMPLES EXAMINED FROM: 2800
 GEOLOGICAL SUPERVISOR FROM: 3080
 GEOLOGIST ON WELL: JERRY A. SMITH

FORMATION TOPS LOG
 HEEBNER 3082 (1533)
 LANSING 3312 (1733)
 STARK 3736 (2207)
 MISSISSIPPIAN 4138 (2639)
 MISS. "CHAT" 4152 (2623)

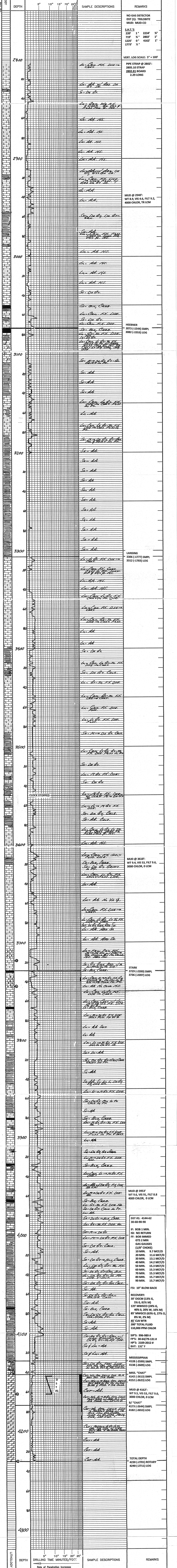
ELEVATIONS
 K.B. 1529
 D.E. 1527
 G.L. 1519
 Measurements Are All From:
 KB
 CASING

TO: RTD
 TO: RTD
 TO: RTD

TO: RTD
 TO: RTD
 TO: RTD

TO: RTD
 TO: RTD
 TO: RTD

FIELD: SPIVEY-GRASS-BASIL	LOCATION: C-NE-SE	SEC. 30	TWP. 29	RGE. 6 W
COUNTY: KINGMAN	STATE: KANSAS			
CONTRACTOR: COMPANY TOOLS, RIG #1	RPT. 4230			
MUD W.P.: 3485	MUD U.P.: 3485			
MUD C.P.: 3485	MUD TYPE: MUD CHEMICAL			
API No. 14-095-22281				
DRILLING TIME KEPT FROM: 2800	SAMPLES EXAMINED FROM: 2800			
GEOLOGICAL SUPERVISOR FROM: 3080	GEOLOGIST ON WELL: JERRY A. SMITH			
FORMATION TOPS LOG	HEEBNER 3082 (1533)	LANSING 3312 (1733)	STARK 3736 (2207)	MISSISSIPPIAN 4138 (2639)
MISS. "CHAT" 4152 (2623)				



COMPANY: PICKERELL DRILLING COMPANY, INC.	ELEVATION: 1529 KB
LEASE: #3 MAPLE "K"	
LOCATION: C-NE-SE	SEC 30 TWP 29 RGE 6 W
COUNTY: KINGMAN	STATE: KANSAS