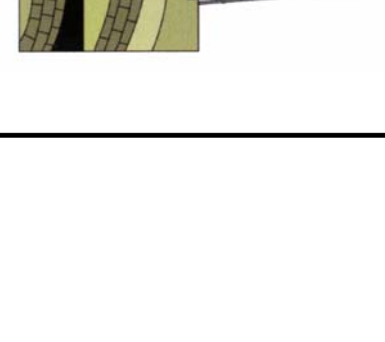


Noble Petroleum, Inc.

GEOLOGICAL REPORT DRILLING TIME & SAMPLE LOG

REPORT PREPARED BY FRANK S. MIZE/GEOLOGIST
API #: 15-115-21846

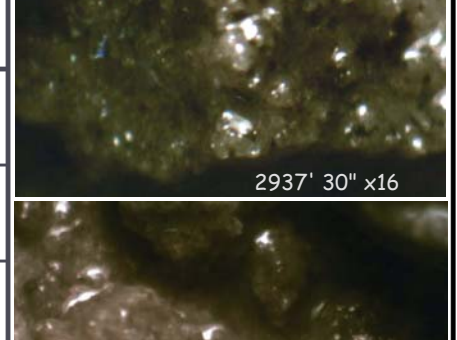
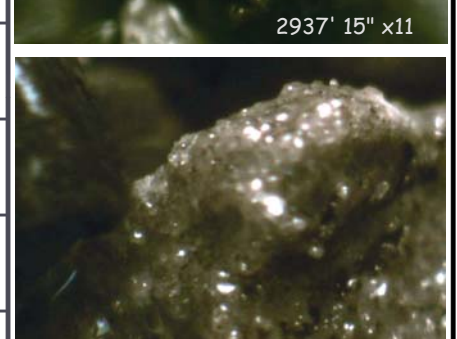
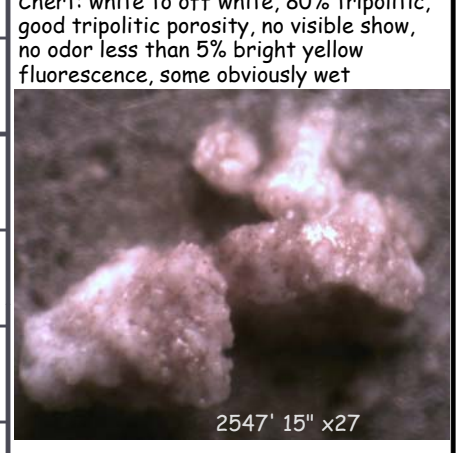


COMPANY	Noble Petroleum, Inc.	ELEVATION	K.B. 1382
LEASE	Scully #1	D.F.	
FIELD	Durham East	G.L.	1373
LOCATION	1,540 FSL & 330' FEL	DEPTH MEASURED FROM KB	
SEC	33 TWP 18S RGE 2E	Log	Drilling <input checked="" type="checkbox"/>
COUNTY	Marion STATE Kansas	Surface	8.5/8" @ 297' w/ 40SS
CONTRACTOR	C & G Drilling	Production	NONE
SPUD	9-30-14 COMP 10-05-14	Electric Logs	NONE
SAMPLES SAVED FROM	2500' TO RTD		
REPORT PREPARED BY	FRANK S. MIZE/GEOLOGIST		
FORMATION	SAMPLE	E LOG	DATE/TIME
		A.	B.
			C.

FORMATION	SAMPLE	E LOG	DATE/TIME
Pawnee	2410		-1028
Mississippian	2532		-1150
Gilmore City	2642		-1260
Kinderhook	2701		-1319
Hunter	MSG		-1522.5
Viola	2934.5		-1522.5
Simmons SS			-1630
Abundant			-1694

FORMATION	DESCRIPTION	DRILLING TIME (MINUTES/FOOT)
2400	Shale: vari-colored	
2450	Limestone: mottled gray, fine to medium crystalline, poor intercrystalline porosity, no show, much vari-colored shale Limestone: gray to light brown, fine to medium crystalline, dense, no visible porosity, no show much vari-colored shale Limestone: gray to light brown, fine to medium crystalline, dense, trace off white oolitic, oolitic, no visible porosity, no show, much vari-colored shale Shale: vari-colored Limestone: brown, fine to medium crystalline, dense, no visible porosity, much gray shale Shale: vari-colored Shale: red to gray Limestone: beige to light gray, medium to coarsely crystalline, dense, no visible porosity, no show, much gray to red shale	
2500	Shale: red to dark gray Shale: red to gray to dark gray Shale: red to gray to dark gray Shale: red to gray to olive yellow Conglomerate: mostly shale, w/cherty sandstone, some fresh mottled off white chert	
2550	Chert: mottled off white, fresh, sharp, trace arenaceous, trace very poor intergranular porosity, no show Chert: white to off white, 50% tripolitic, fair to good tripolitic porosity, very slight show free oil, faint odor, & trace gas bubbles in 15" sample, 20% bright yellow fluorescence Chert: white to off white, nearly all tripolitic, fair to good tripolitic porosity, no show Chert: white to off white, nearly all tripolitic, fair to good tripolitic porosity, no show Chert: white to off white, most tripolitic, about 20% fresh, fair to good tripolitic porosity, no show Chert: white to off white, most tripolitic, about 25% fresh, fair to good tripolitic porosity, no show Chert: white to off white, most tripolitic, fair to good tripolitic porosity, no show, about 50% banded gray to white, fresh, with no porosity, no show Chert: white to off white to gray, most fresh, trace tripolitic, poor tripolitic porosity, no show Chert: white to off white to gray, most fresh, trace tripolitic, poor tripolitic porosity; trace white, fine to medium crystalline dolomite, no show Chert: white to off white to gray, most fresh, trace tripolitic, poor tripolitic porosity; trace white, fine to medium crystalline dolomite, no show Chert: white to off white to gray, most fresh, trace tripolitic, poor tripolitic porosity; trace white, fine to medium crystalline dolomite, no show Shale: red to gray to mustard yellow	
2600	Limestone: gray, medium crystalline, slightly dolomitic, dense, no porosity, no show Limestone: gray, medium crystalline, slightly dolomitic, dense, no porosity, no show Limestone: dirty gray to light brown, medium crystalline, no visible porosity, no show Shale: greenish gray Limestone: dirty gray to light brown, medium crystalline, no visible porosity, no show Limestone: dirty gray to light brown, medium crystalline, no visible porosity, no show, trace pyrite Limestone: dirty gray to light brown, coarsely crystalline, no visible porosity, no show, trace pyrite	
2650	Limestone: gray, medium crystalline, slightly dolomitic, dense, no porosity, no show Limestone: gray, medium crystalline, slightly dolomitic, dense, no porosity, no show Limestone: dirty gray to light brown, medium crystalline, no visible porosity, no show Shale: greenish gray Limestone: dirty gray to light brown, medium crystalline, no visible porosity, no show Limestone: dirty gray to light brown, medium crystalline, no visible porosity, no show, trace pyrite Limestone: dirty gray to light brown, coarsely crystalline, no visible porosity, no show, trace pyrite	
2700	Shale: dark gray Shale: dark gray to red Shale: dark gray to red Shale: light gray to gray Shale: light gray to gray Shale: light gray to gray Shale: light gray to gray Shale: light gray to gray Shale: light to dark gray, trace red Shale: light gray to gray Shale: dark to light gray Shale: dark to light gray Shale: dark to light gray, trace reddish brown Shale: dark to light gray, trace red Shale: gray to greenish gray to mustard yellow Shale: gray to greenish gray to mustard yellow Shale: gray to greenish gray to mustard yellow Shale: brownish gray to gray Shale: brownish gray to gray, trace mustard yellow Shale: brownish to dark gray Shale: brownish to dark gray Shale: brownish to dark gray Shale: brownish to dark gray	
2750	Shale: dark gray Shale: dark gray to red Shale: dark gray to red Shale: light gray to gray Shale: light gray to gray Shale: light gray to gray Shale: light gray to gray Shale: light to dark gray, trace red Shale: light gray to gray Shale: dark to light gray Shale: dark to light gray Shale: dark to light gray, trace reddish brown Shale: dark to light gray, trace red Shale: gray to greenish gray to mustard yellow Shale: gray to greenish gray to mustard yellow Shale: gray to greenish gray to mustard yellow Shale: brownish gray to gray Shale: brownish gray to gray, trace mustard yellow Shale: brownish to dark gray Shale: brownish to dark gray Shale: brownish to dark gray	
2800	Shale: dark gray Shale: dark gray to red Shale: dark gray to red Shale: light gray to gray Shale: light gray to gray Shale: light gray to gray Shale: light gray to gray Shale: light to dark gray, trace red Shale: light gray to gray Shale: dark to light gray Shale: dark to light gray Shale: dark to light gray, trace reddish brown Shale: dark to light gray, trace red Shale: gray to greenish gray to mustard yellow Shale: gray to greenish gray to mustard yellow Shale: gray to greenish gray to mustard yellow Shale: brownish gray to gray Shale: brownish gray to gray, trace mustard yellow Shale: brownish to dark gray Shale: brownish to dark gray Shale: brownish to dark gray	
2850	Shale: dark gray Shale: dark gray to red Shale: dark gray to red Shale: light gray to gray Shale: light gray to gray Shale: light gray to gray Shale: light gray to gray Shale: light to dark gray, trace red Shale: light gray to gray Shale: dark to light gray Shale: dark to light gray Shale: dark to light gray, trace reddish brown Shale: dark to light gray, trace red Shale: gray to greenish gray to mustard yellow Shale: gray to greenish gray to mustard yellow Shale: gray to greenish gray to mustard yellow Shale: brownish gray to gray Shale: brownish gray to gray, trace mustard yellow Shale: brownish to dark gray Shale: brownish to dark gray Shale: brownish to dark gray	
2900	Shale: dark gray Shale: dark gray to red Shale: dark gray to red Shale: light gray to gray Shale: light gray to gray Shale: light gray to gray Shale: light gray to gray Shale: light to dark gray, trace red Shale: light gray to gray Shale: dark to light gray Shale: dark to light gray Shale: dark to light gray, trace reddish brown Shale: dark to light gray, trace red Shale: gray to greenish gray to mustard yellow Shale: gray to greenish gray to mustard yellow Shale: gray to greenish gray to mustard yellow Shale: brownish gray to gray Shale: brownish gray to gray, trace mustard yellow Shale: brownish to dark gray Shale: brownish to dark gray Shale: brownish to dark gray	
2950	Dolomite: light brownish gray w/oil stain, fine crystalline very poor intercrystalline porosity, good show free oil, much gray chert. Sandstone: brown w/oil stain, fine rounded grains, poor to fair odor, very good show free oil, good odor on break poor to fair silica cement, trace pale gold fluorescence. 15" sample is 50% shale, 25% dolomite, & 25% fresh gray chert w/trace of sandstone. Dolomite: light brown w/oil stain to gray, fine crystalline, extremely poor intercrystalline porosity, fair show free oil, good odor on break, much gray chert 2937' 45" sample Dolomite: beige to gray, fine crystalline, very little visible porosity, very slight show free oil, extremely faint odor 2938' 15" Dolomite: light brown to gray, fine crystalline, trace good intercrystalline porosity, and very good show free oil, most w/very poor intercrystalline porosity and slight show oil 30" sample w/no change	

SHALE	
LIMESTONE	
DOLOMITE	
HALITE	
ANHYDRITE/GYPSUM	



Noble Petroleum, Inc. 1382 KB
Scully #1
1,540' FSL & 330' FEL
33-18S-2E
Marion Co., KS



Comments:

GENERAL INFORMATION:
Formation: Viola
Deviated: No Whipstock: ft (KB)
Time Tool Opened: 02:12:30
Time Test Ended: 07:55:30
Test Type: Conventional Bottom Hole (Initial)
Shane/Kent Bend
Unit No: S3/183/Gratzem
Test No:

Interval: 2912.00 ft (KB) To 2938.00 ft (KB) (TVD)
Total Depth: 2938.00 ft (KB) (TVD)
Hole Diameter: 7.88 inches/KB Condition: Poor
Reference Elevations: 1382.00 ft (KB)
1373.00 ft (CF)
KB to GR/CF: 9.00 ft

TEST COMMENT: 1st Open/ 30 Minutes. Good blow built to bottom of 5 gallon bucket in 13 minutes.
1st Shut In/ 30 Minutes. No blow back.
2nd Open/ 45 Minutes. Good blow built to bottom of 5 gallon bucket in 14 minutes. and 10 seconds.
2nd Shut In/ 60 Minutes. No blow back.

Recovery			PRESSURE SUMMARY			
Length (ft)	Description	Volume (bbl)	Time (Min.)	Pressure (psig)	Temp (deg F)	Annotation
189.00	Muddy w ater	0.93	0	1434.88	105.93	Initial Hydro-static
0.00	25% mud, 75% water	0.00	4	42.73	105.97	Open To Flow (1)
252.00	Muddy water	2.53	34	199.46	117.79	Shut-In(1)
0.00	20% mud, 80% water	0.00	65	947.63	117.52	End Shut-In(1)
219.00	Muddy water	3.07	67	204.69	117.32	Open To Flow (2)
0.00	5% mud, 95% water	0.00	111	297.47	117.53	Shut-In(2)
			174	947.87	118.39	End Shut-In(2)
			178	1410.66	114.83	Final Hydro-static

Serial #: 8524 Inside Noble Petroleum, Inc. Scully #1 DST Test Number: 1

