



TRILOBITE TESTING, INC.

DRILL STEM TEST REPORT

Samuel Gary Jr. & Assoc. Inc.

12-5s-24w

1515 Wynkoop, STE 700
Denver, CO, 80202

F&R Realty # 1-12

ATTN: Dan Pritchard

Job Ticket: 60145

DST#: 1

Test Start: 2014.09.22 @ 20:08:00

GENERAL INFORMATION:

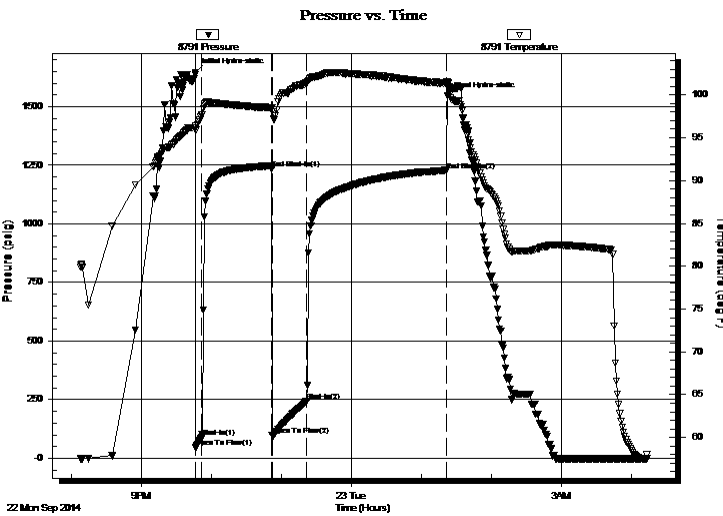
Formation: **LKC - "B"**
 Deviated: No Whipstock: ft (KB)
 Time Tool Opened: 21:46:45
 Time Test Ended: 04:13:15
 Interval: **3402.00 ft (KB) To 3498.00 ft (KB) (TVD)**
 Total Depth: 3498.00 ft (KB) (TVD)
 Hole Diameter: 7.88 inches Hole Condition: Good
 Test Type: Conventional Bottom Hole (Initial)
 Tester: Donovan Baumann
 Unit No: 57
 Reference Elevations: 2340.00 ft (KB)
 2335.00 ft (CF)
 KB to GR/CF: 5.00 ft

Serial #: 8791

Inside

Press @ Run Depth: 244.33 psig @ 3403.00 ft (KB) Capacity: 8000.00 psig
 Start Date: 2014.09.22 End Date: 2014.09.23 Last Calib.: 2014.09.23
 Start Time: 20:08:05 End Time: 04:13:14 Time On Btm: 2014.09.22 @ 21:46:30
 Time Off Btm: 2014.09.23 @ 01:22:30

TEST COMMENT: 5 - IF - Strong surface blow built to BOB in 3 min.
 60 - ISI - Weak return built to 1/2 inch in 3 min died back to 1/4 after 25 min dead in 57 min
 30 - FF - Strong surface blow built to BOB in 3 min.
 120 - FSI - Weak surface blow built to BOB in 13 min. & stayed for the w hole duration



PRESSURE SUMMARY

Time (Min.)	Pressure (psig)	Temp (deg F)	Annotation
0	1646.07	96.38	Initial Hydro-static
1	45.18	95.88	Open To Flow (1)
6	88.15	97.66	Shut-In(1)
66	1236.05	98.52	End Shut-In(1)
66	97.56	98.06	Open To Flow (2)
96	244.33	101.35	Shut-In(2)
216	1228.67	101.41	End Shut-In(2)
216	1544.66	101.52	Final Hydro-static

Recovery

Length (ft)	Description	Volume (bbl)
126.00	GMOC - 40M - 40o - 20G	1.49
126.00	MCGO - 15M - 55o - 30G	1.77
63.00	MCGO - 20M - 50o - 30G	0.88
315.00	Oil - 100o	4.42

Gas Rates

	Choke (inches)	Pressure (psig)	Gas Rate (Mcf/d)



**TRILOBITE
TESTING, INC.**

DRILL STEM TEST REPORT

FLUID SUMMARY

Samuel Gary Jr. & Assoc. Inc.

12-5s-24w

1515 Wynkoop, STE 700
Denver, CO, 80202

F&R Realty # 1-12

Job Ticket: 60145

DST#: 1

ATTN: Dan Pritchard

Test Start: 2014.09.22 @ 20:08:00

Mud and Cushion Information

Mud Type: Gel Chem

Cushion Type:

Oil API:

deg API

Mud Weight: 9.00 lb/gal

Cushion Length:

ft

Water Salinity:

ppm

Viscosity: 57.00 sec/qt

Cushion Volume:

bbbl

Water Loss: 8.76 in³

Gas Cushion Type:

Resistivity: 0.00 ohm.m

Gas Cushion Pressure:

psig

Salinity: 500.00 ppm

Filter Cake: 1.00 inches

Recovery Information

Recovery Table

Length ft	Description	Volume bbbl
126.00	GMOC - 40M - 40o - 20G	1.494
126.00	MCGO - 15M - 55o - 30G	1.767
63.00	MCGO - 20M - 50o - 30G	0.884
315.00	Oil - 100o	4.419

Total Length: 630.00 ft

Total Volume: 8.564 bbl

Num Fluid Samples: 0

Num Gas Bombs: 0

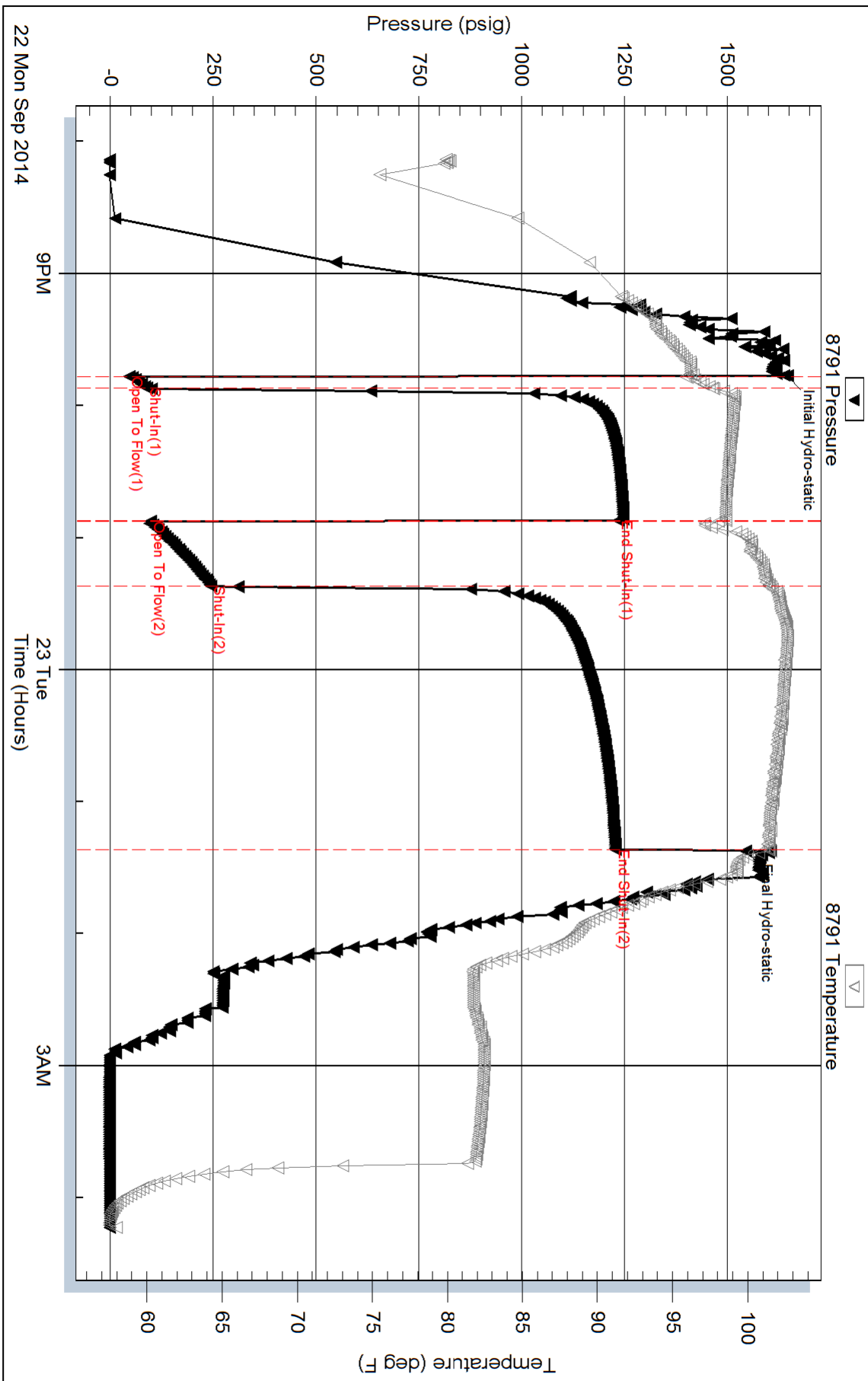
Serial #:

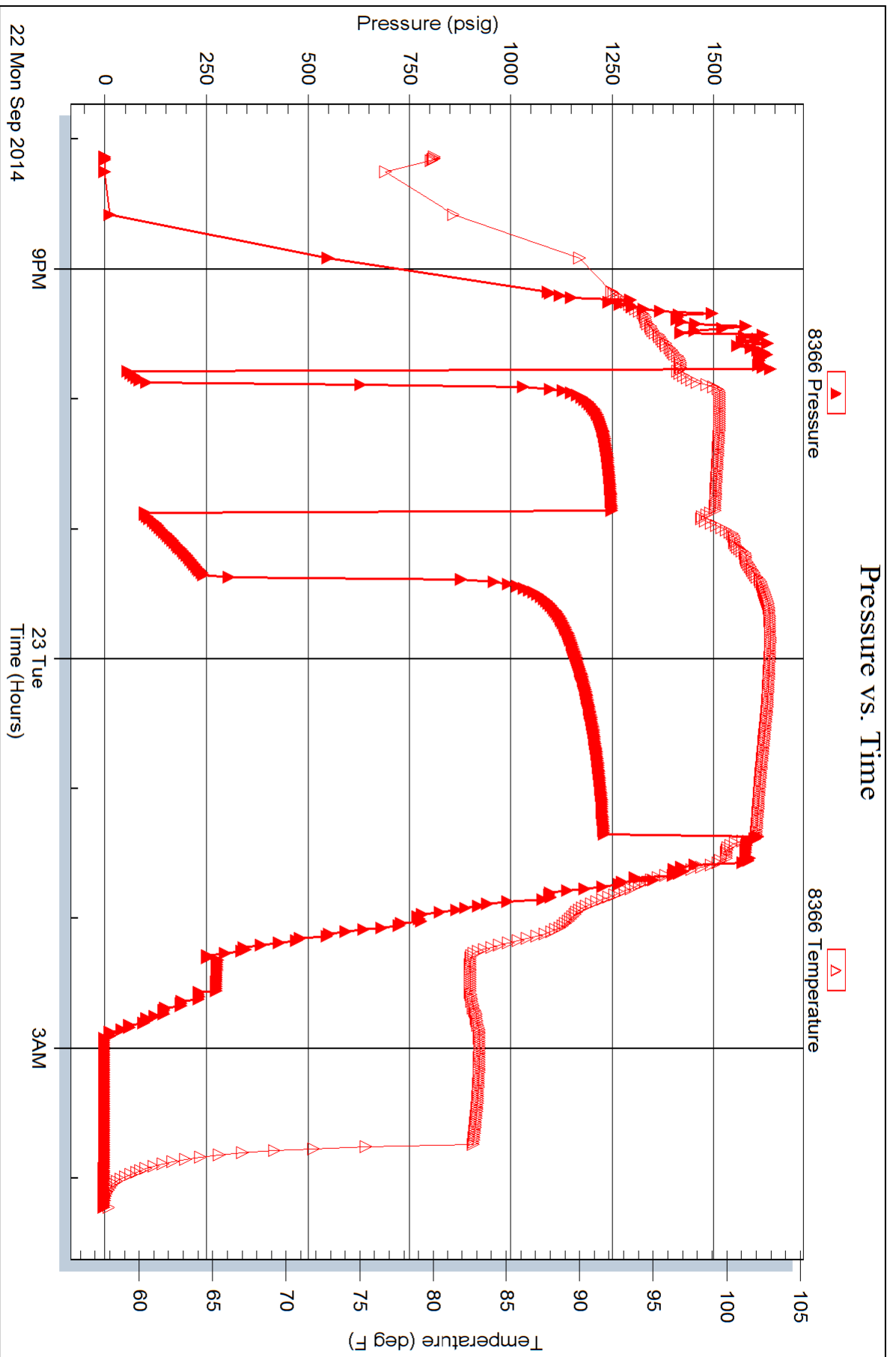
Laboratory Name:

Laboratory Location:

Recovery Comments:

Pressure vs. Time





Serial #: 8320

Fluid

Samuel Gary Jr. & Assoc. Inc.

F&R Realty # 1-12

DST Test Number: 1

