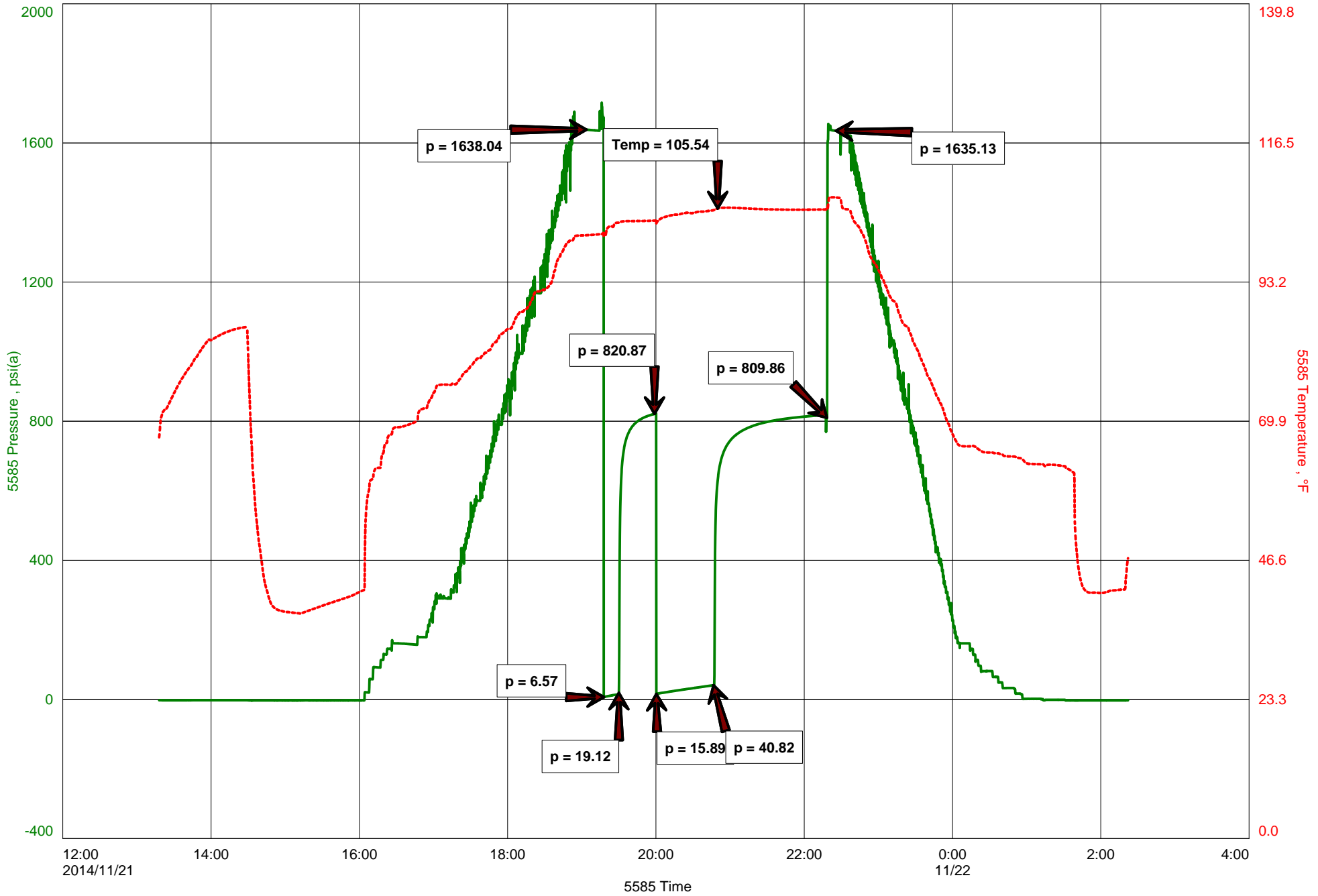


# Herrmann #9-4b





Michael Carroll  
 620-617-0368  
 carroll.dtlc@gmail.com

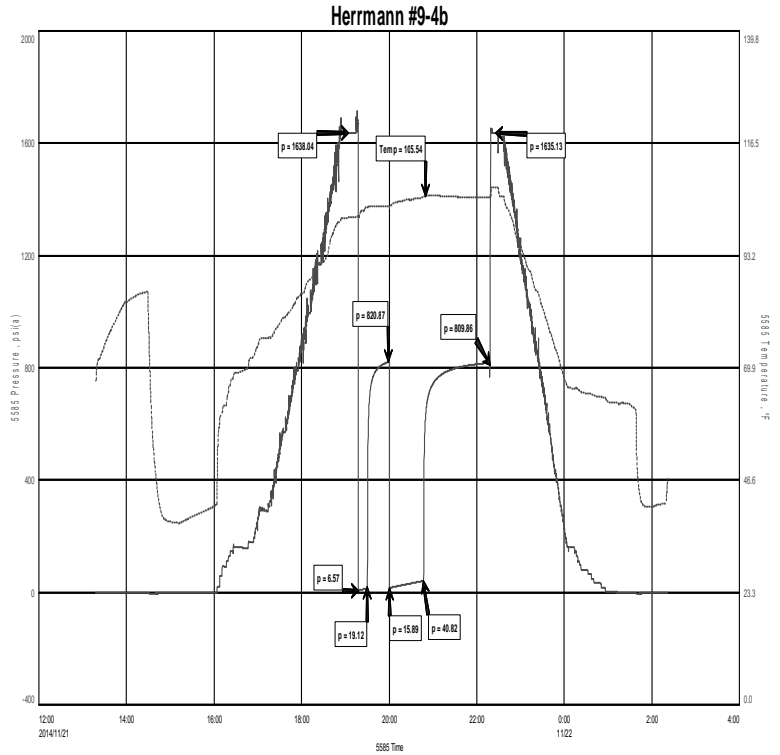
**Hoisington, Kansas**

**General Information**

Company Name Running Foxes Petroleum

Contact	Chad Counts
Well Name	Herrmann #9-4b
Unique Well ID	Dst#1 Viola 3323-3335'
Surface Location	Sec4-1s-15e Brown County
Field	Livingood
Well Type	Vertical
Test Type	Drill Stem Test
Well Operator	Running Foxes Petroleum

Formation	Dst#1 Viola 3323-3335'
Well Fluid Type	01 Oil
Test Purpose	Initial Test
Start Test Date	2014/11/21
Start Test Time	13:18:00
Final Test Time	02:20:00
Job Number	P0020
Report Date	2014/11/21
Prepared By	Michael Carroll



**TEST RECOVERY**

Remarks	Recovery:	55'	CO	100%O	Gravity: 30 @ 60 Degrees F
		27'	HMCO	54%O	46%M
	Total Fluid	82'			
	Tool Sample	40%O	60%M		



**DIAMOND TESTING**  
P.O. Box 157  
**HOISINGTON, KANSAS 67544**  
(800) 542-7313  
**DRILL-STEM TEST TICKET**  
FILE: \_\_\_\_\_

TIME ON: \_\_\_\_\_  
TIME OFF: \_\_\_\_\_

Company \_\_\_\_\_ Lease & Well No. \_\_\_\_\_  
Contractor \_\_\_\_\_ Charge to \_\_\_\_\_  
Elevation \_\_\_\_\_ Formation \_\_\_\_\_ Effective Pay \_\_\_\_\_ Ft. Ticket No. \_\_\_\_\_  
Date \_\_\_\_\_ Sec. \_\_\_\_\_ Twp. \_\_\_\_\_ S Range \_\_\_\_\_ W County \_\_\_\_\_ State **KANSAS**  
Test Approved By \_\_\_\_\_ Diamond Representative \_\_\_\_\_

Formation Test No. \_\_\_\_\_ Interval Tested from \_\_\_\_\_ ft. to \_\_\_\_\_ ft. Total Depth \_\_\_\_\_ ft.  
Packer Depth \_\_\_\_\_ ft. Size 6 3/4 in. Packer depth \_\_\_\_\_ ft. Size 6 3/4 in.  
Packer Depth \_\_\_\_\_ ft. Size 6 3/4 in. Packer depth \_\_\_\_\_ ft. Size 6 3/4 in.  
Depth of Selective Zone Set \_\_\_\_\_

Top Recorder Depth (Inside) \_\_\_\_\_ ft. Recorder Number \_\_\_\_\_ Cap. \_\_\_\_\_ P.S.I.  
Bottom Recorder Depth (Outside) \_\_\_\_\_ ft. Recorder Number \_\_\_\_\_ Cap. \_\_\_\_\_ P.S.I.  
Below Straddle Recorder Depth \_\_\_\_\_ ft. Recorder Number \_\_\_\_\_ Cap. \_\_\_\_\_ P.S.I.

Mud Type \_\_\_\_\_ Viscosity \_\_\_\_\_ Drill Collar Length \_\_\_\_\_ ft. I.D. 2 1/4 in.  
Weight \_\_\_\_\_ Water Loss \_\_\_\_\_ cc. Weight Pipe Length \_\_\_\_\_ ft. I.D. 2 7/8 in.  
Chlorides \_\_\_\_\_ P.P.M. Drill Pipe Length \_\_\_\_\_ ft. I.D. 3 1/2 in.  
Jars: Make STERLING Serial Number \_\_\_\_\_ Test Tool Length \_\_\_\_\_ ft. Tool Size 3 1/2-IF in.  
Did Well Flow? \_\_\_\_\_ Reversed Out \_\_\_\_\_ Anchor Length \_\_\_\_\_ ft. Size 4 1/2-FH in.  
Main Hole Size 7 7/8 Tool Joint Size 4 1/2 in. Surface Choke Size 1 in. Bottom Choke Size 5/8 in.

Blow: 1st Open: \_\_\_\_\_  
2nd Open: \_\_\_\_\_

Recovered _____ ft. of _____	
Recovered _____ ft. of _____	
Recovered _____ ft. of _____	
Recovered _____ ft. of _____	
Recovered _____ ft. of _____	Price Job
Recovered _____ ft. of _____	Other Charges
Remarks: _____	Insurance
	Total

Time Set Packer(s) \_\_\_\_\_ A.M. P.M. Time Started Off Bottom \_\_\_\_\_ A.M. P.M. Maximum Temperature \_\_\_\_\_  
Initial Hydrostatic Pressure..... (A) \_\_\_\_\_ P.S.I.  
Initial Flow Period..... Minutes \_\_\_\_\_ (B) \_\_\_\_\_ P.S.I. to (C) \_\_\_\_\_ P.S.I.  
Initial Closed In Period..... Minutes \_\_\_\_\_ (D) \_\_\_\_\_ P.S.I.  
Final Flow Period..... Minutes \_\_\_\_\_ (E) \_\_\_\_\_ P.S.I. to (F) \_\_\_\_\_ P.S.I.  
Final Closed In Period..... Minutes \_\_\_\_\_ (G) \_\_\_\_\_ P.S.I.  
Final Hydrostatic Pressure..... (H) \_\_\_\_\_ P.S.I.

Diamond Testing shall not be liable for damages of any kind to the property or personnel of the one for whom a test is made or for any loss suffered or sustained, directly or indirectly, through the use of its equipment, or its statement or opinion concerning the result of any test. Tools lost or damaged in the hole shall be paid for at cost by the party for whom the test is made.