



## DRILL STEM TEST REPORT

Prepared For: **Jason Oil Company, LLC**

PO Box 701  
Russell, KS 67665

ATTN: Jeff Lawler

### **Goddard #1**

#### **33-7s-24w Graham, KS**

Start Date: 2014.11.09 @ 08:31:17

End Date: 2014.11.09 @ 14:48:47

Job Ticket #: 58406                      DST #: 1

Trilobite Testing, Inc  
1515 Commerce Parkway Hays, KS 67601  
ph: 785-625-4778 fax: 785-625-5620

Printed: 2014.11.13 @ 11:36:08



**TRILOBITE TESTING, INC**

# DRILL STEM TEST REPORT

Jason Oil Company, LLC

**33-7s-24w Graham, KS**

PO Box 701  
Russell, KS 67665

**Goddard #1**

Job Ticket: 58406

**DST#: 1**

ATTN: Jeff Lawler

Test Start: 2014.11.09 @ 08:31:17

## GENERAL INFORMATION:

Formation: **KC "D-F"**

Deviated: No Whipstock: ft (KB)

Time Tool Opened: 11:07:47

Time Test Ended: 14:48:47

Test Type: Conventional Bottom Hole (Initial)

Tester: Brannan Lonsdale

Unit No: 62

**Interval: 3767.00 ft (KB) To 3800.00 ft (KB) (TVD)**

Reference Elevations: 2442.00 ft (KB)

Total Depth: 3800.00 ft (KB) (TVD)

2437.00 ft (CF)

Hole Diameter: 7.88 inches Hole Condition: Fair

KB to GR/CF: 5.00 ft

**Serial #: 8655 Outside**

Press@RunDepth: 103.04 psig @ 3768.00 ft (KB)

Capacity: 8000.00 psig

Start Date: 2014.11.09

End Date: 2014.11.09

Last Calib.: 2014.11.09

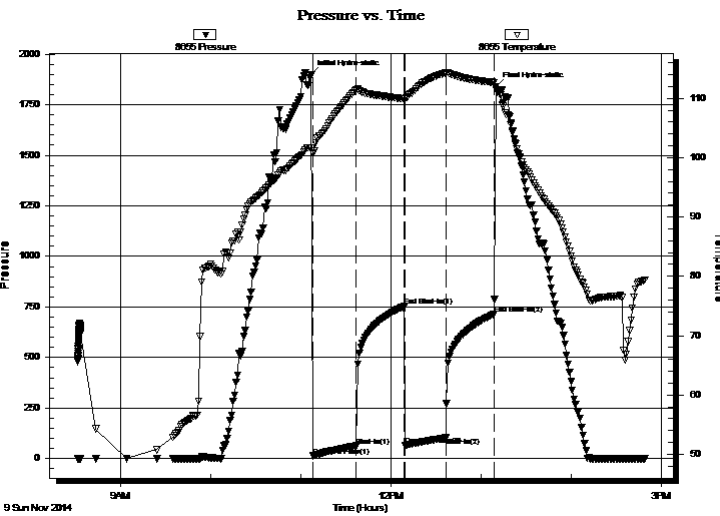
Start Time: 08:31:18

End Time: 14:48:47

Time On Btm: 2014.11.09 @ 11:06:47

Time Off Btm: 2014.11.09 @ 13:09:47

**TEST COMMENT:** 30- IF- BOB 26 mins  
30- IS- No blow  
30- FF- Slowly built to 8 1/2"  
30- FS- No blow



## PRESSURE SUMMARY

| Time (Min.) | Pressure (psig) | Temp (deg F) | Annotation           |
|-------------|-----------------|--------------|----------------------|
| 0           | 1897.77         | 101.71       | Initial Hydro-static |
| 1           | 13.50           | 100.83       | Open To Flow (1)     |
| 30          | 62.72           | 111.41       | Shut-In(1)           |
| 62          | 753.30          | 109.95       | End Shut-In(1)       |
| 63          | 64.84           | 109.91       | Open To Flow (2)     |
| 90          | 103.04          | 114.26       | Shut-In(2)           |
| 122         | 713.66          | 112.66       | End Shut-In(2)       |
| 123         | 1841.72         | 111.41       | Final Hydro-static   |

## Recovery

| Length (ft) | Description                   | Volume (bbl) |
|-------------|-------------------------------|--------------|
| 190.00      | MW w / show of oil, 40%M 60%W | 2.60         |
|             |                               |              |
|             |                               |              |
|             |                               |              |
|             |                               |              |

## Gas Rates

| Choke (inches) | Pressure (psig) | Gas Rate (Mcf/d) |
|----------------|-----------------|------------------|
|                |                 |                  |





**TRILOBITE  
TESTING, INC**

# DRILL STEM TEST REPORT

**TOOL DIAGRAM**

Jason Oil Company, LLC

**33-7s-24w Graham, KS**

PO Box 701  
Russell, KS 67665

**Goddard #1**

Job Ticket: 58406

**DST#: 1**

ATTN: Jeff Lawler

Test Start: 2014.11.09 @ 08:31:17

## Tool Information

|                           |                    |                       |                            |                                    |
|---------------------------|--------------------|-----------------------|----------------------------|------------------------------------|
| Drill Pipe:               | Length: 3765.00 ft | Diameter: 3.75 inches | Volume: 51.43 bbl          | Tool Weight: 2000.00 lb            |
| Heavy Wt. Pipe:           | Length: ft         | Diameter: inches      | Volume: - bbl              | Weight set on Packer: 25000.00 lb  |
| Drill Collar:             | Length: 0.00 ft    | Diameter: 2.25 inches | Volume: 0.00 bbl           | Weight to Pull Loose: 68000.00 lb  |
|                           |                    |                       | <u>Total Volume: - bbl</u> | Tool Chased 0.00 ft                |
| Drill Pipe Above KB:      | 18.00 ft           |                       |                            | String Weight: Initial 56000.00 lb |
| Depth to Top Packer:      | 3767.00 ft         |                       |                            | Final 59000.00 lb                  |
| Depth to Bottom Packer:   | ft                 |                       |                            |                                    |
| Interval between Packers: | 33.00 ft           |                       |                            |                                    |
| Tool Length:              | 53.00 ft           |                       |                            |                                    |
| Number of Packers:        | 2                  | Diameter: 6.75 inches |                            |                                    |

Tool Comments:

## Tool Description

| Tool Description          | Length (ft)  | Serial No. | Position | Depth (ft) | Accum. Lengths                |
|---------------------------|--------------|------------|----------|------------|-------------------------------|
| Change Over Sub           | 1.00         |            |          | 3748.00    |                               |
| Shut In Tool              | 5.00         |            |          | 3753.00    |                               |
| Hydraulic tool            | 5.00         |            |          | 3758.00    |                               |
| Packer                    | 5.00         |            |          | 3763.00    | 20.00 Bottom Of Top Packer    |
| Packer                    | 4.00         |            |          | 3767.00    |                               |
| Stubb                     | 1.00         |            |          | 3768.00    |                               |
| Recorder                  | 0.00         | 8651       | Inside   | 3768.00    |                               |
| Recorder                  | 0.00         | 8655       | Outside  | 3768.00    |                               |
| Perforations              | 29.00        |            |          | 3797.00    |                               |
| Bullnose                  | 3.00         |            |          | 3800.00    | 33.00 Bottom Packers & Anchor |
| <b>Total Tool Length:</b> | <b>53.00</b> |            |          |            |                               |



**TRILOBITE  
TESTING, INC**

# DRILL STEM TEST REPORT

## FLUID SUMMARY

Jason Oil Company, LLC

**33-7s-24w Graham, KS**

PO Box 701  
Russell, KS 67665

**Goddard #1**

Job Ticket: 58406

**DST#: 1**

ATTN: Jeff Lawler

Test Start: 2014.11.09 @ 08:31:17

### Mud and Cushion Information

Mud Type: Gel Chem

Cushion Type:

Oil API:

deg API

Mud Weight: 8.00 lb/gal

Cushion Length:

ft

Water Salinity:

50000 ppm

Viscosity: 49.00 sec/qt

Cushion Volume:

bbbl

Water Loss: 8.79 in<sup>3</sup>

Gas Cushion Type:

Resistivity: ohm.m

Gas Cushion Pressure:

psig

Salinity: 300.00 ppm

Filter Cake: inches

### Recovery Information

Recovery Table

| Length<br>ft | Description                   | Volume<br>bbl |
|--------------|-------------------------------|---------------|
| 190.00       | MW w / show of oil, 40%M 60%W | 2.596         |

Total Length: 190.00 ft      Total Volume: 2.596 bbl

Num Fluid Samples: 0

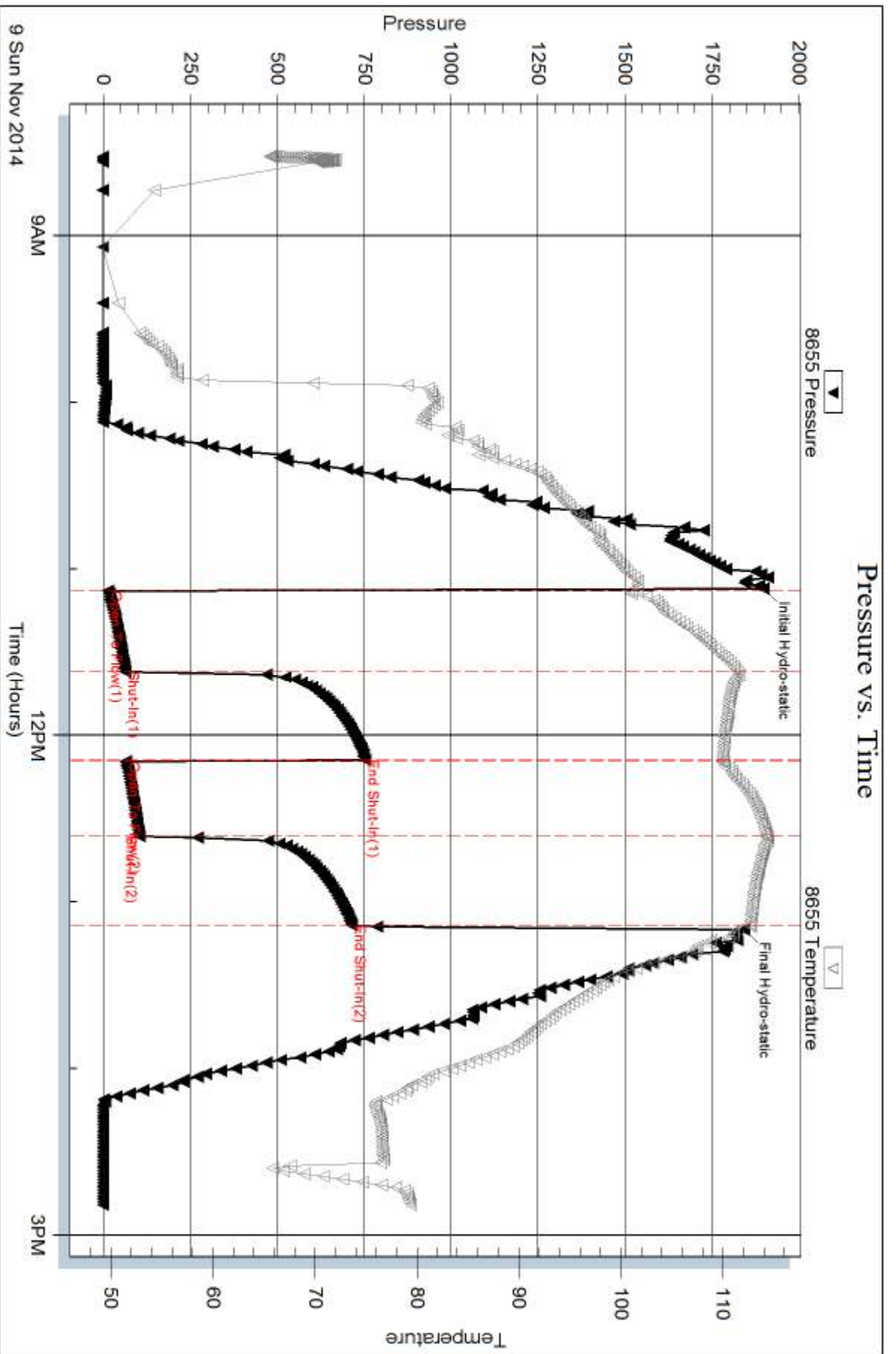
Num Gas Bombs: 0

Serial #:

Laboratory Name:

Laboratory Location:

Recovery Comments:



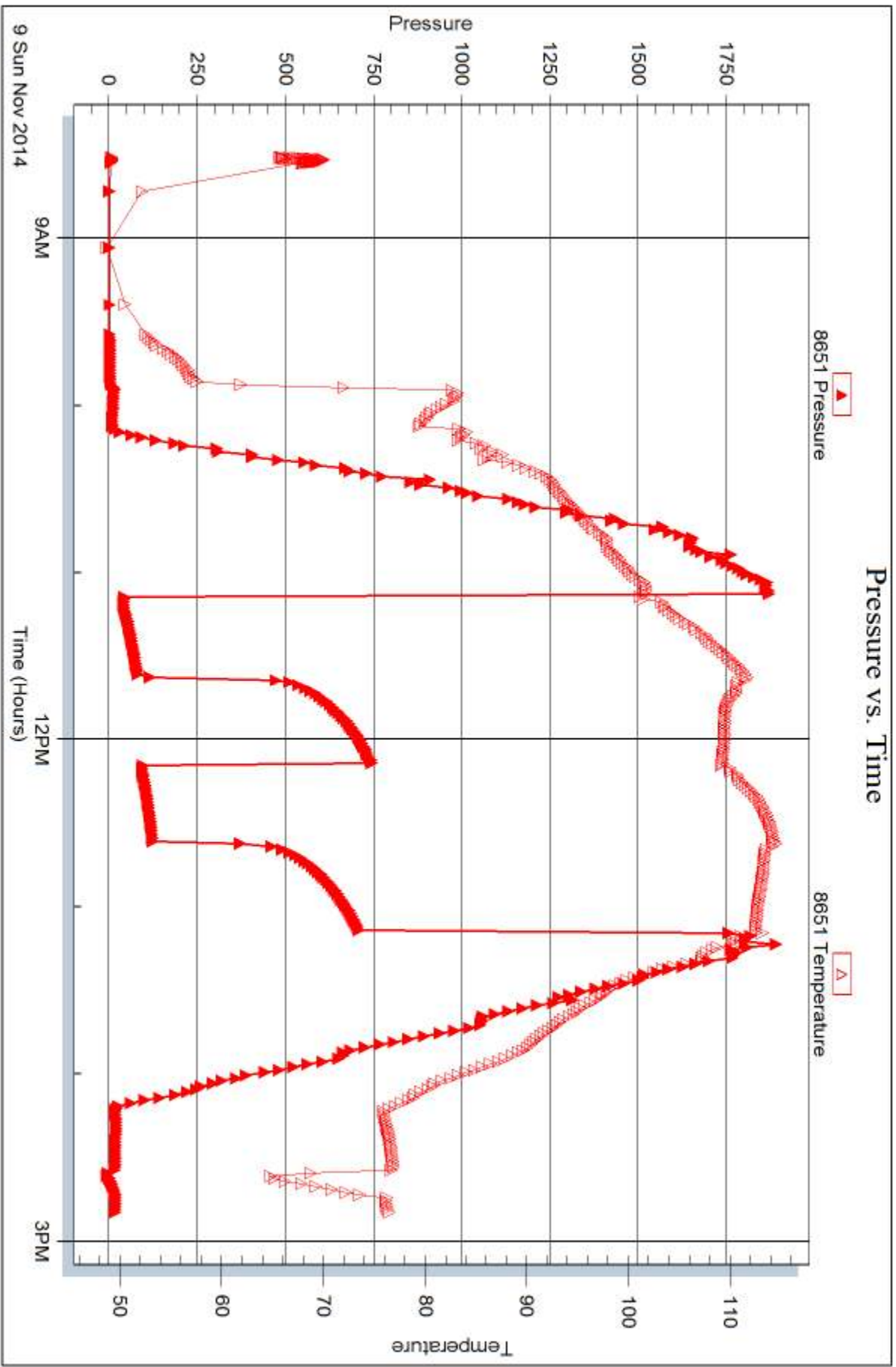
Serial #: 8651

Inside

Jason Oil Company, LLC

Goddard #1

DST Test Number: 1



Trilobite Testing, Inc

Ref. No: 58406

Printed: 2014.11.13 @ 11:36:09



## DRILL STEM TEST REPORT

Prepared For: **Jason Oil Company, LLC**

PO Box 701  
Russell, KS 67665

ATTN: Jeff Lawler

### **Goddard #1**

#### **33-7s-24w Graham, KS**

Start Date: 2014.11.10 @ 01:56:38

End Date: 2014.11.10 @ 08:57:08

Job Ticket #: 58407                      DST #: 2

Trilobite Testing, Inc  
1515 Commerce Parkway Hays, KS 67601  
ph: 785-625-4778 fax: 785-625-5620

Printed: 2014.11.13 @ 11:35:44





**TRILOBITE TESTING, INC.**

# DRILL STEM TEST REPORT

Jason Oil Company, LLC

**33-7s-24w Graham, KS**

PO Box 701  
Russell, KS 67665

**Goddard #1**

Job Ticket: 58407

**DST#: 2**

ATTN: Jeff Lawler

Test Start: 2014.11.10 @ 01:56:38

## GENERAL INFORMATION:

Formation: **KC "H-L"**

Deviated: No Whipstock: ft (KB)

Time Tool Opened: 04:21:38

Time Test Ended: 08:57:08

Test Type: Conventional Bottom Hole (Reset)

Tester: Brannan Lonsdale

Unit No: 62

**Interval: 3836.00 ft (KB) To 3926.00 ft (KB) (TVD)**

Reference Elevations: 2442.00 ft (KB)

Total Depth: 3926.00 ft (KB) (TVD)

2437.00 ft (CF)

Hole Diameter: 7.88 inches Hole Condition: Fair

KB to GR/CF: 5.00 ft

**Serial #: 8655 Outside**

Press@RunDepth: 101.69 psig @ 3837.00 ft (KB)

Capacity: 8000.00 psig

Start Date: 2014.11.10

End Date:

2014.11.10

Last Calib.:

2014.11.10

Start Time:

01:56:39

End Time:

08:57:08

Time On Btm:

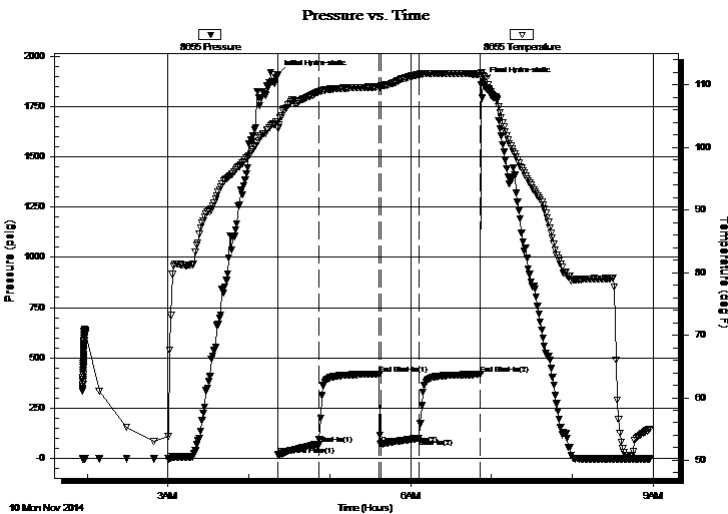
2014.11.10 @ 04:21:08

Time Off Btm:

2014.11.10 @ 06:53:38

**TEST COMMENT:** 30- IF- BOB 23 mins  
45- IS- No blow  
30- FF- BOB 28 mins  
45- FS- Sporadic surface blow

## PRESSURE SUMMARY



| Time (Min.) | Pressure (psig) | Temp (deg F) | Annotation           |
|-------------|-----------------|--------------|----------------------|
| 0           | 1906.38         | 104.10       | Initial Hydro-static |
| 1           | 17.80           | 103.11       | Open To Flow (1)     |
| 31          | 68.49           | 108.91       | Shut-In(1)           |
| 76          | 420.47          | 109.71       | End Shut-In(1)       |
| 77          | 71.72           | 109.77       | Open To Flow (2)     |
| 105         | 101.69          | 111.69       | Shut-In(2)           |
| 151         | 418.11          | 111.75       | End Shut-In(2)       |
| 153         | 1871.75         | 111.55       | Final Hydro-static   |

## Recovery

| Length (ft) | Description               | Volume (bbl) |
|-------------|---------------------------|--------------|
| 65.00       | GOWM, 10%G 15%O 25%W 50%M | 0.89         |
| 125.00      | OCM, 20%O 80%M            | 1.71         |
| 10.00       | GO, 10%G 90%O             | 0.14         |
| 0.00        | 55' GIP                   | 0.00         |
|             |                           |              |
|             |                           |              |

## Gas Rates

|  | Choke (inches) | Pressure (psig) | Gas Rate (Mcf/d) |
|--|----------------|-----------------|------------------|
|  |                |                 |                  |

\* Recovery from multiple tests





**TRILOBITE  
TESTING, INC.**

# DRILL STEM TEST REPORT

**TOOL DIAGRAM**

Jason Oil Company, LLC

**33-7s-24w Graham, KS**

PO Box 701  
Russell, KS 67665

**Goddard #1**

Job Ticket: 58407

**DST#: 2**

ATTN: Jeff Lawler

Test Start: 2014.11.10 @ 01:56:38

## Tool Information

|                           |                    |                       |                            |                                    |
|---------------------------|--------------------|-----------------------|----------------------------|------------------------------------|
| Drill Pipe:               | Length: 3830.00 ft | Diameter: 3.75 inches | Volume: 52.32 bbl          | Tool Weight: 2000.00 lb            |
| Heavy Wt. Pipe:           | Length: ft         | Diameter: inches      | Volume: - bbl              | Weight set on Packer: 25000.00 lb  |
| Drill Collar:             | Length: 0.00 ft    | Diameter: 2.25 inches | Volume: 0.00 bbl           | Weight to Pull Loose: 75000.00 lb  |
|                           |                    |                       | <u>Total Volume: - bbl</u> | Tool Chased 0.00 ft                |
| Drill Pipe Above KB:      | 14.00 ft           |                       |                            | String Weight: Initial 57000.00 lb |
| Depth to Top Packer:      | 3836.00 ft         |                       |                            | Final 59000.00 lb                  |
| Depth to Bottom Packer:   | ft                 |                       |                            |                                    |
| Interval between Packers: | 90.00 ft           |                       |                            |                                    |
| Tool Length:              | 110.00 ft          |                       |                            |                                    |
| Number of Packers:        | 2                  | Diameter: 6.75 inches |                            |                                    |

Tool Comments:

## Tool Description

| Tool Description | Length (ft) | Serial No. | Position | Depth (ft) | Accum. Lengths                |
|------------------|-------------|------------|----------|------------|-------------------------------|
| Change Over Sub  | 1.00        |            |          | 3817.00    |                               |
| Shut In Tool     | 5.00        |            |          | 3822.00    |                               |
| Hydraulic tool   | 5.00        |            |          | 3827.00    |                               |
| Packer           | 5.00        |            |          | 3832.00    | 20.00 Bottom Of Top Packer    |
| Packer           | 4.00        |            |          | 3836.00    |                               |
| Stubb            | 1.00        |            |          | 3837.00    |                               |
| Recorder         | 0.00        | 8651       | Inside   | 3837.00    |                               |
| Recorder         | 0.00        | 8655       | Outside  | 3837.00    |                               |
| Perforations     | 21.00       |            |          | 3858.00    |                               |
| Change Over Sub  | 1.00        |            |          | 3859.00    |                               |
| Drill Pipe       | 63.00       |            |          | 3922.00    |                               |
| Change Over Sub  | 1.00        |            |          | 3923.00    |                               |
| Bullnose         | 3.00        |            |          | 3926.00    | 90.00 Bottom Packers & Anchor |

**Total Tool Length: 110.00**



**TRILOBITE  
TESTING, INC**

# DRILL STEM TEST REPORT

**FLUID SUMMARY**

Jason Oil Company, LLC

**33-7s-24w Graham, KS**

PO Box 701  
Russell, KS 67665

**Goddard #1**

Job Ticket: 58407

**DST#: 2**

ATTN: Jeff Lawler

Test Start: 2014.11.10 @ 01:56:38

## Mud and Cushion Information

Mud Type: Gel Chem

Cushion Type:

Oil API:

32 deg API

Mud Weight: 9.00 lb/gal

Cushion Length:

ft

Water Salinity:

ppm

Viscosity: 47.00 sec/qt

Cushion Volume:

bbbl

Water Loss: 8.39 in<sup>3</sup>

Gas Cushion Type:

Resistivity: ohm.m

Gas Cushion Pressure:

psig

Salinity: 300.00 ppm

Filter Cake: inches

## Recovery Information

Recovery Table

| Length<br>ft | Description               | Volume<br>bbbl |
|--------------|---------------------------|----------------|
| 65.00        | GOWM, 10%G 15%O 25%W 50%M | 0.888          |
| 125.00       | OCM, 20%O 80%M            | 1.708          |
| 10.00        | GO, 10%G 90%O             | 0.137          |
| 0.00         | 55' GIP                   | 0.000          |

Total Length: 200.00 ft

Total Volume: 2.733 bbl

Num Fluid Samples: 0

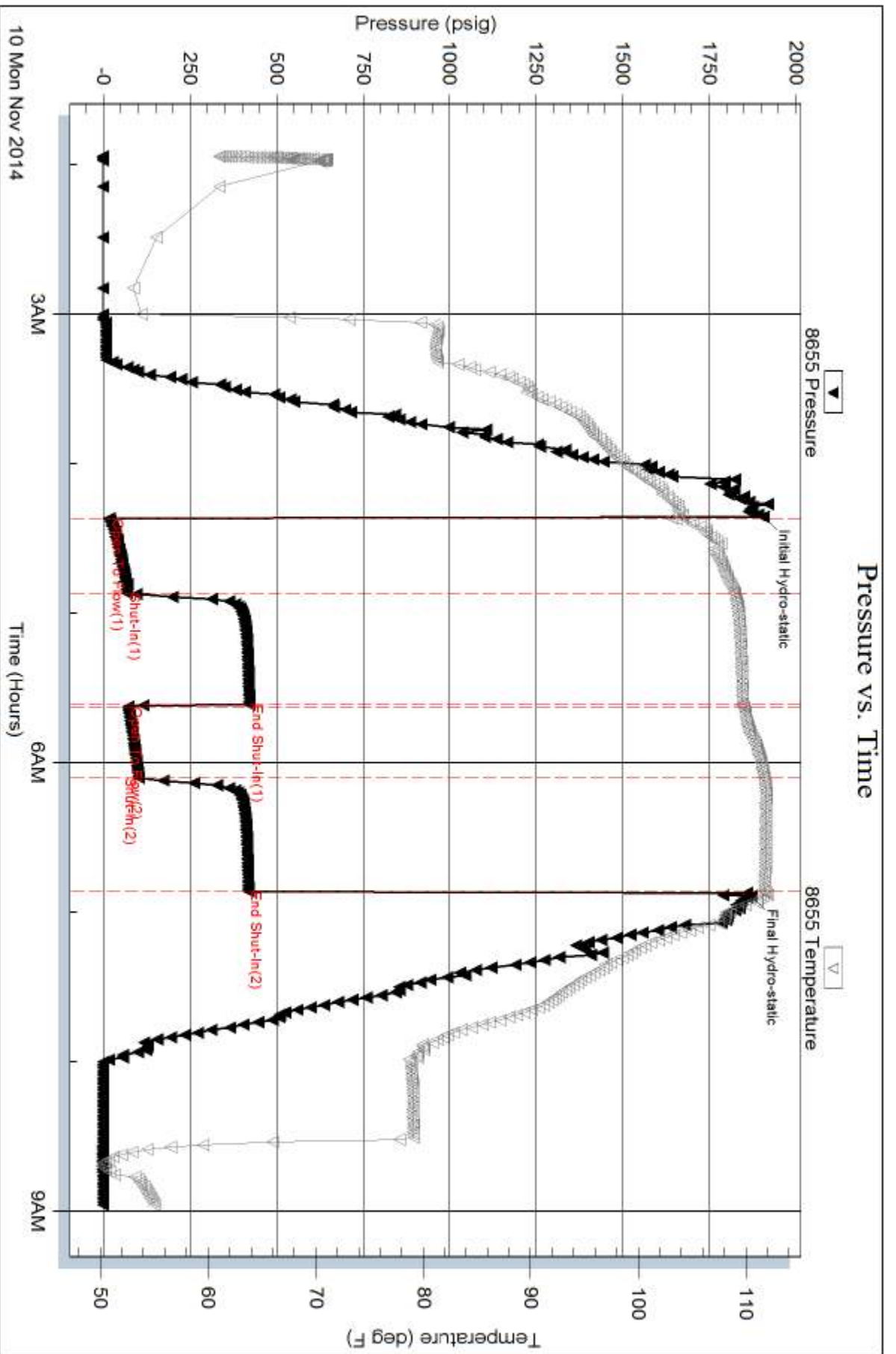
Num Gas Bombs: 0

Serial #:

Laboratory Name:

Laboratory Location:

Recovery Comments:



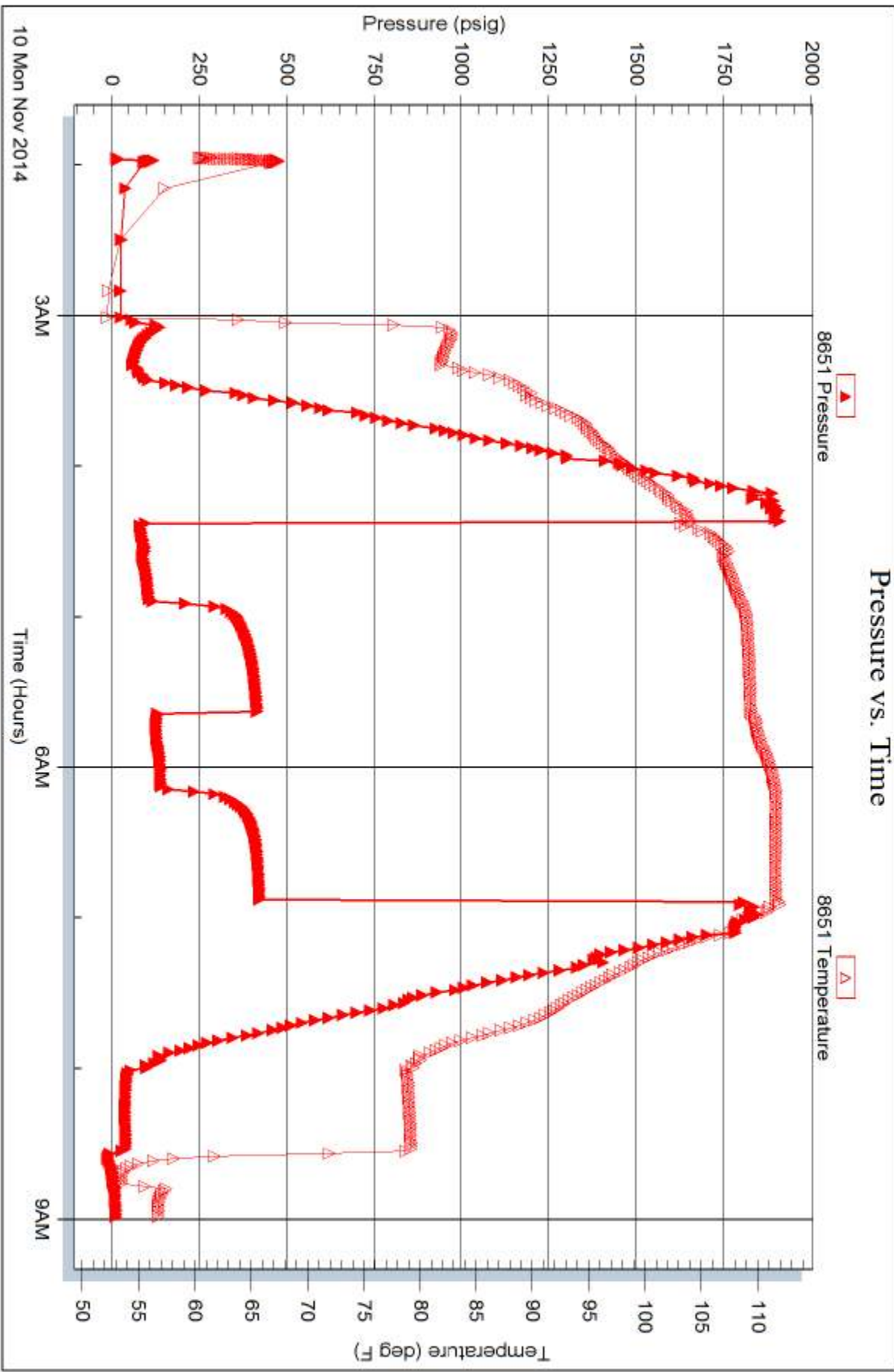
Serial #: 8651

Inside

Jason Oil Company, LLC

Goddard #1

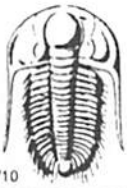
DST Test Number: 2



Trilobite Testing, Inc

Ref. No: 58407

Printed: 2014.11.13 @ 11:35:46



# TRILOBITE TESTING INC.

1515 Commerce Parkway • Hays, Kansas 67601

## Test Ticket

NO. **58406**

4/10

Well Name & No. Quaddard #1 Test No. 1 Date 11/9/14  
 Company Jason Oil Company, LLC Elevation 2442 KB 2437 GL  
 Address 3718 83rd St. PO Box 701 Russell, KS 67665  
 Co. Rep / Geo. Jeff Lawler Rig Royal #1  
 Location: Sec. 33 Twp. 7 S Rge. 24 W Co. Craham State KS

Interval Tested 3767-3800 Zone Tested KC "D-F"  
 Anchor Length 33' Drill Pipe Run 3765 Mud Wt. 8.5  
 Top Packer Depth 3762 Drill Collars Run --- Vis 49  
 Bottom Packer Depth 3767 Wt. Pipe Run --- WL 8.8  
 Total Depth 3800 Chlorides 300 ppm System LCM 2 1/2

Blow Description IF - BOB 26mins  
ISF - No blow  
PF - Slowly built to 8 1/2"  
FSF - No blow

| Rec        | Feet of                  | %gas | %oil | %water    | %mud      |
|------------|--------------------------|------|------|-----------|-----------|
| <u>190</u> | <u>MW w/ slow of oil</u> |      |      | <u>60</u> | <u>40</u> |
| Rec        | Feet of                  | %gas | %oil | %water    | %mud      |
| Rec        | Feet of                  | %gas | %oil | %water    | %mud      |
| Rec        | Feet of                  | %gas | %oil | %water    | %mud      |
| Rec        | Feet of                  | %gas | %oil | %water    | %mud      |

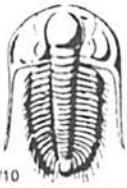
Rec Total 190' BHT 113° Gravity --- API RW 14 @ 76 °F Chlorides 50,000 ppm  
 (A) Initial Hydrostatic 1898  Test 1150 T-On Location 0811  
 (B) First Initial Flow 14  Jars --- T-Started 0831  
 (C) First Final Flow 63  Safety Joint --- T-Open 1108  
 (D) Initial Shut-In 253  Circ Sub --- T-Pulled 1308  
 (E) Second Initial Flow 65  Hourly Standby --- T-Out 1450  
 (F) Second Final Flow 103  Mileage 146 RT Comments ---  
 (G) Final Shut-In 214  Sampler 128rt 198.40  
 (H) Final Hydrostatic 1842  Straddle ---  
 Ruined Shale Packer ---

Initial Open 30  Shale Packer 250  Ruined Packer ---  
 Initial Shut-In 30  Extra Packer ---  Extra Copies ---  
 Final Flow 30  Extra Recorder --- Sub Total 0  
 Final Shut-In 30  Day Standby --- Total 1598.40  
 Accessibility --- MP/DST Disc't ---  
 Sub Total 1598.40

Approved By \_\_\_\_\_ Our Representative Brannan Lonsdale

Trilobite Testing Inc. shall not be liable for damaged of any kind of the property or personnel of the one for whom a test is made, or for any loss suffered or sustained, directly or indirectly, through the use of its equipment, or its statements or opinion concerning the results of any test, tools lost or damaged in the hole shall be paid for at cost by the party for whom the test is made.





# TRILOBITE TESTING INC.

1515 Commerce Parkway • Hays, Kansas 67601

## Test Ticket

NO. 58407

4/10

Well Name & No. Coddard #1 Test No. 2 Date 11/10/14  
 Company Jason Oil Company, LLC Elevation 2442 KB 2437 GL  
 Address 3718 83<sup>rd</sup> St PO Box 701 Russell, KS 67665  
 Co. Rep / Geo. Jeff Lawler Rig Royal #1  
 Location: Sec. 33 Twp. 2 S Rge. 24 W Co. Crawham State KS

Interval Tested 3836-3926 Zone Tested KC - "H-L"  
 Anchor Length 90' Drill Pipe Run 3830 Mud Wt. 9.4  
 Top Packer Depth 3831 Drill Collars Run — Vis 47  
 Bottom Packer Depth 3836 Wt. Pipe Run — WL 8.4  
 Total Depth 3926 Chlorides 300 ppm System LCM 2 1/2 #

Blow Description IF - BOB 23mins  
ISI - No blow  
FF - BOB 28mins  
FSI - gradic surface blow

| Rec        | Feet of        | %gas      | %oil      | %water    | %mud      |
|------------|----------------|-----------|-----------|-----------|-----------|
| <u>65</u>  | <u>GOWM</u>    | <u>10</u> | <u>15</u> | <u>25</u> | <u>50</u> |
| <u>125</u> | <u>OCM</u>     |           | <u>20</u> |           | <u>30</u> |
| <u>10</u>  | <u>GO</u>      | <u>10</u> | <u>90</u> |           |           |
|            | <u>55' QIP</u> |           |           |           |           |
|            |                |           |           |           |           |

Rec Total 200' BHT 112° Gravity 32 API RW @ — °F Chlorides — ppm  
 (A) Initial Hydrostatic 1906  Test 1150 T-On Location 0135  
 (B) First Initial Flow 18  Jars — T-Started 0157  
 (C) First Final Flow 68  Safety Joint — T-Open 0423  
 (D) Initial Shut-In 420  Circ Sub — T-Pulled 0653  
 (E) Second Initial Flow 73  Hourly Standby — T-Out 0859  
 (F) Second Final Flow 102  Mileage 146 RT 198.40 Comments —  
 (G) Final Shut-In 468  Sampler —  
 (H) Final Hydrostatic 1872  Straddle —  Ruined Shale Packer —

Initial Open 30  Shale Packer 250  Ruined Packer —  
 Initial Shut-In 45  Extra Packer —  Extra Copies —  
 Final Flow 30  Extra Recorder — Sub Total 0  
 Final Shut-In 45  Day Standby — Total 1598.40  
 Accessibility — MP/DST Disc't —  
 Sub Total 1598.40

Approved By — Our Representative Braman Lonsdale

Trilobite Testing Inc. shall not be liable for damaged of any kind of the property or personnel of the one for whom a test is made, or for any loss suffered or sustained, directly or indirectly, through the use of its equipment, or its statements or opinion concerning the results of any test, tools lost or damaged in the hole shall be paid for at cost by the party for whom the test is made.