

Sean Deenihan

Petroleum Geologist

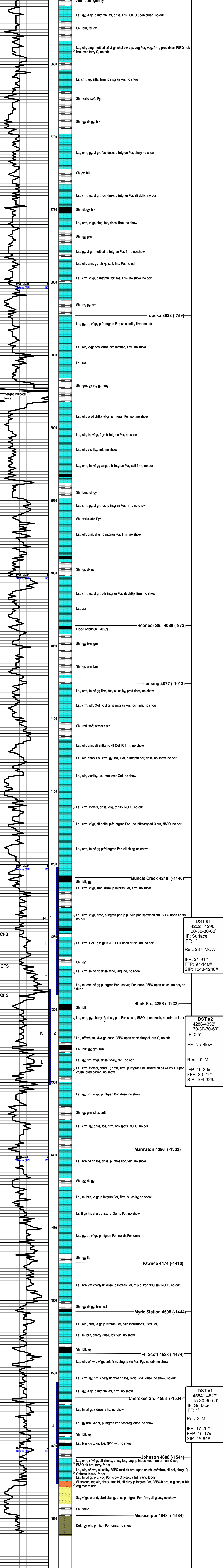
GEOLOGIST'S REPORT

DRILLING TIME AND SAMPLE LOG

COMPANY Coral Production Corporation		ELEVATIONS	
LEASE Sims #15-1	FIELD Wildcat	KB 3064'	DF _____
LOCATION 330' FSL & 430' FEL	SEC 15 TWPSP 9S RGE 32W	GL 3053'	Measurements Are All From Kelly Bushing
COUNTY Thomas	STATE Kansas	CONTRACTOR Murfin Rig #22	
SPUD 12/27/14	COMP 1/6/15	RTD 4660' LTD No Log	
MUD UP 3400'	TYPE MUD Chemical	CONDUCTOR _____	
SAMPLES SAVED FROM 3600'	TO RTD 3600'	SURFACE 8-5/8"	
DRILLING TIME KEPT FROM 3600'	TO RTD _____	PRODUCTION _____	
SAMPLES EXAMINED FROM 3600'	TO RTD _____	ELECTRICAL SURVEYS _____	
GEOLOGICAL SUPERVISION FROM 3600'		REFERENCE WELL Wilson #15-1	
FORMATION		Sample Tops	E-log Tops
Heaber Sh	4036 (-972)		
Lansing	4077 (-1013)		
Stark Shale	4296 (-1232)		
Marmaton	4396 (-1332)		
Johnson	4608 (-1544)		
Mississipi	4648 (-1584)		

REMARKS The Sims #15-1 did not encounter commercial oil deposits and was therefore plugged.

Respectfully Submitted,
Sean P. Deenihan



DST #1
4202'-4290'
30-30-30-60"
IF: Surface
FF: 1"
Rec: 287' MCW
IFP: 21-91#
FFP: 97-140#
SIP: 1243-1248#

DST #2
4286-4352'
30-30-30-60"
IF: 0.5"
FF: No Blow
Rec: 10' M
IFP: 19-20#
FFP: 20-27#
SIP: 104-326#

DST #1
4564'-4627'
15-30-30-60"
IF: Surface
FF: 1"
Rec: 3' M
IFP: 17-20#
FFP: 16-17#
SIP: 45-64#