



DRILL STEM TEST REPORT

Prepared For: **Coral Production Corporation**

1600 Stout ST STE 1500
Denver CO 80202

ATTN: Sean Deenihan

Sims #15-1

15-9s-32w Thomas,KS

Start Date: 2015.01.02 @ 23:35:00

End Date: 2015.01.03 @ 08:33:00

Job Ticket #: 61503 DST #: 1

Trilobite Testing, Inc
1515 Commerce Parkway Hays, KS 67601
ph: 785-625-4778 fax: 785-625-5620

Printed: 2015.01.07 @ 09:17:35



**TRILOBITE
TESTING, INC**

DRILL STEM TEST REPORT

Coral Production Corporation

15-9s-32w Thomas,KS

1600 Stout ST STE 1500
Denver CO 80202

Sims #15-1

Job Ticket: 61503

DST#: 1

ATTN: Sean Deenihan

Test Start: 2015.01.02 @ 23:35:00

GENERAL INFORMATION:

Formation: **LKC H,I,J**

Deviated: No Whipstock: ft (KB)

Time Tool Opened: 03:45:00

Time Test Ended: 08:33:00

Test Type: Conventional Bottom Hole (Initial)

Tester: Justin Harris

Unit No: 58

Interval: 4202.00 ft (KB) To 4290.00 ft (KB) (TVD)

Reference Elevations: 3064.00 ft (KB)

Total Depth: 4290.00 ft (KB) (TVD)

3053.00 ft (CF)

Hole Diameter: 7.88 inches Hole Condition: Poor

KB to GR/CF: 11.00 ft

Serial #: 6625 Outside

Press@RunDepth: 140.33 psig @ 4286.00 ft (KB)

Capacity: 8000.00 psig

Start Date: 2015.01.02

End Date:

2015.01.03

Last Calib.: 2015.01.03

Start Time: 23:35:01

End Time:

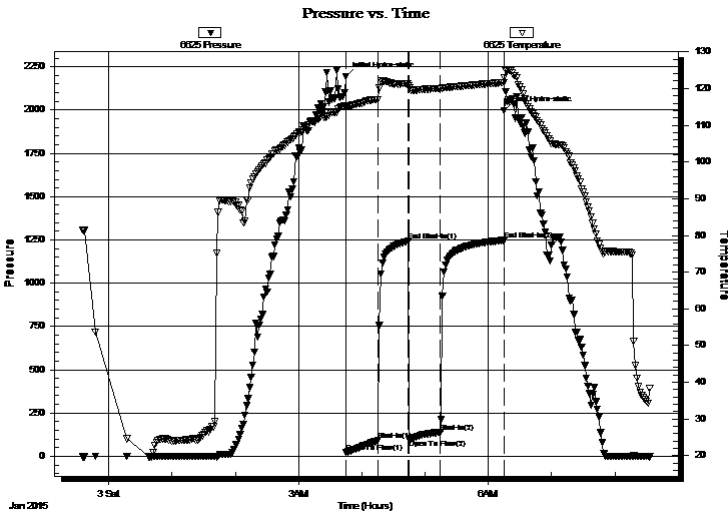
08:33:00

Time On Btm: 2015.01.03 @ 03:44:30

Time Off Btm: 2015.01.03 @ 06:15:00

TEST COMMENT: 30: Weak surface blow .
30: No Return.
30: Weak surface blow to 1"
60: No Return

PRESSURE SUMMARY



Time (Min.)	Pressure (psig)	Temp (deg F)	Annotation
0	2193.70	115.38	Initial Hydro-static
1	20.68	114.71	Open To Flow (1)
31	91.31	116.93	Shut-In(1)
60	1242.61	121.24	End Shut-In(1)
60	96.93	120.87	Open To Flow (2)
90	140.33	119.92	Shut-In(2)
150	1247.81	121.60	End Shut-In(2)
151	1997.26	122.88	Final Hydro-static

Recovery

Length (ft)	Description	Volume (bbl)
252.00	mcw 20m 80w	1.41
35.00	mcw 10m 90w	0.49

Gas Rates

	Choke (inches)	Pressure (psig)	Gas Rate (Mcf/d)



**TRILOBITE
TESTING, INC.**

DRILL STEM TEST REPORT

TOOL DIAGRAM

Coral Production Corporation

15-9s-32w Thomas,KS

1600 Stout ST STE 1500
Denver CO 80202

Sims #15-1

Job Ticket: 61503

DST#: 1

ATTN: Sean Deenihan

Test Start: 2015.01.02 @ 23:35:00

Tool Information

Drill Pipe:	Length: 3973.50 ft	Diameter: 3.80 inches	Volume: 55.74 bbl	Tool Weight:	2500.00 lb
Heavy Wt. Pipe:	Length: ft	Diameter: inches	Volume: - bbl	Weight set on Packer:	30000.00 lb
Drill Collar:	Length: 233.50 ft	Diameter: 2.25 inches	Volume: 1.15 bbl	Weight to Pull Loose:	75000.00 lb
			<u>Total Volume:</u>	Tool Chased	0.00 ft
				String Weight: Initial	62000.00 lb
Drill Pipe Above KB:	33.00 ft			Final	63000.00 lb
Depth to Top Packer:	4202.00 ft				
Depth to Bottom Packer:	ft				
Interval between Packers:	88.00 ft				
Tool Length:	116.00 ft				
Number of Packers:	2	Diameter:	6.75 inches		
Tool Comments:					

Tool Description

Tool Description	Length (ft)	Serial No.	Position	Depth (ft)	Accum. Lengths
Change Over Sub	1.00			4175.00	
Shut In Tool	5.00			4180.00	
Hydraulic tool	5.00			4185.00	
Jars	5.00			4190.00	
Safety Joint	3.00			4193.00	
Packer	5.00			4198.00	28.00 Bottom Of Top Packer
Packer	4.00			4202.00	
Stubb	1.00			4203.00	
Perforations	18.00			4221.00	
Change Over Sub	1.00			4222.00	
Drill Pipe	63.00			4285.00	
Change Over Sub	1.00			4286.00	
Recorder	0.00	6625	Outside	4286.00	
Recorder	0.00	8679	Inside	4286.00	
Bullnose	4.00			4290.00	88.00 Bottom Packers & Anchor

Total Tool Length: 116.00



**TRILOBITE
TESTING, INC**

DRILL STEM TEST REPORT

FLUID SUMMARY

Coral Production Corporation

15-9s-32w Thomas,KS

1600 Stout ST STE 1500
Denver CO 80202

Sims #15-1

Job Ticket: 61503

DST#: 1

ATTN: Sean Deenihan

Test Start: 2015.01.02 @ 23:35:00

Mud and Cushion Information

Mud Type: Gel Chem

Cushion Type:

Oil API:

0 deg API

Mud Weight: 10.00 lb/gal

Cushion Length:

ft

Water Salinity:

60000 ppm

Viscosity: 55.00 sec/qt

Cushion Volume:

bbbl

Water Loss: 9.18 in³

Gas Cushion Type:

Resistivity: ohm.m

Gas Cushion Pressure:

psig

Salinity: 500.00 ppm

Filter Cake: 1.00 inches

Recovery Information

Recovery Table

Length ft	Description	Volume bbl
252.00	mcw 20m 80w	1.408
35.00	mcw 10m 90w	0.491

Total Length: 287.00 ft Total Volume: 1.899 bbl

Num Fluid Samples: 0

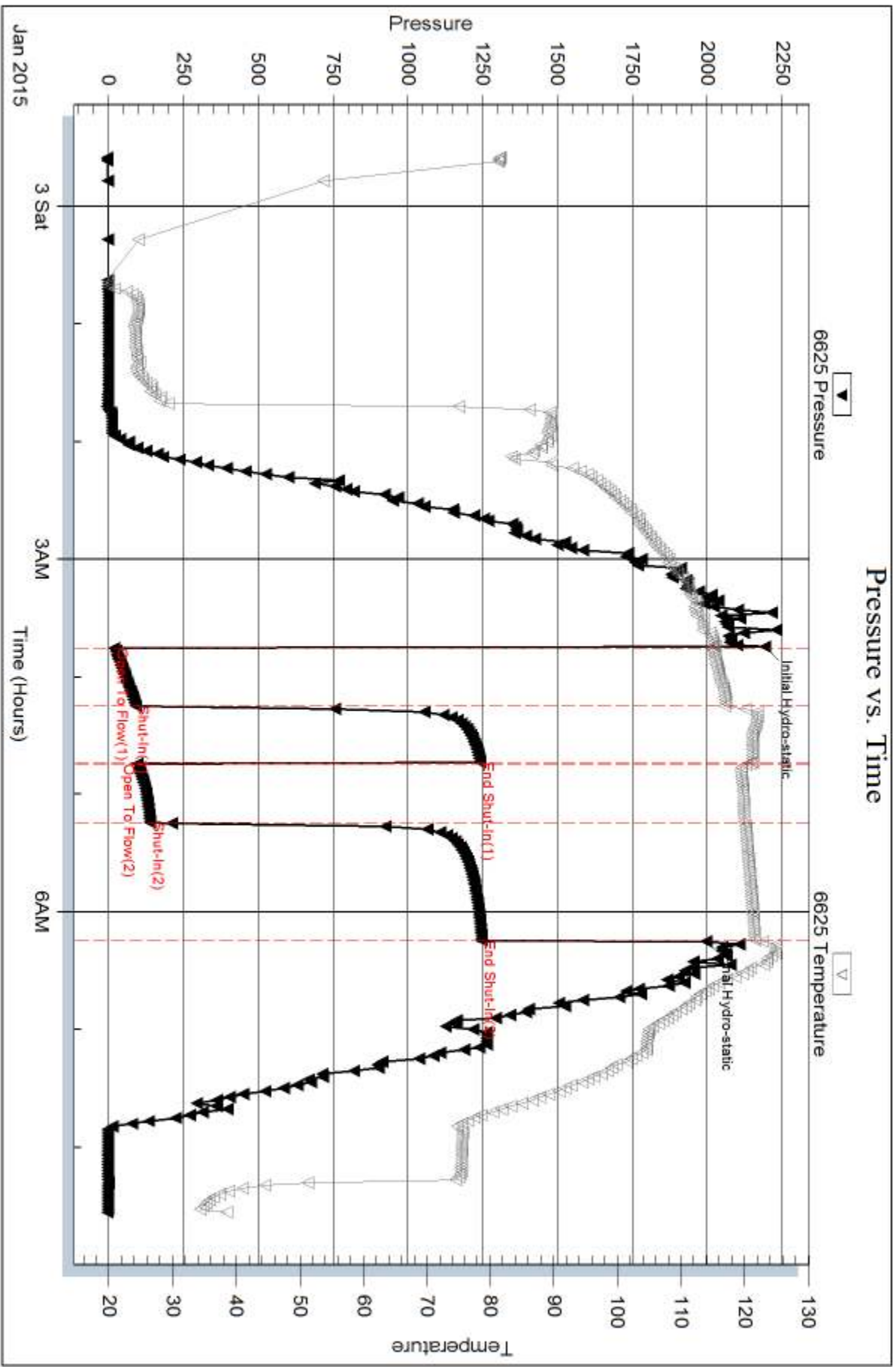
Num Gas Bombs: 0

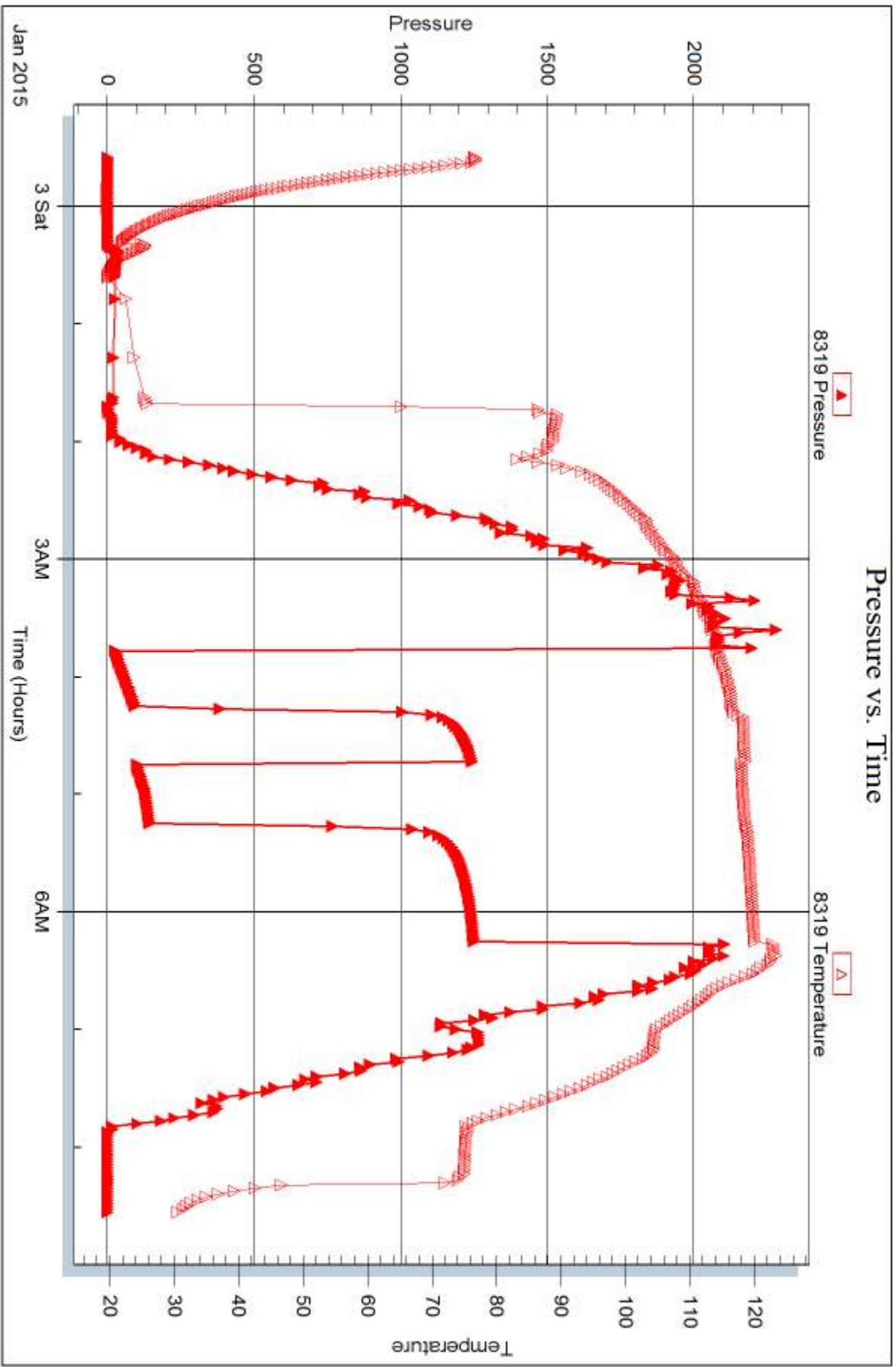
Serial #:

Laboratory Name:

Laboratory Location:

Recovery Comments: API RW .25 @ 25 F = 60000 Chlorides







DRILL STEM TEST REPORT

Prepared For: **Coral Production Corporation**

1600 Stout ST STE 1500
Denver CO 80202

ATTN: Sean Deenihan

Sims #15-1

15-9s-32w Thomas,KS

Start Date: 2015.01.03 @ 21:05:00

End Date: 2015.01.04 @ 06:19:30

Job Ticket #: 61504 DST #: 2

Trilobite Testing, Inc
1515 Commerce Parkway Hays, KS 67601
ph: 785-625-4778 fax: 785-625-5620

Printed: 2015.01.07 @ 09:17:05



**TRILOBITE
TESTING, INC**

DRILL STEM TEST REPORT

Coral Production Corporation

15-9s-32w Thomas,KS

1600 Stout ST STE 1500
Denver CO 80202

Sims #15-1

Job Ticket: 61504

DST#: 2

ATTN: Sean Deenihan

Test Start: 2015.01.03 @ 21:05:00

GENERAL INFORMATION:

Formation: **LKC K-L**

Deviated: No Whipstock: ft (KB)

Time Tool Opened: 01:21:30

Time Test Ended: 06:19:30

Test Type: Conventional Bottom Hole (Reset)

Tester: Justin Harris

Unit No: 58

Interval: 4286.00 ft (KB) To 4352.00 ft (KB) (TVD)

Reference Elevations: 3064.00 ft (KB)

Total Depth: 4352.00 ft (KB) (TVD)

3053.00 ft (CF)

Hole Diameter: 7.88 inches Hole Condition: Poor

KB to GR/CF: 11.00 ft

Serial #: 6625 Outside

Press@RunDepth: 26.70 psig @ 4348.00 ft (KB)

Capacity: 8000.00 psig

Start Date: 2015.01.03

End Date:

2015.01.04

Last Calib.: 2015.01.04

Start Time: 21:05:01

End Time:

06:19:30

Time On Btm: 2015.01.04 @ 01:21:00

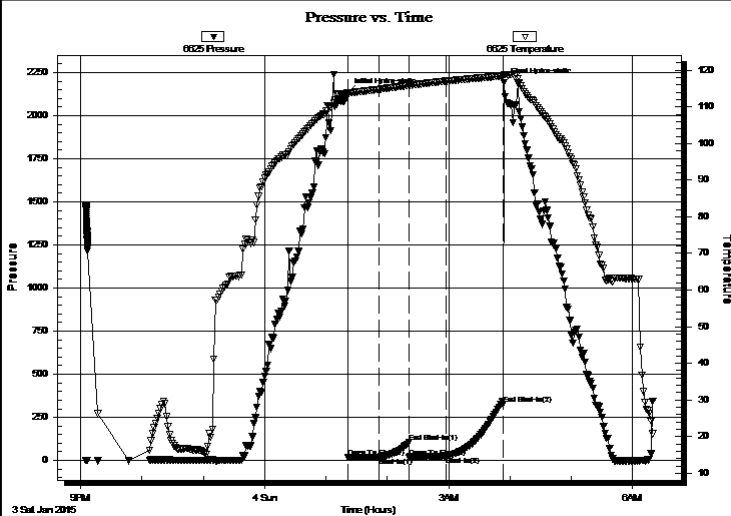
Time Off Btm: 2015.01.04 @ 03:54:00

TEST COMMENT: 30: Weak surface blow 1/2".

30: No Return.

30: No Blow .

60: No Return.



PRESSURE SUMMARY

Time (Min.)	Pressure (psig)	Temp (deg F)	Annotation
0	2135.11	113.92	Initial Hydro-static
1	18.85	113.71	Open To Flow (1)
31	19.57	114.82	Shut-In(1)
60	104.37	115.86	End Shut-In(1)
61	20.15	115.88	Open To Flow (2)
97	26.70	117.06	Shut-In(2)
153	326.07	118.46	End Shut-In(2)
153	2191.80	118.76	Final Hydro-static

Recovery

Length (ft)	Description	Volume (bbl)
10.00	Mud	0.05

Gas Rates

Choke (inches)	Pressure (psig)	Gas Rate (Mcf/d)

* Recovery from multiple tests



**TRILOBITE
TESTING, INC.**

DRILL STEM TEST REPORT

TOOL DIAGRAM

Coral Production Corporation

15-9s-32w Thomas,KS

1600 Stout ST STE 1500
Denver CO 80202

Sims #15-1

Job Ticket: 61504

DST#: 2

ATTN: Sean Deenihan

Test Start: 2015.01.03 @ 21:05:00

Tool Information

Drill Pipe:	Length: 4034.50 ft	Diameter: 3.80 inches	Volume: 56.59 bbl	Tool Weight:	2500.00 lb
Heavy Wt. Pipe:	Length: ft	Diameter: inches	Volume: - bbl	Weight set on Packer:	30000.00 lb
Drill Collar:	Length: 233.50 ft	Diameter: 2.25 inches	Volume: 1.15 bbl	Weight to Pull Loose:	75000.00 lb
			<u>Total Volume:</u>	Tool Chased	0.00 ft
			- bbl	String Weight: Initial	63000.00 lb
Drill Pipe Above KB:	10.00 ft			Final	63000.00 lb
Depth to Top Packer:	4286.00 ft				
Depth to Bottom Packer:	ft				
Interval between Packers:	66.00 ft				
Tool Length:	94.00 ft				
Number of Packers:	2	Diameter:	6.75 inches		
Tool Comments:					

Tool Description

Tool Description	Length (ft)	Serial No.	Position	Depth (ft)	Accum. Lengths
Change Over Sub	1.00			4259.00	
Shut In Tool	5.00			4264.00	
Hydraulic tool	5.00			4269.00	
Jars	5.00			4274.00	
Safety Joint	3.00			4277.00	
Packer	5.00			4282.00	28.00 Bottom Of Top Packer
Packer	4.00			4286.00	
Stubb	1.00			4287.00	
Perforations	28.00			4315.00	
Change Over Sub	1.00			4316.00	
Drill Pipe	31.00			4347.00	
Change Over Sub	1.00			4348.00	
Recorder	0.00	6625	Outside	4348.00	
Recorder	0.00	8679	Inside	4348.00	
Bullnose	4.00			4352.00	66.00 Bottom Packers & Anchor

Total Tool Length: 94.00



**TRILOBITE
TESTING, INC**

DRILL STEM TEST REPORT

FLUID SUMMARY

Coral Production Corporation

15-9s-32w Thomas,KS

1600 Stout ST STE 1500
Denver CO 80202

Sims #15-1

Job Ticket: 61504

DST#: 2

ATTN: Sean Deenihan

Test Start: 2015.01.03 @ 21:05:00

Mud and Cushion Information

Mud Type: Gel Chem

Cushion Type:

Oil API:

0 deg API

Mud Weight: 9.00 lb/gal

Cushion Length:

ft

Water Salinity:

0 ppm

Viscosity: 48.00 sec/qt

Cushion Volume:

bbf

Water Loss: 7.59 in³

Gas Cushion Type:

Resistivity: ohm.m

Gas Cushion Pressure:

psig

Salinity: 500.00 ppm

Filter Cake: 1.00 inches

Recovery Information

Recovery Table

Length ft	Description	Volume bbf
10.00	Mud	0.049

Total Length: 10.00 ft Total Volume: 0.049 bbf

Num Fluid Samples: 0

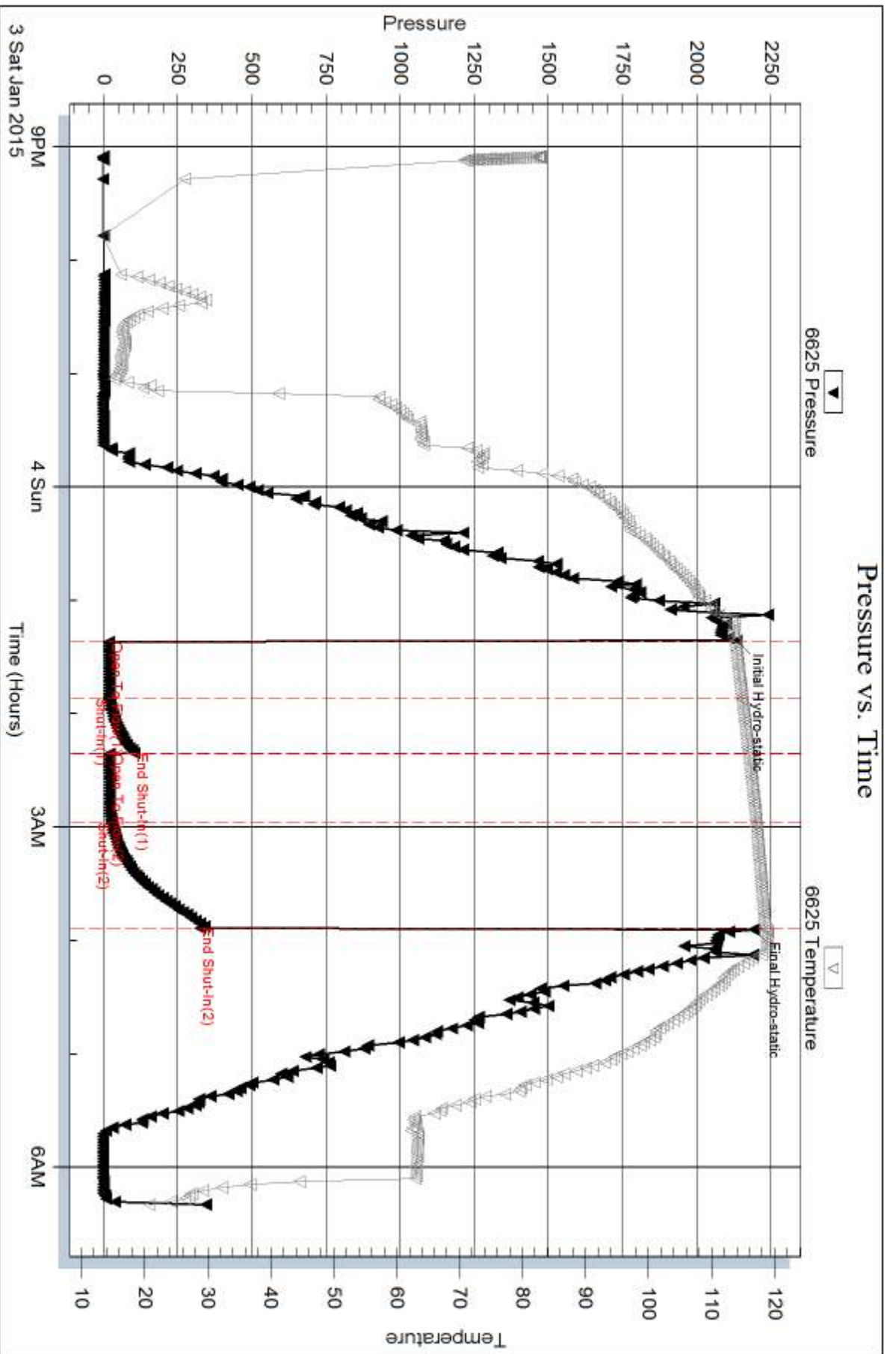
Num Gas Bombs: 0

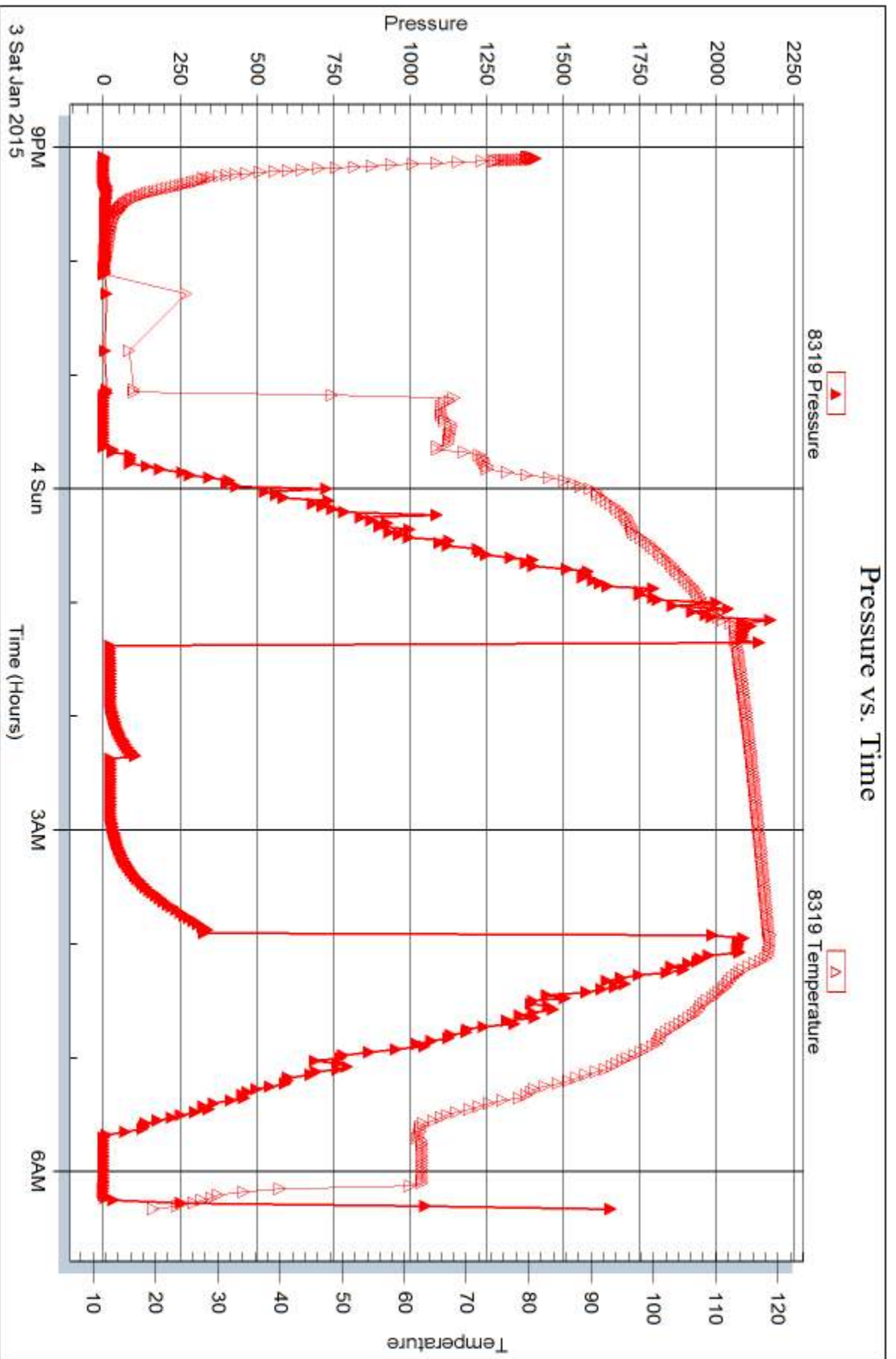
Serial #:

Laboratory Name:

Laboratory Location:

Recovery Comments:







DRILL STEM TEST REPORT

Prepared For: **Coral Production Corporation**

1600 Stout ST STE 1500
Denver CO 80202

ATTN: Sean Deenihan

Sims #15-1

15-9s-32w Thomas,KS

Start Date: 2015.01.05 @ 07:15:00

End Date: 2015.01.05 @ 15:31:30

Job Ticket #: 61505 DST #: 3

Trilobite Testing, Inc
1515 Commerce Parkway Hays, KS 67601
ph: 785-625-4778 fax: 785-625-5620

Printed: 2015.01.07 @ 09:08:53



TRILOBITE TESTING, INC.

DRILL STEM TEST REPORT

Coral Production Corporation

15-9s-32w Thomas,KS

1600 Stout ST STE 1500
Denver CO 80202

Sims #15-1

ATTN: Sean Deenihan

Job Ticket: 61505

DST#: 3

Test Start: 2015.01.05 @ 07:15:00

GENERAL INFORMATION:

Formation: **Johnson**

Deviated: No Whipstock: ft (KB)

Time Tool Opened: 10:20:30

Time Test Ended: 15:31:30

Test Type: Conventional Bottom Hole (Reset)

Tester: Justin Harris

Unit No: 58

Interval: 4564.00 ft (KB) To 4627.00 ft (KB) (TVD)

Total Depth: 4627.00 ft (KB) (TVD)

Hole Diameter: 7.88 inches Hole Condition: Poor

Reference Elevations: 3064.00 ft (KB)

3053.00 ft (CF)

KB to GR/CF: 11.00 ft

Serial #: 6625 Outside

Press@RunDepth: 16.98 psig @ 4623.00 ft (KB)

Start Date: 2015.01.05

End Date:

2015.01.05

Start Time: 07:15:01

End Time:

15:31:30

Capacity: 8000.00 psig

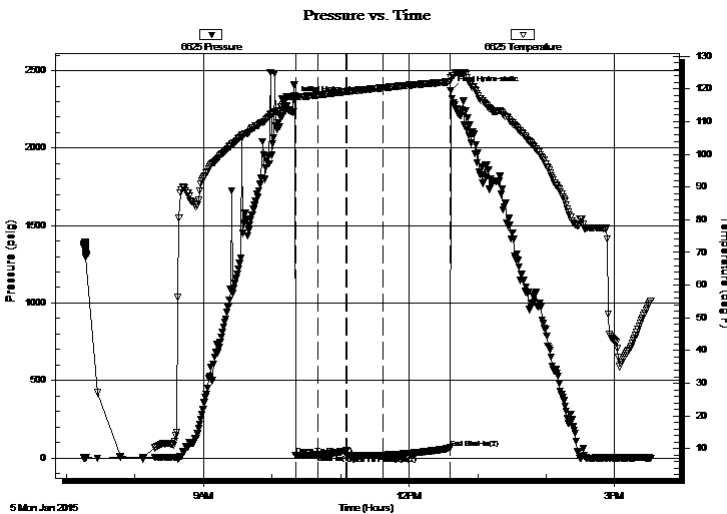
Last Calib.: 2015.01.05

Time On Btm: 2015.01.05 @ 10:20:00

Time Off Btm: 2015.01.05 @ 12:36:30

TEST COMMENT: 15: Weak surface blow to 1/2"
30: Weak surface blow died in 5 mins
45: Weak surface blow Died 10 mins.
60: No Return.

PRESSURE SUMMARY



Time (Min.)	Pressure (psig)	Temp (deg F)	Annotation
0	2308.38	118.02	Initial Hydro-static
1	16.70	117.71	Open To Flow (1)
20	19.65	118.12	Shut-In(1)
45	45.15	119.15	End Shut-In(1)
46	16.36	119.18	Open To Flow (2)
77	16.98	120.34	Shut-In(2)
136	63.64	122.20	End Shut-In(2)
137	2373.14	123.29	Final Hydro-static

Recovery

Length (ft)	Description	Volume (bbl)
3.00	Mud	0.01

* Recovery from multiple tests

Gas Rates

Choke (inches)	Pressure (psig)	Gas Rate (Mcf/d)



TRILOBITE TESTING, INC

DRILL STEM TEST REPORT

Coral Production Corporation

15-9s-32w Thomas,KS

1600 Stout ST STE 1500
Denver CO 80202

Sims #15-1

Job Ticket: 61505

DST#: 3

ATTN: Sean Deenihan

Test Start: 2015.01.05 @ 07:15:00

GENERAL INFORMATION:

Formation: **Johnson**

Deviated: No Whipstock: ft (KB)

Time Tool Opened: 10:20:30

Time Test Ended: 15:31:30

Test Type: Conventional Bottom Hole (Reset)

Tester: Justin Harris

Unit No: 58

Interval: 4564.00 ft (KB) To 4627.00 ft (KB) (TVD)

Reference Elevations: 3064.00 ft (KB)

Total Depth: 4627.00 ft (KB) (TVD)

3053.00 ft (CF)

Hole Diameter: 7.88 inches Hole Condition: Poor

KB to GR/CF: 11.00 ft

Serial #: 8319

Press@RunDepth: psig @ ft (KB)

Capacity: 8000.00 psig

Start Date: 2015.01.05

End Date: 2015.01.05

Last Calib.: 2015.01.05

Start Time: 07:15:01

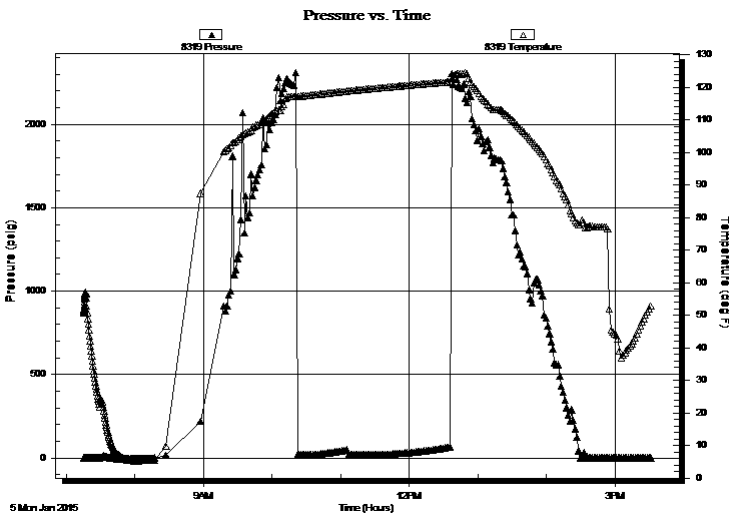
End Time: 15:32:00

Time On Btm:

Time Off Btm:

TEST COMMENT: 15: Weak surface blow to 1/2"
30: Weak surface blow died in 5 mins
45: Weak surface blow Died 10 mins.
60: No Return.

PRESSURE SUMMARY



Time (Min.)	Pressure (psig)	Temp (deg F)	Annotation

Recovery

Length (ft)	Description	Volume (bbl)
3.00	Mud	0.01

Gas Rates

Choke (inches)	Pressure (psig)	Gas Rate (Mcf/d)

* Recovery from multiple tests



**TRILOBITE
TESTING, INC.**

DRILL STEM TEST REPORT

TOOL DIAGRAM

Coral Production Corporation

15-9s-32w Thomas,KS

1600 Stout ST STE 1500
Denver CO 80202

Sims #15-1

Job Ticket: 61505

DST#: 3

ATTN: Sean Deenihan

Test Start: 2015.01.05 @ 07:15:00

Tool Information

Drill Pipe:	Length: 4318.50 ft	Diameter: 3.80 inches	Volume: 60.58 bbl	Tool Weight:	2500.00 lb
Heavy Wt. Pipe:	Length: ft	Diameter: inches	Volume: - bbl	Weight set on Packer:	30000.00 lb
Drill Collar:	Length: 233.50 ft	Diameter: 2.25 inches	Volume: 1.15 bbl	Weight to Pull Loose:	75000.00 lb
			<u>Total Volume:</u>	Tool Chased	0.00 ft
			- bbl	String Weight: Initial	64000.00 lb
Drill Pipe Above KB:	16.00 ft			Final	64000.00 lb
Depth to Top Packer:	4564.00 ft				
Depth to Bottom Packer:	ft				
Interval between Packers:	63.00 ft				
Tool Length:	91.00 ft				
Number of Packers:	2	Diameter: 6.75 inches			
Tool Comments:					

Tool Description

Tool Description	Length (ft)	Serial No.	Position	Depth (ft)	Accum. Lengths
Change Over Sub	1.00			4537.00	
Shut In Tool	5.00			4542.00	
Hydraulic tool	5.00			4547.00	
Jars	5.00			4552.00	
Safety Joint	3.00			4555.00	
Packer	5.00			4560.00	28.00 Bottom Of Top Packer
Packer	4.00			4564.00	
Stubb	1.00			4565.00	
Perforations	25.00			4590.00	
Change Over Sub	1.00			4591.00	
Drill Pipe	31.00			4622.00	
Change Over Sub	1.00			4623.00	
Recorder	0.00	6625	Outside	4623.00	
Recorder	0.00	8679	Inside	4623.00	
Bullnose	4.00			4627.00	63.00 Bottom Packers & Anchor

Total Tool Length: 91.00



**TRILOBITE
TESTING, INC**

DRILL STEM TEST REPORT

FLUID SUMMARY

Coral Production Corporation

15-9s-32w Thomas,KS

1600 Stout ST STE 1500
Denver CO 80202

Sims #15-1

Job Ticket: 61505

DST#: 3

ATTN: Sean Deenihan

Test Start: 2015.01.05 @ 07:15:00

Mud and Cushion Information

Mud Type: Gel Chem

Cushion Type:

Oil API:

0 deg API

Mud Weight: 9.00 lb/gal

Cushion Length:

ft

Water Salinity:

0 ppm

Viscosity: 81.00 sec/qt

Cushion Volume:

bbf

Water Loss: 6.79 in³

Gas Cushion Type:

Resistivity: ohm.m

Gas Cushion Pressure:

psig

Salinity: 1100.00 ppm

Filter Cake: 1.00 inches

Recovery Information

Recovery Table

Length ft	Description	Volume bbf
3.00	Mud	0.015

Total Length: 3.00 ft Total Volume: 0.015 bbf

Num Fluid Samples: 0

Num Gas Bombs: 0

Serial #:

Laboratory Name:

Laboratory Location:

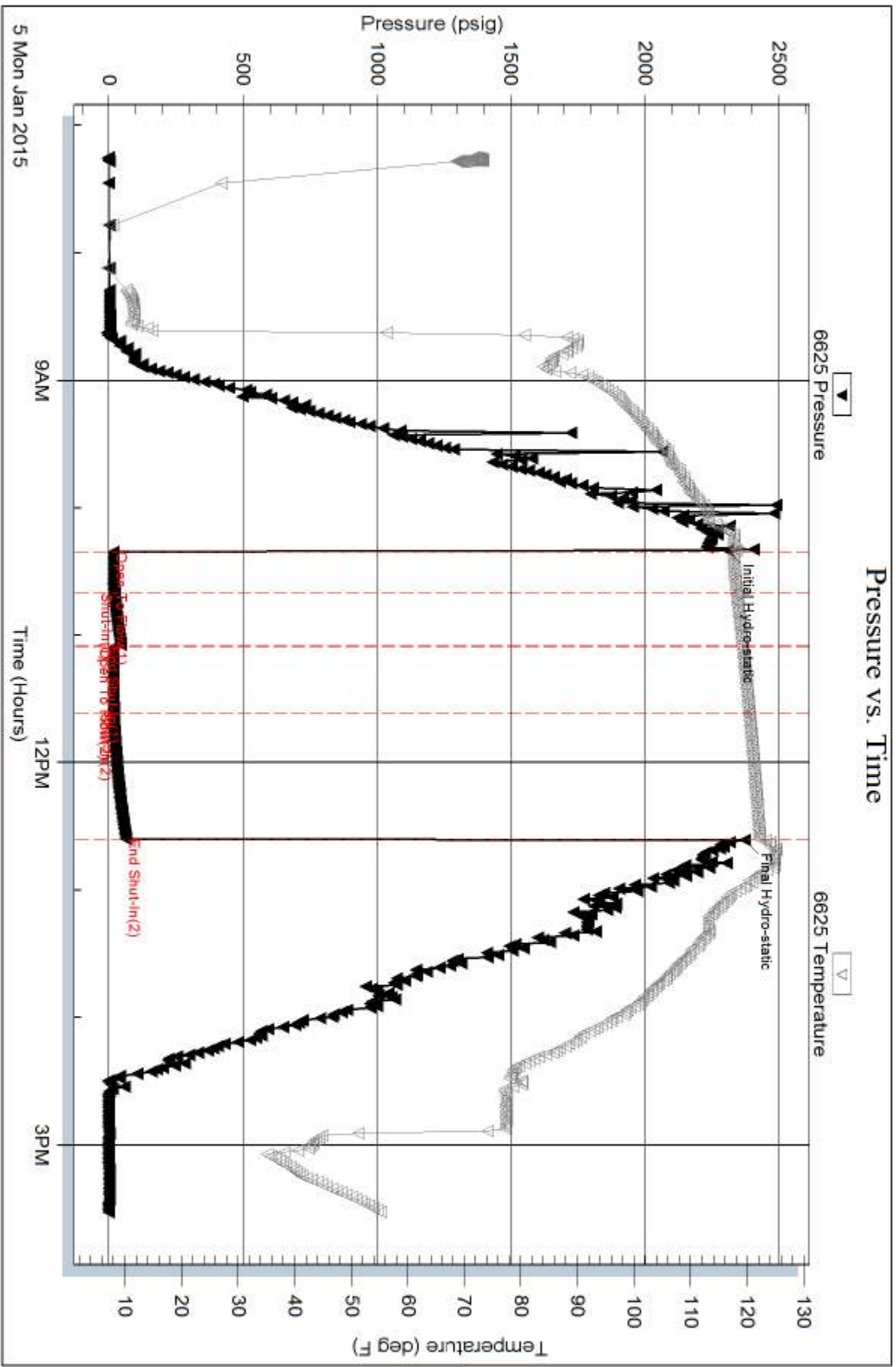
Recovery Comments:

Serial #: 6625

Outside Coral Production Corporation

Sims #15-1

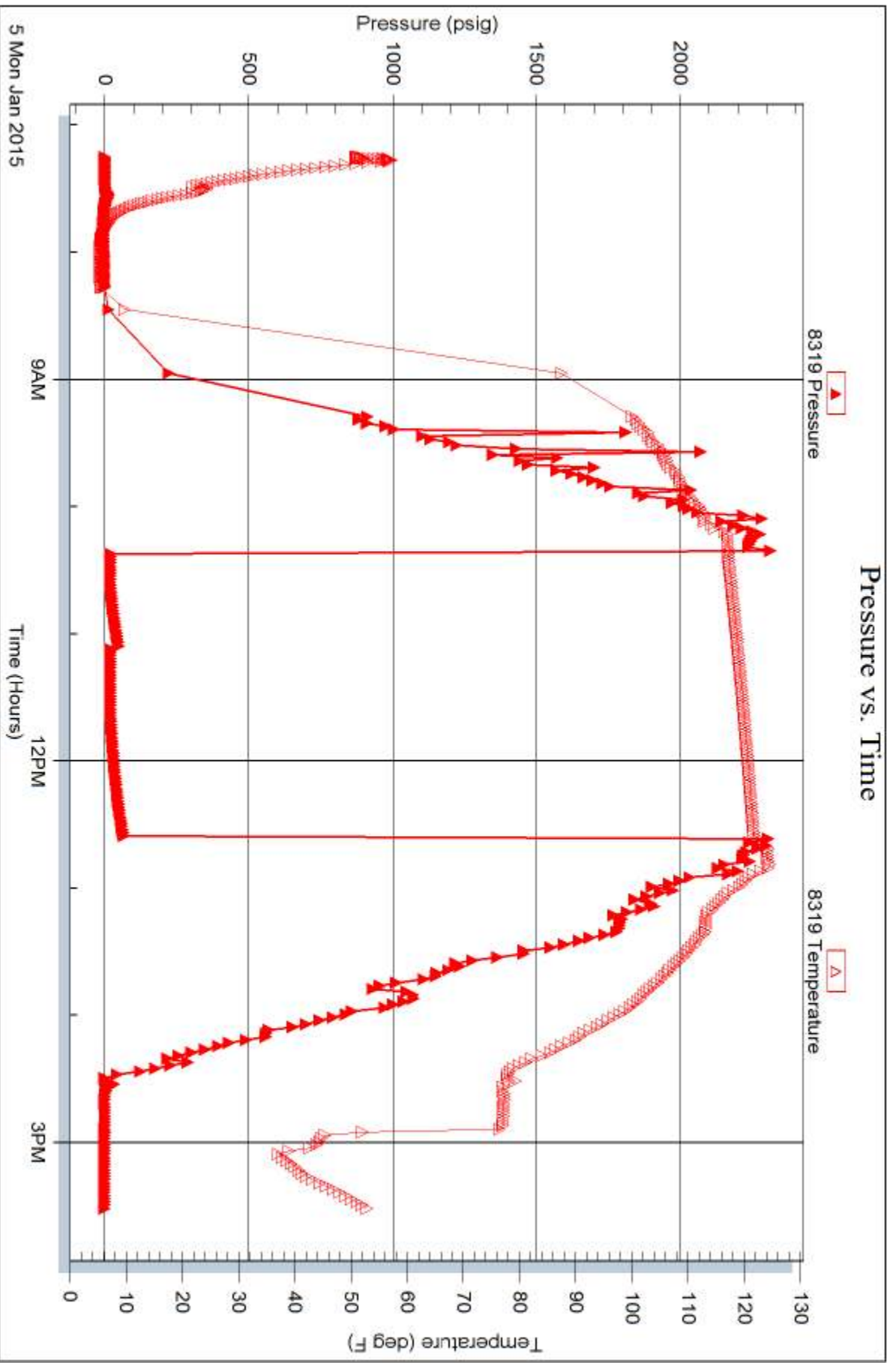
DST Test Number: 3

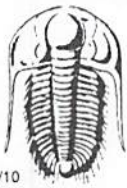


Trilobite Testing, Inc

Ref. No: 61505

Printed: 2015.01.07 @ 09:08:54





TRILOBITE TESTING INC.

1515 Commerce Parkway • Hays, Kansas 67601

Test Ticket

NO. **61503**

Well Name & No. Sims 15-1 Test No. 1 Date 1/2/15 1/3/15
 Company Coral Production Corporation Elevation 3044 KB 3053 GL
 Address 1600 STOUT ST STE 1500 DENVER CO, 80202
 Co. Rep / Geo. Sean Dreehan Rig Murfin 22
 Location: Sec. 15 Twp. 9S Rge. 32W Co. Thomas State KS

Interval Tested 4202 4290 Zone Tested LKC (H,I,J)
 Anchor Length 88 Drill Pipe Run 3973.5 Mud Wt. 9.5
 Top Packer Depth 4198 Drill Collars Run 0 Vis 55
 Bottom Packer Depth 4202 Wt. Pipe Run 233.5 WL 9.2
 Total Depth 4290 Chlorides -500 ppm System LCM 2

Blow Description 30 Weak surface blow
30 No Return
30 Weak surface to 1"
60 No Return

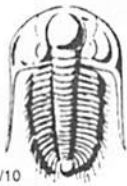
Rec	Feet of	%gas	%oil	%water	%mud
<u>35</u>	<u>msw</u>			<u>90</u>	<u>10</u>
<u>252</u>	<u>msw</u>			<u>80</u>	<u>20</u>

Rec Total 287 BHT 122 Gravity - API RW .25 @ 25 °F Chlorides 60000 ppm
 (A) Initial Hydrostatic 2194 Test 1150 T-On Location 2255
 (B) First Initial Flow 21 Jars 250 T-Started 2335
 (C) First Final Flow 91 Safety Joint _____ T-Open 0343
 (D) Initial Shut-In 1243 Circ Sub N/C T-Pulled 0613
 (E) Second Initial Flow 97 Hourly Standby _____ T-Out 0833
 (F) Second Final Flow 140 Mileage 116 BT 116 Comments _____
 (G) Final Shut-In 1248 Sampler _____
 (H) Final Hydrostatic 1997 Straddle _____

Initial Open 30 Shale Packer 250 Ruined Shale Packer _____
 Initial Shut-In 30 Extra Packer _____ Ruined Packer _____
 Final Flow 30 Extra Recorder _____ Extra Copies _____
 Final Shut-In 60 Day Standby _____ Sub Total 0
 Accessibility _____ Total 1766
 Sub Total 1766 MP/DST Disc't _____

Approved By [Signature] Our Representative [Signature]

Trilobite Testing Inc. shall not be liable for damaged of any kind of the property or personnel of the one for whom a test is made, or for any loss suffered or sustained, directly or indirectly, through the use of its equipment, or its statements or opinion concerning the results of any test, tools lost or damaged in the hole shall be paid for at cost by the party for whom the test is made.



TRILOBITE TESTING INC.

1515 Commerce Parkway • Hays, Kansas 67601

Test Ticket

NO. 61504

Well Name & No. Sims 15-1 Test No. 2 Date 1/3 1/4
 Company Coral Production Corporation Elevation 3064 KB 3053 GL
 Address 1400 Stout St STE 1500 Denver Co, 80202
 Co. Rep / Geo. Sean Deenihan Rig Murfin 22
 Location: Sec. 15 Twp. 9S Rge. 34W Co. Thomas State KS

Interval Tested 4284 4352 Zone Tested LKC (K,L)
 Anchor Length 66 Drill Pipe Run 4034.5 Mud Wt. 9.4
 Top Packer Depth 4282 Drill Collars Run 233.5 Vis 48
 Bottom Packer Depth 4284 Wt. Pipe Run Ø WL 7.4
 Total Depth 4352 Chlorides 500 ppm System LCM 3

Blow Description 30 West surface blow 1/2"
30 No Return
30 No Blow
60 No Return

Rec	Feet of	%gas	%oil	%water	%mud
<u>10</u>	<u>mud</u>				

Rec Total 10 BHT 119 Gravity — API RW — @ — °F Chlorides — ppm

(A) Initial Hydrostatic <u>2135</u>	<input checked="" type="checkbox"/> Test <u>1150</u>	T-On Location <u>20:25</u>
(B) First Initial Flow <u>19</u>	<input checked="" type="checkbox"/> Jars <u>250</u>	T-Started <u>21:05</u>
(C) First Final Flow <u>20</u>	<input type="checkbox"/> Safety Joint	T-Open <u>01:23</u>
(D) Initial Shut-In <u>104</u>	<input checked="" type="checkbox"/> Circ Sub <u>N/C</u>	T-Pulled <u>03:53</u>
(E) Second Initial Flow <u>20</u>	<input type="checkbox"/> Hourly Standby	T-Out <u>06:19</u>
(F) Second Final Flow <u>27</u>	<input checked="" type="checkbox"/> Mileage <u>116 RT 116</u>	Comments
(G) Final Shut-In <u>324</u>	<input type="checkbox"/> Sampler	
(H) Final Hydrostatic <u>2192</u>	<input type="checkbox"/> Straddle	

Initial Open 30
 Initial Shut-In 30
 Final Flow 30
 Final Shut-In 60

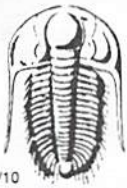
Shale Packer 250
 Extra Packer
 Extra Recorder
 Day Standby
 Accessibility

Sub Total 1766

Ruined Shale Packer
 Ruined Packer
 Extra Copies
 Sub Total 0
 Total 1766
 MP/DST Disc't

Approved By _____ Our Representative [Signature]

Trilobite Testing Inc. shall not be liable for damaged of any kind of the property or personnel of the one for whom a test is made, or for any loss suffered or sustained, directly or indirectly, through the use of its equipment, or its statements or opinion concerning the results of any test, tools lost or damaged in the hole shall be paid for at cost by the party for whom the test is made.



TRILOBITE TESTING INC.

1515 Commerce Parkway • Hays, Kansas 67601

Test Ticket

NO. **61505**

4/10

Well Name & No. Sims 15-1 Test No. 3 Date 1/5
 Company Coral Production Corporation Elevation 3014 KB 3053 GL
 Address 1600 Stuart St STE 1500 Denver Co, 80202
 Co. Rep / Geo. Sean Deenihan Rig Murfin #22
 Location: Sec. 15 Twp. 9S Rge. 34W Co. Thomas State Ks

Interval Tested 4564 4627 Zone Tested _____
 Anchor Length 43 Drill Pipe Run 4318.5 Mud Wt. 9.4
 Top Packer Depth 4560 Drill Collars Run 233.5 Vis 811
 Bottom Packer Depth 4544 Wt. Pipe Run Ø WL 6.8
 Total Depth 4627 Chlorides 1100 ppm System LCM 6 1/2

Blow Description 15 weak surface blow to 1/2"
30 weak surface blow fixed 5 min
30 weak surface blow fixed 10 min
60 no Return

Rec	Feet of	%gas	%oil	%water	%mud
<u>3</u>	<u>mud</u>			<u>100</u>	
Rec	Feet of	%gas	%oil	%water	%mud
Rec	Feet of	%gas	%oil	%water	%mud
Rec	Feet of	%gas	%oil	%water	%mud
Rec	Feet of	%gas	%oil	%water	%mud

Rec Total 3 BHT 122 Gravity — API RW — @ — °F Chlorides — ppm

(A) Initial Hydrostatic 2308 Test 1150 T-On Location 6:55
 (B) First Initial Flow 17 Jars 250 T-Started 7:15
 (C) First Final Flow 20 Safety Joint _____ T-Open 10:20
 (D) Initial Shut-In 45 Circ Sub N/C T-Pulled 12:35
 (E) Second Initial Flow 14 Hourly Standby _____ T-Out 1:53
 (F) Second Final Flow 17 Mileage 116 RT 116
 (G) Final Shut-In 44 Sampler _____
 (H) Final Hydrostatic 2373 Straddle _____
 Shale Packer 250 Ruined Shale Packer _____
 Extra Packer _____ Ruined Packer _____
 Extra Recorder _____ Sub Total 0
 Day Standby _____ Total 1766
 Accessibility _____ MP/DST Disc't _____
 Sub Total 1766

Approved By _____ Our Representative [Signature]

TriLOBITE TESTING Inc. shall not be liable for damaged of any kind of the property or personnel of the one for whom a test is made, or for any loss suffered or sustained, directly or indirectly, through the use of its equipment, or its statements or opinion concerning the results of any test, tools lost or damaged in the hole shall be paid for at cost by the party for whom the test is made.