



**TRILOBITE TESTING, INC**

# DRILL STEM TEST REPORT

Woolsey Operating Co. LLC

**12-35s-12w Barber Ks.**

125 N. Market, Ste. 1000  
Wichita Ks. 67202

**Sternberger B#3**

Job Ticket: 57856

**DST#: 2**

ATTN: Bill Klaver

Test Start: 2014.09.25 @ 05:46:31

## GENERAL INFORMATION:

Formation: **Misener**

Deviated: No Whipstock: ft (KB)

Time Tool Opened: 07:53:31

Time Test Ended: 13:08:01

Test Type: Conventional Bottom Hole (Reset)

Tester: Gary Pevoteaux

Unit No: 56

**Interval: 5026.00 ft (KB) To 5132.00 ft (KB) (TVD)**

Reference Elevations: 1361.00 ft (KB)

Total Depth: 5132.00 ft (KB) (TVD)

1349.00 ft (CF)

Hole Diameter: 7.88 inches Hole Condition: Poor

KB to GR/CF: 12.00 ft

**Serial #: 8352 Outside**

Press@RunDepth: 544.32 psig @ 5027.00 ft (KB)

Capacity: 8000.00 psig

Start Date: 2014.09.25

End Date:

2014.09.25

Last Calib.:

2014.09.25

Start Time: 05:46:36

End Time:

13:08:00

Time On Btm:

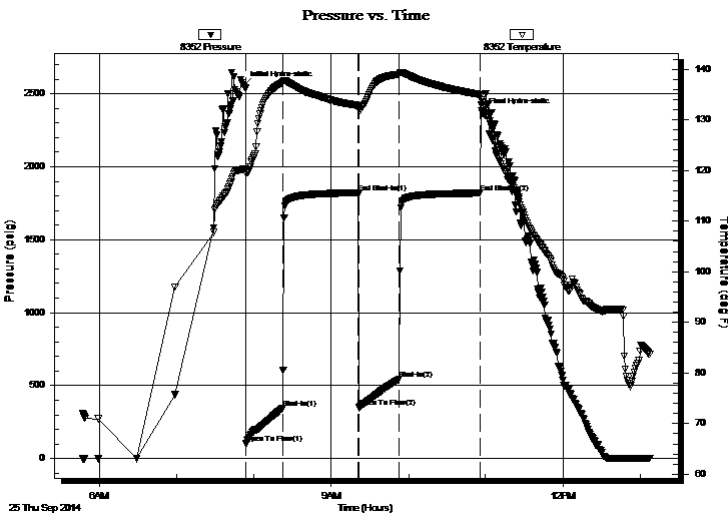
2014.09.25 @ 07:51:46

Time Off Btm:

2014.09.25 @ 10:57:31

**TEST COMMENT:** IF: Strong blow . B.O.B. in 3 mins.  
IS: Weak blow . Increase to 2".  
FF: Fair to strong blow . B.O.B. in 14 mins.  
FS: Weak blow . Increase to 2 1/2".

## PRESSURE SUMMARY



Time (Min.)	Pressure (psig)	Temp (deg F)	Annotation
0	2551.95	120.30	Initial Hydro-static
2	104.49	119.44	Open To Flow (1)
31	344.61	137.31	Shut-In(1)
89	1821.18	132.78	End Shut-In(1)
90	350.03	132.24	Open To Flow (2)
121	544.32	139.00	Shut-In(2)
184	1819.42	134.98	End Shut-In(2)
186	2366.96	133.51	Final Hydro-static

## Recovery

Length (ft)	Description	Volume (bbl)
671.00	GCMW 5%g 95%w / Rw .08@87deg	7.72
190.00	GCMW w/o specs 6%g 24%m 70%w	2.67
125.00	GCMW w/o specs 5%g 46%w 49%m	1.75
150.00	SGCM 3%g /Trace of GIP	2.10

## Gas Rates

	Choke (inches)	Pressure (psig)	Gas Rate (Mcf/d)

\* Recovery from multiple tests



**TRILOBITE  
TESTING, INC**

# DRILL STEM TEST REPORT

**FLUID SUMMARY**

Woolsey Operating Co. LLC

**12-35s-12w Barber Ks.**

125 N. Market, Ste. 1000  
Wichita Ks. 67202

**Sternberger B#3**

Job Ticket: 57856

**DST#: 2**

ATTN: Bill Klaver

Test Start: 2014.09.25 @ 05:46:31

## Mud and Cushion Information

Mud Type: Gel Chem

Cushion Type:

Oil API:

deg API

Mud Weight: 9.00 lb/gal

Cushion Length:

ft

Water Salinity:

79000 ppm

Viscosity: 63.00 sec/qt

Cushion Volume:

bbbl

Water Loss: 9.59 in<sup>3</sup>

Gas Cushion Type:

Resistivity: 0.00 ohm.m

Gas Cushion Pressure:

psig

Salinity: 5000.00 ppm

Filter Cake: 0.20 inches

## Recovery Information

Recovery Table

Length ft	Description	Volume bbbl
671.00	GCW 5%g 95%w / Rw .08@87deg	7.718
190.00	GCMW w/o specs 6%g 24%m 70%w	2.665
125.00	GCWM w o specs 5%g 46%w 49%m	1.753
150.00	SGCM 3%g /Trace of GIP	2.104

Total Length: 1136.00 ft

Total Volume: 14.240 bbl

Num Fluid Samples: 0

Num Gas Bombs: 0

Serial #: none

Laboratory Name:

Laboratory Location:

Recovery Comments: LCM 12# p/bbl

