



Dual Induction Log

DIGITAL LOG (785) 625-3858

API No. 15-009-25,596-00-00	Company Vess Oil Corporation	
	Well Hagen "B" No.1	
	Field Chase-Silica	
	County Barton	State Kansas
Location SW SW NE NW 1177' FNL & 1486' FWL		Other Services CNL/CDL MEL
Sec: 28	Twp: 20S	Rge: 11W
Permanent Datum Ground Level		Elevation 1782
Log Measured From Kelly Bushing		5 Ft. Above Perm. Datum
Drilling Measured From Kelly Bushing		K.B. 1787 D.F. G.L. 1782
Date	10/11/2011	
Run Number	One	
Depth Driller	3410	
Depth Logger	3410	
Bottom Logged Interval	3409	
Top Log Interval	500	
Casing Driller	8,625 @ 523	
Casing Logger	523	
Bit Size	7.875	
Type Fluid in Hole	Chemical	
Salinity, ppm CL	9,200	
Density / Viscosity	8.8	53
pH / Fluid Loss	9.5	10.4
Source of Sample	Flowline	
Rm @ Meas. Temp	.19 @	69
Rmf @ Meas. Temp	.14 @	69
Rmc @ Meas. Temp	.26 @	69
Source of Rmf / Rmc	Charts	
Rm @ BHT	.12 @	110
Operating Rig Time	3 1/2 Hours	
Max Rec. Temp. F	110	
Equipment Number	17	
Location	Hays	

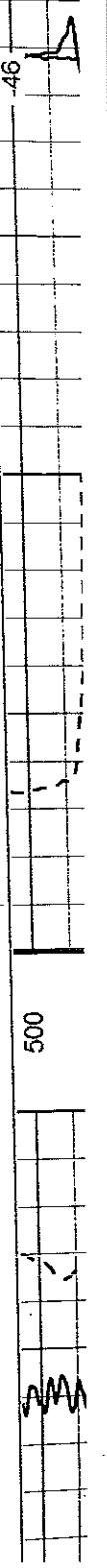
All interpretations are opinions based on inferences from electrical or other measurements and we cannot and do not guarantee the accuracy or correctness of any interpretation, and we shall not, except in the case of gross or willful negligence on our part, be liable or responsible for any loss, ts, damages, or expenses incurred or sustained by anyone resulting from any interpretation made by any of our officers, agents or employees. These interpretations are also subject to our general terms and conditions set out in our current Price Schedule.

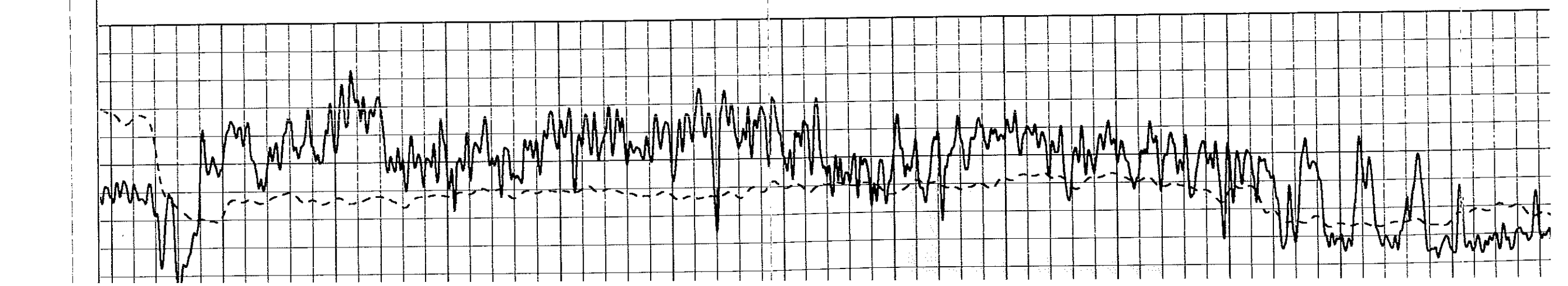
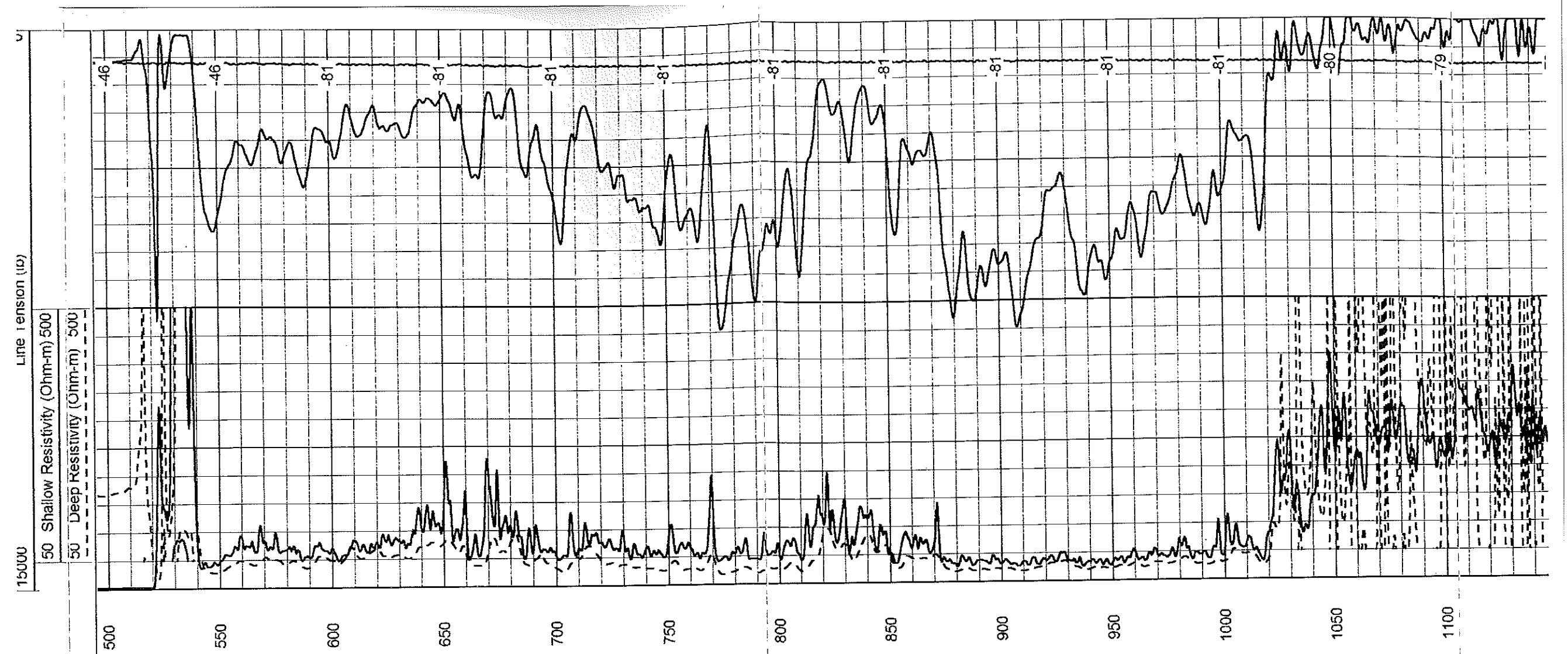
Comments

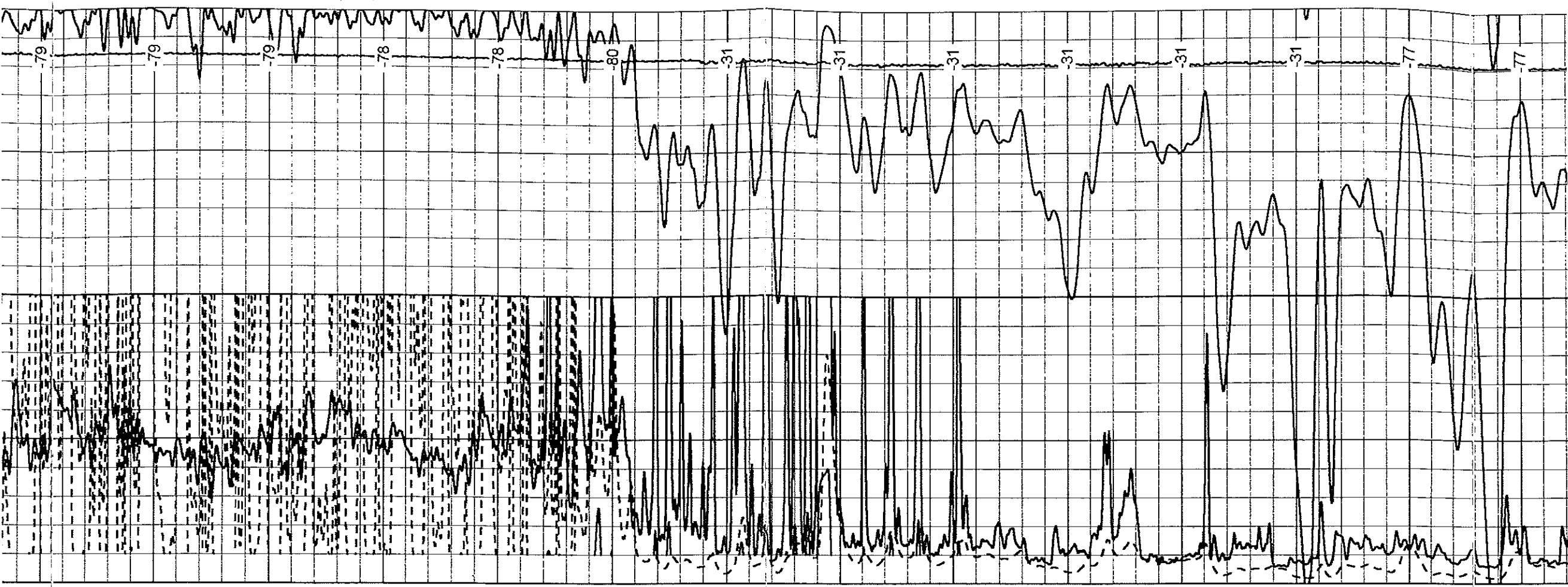
Thank you for using Log-Tech, Inc.
 (785) 625-3858
 Great Bend KS,
 S to 5 Mille Blktp, 11 E to 120 Rd,
 1/4 S E Into

Database File: vess_hagen-1.db
 Dataset Pathname: stack/pass3.1
 Presentation Format: dil2in
 Dataset Creation: Tue Oct 11 12:49:52 2011 by Calc SOC 110722
 Charted by: Depth in Feet scaled 1:600

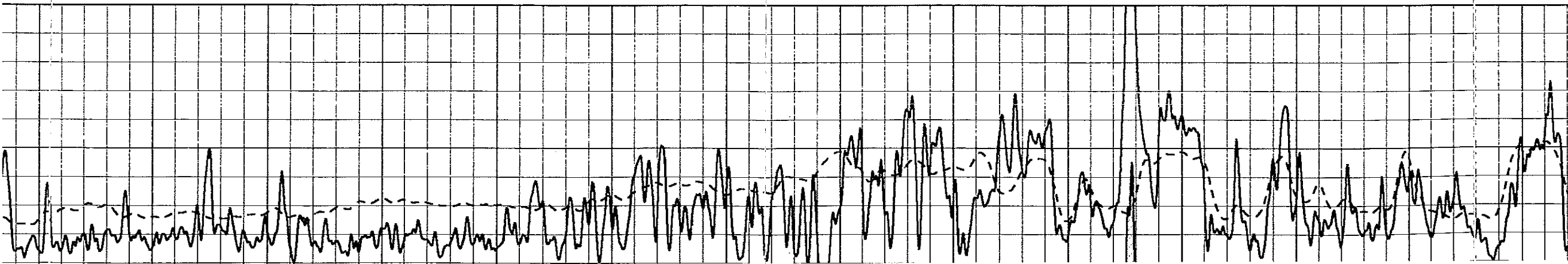
Gamma Ray (GAPI)	150
Shallow Resistivity (Ohm-m)	50
Deep Resistivity (Ohm-m)	50
Conductivity (mmho/m)	0
Line Tension (lb)	0
Shallow Resistivity (Ohm-m)	500
Deep Resistivity (Ohm-m)	500

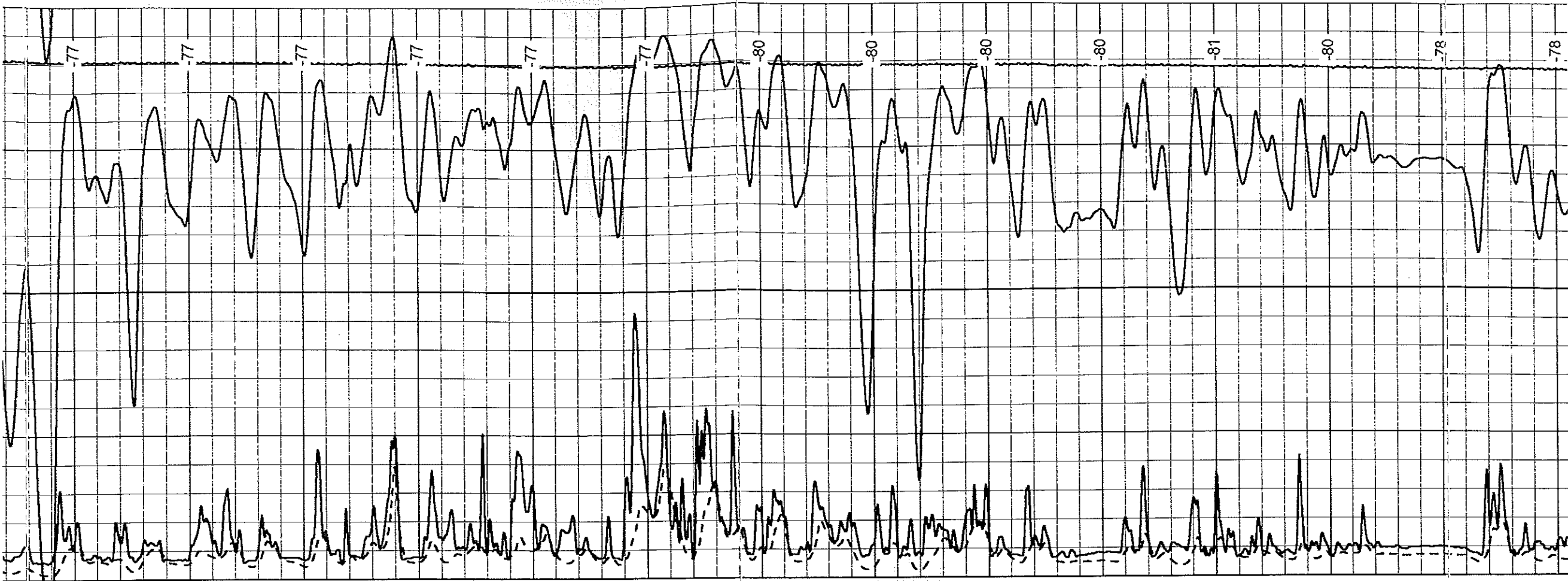




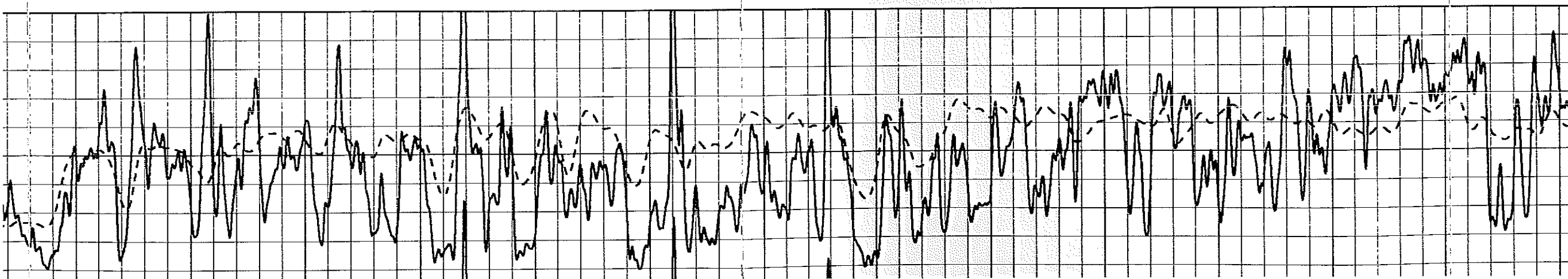


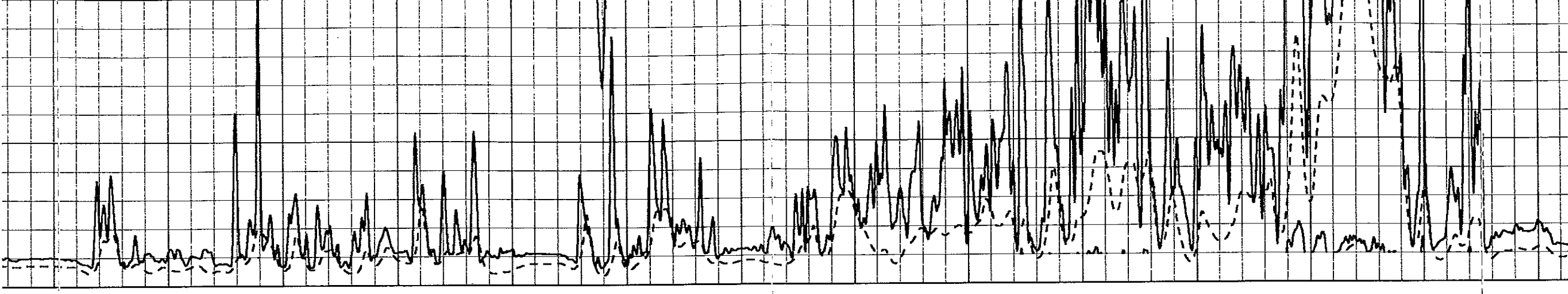
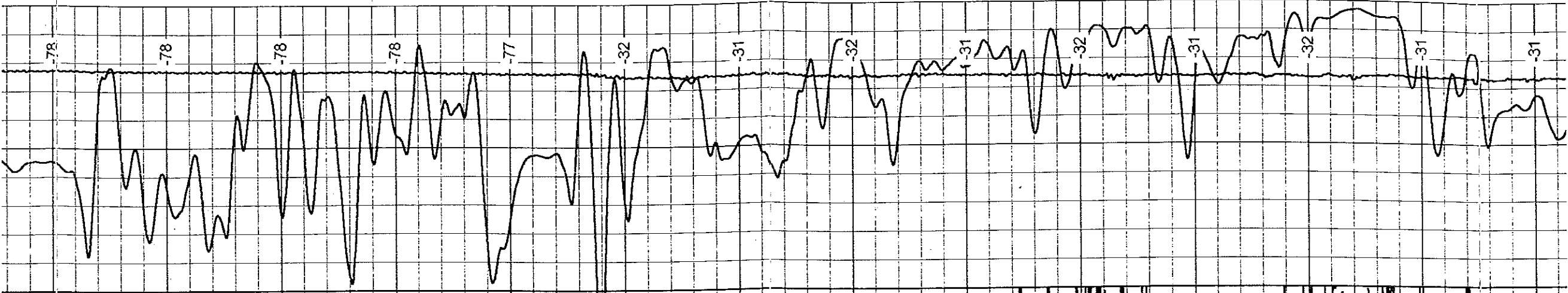
1100 1150 1200 1250 1300 1350 1400 1450 1500 1550 1600 1650 1700 1750



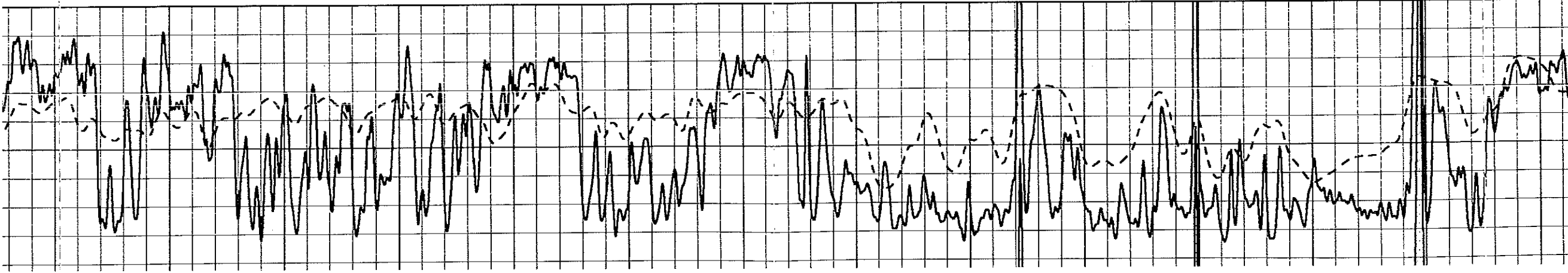


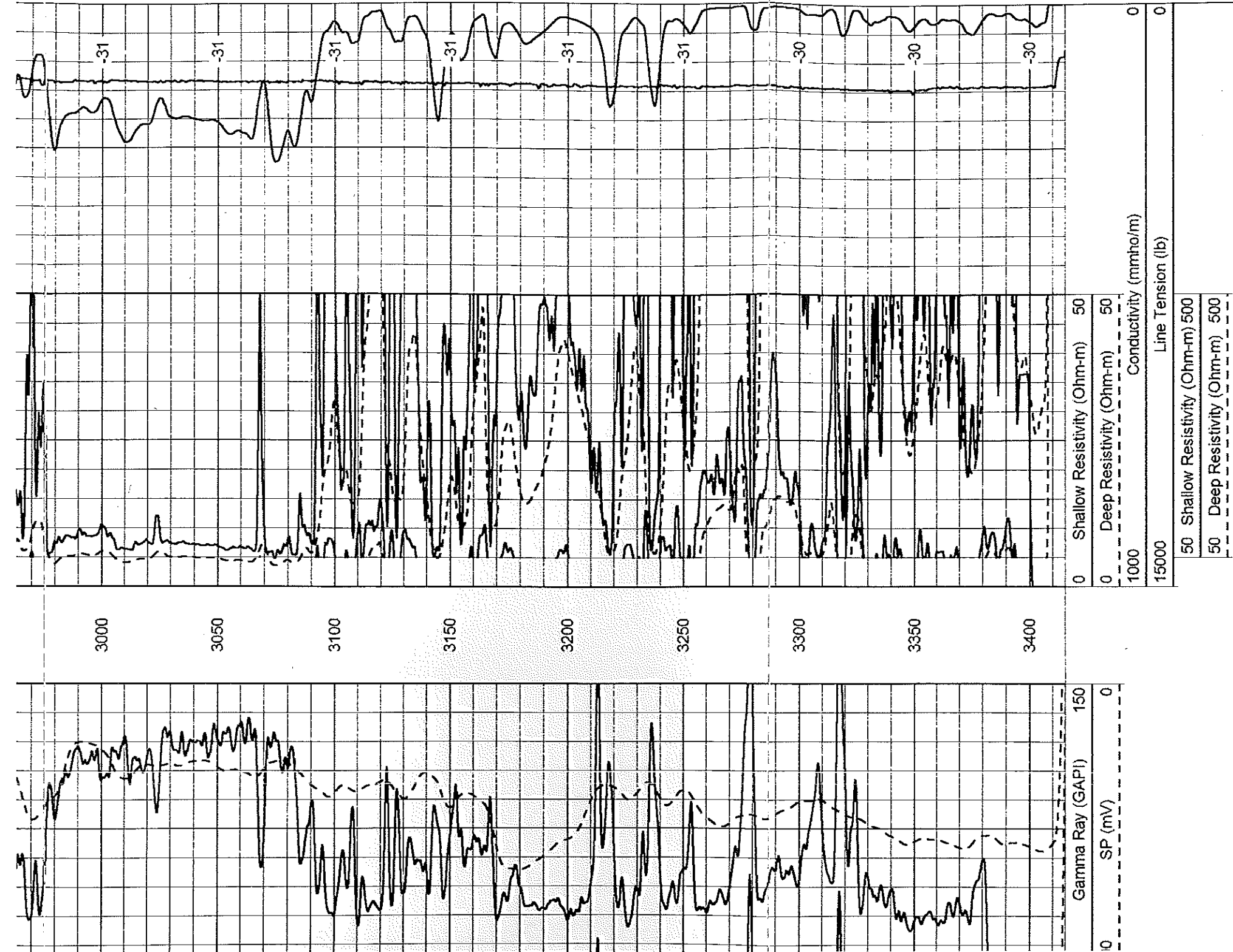
1750 1800 1850 1900 1950 2000 2050 2100 2150 2200 2250 2300 2350 2400



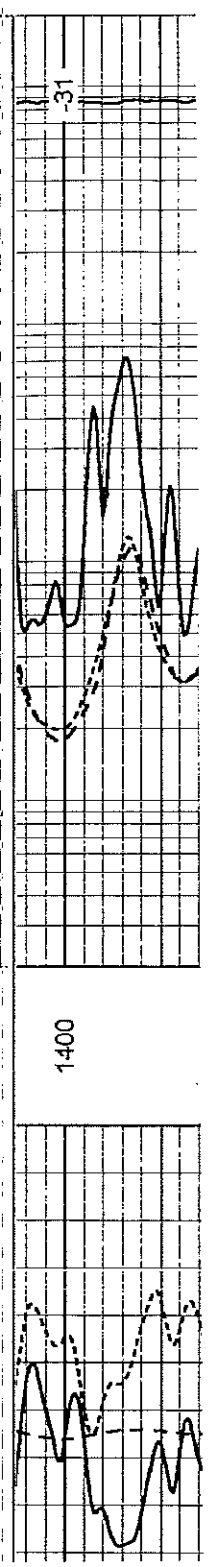
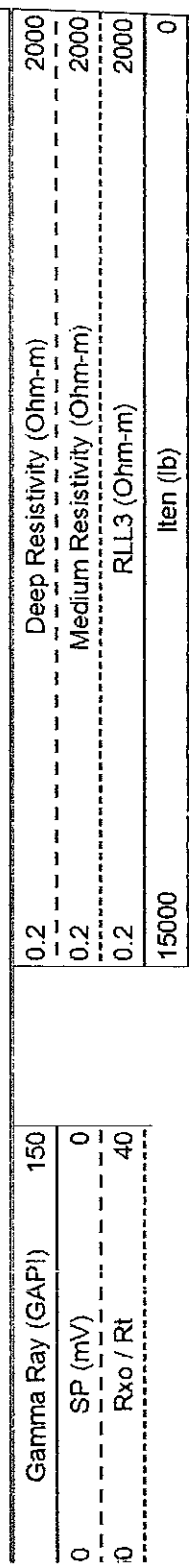


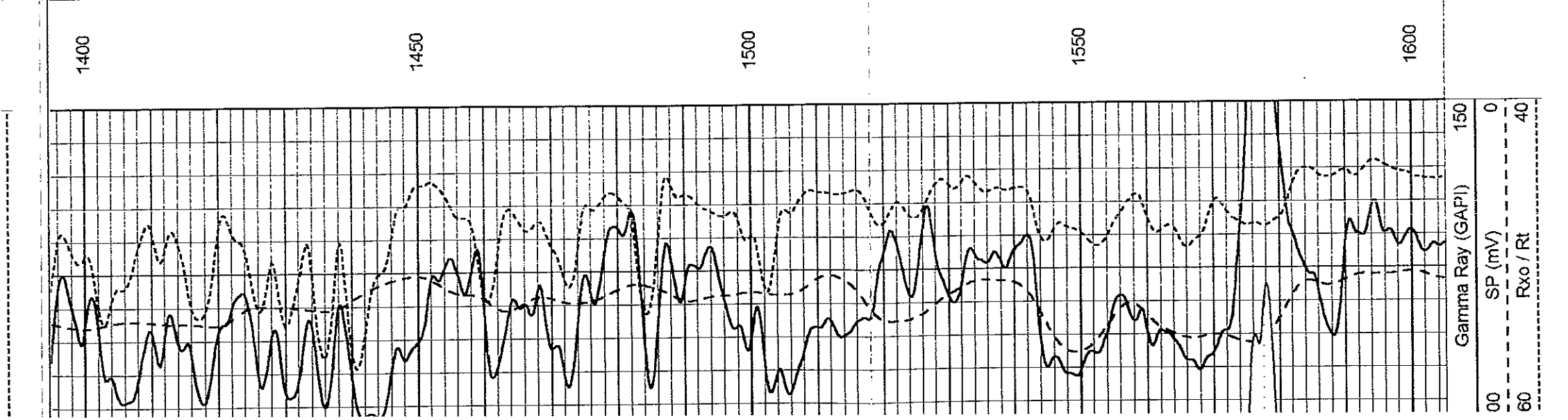
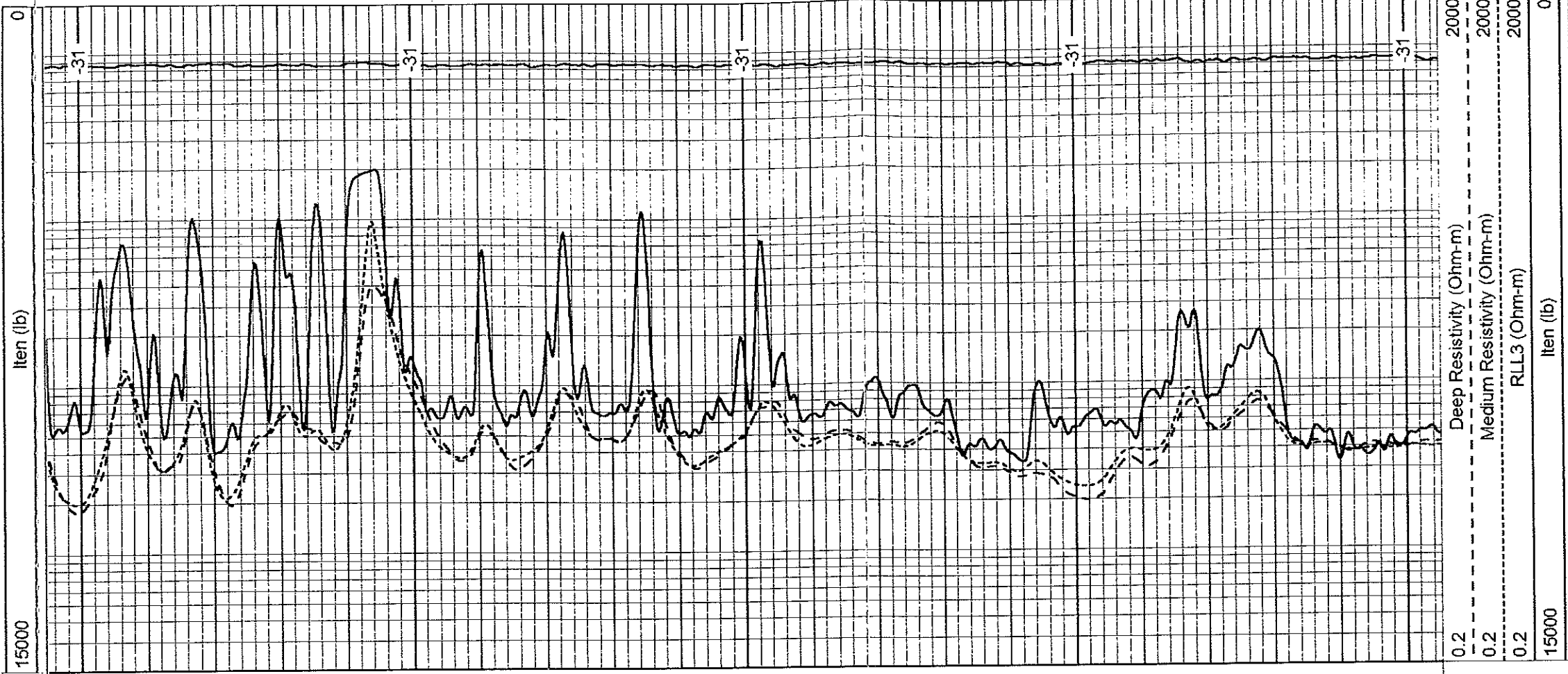
2350 2400 2450 2500 2550 2600 2650 2700 2750 2800 2850 2900 2950 3000





Database File: vess_hagen-1.db
 Dataset Pathname: stack/pass3.1
 Representation Format: dil
 Dataset Creation: Tue Oct 11 12:49:52 2011 by Calc SOC 110722
 Charted by: Depth in Feet scaled 1:240



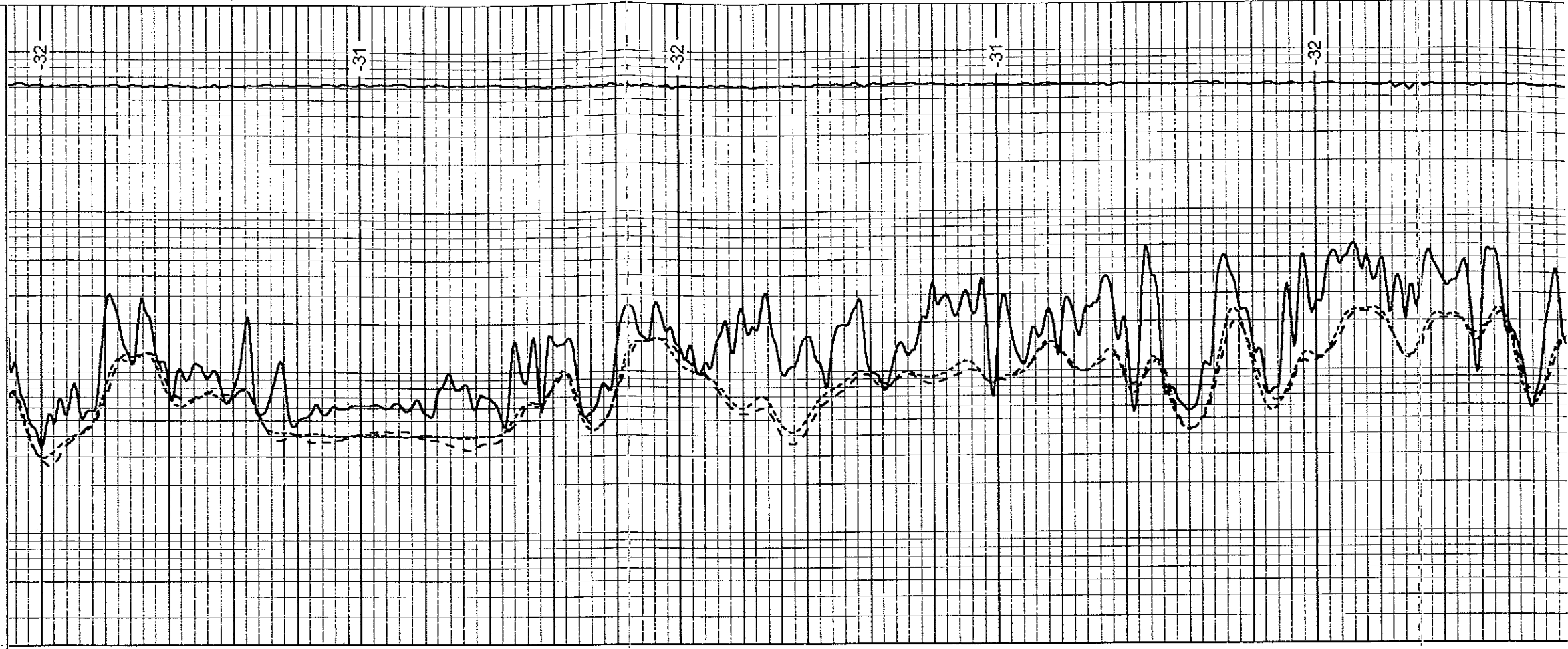
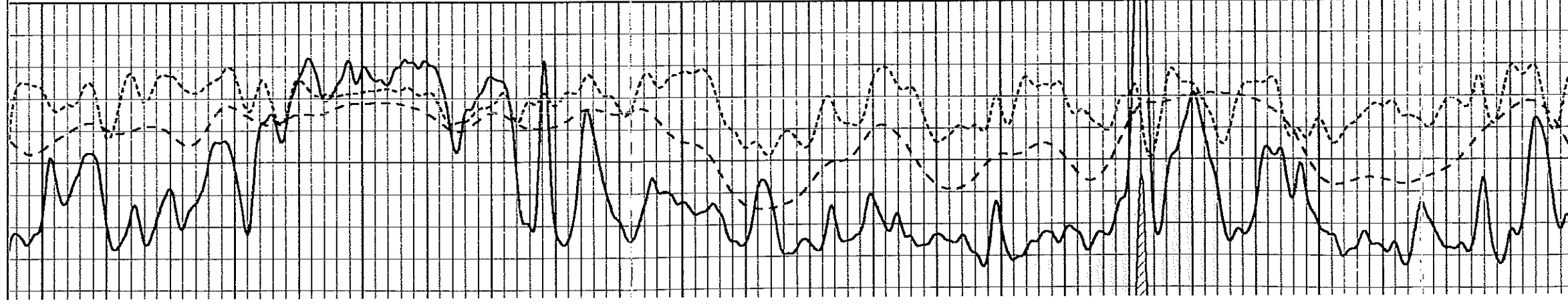


Database File: vess_hagen-1.db
 Dataset Pathname: stack/pass3.1
 Presentation Format: dl
 Dataset Creator: Tue Oct 11 12:49:52 2011 by Gato SOC 110722
 Charted by: Depth in Feet scaled 1:240

Gamma Ray (GAPI)	150	Deep Resistivity (Ohm-m)	2000
SP (mV)	0	Medium Resistivity (Ohm-m)	2000
Rxo / Rt	40	RLL3 (Ohm-m)	2000

Gamma Ray (GAPI) 150
SP (mV) 0
Rxo / Rt 40

0.2 Deep Resistivity (Ohm-m) 2000
0.2 Medium Resistivity (Ohm-m) 2000
0.2 RLL3 (Ohm-m) 2000
15000 Iten (lb) 0



2600

2650

2700

2750

2800

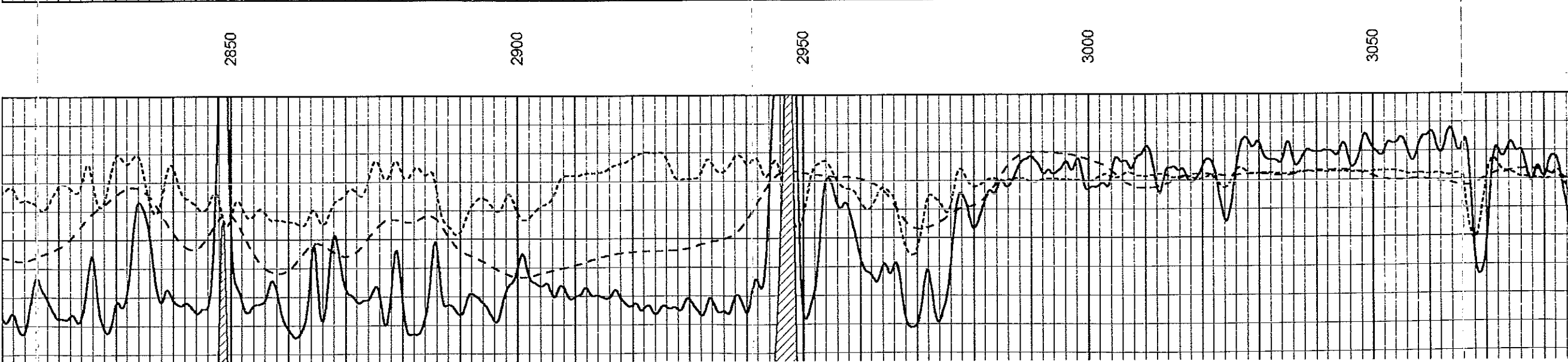
-32

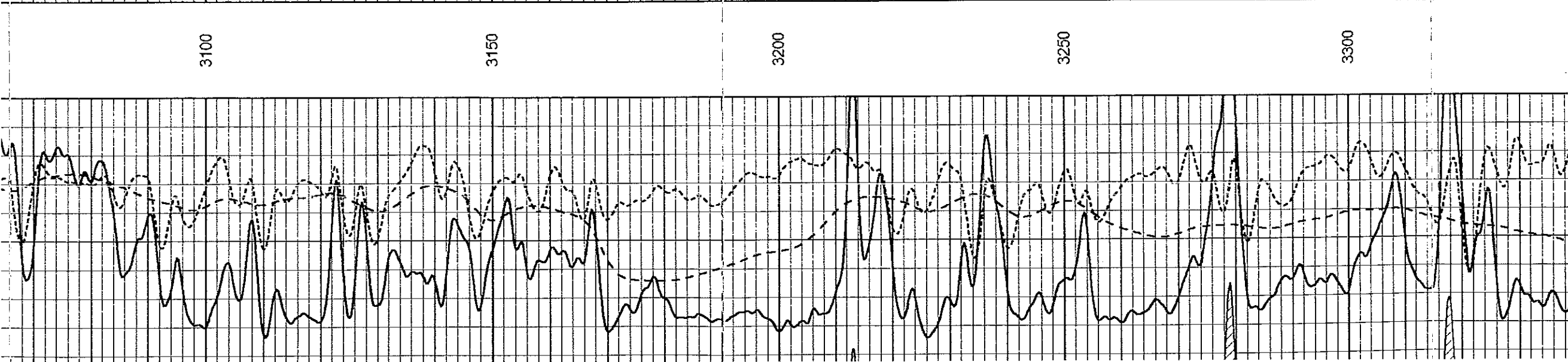
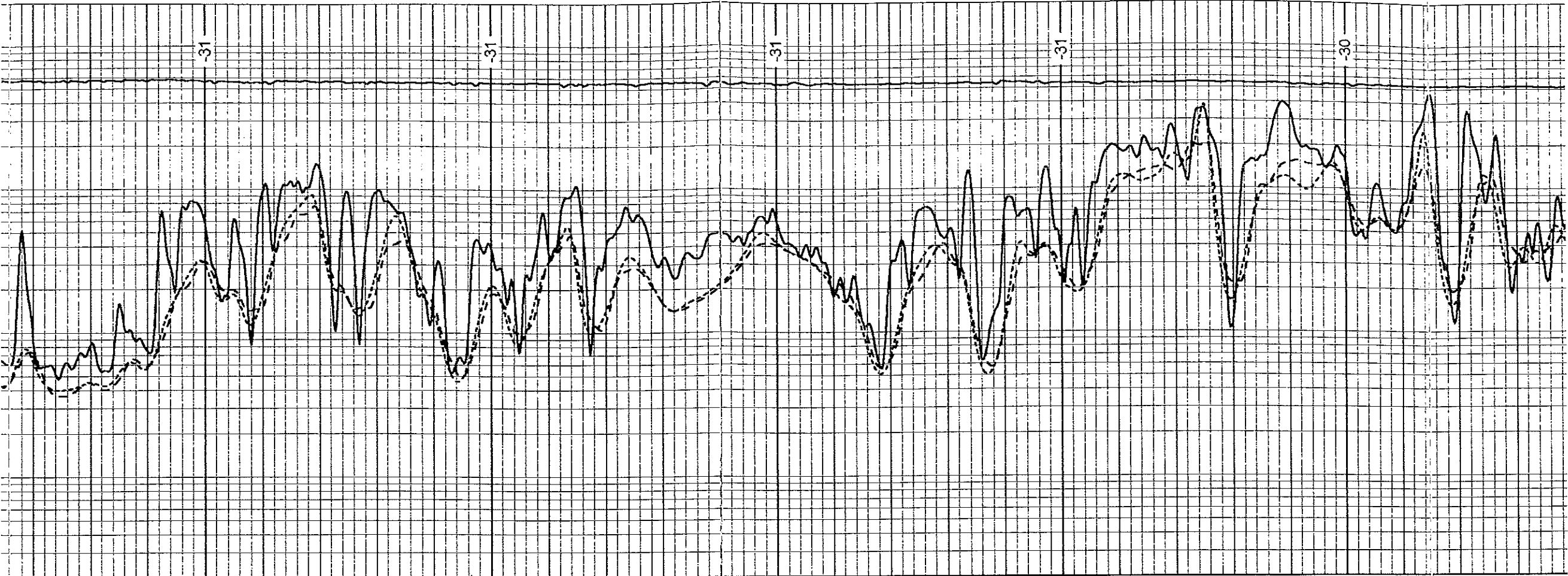
-31

-32

-31

-32





31

31

31

31

30

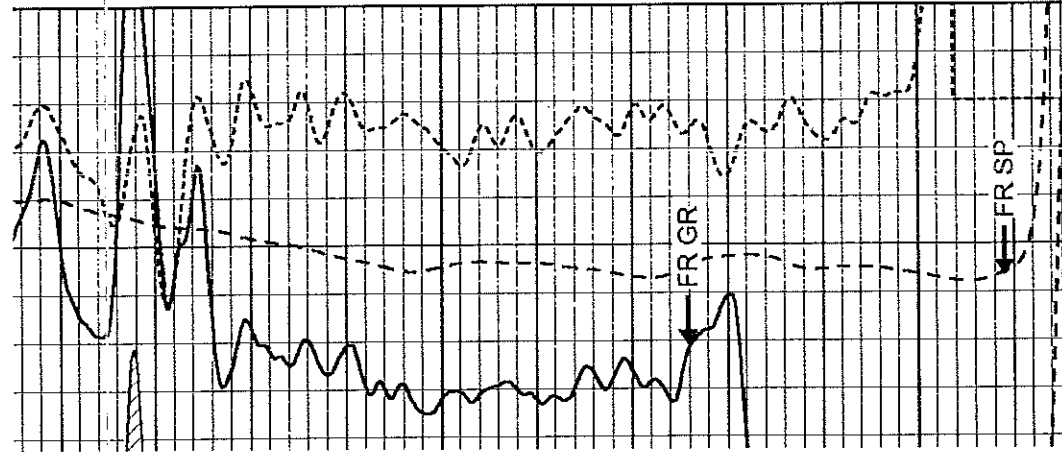
3100

3150

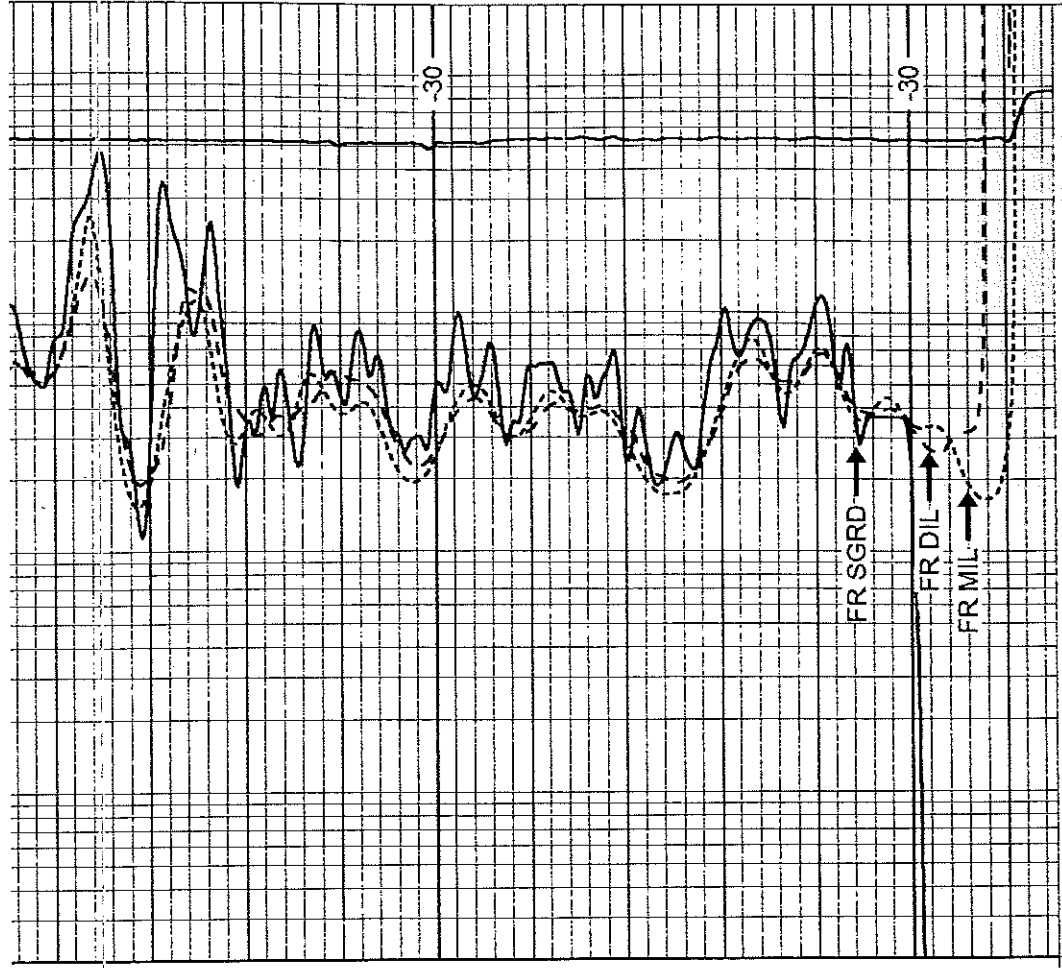
3200

3250

3300



Gamma Ray (GAPI)	150
SP (mV)	0
Rxo / Rt	40



Deep Resistivity (Ohm-m)	2000
Medium Resistivity (Ohm-m)	2000
RLL3 (Ohm-m)	2000
Item (lb)	0



Repeat Section

Database File: vess_hagen-1.db
 Dataset Pathname: stack/pass2.1
 Presentation Format: dli
 Dataset Creation: Tue Oct 11 12:48:47 2011 by Calc SOC 110722
 Charted by: Depth in Feet scaled 1:240

Gamma Ray (GAPI)	150
SP (mV)	0
Rxo / Rt	40

Deep Resistivity (Ohm-m)	2000
Medium Resistivity (Ohm-m)	2000
RLL3 (Ohm-m)	2000
Item (lb)	0

