



**TRILOBITE  
TESTING, INC.**

# DRILL STEM TEST REPORT

RMR Operating LLC  
2515 McKinney AVE. Suite 900  
Dallas Tx, 75201  
ATTN: Dick Jackson

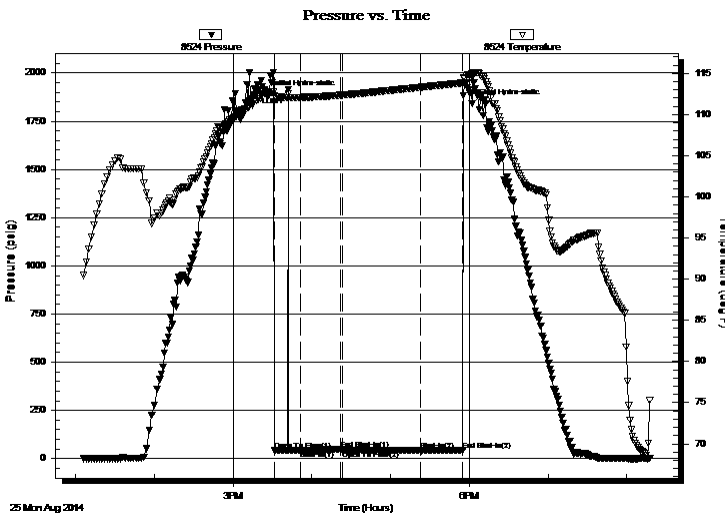
**10/18s/18w/Rush**  
**Stalcup #1**  
Job Ticket: 60343 **DST#: 1**  
Test Start: 2014.08.25 @ 13:05:00

## GENERAL INFORMATION:

Formation: **Arbuckle**  
Deviated: No Whipstock: ft (KB)  
Time Tool Opened: 15:31:30  
Time Test Ended: 20:17:30  
Interval: **3803.00 ft (KB) To 3844.00 ft (KB) (TVD)**  
Total Depth: 3844.00 ft (KB) (TVD)  
Hole Diameter: 7.88 inches Hole Condition: Poor  
Test Type: Conventional Bottom Hole (Initial)  
Tester: Shane Konzem  
Unit No: S3/60/Great Bend  
Reference Elevations: 2082.00 ft (KB)  
2072.00 ft (CF)  
KB to GR/CF: 10.00 ft

**Serial #: 8524 Inside**  
Press @ Run Depth: 43.00 psig @ 3840.00 ft (KB) Capacity: 8000.00 psig  
Start Date: 2014.08.25 End Date: 2014.08.25 Last Calib.: 2014.08.25  
Start Time: 13:06:00 End Time: 20:17:30 Time On Btm: 2014.08.25 @ 15:25:30  
Time Off Btm: 2014.08.25 @ 18:02:00

**TEST COMMENT:** 1st Open/ 20 Minutes. Weak surface blow that died at 10 minutes. Flushed tool per Dick Jackson had good flush bubbles and regained weak surface blow that died again at 16 minutes.  
1st Shut In/ 30 Minutes. No blow back.  
2nd Open/ 60 Minutes. No blow.



## PRESSURE SUMMARY

Time (Min.)	Pressure (psig)	Temp (deg F)	Annotation
0	1887.71	112.55	Initial Hydro-static
6	41.78	112.28	Open To Flow (1)
17	1914.71	112.55	FLUSH
26	43.40	112.08	Shut-In(1)
56	48.19	112.36	End Shut-In(1)
58	41.76	112.37	Open To Flow (2)
117	43.00	113.32	Shut-In(2)
150	45.23	113.84	End Shut-In(2)
157	1841.35	114.86	Final Hydro-static

## Recovery

Length (ft)	Description	Volume (bbl)
5.00	100% Mud	0.07

## Gas Rates

	Choke (inches)	Pressure (psig)	Gas Rate (Mcf/d)



**TRILOBITE  
TESTING, INC.**

# DRILL STEM TEST REPORT

RMR Operating LLC  
 2515 McKinney AVE. Suite 900  
 Dallas Tx, 75201  
 ATTN: Dick Jackson

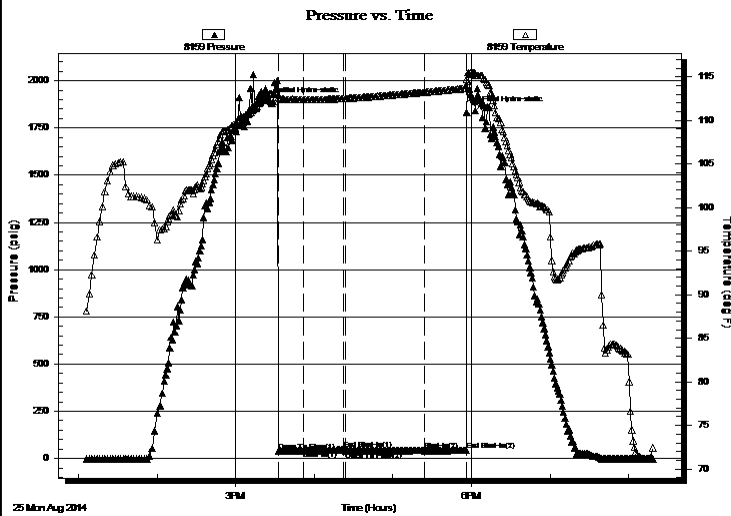
**10/18s/18w/Rush**  
**Stalcup #1**  
 Job Ticket: 60343 **DST#: 1**  
 Test Start: 2014.08.25 @ 13:05:00

## GENERAL INFORMATION:

Formation: **Arbuckle**  
 Deviated: No Whipstock: ft (KB)  
 Time Tool Opened: 15:31:30  
 Time Test Ended: 20:17:30  
 Interval: **3803.00 ft (KB) To 3844.00 ft (KB) (TVD)**  
 Total Depth: 3844.00 ft (KB) (TVD)  
 Hole Diameter: 7.88 inches Hole Condition: Poor  
 Test Type: Conventional Bottom Hole (Initial)  
 Tester: Shane Konzem  
 Unit No: S3/60/Great Bend  
 Reference Elevations: 2082.00 ft (KB)  
 2072.00 ft (CF)  
 KB to GR/CF: 10.00 ft

**Serial #: 8159 Outside**  
 Press @ Run Depth: 43.00 psig @ 3841.00 ft (KB) Capacity: 8000.00 psig  
 Start Date: 2014.08.25 End Date: 2014.08.25 Last Calib.: 2014.08.25  
 Start Time: 13:06:00 End Time: 20:19:00 Time On Btm: 2014.08.25 @ 15:26:30  
 Time Off Btm: 2014.08.25 @ 18:03:00

**TEST COMMENT:** 1st Open/ 20 Minutes. Weak surface blow that died at 10 minutes. Flushed tool per Dick Jackson had good flush bubbles and regained weak surface blow that died again at 16 minutes.  
 1st Shut In/ 30 Minutes. No blow back.  
 2nd Open/ 60 Minutes. No blow.



## PRESSURE SUMMARY

Time (Min.)	Pressure (psig)	Temp (deg F)	Annotation
0	1887.92	113.03	Initial Hydro-static
6	39.64	112.65	Open To Flow (1)
26	42.69	112.38	Shut-In(1)
56	47.14	112.52	End Shut-In(1)
58	40.48	112.53	Open To Flow (2)
118	42.12	113.23	Shut-In(2)
150	43.00	113.68	End Shut-In(2)
157	1840.02	115.41	Final Hydro-static

## Recovery

Length (ft)	Description	Volume (bbl)
5.00	100% Mud	0.07

## Gas Rates

	Choke (inches)	Pressure (psig)	Gas Rate (Mcf/d)

# Pressure vs. Time

