

ROBERT E. O'DELL

Petroleum Geologist

GEOLOGIST'S REPORT

DRILLING TIME AND SAMPLE LOG

COMPANY: **Tomlinson Operating, LLC.**
 LEASE: **Hoffman Trust #1**
 FIELD: **Kraft-Pusa**
 LOCATION: **SE SE SE**
 SEC. **13** TWP **16S** RGE **12W**

COUNTY: **Barton** STATE: **Kansas**
 CONTRACTOR: **Southern Drilling Rig 99**
 SPUD: **12-12-2014** COMP: **12-19-2014**
 RTD: **3412'** LTD: **3412'**
 MUD UP: **2495'** TYPE MUD: **Chemical**

SAMPLES SAVED FROM: **2800'** TO RTD
 DRILLING TIME KEPT FROM: **2800'** TO RTD
 SAMPLES EXAMINED FROM: **2700'** TO RTD

GEOLOGICAL SUPERVISION FROM: **2700'** TO RTD
 GEOLOGIST ON WELL: **Bob O'Dell**

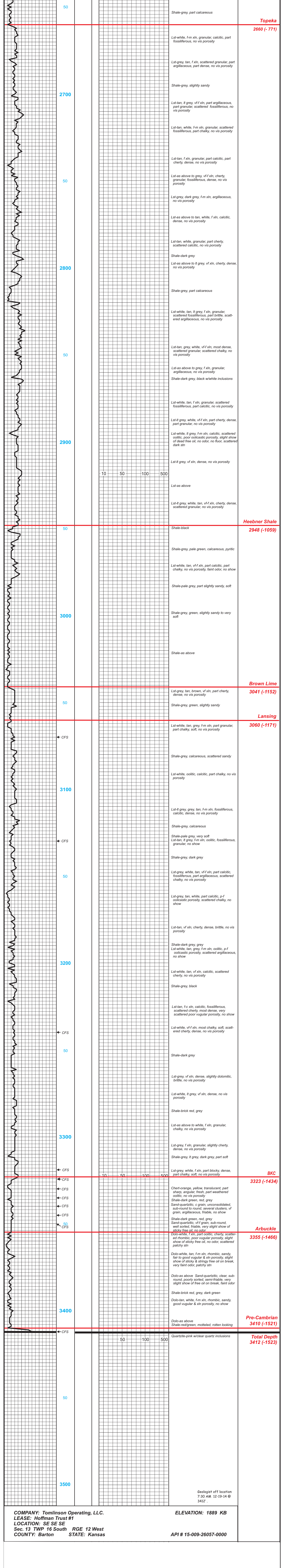
FORMATION TOPS: _____ ELECTRIC LOG: _____ SAMPLE: _____

Formation	Top	Bottom	Sample
Topeka	2860 (-771)	2660 (-771)	
Heebner	2947 (-1058)	2948 (-1059)	
Brown Lime	3039 (-1169)	3041 (-1152)	
Lansing	3058 (-1189)	3060 (-1171)	
BKC	3321 (-1432)	3323 (-1434)	
Arbuckle	3354 (-1465)	3355 (-1466)	
Pre-Cambrian	Not Logged	3410 (-1521)	
Total Depth	3412 (-1523)	3412 (-1523)	

REMARKS: *Due to the lack of commercial shows and poor reservoir development in the Gorham sand and Arbuckle, the decision was made to plug and abandon the #1 Hoffman Trust on 12-19-2014.*

Respectfully Submitted,

Bob O'Dell



COMPANY: **Tomlinson Operating, LLC.**
 LEASE: **Hoffman Trust #1**
 LOCATION: **SE SE SE**
 Sec. **13 TWP 16 South** STATE: **Kansas**
 COUNTY: **Barton** RGE **12 West** API # **15-009-2607-0000**

