

M. Bradford Rine

Consulting Geologist, Licensed and Certified

Scale 1:240 (5"=100') Imperial
Measured Depth Log

Well Name: Sunley Unit "A" #1-28 - Trans Pacific Oil Corporation
API: 15-051-26754-00-00
Location: E2-E2-E2-NW, Section 28-14S-19W
License Number: Ks #9408
Spud Date: November 18, 2014
Surface Coordinates: 1320' FNL & 2730' FEL,
of Section
Bottom Hole Vertical Wellbore
Coordinates:
Ground Elevation (ft): 2176 Ft.
Logged Interval (ft): 3100 Ft. To: 3789Ft.
Formation: Arbuckle at Total Depth
Type of Drilling Fluid: Chemical

Region: Ellis County, Kansas
Drilling Completed: November 24, 2014
Results: Production Casing Set
Field: Kraus
K.B. Elevation (ft): 2181 Ft.
Total Depth (ft): RTD 3789 Ft. LTD 3787 Ft.

Printed by MUD.LOG from WellSight Systems 1-800-447-1534 www.WellSight.com

Operator

Company: Trans Pacific Oil Corporation
Address: 100 South Main, Suite 200
Wichita, Kansas 67202

Geologist

Name: M. Bradford Rine
Company: Consulting Geologist, Kansas Lic. #204, Wyo #189, AAPG Cert. #2647
Address: 100 South Main, Suite #415
Wichita, Kansas 67202

Remarks

Based on sample observations, drill stem test results, and electric log evaluation, it was the decision of the Operator, to set production casing for further testing on the "Sunley Unit A #1-28", on November 24, 2014.

Respectfully submitted,
M. Bradford Rine, geologist

**Trans Pacific Oil Corporation
"Sunley Unit "A" #1-28"
Section 28-14S-19W, Ellis County, Kansas**



Drilling Information

Rig: Mallard Drilling Co. Rig #
Pump: Emsco D-375 6x14
Drawworks: Emsco BDW
Collars: 423 ft 2-1/4 x 6-1/4
Drillpipe: 4-1/2" 16.6#
Toolpusher: Mark Elsen

Mud: Mudco (Gary Schmidberger)
Gas Detector: None
Drill Stem Tests: Diamond (Jeff Brown)
Logs: Pioneer (D. Schmidt)
Water: Trucked in
Company Representatives:
Office: Bryce Bidleman
Field: Monte Boydston, Ken Buehler

Daily Drilling Status

Date: Operations/Depth/Comments
11-18-14 MIRT, RU, Spud @ 0'
11-19-14 Waiting on Cement @ 233'
11-20-14 Drilling @ 1674'
11-21-14 Drilling @ 2688'
11-22-14 Drilling @ 3420'
11-23-14 Trip Out of Hole/DST 1 @ 3530'
11-24-14 Circulate to Condition Hole @ 3789'
11-25-14 Prepare to Run Casing @ 3789'
11-26-14 Cement casing, plug down 4:15 pm, on 11-25.

Casing Record, Bit Record, Deviation Surveys

CASING:

Conductor: None

Surface: Set 8-5/8" 23# @ 233 ft. (Allied) Cement with 150 sx Common, 3% CC 2% gel. Cement did circulate.

Production:

Ran 89 jts, 5-1/2" 15.5# casing, set @ 3779 ft. (Swift) cemented with 150 sx standard, 30 sx in rathole, 20 sx in mousehole. Plug down at 4:15 pm, November 25, 2014.

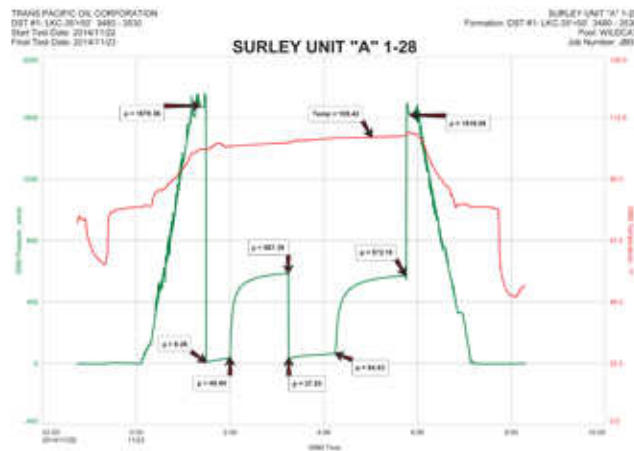
BITS:

No.	Size	Make	Model	Depth In	Depth Out	Hours
1	12-1/4	RR	RT	0	233	2.75
2	7-7/8	Smith	F27	233	3789	69.75

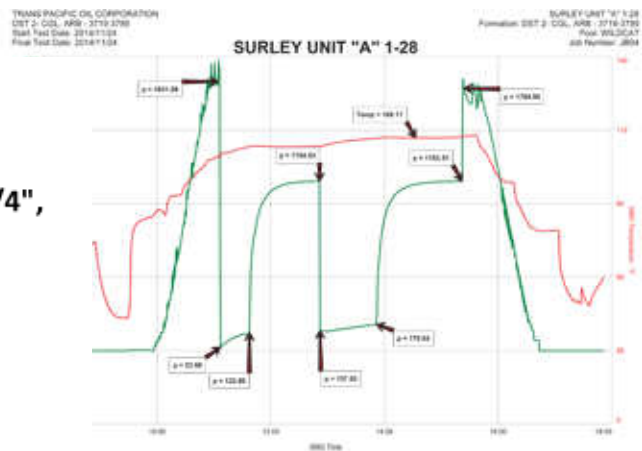
DEVIATION SURVEYS:

Deviation:	Depth:	Deviation:	Depth:
1.50*	233'	1.25*	3789'
1.75*	3530'		

DST #1: 3480-3530 (LKC 35' & 50')
Times: 30-75-60-90
Initial Open: Wk, built to 2" i.b.
Final Open: Wk, built to 1-1/2" i.b.
Rec: 125' mud
IHP: 1673 FHP: 1619
IFP: 8-40 FFP: 38-65
ISIP: 587 FSIP: 572
BHT: 105°F



DST #2: 3719-3789 (Cgl, Arb)
Times: 30-75-60-90
Initial Open: Stg, b.o.b. 29 min., no b.b.
Final Open: Stg, b.o.b. 23 min., b.b. built to 1/4",
then dead at 38 min
Rec: 439' Total Fluid, 94' gas in pipe
220' GCO: 15%g 85%o
93' OCM: 25%o 75%m
126' SOCM: 10%o 90%m
(Oil Gravity: 32*)
IHP: 1831 FHP: 1785
IFP: 24-123 FFP: 138-179
ISIP: 1155 FSIP: 1154
BHT: 109°F



Rock Types

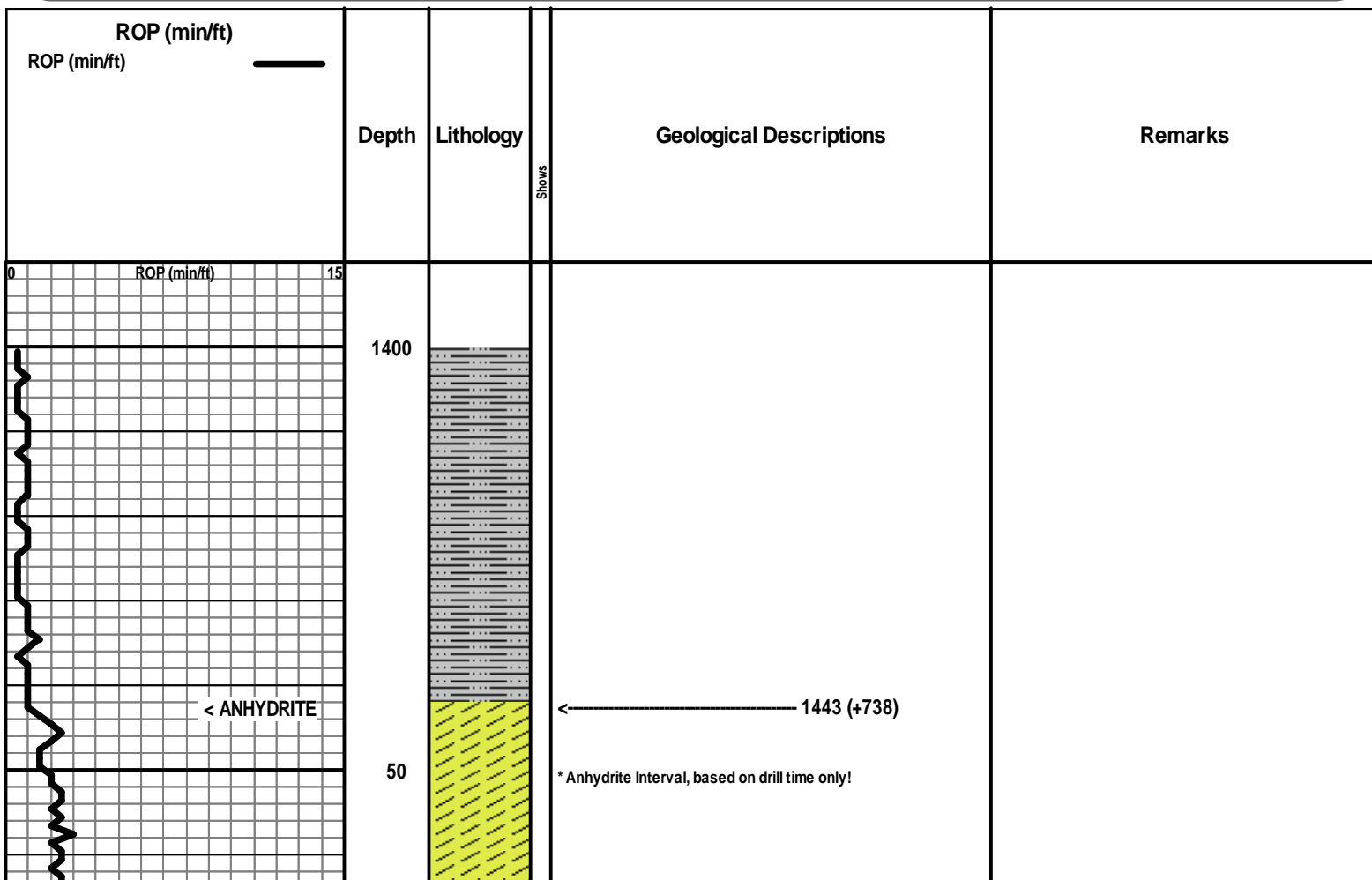
Anhy	Black shale	Coal	Lmst	Shcol	Siltysh
Bent	Congl	Meta	Shgy	Shlysiltst	Sandyls
Brec	Dol	Mrlst	Sltst	Ss	
Cht	Gyp	Salt	Till		
Clyst	Igne	Shale			

Accessories

MINERAL	Gyp	FOSSIL	Ostra	Sltstrg
Anhy	Hvymin	Algae	Pelec	Ssstrg
Arggrn	Kaol	Amph	Pellet	TEXTURE
Arg	Marl	Belm	Pisolite	Boundst
Bent	Minxl	Bioclst	Plant	Chalky
Bit	Nodule	Brach	Strom	Cryxln
Brecfrag	Phos	Bryozoa	STRINGER	Earthy
Calc	Pyr	Cephal	Anhy	Finexln
Carb	Salt	Coral	Arg	Grainst
Chtdk	Sandy	Crin	Bent	Lithogr
Chtlt	Silt	Echin	Coal	Microxln
Dol	Sil	Fish	Dol	Mudst
Feldspar	Sulphur	Foram	Gyp	Packst
Ferrpel	Tuff	Fossil	Ls	Wackest
Ferr		Gastro	Mrst	
Glau		Oolite		

Other Symbols

OIL SHOW	Spotted	Gas	INTERVAL
Gas show	Trace to questionable		Core
Even	Dead		Dst



< B/ANHYDRITE

1486 (+695)

ROP (min/ft)

1500

*** Depth Break ***

3100

Sh gy-grn

conn

Ls wh-cr, fn xln, foss (some weath'd to gy)

Ls cr-tan, fn xln, dns, foss

Sh gy, muchy-soft

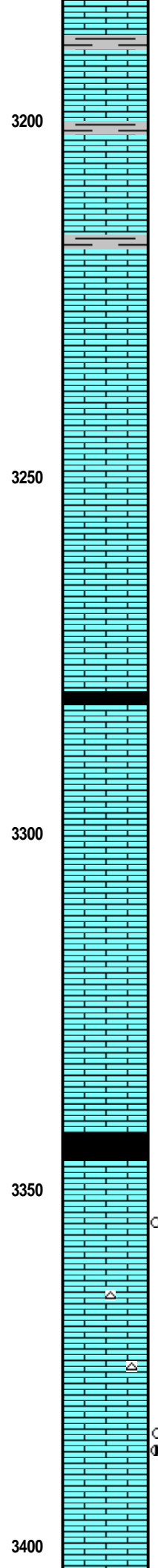
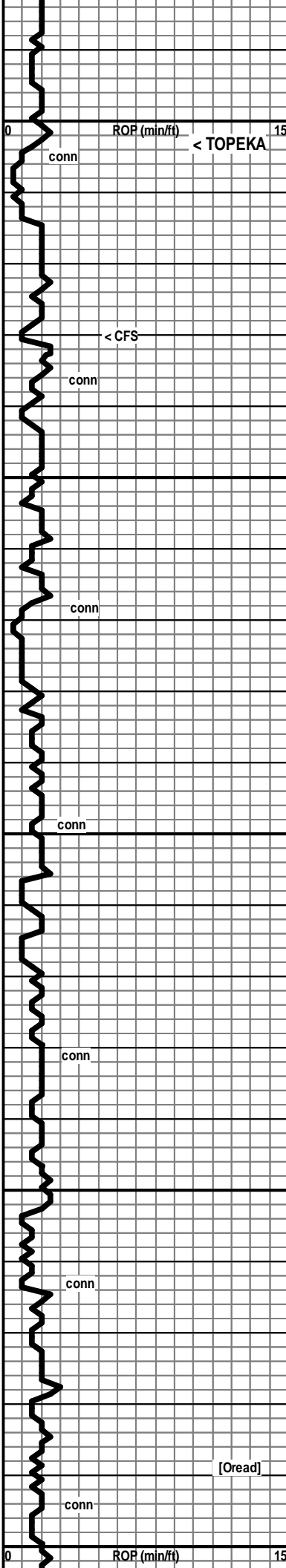
conn

3150

Ls wh-cr, fn xln, subgrainy text in pt foss, scatt sm calcite patches

conn

* Displace & Mudup @ 2855'!



Ls wh-cr-gy-tan, fn xln, dns in pt, pr xln por in pt, foss

Ls wh-cr-gy, fn xln, dns in pt, pr xln por in pt, foss

← 3203 (-1022)

Ls cr-tan-gy, slity/grainy text in pt, pr-fr xln por, foss

[No Show]

Sh gy

Ls cr-gy, fn xln, dns, foss in pt

Ls cr-gy, fn xln, subchalky in pt, dns in pt, pr xln por in pt, sli foss in pt

Ls cr-gy, fn xln, subchalky in pt, dns in pt, pr xln por in pt, sli foss in pt

Ls wh-cr-gy, chalky in pt, pr xln por in pt, foss (some weath'd to gy)

Ls wh-cr-gy, chalky in pt, pr xln por in pt, foss (some weath'd to gy)

Ls wh-cr-tan, fn xln, chalky in pt, pr xln por in pt, dns in pt, foss-abund foss, some weath'd to gy

Ls cr, vfn-fn xln, dns, foss in pt

Sh dk gy-black

Ls wh-cr, fn xln, grainy-mealy text in pt, fr-gd xln por in pt, foss

[V Fnt fleeting Odor, Rr trace of spots of brn stn, NSFO]

Ls wh-cr-tan-gy, fn xln, chalky in pt, dns in pt, pr xln por in pt, foss-abund foss, Chert: fresh, brn, foss, opaque

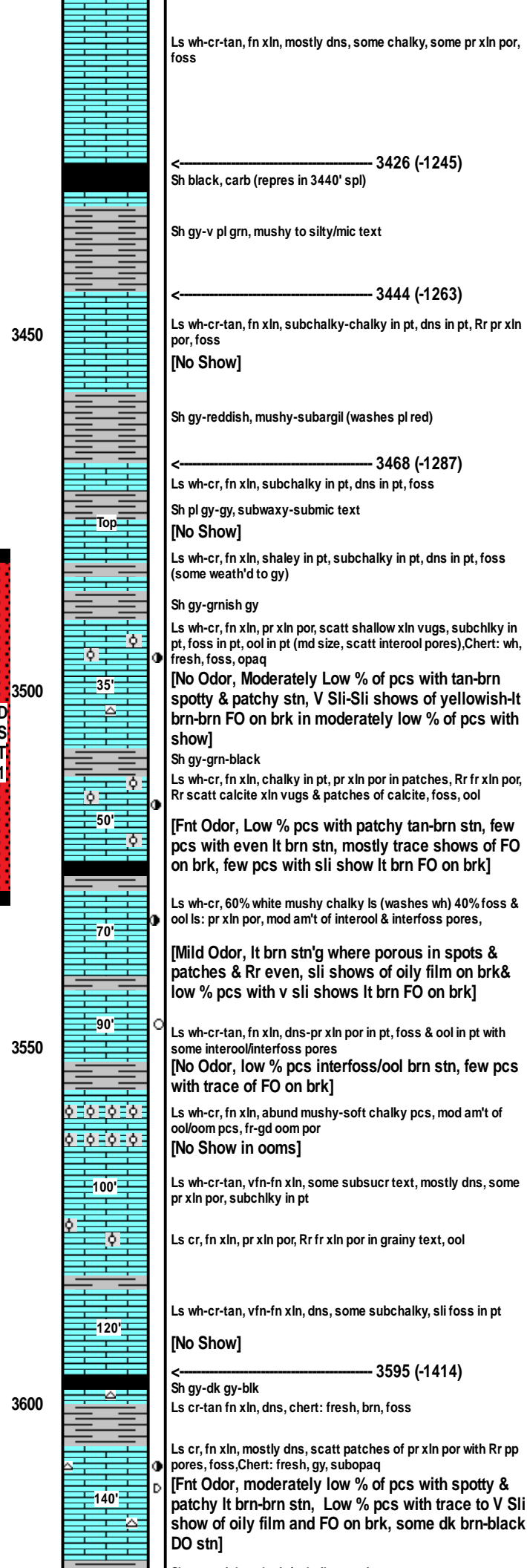
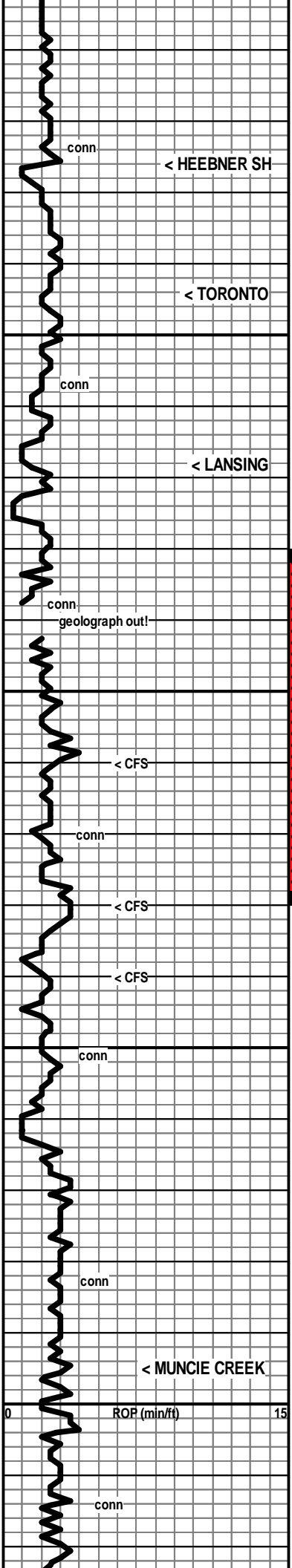
Ls cr-tan, fn xln, grainy/mealy text in pt, scatt pr-fr xln por, dns in pt, foss

[V Fnt Odor, Rr patches if spotty brn stn, trace of oily film on brk, Vr Rr tr of lt brn FO on brk, mostly barren]

Mud Check, Drlg @ 3394':

Vis	Wt	WL	LCM	PV	YP
51	8.9	6.8	3	12	29
Chl	Hd	pH	Solids		
1800	Tr	11.0	3.6		

7:00 AM, November 22, 2014



Ls wh-cr-tan, fn xln, mostly dns, some chalky, some pr xln por, foss

← 3426 (-1245)
Sh black, carb (repres in 3440' spl)

Sh gy-v pl grn, mushy to silty/mic text

← 3444 (-1263)

Ls wh-cr-tan, fn xln, subchalky-chalky in pt, dns in pt, Rr pr xln por, foss
[No Show]

Sh gy-reddish, mushy-subargil (washes pl red)

← 3468 (-1287)

Ls wh-cr, fn xln, subchalky in pt, dns in pt, foss
Sh pl gy-gy, subwaxy-submic text
[No Show]

Ls wh-cr, fn xln, shaley in pt, subchalky in pt, dns in pt, foss (some weath'd to gy)

Sh gy-grnish gy

Ls wh-cr, fn xln, pr xln por, scatt shallow xln vugs, subchlk in pt, foss in pt, ool in pt (md size, scatt interool pores), Chert: wh, fresh, foss, opa
[No Odor, Moderately Low % of pcs with tan-brn spotty & patchy stn, V Sli-Sli shows of yellowish-lt brn-brn FO on brk in moderately low % of pcs with show]

Sh gy-grn-black

Ls wh-cr, fn xln, chalky in pt, pr xln por in patches, Rr fr xln por, Rr scatt calcite xln vugs & patches of calcite, foss, ool

[Fnt Odor, Low % pcs with patchy tan-brn stn, few pcs with even lt brn stn, mostly trace shows of FO on brk, few pcs with sli show lt brn FO on brk]

Ls wh-cr, 60% white mushy chalky ls (washes wh) 40% foss & ool ls: pr xln por, mod am't of interool & interfoss pores,

[Mild Odor, lt brn stn'g where porous in spots & patches & Rr even, sli shows of oily film on brk & low % pcs with v sli shows lt brn FO on brk]

Ls wh-cr-tan, fn xln, dns-pr xln por in pt, foss & ool in pt with some interool/interfoss pores
[No Odor, low % pcs interfoss/ool brn stn, few pcs with trace of FO on brk]

Ls wh-cr, fn xln, abund mushy-soft chalky pcs, mod am't of ool/oom pcs, fr-gd oom por
[No Show in ooms]

Ls wh-cr-tan, vfn-fn xln, some subsucr text, mostly dns, some pr xln por, subchlk in pt

Ls cr, fn xln, pr xln por, Rr fr xln por in grainy text, ool

Ls wh-cr-tan, vfn-fn xln, dns, some subchalky, sli foss in pt

[No Show]

← 3595 (-1414)

Sh gy-dk gy-blk

Ls cr-tan fn xln, dns, chert: fresh, brn, foss

Ls cr, fn xln, mostly dns, scatt patches of pr xln por with Rr pp pores, foss, Chert: fresh, gy, subopaq

[Fnt Odor, moderately low % of pcs with spotty & patchy lt brn-brn stn, Low % pcs with trace to V Sli show of oily film and FO on brk, some dk brn-black DO stn]

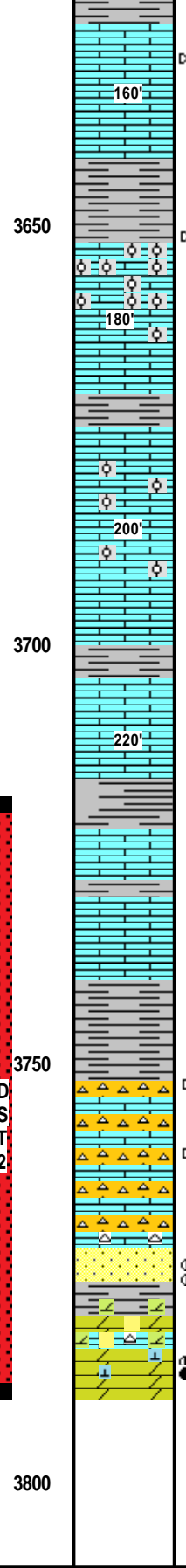
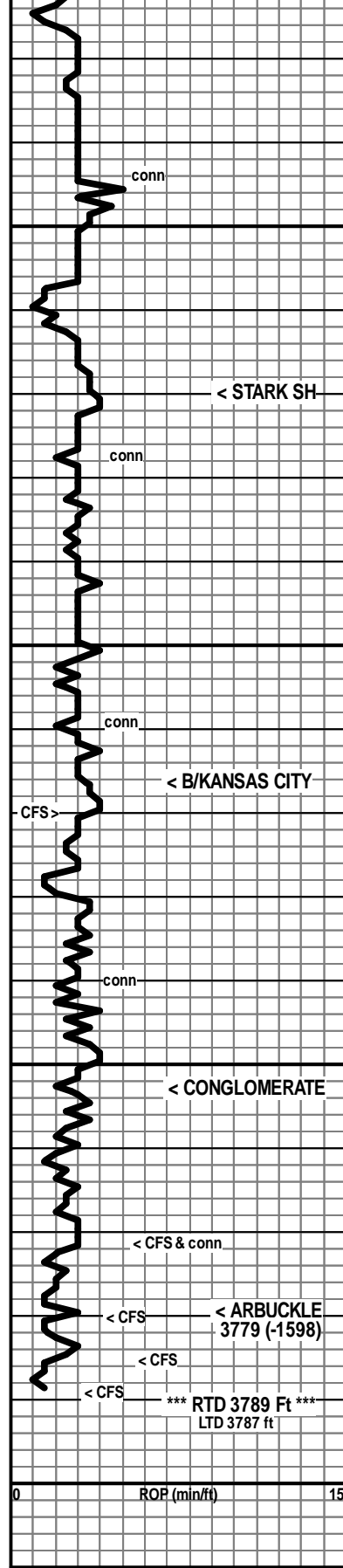
← * 3492', Geograph out, DFR! (Circulating)

DST #1: 3480-3530 (LKC 35' & 50')
 Times: 30-75-60-90
 Initial Open: Wk, built to 2" i.b.
 Final Open: Wk, built to 1-1/2" i.b.
 Rec: 125' mud
 IHP: 1673 FHP: 1619
 IFP: 8-40 FFP: 38-65
 ISIP: 587 FSIP: 572
 BHT: 105°F

7:00 AM, November 23, 2014

Pipe Strap @ 3530':
2.41 ft long!

Mud Check, Trip at 3530':
 Vis Wt WL LCM PV YP
 57 9.0 6.8 2 10 28
 Chl Hd pH Solids
 2800 Tr 11.0 4.9



Sh gy-grnsh, submic/subsilty text in pt

Ls wh-cr, fn xln, abund chalky pcs, mostly dns with scatt patches & pcs with pr xln por, foss in pt
[No Odor, abund pcs with spotty-patchy dk brn DO stn & black resid/gils stn, NSFO]
 Ls tan, vfn-fn xln, dns

Sh gy-dk gy-dk red

Ls wh-cr, fn xln, chalky in pt, abund dns, Rr pr xln por, foss, some chalky oolites
[No Odor, mod % pcs with spotty & patchy black resid/gilson stn, NSFO]
 Ls cr fn xln, pr xln por, ool & oom with fr-gd oom por
[Oom Ls barren/NSO]

Ls wh-cr, fn xln, dns & firm in pt, soft & chalky in pt, sli foss, some finely ool pcs

← 3670 (-1489)

Sh gy-dk gy

Ls wh-cr, fn xln, subchalky in pt, much dns, some pr xln por, foss, abund ool pcs (well cem)
[No Show]

Ls wh-cr, fn xln, mostly dns, some chalky, ool in pt

Sh gy-grnsh gy

Ls wh-cr fn xln, chalky in pt, mostly dns, scatt transl calcite patches, foss in pt
[No Show]
 Ls wh-cr-tan fn xln, chalky in pt, mostly dns, scatt transl calcite patches, foss in pt

← 3716 (-1535)

Sh gy-dk gy-dk red

Ls wh-cr-tan, fn xln, chalky in pt, dns in pt, scatt transl calcite patches, foss in pt
[No Show]
 Ls wh-cr-tan, fn xln, chalky in pt, dns in pt, scatt transl calcite patches, foss in pt

Sh gy-grn-brn-red, subsilty in pt, subearthy text in pt

← 3753 (-1572)

Spls mix of Ls wh-cr, fn xln, dns with patches of v pr xln por; & Chert: fresh-subgrainy, cr-tan-orange, transl-subtransl-subopaq
[No Odor, No fluor, scatt patches of black resid/gils stn in Ls, NSFO]

Sh red-brn-gy-grn, (washes reddish)

Sd clear, fn grn, subrd-rd, gd sort, some pr sort with fn-md grns, pr-gd fri, some wh chalky cem, some fr grnlr por

Dol Ls/Limey Dol wh-cr, fn xln, subrhombic text, pr-fr xln por, Rr shallow vugs, pr-fr-gd crush
 Sh vc, some grn subwaxy marbled with gy, Sdy Limey dol cherty (ool in pt) (low % shale in spls)
 Dol Ls/Limey Dol wh-cr, fn xln, subrhombic text, pr-fr xln por in patches & pcs, Rr scatt vugs, pr-fr-gd crush

DST #2: 3719-3789 (Cgl, Arb)
 Times: 30-75-60-90
 Initial Open: Stg, b.o.b. 29 min., no b.b.
 Final Open: Stg, b.o.b. 23 min., b.b. built to 1/4" then dead at 38 min
 Rec: 439' Total Fluid, 94' gas in pipe
 220' GCO: 15%g 85%o
 93' OCM: 25%o 75%g
 126' SOCM: 10%o 90%g
 (Oil Gravity: 32*)
 IHP: 1831 FHP: 1785
 IFP: 24-123 FFP: 138-179
 ISIP: 1155 FSIP: 1154
 BHT: 109°F

Mud Check, CFS @ 3789':
 Vis Wt WL LCM PV YP
 54 9.2 7.4 2 15 25
 Chl Hd pH Solids
 3000 Tr 10.5 6.3

←-[SD: No Odor, Scatt dull fluor, Sli show of dk brn FO & NVL oil on brk, some blk resid dead stn]
 ←-[Dol Ls/Dol: Fnt Odor, Dull spotty fluor, sli-fr shows of lt/dk brn FO & NVL oil and blk gilson specks, spotty-even to Rr even tan-lt brn stn]

0 ROP (min/ft) 15

3650
3700
3750
3800

< STARK SH
 < B/KANSAS CITY
 < CONGLOMERATE
 < ARBUCKLE 3779 (-1598)
 *** RTD 3789 Ft ***
 LTD 3787 ft