



**DIAMOND TESTING**  
 P.O. Box 157  
**HOISINGTON, KANSAS 67544**  
 (800) 542-7313  
**DRILL-STEM TEST TICKET**  
 FILE: Stoll 1-32 dst 5

TIME ON: 18:13 Nov 8  
 TIME OFF: 02:53 Nov 9

Company Grand Mesa Operating Company Lease & Well No. Stoll 1-32  
 Contractor Duke Drilling Rig 4 Charge to Grand Mesa Operating Company  
 Elevation 3073 Sur Formation Pawnee/Cherokee Effective Pay \_\_\_\_\_ Ft. Ticket No. RR117  
 Date 11/08/2014 Sec. 32 Twp. \_\_\_\_\_ 6 S Range \_\_\_\_\_ 33 W County \_\_\_\_\_ Scott State KANSAS  
 Test Approved By Bob Schreiber Diamond Representative RICKY RAY

Formation Test No. 5 Interval Tested from 4484 ft. to 4592 ft. Total Depth 4592 ft.  
 Packer Depth 4479 ft. Size 6 3/4 in. Packer depth \_\_\_\_\_ ft. Size 6 3/4 in.  
 Packer Depth 4484 ft. Size 6 3/4 in. Packer depth \_\_\_\_\_ ft. Size 6 3/4 in.

Depth of Selective Zone Set \_\_\_\_\_

Top Recorder Depth (Inside) 4466 ft. Recorder Number 0062 Cap. 5000 P.S.I.  
 Bottom Recorder Depth (Outside) 4476 ft. Recorder Number 5954 Cap. 5000 P.S.I.  
 Below Straddle Recorder Depth \_\_\_\_\_ ft. Recorder Number \_\_\_\_\_ Cap. \_\_\_\_\_ P.S.I.

Mud Type CHEM Viscosity 64 Drill Collar Length \_\_\_\_\_ ft. I.D. 2 1/4 in.  
 Weight 9.2 Water Loss 9.6 cc. Weight Pipe Length \_\_\_\_\_ ft. I.D. 2 7/8 in.  
 Chlorides 9400 P.P.M. Drill Pipe Length 4452 ft. I.D. 3 1/2 in.  
 Jars: Make STERLING Serial Number 8 Test Tool Length 32 ft. Tool Size 3 1/2-IF in.  
 Did Well Flow? NA Reversed Out NA Anchor Length 108a(12P) ft. Size 4 1/2-FH in.  
 Main Hole Size 7 7/8 Tool Joint Size 4 1/2 xh in. Surface Choke Size 1 in. Bottom Choke Size 5/8 in.

Blow: 1st Open: 1/4" Blow (Built to 9 inches in 30 mins) NOBB  
2nd Open: 1" Blow ( BOB in 18 3/4 mins) NOBB

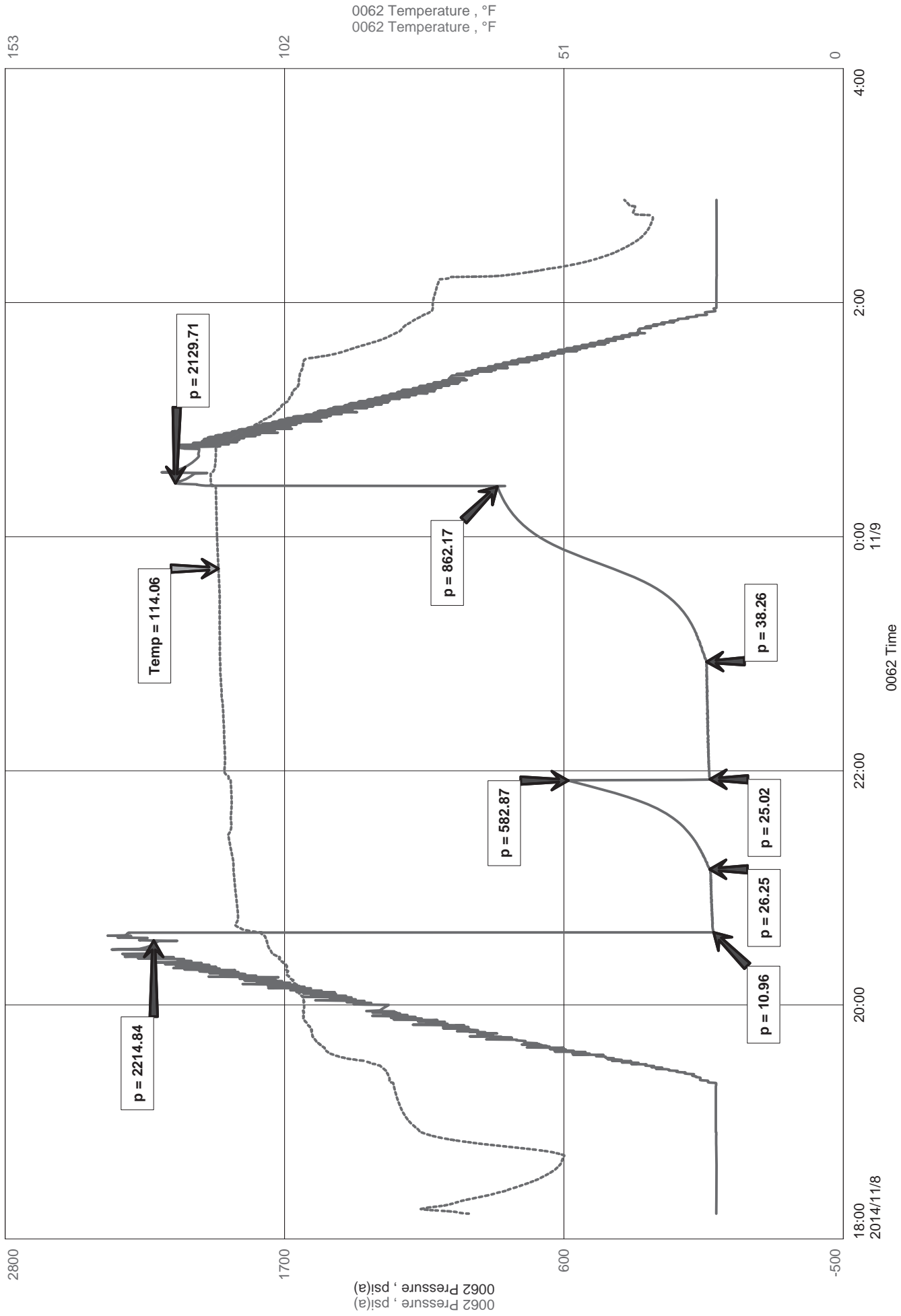
Recovered <u>372</u> ft. of <u>GIP</u>	
Recovered <u>62</u> ft. of <u>SLOM</u> <u>1% O</u> <u>99% M</u>	
Recovered _____ ft. of _____	
Recovered _____ ft. of _____	
Recovered _____ ft. of _____	Price Job
Recovered _____ ft. of _____	Other Charges
Remarks: <u>Tool Sample: 1% O 99% M</u>	Insurance
	Total

Time Set Packer(s) 8:37 PM Nov 8 <sup>A.M.</sup>/<sub>P.M.</sub> Time Started Off Bottom 12:22 AM Nov 9 <sup>A.M.</sup>/<sub>P.M.</sub> Maximum Temperature 114

Initial Hydrostatic Pressure..... (A) 2215 P.S.I.  
 Initial Flow Period..... Minutes 30 (B) 11 P.S.I. to (C) 26 P.S.I.  
 Initial Closed In Period..... Minutes 45 (D) 583 P.S.I.  
 Final Flow Period..... Minutes 60 (E) 25 P.S.I. to (F) 38 P.S.I.  
 Final Closed In Period..... Minutes 90 (G) 862 P.S.I.  
 Final Hydrostatic Pressure..... (H) 2130 P.S.I.

Diamond Testing shall not be liable for damages of any kind to the property or personnel of the one for whom a test is made or for any loss suffered or sustained, directly or indirectly, through the use of its equipment, or its statement or opinion concerning the result of any test. Tools lost or damaged in the hole shall be paid for at cost by the party for whom the test is made.

# Stoll 1-32





Diamond Testing LLC  
 P.O. Box 157  
 HoisingtonKS 67544

**Ricky Ray - Tester**  
**(620) 617-7261**

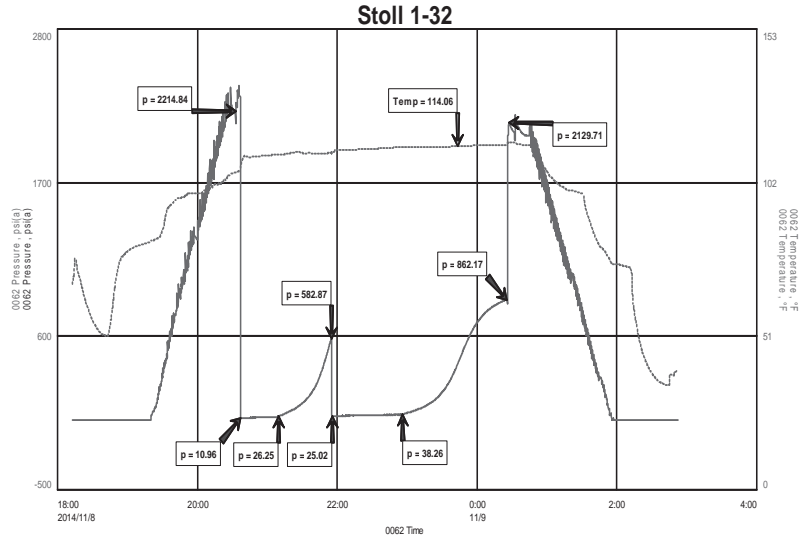
# Wellsite Report

## General Information

Company Name	Grand Mesa Operating Company
Contact	Michael J Reily
Well Operator	Grand Mesa Operating Company
Well Name	Stoll 1-32
Surface Location	Sec: 32-6s-33w (Scott County)
Field	Wildcat
Well Type	Vertical
Pool	Wildcat
Test Purpose (AEUB)	Initial Test
Qualified By	Bob Schreiber
Gauge Name	0062

## Test Information

Job Number	RR117
Test Type	Drill Stem Test
Well Fluid Type	01 Oil
Formation	Dst 5 Pawnee/Cherkee (4484-4592)
Start Test Date	2014/11/08 YYYY/MM/DD
Start Test Time	18:13:00 HH:mm:ss
Final Test Date	2014/11/09 YYYY/MM/DD
Final Test Time	02:53:00 HH:mm:ss



## Test Results

### Recovery:

372'	GIP		
62'	SLOM	1% O	99% M

Tool Sample: 1% O 99% M