

Scale 1:240 (5"=100') Imperial
Measured Depth Log

Well Name: #1-32 Stoll
Location: 1740' FSL, 220' FEL, 32-16S-23W, Scott County, Kansas
License Number: API: 15-171-21097
Spud Date: 9-30-2011
Surface Coordinates: Lat: 38.61746
Bottom Hole Coordinates: Long: -100.9815995
Vertical hole

Ground Elevation (ft): 3073' K.B. Elevation (ft): 3082'
Logged Interval (ft): 3600' To: RTD Total Depth (ft): 4685'
Formation: Mississippian at RTD
Type of Drilling Fluid: Chemical

Printed by MUD.LOG from WellSight Systems 1-800-447-1534 www.WellSight.com

GEOLOGIST

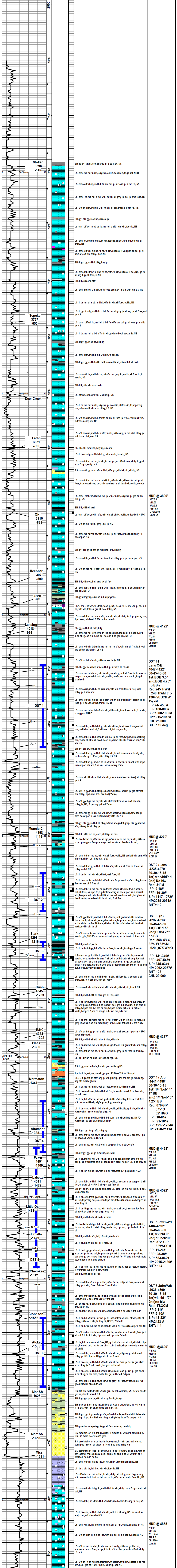
Name: Bob Schreiber
Company: Independent
Address: 268 NE 220 Rd
Holsington, KS 67544
620-653-7691

COMMENTS

Contractor: Duke Drilling Co Rig #4
Pusher: Rich Wheeler
Surface Casing: 8 5/8" set at 221' w/165sx
Production Casing: 5 1/2" set at 4648',
Mud by: MudCo
DST's by: Diamond Testing
Logs by: Recon log (DIL, CN-CD, ML, SONIC)
RTD=4865'
LTD=4858'

FORMATION TOPS

FORMATION	SAMPLE TOPS		LOG TOPS	
	Depth	Datum	Depth	Datum
Stone Corral	2412'	+670	2409'	+634
B/Stone Corral	2432'	+650	2428'	+615
Topeka	3737'	-655	3730	-648
Heebner Shale	3972'	-890	3966'	-884
Lansing	4018'	-936	4010'	-928
Muncie Creek Shale	4198'	-1116	4193'	-1111
Stark Shale	4298'	-1216	4291'	-1209
B/KC	4384'	-1302	4378'	-1296
Marmaton	4432'	-1350	4425'	-1343
Upper Fort Scott	4525'	-1443'	4514'	-1432
Little Osage Shale	4543'	-1461	4536'	-1454
Excello Shale	4561'	-1479	4553'	-1470
Johnson Zone	4638'	-1556	4631'	-1549
Morrow	4707'	-1625	4700'	-1618
Morrow ss	4740'	-1658	4734'	-1652
Mississippian	4763'	-1681	4757'	-1675
RTD	4865'	-1783		
LTD			4858'	-1776



Morning Report Depth/Activity

Spud at 1:15pm on 10-31-14, set 221' of 8 5/8" w/165 sxs
 11-1-14; drlg @ 793'
 11-2-14; drlg @ 2909'
 11-3-14; drlg @ 3048'
 11-4-14; Dri @ 3895', Diploaced @ 3490'
 11-5-14; DS T#1 @ 4122', Lans C E
 11-6-14; DS T#2 @ 4270', Lans I, DS T#3 @ 4313', Lans K 11-7-14;
 Dri @ 4385'
 11/8/14; DS T#4 @ 4488' Marmaton, DS T#5 @ 4522' Paw/Cher
 11/9/14; DS T#6 @ 4667' Johns-Atoka
 11/10/14; Dri @ 4718'
 11/11/14; Dri @ 4865', Log and Run pipe, set @ 4648 cmnt w/200
 sxeA2, Port Collar @ 2442'
 11/12/14; Tear down

Survey record
 1'4deg @ 221'
 0' deg @ 1009'
 0'2 deg @ 1507'
 3'4 deg @ 2107'
 1'2 deg @ 2609'
 3'4 deg @ 3048'
 3'4 deg @ 4122'
 3'4 deg @ 4690'

MUD @ 3899'
 WT:8.8
 VLS:50
 WLS:6.4
 PH:10.5
 CHL:39.00
 LCM: 2#

MUD @ 4122'
 WT:8.2
 VLS:60
 WLS:6.7
 PH:9.0
 CHL:43.00
 LCM: #

MUD @ 4270'
 WT: 9.1
 VLS: 67
 WLS: 6.8
 PH:10.5
 CHL:80.00
 LCM:2#

DST 2 (Lans I)
 30-30-15-15
 1st) wsb/bl/dd
 2nd) No blw
 Rec: 21' GIP
 375' O
 62' HGO

DST 3 (K)
 4297-4313'
 30-45-45-60
 1st)BOB 3.5"
 2nd)BOB 1.5"
 no BB
 Rec: 558' 5% O
 32% W63' W, T/O

DST 4 (Alt)
 4441-4488'
 30-30-15-15
 1st)wkb bld 1/2"
 1st)BB
 2nd)1/4"bob15"
 4.25" BB
 Rec: 679'GIP
 375' O
 62' HGO

DST 5 (Pawn-Vd)
 4484-4529'
 30-45-60-90
 1st)wkb bld 9"
 2nd) 1" bob19"
 Rec: 1' GIP
 62' VSOCM
 375' O
 62' HGO

DST 6 (John/Atk)
 4636-4699'
 30-30-15-15
 1st)wkb bld 1/2"
 2nd)no blw
 Rec: 1'SOCM
 IFF: 9-11#
 FFP: 9-10#
 SIP: 845-834#
 HP: 2062-2067#
 BHT: 123
 CHL 29,000

MUD @ 4387'
 WT: 8.2
 VLS: 46
 WLS: 6.6
 PH: 10.0
 CHL: 90.00

MUD @ 4498'
 WT: 8.2
 VLS: 64
 WLS: 6.6
 PH: 9.5
 CHL: 90.00
 LCM: #

MUD @ 4592'
 WT: 8.2
 VLS: 67
 WLS: 6.8
 PH: 10.4
 CHL: 97.00
 LCM: 2#

MUD @ 4699'
 WT: 8.0
 VLS: 60
 WLS: 6.6
 PH: 8.5
 CHL: 50.00
 LCM: 2#