

JAMES C. MUSGROVE

Petroleum Geologist, LLC
212 Main Street
P.O. Box 215
Clafin, KS 67525

Office (620) 588-4250

Res. Clafin (620) 587-3444

Mai Oil Operations
Reiser #10
NW-SW-SE-NW (2000' FNL & 1375' FWL)
Section 21-21s-12w
Stafford County, Kansas

Page 1

5 1/2" Production Casing Set

Contractor: Southwind Drilling Co. (rig #3)
Commenced: October 30, 2014
Completed: November 6, 2014
Elevation: 1857' K.B., 1855' D.F., 1849' G.L.
Casing program: Surface; 8 5/8" @ 641'
Production, 5 1/2" @ 3699'
Sample: Samples saved and examined 2900' the Rotary Total Depth.
Drilling time: One (1) foot drilling time recorded and kept 2900' to the Rotary Total Depth.
Measurements: All depths measured from the Kelly Bushing.
Drill Stem Tests: There were seven (7) Drill Stem Tests ran by Trilobite Testing Co.
Electric Log: By Nabors, Dual Induction, Compensated Density/Neutron and Micro Log.

<u>Formation</u>	<u>Log Depth</u>	<u>Sub-Sea Datum</u>
Anhydrite	655	+1202
Base Anhydrite	676	+1181
Heebner	3122	-1265
Toronto	3141	-1265
Douglas	3154	-1297
Brown Lime	3244	-1387
Lansing	3259	-1402
Base Kansas City	3480	-1623
Viola	3495	-1638
Simpson Shale	3515	-1658
Arbuckle	3561	-1704
Rotary Total Depth	3700	-1843
Log Total Depth	3700	-1843

All tops and zones corrected to Electric Log Measurement.

SAMPLE ANALYSIS, SHOWS OF OIL, TESTING DATA, ETC.

TOPEKA SECTION

2900-3112' No shows of oil and/or gas was noted in the drilling of the Topeka Section.

TORONTO SECTION

3141-3153' Limestone, tan, gray, finely crystalline, fossiliferous in part, dolomitic at base, plus white chalk, no shows.

LANSING SECTION

3259-3270' Limestone, tan, finely crystalline, fossiliferous, chalky, few cherty, poor visible porosity, no shows.

3275-3288' Limestone, tan, sub-oomoldic, chalky, trace brown stain, weak show of free oil and faint odor in fresh samples.

3300-3306' Limestone, gray, white, finely crystalline, fossiliferous, chalky in part, no shows.

3323-3332' Limestone, gray, white, fossiliferous/oolitic, chalky poor porosity, brown stain, trace of free oil and questionable odor in fresh samples.

Drill Stem Test #1 3261-3335

Times: 30-30-30-30

Blow: Weak

Recovery: 10' mud, show of oil

Pressures: ISIP 107 psi
FSIP 95 psi
IFP 47-49 psi
FFP 45-49 psi
HSH 1600-1534 psi

3339-3346' Limestone, tan, gray, oomoldic, fair oomoldic porosity (barren).

3380-3391' Limestone, white, oomoldic, chalky in part, brown spotty stain, no free oil and no odor in fresh samples.

3400-3410' Limestone, gray/white, oomoldic, oolitic, scattered porosity, light brown stain, trace of free oil and no odor in fresh samples.

3420-3426' Limestone, as above, spotty brown stain and golden brown stain, trace of free oil and no odor in fresh samples.

3441-3450' Limestone, white, gray, slightly oolitic, chalky, poor stain, trace of free oil and no odor.

Drill Stem Test #2

3375-3454

Times: 30-30-45-60

Blow: Strong

**Recovery: 63' mud, trace of oil
126' very slightly oil cut mud
(2.5% oil; 97.5% mud)
73' slightly oil cut mud
(10% oil; 90% mud)**

**Pressures: ISIP Invalid psi
FSIP 859 psi
IFP 59-118 psi
FFP 122-174 psi
HSH 1713-1626 psi**

3462-3470' Limestone, cream, white, fossiliferous, chalky, brown stain, weak, show of free oil and no odor in fresh samples.

VIOLA SECTION

3495-3514' Chert, white, gray, semi-tripolitic, scattered pinpoint and vuggy porosity, brown and black stain, saturation, show of free oil (gassy) and faint odor in fresh samples.

Drill Stem Test #3

3460-3525

Times: 30-30-30-45

Blow: Weak

Recovery: 15' mud

**Pressures: ISIP 825 psi
FSIP 921 psi
IFP 45-47 psi
FFP 46-50 psi
HSH 1724-1689 psi**

ARUCKLE SECTION

3561-3570' Dolomite, tan, oomoldic, good oomoldic porosity, brown and golden brown stain, show of free oil and good odor; plus white, oolitic chert.

3570-3578' Dolomite, tan/gray, finely crystalline, sucrosic, fair stain and saturation, show of free oil and odor in fresh samples.

Drill Stem Test #4 **3506-3578**

Times: 30-30-45-60
Blow: Strong
Recovery: 381' gas in pipe
61' very slightly oil cut mud
(2.5% oil; 97.5% mud)
Pressures: ISIP 123 psi
FSIP 151 psi
IFP 53-68 psi
FFP 64-72 psi
HSH 1755-1682 psi

3578-3598' Dolomite, gray/tan, finely crystalline sucrosic, fair inter-crystalline porosity, brown and gray stain, show of free oil and good odor in fresh samples.

Drill Stem Test #5 **3578-3598**

Times: 30-45-45-45
Blow: Strong
Recovery: 39' gas in pipe
50' muddy oil
(10% gas; 40% oil; 50% mud)
Pressures: ISIP 296 psi
FSIP 341 psi
IFP 25-28 psi
FFP 27-36 psi
HSH 1772-1691 psi

3598-3618' Dolomite, white, gray, fine and medium crystalline, sucrosic, fair to good inter-crystalline porosity, brown to dark brown and gray stain, show of free oil and faint odor in fresh samples.

Drill Stem Test #6 **3598-3618**

Times: 30-30-45-45
Blow: Strong
Recovery: 555' gas in pipe
75' clean oil
10' heavily oil cut mud
(35% oil; 65% mud)
Pressures: ISIP 144 psi
FSIP 182 psi
IFP 24-40 psi
FFP 33-46 psi
HSH 1797-1693 psi

3618-3640' Dolomite, white/gray, scattered porosity, brown stain, show of free oil and good odor in fresh samples.

Drill Stem Test #7 **3618-3640**

Times: 30-30-30-45

Blow: Weak

Recovery: 5' mud

Pressures:

ISIP	106	psi
FSIP	104	psi
IFP	25-32	psi
FFP	36-42	psi
HSH	1784-1703	psi

3640-3660' Dolomite, as above, fair stain and saturation, show of free oil and faint to fair odor in fresh samples; plus white chert.

3660-3670' Dolomite, tan, gray and white, fine to medium crystalline, sucrosic, fair inter-crystalline porosity, gray and brown to dark brown stain and saturation, show of free oil and faint odor in fresh samples.

3670-3680' Dolomite, tan, fine and medium crystalline, finely oomoldic, fair to good oomoldic porosity, brown stain, show of free oil and faint odor in fresh samples.

3680-3700' Dolomite, as above, plus tan, medium crystalline, dolomite, few sandy fair brown and black stain, show of free oil and faint and fair odor in fresh samples.

Rotary Total Depth 3700
Log Total Depth 3700

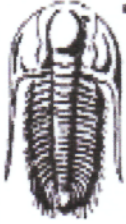
Recommendations:

The 5 1/2" production casing set and cemented on the Mai Oil Operations Reiser #10.

Respectfully yours,

James C. Musgrove
Petroleum Geologist





TRILOBITE TESTING, INC

DRILL STEM TEST REPORT

Mai Oil Operations, Inc.
 8411 Preston Rd. STE. 800
 Dallas TX 75225-5520
 ATTN: Jim Musgrove

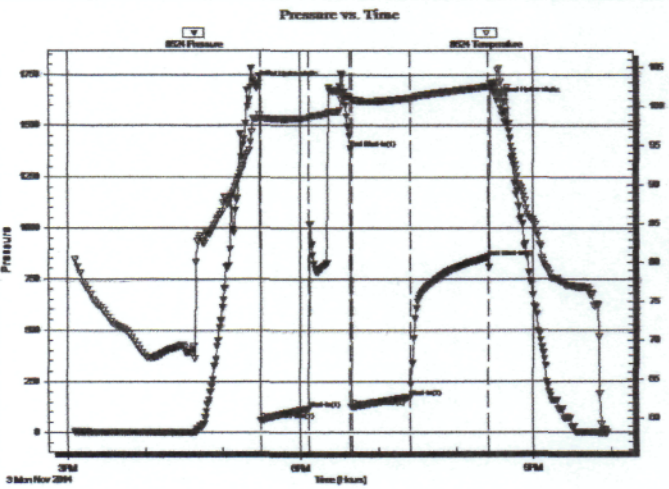
21-21s-12w Stafford,KS
Reiser #10
 Job Ticket: 60475 **DST#: 2**
 Test Start: 2014.11.03 @ 15:05:00

GENERAL INFORMATION:

Formation: **Lansing "H-J"**
 Deviated: **No Whipstock:** ft (KB)
 Time Tool Opened: 17:29:30
 Time Test Ended: 21:57:00
 Interval: **3375.00 ft (KB) To 3454.00 ft (KB) (TVD)**
 Total Depth: **3454.00 ft (KB) (TVD)**
 Hole Diameter: **7.88 inches** Hole Condition: **Poor**
 Test Type: **Conventional Bottom Hole (Initial)**
 Tester: **Shane Konzern**
 Unit No: **S3/32/Great Bend**
 Reference Elevations: **1859.00 ft (KB)**
1849.00 ft (CF)
 KB to GR/CF: **10.00 ft**

Serial #: 8524 **Inside**
 Press@RunDepth: **171.42 psig @ 3450.17 ft (KB)** Capacity: **8000.00 psig**
 Start Date: **2014.11.03** End Date: **2014.11.03** Last Calib.: **2014.11.03**
 Start Time: **15:06:00** End Time: **21:57:00** Time On Btm: **2014.11.03 @ 17:24:30**
 Time Off Btm: **2014.11.03 @ 20:31:30**

TEST COMMENT: FP 30 Minutes. BOB in 3 minutes.
 ISl 30 Minutes.
 2nd Open/ 45 Minutes. Good blow built to bottom of 5 gallon bucket in 17 minutes.
 2nd Shut In/ 60 Minutes. Weak surface blow back.



PRESSURE SUMMARY

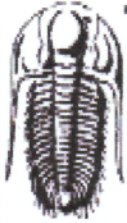
Time (Min.)	Pressure (psig)	Temp (deg F)	Annotation
0	1705.53	98.37	Initial Hydro-static
5	60.70	98.47	Open To Flow (1)
42	116.02	98.49	Shut-In(1)
74	1388.34	101.22	End Shut-In(1)
75	123.58	100.90	Open To Flow (2)
120	171.42	101.09	Shut-In(2)
181	858.48	102.55	End Shut-In(2)
187	1625.24	102.56	Final Hydro-static

Recovery

Length (ft)	Description	Volume (bbl)
73.00	OCM 10% oil, 90% mud	1.02
126.00	VSOOM 2.5% oil, 97.5% mud	1.77
63.00	100% mud with trace of oil.	0.88

Gas Rates

	Choke (inches)	Pressure (psig)	Gas Rate (Mcf/d)



TRILOBITE TESTING, INC

DRILL STEM TEST REPORT

Mai Oil Operations, Inc.
 8411 Preston Rd. STE. 800
 Dallas TX 75225-5520
 ATTN: Jim Musgrove

21-21s-12w Stafford,KS
Reiser #10
 Job Ticket: 60401 **DST#: 3**
 Test Start: 2014.11.04 @ 18:20:00

GENERAL INFORMATION:

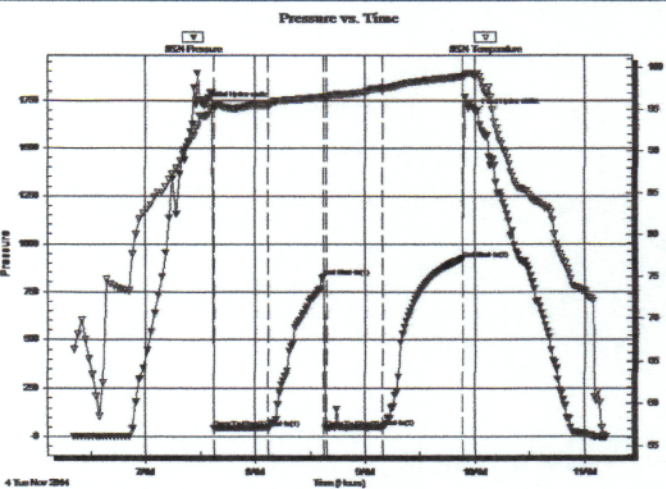
Formation: **Viola Sands**
 Deviated: No Whipstock: ft (KB)
 Time Tool Opened: 19:37:30
 Time Test Ended: 23:12:00
 Interval: **3460.00 ft (KB) To 3525.00 ft (KB) (TVD)**
 Total Depth: 3525.00 ft (KB) (TVD)
 Hole Diameter: 7.88 inches Hole Condition: Poor
 Test Type: Conventional Bottom Hole (Initial)
 Tester: Shane Konzern
 Unit No: S3
 Reference Elevations: 1859.00 ft (KB)
 1849.00 ft (CF)
 KB to GR/CF: 10.00 ft

Serial #: 8524

Inside

Press@RunDepth: 50.94 psig @ 3520.25 ft (KB) Capacity: 8000.00 psig
 Start Date: 2014.11.04 End Date: 2014.11.04 Last Calib.: 2014.11.04
 Start Time: 06:21:00 End Time: 11:12:00 Time On Btm: 2014.11.04 @ 07:32:30
 Time Off Btm: 2014.11.04 @ 10:00:30

TEST COMMENT: FP 30 Minutes. Weak blow built to 1"
 ISI 30 Minutes. No blow back.
 FFP 30 Minutes. No blow, flushed tool and had good flush bubbles and gained no blow.
 FSI 45 Minutes. No blow back.



PRESSURE SUMMARY

Time (Min.)	Pressure (psig)	Temp (deg F)	Annotation
0	1724.20	94.22	Initial Hydro-static
5	45.28	95.33	Open To Flow (1)
35	47.49	95.54	Shut-In(1)
65	825.46	96.49	End Shut-In(1)
67	46.70	96.36	Open To Flow (2)
97	50.94	97.56	Shut-In(2)
141	921.92	98.95	End Shut-In(2)
148	1689.97	99.02	Final Hydro-static

Recovery

Length (ft)	Description	Volume (bbl)
15.00	100% Mud	0.21

Gas Rates

Choke (inches)	Pressure (psig)	Gas Rate (Mcf/d)



TRILOBITE TESTING, INC.

DRILL STEM TEST REPORT

Mai Oil Operations, Inc.

21-21s-12w Stafford,KS

8411 Preston Rd. STE. 800
Dallas TX 75225-5520

Reiser #10

Job Ticket: 60402

DST#: 4

ATTN: Jim Musgrove

Test Start: 2014.11.04 @ 19:40:00

GENERAL INFORMATION:

Formation: **Arbuckle**

Deviated: No Whipstock: ft (KB)

Time Tool Opened: 20:48:30

Time Test Ended: 01:08:30

Test Type: Conventional Bottom Hole (Initial)

Tester: Shane Konzern

Unit No: S3

Interval: **3506.00 ft (KB) To 3578.00 ft (KB) (TVD)**

Reference Elevations: 1859.00 ft (KB)

Total Depth: 3578.00 ft (KB) (TVD)

1849.00 ft (CF)

Hole Diameter: 7.88 inches Hole Condition: Poor

KB to GR/CF: 10.00 ft

Serial #: 8524 Inside

Press@RunDepth: 72.36 psig @ 3574.29 ft (KB)

Capacity: 8000.00 psig

Start Date: 2014.11.04 End Date: 2014.11.05

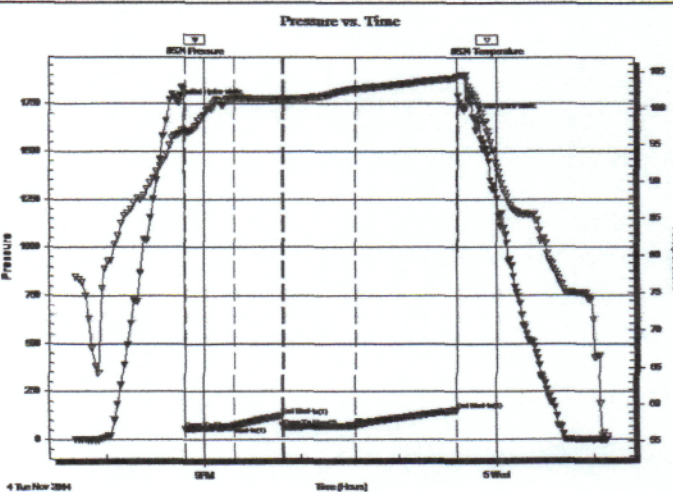
Last Calib.: 2014.11.05

Start Time: 19:41:00 End Time: 01:08:30

Time On Btm: 2014.11.04 @ 20:44:30

Time Off Btm: 2014.11.04 @ 23:45:30

TEST COMMENT: FFP 30 Minutes. BOB in 14 minutes.
ISI 30 Minutes. No blow back.
FFP 45 Minutes. BOB in 11 minutes and 20 seconds.
FSI 60 Minutes. No blow back.



PRESSURE SUMMARY

Time (Min.)	Pressure (psig)	Temp (deg F)	Annotation
0	1755.20	96.34	Initial Hydro-static
4	53.82	96.66	Open To Flow (1)
34	68.19	101.30	Shut-In(1)
64	123.77	101.19	End Shut-In(1)
65	64.42	101.17	Open To Flow (2)
109	72.36	102.57	Shut-In(2)
171	151.98	104.11	End Shut-In(2)
181	1682.38	101.76	Final Hydro-static

Recovery

Length (ft)	Description	Volume (bbl)
0.00	381 feet gas in pipe	0.00
60.00	VSOCM 2.5% Oil, 97.5% Mud	0.84

Gas Rates

	Choke (inches)	Pressure (psig)	Gas Rate (Mcf/d)



TRILOBITE TESTING, INC.

DRILL STEM TEST REPORT

Mai Oil Operations, Inc.
 8411 Preston Rd. STE. 800
 Dallas TX 75225-5520
 ATTN: Jim Musgrove

21-21s-12w Stafford,KS
Reiser #10
 Job Ticket: 60403 **DST#: 5**
 Test Start: 2014.11.05 @ 06:50:00

GENERAL INFORMATION:

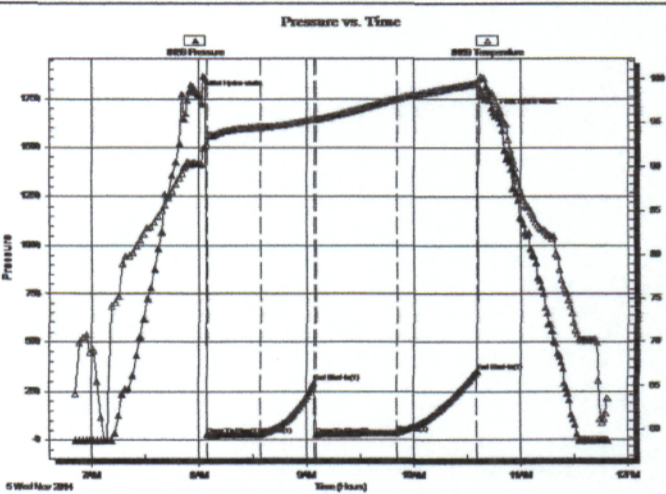
Formation: **Arbuckle**
 Deviated: No Whipstock: ft (KB)
 Time Tool Opened: 08:03:00
 Time Test Ended: 11:47:30
 Interval: **3578.00 ft (KB) To 3598.00 ft (KB) (TVD)**
 Total Depth: 3598.00 ft (KB) (TVD)
 Hole Diameter: 7.88 inches Hole Condition: Poor
 Test Type: Conventional Bottom Hole (Initial)
 Tester: Shane Konzern
 Unit No: S3/32/Great Bend
 Reference Elevations: 1859.00 ft (KB)
 1849.00 ft (CF)
 KB to GR/CF: 10.00 ft

Serial #: 8159

Outside

Press@RunDepth: 350.35 psig @ 3595.00 ft (KB)
 Start Date: 2014.11.05 End Date: 2014.11.05
 Start Time: 06:51:00 End Time: 11:49:00
 Capacity: 8000.00 psig
 Last Calib.: 1899.12.30
 Time On Btm: 2014.11.05 @ 07:59:30
 Time Off Btm: 2014.11.05 @ 10:44:30

TEST COMMENT: IFP 30 Minutes. BOB in 17 minutes.
 ISI 30 Minutes. No blow back.
 FFP 45 Minutes. BOB in 13 minutes.
 FSI 45 Minutes. No blow back.



PRESSURE SUMMARY

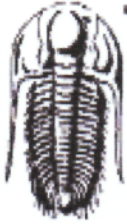
Time (Min.)	Pressure (psig)	Temp (deg F)	Annotation
0	1773.20	90.29	Initial Hydro-static
5	24.78	92.40	Open To Flow (1)
35	27.71	94.44	Shut-In(1)
65	295.21	95.38	End Shut-In(1)
66	27.24	95.36	Open To Flow (2)
111	35.51	97.75	Shut-In(2)
156	350.35	99.53	End Shut-In(2)
165	1683.86	98.07	Final Hydro-static

Recovery

Length (ft)	Description	Volume (bbl)
0.00	391 feet gas in pipe	0.00
50.00	GOCM 10% gas, 40% oil, 50% mud	0.70

Gas Rates

	Choke (Inches)	Pressure (psig)	Gas Rate (Mcf/d)



TRILOBITE TESTING, INC.

DRILL STEM TEST REPORT

Mai Oil Operations, Inc.
 8411 Preston Rd. STE. 800
 Dallas TX 75225-5520
 ATTN: Jim Musgrove

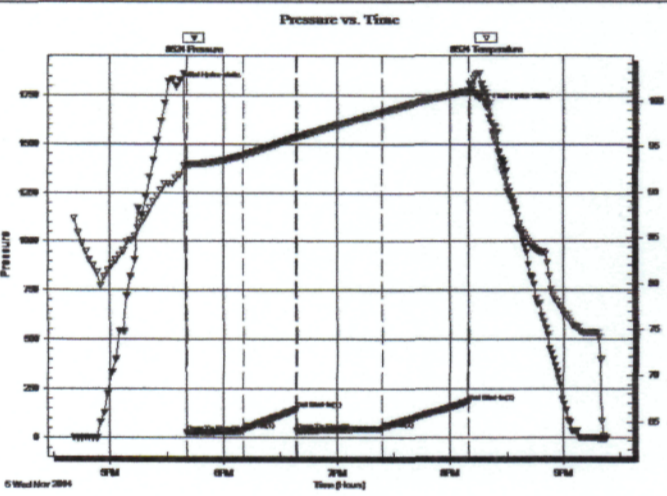
21-21s-12w Stafford,KS
Reiser #10
 Job Ticket: 60404 **DST#: 6**
 Test Start: 2014.11.05 @ 16:40:00

GENERAL INFORMATION:

Formation: **Arbuckle**
 Deviated: No Whipstock: ft (KB)
 Time Tool Opened: 17:40:30
 Time Test Ended: 21:23:00
 Interval: **3598.00 ft (KB) To 3618.00 ft (KB) (TVD)**
 Total Depth: 3618.00 ft (KB) (TVD)
 Hole Diameter: 7.88 inches Hole Condition: Poor
 Test Type: Conventional Bottom Hole (Initial)
 Tester: Shane Konzern
 Unit No: S3
 Reference Elevations: 1859.00 ft (KB)
 1849.00 ft (CF)
 KB to GR/CF: 10.00 ft

Serial #: 8524 Inside
 Press@RunDepth: 46.57 psig @ 3614.00 ft (KB) Capacity: 8000.00 psig
 Start Date: 2014.11.05 End Date: 2014.11.05 Last Calib.: 2014.11.05
 Start Time: 16:41:00 End Time: 21:23:00 Time On Btm: 2014.11.05 @ 17:35:00
 Time Off Btm: 2014.11.05 @ 20:19:00

TEST COMMENT: FP 30 Minutes. BOB in 7 minutes and 45 seconds.
 ISI 30 Minutes. No blow back.
 FFP 45 Minutes. BOB in 6 minutes.
 FSI 45 Minutes. No blow back.



PRESSURE SUMMARY

Time (Min.)	Pressure (psig)	Temp (deg F)	Annotation
0	1797.49	91.53	Initial Hydro-static
6	24.85	92.86	Open To Flow (1)
36	40.19	94.02	Shut-In(1)
64	144.22	95.93	End Shut-In(1)
64	33.98	95.94	Open To Flow (2)
109	46.57	98.75	Shut-In(2)
155	182.06	101.04	End Shut-In(2)
164	1693.08	99.68	Final Hydro-static

Recovery

Length (ft)	Description	Volume (bbl)
0.00	555 Feet Gas in pipe	0.00
75.00	100% Clean gassy oil	1.05

Gas Rates

	Choke (inches)	Pressure (psig)	Gas Rate (Mcf/d)



TRILOBITE TESTING, INC.

DRILL STEM TEST REPORT

Mai Oil Operations, Inc.
 8411 Preston Rd. STE. 800
 Dallas TX 75225-5520
 ATTN: Jim Musgrove

21-21s-12w Stafford, KS
Reiser #10
 Job Ticket: 60405 **DST#: 7**
 Test Start: 2014.11.06 @ 02:45:00

GENERAL INFORMATION:

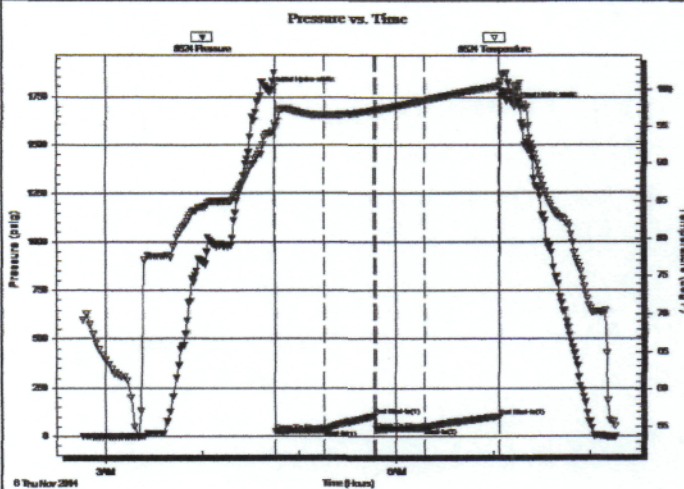
Formation: **Arbuckle**
 Deviated: No Whipstock: ft (KB)
 Time Tool Opened: 04:45:30
 Time Test Ended: 08:16:00
 Interval: **3618.00 ft (KB) To 3640.00 ft (KB) (TVD)**
 Total Depth: 3640.00 ft (KB) (TVD)
 Hole Diameter: 7.88 inches Hole Condition: Poor
 Test Type: Conventional Bottom Hole (Initial)
 Tester: Shane Konzern
 Unit No: S3
 Reference Elevations: 1859.00 ft (KB)
 1849.00 ft (CF)
 KB to GR/CF: 10.00 ft

Serial #: 8524

Inside

Press@RunDepth: 42.15 psig @ 3636.00 ft (KB) Capacity: 8000.00 psig
 Start Date: 2014.11.06 End Date: 2014.11.06 Last Calib.: 2014.11.06
 Start Time: 02:46:00 End Time: 08:16:00 Time On Btm: 2014.11.06 @ 04:42:30
 Time Off Btm: 2014.11.06 @ 07:13:00

TEST COMMENT: FFP 30 Minutes. Weak blow built to 3"
 ISI 30 Minutes. No blow back.
 FFP 30 Minutes. Weak blow built to 1 1/2"
 FSI 45 Minutes. No blow back.



PRESSURE SUMMARY

Time (Min.)	Pressure (psig)	Temp (deg F)	Annotation
0	1784.97	94.09	Initial Hydro-static
3	25.20	95.03	Open To Flow (1)
33	32.79	96.57	Shut-In(1)
64	106.13	97.29	End Shut-In(1)
65	36.59	97.31	Open To Flow (2)
95	42.15	98.58	Shut-In(2)
142	104.31	100.56	End Shut-In(2)
151	1703.05	99.75	Final Hydro-static

Recovery

Length (ft)	Description	Volume (bbl)
5.00	100% Mud	0.07

Gas Rates

	Choke (Inches)	Pressure (psig)	Gas Rate (Mcf/d)

QUALITY OILWELL CEMENTING, INC.

Federal Tax I.D.# 20-2886107

Phone 785-483-2025
Cell 785-324-1041

Home Office P.O. Box 32 Russell, KS 67665

No. 870

Date	10-30-14	Sec.	21	Twp.	21	Range	12	County	Stafford	State	Ks	On Location		Finish	12:45AM
------	----------	------	----	------	----	-------	----	--------	----------	-------	----	-------------	--	--------	---------

Location *Great Bend, Ks - 115 to 170 Rd, SE to*

Lease	<i>Reiser</i>	Well No.	<i>10</i>	Owner	<i>SORD, 1/2 NE 1/4</i>
Contractor	<i>Southwind</i>	#	<i>3</i>	To Quality Oilwell Cementing, Inc. You are hereby requested to rent cementing equipment and furnish cementer and helper to assist owner or contractor to do work as listed.	
Type Job	<i>Surface</i>				
Hole Size	<i>12 1/4"</i>	T.D.	<i>641'</i>	Charge To	<i>Map oil operations</i>
Csg.	<i>8 5/8"</i>	Depth	<i>641'</i>	Street	
Tbg. Size		Depth		City	State
Tool		Depth		The above was done to satisfaction and supervision of owner agent or contractor.	
Cement Left in Csg.	<i>20'</i>	Shoe Joint	<i>20'</i>	Cement Amount Ordered	<i>400 Sx 60/140 3% CC 2% Gel</i>
Meas Line		Displace	<i>39 1/2 BLS</i>	<i>1/2 H Flowseal</i>	

EQUIPMENT

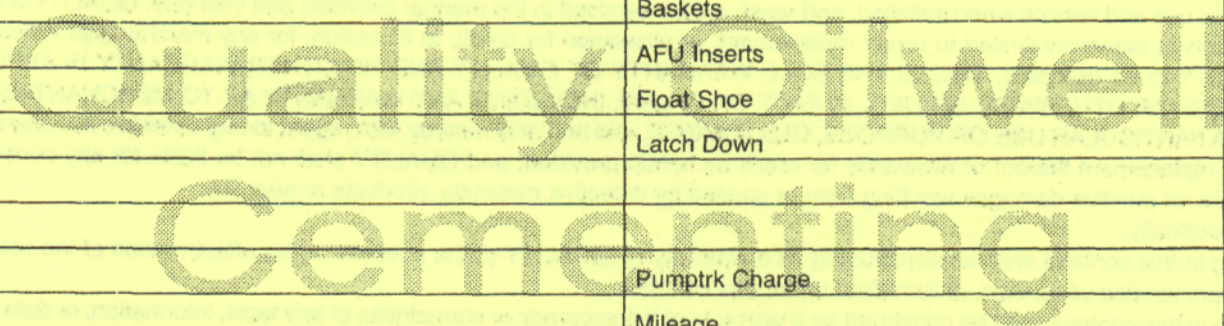
Pumptrk	<i>17</i>	No.	Cementer		Common
			Helper	<i>Traavis</i>	
Bulktrk	<i>4</i>	No.	Driver	<i>Down</i>	Poz. Mix
			Driver		Gel.
Bulktrk	<i>p.u.</i>	No.	Driver	<i>Rick</i>	Calcium
			Driver		

JOB SERVICES & REMARKS

Remarks:	<i>Cement did Circulate</i>	Hulls	
Rat Hole		Salt	
Mouse Hole		Flowseal	
Centralizers		Kol-Seal	
Baskets		Mud CLR 48	
D/V or Port Collar		CFL-117 or CD110 CAF 38	
		Sand	

FLOAT EQUIPMENT

Guide Shoe	<i>Rubber Plug</i>
Centralizer	
Baskets	
AFU Inserts	
Float Shoe	
Latch Down	



Pumptrk Charge		Tax	
Mileage		Discount	
Signature	<i>Dev. [unclear]</i>	Total Charge	

QUALITY OILWELL CEMENTING, INC.

Federal Tax I.D.# 20-2886107

Phone 785-483-2025
Cell 785-324-1041

Home Office P.O. Box 32 Russell, KS 67665

No. 877

Date	11-7-14	Sec.	21	Twp.	21	Range	12	County	Stafford	State	KS	On Location		Finish	3:45 AM
Location													Great Bend 11s to 170 Rd SE 1/2 J E into		

Lease	Reiser	Well No.	10	Owner	To Quality Oilwell Cementing, Inc. You are hereby requested to rent cementing equipment and furnish cementer and helper to assist owner or contractor to do work as listed.										
Contractor	Southwind		3	Charge To	Maj. operations										
Type Job	Production			Street											
Hole Size	7 7/8	T.D.	3700	City	State										
Csg.	5 1/2 14" New	Depth	3699	The above was done to satisfaction and supervision of owner agent or contractor.											
Tbg. Size		Depth		Cement Amount Ordered 160 sy 6% 40 10% salt											
Tool		Depth		2% gel 1/4" b flow seal 1000 gal mud clar											
Cement Left in Csg.	20.65	Shoe Joint	20.65	EQUIPMENT											
Meas Line		Displace	89 3/4	Common											

Pumptrk	16	No.	Cementer	Helper	Driver	Driver	Driver	Driver	Poz. Mix						
Bulktrk	3	No.	Driver	Driver	Driver	Driver	Driver	Driver	Gel.						
Bulktrk	Pu	No.	Driver	Driver	Driver	Driver	Driver	Driver	Calcium						

JOB SERVICES & REMARKS													Hulls		
Remarks:													Salt		
Rat Hole 30 sy													Flowseal		
Mouse Hole													Kol-Seal		
Centralizers 1 thru 13 15													Mud CLR 48 1,000 gal		
Baskets													CFL-117 or CD110 CAF 38		
D/V or Port Collar													Sand		
Pipe on bottom broke circulation													Handling		
Pumped 100 gal mud clear													Mileage		

Plugged rat hole 30 sy													FLOAT EQUIPMENT		
Hooked to 5 1/2 pumped 130 sy													Guide Shoe		
Unhooked washed pump and lines													Centralizer turbos 14		
Released plug and displaced w													Baskets		
89 3/4 bbls water. Replaced with													AFU Inserts		
LIFT PS 600													Float Shoe		
Plug land @ PS 250													Latch Down 1 Rubber plug		

Pumptrk Charge													Tax		
Mileage													Discount		
Signature													Total Charge		