

**Shakespeare Oil Company, Inc.
Nichols No.2-15
2200' FSL and 1700' FEL
SW NE NW SE
Sec 15 T16S R34W
Scott County, Kansas**

Geological Report
by

Macklin M. Armstrong, P.G.
License Number 743

Scale 1:240 Imperial

Well Name:	Nichols No. 2-15	
Surface Location:	Sec 15 T16S R34W	
Bottom Location:	2200' FSL and 1700' FEL	
API:	15-171-21110	
License Number:	7311	
Spud Date:	11/19/2014	Time: 5:30 PM
Region:	Scott County, Kansas	
Drilling Completed:	11/29/2014	Time: 4:42 AM
Surface Coordinates:		
Bottom Hole Coordinates:		
Ground Elevation:	3122.00ft	
K.B. Elevation:	3134.00ft	
Logged Interval:	3800.00ft	To: 4865.00ft
Total Depth:	4865.00ft	
Formation:	Mississippi	
Drilling Fluid Type:	Chemical/Fresh Water Gel	

OPERATOR

Company:	Shakespeare Oil Company, Inc.	
Address:	202 West Main Street Salem, Illinois 62881	
Contact Geologist:	Don Williams	
Contact Phone Nbr:	618-548-1585	
Well Name:	Nichols No. 2-15	
Location:	Sec 15 T16S R34W	API: 15-171-21110
Pool:	Oil	Field: Radnor
State:	Kansas	Country: USA

CONTRACTOR

Contractor: Southwind Drilling, Inc.
 Rig #: 70
 Rig Type: mud rotary
 Spud Date: 11/19/2014
 TD Date: 11/29/2014
 Rig Release: 11/30/2014

Time: 5:30 PM
 Time: 4:42 AM
 Time: 6:30 AM

SURFACE CO-ORDINATES

Well Type: Vertical
 Longitude: 101.060474741
 N/S Co-ord:
 E/W Co-ord:

Latitude: 38.662048082

ELEVATIONS

K.B. Elevation: 3134.00ft
 K.B. to Ground: 12.00ft

Ground Elevation: 3122.00ft

NOTES

Date	Depth at 7 am	Activity
11-19-14	MIRU	Spud at 5:30 pm
11-20-14	268	WOC
11-21-14	1887	Drilling
11-22-14	2766	Drilling
11-23-14	3412	Drilling
11-24-14	3814	Drilling
11-25-14	4242	Drilling
11-26-14	4480	CTCH for DST No. 1
11-27-14	4581	Drilling
11-28-14	4722	OB with DST No. 2
11-29-24	4865	Logging
11-30-24	4865	Set 5 1/2"

Surface Casing: 8 5/8" 23# at 268'
 Production Casing: 5 1/2" 15.5# at 4864'

Deviation: 268' - 3/4°
 4480' - 1 1/4°
 4865' - 2°

Bit Record:	Make	Size	Type	Depth In	Depth Out	Hours
	Reed	12 1/4"	Tooth	Surface	268	2 1/2
	Reed	7 7/8"	S52P	268	4865	143.5

Drill Stem Tests:

DST No. 1 4438 to 4480 Marmaton A
 15-30-45-90
 Recovery: 587' GIP
 40' CO (5%G, 95%O - 31° gravity)
 252' GMCO (10%G, 20%M, 70%O)
 252' GMCO (30%G, 20%M, 50%O)

IHP 2234 FHP 2115
 IFP 32-88 FFP 97-225
 ISIP 1113 FSIP 1012
 Temp 119°

DST No. 2 4622 to 4722 Johnson Zone
 30-30-45-60
 Recovery: 282' GIP
 93' OCGM (15%O, 30%G, 55%M)

IHP 2299 FHP 2286
 IFP 27-40 FFP 42-55

ISIP 600 FSIP 1161
Temp 114°








Formation	Sample	E-Log	Datum	Well 1	Well 2
Anhydrite	2453	2453	+681		
Base/Anhydrite	2473	2473	+661	+6	+4
Heebner	3989	3987	-853	+1	+9
Lansing	4030	4028	-894	0	+9
Muncie Creek	4211	4209	-1075	0	+10
Stark	4308	4306	-1172	-4	+7
Hushpuckney	4349	4348	-1214	-1	+10
Base/Kansas City	4388	4388	-1254	-4	+9
Marmaton	4446	4443	-1309	-3	+8
Pawnee	4525	4523	-1389	-5	+4
Myrick Station	4558	4557	-1423	-5	+5
Fort Scott	4578	4577	-1443	-3	+2
Cherokee Shale	4604	4603	-1469	-3	+7
Johnson Zone	4647	4646	-1512	-2	+10
Mississippi	4786	4786	-1652	-24	+3
Total Depth	4865	4865	-1731		

Well 1: Shakespeare Oil Company, Inc. Nichols No. 1-15 1390' FNL and 1850' FEL Sec 15 T16S R34W
Well 2: Shakespeare Oil Company, Inc. Radnor No. 1-14 1550' FSL and 1850' FWL Sec 14 T16S R34W

Pipe was set to further test the Marmaton A Zone.

Respectfully submitted,
Macklin M. Armstrong

ROCK TYPES

 Lmst fw7>	 shale, gry	 shale, red	 Siltst
 shale, grn	 Carbon Sh	 Ss	

ACCESSORIES

MINERAL

- ▲ Chert, dark
- P Pyrite
- Sandy
- △ Chert White

FOSSIL










- F Fossils < 20%
- Oolite
- ⊕ Oomoldic

TEXTURE

- C Chalky

OTHER SYMBOLS




MISC

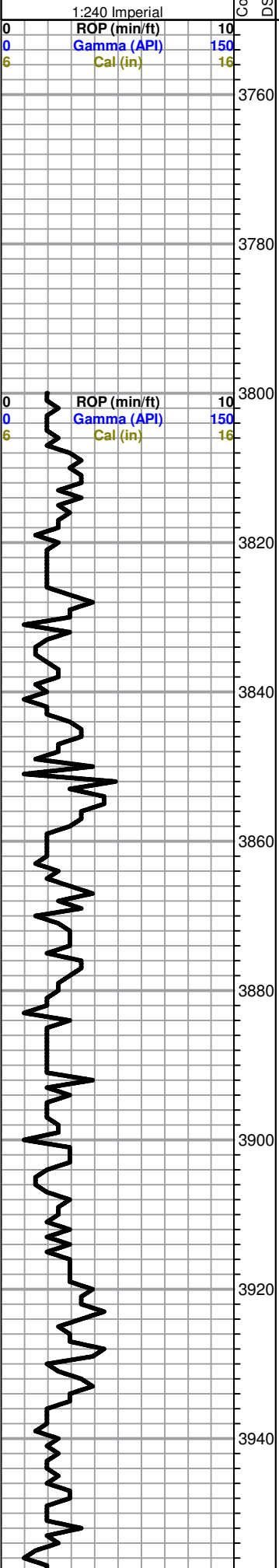
-  Daily Report
-  Digital Photo
-  Document
-  Folder
-  Link
-  Vertical Log File
-  Horizontal Log File
-  Core Log File
-  Drill Cuttings Rpt

DST

-  DST Int
-  DST alt
-  Core

Printed by GEOstrip VC Striplog version 4.0.7.0 (www.grsi.ca)

Curve Track #1	ROP (min/ft)	Gamma (API)	Cal (in)	Depth Intervals	DST	Lithology	Oil Show	Geological Descriptions	Comment
									



Cored Interval
 DST Interval

Shakespeare Oil Company, Inc.
Nichols No. 2-15
2200' FSL and 1700' FEL
SW NE NW SE
Sec 15 T16S R34W
Scott County, Kansas

GL 3122 KB 3134

Mud Program:
 Mud Co/Service Mud
 Chemical Gel/Premix

Sample Cuttings:
 KGS Well Sample Library

Testing: Trilobite Testing

Electric Logs: Weatherford
 MPD/MDN
 MAI/MFE
 MML
 MSS

Deviation:
 268' - 3/4°
 4480' - 1 1/4°
 4865' - 2°

Ls-lt gry/gry f/mxln mhd/dns no por

Sh-gry/dk gry
 Ls-lt gry/gry f/xln dns no por

Sh-gry/dk gry

Ls-lt gry gry f/mxln mhd no por
 Ls-lt gry f/mxln mhd/dns sl fos no por
 Sh-gry/dk gry

Ls-lt gry f/mxln mhd sl fos fr inter xln por nsfo

Ls-lt gry f/mxln dns sl fos no por
 Sh-gry/dk gry

Ls-lt gry f/mxln mhd/dns sl fos no por

Sh-gry/dk gry
 Ls-lt gry f/mxln dns sl fos no por

Ls-crm/tan f/mxln mhd pr/fr inter xln por nsfo

Ls-crm/tan f/mxln dns no por
 Sh-gry/dk gry
 Ls-lt gry f/mxln dns no por

Sh-gry/dk gry

Sh-AA

Ls-lt gry f/mxln mhd/dns sl fos no por

Ls-AA

Ls-lt gry/tan f/mxln mhd/dns sl fos no por

Sh-gry/dk gry

Ls-tan/lt gry f/mxln dns sl fos no por
 Sh-blk carb

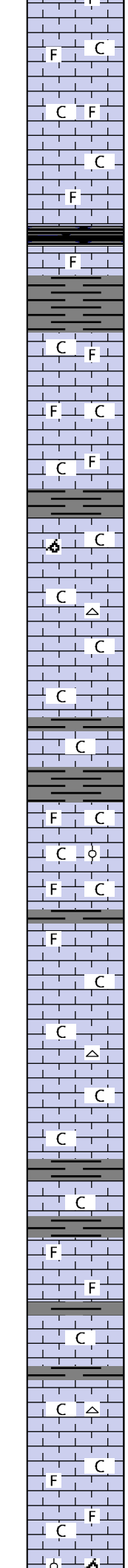
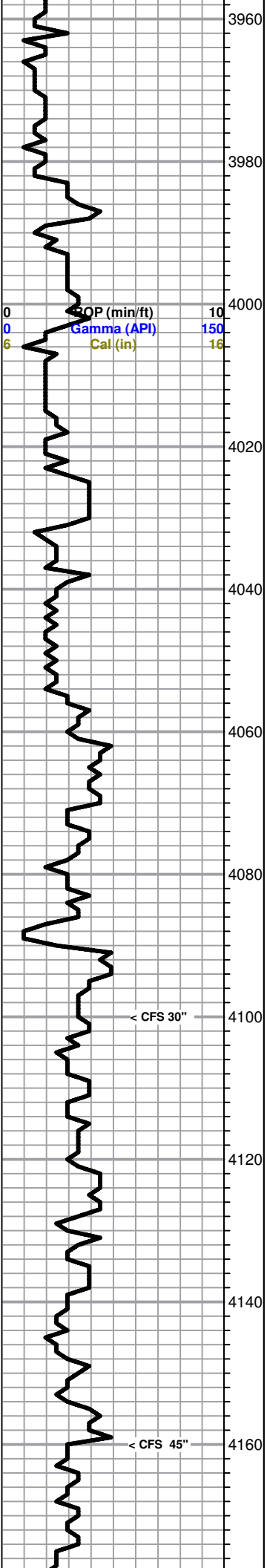
Ls-tan f/mxln mhd/dns sl clky no por
 Sh-gry/dk gry

Ls-tan fx/n mhd/dns sl clky sl fos no por sm Cht-crm fsh opaq

Ls-tan/lt gry f/mxln mhd/dns sl clky sl fos no por

Ls-tan/crm fxln mhd sl clky sl fos no por

Ls-AA



Ls-tan/lt gry f/mxln mhd sl clky sl fos no por sm Ls-tan fxln mhd with blk irregular shapped fos

Ls-AA

Ls-tan/lt gry/crm f/mxln mhd sl clky sl fos no por sm Ls-tan/lt gry fxln mhd with blk irregular shapped fos

Ls-tan/lt gry f/mxln mhd sl clky sl fos no por with sm Ls-wt fxln soft clky no por

Ls-lt gry/tan f/mxln dns sl fos no por

----- **Heebner 3989 -855** -----

Sh-blk carb

Ls-lt gry/tan f/mxln dns sl fos no por

Sh-gry/dk gry

Ls-crm/lt tan fxln mhd sl clky sl fos no por

Ls-AA

Ls-crm/tan fxln mhd sl clky sl fos no por

Ls-AA sm Ls-wt fxln soft clky no por

----- **Lansing 4030 -896** -----

Ls-crm/tan f/mxln mhd sl clky sl fos no por sm Ls-crm fxln mhd fos oom no por

Ls-tan/lt gry f/mxln mhd sl clky sl fos no por sm Cht-wt/crm fsh opac fos

Ls-AA

Ls-lt gy/crm f/mxln mhd/dns sl clky sl fos no por

Sh-gry/dk gry

Ls-lt gry/crm f/mxln dns sl clky no por

Sh-gry/dk gry

Ls-lt gry/crm/tan f/mxln mhd/dns sl clky fos no por

Ls-AA sm Ls-tan fxln mhd fos ool no por

Ls-lt gry/tan f/mxln mhd/dns sl clky sl fos no por

Sh-gry/dk gry

Ls-crm/lt gry mhd sl fos gd inter xln por nsfo

Ls-crm/lt tan fxln dns sl clky no por

Ls-AA

Ls-crm/lt gry f/mxln dns sl clky no por sm Cht-wt fsh opa

Ls-AA

Ls-crm/lt gry/tan f/mxln dns sl clky no por

Sh-gry/dk gry

Ls-crm/lt gry/tan f/mxln dns sl clky no por

Sh-gry/dk gry

Ls-lt gry/tan f/mxln dns sl fos no por

Sh-gry/dk gry

Ls-lt gry/tan f/mxln dns sl clky no por

Sh-gry/dk gry

Ls-lt gry/tan f/mxln mhd sl clky no por sm Cht-wt fsh opa

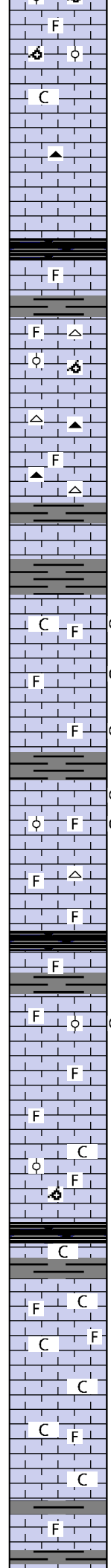
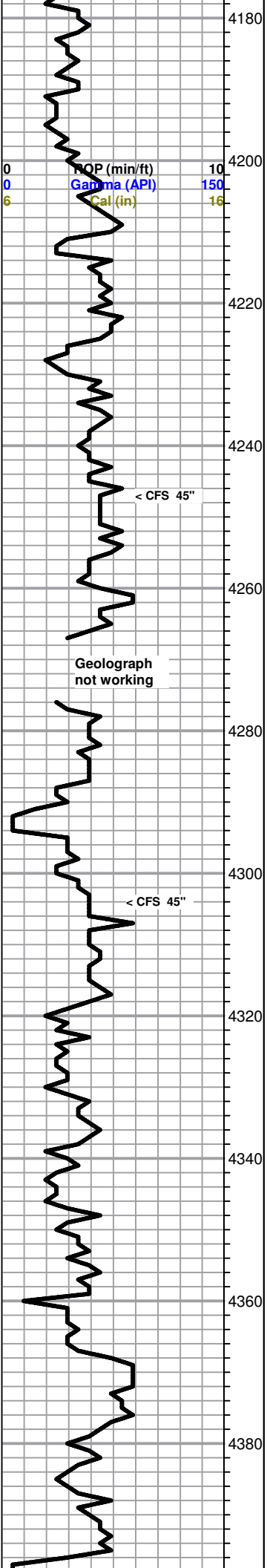
Ls-lt gry/tan f/mxln dns sl clky no por

Ls-crm/lt tan fxln mhd sl clky no por sm Ls-gry f/mxln mhd/dns fos no por

Ls-AA

Ls-tan/lt gry f/mxln mhd sl fos no por sm Ls-tan mhd fxln fos

All formation tops on this geological log have been correlated back to the electric log



ool and oom no por

Ls-AA

Ls-lt gry/crm fxln mhd sl clky no por

Ls-lt gry fxln mhd/dns no por sm Cht-gry/lt gry fsh opaq

Ls-lt gry fxln dns no por

----- **Muncie Creek 4211 -1077** -----

Sh-blk carb

Ls-lt gry/tan fxln dns sl fos no por

Sh-gry/dk gry

Ls-lt gry fxln dns sl fos no por sm Cht-wt/lt gry fsh opaq

Ls-tan fxln mhd fos ool and oom fr inter ool por nsfo

Ls-lt gry/tan fxln dns no por sm Cht-wt/lt gry fsh opaq

Ls-lt gry fxln dns no por and Ls-tan f/mxln mhd sl fos no por sm Cht-lt gry/wt fsh opaq

Ls-lt gry/gry f/mxln mhd/dns no por sm Cht-wt/lt gry fsh opaq

Sh-gry/dk gry

Ls-lt gry/tan f/mxln dns no por

Sh-gry/dk gry

Ls-lt gry/tan f/mxln mhd/dns sl fos no por sm Ls-tan fxln mhd sl clky pr inter xln vug por dk brn to blk spt stn fr cut vssfo on brk no odor

Ls-lt gry/tan f/mxln mhd sl fos no por sm Ls-tan fxln mhd pr/fr inter xln por dk brn spt stn gd cut fsfo on brk faint odor

Ls-tan/gry/brn f/mxln mhd/dns sl fos no por sm Ls-tan fxln mhd pr inter xln por dk brn spt stn sl cut vssfo on brk no odor

Sh-gry/dk gry

Ls-tan/gry f/mxln mhd no por sm Ls-tan fxln mhd fr inter xln por dk brn to blk spt stn sl cut vssfo on brk no odor

Ls-crm/lt gry fxln fos sm pcs sl ooc fr inter xln/vug por dk brn to blk spt stn sl cut fsfo on brk faint odor

Ls-tan/gry/brn f/mxln mhd/dns sl fos no por sm Cht-wt fsh opaq

Ls-tan/lt gry/lt brn f/mxln dns sl fos no por

----- **Stark 4308 -1174** -----

Ls-lt gry/gry f/mxln dns sl fos no por

Sh-gry/dk gry

Ls-lt gry/tan mhd sl clky fos sl ool no por sm Ls-tan fxln mhd fos ooc show of blk tarry oil

Ls-tan/lt gry f/mxln mhd sl fos no por

Ls-lt gry/crm f/mxln dns sl fos no por

Ls-lt gry/crm f/mxln mhd sl clky sl fos no por sm Ls-tan fxln mhd fos oom and ool no por

----- **Hushpuckney 4349 -1215** -----

Ls-crm/lt tan fxln mhd/dns sl clky no por

Sh-gry/dk gry

Ls-lt gry/crm f/mxln mhd sl clky sl fos no por sm Ls-wt fxln soft clky no por

Ls-lt gry/crm fxln dns sl clky no por

Ls-lt gry fxln dns sl clky no por

Ls-lt gry/crm fxln mhd sl fos no por

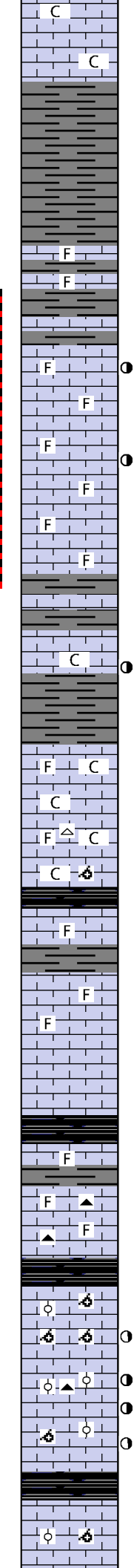
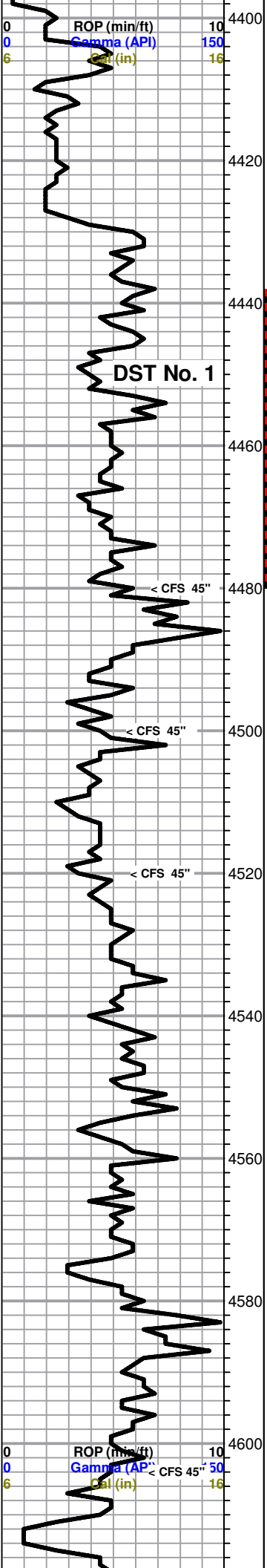
Ls-AA

----- **Base/Kansas City 4388 -1254** -----

Ls-lt gry/crm fxln dns sl fos no por

Sh-gry/dk gry

Mud Data at 4221'
 5:20 am 11-25-14
 Wt 89.2 Vis 54 WL 8.0
 pH 9 Chl 4300 Sol 6.1%
 YP 20 LCM 1#



Ls-tan f/mxln mhd clky fr inter xln por nsfo

Ls-tan/lt gry fxln dns sl clky no por

Sh-gry/dk gry

Sh-AA

Sh-AA

Ls-tan/gry f/mxln dns sl fos no por

Sh-gry/dk gry

Ls-tan/lt gry f/mxln dns sl fos no por

Sh-gry/dk gry

----- Marmaton 4446 -1312 -----

Ls-tan/lt gry mxln mhd fos fr inter fos por lt brn spt stn fr cut ssfo on brk

Ls-tan/lt gry f/mxln dns sl fos no por

Ls-tan/lt gry f/mxln mhd/dns sl fos no por sm Ls-tan (3 pcs) f/mxln mhd pr inter xln por lt brn spt stn sl cut ssfo on brk

Ls-tan/lt gry f/mxln mhd/dns sl fos no por

Ls-AA

Sh-gry/dk gry

Ls-lt gry/gry fxln dns no por

Sh-gry/dk gry

Ls-lt gry/gry fxln dns no por

Ls-crm/lt tan fxln mhd sl clky no por with 1 piece Ls-lt gry fxln mhd pr inter xln por lt brn to dk brn spt stn fr cut ssfo on brk

Sh-gry/dk gry

Ls-lt gry/tan fxln mhd/dns sl clky no por sm Ls-crm/tan frag mhd fos no por

Ls-crm/tan fxln mhd sl clky no por

Ls-lt gry/crm/tan fxln dns sl clky no por sm Cht-wt fsh opa with tan ool

Ls-AA sm Ls-tan/gry frag mhd fos sl oom no por

----- Pawnee 4525 -1391 -----

Ls-lt gry/crm/tan fxln mhd no por sm Ls-lt gry/gry frag mhd fos no por

Sh-gry/dk gry

Ls-lt gry/tan fxln dns sl fos no por

Ls-lt gry/tan fxln mhd sl fos no por

Ls-lt gry/tan fxln mhd/dns no por

Ls-lt gry/tan fxln dns no por

Sh-blk carb

----- Myrick Station 4558 -1424 -----

Ls-lt gry/tan brn fxln dns sl fos no por

Sh-gry/dk gry

Ls-gry/brn f/mxln dns sl fos no por sm Ls-tan fxln mhd fos sl oom no por and Cht-gry fsh opa

Ls-AA sm Cht-gry fsh opa

Sh-blk carb

----- Fort Scott 4578 -1444 -----

Ls-lt gry/gry f/mxln dns fos sl ool and oom no por

Ls-lt gry/gry fxln dns no por sm Ls-tan/brn fxln mhd fos oom pr/fr inter fos por brn sct stn sl cut vssfo on brk

Ls-lt gry/tan/gry fxln dns no por sm Ls-brn fxln mhd fos ool fr inter ool por brn sat stn sl cut ssfo on brk sm Cht-gry/brn fsh opa

Ls-lt gry/tan fxln mhd/dns no por sl Ls-tan/brn fxln mhd fos sl ool and oom pr inter fos por brn spt stn sl cut vssfo on brk

----- Cherokee Shale 4604 -1470 -----

Sh-blk carb

Ls-lt gry/gry fxln dns no por

Ls-lt gry/tan fxln mhd fos ool and oom gd inter ool por nsfo

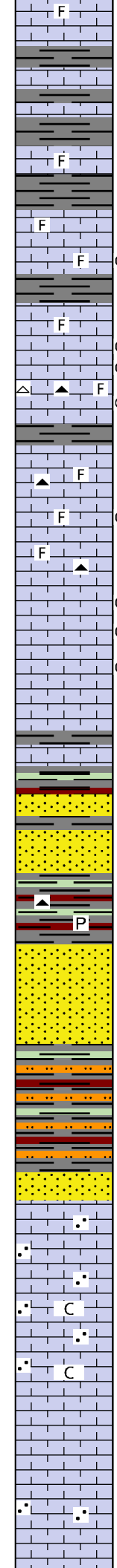
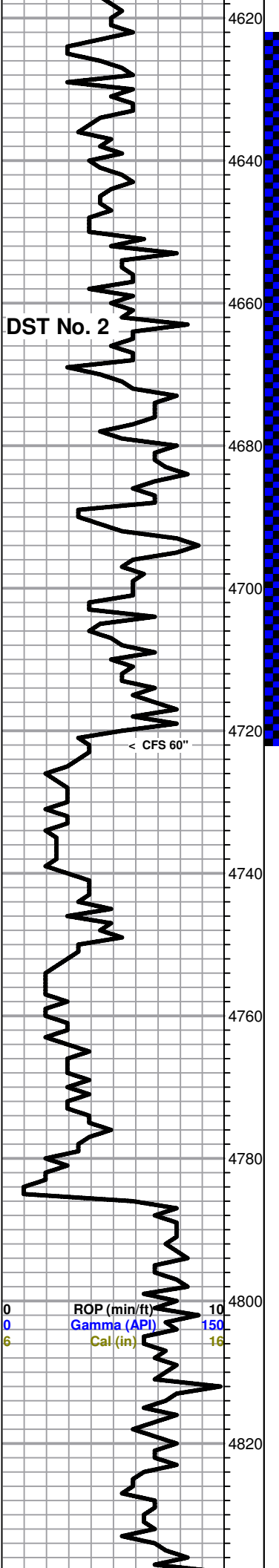
DST No. 1
4438 to 4480
15-30-45-90
1st Open: BOB in 4.5"
2nd Open: BOB in 4.5"
Recovery:
587' GIP
40' CGO (5%G, 95%O
31° gravity)
252' GMCO (10%G, 20%M
70%O)
252' GMCO (30%G, 20%M
50%O)
IHP 2234 FHP 2115
IFP 32-88 FFP 97-225
ISIP 1113 FSIP 1012
Temp 119°

Pipe strap at 4480'
Short 0.16'

Pulled 20 stand short trip at
4480', then cir for test 90"

Mud Data at 4480'
5:45 am 11-26-14
Wt 9.4 Vis 72 WL 8.0
pH 9 Chl 5600 Sol 7.4%
YP 23 LCM 2#

Mud Data at 4556'
4:45 am 11-27-14
Wt 9.3 Vis 54 WL 8.8
pH 9.5 Chl 6800 Sol 6.7%
YP 19 LCM 2#



Ls-lt gry/tan fxln dns sl fos no por

Sh-gry/dk gry
 Ls-lt gry/crm fxln dns no por
 Sh-gry/dk gry
 Ls-lt gry/crm fxln dns no por
 Sh-gry/dk gry

Ls-lt gry/tan/gry f/mxln dns sl fos no por
 Sh-gry/dk gry

----- **Johnson Zone 4650 -1516** -----

Ls-lt gry/gry/tan f/mxln mhd/dns sl fos no por

Ls-tan/gry/brn mxln dns fos no por sm Ls-brn (3 pcs) fxln mhd fr vug por
 dk brn spt stn sl cut ssfo on brk

Sh-gry/dk gry

Ls-lt gry/gry fxln to frag dns no por sm pcs highly fos sm pcs with blk fos

Ls-brn fxln mhd fr/gd vug por brn sct to sat stn fr cut ssfo on brk

Ls-AA

Ls-tan/gry/brn f/mln dns fos no por sm Cht-wt/gry/brn fsh opa and
 sm Ls-brn/tan (3 pcs) fxln mhd pr inter xln por brn spt stn sl cut vssfo

Sh-gry/dk gry

Ls-tan/gry/brn mxln dns fos no por sm Cht-gry/brn/tan fsh opa

Ls-tan/gry fxln mhd sl fos gd vug/xln por brn spt to sat stn gd cut
 fsfo on brk sl odor

Ls-tan/gry/brn f/mxln dns sl fos no por sm Cht-gry/brn fsh opa

Ls-tan/gry fxln mhd/dns sl fos no por sm Cht-AA

Ls-tan/brn fxln mhd fr vug/xln por brn spt stn gd cut fsfo on brk sl odor

Ls-AA

Ls-lt gry/gry fxln dns no por sm Ls-brn f/mxln mhd fr vug por brn spt stn
 sl cut ssfo on brk

Ls-lt gry f/mxln dns no por

Sh-gry/dk gry
 Ls-tan/gry fxln mhd no por

Sh-gry/dk gry/gry grn/mar

Ss-lt gry/grn fgrn sub ang tite cement

Sh-gry/dk gry

Ss-lt gry/grn fgrn sub ang tite cement

Sh-gry/grn/mar sm Cht-org fsh opa and Pyrite

Ss-lt gry/lt grn fgrn sub ang tite cement

Ss-AA

Sh-gry/grn/sm mar and Silt-lt gry/grn

Sh and Silt-AA

Sh and Silt-AA

Ss-lt gry/wt fgrn sub rnd to rnd fri

----- **Mississippi 4786 -1652** -----

Ls-wt/crm fxln to sl gran mhd/dns no por

Ls-AA

Ls-crm/wt fgran mhd/dns sl clky no por

Ls-AA

Ls-crm/lt gry fxln mhd/ns no por

Ls-AA

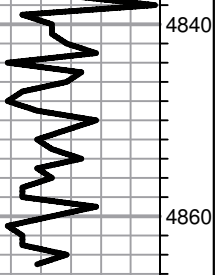
Ls-crm/lt tan fxln to sl gran mhd/dns no por

Ls-lt arv/crm fxln dns no por

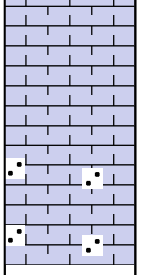
DST No. 2
 4622 to 4722
 30-30-45-60
 1st Open: Fair blow,
 building to 6"
 2nd Open: BOB in 23"
 Recovery:
 282' GIP
 93' OCGM (15%O, 30%G
 55%M)
 IHP 2299 FHP 2286
 IFP 27-40 FFP 42-55
 ISIP 600 FSIP 1161
 Temp 114°

Pulled 15 stand short trip at
 4722', then cir for test 60"

Mud Data at 4722'
 8:30 am 11-28-14
 Wt 9.3 Vis 40 WL 8.0
 pH 8.5 Chl 8000 Sol 6.6%
 YP 8 LCM 1#



4840
4860
4880
4900



Ls-lt gry/crm fxln mhd/dns no por

Ls-AA


Ls-lt gry/crm fxln to fgran mhd/dns no por

Ls-AA


----- RTD 4865 -1731 -----

Finished drilling at 4:42 am on 11-29-14. Circulated for log 60 minutes.

Finished logging at 1:40 pm on 11-29-14

 Shakespeare Nichols 2-15 dst 1-1.jpg

 Shakespeare Nichols 2-15 dst 2-1.jpg

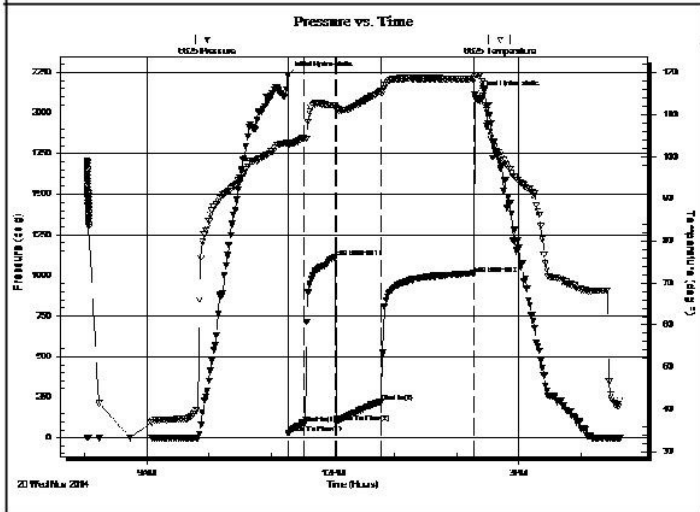
 TRILOBITE TESTING, INC.	DRILL STEM TEST REPORT	
	Shakespeare Oil Co Inc. 202 W Main St Salem IL, 62881 ATTN: Mac Armstrong	15-16s-34w Scott County Nichols 2-15 Job Ticket: 58634 DST#: 1 Test Start: 2014.11.26 @ 08:02:00

GENERAL INFORMATION:

Formation: Marmaton	Test Type: Conventional Bottom Hole (Initial)
Deviated: No Whipstock: 0.00 ft (KB)	Tester: Justin Harris
Time Tool Opened: 11:17:00	Unit No: 58
Time Test Ended: 16:38:30	Reference Elevations: 3134.00 ft (KB)
Interval: 4438.00 ft (KB) To 4480.00 ft (KB) (TVD)	3122.00 ft (CF)
Total Depth: 4480.00 ft (KB) (TVD)	KB to GR/CF: 12.00 ft
Hole Diameter: 7.88 inches	Hole Condition: Poor

Serial #: 6625	Outside	Capacity: 8000.00 psig
Press@RunDepth: 224.54 psig @ 4476.00 ft (KB)	Start Date: 2014.11.26	Last Calib.: 2014.11.26
Start Time: 08:02:01	End Date: 2014.11.26	Time On Btm: 2014.11.26 @ 11:16:30
End Time: 16:38:30	Time Off Btm: 2014.11.26 @ 14:17:30	


TEST COMMENT: 15: B.O.B in 4 1/2 mins.
 30: Weak surface blow.
 45: B.O.B in 4 1/2 mins.
 90: Weak surface blow.



PRESSURE SUMMARY			
Time (Min.)	Pressure (psig)	Temp (deg F)	Annotation
0	2233.90	103.27	Initial Hydro-static
1	31.49	102.84	Open To Flow (1)
16	88.20	104.60	Shut-In(1)
46	1112.90	112.08	End Shut-In(1)
47	97.02	111.64	Open To Flow (2)
91	224.54	115.48	Shut-In(2)
180	1012.27	118.42	End Shut-In(2)
181	2115.02	118.97	Final Hydro-static

Recovery		
Length (ft)	Description	Volume (bbl)
252.00	gmco 30g 20m 50o	3.53
252.00	gmco 10g 20m 70o	3.53
40.00	clean oil 5g 95o	0.56
0.00	GIP 587	0.00

Gas Rates			
	Choke (inches)	Pressure (psig)	Gas Rate (Mcf/d)

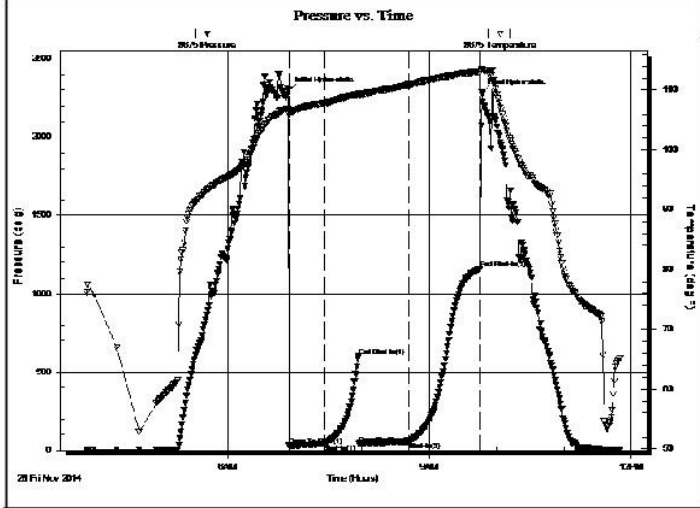
 TRILOBITE TESTING, INC.	DRILL STEM TEST REPORT	
	Shakespeare Oil Co Inc. 202 W Main St Salem IL, 62881 ATTN: Mac Armstrong	15-16s-34w Scott County Nichols 2-15 Job Ticket: 58505 DST#: 2 Test Start: 2014.11.28 @ 03:54:00

GENERAL INFORMATION:

Formation: Johnson Zone	Test Type: Conventional Bottom Hole (Reset)
Deviated: No Whipstock: 0.00 ft (KB)	Tester: Jace McKinney
Time Tool Opened: 06:54:45	Unit No: 75
Time Test Ended: 11:50:45	Reference Elevations: 3134.00 ft (KB)
Interval: 4622.00 ft (KB) To 4722.00 ft (KB) (TVD)	3122.00 ft (CF)
Total Depth: 4722.00 ft (KB) (TVD)	KB to GR/CF: 12.00 ft
Hole Diameter: 7.88 inches	Hole Condition: Poor

Serial #: 8675	Inside	Capacity: 8000.00 psig
Press@RunDepth: 55.31 psig @ 4639.00 ft (KB)	Start Date: 2014.11.28	Last Calib.: 2014.11.28
Start Time: 03:54:15	End Date: 2014.11.28	Time On Btm: 2014.11.28 @ 06:54:30
	End Time: 11:50:45	Time Off Btm: 2014.11.28 @ 09:47:00

TEST COMMENT: Built to 6" blow
 Bled off for 3 min, No return blow
 B.O.B. in 23 min.
 Bled off for 5 min, No return blow



PRESSURE SUMMARY			
Time (Min.)	Pressure (psig)	Temp (deg F)	Annotation
0	2298.91	106.91	Initial Hydro-static
1	26.93	105.90	Open To Flow (1)
32	40.38	107.80	Shut-In(1)
63	599.90	109.37	End Shut-In(1)
63	42.05	109.20	Open To Flow (2)
107	55.31	110.89	Shut-In(2)
172	1160.97	113.09	End Shut-In(2)
173	2286.46	113.52	Final Hydro-static

Recovery		
Length (ft)	Description	Volume (bbl)
0.00	282 Feet Gas In Pipe	0.00
93.00	ocgm 15%O 30%G 55%M	1.30

* Recovery from multiple tests

Gas Rates			
	Choke (inches)	Pressure (psig)	Gas Rate (Mcf/d)