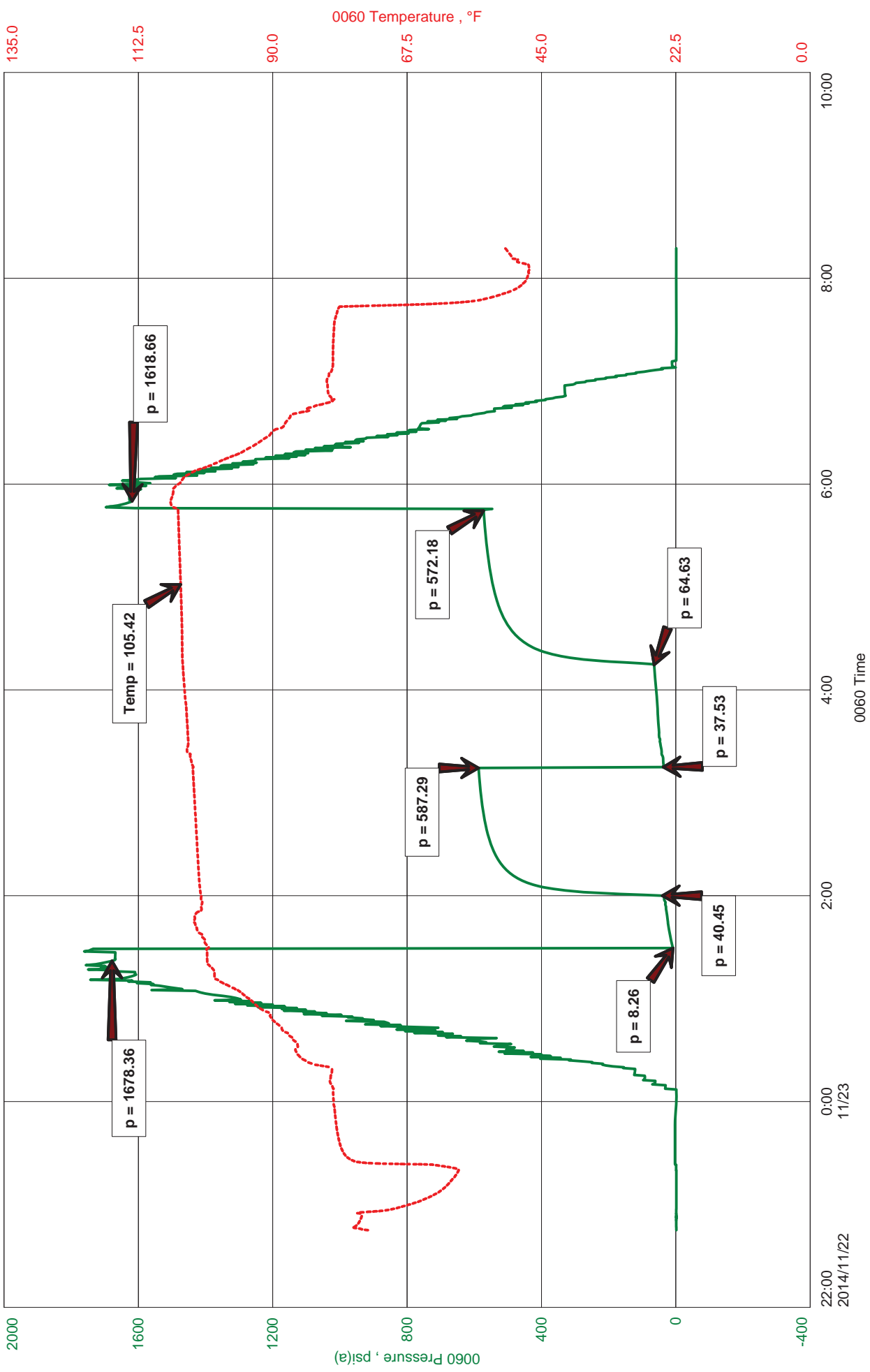


TRANS PACIFIC OIL CORPORATION
DST #1- LKC-35=50' 3480 - 3530
Start Test Date: 2014/11/22
Final Test Date: 2014/11/23

SURLEY UNIT "A" 1-28
Formation: DST #1- LKC-35=50' 3480 - 3530
Pool: WILDCAT
Job Number: JB03

SURLEY UNIT "A" 1-28





DIAMOND TESTING
 P.O. Box 157
 HOISINGTON, KANSAS 67544
 (800) 542-7313

TIME ON: 22:45
 TIME OFF: 08:18

DRILL-STEM TEST TICKET
 FILE: SURLEY UNIT "A" 1-28 DST 1

Company TRANS PACIFIC OIL CORPORATION Lease & Well No. SURLEY UNIT "A" 1-28
 Contractor MALLARD, J.V.INC Charge to TRANS PACIFIC OIL CORPORATION
 Elevation 2181 KB Formation LKC- 35' - 50' Effective Pay _____ Ft. Ticket No. JB03
 Date 11-22-14 Sec. 28 Twp. 14 S Range 19 W County ELLIS State KANSAS
 Test Approved By BRAD RINE Diamond Representative JEFF BROWN

Formation Test No. 1 Interval Tested from 3480 ft. to 3530 ft. Total Depth 3530 ft.
 Packer Depth 3475 ft. Size 6 3/4 in. Packer depth _____ ft. Size 6 3/4 in.
 Packer Depth 3480 ft. Size 6 3/4 in. Packer depth _____ ft. Size 6 3/4 in.

Depth of Selective Zone Set _____
 Top Recorder Depth (Inside) 3466 ft. Recorder Number 0060 Cap. 5,000 P.S.I.
 Bottom Recorder Depth (Outside) 3517 ft. Recorder Number 5517 Cap. 5000 P.S.I.
 Below Straddle Recorder Depth _____ ft. Recorder Number _____ Cap. _____ P.S.I.

Mud Type CHEMICAL Viscosity 51 Drill Collar Length 249 ft. I.D. 2 1/4 in.
 Weight 8.9 Water Loss 6.8 cc. Weight Pipe Length 0 ft. I.D. 2 7/8 in.
 Chlorides 1800 P.P.M. Drill Pipe Length 3203 ft. I.D. 3 1/2 in.
 Jars: Make STERLING Serial Number N/A Test Tool Length 28 ft. Tool Size 3 1/2-IF in.
 Did Well Flow? NO Reversed Out NO Anchor Length 50 ft. Size 4 1/2-FH in.
 Main Hole Size 7 7/8 Tool Joint Size 4 1/2 XH in. Surface Choke Size 1 in. Bottom Choke Size 5/8 in.

Blow: 1st Open: WEAK BLOW BUILT TO 2 IN (NObb)
 2nd Open: WEAK BLOW BUILT TO 1-1/2 IN (NObb)

Recovered <u>125</u> ft. of <u>100% MUD</u>	
Recovered _____ ft. of _____	
Recovered _____ ft. of _____	
Recovered _____ ft. of _____	
Recovered _____ ft. of _____	Price Job
Recovered _____ ft. of _____	Other Charges
Remarks: <u>TOTAL FLUID; 125' MUD</u>	Insurance
TOOL SAMPLE: <u>100% MUD</u>	Total

Time Set Packer(s) 1:30 A.M. A.M. P.M. Time Started Off Bottom 5:45 A.M. A.M. P.M. Maximum Temperature 105
 Initial Hydrostatic Pressure..... (A) 1678 P.S.I.
 Initial Flow Period..... Minutes 30 (B) 8 P.S.I. to (C) 40 P.S.I.
 Initial Closed In Period..... Minutes 75 (D) 587 P.S.I.
 Final Flow Period..... Minutes 60 (E) 38 P.S.I. to (F) 65 P.S.I.
 Final Closed In Period..... Minutes 90 (G) 572 P.S.I.
 Final Hydrostatic Pressure..... (H) 1619 P.S.I.

Diamond Testing shall not be liable for damages of any kind to the property or personnel of the one for whom a test is made or for any loss suffered or sustained, directly or indirectly, through the use of its equipment, or its statement or opinion concerning the result of any test. Tools lost or damaged in the hole shall be paid for at cost by the party for whom the test is made.



Hoisington, Kansas

JEFF BROWN
620-617-6373
brown.dtlc@gmail.com

General Information

Company Name TRANS PACIFIC OIL CORPORATION

Test Information

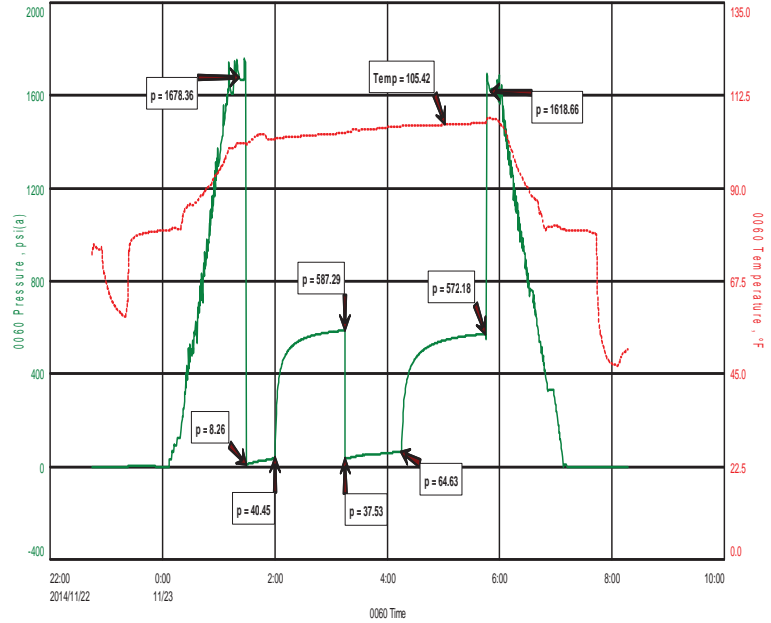
Contact
Well Name
Unique Well ID
Surface Location
Field
Well Operator
Test Type
Formation
Well Fluid Type
Test Purpose (AEUB)
Start Test Date
Start Test Time
Final Test Date
Final Test Time
Job Number
Representative
Prepared By
Report Date

BETH A ISERN
SURLEY UNIT "A" 1-28
DST #1- LKC-35'=50' 3480 - 3530
SEC-28-14S-19W - ELLIS CNTY,KS
WILDCAT
TRANS PACIFIC OIL CORPORATION
Drill Stem Test
DST #1- LKC-35'=50' 3480 - 3530
01 Oil
Initial Test
2014/11/22
22:45:00
2014/11/23
08:18:00
JB03
JEFF BROWN
JEFF BROWN
2014/11/22

TRANS PACIFIC OIL CORPORATION
 DST #1- LKC-35'=50' 3480 - 3530
 Start Test Date: 2014/11/22
 Final Test Date: 2014/11/23

SURLEY UNIT "A" 1-28
 Formation: DST #1- LKC-35'=50' 3480 - 3530
 Pool: WILDCAT
 Job Number: JB03

SURLEY UNIT "A" 1-28



FLUID RECOVERY

08FLUID RECOVERY: 125' OF MUD

TOOL SAMPLE; 100% MUD