



**TRILOBITE
TESTING, INC**

DRILL STEM TEST REPORT

Vincent Oil Corporation
155 N Market Ste 700
Wichita, KS 67202
ATTN: Ken LeBlanc

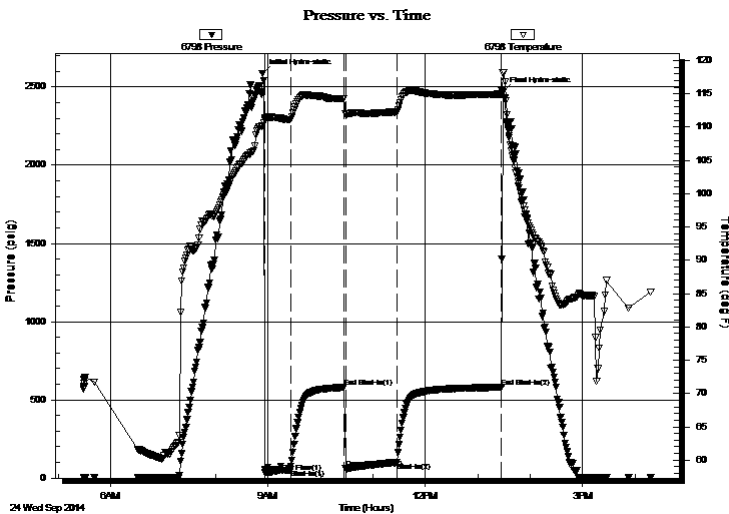
27-28S-23W Ford
2-27 Sandy Land
Job Ticket: 57765 **DST#: 1**
Test Start: 2014.09.24 @ 05:29:00

GENERAL INFORMATION:

Formation: **Pawnee**
Deviated: No Whipstock: ft (KB)
Time Tool Opened: 08:56:30
Time Test Ended: 16:32:38
Test Type: Conventional Bottom Hole (Initial)
Tester: Leal Cason
Unit No: 74
Interval: **4990.00 ft (KB) To 5020.00 ft (KB) (TVD)**
Reference Elevations: 2517.00 ft (KB)
Total Depth: 5020.00 ft (KB) (TVD)
Hole Diameter: 7.88 inches Hole Condition: Good
KB to GR/CF: 12.00 ft

Serial #: 6798 Inside
Press@RunDepth: 101.58 psig @ 4991.00 ft (KB) Capacity: 8000.00 psig
Start Date: 2014.09.24 End Date: 2014.09.24 Last Calib.: 2014.09.24
Start Time: 05:29:01 End Time: 16:32:38 Time On Btm: 2014.09.24 @ 08:53:30
Time Off Btm: 2014.09.24 @ 13:28:30

TEST COMMENT: IF: Strong Blow , BOB in 90 seconds
IS: Weak Surface Blow Back
FF: Strong Blow , BOB immediate, GTS in 15 minutes, Gauged & Caught Sample
FS: No Blow Back



PRESSURE SUMMARY

Time (Min.)	Pressure (psig)	Temp (deg F)	Annotation
0	2586.77	110.26	Initial Hydro-static
3	35.27	111.34	Open To Flow (1)
32	54.74	111.15	Shut-In(1)
94	580.11	114.24	End Shut-In(1)
95	62.45	111.94	Open To Flow (2)
154	101.58	112.30	Shut-In(2)
274	580.44	114.95	End Shut-In(2)
275	2466.66	118.09	Final Hydro-static

Recovery

Length (ft)	Description	Volume (bbl)
0.00	4761 GIP	0.00
62.00	GOMCW 30%G 6%O 12%M 52%W	0.87
154.00	GOCM 10%G 10%O 80%M	2.16

Gas Rates

	Choke (inches)	Pressure (psig)	Gas Rate (Mcf/d)
First Gas Rate	0.25	5.00	30.78
Last Gas Rate	0.25	8.00	35.54
Max. Gas Rate	0.25	8.00	35.54



**TRILOBITE
TESTING, INC**

DRILL STEM TEST REPORT

FLUID SUMMARY

Vincent Oil Corporation

27-28S-23W Ford

155 N Market Ste 700
Wichita, KS 67202

2-27 Sandy Land

Job Ticket: 57765

DST#: 1

ATTN: Ken LeBlanc

Test Start: 2014.09.24 @ 05:29:00

Mud and Cushion Information

Mud Type: Gel Chem

Cushion Type:

Oil API:

deg API

Mud Weight: 9.00 lb/gal

Cushion Length:

ft

Water Salinity:

75000 ppm

Viscosity: 49.00 sec/qt

Cushion Volume:

bbbl

Water Loss: 10.79 in³

Gas Cushion Type:

Resistivity: ohm.m

Gas Cushion Pressure:

psig

Salinity: 6900.00 ppm

Filter Cake: 0.02 inches

Recovery Information

Recovery Table

Length ft	Description	Volume bbl
0.00	4761 GIP	0.000
62.00	GOMCW 30%G 6%O 12%M 52%W	0.870
154.00	GOCM 10%G 10%O 80%M	2.160

Total Length: 216.00 ft Total Volume: 3.030 bbl

Num Fluid Samples: 0

Num Gas Bombs: 0

Serial #:

Laboratory Name:

Laboratory Location:

Recovery Comments: RW w as .085 @ 85 degrees



**TRILOBITE
TESTING, INC.**

DRILL STEM TEST REPORT

GAS RATES

Vincent Oil Corporation

27-28S-23W Ford

155 N Market Ste 700
Wichita, KS 67202

2-27 Sandy Land

Job Ticket: 57765

DST#: 1

ATTN: Ken LeBlanc

Test Start: 2014.09.24 @ 05:29:00

Gas Rates Information

Temperature: 59 (deg F)
Relative Density: 0.65
Z Factor: 0.8

Gas Rates Table

Flow Period	Elapsed Time	Choke (inches)	Pressure (psig)	Gas Rate (Mcf/d)
2	20	0.25	5.00	30.78
2	30	0.25	5.00	30.78
2	40	0.25	8.00	35.54
2	50	0.25	8.00	35.54
2	60	0.25	8.00	35.54

Serial #: 6798

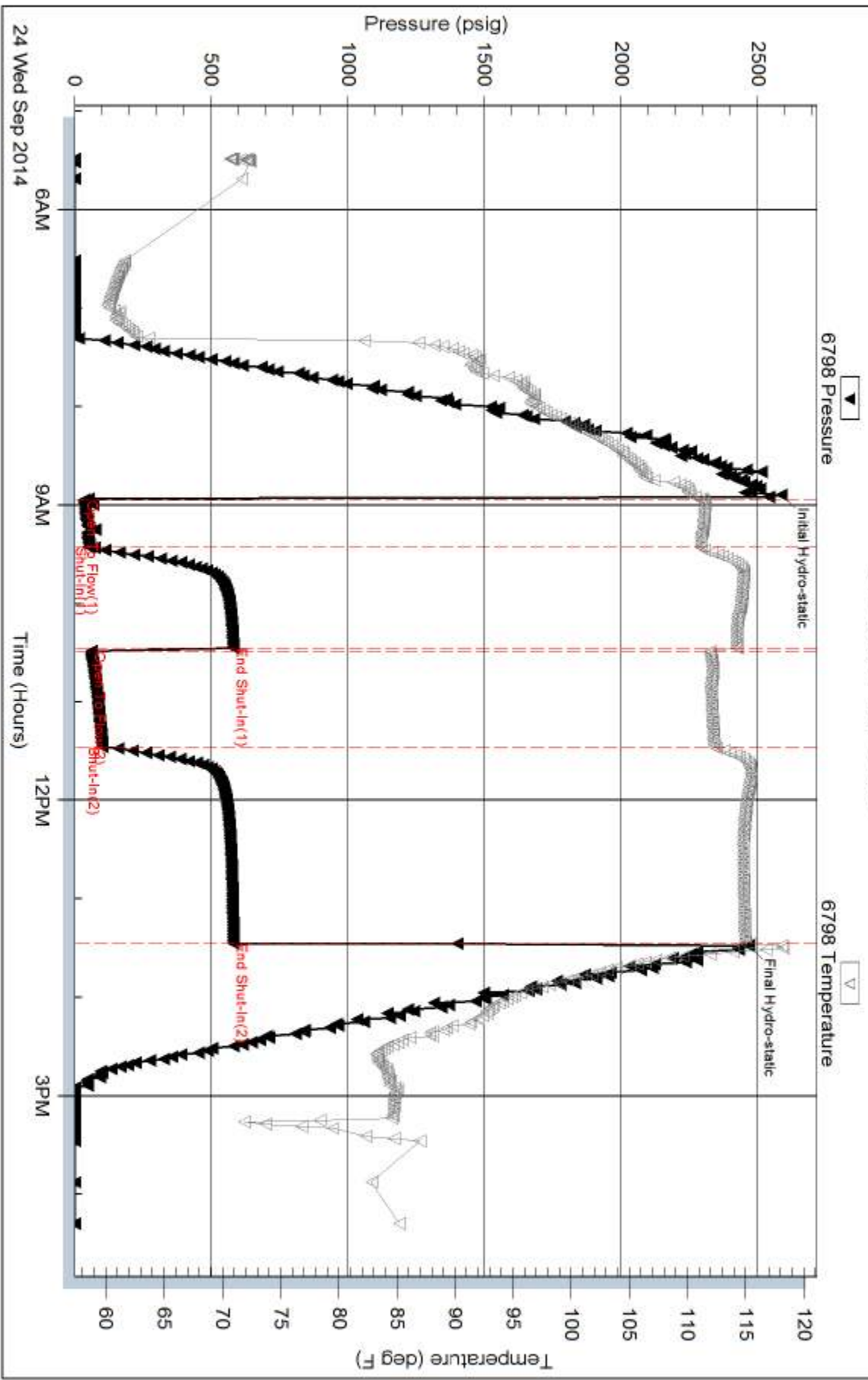
Inside

Vincent Oil Corporation

2-27 Sandy Land

DST Test Number: 1

Pressure vs. Time



Trilobite Testing, Inc

Ref. No: 57765

Printed: 2014.09.24 @ 15:47:05