



**TRILOBITE
TESTING, INC**

DRILL STEM TEST REPORT

Vincent Oil Corporation

27-28S-23W Ford

155 N Market Ste 700
Wichita, KS 67202

2-27 Sandy Land

Job Ticket: 57767

DST#: 3

ATTN: Ken LeBlanc

Test Start: 2014.09.26 @ 04:52:07

GENERAL INFORMATION:

Formation: **Mississippi**

Deviated: No Whipstock: ft (KB)

Time Tool Opened: 07:43:07

Time Test Ended: 13:46:22

Test Type: Conventional Bottom Hole (Reset)

Tester: Leal Cason

Unit No: 74

Interval: 5180.00 ft (KB) To 5195.00 ft (KB) (TVD)

Reference Elevations: 2517.00 ft (KB)

Total Depth: 5195.00 ft (KB) (TVD)

2505.00 ft (CF)

Hole Diameter: 7.88 inches Hole Condition: Good

KB to GR/CF: 12.00 ft

Serial #: 6798

Inside

Press@RunDepth: 279.83 psig @ 5181.00 ft (KB)

Capacity: 8000.00 psig

Start Date: 2014.09.26

End Date:

2014.09.26

Last Calib.:

2014.09.26

Start Time: 04:52:08

End Time:

13:46:22

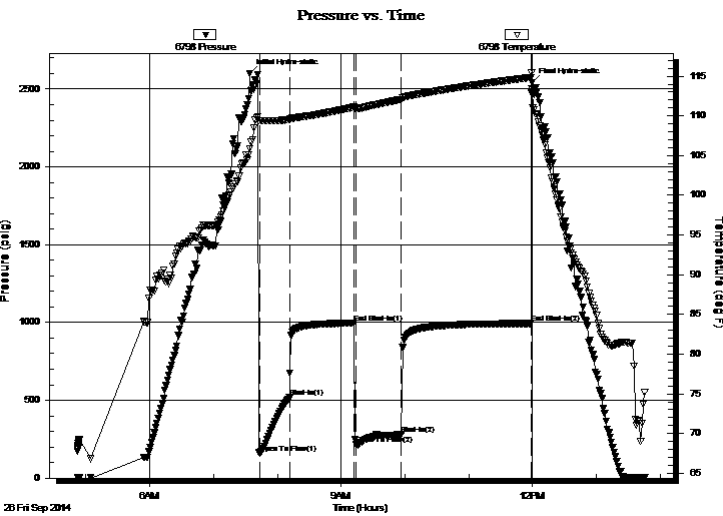
Time On Btm:

2014.09.26 @ 07:34:07

Time Off Btm:

2014.09.26 @ 11:59:22

TEST COMMENT: IF: Strong Blow , BOB in 10 seconds, GTS in 7 minutes, Gauged & Caught Sample
IS: 1/4 inch Blow Back
FF: Strong Blow , BOB & GTS immediately, Gauged Gas
FS: Weak Surface Blow Back



PRESSURE SUMMARY

Time (Min.)	Pressure (psig)	Temp (deg F)	Annotation
0	2601.38	105.84	Initial Hydro-static
9	159.91	109.40	Open To Flow (1)
38	517.03	109.53	Shut-In(1)
98	996.47	111.09	End Shut-In(1)
100	216.47	110.88	Open To Flow (2)
143	279.83	112.07	Shut-In(2)
265	994.34	114.84	End Shut-In(2)
266	2541.53	113.35	Final Hydro-static

Recovery

Length (ft)	Description	Volume (bbl)
0.00	GTS	0.00
10.00	Mud	0.14

Gas Rates

	Choke (inches)	Pressure (psig)	Gas Rate (Mcf/d)
First Gas Rate	0.25	175.00	300.46
Last Gas Rate	0.50	155.00	1142.72
Max. Gas Rate	0.25	428.00	701.83

* Recovery from multiple tests



**TRILOBITE
TESTING, INC**

DRILL STEM TEST REPORT

FLUID SUMMARY

Vincent Oil Corporation

27-28S-23W Ford

155 N Market Ste 700
Wichita, KS 67202

2-27 Sandy Land

Job Ticket: 57767

DST#: 3

ATTN: Ken LeBlanc

Test Start: 2014.09.26 @ 04:52:07

Mud and Cushion Information

Mud Type: Gel Chem

Cushion Type:

Oil API:

deg API

Mud Weight: 9.00 lb/gal

Cushion Length:

ft

Water Salinity:

ppm

Viscosity: 49.00 sec/qt

Cushion Volume:

bbbl

Water Loss: 10.78 in³

Gas Cushion Type:

Resistivity: ohm.m

Gas Cushion Pressure:

psig

Salinity: 6900.00 ppm

Filter Cake: 0.02 inches

Recovery Information

Recovery Table

Length ft	Description	Volume bbl
0.00	GTS	0.000
10.00	Mud	0.140

Total Length: 10.00 ft Total Volume: 0.140 bbl

Num Fluid Samples: 0

Num Gas Bombs: 0

Serial #:

Laboratory Name:

Laboratory Location:

Recovery Comments:



**TRILOBITE
TESTING, INC.**

DRILL STEM TEST REPORT

GAS RATES

Vincent Oil Corporation

27-28S-23W Ford

155 N Market Ste 700
Wichita, KS 67202

2-27 Sandy Land

Job Ticket: 57767

DST#: 3

ATTN: Ken LeBlanc

Test Start: 2014.09.26 @ 04:52:07

Gas Rates Information

Temperature: 59 (deg F)
Relative Density: 0.65
Z Factor: 0.8

Gas Rates Table

Flow Period	Elapsed Time	Choke (inches)	Pressure (psig)	Gas Rate (Mcf/d)
1	10	0.25	175.00	300.46
1	10	0.25	175.00	300.46
1	20	0.25	315.00	522.56
1	30	0.25	428.00	701.83
2	10	0.50	110.00	839.16
2	20	0.50	150.00	1108.99
2	30	0.50	155.00	1142.72
2	40	0.50	155.00	1142.72

Serial #: 6798

Inside

Vincent Oil Corporation

2-27 Sandy Land

DST Test Number: 3

Pressure vs. Time

